

Download our reports

The report, *Hospital Quarterly: Performance of NSW public hospitals, January to March 2011* and related reports are available at www.bhi.nsw.gov.au

The suite of products includes:

- Three core modules on Admitted Patients, Elective Surgery and Emergency Departments
- *Performance Profiles: Elective surgery* (performance and activity reports for more than 80 hospitals and NSW as a whole)
- *Performance Profiles: Emergency department care* (performance and activity reports for EDs in more than 60 hospitals and NSW as a whole)
- *Data Quality Assessments*
- *Technical Supplements*



About the Bureau

The Bureau of Health Information provides the community, healthcare professionals and the NSW Parliament with timely, accurate and comparable information on the performance of the NSW public health system in ways that enhance the system's accountability and inform efforts to increase its beneficial impact on the health and wellbeing of the people of NSW.

The Bureau is an independent, board-governed statutory health corporation. The conclusions in this report are those of the Bureau and no official endorsement by the NSW Minister for Health, the NSW Department of Health or any other NSW statutory health corporation is intended or should be inferred.

To contact the Bureau

Telephone: +61 2 8644 2100

Fax: +61 2 8644 2119

Email: enquiries@bhi.nsw.gov.au

Postal address:

PO Box 1770

Chatswood

New South Wales 2057

Australia

Web: www.bhi.nsw.gov.au

Copyright Bureau of Health Information 2011

State Health Publication Number: (BHI) 110115
ISSN 1838-3238

Suggested citation: Bureau of Health Information.
Hospital Quarterly: Performance of NSW public hospitals, January to March 2011. Admitted Patients. 2(1). Sydney (NSW); 2011.

Published June 2011

Please note that there is the potential for minor revisions of data in this report. Please check the online version at www.bhi.nsw.gov.au for any amendments.

Admitted Patients

Hospital Quarterly:

Performance of
NSW public hospitals

January to March 2011

People are admitted to hospital for a variety of reasons, such as surgery or childbirth.

When a person is admitted to hospital, they begin what is termed an 'episode of care'. This covers a single type of care such as acute care, rehabilitation or palliative care. Sometimes, a change in the medical needs of a person can require that they start a second or third episode during the same period of stay in hospital.

Healthcare professionals monitor episodes to better understand local medical needs and to allow planning for hospital beds, waiting lists and staffing.

The number of patients admitted during January to March 2011 was 3% higher than the same quarter in 2010. There has been a decrease since the previous quarter, representing a consistent

pattern of lower admissions in the first three months of the year. The proportion of planned admissions remained largely unchanged over the past nine quarters, at 41%.

Patients admitted for acute care or maternity and birth comprised 97% of all admitted episodes. Most of these episodes were overnight admissions (56%) and this percentage has not changed over the past nine quarters. Patients stayed a total of 1,294,785 bed days during the quarter and, on average, these patients stayed 3.4 days in hospital. There were 17,886 babies born, up 3% from the same quarter one year ago.

This is one of three *Hospital Quarterly* modules. For the Emergency Departments and Elective Surgery modules visit www.bhi.nsw.gov.au

Find out how **your local hospital**

PERFORMS

Results for more than
80 NSW hospitals
available at

www.bhi.nsw.gov.au

From January to March 2011...	Same period last year...	The difference...
There were 395,903 admitted patient episodes	382,937 episodes	12,966 (+3%)
41% of all episodes were planned admissions	41%	unchanged
17,886 babies were born	17,388 babies	498 (+3%)
Acute episodes comprised 97% of all admitted patient episodes	97%	unchanged
56% of all acute episodes were overnight admissions	56%	unchanged
Acute patients stayed a total of 1,294,785 bed days in hospital	1,278,739 bed days	16,046 bed days (+1%)
Acute admitted patients stayed an average length of 3.4 days	3.4 days	unchanged

Number of admitted patient episodes

In the January to March 2011 quarter, there were 395,903 admitted patient episodes of care in NSW public hospitals, down from 411,400 in the past quarter. Each year there is a seasonal peak in the number of admitted patient episodes during the July to September quarter. The lowest number of admitted patient episodes occurs during the January to March quarter. These seasonal patterns are illustrated in [Figure 1](#).

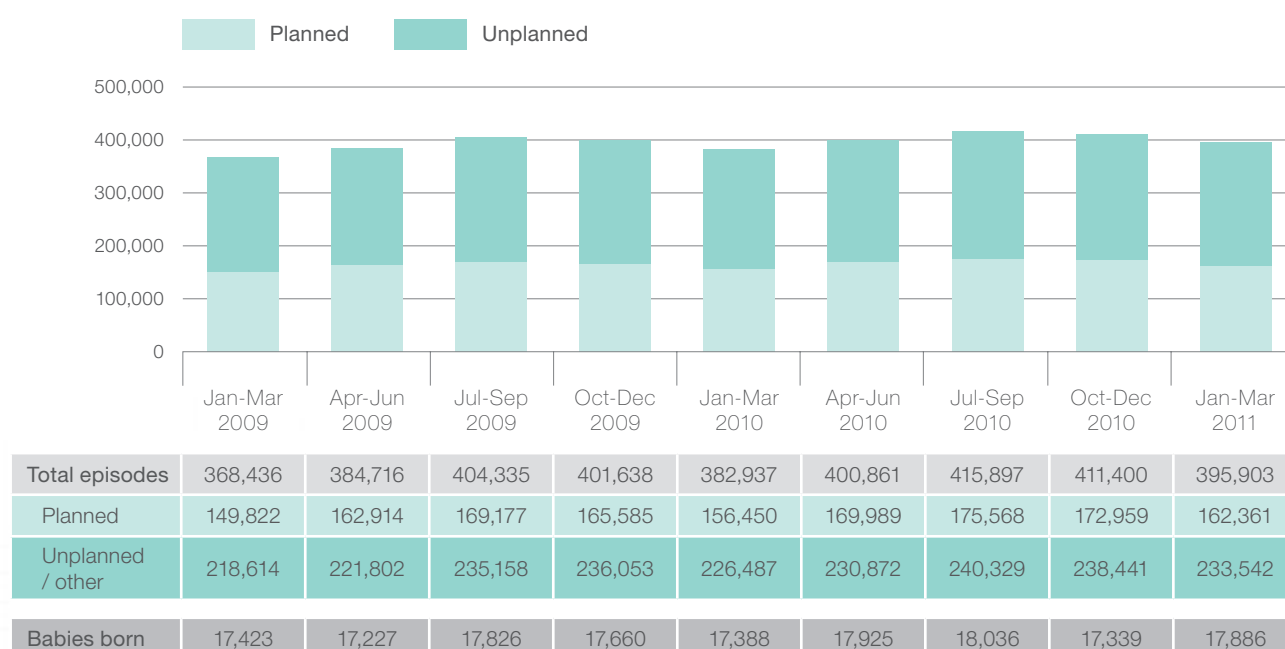
The number of admitted patient episodes in NSW public hospitals has increased over time, up from 382,937 episodes in the same quarter one year ago (3%) and from 368,436 episodes two years ago (7%).

Admitted patient episodes can be either 'planned' (arranged in advance so the hospital can organise what care is needed) or 'unplanned / other' (which include emergency admissions or unplanned surgical patients).

During January to March 2011, there were 162,361 planned admitted patient episodes and 233,542 were unplanned ([Figure 1](#)). Planned episodes accounted for 41% of all admitted patient episodes.

An admission for childbirth is considered 'unplanned' and approximately one in every 13 unplanned episodes was for childbirth. During the quarter, there were 17,886 babies born in NSW public hospitals, up from 17,388 the same time one year ago.

Figure 1: Planned and unplanned admitted patient episodes in NSW public hospitals, January 2009 to March 2011



Note: Only babies born in NSW public hospitals and multi-purpose services are included in this count.

Note: Numbers might differ slightly from those reported in previous *Hospital Quarterly* reports and in the NSW Department of Health's *Quarterly Hospital Performance Report* due to differences in when data were extracted.

Source: Admitted Patient Data Collection. Health Information Exchange, NSW Health. Data extracted on 18 April 2011.

Number of acute patients

Admitted patient episodes may be for acute care or subacute care (such as rehabilitation or palliative care). This section focuses on acute care, which is typically a short-term admission for immediate care. For this report, maternal and newborn admissions are also included under the category of acute episodes. Examples of acute care include hip replacement surgery and medical care following a heart attack. Acute episode activity is presented in [Figure 2](#).

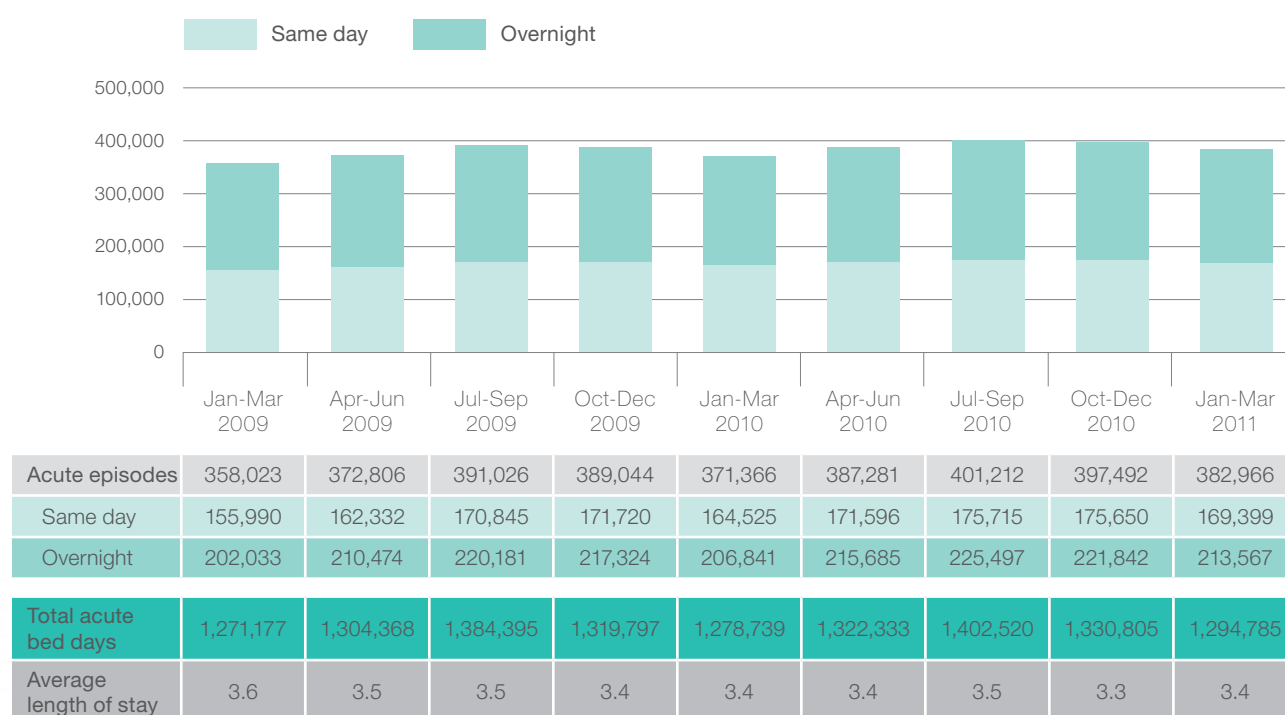
In the January to March 2011 quarter, there were 382,966 acute admitted patient episodes, down from 397,492 last quarter. The number

of these episodes in NSW public hospitals has been increasing, up from 371,366 episodes in the same quarter one year ago (3%) and from 358,023 episodes two years ago (7%).

Acute admitted patient episodes can be either **same day** (admitted for a single day or part of a day to have a test, to receive surgery or another procedure) or **overnight** (admitted for one or more nights in hospital).

During January to March, there were 169,399 same day episodes (44% of acute admitted episodes) and 213,567 overnight episodes (representing 56%) as shown in [Figure 2](#).

Figure 2: Same day and overnight acute admitted patient episodes in NSW public hospitals, January 2009 to March 2011



Note: Numbers might differ slightly from those reported in previous *Hospital Quarterly* reports and in the NSW Department of Health's *Quarterly Hospital Performance Report* due to differences in when data were extracted.

Source: Admitted Patient Data Collection. Health Information Exchange, NSW Health. Data extracted on 18 April 2011.

Hospital bed use for acute patients

Patients admitted for acute episodes stayed a total of 1,294,785 days in hospital beds during January to March 2011, down from 1,330,805 in the previous quarter.

The number of occupied bed days in NSW public hospitals has been increasing, up from a total of 1,278,739 bed days in the same quarter one year ago (1%) and from 1,271,177 bed days two years ago (2%).

The average length of stay in hospital among acute patients (including same day patients) has remained largely unchanged over the past two years at 3.4 days (Figure 2).

Table 1 presents the admitted patient episode activity for public hospitals in NSW. Data are presented by local health network for all principal referral, paediatric specialist, ungrouped acute – tertiary referral, major metropolitan, major non-metropolitan and district groups 1 and 2 hospitals. Information from smaller hospitals is presented for each local health network under the 'other' category.

Table 1: NSW admitted patient activity by hospital and local health network, January to March 2011

	All episodes			Acute episodes			
	Total episodes	Planned	Unplanned / other	Same day	Overnight	Total acute bed days	Average length of stay (days)
New South Wales							
Total New South Wales	395,903	162,361	233,542	169,399	213,567	1,294,785	3.4
Central Coast Local Health Network (CCLHN)							
Gosford Hospital	11,994	4,827	7,167	4,859	6,972	41,742	3.5
Wyong Hospital	6,405	2,852	3,553	3,010	3,164	21,935	3.6
Other CCLHN [†]	196	16	180	*	*	87	21.8
Total CCLHN	18,595	7,695	10,900	7,869	10,140	63,764	3.5
Far West Local Health Network (FWLHN)							
Broken Hill Base Hospital	1,797	896	901	957	815	5,302	3.0
Other FWLHN	121	*	*	31	80	436	3.9
Total FWLHN	1,918	901	1,017	988	895	5,738	3.0
Hunter New England Local Health Network (HNELHN)							
Armidale and New England Hospital	2,100	999	1,101	970	1,095	5,644	2.7
Belmont Hospital	1,614	714	900	401	1,209	6,105	3.8
Calvary Mater Newcastle	3,645	866	2,779	1,138	2,398	13,098	3.7
Cessnock District Hospital	868	317	551	292	549	2,565	3.3
Gunnedah District Hospital	561	200	361	188	359	1,532	2.8

All episodes

Acute episodes

	Total episodes	Planned	Unplanned / other	Same day	Overnight	Total acute bed days	Average length of stay (days)
Inverell District Hospital	1,027	309	718	426	578	2,266	2.3
John Hunter Hospital	18,286	9,280	9,006	8,900	9,141	57,824	3.2
Kurri Kurri District Hospital	522	378	144	324	184	1,640	3.2
Maitland Hospital	3,710	728	2,982	582	3,045	14,186	3.9
Manning Base Hospital	4,264	2,079	2,185	2,080	2,107	12,308	2.9
Moree District Hospital	918	501	417	441	473	2,063	2.3
Muswellbrook District Hospital	907	442	465	466	435	2,033	2.3
Narrabri District Hospital	506	93	413	160	332	1,213	2.5
Singleton District Hospital	1,166	596	570	627	524	2,430	2.1
Tamworth Base Hospital	5,246	2,545	2,701	2,374	2,770	16,304	3.2
Other HNELHN	3,213	636	2,577	635	2,428	27,904	9.1
Total HNELHN	48,553	20,683	27,870	20,004	27,627	169,115	3.6

Illawarra Shoalhaven Local Health Network (ISLHN)

Bulli District Hospital	514	109	405	238	48	303	1.1
Milton and Ulladulla Hospital	709	49	660	216	493	2,568	3.6
Shellharbour Hospital	4,369	1,635	2,734	2,443	1,846	13,637	3.2
Shoalhaven and District Memorial Hospital	5,681	2,298	3,383	3,036	2,582	13,759	2.4
Wollongong Hospital	12,174	3,789	8,385	5,324	6,827	44,332	3.6
Other ISLHN*	530	34	496	*	*	154	12.8
Total ISLHN	23,977	7,914	16,063	11,258	11,807	74,753	3.2

Justice Health (including admission data for the Forensic Mental Health Network)

Total Justice Health	540	357	183	32	507	12,950	24.0
-----------------------------	------------	------------	------------	-----------	------------	---------------	-------------

Mid North Coast Local Health Network (MNCLHN)

Coffs Harbour Base Hospital	6,856	3,377	3,479	3,333	3,436	20,054	3.0
Kempsey Hospital	2,632	762	1,870	1,554	1,014	5,773	2.2
Macksville District Hospital	662	274	388	253	388	2,794	4.4
Port Macquarie Base Hospital	4,720	2,005	2,715	1,859	2,786	14,845	3.2
Other MNCLHN	1,004	445	559	519	399	3,556	3.9
Total MNCLHN	15,874	6,863	9,011	7,518	8,023	47,022	3.0

Murrumbidgee Local Health Network (MLHN)

Deniliquin Health Service	657	144	513	247	350	1,546	2.6
Griffith Base Hospital	2,167	955	1,212	1,116	995	4,607	2.2
Tumut Health Service	546	62	484	199	337	1,240	2.3
Wagga Wagga Base Hospital	6,352	2,609	3,743	3,029	3,237	16,399	2.6
Young Health Service	645	168	477	323	315	1,252	2.0
Other MLHN	3,941	505	3,436	1,261	2,258	10,060	2.9
Total MLHN	14,308	4,443	9,865	6,175	7,492	35,104	2.6

Nepean Blue Mountains Local Health Network (NBMLHN)

Blue Mountains District Anzac Memorial Hospital	918	223	695	132	686	4,094	5.0
Lithgow Health Service	1,187	358	829	663	517	2,984	2.5
Nepean Hospital	13,162	4,340	8,822	4,896	8,082	41,545	3.2
Other NBMLHN	859	826	33	168	577	2,814	3.8
Total NBMLHN	16,126	5,747	10,379	5,859	9,862	51,437	3.3

All episodes

Acute episodes

	Total episodes	Planned	Unplanned / other	Same day	Overnight	Total acute bed days	Average length of stay (days)
--	----------------	---------	-------------------	----------	-----------	----------------------	-------------------------------

Northern NSW Local Health Network (NNSWLHN)

Ballina District Hospital	2,151	1,431	720	1,722	363	3,989	1.9
Casino and District Memorial Hospital	809	330	479	401	386	1,957	2.5
Grafton Base Hospital	3,217	1,761	1,456	1,856	1,275	7,017	2.2
Lismore Base Hospital	6,366	2,809	3,557	2,559	3,688	20,745	3.3
Macleay District Hospital	593	146	447	118	429	2,391	4.4
Murwillumbah District Hospital	1,438	705	733	640	709	3,432	2.5
The Tweed Hospital	7,654	3,024	4,630	3,388	4,237	20,670	2.7
Other NNSWLHN	1,128	397	731	232	750	3,936	4.0
Total NNSWLHN	23,356	10,603	12,753	10,916	11,837	64,137	2.8

Northern Sydney Local Health Network (NSLHN)

Hornsby and Ku-Ring-Gai Hospital	3,820	1,084	2,736	936	2,795	14,750	4.0
Manly District Hospital	3,271	622	2,649	948	2,289	11,790	3.6
Mona Vale and District Hospital	3,834	1,635	2,199	1,769	1,871	9,984	2.7
Royal North Shore Hospital	13,140	5,018	8,122	4,834	7,984	50,327	3.9
Ryde Hospital	2,458	600	1,858	896	1,488	9,558	4.0
Other NSLHN	2,293	967	1,326	347	1,305	15,947	9.7
Total NSLHN	28,816	9,926	18,890	9,730	17,732	112,356	4.1

South Eastern Sydney Local Health Network (SESLHN)

Prince of Wales Hospital	9,924	5,439	4,485	4,666	5,071	38,870	4.0
Royal Hospital for Women	3,776	498	3,278	1,104	2,672	12,799	3.4
St George Hospital	13,184	5,609	7,575	5,331	7,400	44,957	3.5
Sutherland Hospital	6,203	2,142	4,061	1,914	3,727	20,494	3.6
Sydney / Sydney Eye Hospital	2,566	1,222	1,344	1,431	1,132	5,426	2.1
Other SESLHN*	1,826	1,314	512	*	*	*	1.0
Total SESLHN	37,479	16,224	21,255	14,449	20,007	122,554	3.6

South Western Sydney Local Health Network (SWSLHN)

Bankstown / Lidcombe Hospital	8,195	2,502	5,693	2,915	5,084	29,458	3.7
Bowral and District Hospital	2,248	576	1,672	1,011	1,223	5,418	2.4
Camden Hospital	492	201	291	229	145	2,248	6.0
Campbelltown Hospital	7,654	1,842	5,812	1,818	5,831	30,718	4.0
Fairfield Hospital	4,264	976	3,288	934	3,194	13,010	3.2
Liverpool Hospital	21,202	10,851	10,351	12,326	8,682	62,796	3.0
Other SWSLHN*	858	452	406	10	308	1,072	3.4
Total SWSLHN	44,913	17,400	27,513	19,243	24,467	144,720	3.3

Southern NSW Local Health Network (SNSWLHN)

Bateman's Bay District Hospital	1,462	559	903	837	544	3,335	2.4
Bega District Hospital	2,052	866	1,186	958	992	4,776	2.4
Cooma Health Service	760	215	545	279	458	1,825	2.5
Goulburn Base Hospital	2,499	1,238	1,261	1,194	1,271	7,276	3.0
Moruya District Hospital	1,997	999	998	1,080	885	4,135	2.1
Pambula District Hospital	661	79	582	272	357	1,712	2.7
Queanbeyan Health Service	1,110	333	777	586	488	2,694	2.5
Other SNSWLHN	738	36	702	201	334	1,688	3.2
Total SNSWLHN	11,279	4,325	6,954	5,407	5,329	27,441	2.6

All episodes

Acute episodes

	All episodes			Acute episodes			
	Total episodes	Planned	Unplanned / other	Same day	Overnight	Total acute bed days	Average length of stay (days)
St Vincent's Health Network (SVHN)							
St Vincent's Hospital, Darlinghurst	9,437	4,790	4,647	5,062	4,366	32,699	3.5
Other SVHN [‡]	476	194	282	*	*	115	38.3
Total SVHN	9,913	4,984	4,929	5,062	4,369	32,814	3.5
Sydney Children's Hospitals Network (SCHN)							
Sydney Children's Hospital	4,406	2,247	2,159	2,338	2,068	10,906	2.5
The Children's Hospital at Westmead	6,683	3,582	3,101	3,078	3,605	21,628	3.2
Total SCHN	11,089	5,829	5,260	5,416	5,673	32,534	2.9
Sydney Local Health Network (SYDLHN)							
Canterbury Hospital	4,080	1,013	3,067	1,079	2,851	12,174	3.1
Concord Hospital	11,908	7,640	4,268	7,087	4,641	44,619	3.8
RPAH Institute of Rheumatology & Orthopaedics	326	*	*	58	268	1,133	3.5
Royal Prince Alfred Hospital	17,011	7,601	9,410	7,260	9,744	65,765	3.9
Other SYDLHN	1,157	*	*	54	827	4,112	4.7
Total SYDLHN	34,482	16,578	17,904	15,538	18,331	127,803	3.8
Western NSW Local Health Network (WNSWLHN)							
Bathurst Base Hospital	2,769	1,305	1,464	1,252	1,439	7,233	2.7
Cowra District Hospital	732	221	511	280	435	1,774	2.5
Dubbo Base Hospital	4,983	2,406	2,577	2,357	2,611	12,669	2.6
Forbes District Hospital	1,026	570	456	661	349	1,931	1.9
Mudgee District Hospital	814	272	542	391	412	2,104	2.6
Orange Base Hospital	4,835	2,082	2,753	2,169	2,581	11,489	2.4
Parkes District Hospital	662	124	538	230	416	2,189	3.4
Other WNSWLHN	3,854	789	3,065	1,418	2,193	16,765	4.6
Total WNSWLHN	19,675	7,769	11,906	8,758	10,436	56,154	2.9
Western Sydney Local Health Network (WSLHN)							
Auburn Hospital	4,574	1,164	3,410	2,115	2,408	9,113	2.0
Blacktown Hospital	6,188	1,310	4,878	1,231	4,913	28,108	4.6
Mount Druitt Hospital	2,918	963	1,955	1,104	1,609	4,599	1.7
Westmead Hospital (all units)	20,924	10,677	10,247	10,715	9,722	64,902	3.2
Other WSLHN	406	*	*	12	381	7,667	19.5
Total WSLHN	35,010	14,120	20,890	15,177	19,033	114,389	3.3

(*) Suppressed due to small numbers and to protect privacy.

(‡) The majority of admissions for smaller hospitals in this LHN are for non-acute admissions resulting in low numbers of patients classified as either 'overnight' or 'same day'.

Source: Admitted Patient Data Collection. Health Information Exchange, NSW Health. Data extracted on 18 April 2011.