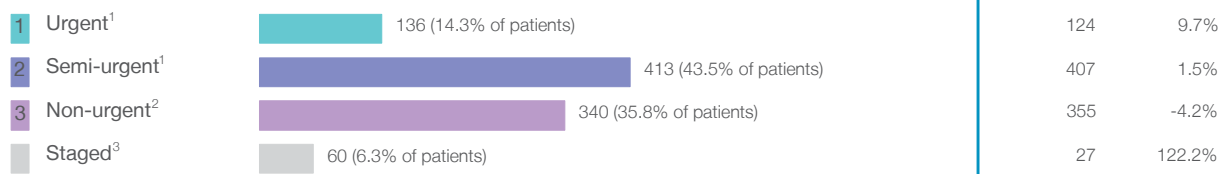


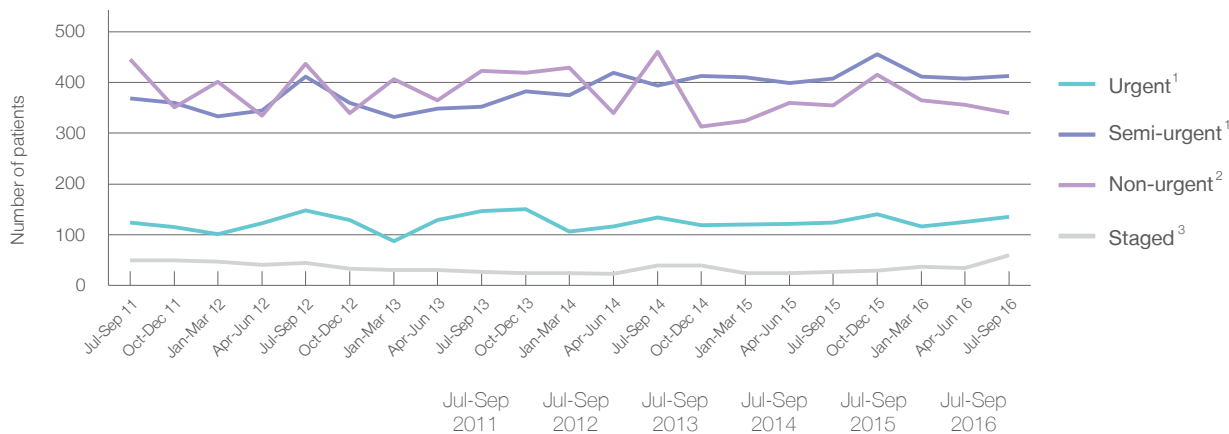
Wyong Hospital: Elective surgery performed

July to September 2016

Patients who received elective surgery by urgency category: 949 patients



Patients who received elective surgery by urgency category by quarter, July 2011 to September 2016



Urgency Category	Jul-Sep 2011	Jul-Sep 2012	Jul-Sep 2013	Jul-Sep 2014	Jul-Sep 2015	Jul-Sep 2016
All categories	988	1,041	949	1,028	913	949
Urgent ¹	124	148	147	134	124	136
Semi-urgent ¹	369	412	352	394	407	413
Non-urgent ²	445	436	423	461	355	340
Staged ³	50	45	27	39	27	60

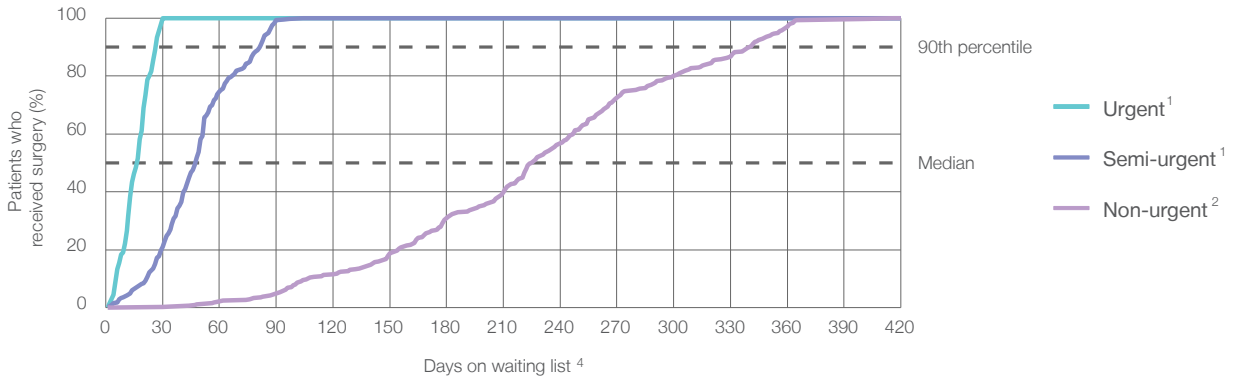
Wyong Hospital: Time waited to receive elective surgery

July to September 2016

Percentage of patients who received surgery within the clinically recommended timeframe

	Recommended:	Percentage	Same period last year	Peer group (this period)
1 Urgent ¹	30 days	100%	100%	99.9%
2 Semi-urgent ¹	90 days	99.3%	100%	98.9%
3 Non-urgent ²	365 days	99.4%	99.7%	96.6%

Percentage of patients who received elective surgery by waiting time (days)



Waiting time (days) for people who received surgery by urgency category

	Peer group (this period)	This hospital (same period last year)	Peer group (same period last year)
1 Urgent: ¹ 136 patients			
Median time to receive surgery	17 days	12	17
90th percentile time to receive surgery	27 days	26	28
2 Semi-urgent: ¹ 413 patients			
Median time to receive surgery	48 days	48	42
90th percentile time to receive surgery	82 days	82	72
3 Non-urgent: ² 340 patients			
Median time to receive surgery	226 days	272	284
90th percentile time to receive surgery	341 days	356	339

Wyong Hospital: Time waited to receive elective surgery

July to September 2016

Median ⁵ waiting time (days) for patients who received elective surgery by specialty of surgeon		Same period last year	Peer group (this period)
Cardiothoracic surgery	n/a (0 patients)	n/a	*
Ear, nose and throat surgery	n/a (0 patients)	n/a	263
General surgery	39 days (210 patients)	48	49
Gynaecology	80 days (79 patients)	55	49
Medical	* (8 patients)	*	21
Neurosurgery	n/a (0 patients)	n/a	n/a
Ophthalmology	141 days (329 patients)	228	295
Orthopaedic surgery	222 days (132 patients)	280	224
Plastic surgery	n/a (0 patients)	n/a	69
Urology	34 days (112 patients)	23	46
Vascular surgery	20 days (79 patients)	17	20

Median ⁵ waiting time (days) for patients who received elective surgery by common procedures ⁷		Same period last year	Peer group (this period)
Abdominal hysterectomy	n/a (0 patients)	*	76
Cataract extraction	140 days (323 patients)	231	299
Cholecystectomy	41 days (43 patients)	61	60
Coronary artery bypass graft	n/a (0 patients)	n/a	n/a
Cystoscopy	32 days (63 patients)	18	39
Haemorrhoidectomy	61 days (12 patients)	*	54
Hysteroscopy	69 days (32 patients)	40	34
Inguinal herniorrhaphy	55 days (39 patients)	60	93
Myringoplasty / Tympanoplasty	n/a (0 patients)	n/a	308
Myringotomy	n/a (0 patients)	n/a	36
Other - General	40 days (14 patients)	25	34
Prostatectomy	* (< 5 patients)	*	62
Septoplasty	n/a (0 patients)	n/a	318
Tonsillectomy	n/a (0 patients)	n/a	286
Total hip replacement	335 days (16 patients)	185	276
Total knee replacement	307 days (35 patients)	302	304
Varicose veins stripping and ligation	90 days (28 patients)	36	175

Wyong Hospital: Elective surgery waiting list

July to September 2016

Patients ready for surgery on waiting list at start of quarter: 1,286 patients

Patients ready for surgery on waiting list at end of quarter: 1,276 patients

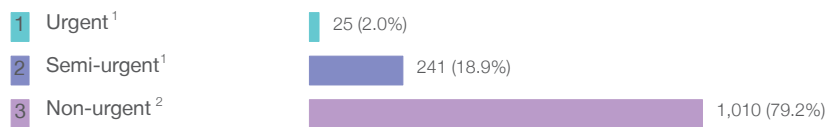
Patients not ready for surgery⁸ on waiting list at end of quarter: 160 patients

	Same period last year	Change since one year ago
Patients ready for surgery on waiting list at start of quarter	1,278	0.6%
Patients ready for surgery on waiting list at end of quarter	1,320	-3.3%
Patients not ready for surgery ⁸ on waiting list at end of quarter	140	14.3%

Wyong Hospital: Patients ready for elective surgery

as at 30th September 2016

Patients ready for surgery on waiting list by urgency category: 1,276 patients



	Same period last year	Change since one year ago
Urgent ¹	25	0.0%
Semi-urgent ¹	242	-0.4%
Non-urgent ²	1,053	-4.1%

Wyong Hospital: Patients ready for elective surgery as at 30th September 2016

Patients ready for elective surgery by specialty of surgeon: 1,276 patients

	As at 30 Sep 2016	Same time last year	Change since one year ago
All specialties	1,276	1,320	-3.3%
Cardiothoracic surgery	0	0	n/a
Ear, nose and throat surgery	0	0	n/a
General surgery	158	217	-27.2%
Gynaecology	73	75	-2.7%
Medical	< 5	< 5	*
Neurosurgery	0	0	n/a
Ophthalmology	656	744	-11.8%
Orthopaedic surgery	305	230	32.6%
Plastic surgery	0	0	n/a
Urology	46	34	35.3%
Vascular surgery	37	19	94.7%

Patients ready for elective surgery for common procedures ⁷

	As at 30 Sep 2016	Same time last year	Change since one year ago
Abdominal hysterectomy	< 5	< 5	*
Cataract extraction	634	715	-11.3%
Cholecystectomy	26	44	-40.9%
Coronary artery bypass graft	0	< 5	n/a
Cystoscopy	17	9	88.9%
Haemorrhoidectomy	11	13	-15.4%
Hysteroscopy	14	16	-12.5%
Inguinal herniorrhaphy	47	59	-20.3%
Myringoplasty / Tympanoplasty	0	< 5	n/a
Myringotomy	0	< 5	n/a
Other - General	7	8	-12.5%
Prostatectomy	10	6	66.7%
Septoplasty	0	< 5	n/a
Tonsillectomy	0	< 5	n/a
Total hip replacement	44	41	7.3%
Total knee replacement	96	82	17.1%
Varicose veins stripping and ligation	28	9	211.1%

Wyong Hospital: Patients ready for elective surgery
as at 30th September 2016

Patients ready for elective surgery, on the waiting list for longer than 12 months

As at 30 Sep 2016 Same time last year

	As at 30 Sep 2016	Same time last year
All specialties	< 5	0

* Suppressed due to small numbers and to protect privacy. Relevant graphs are also suppressed.

< 5 Less than five patients. For measures by urgency category, counts are included in an adjacent category. Relevant graphs are also suppressed.

1. Excluding staged procedures.
2. Excluding staged procedures and cystoscopy.
3. Including non-urgent cystoscopy.
4. Excludes the total number of days the patient was coded as 'not ready for surgery'.
5. This is the number of days it took for half of patients who received elective surgery during the period to be admitted and receive their surgery. The other half took equal to or longer than the median to be admitted for surgery.
6. This is the number of days it took for 90% of patients who received elective surgery during the period to be admitted and receive their surgery. The final 10% of patients took equal to or longer than the 90th percentile.
7. The procedures included in this list are procedures which are high volume; some may be associated with long waiting periods. For a description of these procedures see *Elective Surgery Glossary of Common Procedures, December 2012*.
8. Includes staged procedures, non-urgent cystoscopy, and patients currently not available for personal reasons.

For more information: For details of methods, see the *Technical Supplement: Elective surgery measures, July to September 2016*.

Note: All percentages rounded to whole numbers and therefore percentages may not add to 100%.

Source: Waiting List Collection On-Line System, NSW Health (extracted 17 October 2016.).