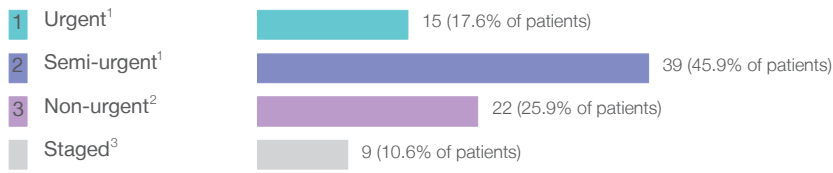


Young Health Service: Elective surgery performed

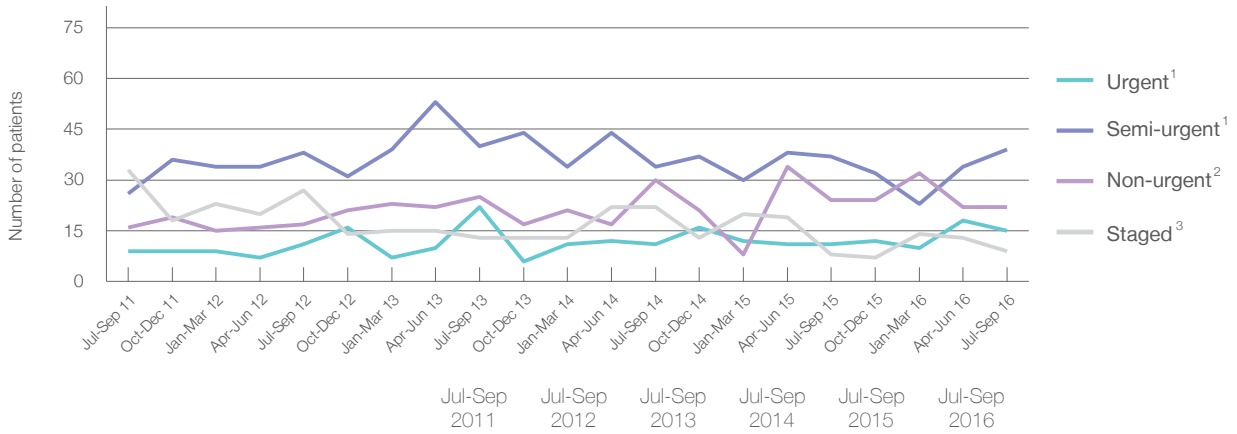
July to September 2016

Patients who received elective surgery by urgency category: 85 patients



Urgency Category	Same period last year	Change since one year ago
1 Urgent ¹	11	36.4%
2 Semi-urgent ¹	37	5.4%
3 Non-urgent ²	24	-8.3%
Staged ³	8	12.5%

Patients who received elective surgery by urgency category by quarter, July 2011 to September 2016



Urgency Category	Jul-Sep 2011	Jul-Sep 2012	Jul-Sep 2013	Jul-Sep 2014	Jul-Sep 2015	Jul-Sep 2016
All categories	84	93	100	97	80	85
Urgent ¹	9	11	22	11	11	15
Semi-urgent ¹	26	38	40	34	37	39
Non-urgent ²	16	17	25	30	24	22
Staged ³	33	27	13	22	8	9

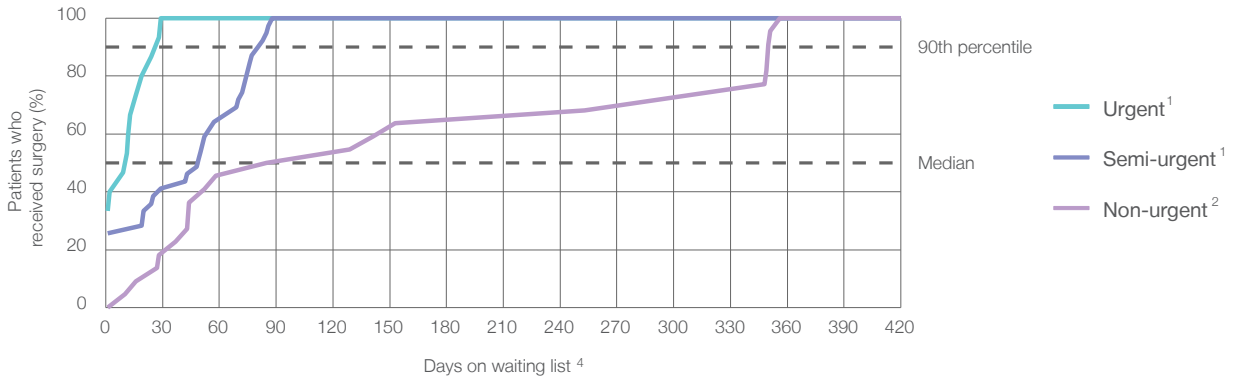
Young Health Service: Time waited to receive elective surgery

July to September 2016

Percentage of patients who received surgery within the clinically recommended timeframe

	Recommended:		Same period last year	Peer group (this period)
1 Urgent¹	30 days	100%	100%	99.6%
2 Semi-urgent¹	90 days	100%	100%	99.2%
3 Non-urgent²	365 days	100%	100%	99.4%

Percentage of patients who received elective surgery by waiting time (days)



Waiting time (days) for people who received surgery by urgency category

		Peer group (this period)	This hospital (same period last year)	Peer group (same period last year)
1 Urgent: ¹ 15 patients				
Median time to receive surgery	11 days	11	17	11
90th percentile time to receive surgery	*	26	*	26
2 Semi-urgent: ¹ 39 patients				
Median time to receive surgery	49 days	35	53	35
90th percentile time to receive surgery	*	76	*	76
3 Non-urgent: ² 22 patients				
Median time to receive surgery	107 days	159	64	185
90th percentile time to receive surgery	*	334	*	354

Young Health Service: Time waited to receive elective surgery

July to September 2016

Median ⁵ waiting time (days) for patients who received elective surgery by specialty of surgeon		Same period last year	Peer group (this period)
Cardiothoracic surgery	n/a (0 patients)	n/a	n/a
Ear, nose and throat surgery	n/a (0 patients)	n/a	112
General surgery	57 days (46 patients)	53	35
Gynaecology	* (9 patients)	22	31
Medical	n/a (0 patients)	n/a	14
Neurosurgery	n/a (0 patients)	n/a	n/a
Ophthalmology	n/a (0 patients)	n/a	175
Orthopaedic surgery	* (5 patients)	*	76
Plastic surgery	n/a (0 patients)	n/a	n/a
Urology	46 days (20 patients)	28	35
Vascular surgery	* (5 patients)	*	141

Median ⁵ waiting time (days) for patients who received elective surgery by common procedures ⁷		Same period last year	Peer group (this period)
Abdominal hysterectomy	n/a (0 patients)	n/a	50
Cataract extraction	n/a (0 patients)	n/a	191
Cholecystectomy	* (5 patients)	*	43
Coronary artery bypass graft	n/a (0 patients)	n/a	n/a
Cystoscopy	n/a (0 patients)	*	25
Haemorrhoidectomy	* (< 5 patients)	*	49
Hysteroscopy	* (< 5 patients)	*	25
Inguinal herniorrhaphy	* (5 patients)	n/a	56
Myringoplasty / Tympanoplasty	n/a (0 patients)	n/a	*
Myringotomy	n/a (0 patients)	n/a	*
Other - General	* (< 5 patients)	*	24
Prostatectomy	n/a (0 patients)	n/a	65
Septoplasty	n/a (0 patients)	n/a	255
Tonsillectomy	n/a (0 patients)	n/a	159
Total hip replacement	n/a (0 patients)	n/a	n/a
Total knee replacement	n/a (0 patients)	n/a	n/a
Varicose veins stripping and ligation	* (5 patients)	*	142

Young Health Service: Elective surgery waiting list

July to September 2016

Patients ready for surgery on waiting list at start of quarter: 81 patients

Patients ready for surgery on waiting list at end of quarter: 55 patients

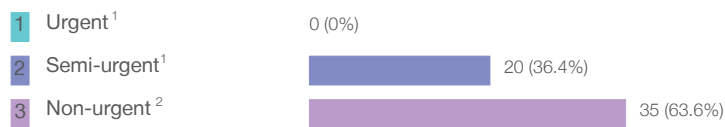
Patients not ready for surgery⁸ on waiting list at end of quarter: 36 patients

	Same period last year	Change since one year ago
Patients ready for surgery on waiting list at start of quarter	76	6.6%
Patients ready for surgery on waiting list at end of quarter	78	-29.5%
Patients not ready for surgery ⁸ on waiting list at end of quarter	21	71.4%

Young Health Service: Patients ready for elective surgery

as at 30th September 2016

Patients ready for surgery on waiting list by urgency category: 55 patients



	Same period last year	Change since one year ago
Urgent ¹	< 5	*
Semi-urgent ¹	29	-28.6%
Non-urgent ²	49	-28.6%

Young Health Service: Patients ready for elective surgery as at 30th September 2016

Patients ready for elective surgery by specialty of surgeon: 55 patients

	As at 30 Sep 2016	Same time last year	Change since one year ago
All specialties	55	78	-29.5%
Cardiothoracic surgery	0	0	n/a
Ear, nose and throat surgery	0	0	n/a
General surgery	36	56	-35.7%
Gynaecology	< 5	5	*
Medical	0	0	n/a
Neurosurgery	0	0	n/a
Ophthalmology	0	0	n/a
Orthopaedic surgery	< 5	8	*
Plastic surgery	0	0	n/a
Urology	11	5	120.0%
Vascular surgery	< 5	< 5	*

Patients ready for elective surgery for common procedures ⁷

	As at 30 Sep 2016	Same time last year	Change since one year ago
Abdominal hysterectomy	0	< 5	n/a
Cataract extraction	0	< 5	n/a
Cholecystectomy	< 5	< 5	*
Coronary artery bypass graft	0	< 5	n/a
Cystoscopy	0	< 5	n/a
Haemorrhoidectomy	0	< 5	n/a
Hysteroscopy	0	< 5	*
Inguinal herniorrhaphy	< 5	6	*
Myringoplasty / Tympanoplasty	0	< 5	n/a
Myringotomy	0	< 5	n/a
Other - General	< 5	< 5	*
Prostatectomy	0	< 5	n/a
Septoplasty	0	< 5	n/a
Tonsillectomy	0	< 5	n/a
Total hip replacement	0	< 5	n/a
Total knee replacement	0	< 5	n/a
Varicose veins stripping and ligation	< 5	6	*

Young Health Service: Patients ready for elective surgery
as at 30th September 2016

Patients ready for elective surgery, on the waiting list for longer than 12 months

As at 30 Sep 2016 Same time last year

	As at 30 Sep 2016	Same time last year
All specialties	0	0

* Suppressed due to small numbers and to protect privacy. Relevant graphs are also suppressed.

< 5 Less than five patients. For measures by urgency category, counts are included in an adjacent category. Relevant graphs are also suppressed.

1. Excluding staged procedures.
2. Excluding staged procedures and cystoscopy.
3. Including non-urgent cystoscopy.
4. Excludes the total number of days the patient was coded as 'not ready for surgery'.
5. This is the number of days it took for half of patients who received elective surgery during the period to be admitted and receive their surgery. The other half took equal to or longer than the median to be admitted for surgery.
6. This is the number of days it took for 90% of patients who received elective surgery during the period to be admitted and receive their surgery. The final 10% of patients took equal to or longer than the 90th percentile.
7. The procedures included in this list are procedures which are high volume; some may be associated with long waiting periods. For a description of these procedures see *Elective Surgery Glossary of Common Procedures, December 2012*.
8. Includes staged procedures, non-urgent cystoscopy, and patients currently not available for personal reasons.

For more information: For details of methods, see the *Technical Supplement: Elective surgery measures, July to September 2016*.

Note: All percentages rounded to whole numbers and therefore percentages may not add to 100%.

Source: Waiting List Collection On-Line System, NSW Health (extracted 17 October 2016.).