

Moruya District Hospital: Emergency department (ED) overview

July to September 2016

All presentations:¹ 2,441 patients

Emergency presentations:² 2,303 patients

Same period last year	Change since one year ago
2,230	9.5%
2,118	8.7%

Moruya District Hospital: Time patients waited to start treatment³

July to September 2016

Triage 2 Emergency (e.g. chest pain, severe burns): 307 patients

Median time to start treatment⁴ 7 minutes
 95th percentile time to start treatment⁵ 34 minutes

Triage 3 Urgent (e.g. moderate blood loss, dehydration): 774 patients

Median time to start treatment⁴ 17 minutes
 95th percentile time to start treatment⁵ 76 minutes

Triage 4 Semi-urgent (e.g. sprained ankle, earache): 880 patients

Median time to start treatment⁴ 22 minutes
 95th percentile time to start treatment⁵ 123 minutes

Triage 5 Non-urgent (e.g. small cuts or abrasions): 321 patients

Median time to start treatment⁴ 22 minutes
 95th percentile time to start treatment⁵ 143 minutes

Same period last year	NSW (this period)
251	
7 minutes	8 minutes
38 minutes	41 minutes
669	
20 minutes	21 minutes
119 minutes	103 minutes
832	
27 minutes	27 minutes
154 minutes	139 minutes
352	
28 minutes	24 minutes
143 minutes	138 minutes

Moruya District Hospital: Time from presentation until leaving the ED

July to September 2016

Attendances used to calculate time to leaving the ED:⁶ 2,441 patients

Percentage of patients who spent four hours or less in the ED 73.4%

Same period last year	Change since one year ago
2,230	9.5%
72.2%	

* Suppressed due to small number of patients and to protect privacy. Relevant graphs are also suppressed.

- All emergency and non-emergency attendances at the emergency department (ED).
- All attendances that have a triage category and are coded as emergency presentations or unplanned return visits.
- Some patients are excluded from ED time measures due to calculation requirements. For details, see the Technical Supplement: Emergency department measures, July to September 2016.
- The median is the time by which half of patients started treatment. The other half of patients waited equal to or longer than this time.
- The 95th percentile is the time by which 95% of patients started treatment. The final 5% of patients waited equal to or longer than this time.
- All presentations that have a departure time.

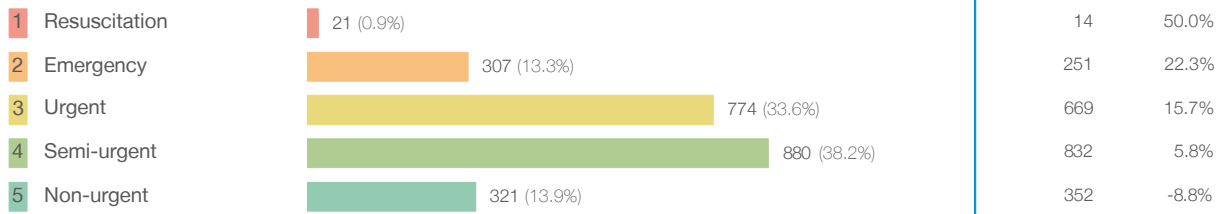
Note: Presentation time is the earlier time recorded for clerical registration or the triage process. Treatment time is the earliest time recorded when a healthcare professional provides medical care relevant to the patient's presenting problems.

Source: Health Information Exchange, NSW Health (extracted 20 October 2016).

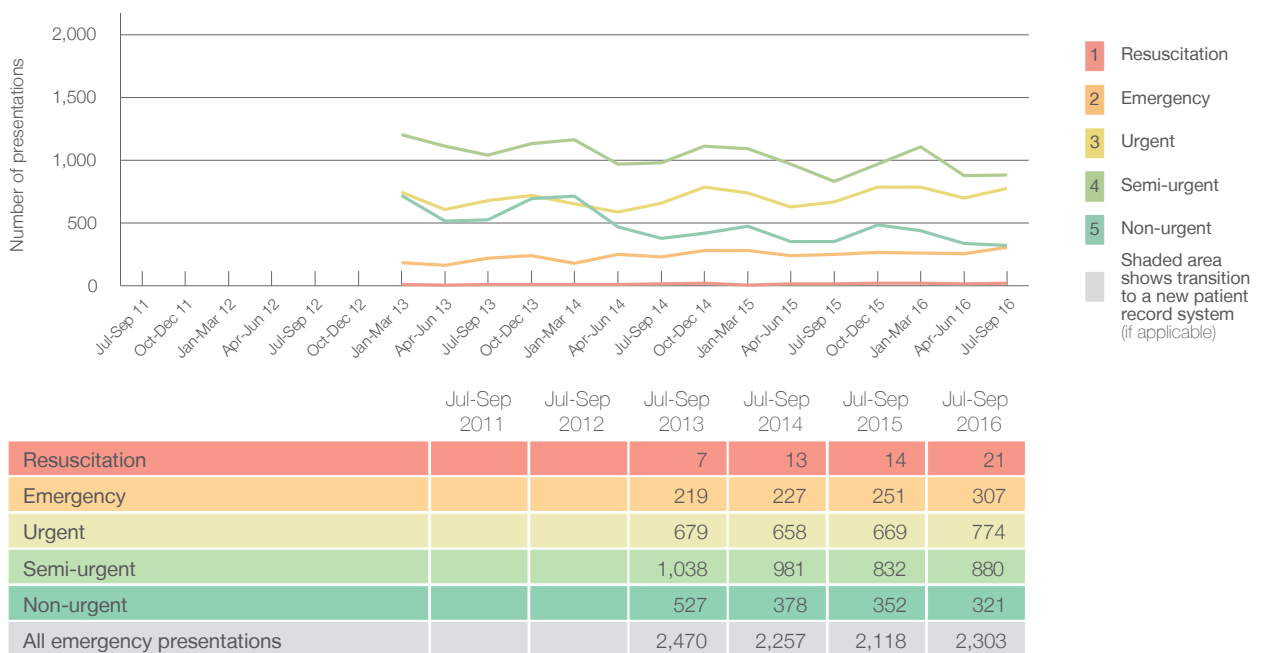
Moruya District Hospital: Patients presenting to the emergency department July to September 2016

All presentations:¹ 2,441 patients

Emergency presentations² by triage category: 2,303 patients



Emergency presentations² by quarter, July 2011 to September 2016 ^{† §}



Moruya District Hospital: Patients arriving by ambulance July to September 2016

Arrivals used to calculate transfer of care time:⁷ 558 patients

ED Transfer of care time



- (†) Data points are not shown in graphs for quarters when patient numbers are too small.
- (‡) Caution is advised when interpreting abrupt changes over time at the hospital level. For example, performance before and after transition to a new information system is not directly comparable. For more information, see Background Paper: Approaches to reporting time measures of emergency department performance, December 2011.
- (§) Quarterly information for this hospital is shown where data are available from the Health Information Exchange, NSW Health. For more information, see Background Paper: Approaches to reporting time measures of emergency department performance, December 2011.

Moruya District Hospital: Time patients waited to start treatment, triage 2 July to September 2016

Triage 2 Emergency (e.g. chest pain, severe burns)

Number of triage 2 patients: 307

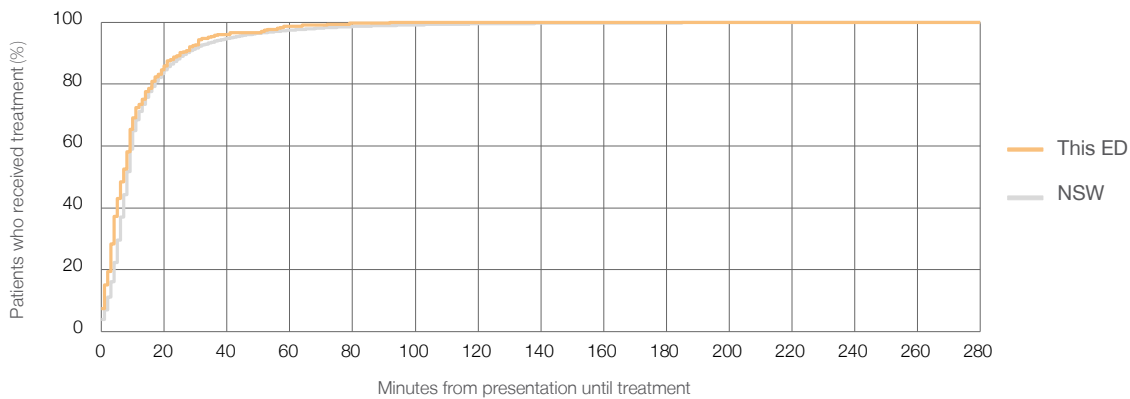
Number of triage 2 patients used to calculate waiting time:³ 304

Median time to start treatment⁴ 7 minutes

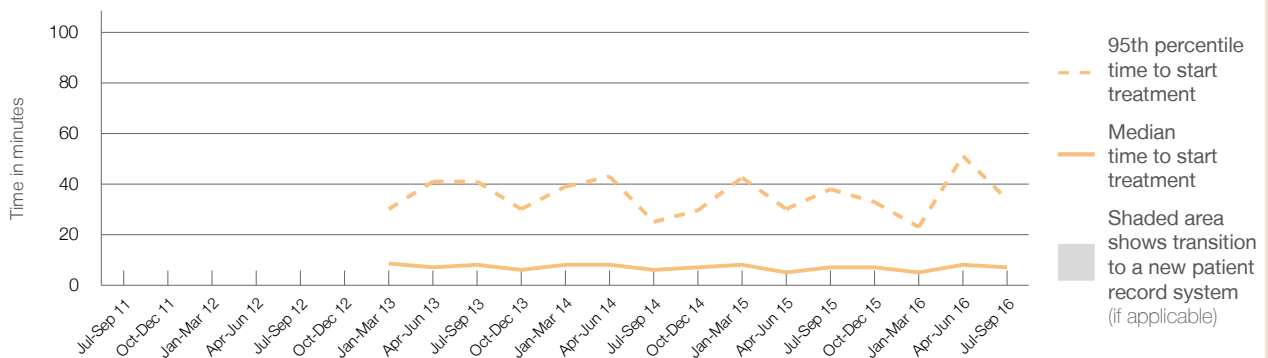
95th percentile time to start treatment⁵ 34 minutes

Same period last year	NSW (this period)
251	245
7 minutes	8 minutes
38 minutes	41 minutes

Percentage of triage 2 patients who received treatment by time, July to September 2016



Time patients waited to start treatment (minutes) for triage 2 patients, July 2011 to September 2016^{†‡§}



	Jul-Sep 2011	Jul-Sep 2012	Jul-Sep 2013	Jul-Sep 2014	Jul-Sep 2015	Jul-Sep 2016
Median time to start treatment ⁴ (minutes)			8	6	7	7
95th percentile time to start treatment ⁵ (minutes)			41	25	38	34

(†) Data points are not shown in graphs for quarters when patient numbers are too small.

(‡) Caution is advised when interpreting abrupt changes over time at the hospital level. For example, performance before and after transition to a new information system is not directly comparable. For more information, see Background Paper: Approaches to reporting time measures of emergency department performance, December 2011.

(§) Quarterly information for this hospital is shown where data are available from the Health Information Exchange, NSW Health. For more information, see Background Paper: Approaches to reporting time measures of emergency department performance, December 2011.

Moruya District Hospital: Time patients waited to start treatment, triage 3 July to September 2016

Triage 3 Urgent (e.g. moderate blood loss, dehydration)

Number of triage 3 patients: 774

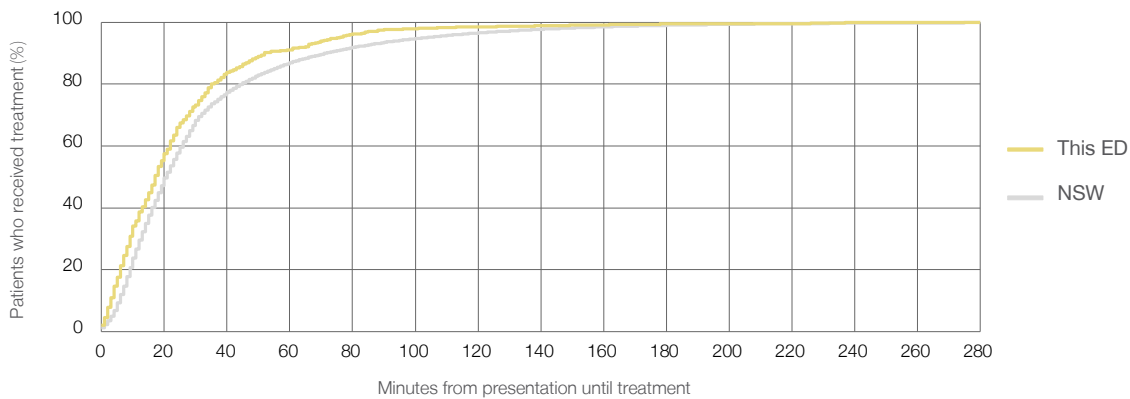
Number of triage 3 patients used to calculate waiting time:³ 750

Median time to start treatment⁴ 17 minutes

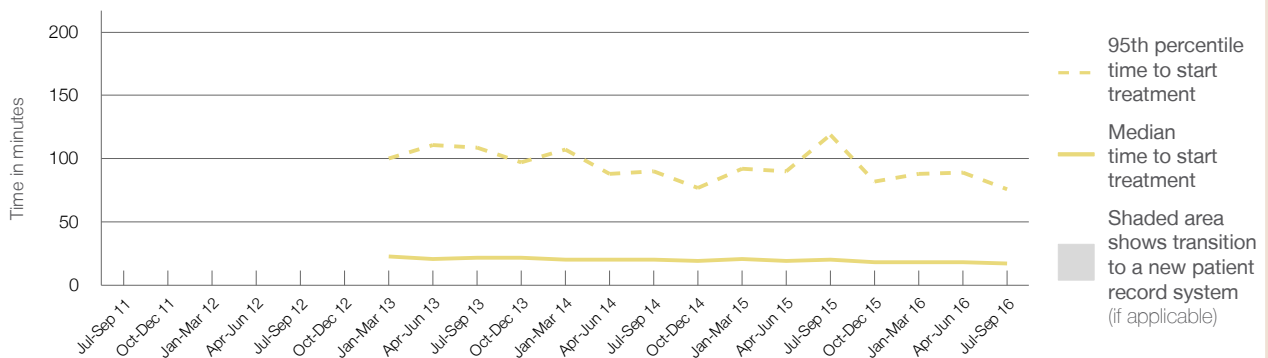
95th percentile time to start treatment⁵ 76 minutes

Same period last year	NSW (this period)
669	
655	
20 minutes	21 minutes
119 minutes	103 minutes

Percentage of triage 3 patients who received treatment by time, July to September 2016



Time patients waited to start treatment (minutes) for triage 3 patients, July 2011 to September 2016^{†‡§}



	Jul-Sep 2011	Jul-Sep 2012	Jul-Sep 2013	Jul-Sep 2014	Jul-Sep 2015	Jul-Sep 2016
Median time to start treatment ⁴ (minutes)			22	20	20	17
95th percentile time to start treatment ⁵ (minutes)			109	90	119	76

(†) Data points are not shown in graphs for quarters when patient numbers are too small.

(‡) Caution is advised when interpreting abrupt changes over time at the hospital level. For example, performance before and after transition to a new information system is not directly comparable. For more information, see Background Paper: Approaches to reporting time measures of emergency department performance, December 2011.

(§) Quarterly information for this hospital is shown where data are available from the Health Information Exchange, NSW Health. For more information, see Background Paper: Approaches to reporting time measures of emergency department performance, December 2011.

Moruya District Hospital: Time patients waited to start treatment, triage 4 July to September 2016

Triage 4 Semi-urgent (e.g. sprained ankle, earache)

Number of triage 4 patients: 880

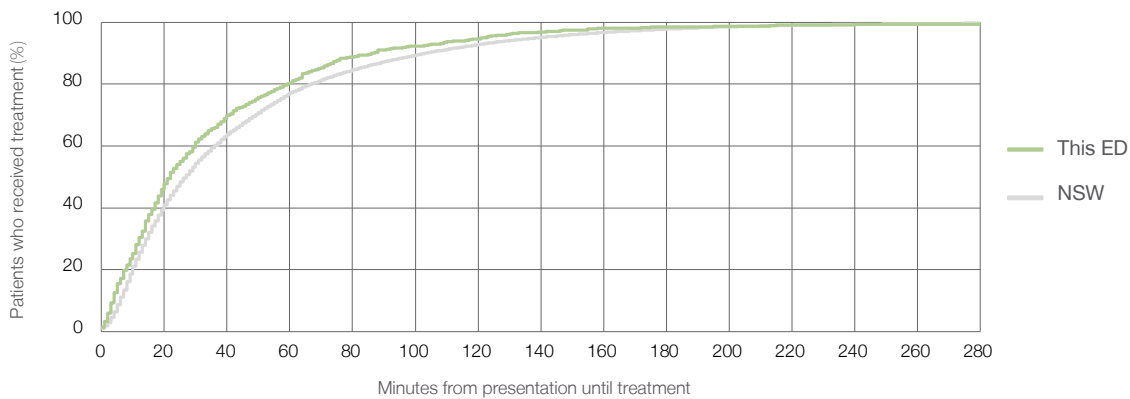
Number of triage 4 patients used to calculate waiting time:³ 804

Median time to start treatment⁴ 22 minutes

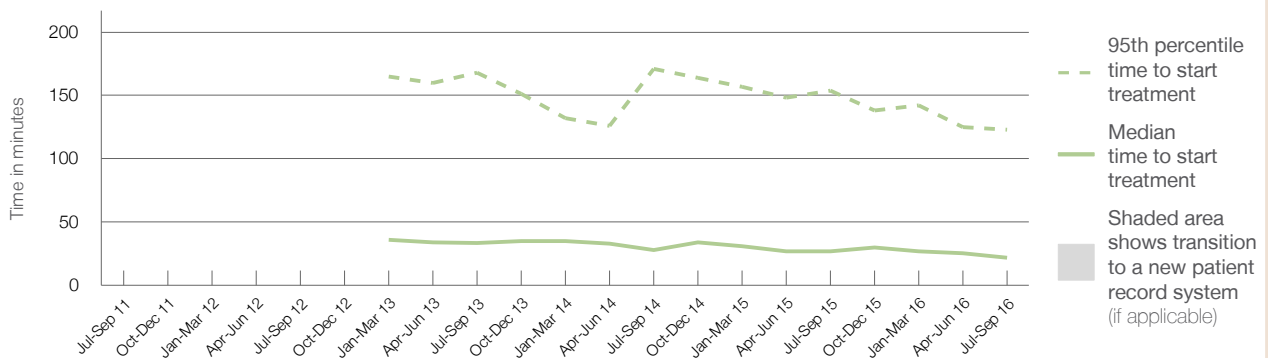
95th percentile time to start treatment⁵ 123 minutes

Same period last year	NSW (this period)
832	751
27 minutes	27 minutes
154 minutes	139 minutes

Percentage of triage 4 patients who received treatment by time, July to September 2016



Time patients waited to start treatment (minutes) for triage 4 patients, July 2011 to September 2016^{†‡§}



	Jul-Sep 2011	Jul-Sep 2012	Jul-Sep 2013	Jul-Sep 2014	Jul-Sep 2015	Jul-Sep 2016
Median time to start treatment ⁴ (minutes)			34	28	27	22
95th percentile time to start treatment ⁵ (minutes)			168	171	154	123

(†) Data points are not shown in graphs for quarters when patient numbers are too small.

(‡) Caution is advised when interpreting abrupt changes over time at the hospital level. For example, performance before and after transition to a new information system is not directly comparable. For more information, see Background Paper: Approaches to reporting time measures of emergency department performance, December 2011.

(§) Quarterly information for this hospital is shown where data are available from the Health Information Exchange, NSW Health. For more information, see Background Paper: Approaches to reporting time measures of emergency department performance, December 2011.

Moruya District Hospital: Time patients waited to start treatment, triage 5 July to September 2016

Triage 5 Non-urgent (e.g. small cuts or abrasions)

Number of triage 5 patients: 321

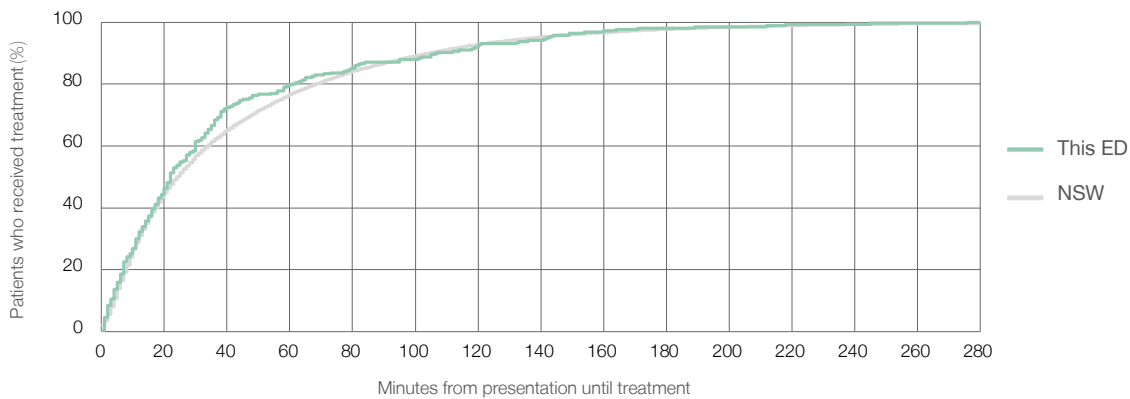
Number of triage 5 patients used to calculate waiting time:³ 257

Median time to start treatment⁴ 22 minutes

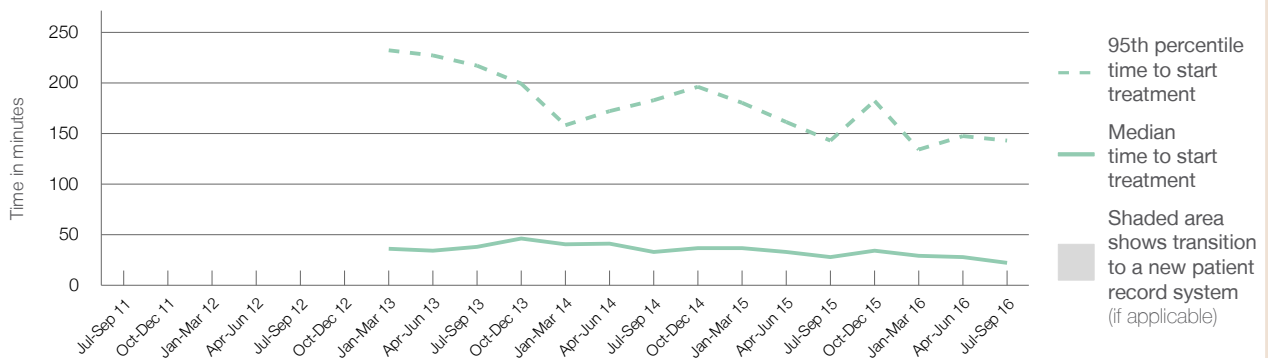
95th percentile time to start treatment⁵ 143 minutes

	Same period last year	NSW (this period)
Number of triage 5 patients	352	267
Median time to start treatment ⁴	28 minutes	24 minutes
95th percentile time to start treatment ⁵	143 minutes	138 minutes

Percentage of triage 5 patients who received treatment by time, July to September 2016



Time patients waited to start treatment (minutes) for triage 5 patients, July 2011 to September 2016^{†‡§}



	Jul-Sep 2011	Jul-Sep 2012	Jul-Sep 2013	Jul-Sep 2014	Jul-Sep 2015	Jul-Sep 2016
Median time to start treatment ⁴ (minutes)			38	33	28	22
95th percentile time to start treatment ⁵ (minutes)			217	183	143	143

(†) Data points are not shown in graphs for quarters when patient numbers are too small.

(‡) Caution is advised when interpreting abrupt changes over time at the hospital level. For example, performance before and after transition to a new information system is not directly comparable. For more information, see Background Paper: Approaches to reporting time measures of emergency department performance, December 2011.

(§) Quarterly information for this hospital is shown where data are available from the Health Information Exchange, NSW Health. For more information, see Background Paper: Approaches to reporting time measures of emergency department performance, December 2011.

Moruya District Hospital: Time patients spent in the ED

July to September 2016

All presentations:¹ 2,441 patients

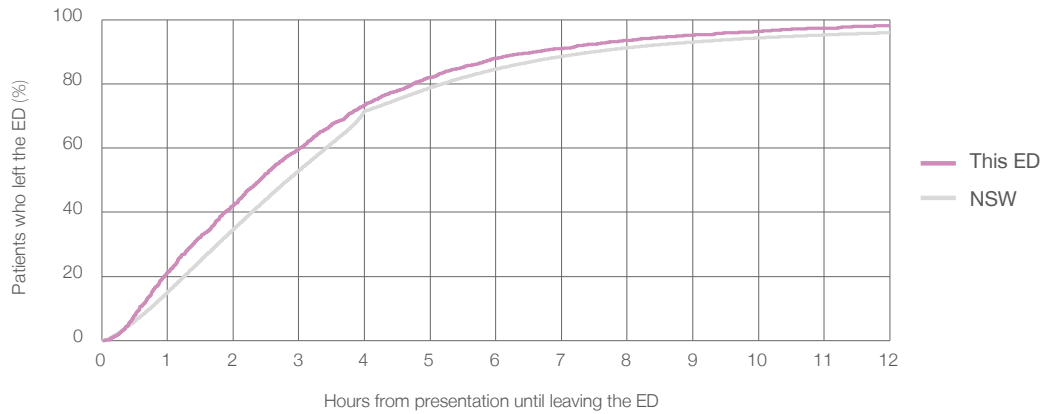
Presentations used to calculate time to leaving the ED:⁶ 2,441 patients

Median time spent in the ED⁸ 2 hours and 24 minutes

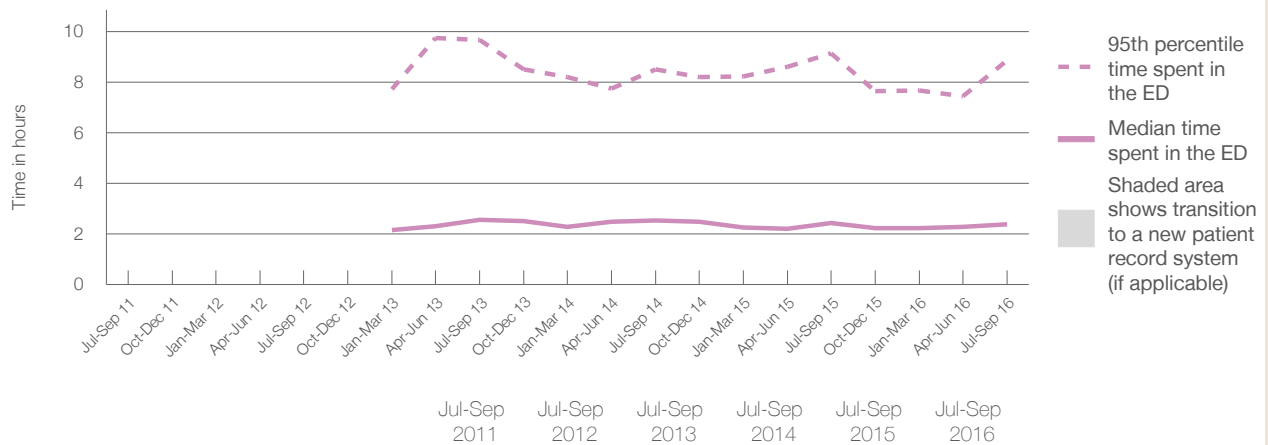
95th percentile time spent in the ED⁹ 8 hours and 51 minutes

Same period last year	NSW (this period)
2,230	2,230
2 hours and 27 minutes	2 hours and 50 minutes
9 hours and 9 minutes	10 hours and 43 minutes

Percentage of patients who left the ED by time, July to September 2016



Time patients spent in the ED, by quarter, July 2011 to September 2016^{†‡§}



	Jul-Sep 2011	Jul-Sep 2012	Jul-Sep 2013	Jul-Sep 2014	Jul-Sep 2015	Jul-Sep 2016
Median time to leaving the ED ⁸ (hours, minutes)			2h 34m	2h 32m	2h 27m	2h 24m
95th percentile time to leaving the ED ⁹ (hours, minutes)			9h 40m	8h 30m	9h 9m	8h 51m

(†) Data points are not shown in graphs for quarters when patient numbers are too small.

(‡) Caution is advised when interpreting abrupt changes over time at the hospital level. For example, performance before and after transition to a new information system is not directly comparable. For more information, see Background Paper: Approaches to reporting time measures of emergency department performance, December 2011.

(§) Quarterly information for this hospital is shown where data are available from the Health Information Exchange, NSW Health. For more information, see Background Paper: Approaches to reporting time measures of emergency department performance, December 2011.

Moruya District Hospital: Time patients spent in the ED

By mode of separation

July to September 2016

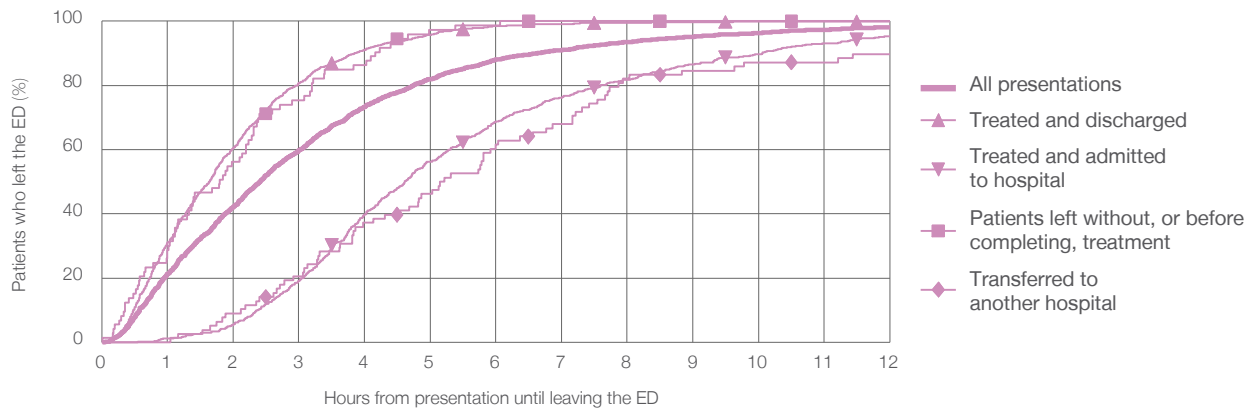
All presentations:¹ 2,441 patients

Presentations used to calculate time to leaving the ED:⁶ 2,441 patients

Treated and discharged	1,481 (60.7%)
Treated and admitted to hospital	759 (31.1%)
Patient left without, or before completing, treatment	73 (3.0%)
Transferred to another hospital	78 (3.2%)
Other	50 (2.0%)

Same period last year	Change since one year ago
2,230	9.5%
1,370	8.1%
667	13.8%
104	-29.8%
88	-11.4%
1	4900.0%

Percentage of patients who left the ED by time and mode of separation, July to September 2016 ^{††§}



1 hour 2 hours 3 hours 4 hours 6 hours 8 hours 10 hours 12 hours

	1 hour	2 hours	3 hours	4 hours	6 hours	8 hours	10 hours	12 hours
Treated and discharged	31.0%	60.6%	80.8%	91.1%	98.4%	99.6%	99.9%	99.9%
Treated and admitted to hospital	1.2%	5.5%	19.1%	39.8%	68.8%	81.7%	89.7%	95.3%
Patient left without, or before completing, treatment	28.8%	56.2%	75.3%	86.3%	98.6%	100%	100%	100%
Transferred to another hospital	0%	9.0%	20.5%	37.2%	61.5%	82.1%	87.2%	89.7%
All presentations	21.3%	42.2%	59.8%	73.4%	88.0%	93.5%	96.3%	98.2%

(†) Data points are not shown in graphs for quarters when patient numbers are too small.

(††) Caution is advised when interpreting abrupt changes over time at the hospital level. For example, performance before and after transition to a new information system is not directly comparable. For more information, see Background Paper: Approaches to reporting time measures of emergency department performance, December 2011.

(§) Quarterly information for this hospital is shown where data are available from the Health Information Exchange, NSW Health. For more information, see Background Paper: Approaches to reporting time measures of emergency department performance, December 2011.

Moruya District Hospital: Time spent in the ED
 Percentage of patients who spent four hours or less in the ED
 July to September 2016

All presentations at the emergency department: ¹ 2,441 patients

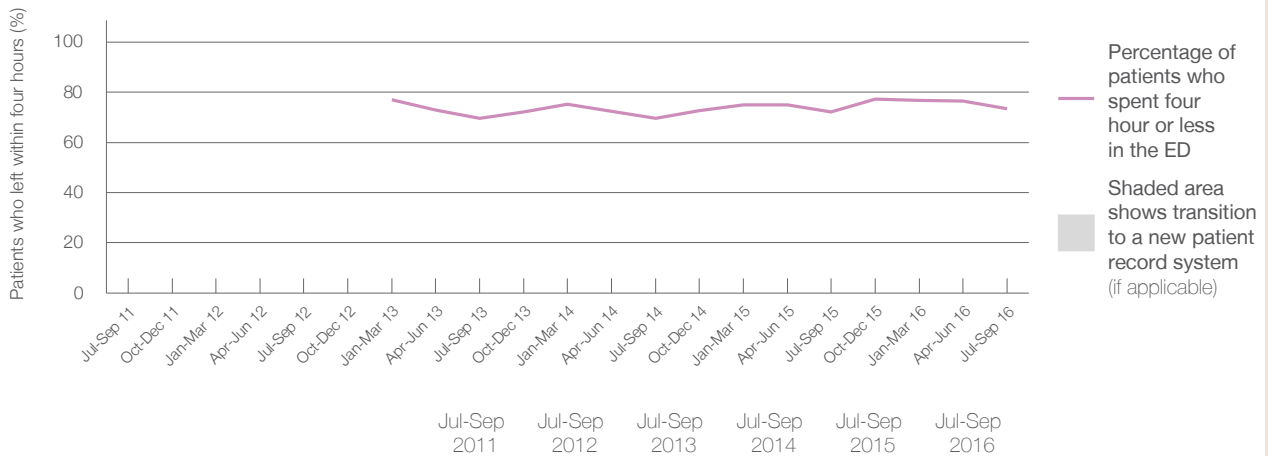
Presentations used to calculate time to leaving the ED: ⁶ 2,441 patients

Percentage of patients who spent four hours or less in the ED



	Same period last year	Change since one year ago
All presentations at the emergency department	2,230	9.5%
Presentations used to calculate time to leaving the ED	2,230	9.5%
Percentage of patients who spent four hours or less in the ED	72.2%	

Percentage of patients who spent four hours or less in the ED, by quarter, July 2011 to September 2016 ^{†‡§}



Patients who left within four hours (%)						
			69.7%	69.5%	72.2%	73.4%

* Suppressed due to small numbers and to protect privacy. Relevant graphs are also suppressed.
 † Data points are not shown in graphs for quarters when patient numbers were too small.
 ‡ Caution is advised when interpreting abrupt changes over time at the hospital level. For example, performance before and after transition to a new information system is not directly comparable. For more information see Background Paper: Approaches to reporting time measures of emergency department performance, December 2011.
 § Quarterly information for this hospital is shown where data are available from the Health Information Exchange, NSW Health. For more information, see Background Paper: Approaches to reporting time measures of emergency department performance, December 2011.

- All emergency and non-emergency presentations at the emergency department (ED).
- All presentations that have a triage category and are coded as emergency presentations or unplanned return visits.
- Some patients are excluded from ED time measures due to calculation requirements. For details, see the Technical Supplement: Emergency department measures, July to September 2016.
- The median is the time by which half of patients started treatment. The other half of patients took equal to or longer than this time.
- The 95th percentile is the time by which 95% of patients started treatment. The final 5% of patients took equal to or longer than this time.
- All presentations that have a departure time.
- Transfer of care time refers to the period between arrival of patients at the ED by ambulance and the transfer of responsibility for their care from paramedics to ED staff in an ED treatment zone. For more information see Spotlight on Measurement: measuring transfer of care from the ambulance to the emergency department.
- The median is the time by which half of patients left the ED. The other half of patients took equal to or longer than this time.
- The 95th percentile is the time by which 95% of patients left the ED. The final 5% of patients took equal to or longer than this time.

Note: Presentation time is the earlier of times recorded for the start of clerical registration or the triage process. Treatment time is the earliest time recorded when a healthcare professional provides medical care that is relevant to the patient's presenting problems. For patients who were treated and discharged, departure time is the time when treatment was completed. For all other patients, departure time is the time when the patient actually left the ED.

Note: All percentages are rounded and therefore percentages may not add to 100%.

Sources: ED data from Health Information Exchange, NSW Health (extracted 20 October 2016).
 Transfer of care data from Transfer of Care Reporting System (extracted 20 October 2016).