

Moruya District Hospital: Emergency department (ED) overview

October to December 2018

All presentations:¹ 3,020 patients
Emergency presentations:² 2,859 patients

Same period last year	Change since one year ago
2,842	6%
2,643	8%

Moruya District Hospital: Time patients waited to start treatment³

October to December 2018

Triage 2 Emergency (e.g. chest pain, severe burns): 355 patients

Median time to start treatment⁴ 10 minutes
90th percentile time to start treatment⁵ 32 minutes

Triage 3 Urgent (e.g. moderate blood loss, dehydration): 1,052 patients

Median time to start treatment⁴ 21 minutes
90th percentile time to start treatment⁵ 71 minutes

Triage 4 Semi-urgent (e.g. sprained ankle, earache): 1,084 patients

Median time to start treatment⁴ 28 minutes
90th percentile time to start treatment⁵ 105 minutes

Triage 5 Non-urgent (e.g. small cuts or abrasions): 347 patients

Median time to start treatment⁴ 24 minutes
90th percentile time to start treatment⁵ 116 minutes

Same period last year	NSW (this period)
325	
8 minutes	8 minutes
34 minutes	26 minutes
973	
17 minutes	20 minutes
57 minutes	72 minutes
972	
28 minutes	26 minutes
95 minutes	104 minutes
351	
24 minutes	23 minutes
103 minutes	104 minutes

Moruya District Hospital: Time from presentation until leaving the ED

October to December 2018

Attendances used to calculate time to leaving the ED:⁶ 3,019 patients

Percentage of patients who spent four hours or less in the ED 78%

Same period last year	Change since one year ago
2,842	6%
80%	

* Suppressed due to small number of patients and to protect privacy. Relevant graphs are also suppressed.

- All emergency and non-emergency attendances at the emergency department (ED).
- All attendances that have a triage category and are coded as emergency presentations or unplanned return visits.
- Some patients are excluded from ED time measures due to calculation requirements. For details, see the *Technical Supplement: October to December 2018*.
- The median is the time by which half of patients started treatment. The other half of patients waited equal to or longer than this time.
- The 90th percentile is the time by which 90% of patients started treatment. The final 10% of patients waited equal to or longer than this time.
- All presentations that have a departure time.

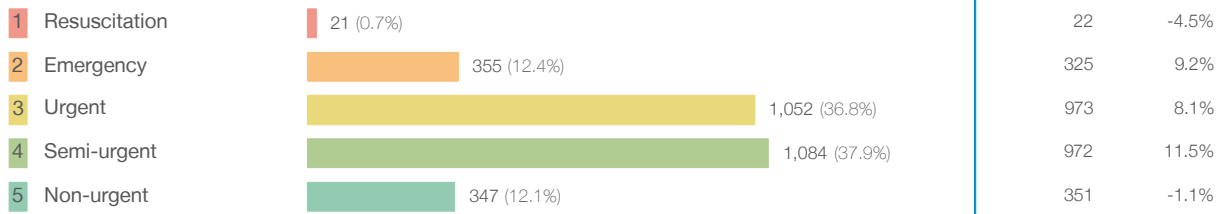
Note: Presentation time is the earlier time recorded for clerical registration or the triage process. Treatment time is the earliest time recorded when a healthcare professional provides medical care relevant to the patient's presenting problems.

Source: Health Information Exchange, NSW Health (extracted 22 January 2019).

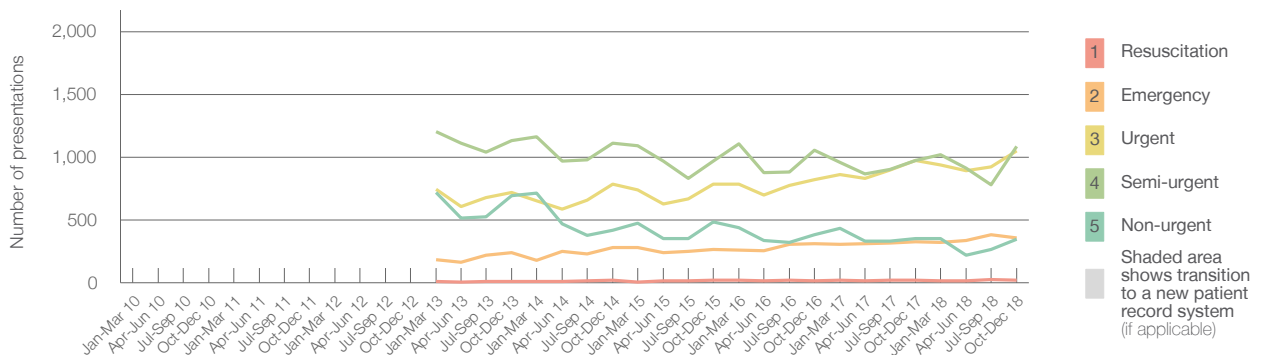
Moruya District Hospital: Patients presenting to the emergency department October to December 2018

All presentations:¹ 3,020 patients

Emergency presentations² by triage category: 2,859 patients



Emergency presentations² by quarter, January 2010 to December 2018 ^{† §}

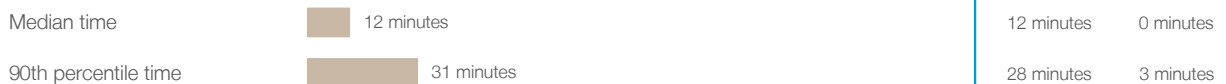


	Oct-Dec 2010	Oct-Dec 2011	Oct-Dec 2012	Oct-Dec 2013	Oct-Dec 2014	Oct-Dec 2015	Oct-Dec 2016	Oct-Dec 2017	Oct-Dec 2018
Resuscitation				12	18	19	15	22	21
Emergency				239	281	264	308	325	355
Urgent				721	785	783	823	973	1,052
Semi-urgent				1,134	1,110	970	1,053	972	1,084
Non-urgent				693	420	485	380	351	347
All emergency presentations				2,799	2,614	2,521	2,579	2,643	2,859

Moruya District Hospital: Patients arriving by ambulance October to December 2018

Arrivals used to calculate transfer of care time:⁷ 565 patients

ED Transfer of care time



- (†) Data points are not shown in graphs for quarters when patient numbers are too small.
- (‡) Caution is advised when interpreting abrupt changes over time at the hospital level. For example, performance before and after transition to a new information system is not directly comparable. For more information, see Background Paper: Approaches to reporting time measures of emergency department performance, December 2011.
- (§) Quarterly information for this hospital is shown where data are available from the Health Information Exchange, NSW Health. For more information, see Background Paper: Approaches to reporting time measures of emergency department performance, December 2011.

Moruya District Hospital: Time patients waited to start treatment, triage 2 October to December 2018

Triage 2 Emergency (e.g. chest pain, severe burns)

Number of triage 2 patients: 355

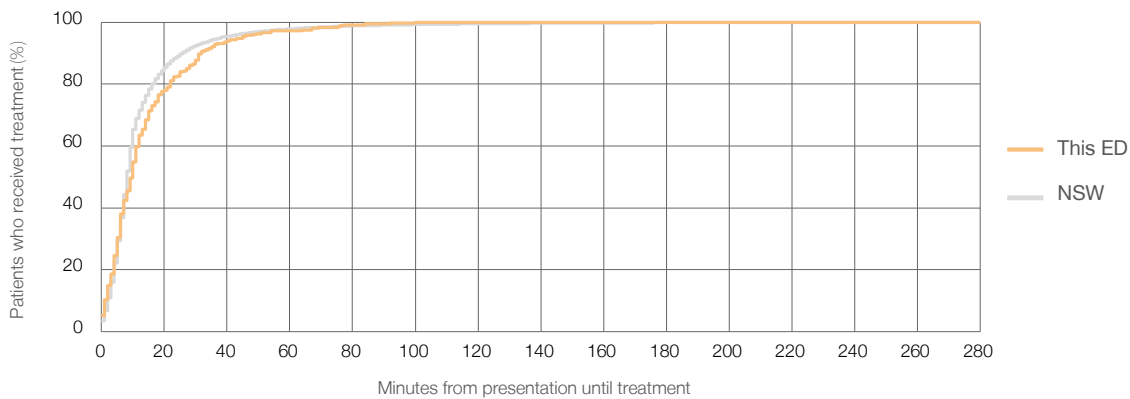
Number of triage 2 patients used to calculate waiting time:³ 349

Median time to start treatment⁴ 10 minutes

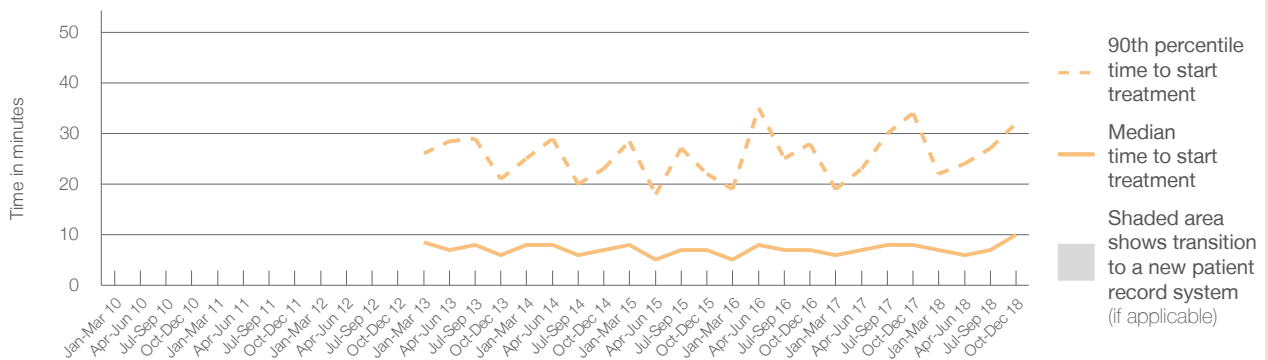
90th percentile time to start treatment⁵ 32 minutes

Same period last year	NSW (this period)
325	319
8 minutes	8 minutes
34 minutes	26 minutes

Percentage of triage 2 patients who received treatment by time, October to December 2018



Time patients waited to start treatment (minutes) for triage 2 patients, January 2010 to December 2018^{†‡§}



	Oct-Dec 2010	Oct-Dec 2011	Oct-Dec 2012	Oct-Dec 2013	Oct-Dec 2014	Oct-Dec 2015	Oct-Dec 2016	Oct-Dec 2017	Oct-Dec 2018
Median time to start treatment ⁴ (minutes)				6	7	7	7	8	10
90th percentile time to start treatment ⁵ (minutes)				21	23	22	28	34	32

(†) Data points are not shown in graphs for quarters when patient numbers are too small.

(‡) Caution is advised when interpreting abrupt changes over time at the hospital level. For example, performance before and after transition to a new information system is not directly comparable. For more information, see Background Paper: Approaches to reporting time measures of emergency department performance, December 2011.

(§) Quarterly information for this hospital is shown where data are available from the Health Information Exchange, NSW Health. For more information, see Background Paper: Approaches to reporting time measures of emergency department performance, December 2011.

Moruya District Hospital: Time patients waited to start treatment, triage 3 October to December 2018

Triage 3 Urgent (e.g. moderate blood loss, dehydration)

Number of triage 3 patients: 1,052

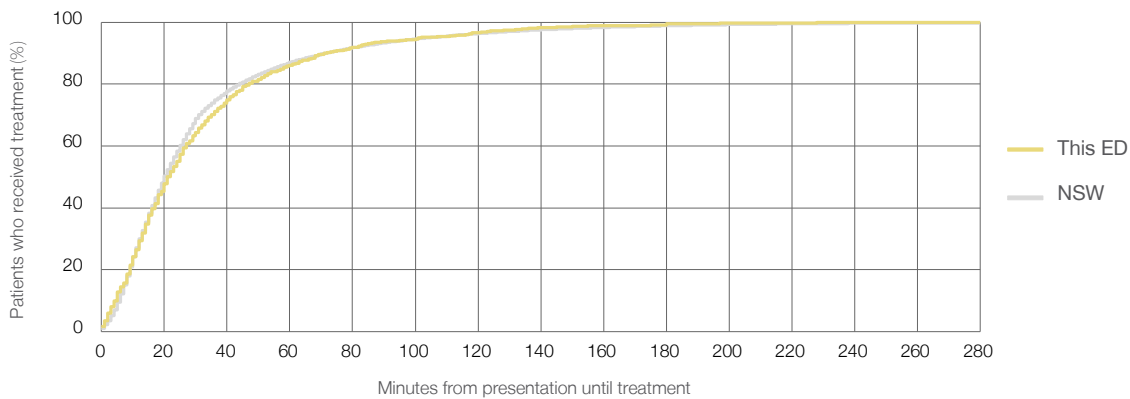
Number of triage 3 patients used to calculate waiting time:³ 1,006

Median time to start treatment⁴ 21 minutes

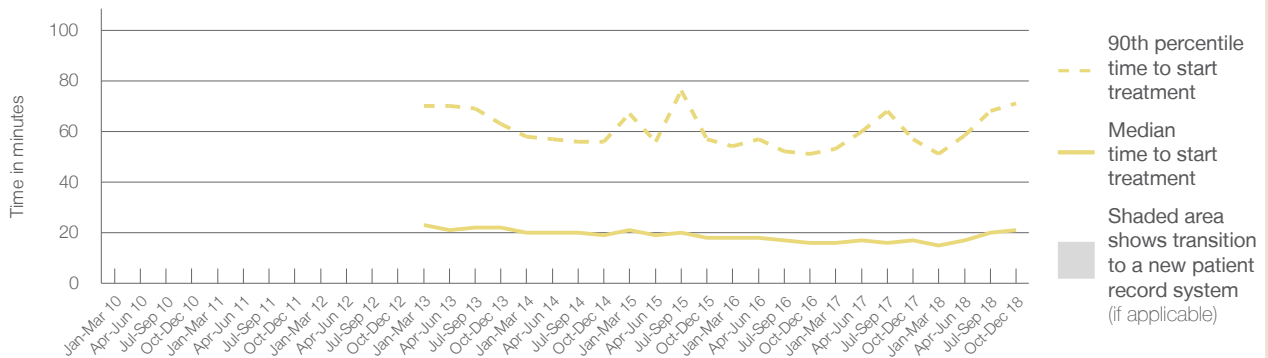
90th percentile time to start treatment⁵ 71 minutes

Same period last year	NSW (this period)
973	
941	
17 minutes	20 minutes
57 minutes	72 minutes

Percentage of triage 3 patients who received treatment by time, October to December 2018



Time patients waited to start treatment (minutes) for triage 3 patients, January 2010 to December 2018^{†‡§}



	Oct-Dec 2010	Oct-Dec 2011	Oct-Dec 2012	Oct-Dec 2013	Oct-Dec 2014	Oct-Dec 2015	Oct-Dec 2016	Oct-Dec 2017	Oct-Dec 2018
Median time to start treatment ⁴ (minutes)				22	19	18	16	17	21
90th percentile time to start treatment ⁵ (minutes)				63	56	57	51	57	71

(†) Data points are not shown in graphs for quarters when patient numbers are too small.

(‡) Caution is advised when interpreting abrupt changes over time at the hospital level. For example, performance before and after transition to a new information system is not directly comparable. For more information, see Background Paper: Approaches to reporting time measures of emergency department performance, December 2011.

(§) Quarterly information for this hospital is shown where data are available from the Health Information Exchange, NSW Health. For more information, see Background Paper: Approaches to reporting time measures of emergency department performance, December 2011.

Moruya District Hospital: Time patients waited to start treatment, triage 4 October to December 2018

Triage 4 Semi-urgent (e.g. sprained ankle, earache)

Number of triage 4 patients: 1,084

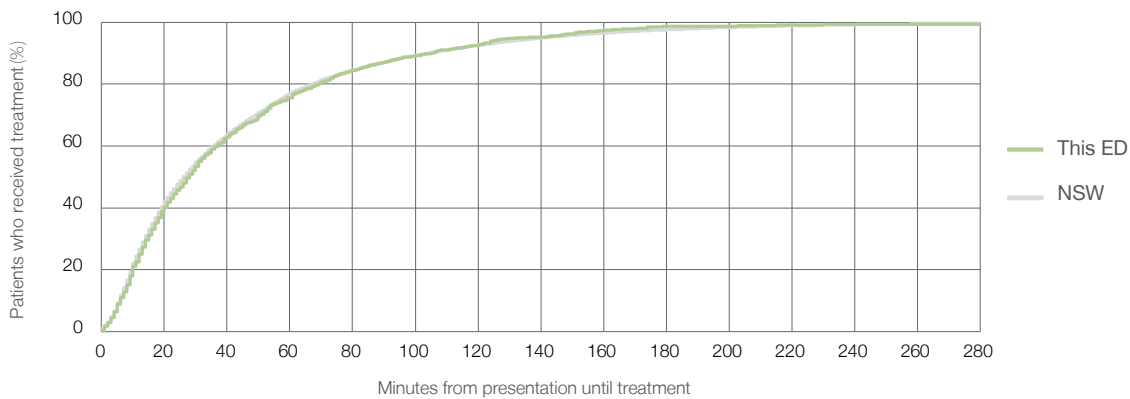
Number of triage 4 patients used to calculate waiting time:³ 922

Median time to start treatment⁴ 28 minutes

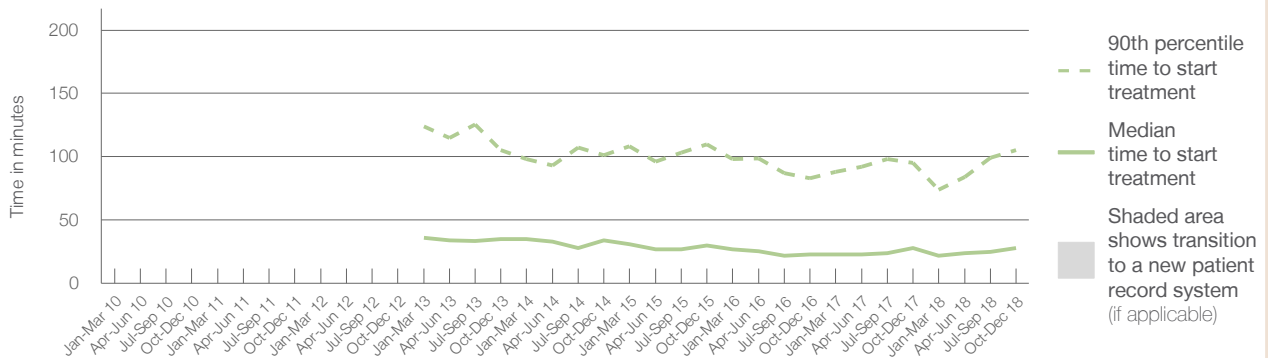
90th percentile time to start treatment⁵ 105 minutes

Same period last year	NSW (this period)
972	857
28 minutes	26 minutes
95 minutes	104 minutes

Percentage of triage 4 patients who received treatment by time, October to December 2018



Time patients waited to start treatment (minutes) for triage 4 patients, January 2010 to December 2018^{†‡§}



	Oct-Dec 2010	Oct-Dec 2011	Oct-Dec 2012	Oct-Dec 2013	Oct-Dec 2014	Oct-Dec 2015	Oct-Dec 2016	Oct-Dec 2017	Oct-Dec 2018
Median time to start treatment ⁴ (minutes)				35	34	30	23	28	28
90th percentile time to start treatment ⁵ (minutes)				105	101	110	83	95	105

(†) Data points are not shown in graphs for quarters when patient numbers are too small.

(‡) Caution is advised when interpreting abrupt changes over time at the hospital level. For example, performance before and after transition to a new information system is not directly comparable. For more information, see Background Paper: Approaches to reporting time measures of emergency department performance, December 2011.

(§) Quarterly information for this hospital is shown where data are available from the Health Information Exchange, NSW Health. For more information, see Background Paper: Approaches to reporting time measures of emergency department performance, December 2011.

Moruya District Hospital: Time patients waited to start treatment, triage 5 October to December 2018

Triage 5 Non-urgent (e.g. small cuts or abrasions)

Number of triage 5 patients: 347

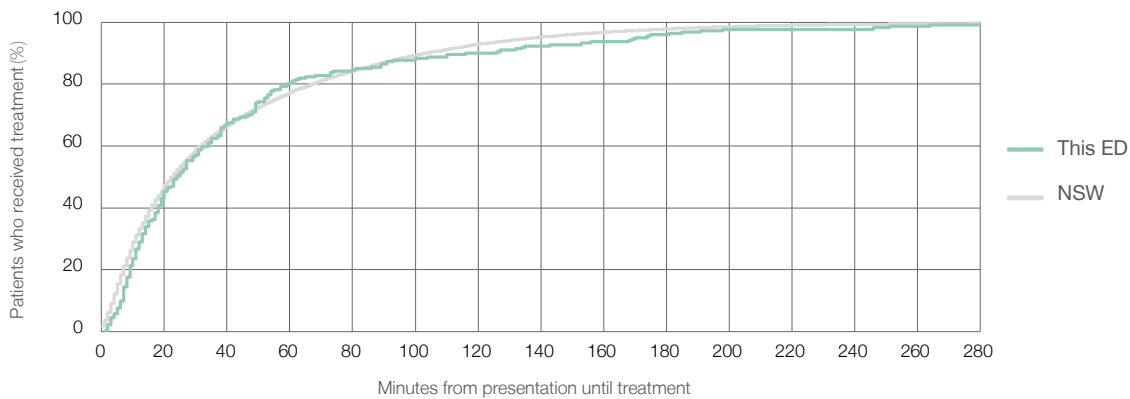
Number of triage 5 patients used to calculate waiting time:³ 221

Median time to start treatment⁴ 24 minutes

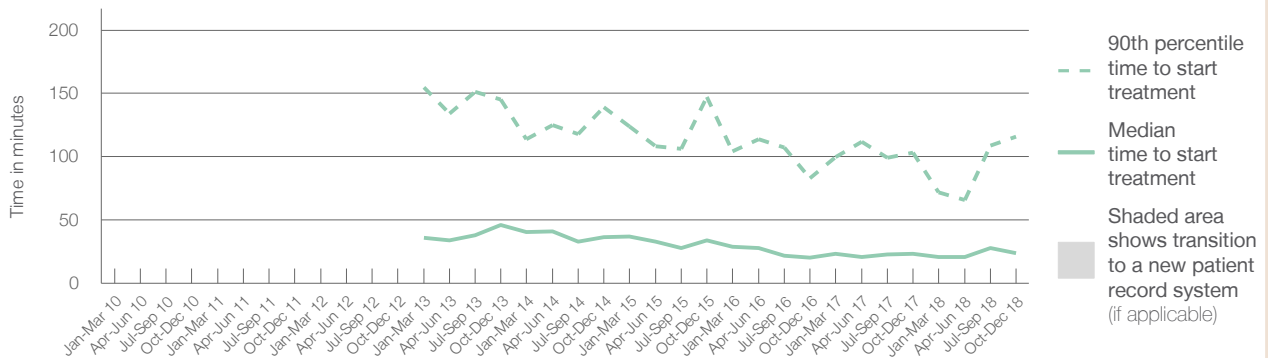
90th percentile time to start treatment⁵ 116 minutes

Same period last year	NSW (this period)
351	
262	
24 minutes	23 minutes
103 minutes	104 minutes

Percentage of triage 5 patients who received treatment by time, October to December 2018



Time patients waited to start treatment (minutes) for triage 5 patients, January 2010 to December 2018^{†‡§}



	Oct-Dec 2010	Oct-Dec 2011	Oct-Dec 2012	Oct-Dec 2013	Oct-Dec 2014	Oct-Dec 2015	Oct-Dec 2016	Oct-Dec 2017	Oct-Dec 2018
Median time to start treatment ⁴ (minutes)				46	37	34	20	24	24
90th percentile time to start treatment ⁵ (minutes)				145	139	147	83	103	116

(†) Data points are not shown in graphs for quarters when patient numbers are too small.

(‡) Caution is advised when interpreting abrupt changes over time at the hospital level. For example, performance before and after transition to a new information system is not directly comparable. For more information, see Background Paper: Approaches to reporting time measures of emergency department performance, December 2011.

(§) Quarterly information for this hospital is shown where data are available from the Health Information Exchange, NSW Health. For more information, see Background Paper: Approaches to reporting time measures of emergency department performance, December 2011.

Moruya District Hospital: Time patients spent in the ED

October to December 2018

All presentations:¹ 3,020 patients

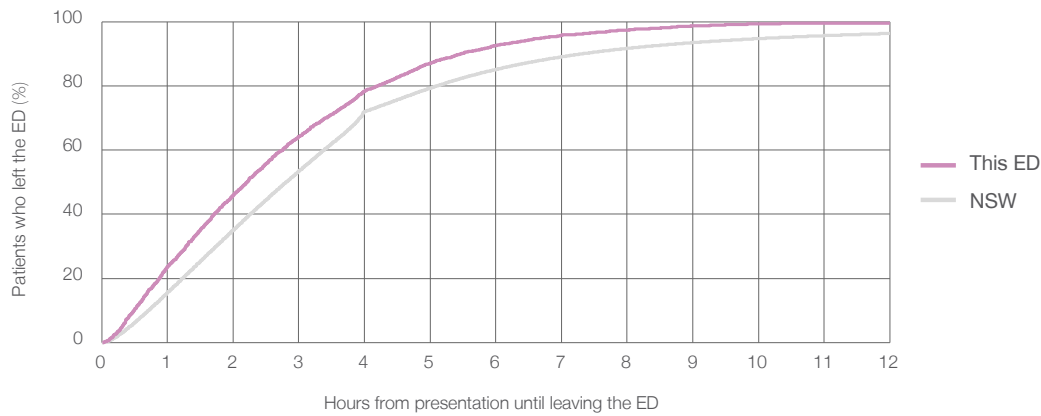
Presentations used to calculate time to leaving the ED:⁶ 3,019 patients

Median time spent in the ED⁸ 2 hours and 13 minutes

90th percentile time spent in the ED⁹ 5 hours and 29 minutes

Same period last year	NSW (this period)
2,842	2,842
2 hours and 7 minutes	2 hours and 49 minutes
5 hours and 22 minutes	7 hours and 19 minutes

Percentage of patients who left the ED by time, October to December 2018



Time patients spent in the ED, by quarter, January 2010 to December 2018^{†‡§}



	Oct-Dec 2010	Oct-Dec 2011	Oct-Dec 2012	Oct-Dec 2013	Oct-Dec 2014	Oct-Dec 2015	Oct-Dec 2016	Oct-Dec 2017	Oct-Dec 2018
Median time spent in the ED ⁸ (hours, minutes)				2h 31m	2h 30m	2h 14m	2h 0m	2h 7m	2h 13m
90th percentile time spent in the ED ⁹ (hours, minutes)				6h 40m	6h 20m	5h 56m	5h 46m	5h 22m	5h 29m

(†) Data points are not shown in graphs for quarters when patient numbers are too small.

(‡) Caution is advised when interpreting abrupt changes over time at the hospital level. For example, performance before and after transition to a new information system is not directly comparable. For more information, see Background Paper: Approaches to reporting time measures of emergency department performance, December 2011.

(§) Quarterly information for this hospital is shown where data are available from the Health Information Exchange, NSW Health. For more information, see Background Paper: Approaches to reporting time measures of emergency department performance, December 2011.

Moruya District Hospital: Time patients spent in the ED
By mode of separation
October to December 2018

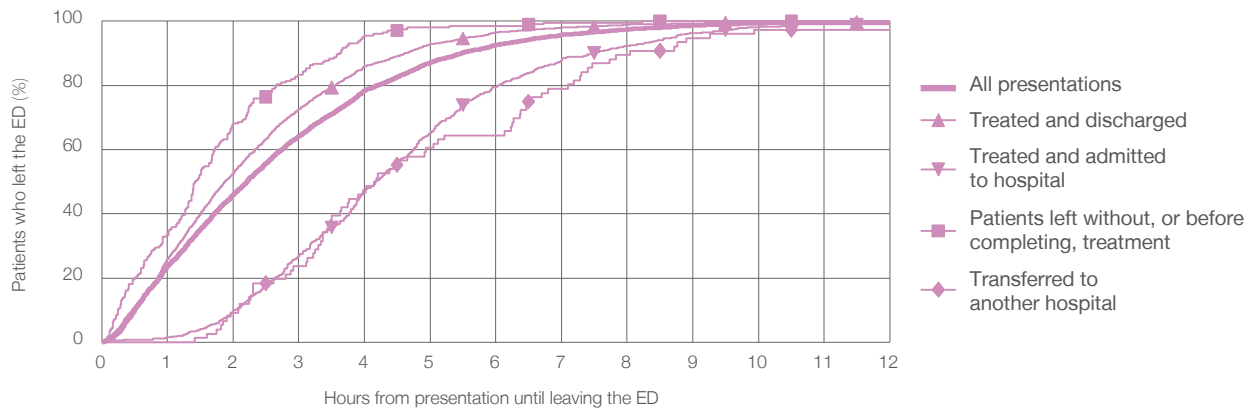
All presentations:¹ 3,020 patients

Presentations used to calculate time to leaving the ED:⁶ 3,019 patients

Treated and discharged	1,967 (65.1%)
Treated and admitted to hospital	609 (20.2%)
Patient left without, or before completing, treatment	204 (6.8%)
Transferred to another hospital	76 (2.5%)
Other	164 (5.4%)

Same period last year	Change since one year ago
2,842	6%
2,017	-2.5%
538	13.2%
114	78.9%
88	-13.6%
85	92.9%

Percentage of patients who left the ED by time and mode of separation, October to December 2018^{†‡§}



1 hour 2 hours 3 hours 4 hours 6 hours 8 hours 10 hours 12 hours

	1 hour	2 hours	3 hours	4 hours	6 hours	8 hours	10 hours	12 hours
Treated and discharged	26.0%	52.6%	72.5%	86.0%	96.4%	98.9%	99.6%	99.7%
Treated and admitted to hospital	1.5%	9.9%	26.9%	46.6%	79.6%	92.3%	98.2%	99.0%
Patient left without, or before completing, treatment	33.3%	68.1%	83.3%	95.6%	98.5%	99.5%	100%	100%
Transferred to another hospital	0%	9.2%	23.7%	47.4%	64.5%	89.5%	97.4%	97.4%
All presentations	23.7%	46.0%	64.2%	78.4%	92.6%	97.4%	99.3%	99.6%

(†) Data points are not shown in graphs for quarters when patient numbers are too small.

(‡) Caution is advised when interpreting abrupt changes over time at the hospital level. For example, performance before and after transition to a new information system is not directly comparable. For more information, see Background Paper: Approaches to reporting time measures of emergency department performance, December 2011.

(§) Quarterly information for this hospital is shown where data are available from the Health Information Exchange, NSW Health. For more information, see Background Paper: Approaches to reporting time measures of emergency department performance, December 2011.

Moruya District Hospital: Time spent in the ED
 Percentage of patients who spent four hours or less in the ED
 October to December 2018

All presentations at the emergency department: ¹ 3,020 patients

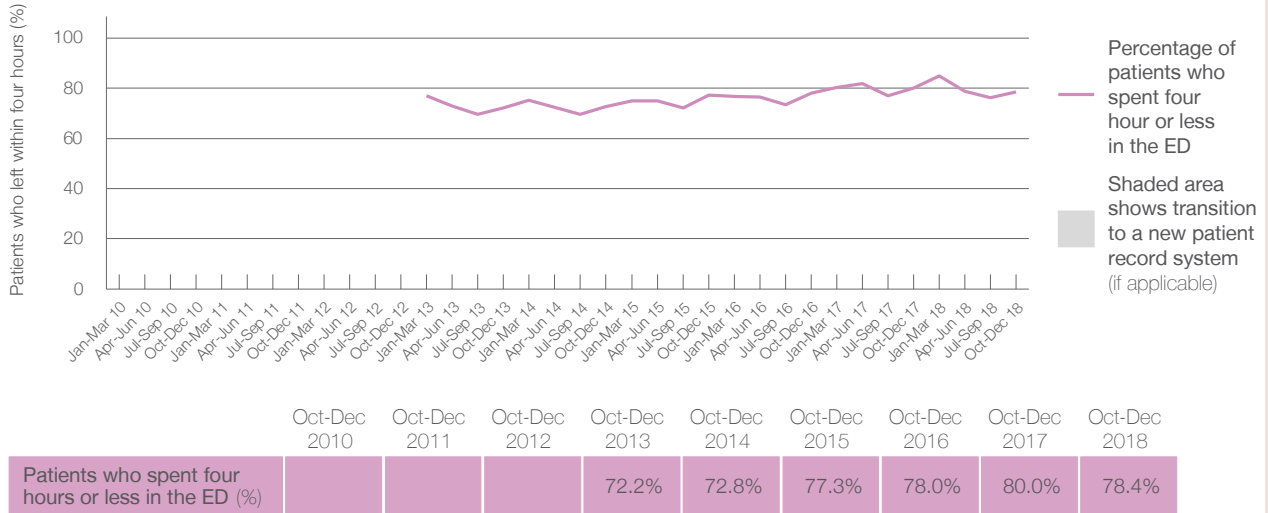
Presentations used to calculate time to leaving the ED: ⁶ 3,019 patients

Percentage of patients who spent four hours or less in the ED



	Same period last year	Change since one year ago
All presentations at the emergency department: ¹ 3,020 patients	2,842	6%
Presentations used to calculate time to leaving the ED: ⁶ 3,019 patients	2,842	6%
Percentage of patients who spent four hours or less in the ED	80.0%	

Percentage of patients who spent four hours or less in the ED, by quarter, January 2010 to December 2018 ^{†‡§}



* Suppressed due to small numbers and to protect privacy. Relevant graphs are also suppressed.
 † Data points are not shown in graphs for quarters when patient numbers were too small.
 ‡ Caution is advised when interpreting abrupt changes over time at the hospital level. For example, performance before and after transition to a new information system is not directly comparable. For more information see *Background Paper: Approaches to reporting time measures of emergency department performance, December 2011*.
 § Quarterly information for this hospital is shown where data are available from the Health Information Exchange, NSW Health. For more information, see *Background Paper: Approaches to reporting time measures of emergency department performance, December 2011*.

- All emergency and non-emergency presentations at the emergency department (ED).
- All presentations that have a triage category and are coded as emergency presentations or unplanned return visits.
- Some patients are excluded from ED time measures due to calculation requirements. For details, see the *Technical Supplement: Emergency department measures, October to December 2018*.
- The median is the time by which half of patients started treatment. The other half of patients took equal to or longer than this time.
- The 90th percentile is the time by which 90% of patients started treatment. The final 10% of patients took equal to or longer than this time.
- All presentations that have a departure time.
- Transfer of care time refers to the period between arrival of patients at the ED by ambulance and the transfer of responsibility for their care from paramedics to ED staff in an ED treatment zone. For more information see *Spotlight on Measurement: measuring transfer of care from the ambulance to the emergency department*.
- The median is the time by which half of patients left the ED. The other half of patients took equal to or longer than this time.
- The 90th percentile is the time by which 90% of patients left the ED. The final 10% of patients took equal to or longer than this time.

Note: Presentation time is the earlier of times recorded for the start of clerical registration or the triage process.
 Treatment time is the earliest time recorded when a healthcare professional provides medical care that is relevant to the patient's presenting problems. For patients who were treated and discharged, departure time is the time when treatment was completed. For all other patients, departure time is the time when the patient actually left the ED.

Note: All percentages are rounded and therefore percentages may not add to 100%.

Sources: ED data from Health Information Exchange, NSW Health (extracted 22 January 2019).
 Transfer of care data from Transfer of Care Reporting System (extracted 22 January 2019).