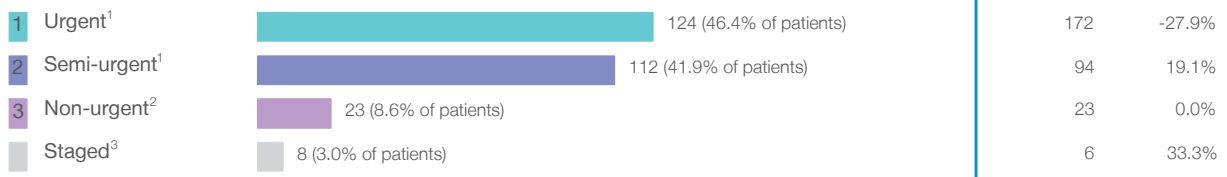


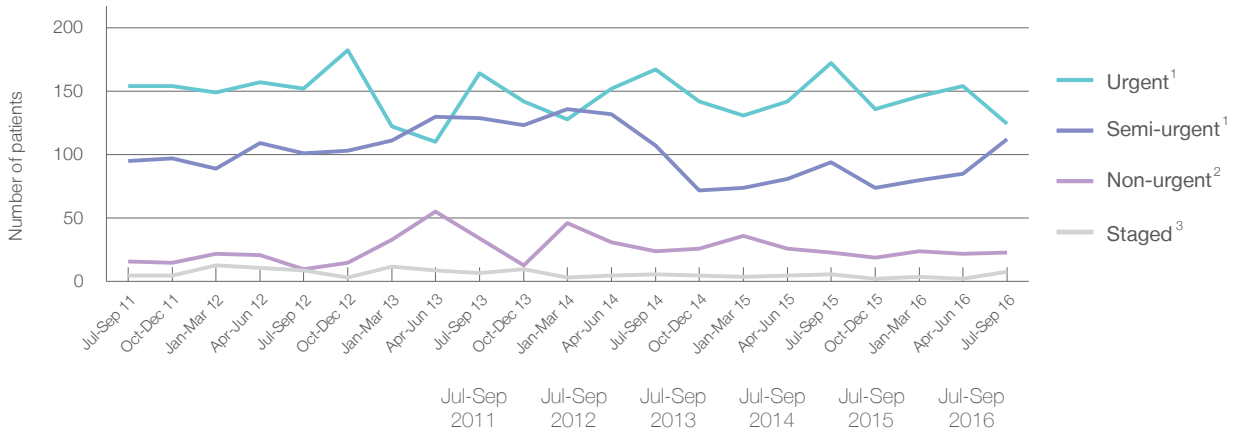
Calvary Mater Newcastle: Elective surgery performed

July to September 2016

Patients who received elective surgery by urgency category: 267 patients



Patients who received elective surgery by urgency category by quarter, July 2011 to September 2016



Urgency Category	Jul-Sep 2011	Jul-Sep 2012	Jul-Sep 2013	Jul-Sep 2014	Jul-Sep 2015	Jul-Sep 2016
All categories	270	272	334	304	295	267
Urgent ¹	154	152	164	167	172	124
Semi-urgent ¹	95	101	129	107	94	112
Non-urgent ²	16	10	34	24	23	23
Staged ³	5	9	7	6	6	8

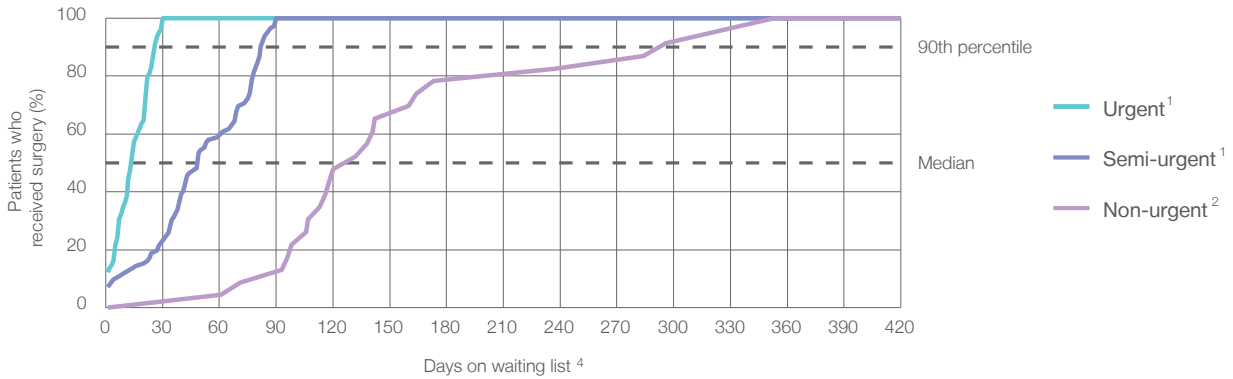
Calvary Mater Newcastle: Time waited to receive elective surgery

July to September 2016

Percentage of patients who received surgery within the clinically recommended timeframe

	Recommended: (days)	100%	Same period last year	Peer group (this period)
1 Urgent ¹	30 days	100%	100%	100%
2 Semi-urgent ¹	90 days	100%	100%	100%
3 Non-urgent ²	365 days	100%	100%	100%

Percentage of patients who received elective surgery by waiting time (days)




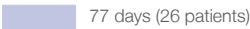
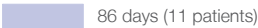

Waiting time (days) for people who received surgery by urgency category

	Peer group (this period)	This hospital (same period last year)	Peer group (same period last year)
1 Urgent: ¹ 124 patients			
Median time to receive surgery	14 days	10	13
90th percentile time to receive surgery	26 days	25	27
2 Semi-urgent: ¹ 112 patients			
Median time to receive surgery	49 days	48	43
90th percentile time to receive surgery	82 days	81	*
3 Non-urgent: ² 23 patients			
Median time to receive surgery	132 days	276	111
90th percentile time to receive surgery	*	352	* 347

Calvary Mater Newcastle: Time waited to receive elective surgery

July to September 2016

Median ⁵ waiting time (days) for patients who received elective surgery by specialty of surgeon		Same period last year	Peer group (this period)
Cardiothoracic surgery	* (< 5 patients)	*	*
Ear, nose and throat surgery	n/a (0 patients)	n/a	327
General surgery	 26 days (242 patients)	19	26
Gynaecology	* (6 patients)	53	25
Medical	* (7 patients)	*	*
Neurosurgery	n/a (0 patients)	n/a	n/a
Ophthalmology	n/a (0 patients)	n/a	134
Orthopaedic surgery	n/a (0 patients)	n/a	62
Plastic surgery	* (8 patients)	*	*
Urology	n/a (0 patients)	n/a	n/a
Vascular surgery	n/a (0 patients)	n/a	n/a

Median ⁵ waiting time (days) for patients who received elective surgery by common procedures ⁷		Same period last year	Peer group (this period)
Abdominal hysterectomy	* (< 5 patients)	n/a	18
Cataract extraction	n/a (0 patients)	n/a	278
Cholecystectomy	 77 days (26 patients)	63	77
Coronary artery bypass graft	n/a (0 patients)	n/a	n/a
Cystoscopy	n/a (0 patients)	n/a	*
Haemorrhoidectomy	* (< 5 patients)	*	*
Hysteroscopy	n/a (0 patients)	n/a	41
Inguinal herniorrhaphy	 86 days (11 patients)	71	86
Myringoplasty / Tympanoplasty	n/a (0 patients)	n/a	*
Myringotomy	n/a (0 patients)	n/a	n/a
Other - General	 22 days (25 patients)	20	22
Prostatectomy	n/a (0 patients)	n/a	n/a
Septoplasty	n/a (0 patients)	n/a	346
Tonsillectomy	n/a (0 patients)	n/a	302
Total hip replacement	n/a (0 patients)	n/a	n/a
Total knee replacement	n/a (0 patients)	n/a	n/a
Varicose veins stripping and ligation	n/a (0 patients)	n/a	n/a

Calvary Mater Newcastle: Elective surgery waiting list

July to September 2016

Patients ready for surgery on waiting list at start of quarter: 140 patients

Patients ready for surgery on waiting list at end of quarter: 125 patients

Patients not ready for surgery⁸ on waiting list at end of quarter: 41 patients

	Same period last year	Change since one year ago
Patients ready for surgery on waiting list at start of quarter	139	0.7%
Patients ready for surgery on waiting list at end of quarter	109	14.7%
Patients not ready for surgery ⁸ on waiting list at end of quarter	35	17.1%

Calvary Mater Newcastle: Patients ready for elective surgery

as at 30th September 2016

Patients ready for surgery on waiting list by urgency category: 125 patients



	Same period last year	Change since one year ago
Urgent ¹	19	10.5%
Semi-urgent ¹	43	34.9%
Non-urgent ²	47	-2.1%

Calvary Mater Newcastle: Patients ready for elective surgery as at 30th September 2016

Patients ready for elective surgery by specialty of surgeon: 125 patients

	As at 30 Sep 2016	Same time last year	Change since one year ago
All specialties	125	109	14.7%
Cardiothoracic surgery	< 5	< 5	*
Ear, nose and throat surgery	0	0	n/a
General surgery	115	91	26.4%
Gynaecology	0	< 5	*
Medical	< 5	0	n/a
Neurosurgery	0	0	n/a
Ophthalmology	0	0	n/a
Orthopaedic surgery	0	0	n/a
Plastic surgery	8	12	-33.3%
Urology	0	0	n/a
Vascular surgery	0	0	n/a

Patients ready for elective surgery for common procedures⁷

	As at 30 Sep 2016	Same time last year	Change since one year ago
Abdominal hysterectomy	0	< 5	n/a
Cataract extraction	0	< 5	n/a
Cholecystectomy	27	19	42.1%
Coronary artery bypass graft	0	< 5	n/a
Cystoscopy	0	< 5	n/a
Haemorrhoidectomy	< 5	< 5	*
Hysteroscopy	0	< 5	n/a
Inguinal herniorrhaphy	16	18	-11.1%
Myringoplasty / Tympanoplasty	0	< 5	n/a
Myringotomy	0	< 5	n/a
Other - General	10	5	100.0%
Prostatectomy	0	< 5	n/a
Septoplasty	0	< 5	n/a
Tonsillectomy	0	< 5	n/a
Total hip replacement	0	< 5	n/a
Total knee replacement	0	< 5	n/a
Varicose veins stripping and ligation	0	< 5	n/a

Calvary Mater Newcastle: Patients ready for elective surgery as at 30th September 2016

Patients ready for elective surgery, on the waiting list for longer than 12 months

As at 30 Sep 2016 Same time last year

	As at 30 Sep 2016	Same time last year
All specialties	0	0

- * Suppressed due to small numbers and to protect privacy. Relevant graphs are also suppressed.
- < 5 Less than five patients. For measures by urgency category, counts are included in an adjacent category. Relevant graphs are also suppressed.
1. Excluding staged procedures.
 2. Excluding staged procedures and cystoscopy.
 3. Including non-urgent cystoscopy.
 4. Excludes the total number of days the patient was coded as 'not ready for surgery'.
 5. This is the number of days it took for half of patients who received elective surgery during the period to be admitted and receive their surgery. The other half took equal to or longer than the median to be admitted for surgery.
 6. This is the number of days it took for 90% of patients who received elective surgery during the period to be admitted and receive their surgery. The final 10% of patients took equal to or longer than the 90th percentile.
 7. The procedures included in this list are procedures which are high volume; some may be associated with long waiting periods. For a description of these procedures see *Elective Surgery Glossary of Common Procedures, December 2012*.
 8. Includes staged procedures, non-urgent cystoscopy, and patients currently not available for personal reasons.
- For more information: For details of methods, see the *Technical Supplement: Elective surgery measures, July to September 2016*.
- Note:** All percentages rounded to whole numbers and therefore percentages may not add to 100%.
- Source:** Waiting List Collection On-Line System, NSW Health (extracted 17 October 2016.).