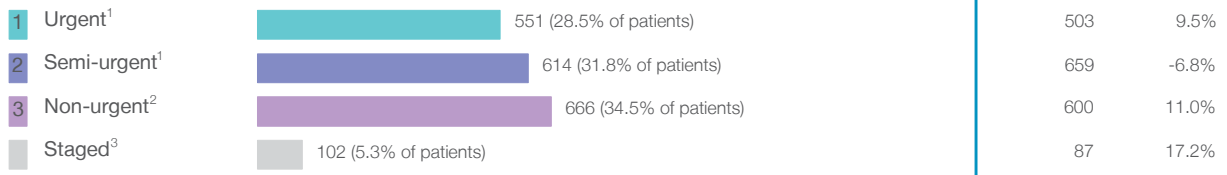


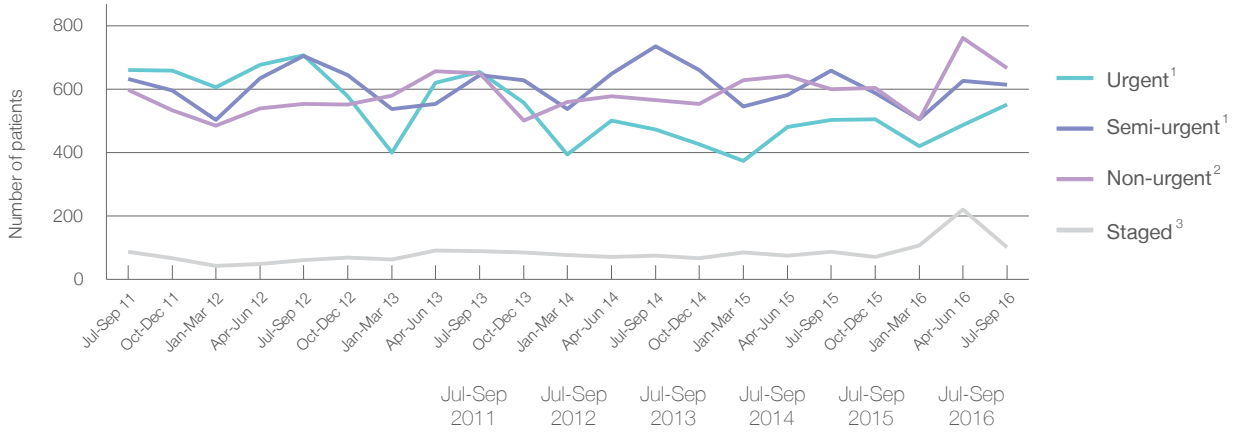
Liverpool Hospital: Elective surgery performed

July to September 2016

Patients who received elective surgery by urgency category: 1,933 patients



Patients who received elective surgery by urgency category by quarter, July 2011 to September 2016



Urgency Category	Jul-Sep 2011	Jul-Sep 2012	Jul-Sep 2013	Jul-Sep 2014	Jul-Sep 2015	Jul-Sep 2016
All categories	1,978	2,026	2,038	1,849	1,849	1,933
Urgent ¹	661	706	654	472	503	551
Semi-urgent ¹	632	705	644	735	659	614
Non-urgent ²	597	553	650	566	600	666
Staged ³	88	62	90	76	87	102

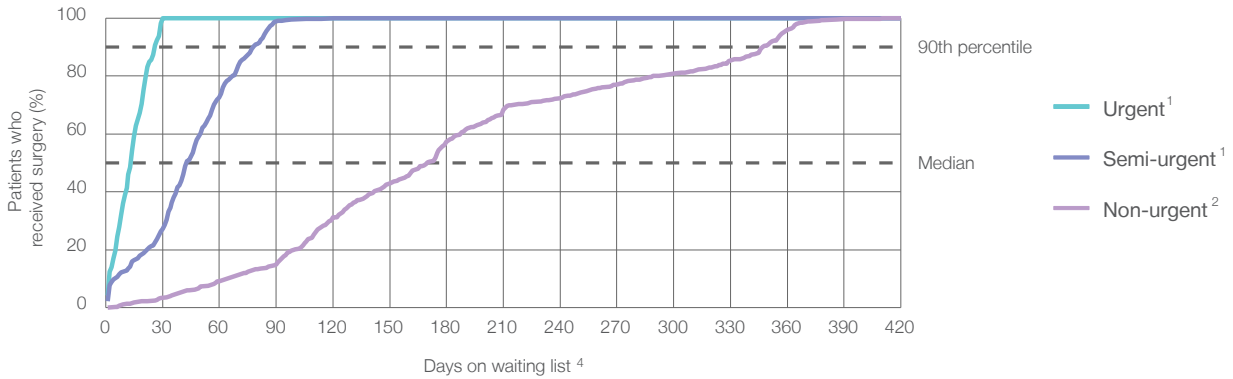
Liverpool Hospital: Time waited to receive elective surgery

July to September 2016

Percentage of patients who received surgery within the clinically recommended timeframe

Urgency Category	Recommended Timeframe	Percentage	Same period last year	Peer group (this period)
1 Urgent ¹	Recommended: 30 days	100%	100%	99.7%
2 Semi-urgent ¹	Recommended: 90 days	98.7%	98.8%	96.6%
3 Non-urgent ²	Recommended: 365 days	97.9%	98.7%	96.2%

Percentage of patients who received elective surgery by waiting time (days)



Waiting time (days) for people who received surgery by urgency category

Urgency Category	Median time to receive surgery	90th percentile time to receive surgery	Peer group (this period)	This hospital (same period last year)	Peer group (same period last year)
1 Urgent: ¹ 551 patients	14 days	26 days	9	14	9
2 Semi-urgent: ¹ 614 patients	43 days	78 days	41	48	42
3 Non-urgent: ² 666 patients	170 days	348 days	167	162	162

Liverpool Hospital: Time waited to receive elective surgery

July to September 2016

Median⁵ waiting time (days) for patients who received elective surgery by specialty of surgeon

Specialty	Median ⁵ waiting time (days) (patients)	Same period last year	Peer group (this period)
Cardiothoracic surgery	26 days (92 patients)	34	20
Ear, nose and throat surgery	140 days (126 patients)	111	105
General surgery	33 days (470 patients)	36	27
Gynaecology	49 days (310 patients)	44	30
Medical	* (< 5 patients)	*	17
Neurosurgery	86 days (144 patients)	89	43
Ophthalmology	162 days (253 patients)	142	100
Orthopaedic surgery	16 days (74 patients)	23	71
Plastic surgery	29 days (109 patients)	29	20
Urology	42 days (184 patients)	41	31
Vascular surgery	16 days (169 patients)	15	15

Median⁵ waiting time (days) for patients who received elective surgery by common procedures⁷

Procedure	Median ⁵ waiting time (days) (patients)	Same period last year	Peer group (this period)
Abdominal hysterectomy	50 days (49 patients)	70	54
Cataract extraction	166 days (221 patients)	148	126
Cholecystectomy	61 days (48 patients)	56	48
Coronary artery bypass graft	33 days (31 patients)	48	26
Cystoscopy	41 days (69 patients)	25	29
Haemorrhoidectomy	* (5 patients)	64	64
Hysteroscopy	35 days (100 patients)	27	34
Inguinal herniorrhaphy	91 days (41 patients)	50	71
Myringoplasty / Tympanoplasty	348 days (14 patients)	*	327
Myringotomy	* (< 5 patients)	*	67
Other - General	18 days (70 patients)	22	20
Prostatectomy	44 days (25 patients)	42	54
Septoplasty	* (< 5 patients)	*	326
Tonsillectomy	155 days (30 patients)	209	314
Total hip replacement	* (< 5 patients)	*	113
Total knee replacement	* (< 5 patients)	*	272
Varicose veins stripping and ligation	n/a (0 patients)	n/a	75

Liverpool Hospital: Elective surgery waiting list

July to September 2016

Patients ready for surgery on waiting list at start of quarter: 2,007 patients

Patients ready for surgery on waiting list at end of quarter: 2,130 patients

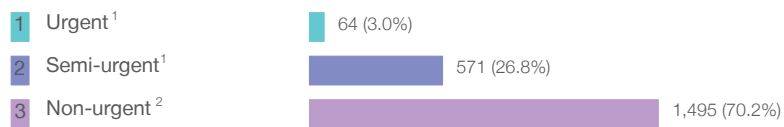
Patients not ready for surgery⁸ on waiting list at end of quarter: 617 patients

	Same period last year	Change since one year ago
Patients ready for surgery on waiting list at start of quarter	1,867	7.5%
Patients ready for surgery on waiting list at end of quarter	1,837	15.9%
Patients not ready for surgery ⁸ on waiting list at end of quarter	495	24.6%

Liverpool Hospital: Patients ready for elective surgery

as at 30th September 2016

Patients ready for surgery on waiting list by urgency category: 2,130 patients



	Same period last year	Change since one year ago
Urgent ¹	108	-40.7%
Semi-urgent ¹	426	34.0%
Non-urgent ²	1,303	14.7%

Liverpool Hospital: Patients ready for elective surgery as at 30th September 2016

Patients ready for elective surgery by specialty of surgeon: 2,130 patients

	As at 30 Sep 2016	Same time last year	Change since one year ago
All specialties	2,130	1,837	15.9%
Cardiothoracic surgery	40	62	-35.5%
Ear, nose and throat surgery	365	347	5.2%
General surgery	596	461	29.3%
Gynaecology	252	204	23.5%
Medical	< 5	< 5	*
Neurosurgery	142	191	-25.7%
Ophthalmology	404	308	31.2%
Orthopaedic surgery	34	29	17.2%
Plastic surgery	54	86	-37.2%
Urology	150	96	56.3%
Vascular surgery	90	51	76.5%

Patients ready for elective surgery for common procedures⁷

	As at 30 Sep 2016	Same time last year	Change since one year ago
Abdominal hysterectomy	40	22	81.8%
Cataract extraction	335	259	29.3%
Cholecystectomy	100	71	40.8%
Coronary artery bypass graft	17	24	-29.2%
Cystoscopy	21	11	90.9%
Haemorrhoidectomy	19	8	137.5%
Hysteroscopy	79	66	19.7%
Inguinal herniorrhaphy	65	58	12.1%
Myringoplasty / Tympanoplasty	29	26	11.5%
Myringotomy	< 5	11	*
Other - General	49	41	19.5%
Prostatectomy	26	8	225.0%
Septoplasty	36	33	9.1%
Tonsillectomy	142	128	10.9%
Total hip replacement	< 5	< 5	*
Total knee replacement	< 5	< 5	*
Varicose veins stripping and ligation	0	< 5	n/a

Liverpool Hospital: Patients ready for elective surgery
as at 30th September 2016

Patients ready for elective surgery, on the waiting list for longer than 12 months

As at 30 Sep 2016 Same time last year

	As at 30 Sep 2016	Same time last year
All specialties	< 5	< 5

* Suppressed due to small numbers and to protect privacy. Relevant graphs are also suppressed.

< 5 Less than five patients. For measures by urgency category, counts are included in an adjacent category. Relevant graphs are also suppressed.

1. Excluding staged procedures.
2. Excluding staged procedures and cystoscopy.
3. Including non-urgent cystoscopy.
4. Excludes the total number of days the patient was coded as 'not ready for surgery'.
5. This is the number of days it took for half of patients who received elective surgery during the period to be admitted and receive their surgery. The other half took equal to or longer than the median to be admitted for surgery.
6. This is the number of days it took for 90% of patients who received elective surgery during the period to be admitted and receive their surgery. The final 10% of patients took equal to or longer than the 90th percentile.
7. The procedures included in this list are procedures which are high volume; some may be associated with long waiting periods. For a description of these procedures see *Elective Surgery Glossary of Common Procedures, December 2012*.
8. Includes staged procedures, non-urgent cystoscopy, and patients currently not available for personal reasons.

For more information: For details of methods, see the *Technical Supplement: Elective surgery measures, July to September 2016*.

Note: All percentages rounded to whole numbers and therefore percentages may not add to 100%.

Source: Waiting List Collection On-Line System, NSW Health (extracted 17 October 2016.).