

Moruya District Hospital: Emergency department (ED) overview

October to December 2017

All presentations:¹ 2,842 patients

Emergency presentations:² 2,643 patients

Same period last year	Change since one year ago
2,787	2.0%
2,579	2.5%

Moruya District Hospital: Time patients waited to start treatment³

October to December 2017

Triage 2 Emergency (e.g. chest pain, severe burns): 325 patients

Median time to start treatment⁴ 8 minutes
 90th percentile time to start treatment⁵ 34 minutes

Triage 3 Urgent (e.g. moderate blood loss, dehydration): 973 patients

Median time to start treatment⁴ 17 minutes
 90th percentile time to start treatment⁵ 57 minutes

Triage 4 Semi-urgent (e.g. sprained ankle, earache): 972 patients

Median time to start treatment⁴ 28 minutes
 90th percentile time to start treatment⁵ 95 minutes

Triage 5 Non-urgent (e.g. small cuts or abrasions): 351 patients

Median time to start treatment⁴ 24 minutes
 90th percentile time to start treatment⁵ 103 minutes

Same period last year	NSW (this period)
308	
7 minutes	8 minutes
28 minutes	23 minutes
823	
16 minutes	20 minutes
51 minutes	65 minutes
1,053	
23 minutes	26 minutes
83 minutes	99 minutes
380	
20 minutes	23 minutes
83 minutes	103 minutes

Moruya District Hospital: Time from presentation until leaving the ED

October to December 2017

Attendances used to calculate time to leaving the ED:⁶ 2,842 patients

Percentage of patients who spent four hours or less in the ED 80.0%

Same period last year	Change since one year ago
2,787	2.0%
78.0%	

* Suppressed due to small number of patients and to protect privacy. Relevant graphs are also suppressed.

- All emergency and non-emergency attendances at the emergency department (ED).
- All attendances that have a triage category and are coded as emergency presentations or unplanned return visits.
- Some patients are excluded from ED time measures due to calculation requirements. For details, see the *Technical Supplement: Emergency department measures, July to September 2016*.
- The median is the time by which half of patients started treatment. The other half of patients waited equal to or longer than this time.
- The 90th percentile is the time by which 90% of patients started treatment. The final 10% of patients waited equal to or longer than this time.
- All presentations that have a departure time.

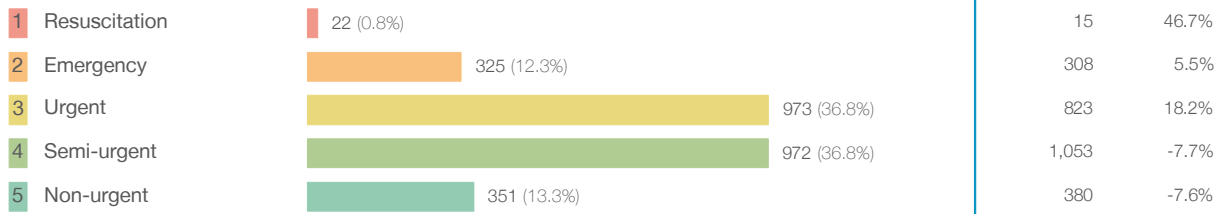
Note: Presentation time is the earlier time recorded for clerical registration or the triage process. Treatment time is the earliest time recorded when a healthcare professional provides medical care relevant to the patient's presenting problems.

Source: Health Information Exchange, NSW Health (extracted 23 January 2018).

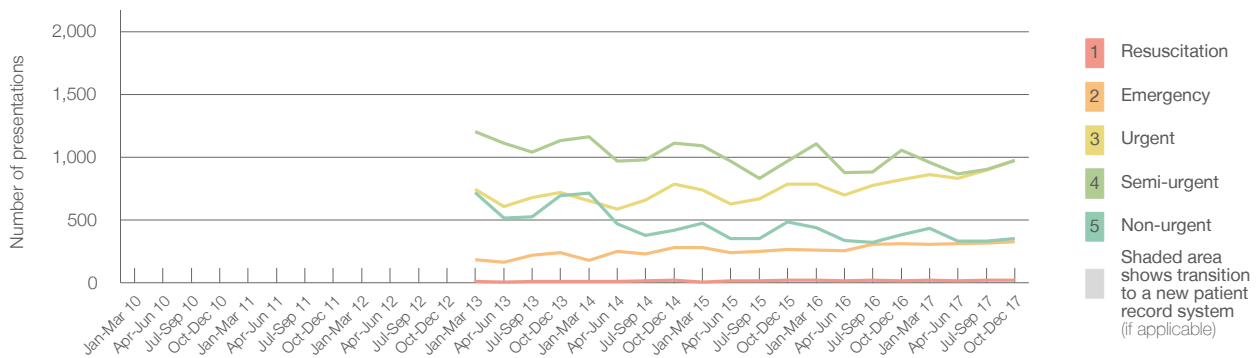
Moruya District Hospital: Patients presenting to the emergency department October to December 2017

All presentations:¹ 2,842 patients

Emergency presentations² by triage category: 2,643 patients



Emergency presentations² by quarter, January 2010 to December 2017 [†] [‡] [§]



	Oct-Dec 2010	Oct-Dec 2011	Oct-Dec 2012	Oct-Dec 2013	Oct-Dec 2014	Oct-Dec 2015	Oct-Dec 2016	Oct-Dec 2017
Resuscitation				12	18	19	15	22
Emergency				239	281	264	308	325
Urgent				721	785	783	823	973
Semi-urgent				1,134	1,110	970	1,053	972
Non-urgent				693	420	485	380	351
All emergency presentations				2,799	2,614	2,521	2,579	2,643

Moruya District Hospital: Patients arriving by ambulance October to December 2017

Arrivals used to calculate transfer of care time:⁷ 573 patients

ED Transfer of care time



- (†) Data points are not shown in graphs for quarters when patient numbers are too small.
- (‡) Caution is advised when interpreting abrupt changes over time at the hospital level. For example, performance before and after transition to a new information system is not directly comparable. For more information, see Background Paper: Approaches to reporting time measures of emergency department performance, December 2011.
- (§) Quarterly information for this hospital is shown where data are available from the Health Information Exchange, NSW Health. For more information, see Background Paper: Approaches to reporting time measures of emergency department performance, December 2011.

Moruya District Hospital: Time patients waited to start treatment, triage 2 October to December 2017

Triage 2 Emergency (e.g. chest pain, severe burns)

Number of triage 2 patients: 325

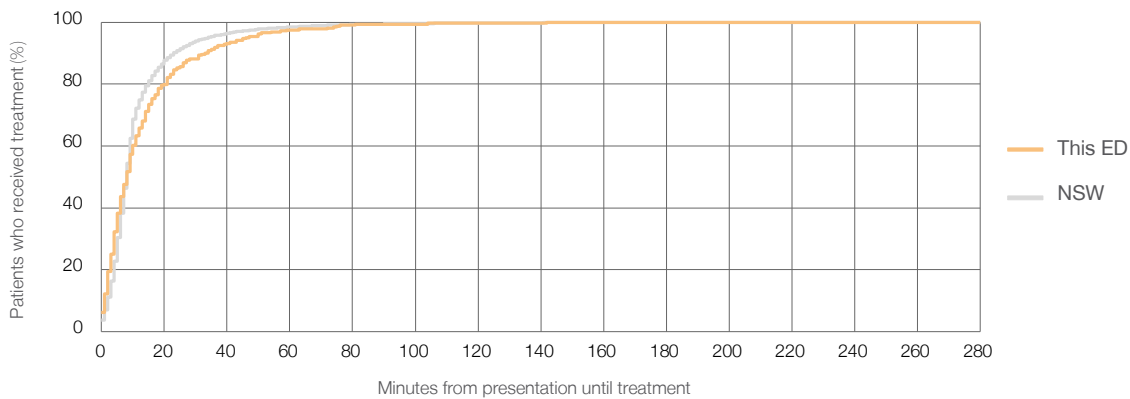
Number of triage 2 patients used to calculate waiting time:³ 319

Median time to start treatment⁴ 8 minutes

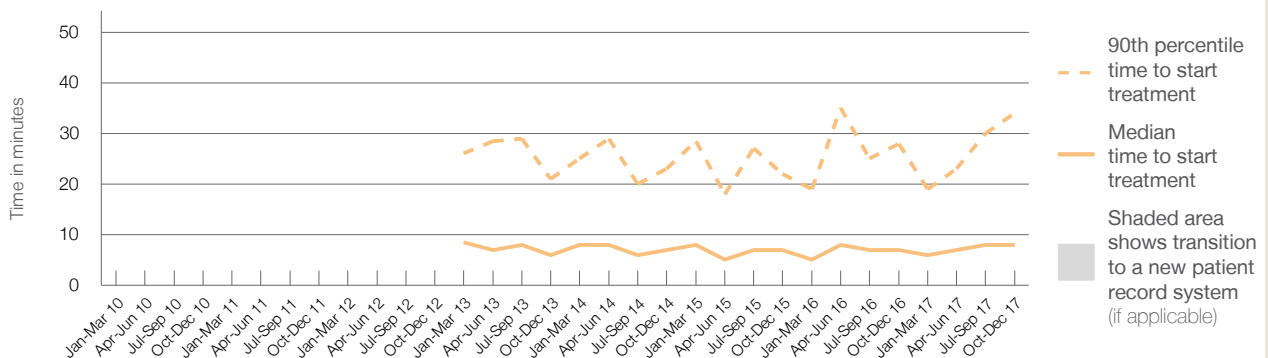
90th percentile time to start treatment⁵ 34 minutes

Same period last year	NSW (this period)
308	
307	
7 minutes	8 minutes
28 minutes	23 minutes

Percentage of triage 2 patients who received treatment by time, October to December 2017



Time patients waited to start treatment (minutes) for triage 2 patients, January 2010 to December 2017^{†‡§}



	Oct-Dec 2010	Oct-Dec 2011	Oct-Dec 2012	Oct-Dec 2013	Oct-Dec 2014	Oct-Dec 2015	Oct-Dec 2016	Oct-Dec 2017
Median time to start treatment ⁴ (minutes)				6	7	7	7	8
90th percentile time to start treatment ⁵ (minutes)				21	23	22	28	34

(†) Data points are not shown in graphs for quarters when patient numbers are too small.

(‡) Caution is advised when interpreting abrupt changes over time at the hospital level. For example, performance before and after transition to a new information system is not directly comparable. For more information, see Background Paper: Approaches to reporting time measures of emergency department performance, December 2011.

(§) Quarterly information for this hospital is shown where data are available from the Health Information Exchange, NSW Health. For more information, see Background Paper: Approaches to reporting time measures of emergency department performance, December 2011.

Moruya District Hospital: Time patients waited to start treatment, triage 3 October to December 2017

Triage 3 Urgent (e.g. moderate blood loss, dehydration)

Number of triage 3 patients: 973

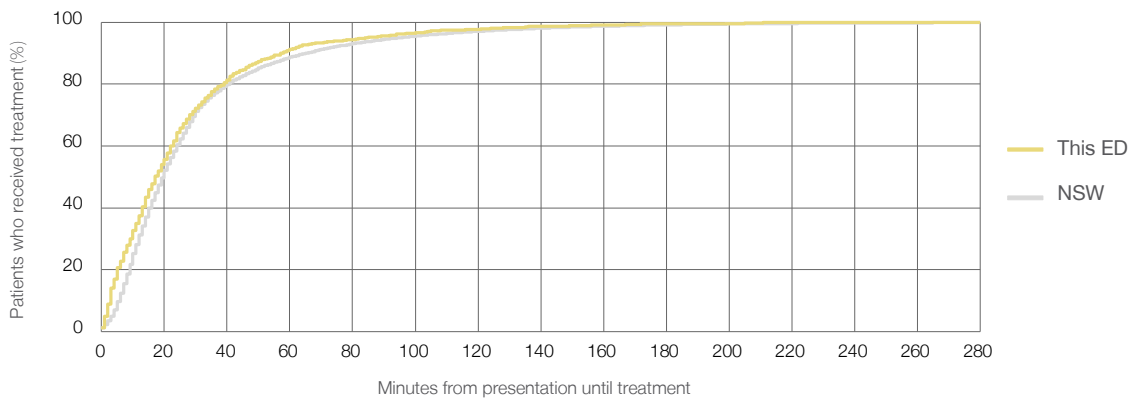
Number of triage 3 patients used to calculate waiting time:³ 941

Median time to start treatment⁴ 17 minutes

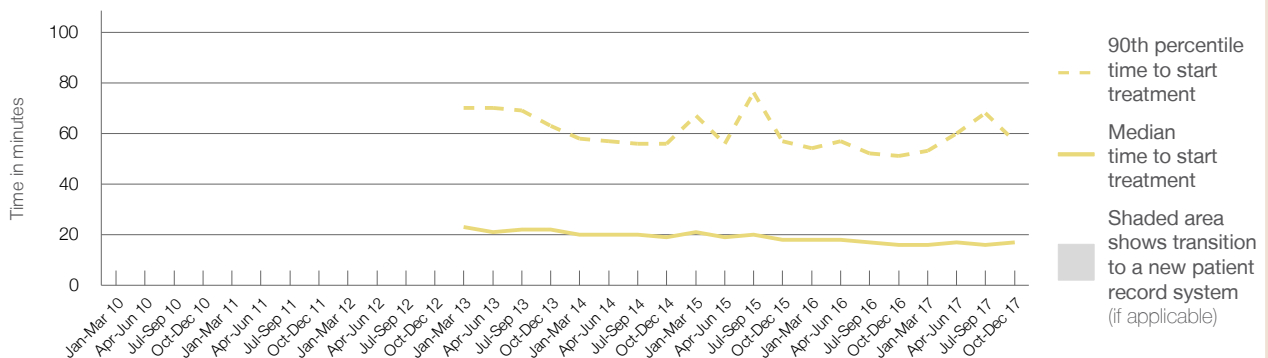
90th percentile time to start treatment⁵ 57 minutes

Same period last year	NSW (this period)
823	
807	
16 minutes	20 minutes
51 minutes	65 minutes

Percentage of triage 3 patients who received treatment by time, October to December 2017



Time patients waited to start treatment (minutes) for triage 3 patients, January 2010 to December 2017^{†‡§}



	Oct-Dec 2010	Oct-Dec 2011	Oct-Dec 2012	Oct-Dec 2013	Oct-Dec 2014	Oct-Dec 2015	Oct-Dec 2016	Oct-Dec 2017
Median time to start treatment ⁴ (minutes)				22	19	18	16	17
90th percentile time to start treatment ⁵ (minutes)				63	56	57	51	57

(†) Data points are not shown in graphs for quarters when patient numbers are too small.

(‡) Caution is advised when interpreting abrupt changes over time at the hospital level. For example, performance before and after transition to a new information system is not directly comparable. For more information, see Background Paper: Approaches to reporting time measures of emergency department performance, December 2011.

(§) Quarterly information for this hospital is shown where data are available from the Health Information Exchange, NSW Health. For more information, see Background Paper: Approaches to reporting time measures of emergency department performance, December 2011.

Moruya District Hospital: Time patients waited to start treatment, triage 4 October to December 2017

Triage 4 Semi-urgent (e.g. sprained ankle, earache)

Number of triage 4 patients: 972

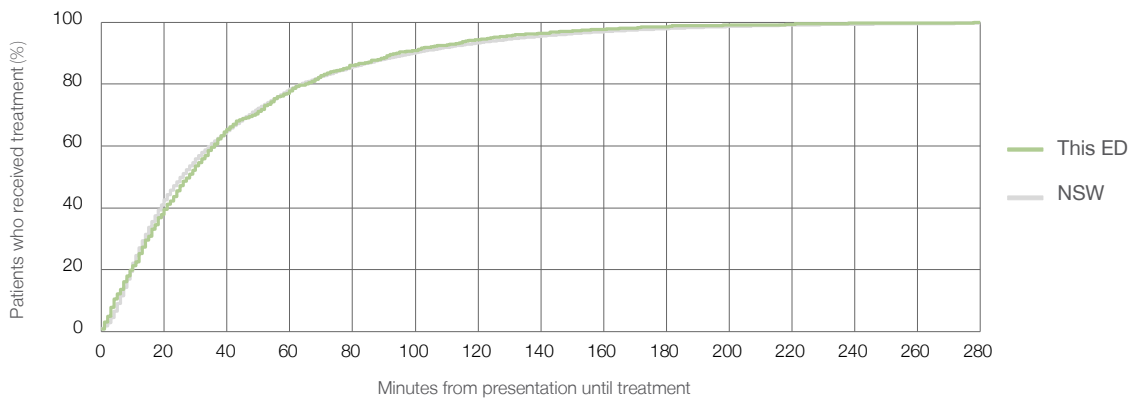
Number of triage 4 patients used to calculate waiting time:³ 857

Median time to start treatment⁴ 28 minutes

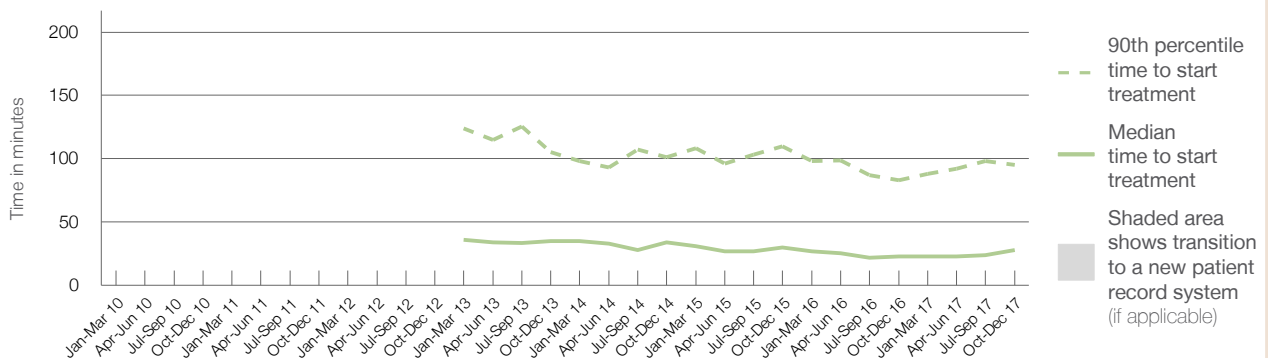
90th percentile time to start treatment⁵ 95 minutes

Same period last year	NSW (this period)
1,053	942
23 minutes	26 minutes
83 minutes	99 minutes

Percentage of triage 4 patients who received treatment by time, October to December 2017



Time patients waited to start treatment (minutes) for triage 4 patients, January 2010 to December 2017^{†‡§}



	Oct-Dec 2010	Oct-Dec 2011	Oct-Dec 2012	Oct-Dec 2013	Oct-Dec 2014	Oct-Dec 2015	Oct-Dec 2016	Oct-Dec 2017
Median time to start treatment ⁴ (minutes)				35	34	30	23	28
90th percentile time to start treatment ⁵ (minutes)				105	101	110	83	95

(†) Data points are not shown in graphs for quarters when patient numbers are too small.

(‡) Caution is advised when interpreting abrupt changes over time at the hospital level. For example, performance before and after transition to a new information system is not directly comparable. For more information, see Background Paper: Approaches to reporting time measures of emergency department performance, December 2011.

(§) Quarterly information for this hospital is shown where data are available from the Health Information Exchange, NSW Health. For more information, see Background Paper: Approaches to reporting time measures of emergency department performance, December 2011.

Moruya District Hospital: Time patients waited to start treatment, triage 5 October to December 2017

Triage 5 Non-urgent (e.g. small cuts or abrasions)

Number of triage 5 patients: 351

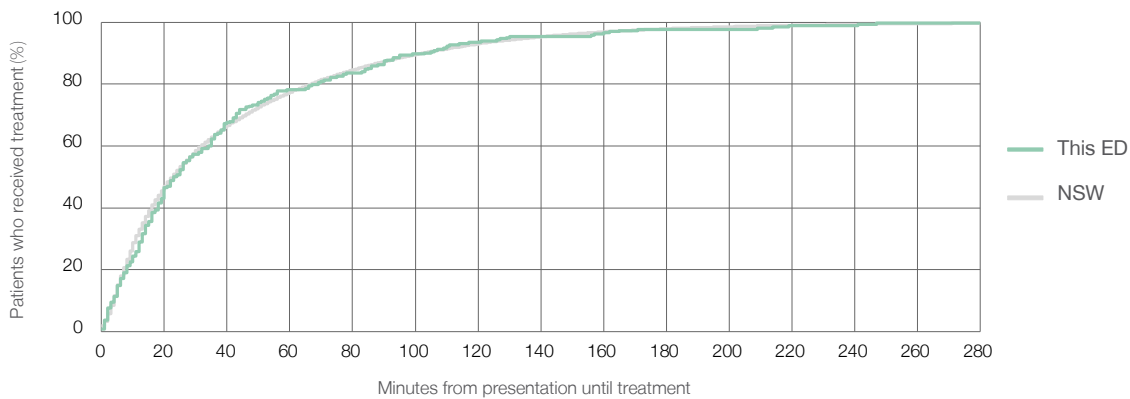
Number of triage 5 patients used to calculate waiting time:³ 262

Median time to start treatment⁴ 24 minutes

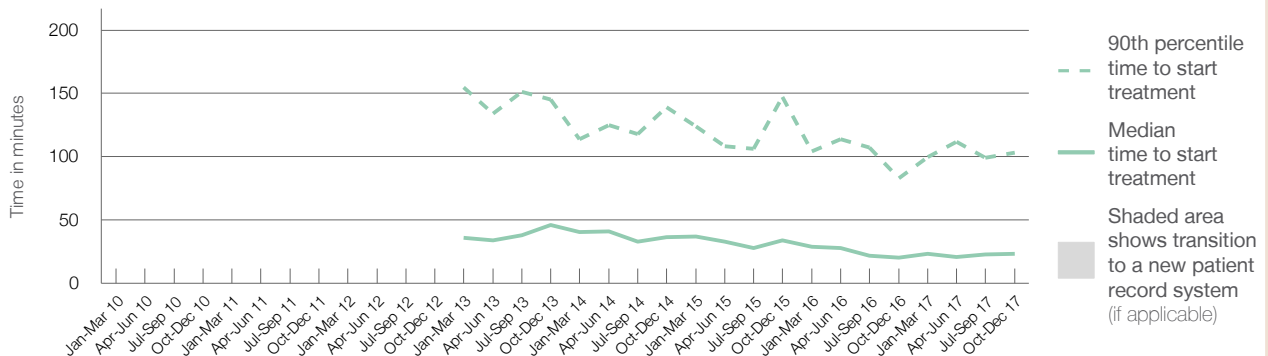
90th percentile time to start treatment⁵ 103 minutes

Same period last year	NSW (this period)
380	286
20 minutes	23 minutes
83 minutes	103 minutes

Percentage of triage 5 patients who received treatment by time, October to December 2017



Time patients waited to start treatment (minutes) for triage 5 patients, January 2010 to December 2017^{†‡§}



	Oct-Dec 2010	Oct-Dec 2011	Oct-Dec 2012	Oct-Dec 2013	Oct-Dec 2014	Oct-Dec 2015	Oct-Dec 2016	Oct-Dec 2017
Median time to start treatment ⁴ (minutes)				46	37	34	20	24
90th percentile time to start treatment ⁵ (minutes)				145	139	147	83	103

(†) Data points are not shown in graphs for quarters when patient numbers are too small.

(‡) Caution is advised when interpreting abrupt changes over time at the hospital level. For example, performance before and after transition to a new information system is not directly comparable. For more information, see Background Paper: Approaches to reporting time measures of emergency department performance, December 2011.

(§) Quarterly information for this hospital is shown where data are available from the Health Information Exchange, NSW Health. For more information, see Background Paper: Approaches to reporting time measures of emergency department performance, December 2011.

Moruya District Hospital: Time patients spent in the ED

October to December 2017

All presentations:¹ 2,842 patients

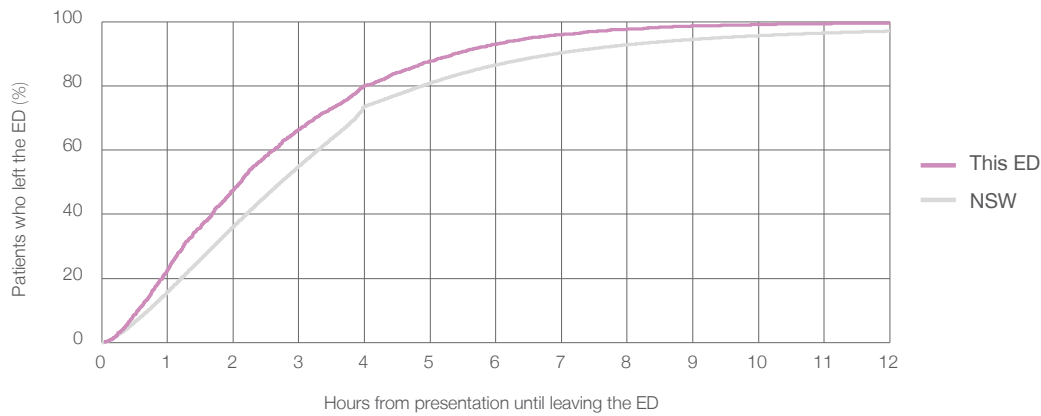
Presentations used to calculate time to leaving the ED:⁶ 2,842 patients

Median time spent in the ED⁸ 2 hours and 7 minutes

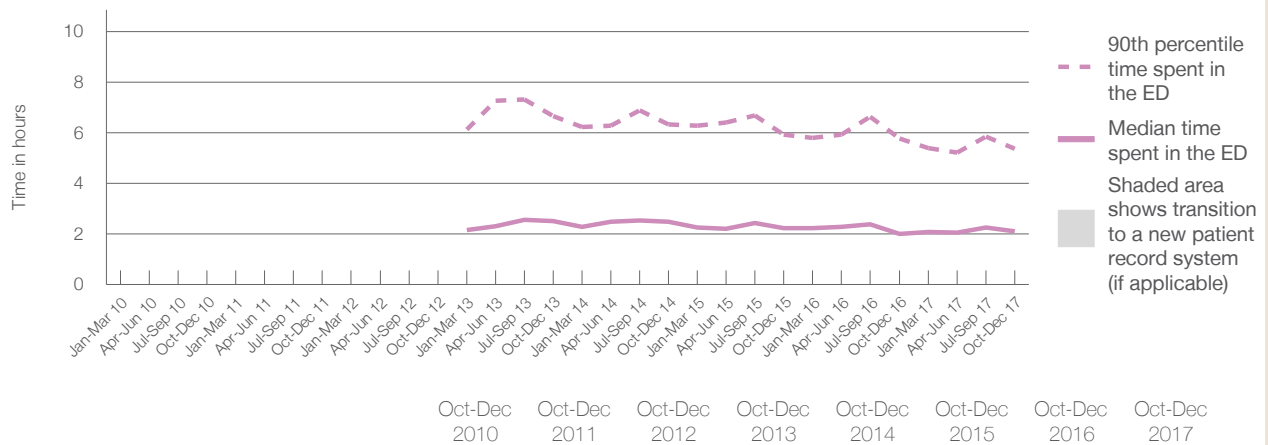
90th percentile time spent in the ED⁹ 5 hours and 22 minutes

Same period last year	NSW (this period)
2,787	2,787
2 hours and 0 minutes	2 hours and 44 minutes
5 hours and 46 minutes	6 hours and 55 minutes

Percentage of patients who left the ED by time, October to December 2017



Time patients spent in the ED, by quarter, January 2010 to December 2017^{†‡§}



	Oct-Dec 2010	Oct-Dec 2011	Oct-Dec 2012	Oct-Dec 2013	Oct-Dec 2014	Oct-Dec 2015	Oct-Dec 2016	Oct-Dec 2017
Median time to leaving the ED ⁸ (hours, minutes)				2h 31m	2h 30m	2h 14m	2h 0m	2h 7m
90th percentile time to leaving the ED ⁹ (hours, minutes)				6h 40m	6h 20m	5h 56m	5h 46m	5h 22m

(†) Data points are not shown in graphs for quarters when patient numbers are too small.

(‡) Caution is advised when interpreting abrupt changes over time at the hospital level. For example, performance before and after transition to a new information system is not directly comparable. For more information, see Background Paper: Approaches to reporting time measures of emergency department performance, December 2011.

(§) Quarterly information for this hospital is shown where data are available from the Health Information Exchange, NSW Health. For more information, see Background Paper: Approaches to reporting time measures of emergency department performance, December 2011.

Moruya District Hospital: Time patients spent in the ED
By mode of separation
October to December 2017

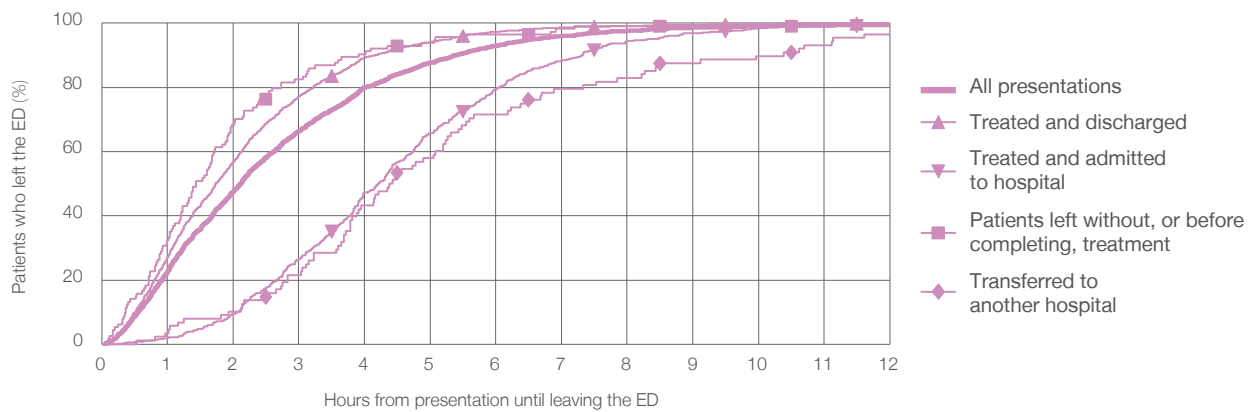
All presentations:¹ 2,842 patients

Presentations used to calculate time to leaving the ED:⁶ 2,842 patients

Treated and discharged	2,017 (71.0%)
Treated and admitted to hospital	538 (18.9%)
Patient left without, or before completing, treatment	114 (4.0%)
Transferred to another hospital	88 (3.1%)
Other	85 (3.0%)

Same period last year	Change since one year ago
2,787	2.0%
1,789	12.7%
752	-28.5%
86	32.6%
76	15.8%
84	1.2%

Percentage of patients who left the ED by time and mode of separation, October to December 2017^{†‡§}



1 hour 2 hours 3 hours 4 hours 6 hours 8 hours 10 hours 12 hours

Treated and discharged	27.2%	56.8%	77.2%	89.3%	97.3%	99.1%	99.7%	99.9%
Treated and admitted to hospital	2.0%	9.3%	26.6%	47.2%	79.4%	94.4%	98.3%	99.1%
Patient left without, or before completing, treatment	32.5%	68.4%	82.5%	90.4%	96.5%	99.1%	99.1%	99.1%
Transferred to another hospital	3.4%	10.2%	21.6%	43.2%	71.6%	83.0%	89.8%	96.6%
All presentations	22.7%	47.6%	66.4%	80.0%	93.0%	97.6%	99.1%	99.6%

(†) Data points are not shown in graphs for quarters when patient numbers are too small.

(‡) Caution is advised when interpreting abrupt changes over time at the hospital level. For example, performance before and after transition to a new information system is not directly comparable. For more information, see Background Paper: Approaches to reporting time measures of emergency department performance, December 2011.

(§) Quarterly information for this hospital is shown where data are available from the Health Information Exchange, NSW Health. For more information, see Background Paper: Approaches to reporting time measures of emergency department performance, December 2011.

Moruya District Hospital: Time spent in the ED
 Percentage of patients who spent four hours or less in the ED
 October to December 2017

All presentations at the emergency department: ¹ 2,842 patients

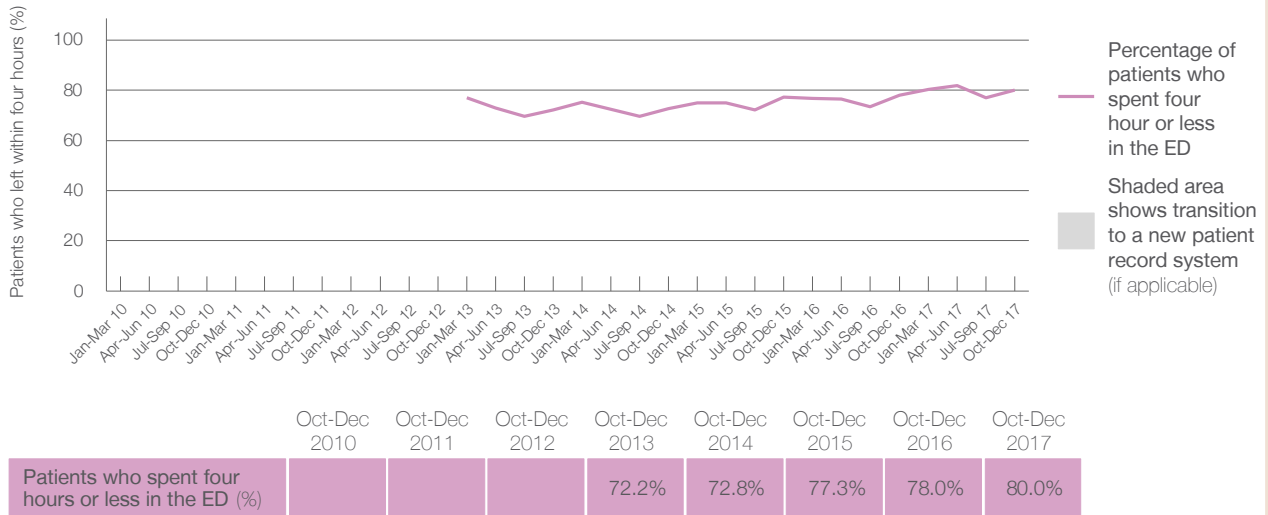
Presentations used to calculate time to leaving the ED: ⁶ 2,842 patients

Percentage of patients who spent four hours or less in the ED



	Same period last year	Change since one year ago
All presentations at the emergency department: ¹ 2,842 patients	2,787	2.0%
Presentations used to calculate time to leaving the ED: ⁶ 2,842 patients	2,787	2.0%
Percentage of patients who spent four hours or less in the ED	78.0%	

Percentage of patients who spent four hours or less in the ED, by quarter, January 2010 to December 2017 ^{†‡§}



* Suppressed due to small numbers and to protect privacy. Relevant graphs are also suppressed.
 † Data points are not shown in graphs for quarters when patient numbers were too small.
 ‡ Caution is advised when interpreting abrupt changes over time at the hospital level. For example, performance before and after transition to a new information system is not directly comparable. For more information see *Background Paper: Approaches to reporting time measures of emergency department performance, December 2011*.
 § Quarterly information for this hospital is shown where data are available from the Health Information Exchange, NSW Health. For more information, see *Background Paper: Approaches to reporting time measures of emergency department performance, December 2011*.

- All emergency and non-emergency presentations at the emergency department (ED).
- All presentations that have a triage category and are coded as emergency presentations or unplanned return visits.
- Some patients are excluded from ED time measures due to calculation requirements. For details, see the *Technical Supplement: Emergency department measures, July to September 2016*.
- The median is the time by which half of patients started treatment. The other half of patients took equal to or longer than this time.
- The 90th percentile is the time by which 90% of patients started treatment. The final 10% of patients took equal to or longer than this time.
- All presentations that have a departure time.
- Transfer of care time refers to the period between arrival of patients at the ED by ambulance and the transfer of responsibility for their care from paramedics to ED staff in an ED treatment zone. For more information see *Spotlight on Measurement: measuring transfer of care from the ambulance to the emergency department*.
- The median is the time by which half of patients left the ED. The other half of patients took equal to or longer than this time.
- The 90th percentile is the time by which 90% of patients left the ED. The final 10% of patients took equal to or longer than this time.

Note: Presentation time is the earlier of times recorded for the start of clerical registration or the triage process.
 Treatment time is the earliest time recorded when a healthcare professional provides medical care that is relevant to the patient's presenting problems. For patients who were treated and discharged, departure time is the time when treatment was completed. For all other patients, departure time is the time when the patient actually left the ED.

Note: All percentages are rounded and therefore percentages may not add to 100%.

Sources: ED data from Health Information Exchange, NSW Health (extracted 23 January 2018).
 Transfer of care data from Transfer of Care Reporting System (extracted 23 January 2018).