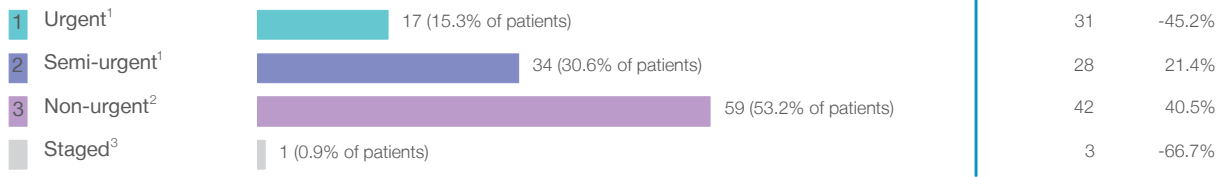


Moree District Hospital: Elective surgery performed

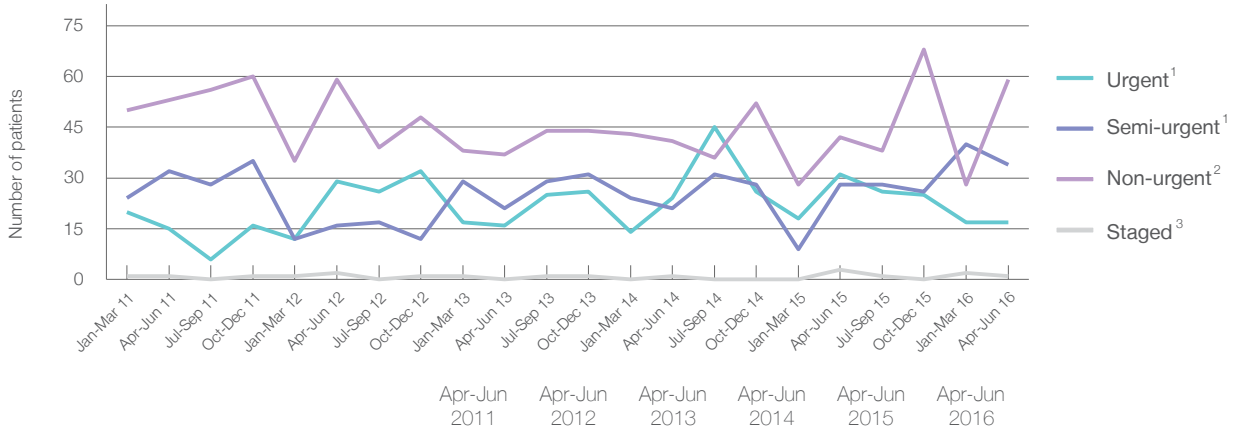
April to June 2016

Patients who received elective surgery by urgency category: 111 patients



Urgency Category	Same period last year	Change since one year ago
1 Urgent ¹	31	-45.2%
2 Semi-urgent ¹	28	21.4%
3 Non-urgent ²	42	40.5%
Staged ³	3	-66.7%

Patients who received elective surgery by urgency category by quarter, April 2011 to June 2016



Urgency Category	Apr-Jun 2011	Apr-Jun 2012	Apr-Jun 2013	Apr-Jun 2014	Apr-Jun 2015	Apr-Jun 2016
All categories	101	106	74	87	104	111
Urgent ¹	15	29	16	24	31	17
Semi-urgent ¹	32	16	21	21	28	34
Non-urgent ²	53	59	37	41	42	59
Staged ³	1	2	0	1	3	1

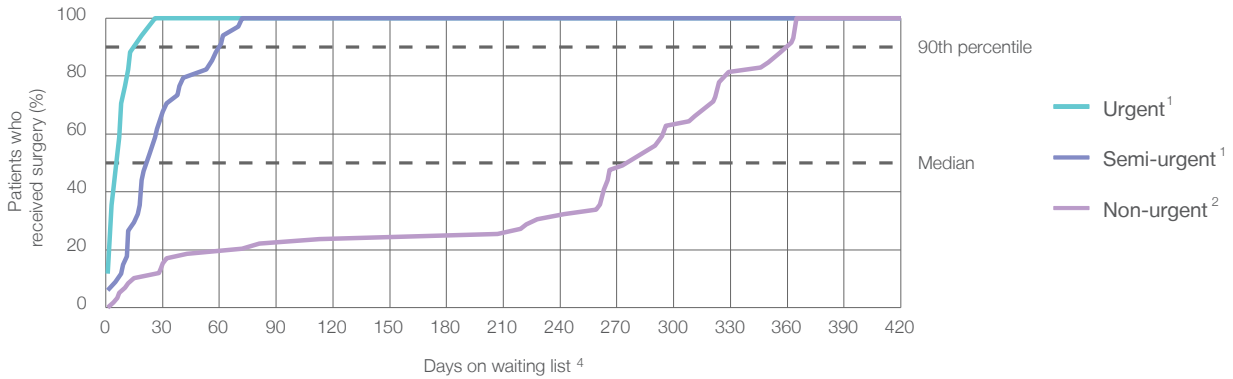
Moree District Hospital: Time waited to receive elective surgery

April to June 2016

Percentage of patients who received surgery within the clinically recommended timeframe

	Recommended:	100%	Same period last year	Peer group (this period)
1 Urgent ¹	30 days	100%	100%	99.3%
2 Semi-urgent ¹	90 days	100%	100%	99.4%
3 Non-urgent ²	365 days	100%	100%	98.5%

Percentage of patients who received elective surgery by waiting time (days)



Waiting time (days) for people who received surgery by urgency category

	Peer group (this period)	This hospital (same period last year)	Peer group (same period last year)
1 Urgent: ¹ 17 patients			
Median time to receive surgery	7 days	12	6
90th percentile time to receive surgery	*	26	*
2 Semi-urgent: ¹ 34 patients			
Median time to receive surgery	23 days	35	26
90th percentile time to receive surgery	*	72	*
3 Non-urgent: ² 59 patients			
Median time to receive surgery	290 days	196	190
90th percentile time to receive surgery	*	326	*

Moree District Hospital: Time waited to receive elective surgery

April to June 2016

Median ⁵ waiting time (days) for patients who received elective surgery by specialty of surgeon		Same period last year	Peer group (this period)
Cardiothoracic surgery	n/a (0 patients)	n/a	n/a
Ear, nose and throat surgery	* (5 patients)	*	69
General surgery	17 days (49 patients)	14	33
Gynaecology	n/a (0 patients)	n/a	37
Medical	* (< 5 patients)	n/a	25
Neurosurgery	n/a (0 patients)	n/a	n/a
Ophthalmology	291 days (52 patients)	214	216
Orthopaedic surgery	* (< 5 patients)	*	85
Plastic surgery	n/a (0 patients)	n/a	n/a
Urology	n/a (0 patients)	n/a	27
Vascular surgery	n/a (0 patients)	n/a	163

Median ⁵ waiting time (days) for patients who received elective surgery by common procedures ⁷		Same period last year	Peer group (this period)
Abdominal hysterectomy	n/a (0 patients)	n/a	53
Cataract extraction	290 days (45 patients)	208	228
Cholecystectomy	* (7 patients)	*	36
Coronary artery bypass graft	n/a (0 patients)	n/a	n/a
Cystoscopy	n/a (0 patients)	n/a	21
Haemorrhoidectomy	n/a (0 patients)	*	60
Hysteroscopy	n/a (0 patients)	*	34
Inguinal herniorrhaphy	* (7 patients)	*	60
Myringoplasty / Tympanoplasty	n/a (0 patients)	n/a	*
Myringotomy	* (< 5 patients)	n/a	*
Other - General	n/a (0 patients)	*	22
Prostatectomy	n/a (0 patients)	n/a	*
Septoplasty	n/a (0 patients)	n/a	189
Tonsillectomy	* (< 5 patients)	*	217
Total hip replacement	n/a (0 patients)	n/a	n/a
Total knee replacement	n/a (0 patients)	n/a	n/a
Varicose veins stripping and ligation	n/a (0 patients)	n/a	160

Moree District Hospital: Elective surgery waiting list

April to June 2016

Patients ready for surgery on waiting list at start of quarter: 108 patients

Patients ready for surgery on waiting list at end of quarter: 133 patients

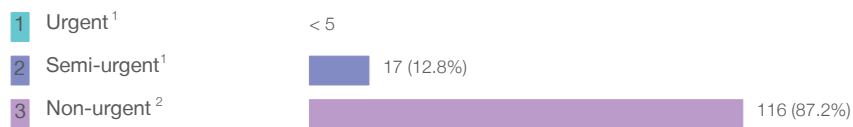
Patients not ready for surgery⁸ on waiting list at end of quarter: 13 patients

	Same period last year	Change since one year ago
Patients ready for surgery on waiting list at start of quarter	108	0.0%
Patients ready for surgery on waiting list at end of quarter	129	3.1%
Patients not ready for surgery ⁸ on waiting list at end of quarter	9	44.4%

Moree District Hospital: Patients ready for elective surgery

as at 30th June 2016

Patients ready for surgery on waiting list by urgency category: 133 patients



	Same period last year	Change since one year ago
Urgent ¹	5	*
Semi-urgent ¹	12	33.3%
Non-urgent ²	112	3.6%

Moree District Hospital: Patients ready for elective surgery

as at 30th June 2016

Patients ready for elective surgery by specialty of surgeon: 133 patients

	As at 30 Jun 2016	Same time last year	Change since one year ago
All specialties	133	129	3.1%
Cardiothoracic surgery	0	0	n/a
Ear, nose and throat surgery	0	< 5	*
General surgery	21	17	23.5%
Gynaecology	0	0	n/a
Medical	0	0	n/a
Neurosurgery	0	0	n/a
Ophthalmology	108	107	0.9%
Orthopaedic surgery	< 5	< 5	*
Plastic surgery	0	0	n/a
Urology	0	0	n/a
Vascular surgery	0	0	n/a

Patients ready for elective surgery for common procedures⁷

	As at 30 Jun 2016	Same time last year	Change since one year ago
Abdominal hysterectomy	0	< 5	n/a
Cataract extraction	105	95	10.5%
Cholecystectomy	< 5	< 5	*
Coronary artery bypass graft	0	< 5	n/a
Cystoscopy	0	< 5	n/a
Haemorrhoidectomy	0	< 5	n/a
Hysteroscopy	0	< 5	n/a
Inguinal herniorrhaphy	< 5	< 5	*
Myringoplasty / Tympanoplasty	0	< 5	n/a
Myringotomy	0	< 5	n/a
Other - General	0	< 5	n/a
Prostatectomy	0	< 5	n/a
Septoplasty	0	< 5	*
Tonsillectomy	0	< 5	*
Total hip replacement	0	< 5	n/a
Total knee replacement	0	< 5	n/a
Varicose veins stripping and ligation	0	< 5	n/a

Moree District Hospital: Patients ready for elective surgery
as at 30th June 2016

Patients ready for elective surgery, on the waiting list for longer than 12 months

	As at 30 Jun 2016	Same time last year
All specialties	0	0

* Suppressed due to small numbers and to protect privacy. Relevant graphs are also suppressed.

< 5 Less than five patients. For measures by urgency category, counts are included in an adjacent category. Relevant graphs are also suppressed.

1. Excluding staged procedures.
2. Excluding staged procedures and cystoscopy.
3. Including non-urgent cystoscopy.
4. Excludes the total number of days the patient was coded as 'not ready for surgery'.
5. This is the number of days it took for half of patients who received elective surgery during the period to be admitted and receive their surgery. The other half took equal to or longer than the median to be admitted for surgery.
6. This is the number of days it took for 90% of patients who received elective surgery during the period to be admitted and receive their surgery. The final 10% of patients took equal to or longer than the 90th percentile.
7. The procedures included in this list are procedures which are high volume; some may be associated with long waiting periods. For a description of these procedures see *Elective Surgery Glossary of Common Procedures, December 2012*.
8. Includes staged procedures, non-urgent cystoscopy, and patients currently not available for personal reasons.

For more information: For details of methods, see the *Technical Supplement: Elective surgery measures, January to March 2013*.

Note: All percentages rounded to whole numbers and therefore percentages may not add to 100%.

Source: Waiting List Collection On-Line System, NSW Health (extracted 12 July 2016).