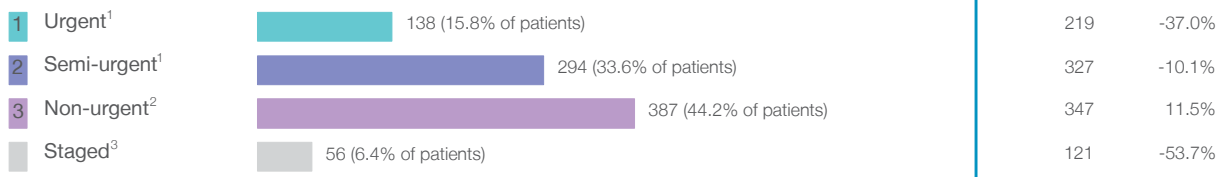


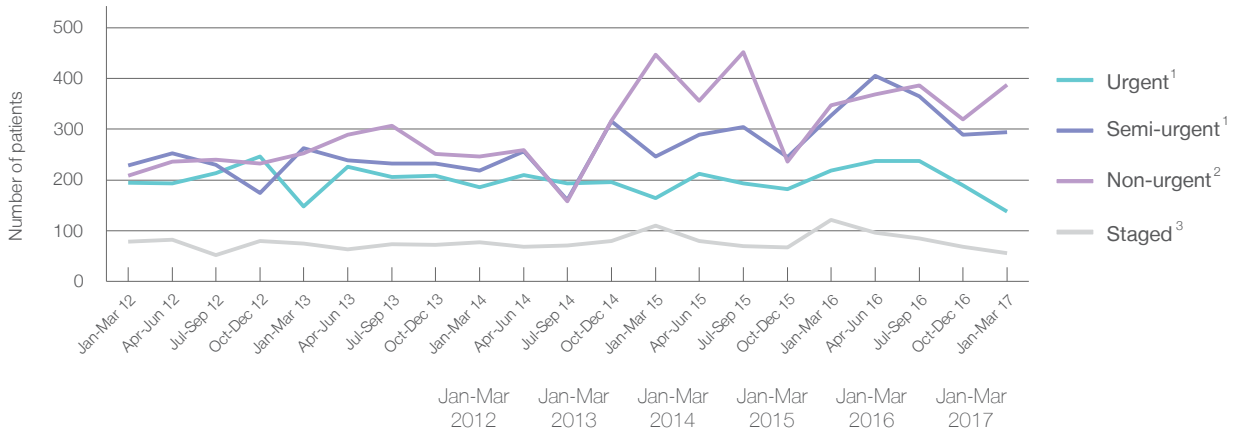
## Port Macquarie Base Hospital: Elective surgery performed

January to March 2017

Patients who received elective surgery by urgency category: 875 patients



Patients who received elective surgery by urgency category by quarter, January 2012 to March 2017



Urgency Category	Jan-Mar 2012	Jan-Mar 2013	Jan-Mar 2014	Jan-Mar 2015	Jan-Mar 2016	Jan-Mar 2017
All categories	711	738	728	968	1,014	875
Urgent <sup>1</sup>	195	148	186	165	219	138
Semi-urgent <sup>1</sup>	229	263	219	246	327	294
Non-urgent <sup>2</sup>	208	252	246	447	347	387
Staged <sup>3</sup>	79	75	77	110	121	56

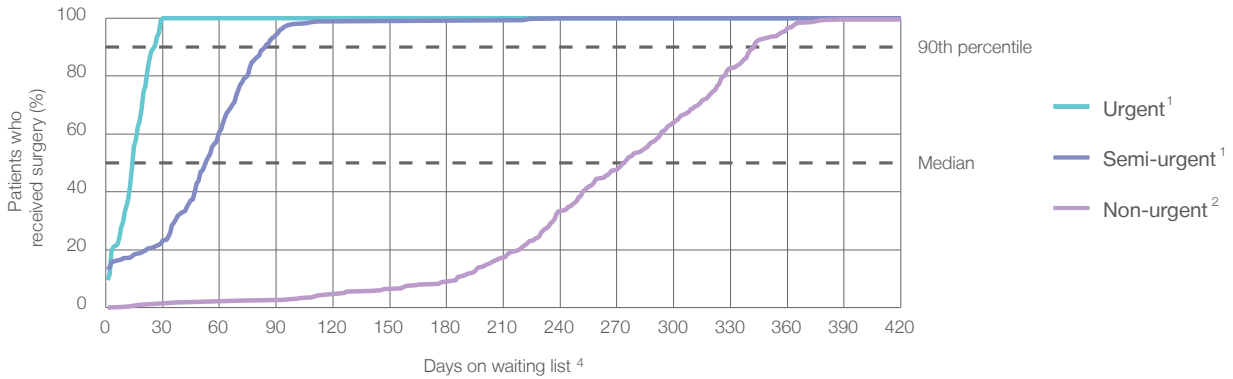
## Port Macquarie Base Hospital: Time waited to receive elective surgery

January to March 2017

Percentage of patients who received surgery within the clinically recommended timeframe

	Recommended: (days)	Percentage	Same period last year	Peer group (this period)
1 Urgent <sup>1</sup>	30 days	100%	99.1%	99.7%
2 Semi-urgent <sup>1</sup>	90 days	93.5%	97.6%	97.1%
3 Non-urgent <sup>2</sup>	365 days	98.2%	97.4%	95.9%

Percentage of patients who received elective surgery by waiting time (days)



Waiting time (days) for people who received surgery by urgency category

Urgency Category	Number of Patients	Median time to receive surgery (days)	90th percentile time to receive surgery (days)	Peer group (this period)	This hospital (same period last year)	Peer group (same period last year)
1 Urgent <sup>1</sup>	138 patients	15 days	26 days	13	14	13
2 Semi-urgent <sup>1</sup>	294 patients	53 days	85 days	50	60	51
3 Non-urgent <sup>2</sup>	387 patients	274 days	343 days	266	284	273

## Port Macquarie Base Hospital: Time waited to receive elective surgery

January to March 2017

### Median<sup>5</sup> waiting time (days) for patients who received elective surgery by specialty of surgeon

Specialty	Waiting time (days) (n patients)	Same period last year	Peer group (this period)
Cardiothoracic surgery	n/a (0 patients)	n/a	*
Ear, nose and throat surgery	262 days (94 patients)	169	247
General surgery	38 days (184 patients)	52	62
Gynaecology	35 days (96 patients)	30	49
Medical	* (< 5 patients)	*	21
Neurosurgery	n/a (0 patients)	n/a	n/a
Ophthalmology	234 days (90 patients)	281	287
Orthopaedic surgery	270 days (166 patients)	260	236
Plastic surgery	n/a (0 patients)	n/a	81
Urology	62 days (164 patients)	65	39
Vascular surgery	18 days (78 patients)	19	23

### Median<sup>5</sup> waiting time (days) for patients who received elective surgery by common procedures<sup>7</sup>

Procedure	Waiting time (days) (n patients)	Same period last year	Peer group (this period)
Abdominal hysterectomy	* (< 5 patients)	*	82
Cataract extraction	235 days (69 patients)	287	292
Cholecystectomy	46 days (38 patients)	54	70
Coronary artery bypass graft	n/a (0 patients)	n/a	n/a
Cystoscopy	63 days (46 patients)	61	29
Haemorrhoidectomy	* (< 5 patients)	*	78
Hysteroscopy	24 days (23 patients)	26	35
Inguinal herniorrhaphy	212 days (16 patients)	289	105
Myringoplasty / Tympanoplasty	n/a (0 patients)	*	309
Myringotomy	n/a (0 patients)	n/a	64
Other - General	* (< 5 patients)	*	55
Prostatectomy	70 days (31 patients)	71	64
Septoplasty	* (9 patients)	*	324
Tonsillectomy	299 days (67 patients)	217	286
Total hip replacement	283 days (28 patients)	280	275
Total knee replacement	292 days (45 patients)	298	313
Varicose veins stripping and ligation	* (< 5 patients)	309	144

### Port Macquarie Base Hospital: Elective surgery waiting list

January to March 2017

Patients ready for surgery on waiting list at start of quarter: 1,367 patients

Patients ready for surgery on waiting list at end of quarter: 1,267 patients

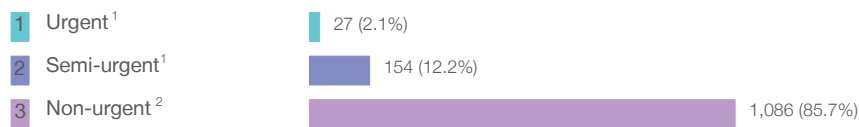
Patients not ready for surgery<sup>8</sup> on waiting list at end of quarter: 317 patients

	Same period last year	Change since one year ago
Patients ready for surgery on waiting list at start of quarter	1,180	15.8%
Patients ready for surgery on waiting list at end of quarter	1,357	-6.6%
Patients not ready for surgery <sup>8</sup> on waiting list at end of quarter	276	14.9%

### Port Macquarie Base Hospital: Patients ready for elective surgery

as at 31st March 2017

Patients ready for surgery on waiting list by urgency category: 1,267 patients



	Same period last year	Change since one year ago
Urgent <sup>1</sup>	26	3.8%
Semi-urgent <sup>1</sup>	212	-27.4%
Non-urgent <sup>2</sup>	1,119	-2.9%

## Port Macquarie Base Hospital: Patients ready for elective surgery as at 31st March 2017

Patients ready for elective surgery by specialty of surgeon: 1,267 patients

	As at 31 Mar 2017	Same time last year	Change since one year ago
All specialties	1,267	1,357	-6.6%
Cardiothoracic surgery	0	0	n/a
Ear, nose and throat surgery	43	83	-48.2%
General surgery	174	183	-4.9%
Gynaecology	92	129	-28.7%
Medical	6	6	0.0%
Neurosurgery	0	0	n/a
Ophthalmology	109	187	-41.7%
Orthopaedic surgery	659	561	17.5%
Plastic surgery	0	0	n/a
Urology	162	178	-9.0%
Vascular surgery	22	30	-26.7%

Patients ready for elective surgery for common procedures <sup>7</sup>

	As at 31 Mar 2017	Same time last year	Change since one year ago
Abdominal hysterectomy	10	16	-37.5%
Cataract extraction	54	156	-65.4%
Cholecystectomy	32	31	3.2%
Coronary artery bypass graft	0	< 5	n/a
Cystoscopy	10	39	-74.4%
Haemorrhoidectomy	< 5	< 5	*
Hysteroscopy	6	19	-68.4%
Inguinal herniorrhaphy	45	48	-6.3%
Myringoplasty / Tympanoplasty	< 5	< 5	*
Myringotomy	0	< 5	n/a
Other - General	6	6	0.0%
Prostatectomy	48	46	4.3%
Septoplasty	< 5	5	*
Tonsillectomy	27	64	-57.8%
Total hip replacement	123	93	32.3%
Total knee replacement	236	231	2.2%
Varicose veins stripping and ligation	0	5	-100.0%

**Port Macquarie Base Hospital: Patients ready for elective surgery**  
as at 31st March 2017

Patients ready for elective surgery, on the waiting list for longer than 12 months

As at 31 Mar 2017      Same time last year

	As at 31 Mar 2017	Same time last year
All specialties	< 5	< 5

\* Suppressed due to small numbers and to protect privacy. Relevant graphs are also suppressed.

< 5 Less than five patients. For measures by urgency category, counts are included in an adjacent category. Relevant graphs are also suppressed.

1. Excluding staged procedures.
2. Excluding staged procedures and cystoscopy.
3. Including non-urgent cystoscopy.
4. Excludes the total number of days the patient was coded as 'not ready for surgery'.
5. This is the number of days it took for half of patients who received elective surgery during the period to be admitted and receive their surgery. The other half took equal to or longer than the median to be admitted for surgery.
6. This is the number of days it took for 90% of patients who received elective surgery during the period to be admitted and receive their surgery. The final 10% of patients took equal to or longer than the 90th percentile.
7. The procedures included in this list are procedures which are high volume; some may be associated with long waiting periods. For a description of these procedures see *Elective Surgery Glossary of Common Procedures, December 2012*.
8. Includes staged procedures, non-urgent cystoscopy, and patients currently not available for personal reasons.

For more information: For details of methods, see the *Technical Supplement: Elective surgery measures, July to September 2016*.

**Note:** All percentages rounded to whole numbers and therefore percentages may not add to 100%.

**Source:** Waiting List Collection On-Line System, NSW Health (extracted 18 April 2017.).