

Moruya District Hospital: Emergency department (ED) overview

April to June 2018

All presentations:¹ 2,553 patients
 Emergency presentations:² 2,374 patients

Same period last year	Change since one year ago
2,536	1%
2,352	1%

Moruya District Hospital: Time patients waited to start treatment³

April to June 2018

Triage 2 Emergency (e.g. chest pain, severe burns): 336 patients

Median time to start treatment⁴ 6 minutes
 90th percentile time to start treatment⁵ 24 minutes

Triage 3 Urgent (e.g. moderate blood loss, dehydration): 892 patients

Median time to start treatment⁴ 17 minutes
 90th percentile time to start treatment⁵ 58 minutes

Triage 4 Semi-urgent (e.g. sprained ankle, earache): 910 patients

Median time to start treatment⁴ 24 minutes
 90th percentile time to start treatment⁵ 84 minutes

Triage 5 Non-urgent (e.g. small cuts or abrasions): 219 patients

Median time to start treatment⁴ 21 minutes
 90th percentile time to start treatment⁵ 66 minutes

Same period last year	NSW (this period)
312	
7 minutes	8 minutes
23 minutes	24 minutes
830	
17 minutes	19 minutes
60 minutes	63 minutes
867	
23 minutes	24 minutes
92 minutes	95 minutes
329	
21 minutes	21 minutes
112 minutes	96 minutes

Moruya District Hospital: Time from presentation until leaving the ED

April to June 2018

Attendances used to calculate time to leaving the ED:⁶ 2,553 patients

Percentage of patients who spent four hours or less in the ED 79%

Same period last year	Change since one year ago
2,536	1%
82%	

* Suppressed due to small number of patients and to protect privacy. Relevant graphs are also suppressed.

- All emergency and non-emergency attendances at the emergency department (ED).
- All attendances that have a triage category and are coded as emergency presentations or unplanned return visits.
- Some patients are excluded from ED time measures due to calculation requirements. For details, see the *Technical Supplement: Emergency department measures, January to March 2018*.
- The median is the time by which half of patients started treatment. The other half of patients waited equal to or longer than this time.
- The 90th percentile is the time by which 90% of patients started treatment. The final 10% of patients waited equal to or longer than this time.
- All presentations that have a departure time.

Note: Presentation time is the earlier time recorded for clerical registration or the triage process. Treatment time is the earliest time recorded when a healthcare professional provides medical care relevant to the patient's presenting problems.

Source: Health Information Exchange, NSW Health (extracted 18 July 2018).

Moruya District Hospital: Patients presenting to the emergency department

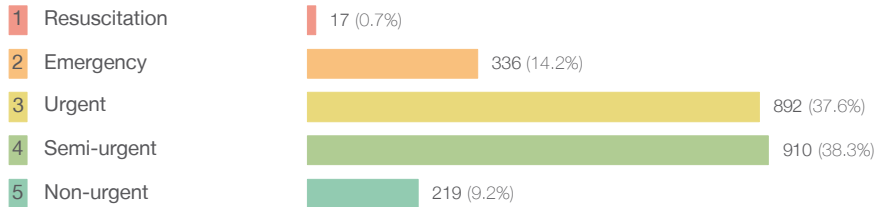
April to June 2018

All presentations:¹ 2,553 patients

Same period last year	Change since one year ago
2,536	1%

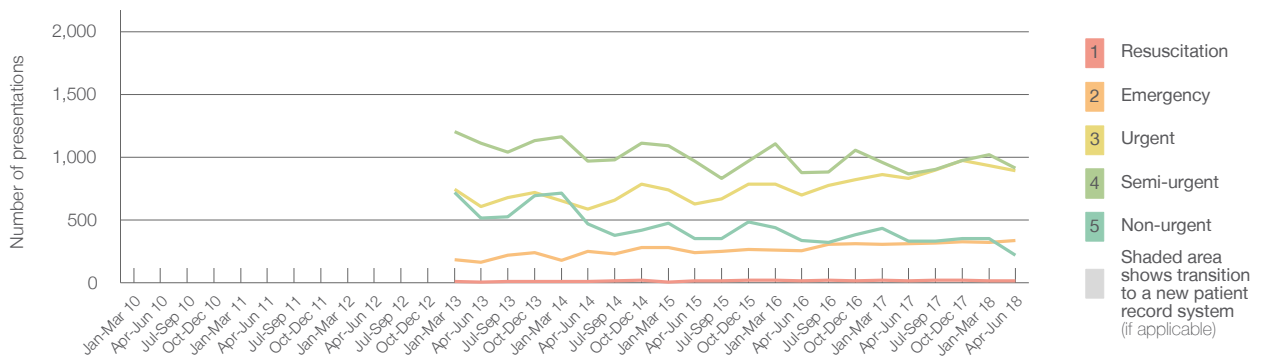
Emergency presentations² by triage category: 2,374 patients

2,352	1%
-------	----



14	21.4%
312	7.7%
830	7.5%
867	5.0%
329	-33.4%

Emergency presentations² by quarter, January 2010 to June 2018 † §



	Apr-Jun 2010	Apr-Jun 2011	Apr-Jun 2012	Apr-Jun 2013	Apr-Jun 2014	Apr-Jun 2015	Apr-Jun 2016	Apr-Jun 2017	Apr-Jun 2018
Resuscitation				5	8	13	17	14	17
Emergency				165	248	241	252	312	336
Urgent				608	586	626	699	830	892
Semi-urgent				1,109	968	970	875	867	910
Non-urgent				513	470	351	334	329	219
All emergency presentations				2,400	2,280	2,201	2,177	2,352	2,374

Moruya District Hospital: Patients arriving by ambulance

April to June 2018

Arrivals used to calculate transfer of care time:⁷ 500 patients

550	
-----	--

ED Transfer of care time



12 minutes	-1 minute
29 minutes	-3 minutes

(†) Data points are not shown in graphs for quarters when patient numbers are too small.

(‡) Caution is advised when interpreting abrupt changes over time at the hospital level. For example, performance before and after transition to a new information system is not directly comparable. For more information, see Background Paper: Approaches to reporting time measures of emergency department performance, December 2011.

(§) Quarterly information for this hospital is shown where data are available from the Health Information Exchange, NSW Health. For more information, see Background Paper: Approaches to reporting time measures of emergency department performance, December 2011.

Moruya District Hospital: Time patients waited to start treatment, triage 2

April to June 2018

Triage 2 Emergency (e.g. chest pain, severe burns)

Number of triage 2 patients: 336

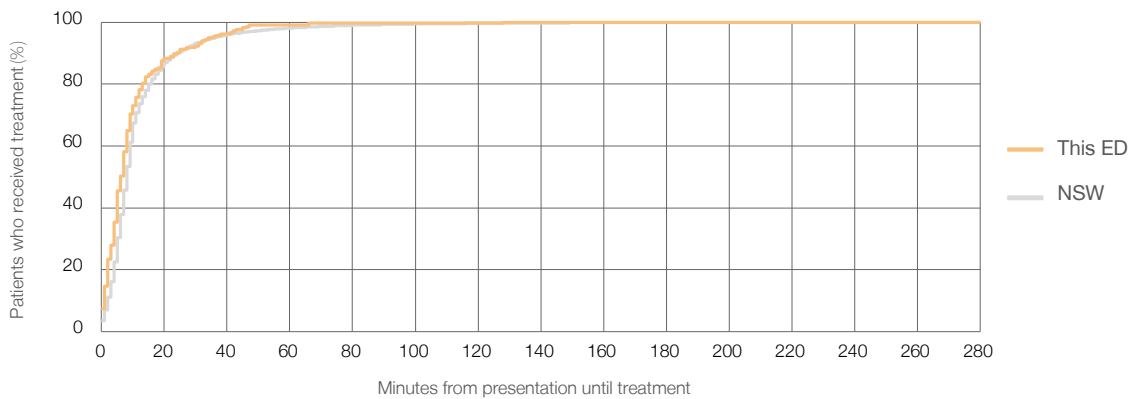
Number of triage 2 patients used to calculate waiting time:³ 334

Median time to start treatment⁴ 6 minutes

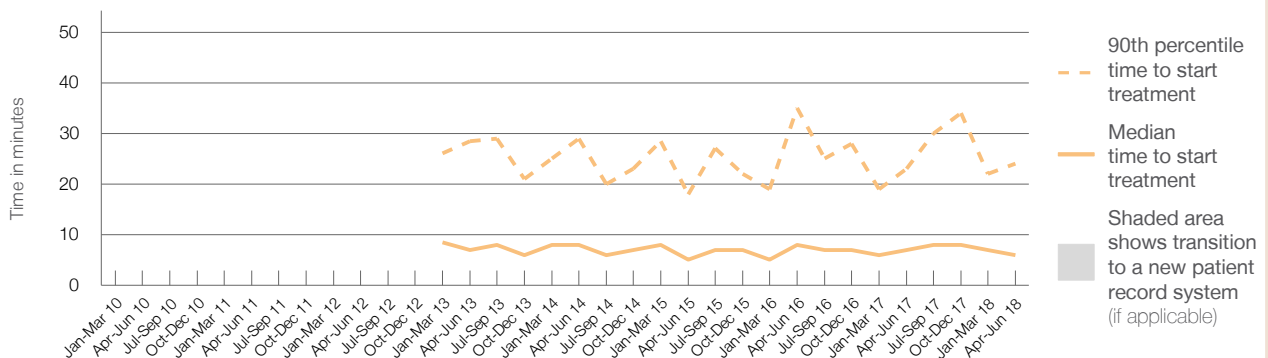
90th percentile time to start treatment⁵ 24 minutes

Same period last year	NSW (this period)
312	309
7 minutes	8 minutes
23 minutes	24 minutes

Percentage of triage 2 patients who received treatment by time, April to June 2018



Time patients waited to start treatment (minutes) for triage 2 patients, January 2010 to June 2018^{†‡§}



	Apr-Jun 2010	Apr-Jun 2011	Apr-Jun 2012	Apr-Jun 2013	Apr-Jun 2014	Apr-Jun 2015	Apr-Jun 2016	Apr-Jun 2017	Apr-Jun 2018
Median time to start treatment ⁴ (minutes)				7	8	5	8	7	6
90th percentile time to start treatment ⁵ (minutes)				29	29	18	35	23	24

(†) Data points are not shown in graphs for quarters when patient numbers are too small.

(‡) Caution is advised when interpreting abrupt changes over time at the hospital level. For example, performance before and after transition to a new information system is not directly comparable. For more information, see Background Paper: Approaches to reporting time measures of emergency department performance, December 2011.

(§) Quarterly information for this hospital is shown where data are available from the Health Information Exchange, NSW Health. For more information, see Background Paper: Approaches to reporting time measures of emergency department performance, December 2011.

Moruya District Hospital: Time patients waited to start treatment, triage 3 April to June 2018

Triage 3 Urgent (e.g. moderate blood loss, dehydration)

Number of triage 3 patients: 892

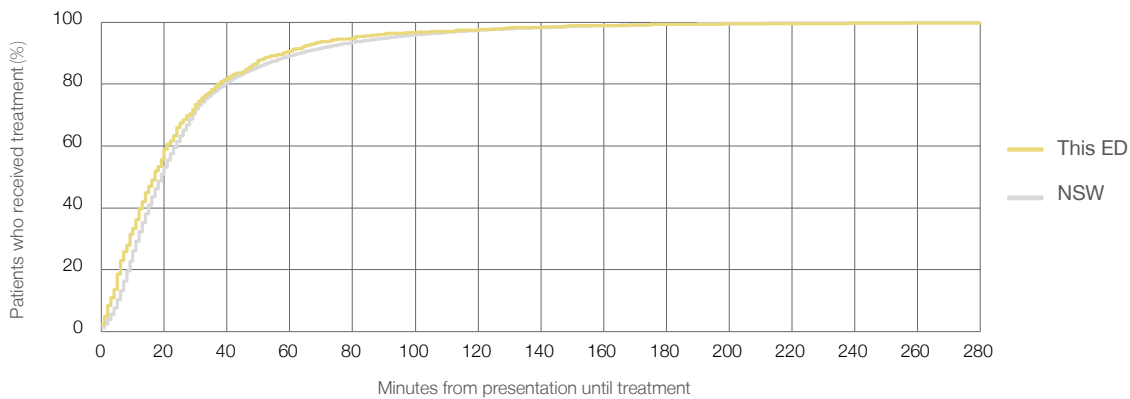
Number of triage 3 patients used to calculate waiting time:³ 869

Median time to start treatment⁴ 17 minutes

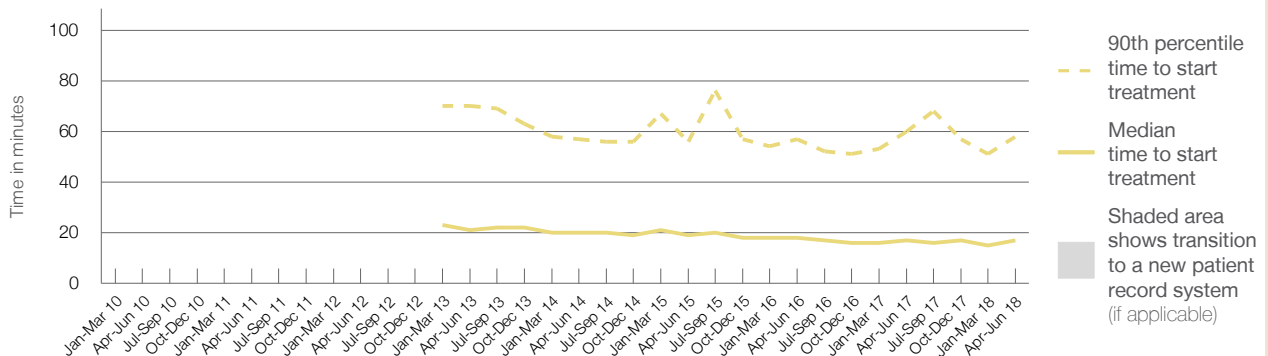
90th percentile time to start treatment⁵ 58 minutes

Same period last year	NSW (this period)
830	
801	
17 minutes	19 minutes
60 minutes	63 minutes

Percentage of triage 3 patients who received treatment by time, April to June 2018



Time patients waited to start treatment (minutes) for triage 3 patients, January 2010 to June 2018^{†‡§}



	Apr-Jun 2010	Apr-Jun 2011	Apr-Jun 2012	Apr-Jun 2013	Apr-Jun 2014	Apr-Jun 2015	Apr-Jun 2016	Apr-Jun 2017	Apr-Jun 2018
Median time to start treatment ⁴ (minutes)				21	20	19	18	17	17
90th percentile time to start treatment ⁵ (minutes)				70	57	56	57	60	58

(†) Data points are not shown in graphs for quarters when patient numbers are too small.

(‡) Caution is advised when interpreting abrupt changes over time at the hospital level. For example, performance before and after transition to a new information system is not directly comparable. For more information, see Background Paper: Approaches to reporting time measures of emergency department performance, December 2011.

(§) Quarterly information for this hospital is shown where data are available from the Health Information Exchange, NSW Health. For more information, see Background Paper: Approaches to reporting time measures of emergency department performance, December 2011.

Moruya District Hospital: Time patients waited to start treatment, triage 4 April to June 2018

Triage 4 Semi-urgent (e.g. sprained ankle, earache)

Number of triage 4 patients: 910

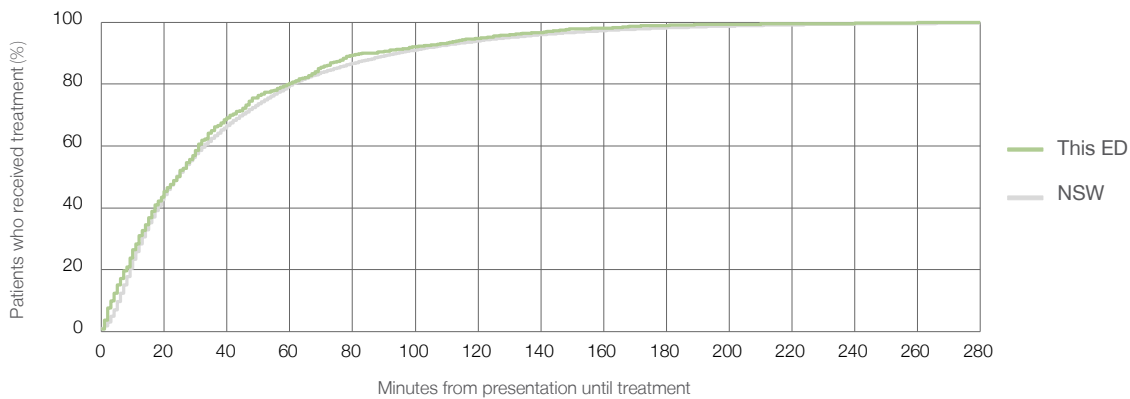
Number of triage 4 patients used to calculate waiting time:³ 816

Median time to start treatment⁴ 24 minutes

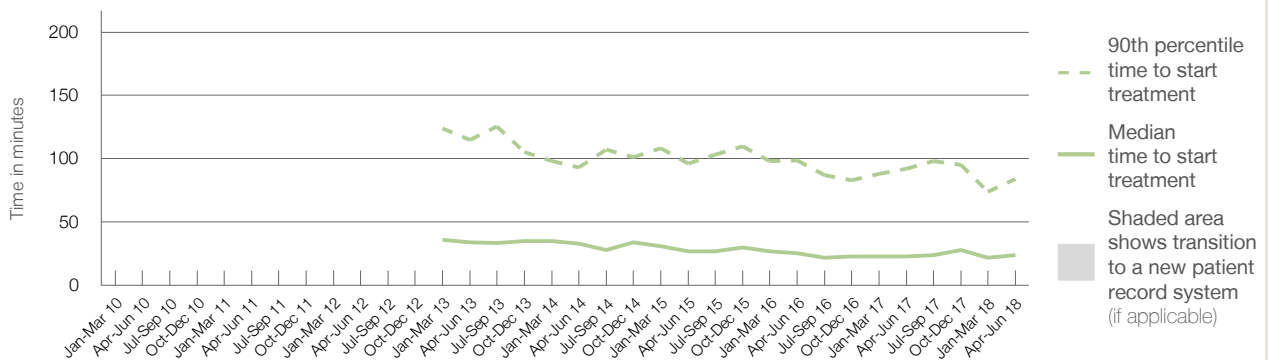
90th percentile time to start treatment⁵ 84 minutes

Same period last year	NSW (this period)
867	779
23 minutes	24 minutes
92 minutes	95 minutes

Percentage of triage 4 patients who received treatment by time, April to June 2018



Time patients waited to start treatment (minutes) for triage 4 patients, January 2010 to June 2018^{†‡§}



	Apr-Jun 2010	Apr-Jun 2011	Apr-Jun 2012	Apr-Jun 2013	Apr-Jun 2014	Apr-Jun 2015	Apr-Jun 2016	Apr-Jun 2017	Apr-Jun 2018
Median time to start treatment ⁴ (minutes)				34	33	27	26	23	24
90th percentile time to start treatment ⁵ (minutes)				115	93	96	99	92	84

(†) Data points are not shown in graphs for quarters when patient numbers are too small.

(‡) Caution is advised when interpreting abrupt changes over time at the hospital level. For example, performance before and after transition to a new information system is not directly comparable. For more information, see Background Paper: Approaches to reporting time measures of emergency department performance, December 2011.

(§) Quarterly information for this hospital is shown where data are available from the Health Information Exchange, NSW Health. For more information, see Background Paper: Approaches to reporting time measures of emergency department performance, December 2011.

Moruya District Hospital: Time patients waited to start treatment, triage 5

April to June 2018

Triage 5 Non-urgent (e.g. small cuts or abrasions)

Number of triage 5 patients: 219

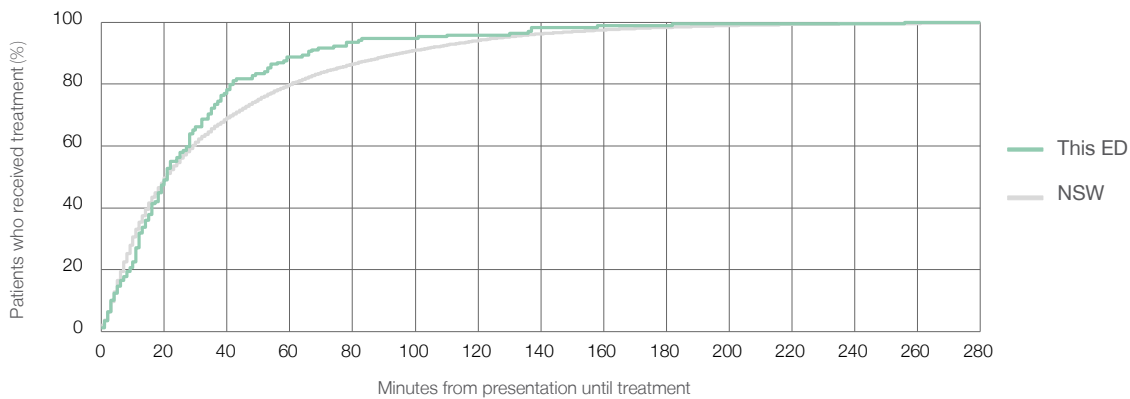
Number of triage 5 patients used to calculate waiting time:³ 169

Median time to start treatment⁴ 21 minutes

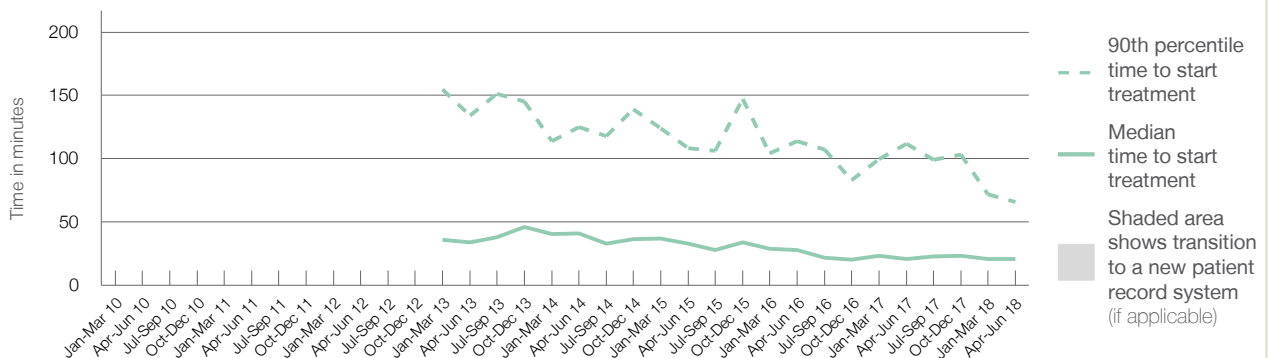
90th percentile time to start treatment⁵ 66 minutes

Same period last year	NSW (this period)
329	251
21 minutes	21 minutes
112 minutes	96 minutes

Percentage of triage 5 patients who received treatment by time, April to June 2018



Time patients waited to start treatment (minutes) for triage 5 patients, January 2010 to June 2018^{†§}



	Apr-Jun 2010	Apr-Jun 2011	Apr-Jun 2012	Apr-Jun 2013	Apr-Jun 2014	Apr-Jun 2015	Apr-Jun 2016	Apr-Jun 2017	Apr-Jun 2018
Median time to start treatment ⁴ (minutes)				34	41	33	28	21	21
90th percentile time to start treatment ⁵ (minutes)				134	125	108	114	112	66

(†) Data points are not shown in graphs for quarters when patient numbers are too small.

(‡) Caution is advised when interpreting abrupt changes over time at the hospital level. For example, performance before and after transition to a new information system is not directly comparable. For more information, see Background Paper: Approaches to reporting time measures of emergency department performance, December 2011.

(§) Quarterly information for this hospital is shown where data are available from the Health Information Exchange, NSW Health. For more information, see Background Paper: Approaches to reporting time measures of emergency department performance, December 2011.

Moruya District Hospital: Time patients spent in the ED

April to June 2018

All presentations:¹ 2,553 patients

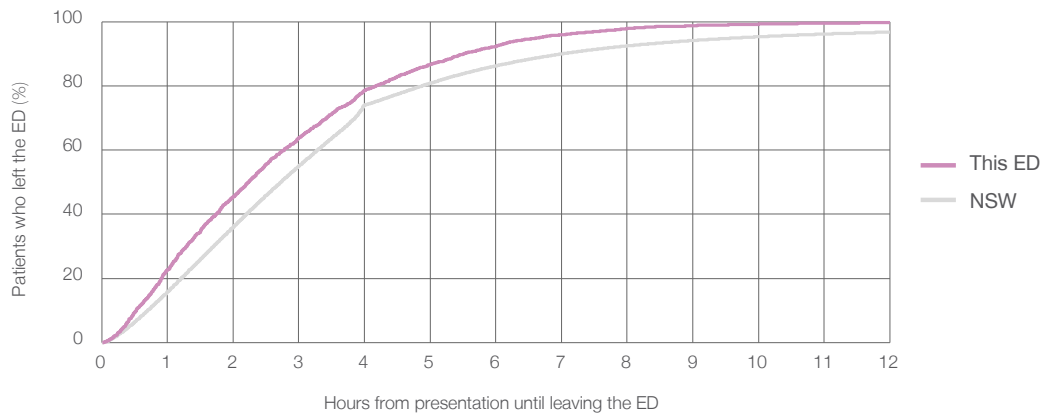
Presentations used to calculate time to leaving the ED:⁶ 2,553 patients

Median time spent in the ED⁸ 2 hours and 14 minutes

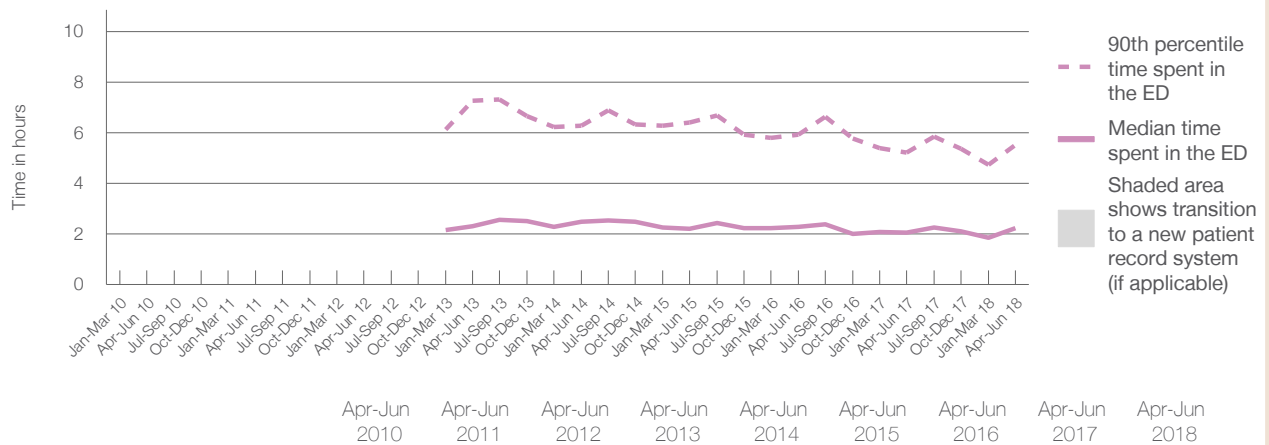
90th percentile time spent in the ED⁹ 5 hours and 31 minutes

Same period last year	NSW (this period)
2,536	2,536
2 hours and 4 minutes	2 hours and 44 minutes
5 hours and 13 minutes	7 hours and 1 minutes

Percentage of patients who left the ED by time, April to June 2018



Time patients spent in the ED, by quarter, January 2010 to June 2018^{†‡§}



	Apr-Jun 2010	Apr-Jun 2011	Apr-Jun 2012	Apr-Jun 2013	Apr-Jun 2014	Apr-Jun 2015	Apr-Jun 2016	Apr-Jun 2017	Apr-Jun 2018
Median time spent in the ED ⁸ (hours, minutes)				2h 18m	2h 29m	2h 13m	2h 17m	2h 4m	2h 14m
90th percentile time spent in the ED ⁹ (hours, minutes)				7h 16m	6h 17m	6h 24m	5h 55m	5h 13m	5h 31m

(†) Data points are not shown in graphs for quarters when patient numbers are too small.

(‡) Caution is advised when interpreting abrupt changes over time at the hospital level. For example, performance before and after transition to a new information system is not directly comparable. For more information, see Background Paper: Approaches to reporting time measures of emergency department performance, December 2011.

(§) Quarterly information for this hospital is shown where data are available from the Health Information Exchange, NSW Health. For more information, see Background Paper: Approaches to reporting time measures of emergency department performance, December 2011.

Moruya District Hospital: Time patients spent in the ED
By mode of separation
April to June 2018

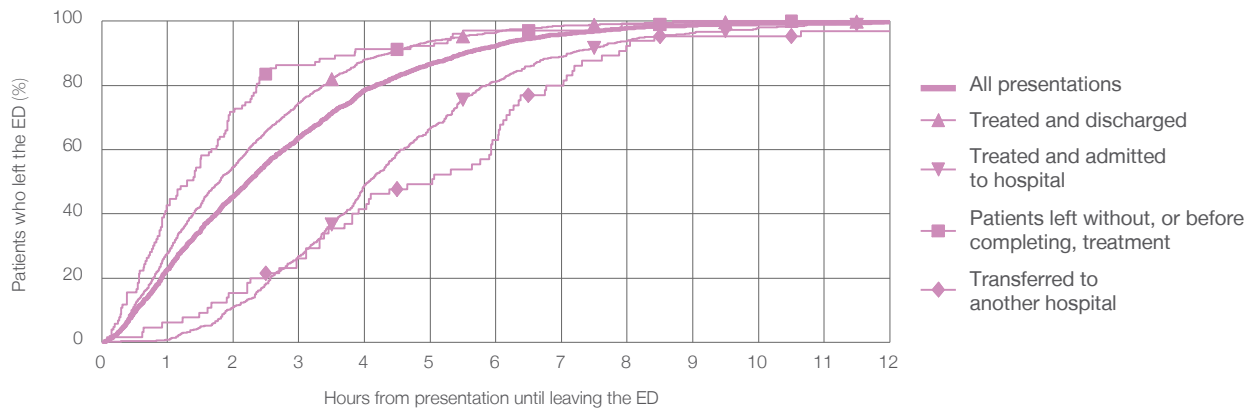
All presentations:¹ 2,553 patients

Presentations used to calculate time to leaving the ED:⁶ 2,553 patients

Treated and discharged	1,756 (68.8%)
Treated and admitted to hospital	555 (21.7%)
Patient left without, or before completing, treatment	103 (4.0%)
Transferred to another hospital	65 (2.5%)
Other	74 (2.9%)

Same period last year	Change since one year ago
2,536	1%
1,837	-4.4%
481	15.4%
75	37.3%
78	-16.7%
65	13.8%

Percentage of patients who left the ED by time and mode of separation, April to June 2018 ^{††§}



1 hour 2 hours 3 hours 4 hours 6 hours 8 hours 10 hours 12 hours

Treated and discharged	27.7%	54.6%	74.5%	88.1%	96.5%	99.3%	99.8%	99.9%
Treated and admitted to hospital	0.7%	11.0%	26.8%	49.0%	81.1%	93.9%	98.0%	99.5%
Patient left without, or before completing, treatment	42.7%	71.8%	86.4%	91.3%	97.1%	99.0%	100%	100%
Transferred to another hospital	6.2%	15.4%	26.2%	41.5%	63.1%	92.3%	95.4%	96.9%
All presentations	22.6%	45.5%	63.8%	78.7%	92.3%	97.8%	99.3%	99.7%

(†) Data points are not shown in graphs for quarters when patient numbers are too small.

(††) Caution is advised when interpreting abrupt changes over time at the hospital level. For example, performance before and after transition to a new information system is not directly comparable. For more information, see Background Paper: Approaches to reporting time measures of emergency department performance, December 2011.

(§) Quarterly information for this hospital is shown where data are available from the Health Information Exchange, NSW Health. For more information, see Background Paper: Approaches to reporting time measures of emergency department performance, December 2011.

Moruya District Hospital: Time spent in the ED
 Percentage of patients who spent four hours or less in the ED
 April to June 2018

All presentations at the emergency department: ¹ 2,553 patients

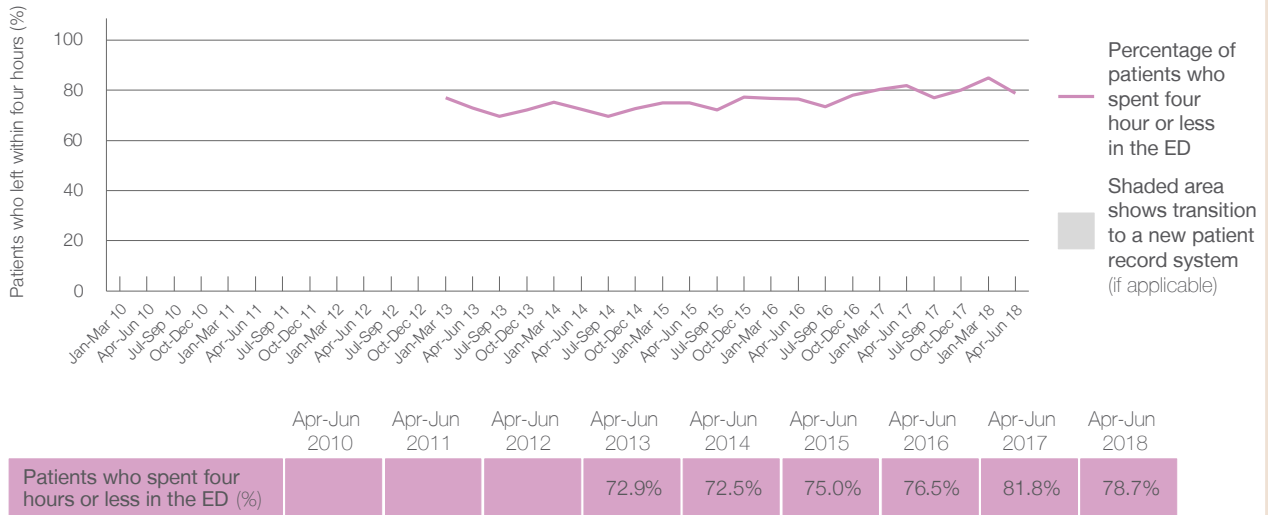
Presentations used to calculate time to leaving the ED: ⁶ 2,553 patients

Percentage of patients who spent four hours or less in the ED



	Same period last year	Change since one year ago
All presentations at the emergency department: ¹ 2,553 patients	2,536	1%
Presentations used to calculate time to leaving the ED: ⁶ 2,553 patients	2,536	1%
Percentage of patients who spent four hours or less in the ED	81.8%	

Percentage of patients who spent four hours or less in the ED, by quarter, January 2010 to June 2018 ^{†‡§}



* Suppressed due to small numbers and to protect privacy. Relevant graphs are also suppressed.
 † Data points are not shown in graphs for quarters when patient numbers were too small.
 ‡ Caution is advised when interpreting abrupt changes over time at the hospital level. For example, performance before and after transition to a new information system is not directly comparable. For more information see *Background Paper: Approaches to reporting time measures of emergency department performance, December 2011*.
 § Quarterly information for this hospital is shown where data are available from the Health Information Exchange, NSW Health. For more information, see *Background Paper: Approaches to reporting time measures of emergency department performance, December 2011*.

- All emergency and non-emergency presentations at the emergency department (ED).
- All presentations that have a triage category and are coded as emergency presentations or unplanned return visits.
- Some patients are excluded from ED time measures due to calculation requirements. For details, see the *Technical Supplement: Emergency department measures, January to March 2018*.
- The median is the time by which half of patients started treatment. The other half of patients took equal to or longer than this time.
- The 90th percentile is the time by which 90% of patients started treatment. The final 10% of patients took equal to or longer than this time.
- All presentations that have a departure time.
- Transfer of care time refers to the period between arrival of patients at the ED by ambulance and the transfer of responsibility for their care from paramedics to ED staff in an ED treatment zone. For more information see *Spotlight on Measurement: measuring transfer of care from the ambulance to the emergency department*.
- The median is the time by which half of patients left the ED. The other half of patients took equal to or longer than this time.
- The 90th percentile is the time by which 90% of patients left the ED. The final 10% of patients took equal to or longer than this time.

Note: Presentation time is the earlier of times recorded for the start of clerical registration or the triage process.
 Treatment time is the earliest time recorded when a healthcare professional provides medical care that is relevant to the patient's presenting problems. For patients who were treated and discharged, departure time is the time when treatment was completed. For all other patients, departure time is the time when the patient actually left the ED.

Note: All percentages are rounded and therefore percentages may not add to 100%.

Sources: ED data from Health Information Exchange, NSW Health (extracted 18 July 2018).
 Transfer of care data from Transfer of Care Reporting System (extracted 18 July 2018).