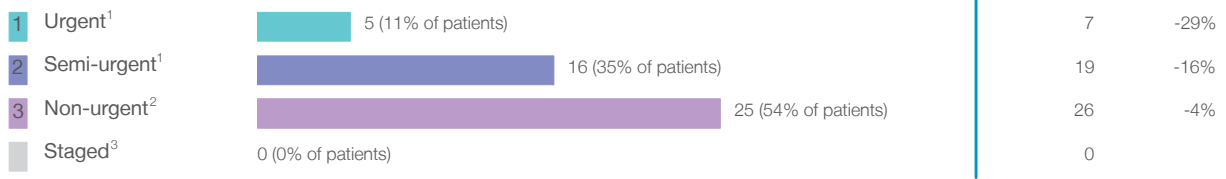


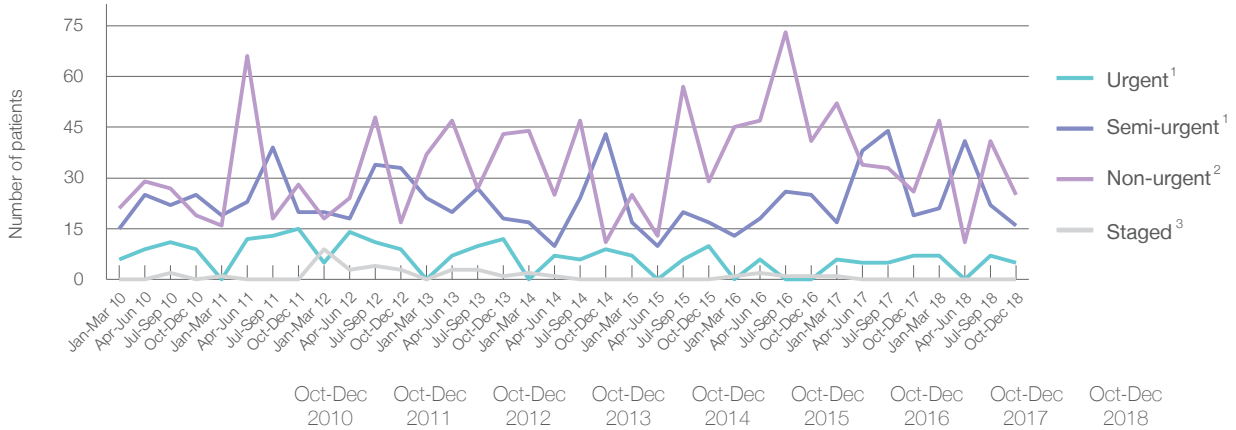
Inverell Hospital: Elective surgery performed

October to December 2018

Patients who received elective surgery by urgency category: 46 patients



Patients who received elective surgery by urgency category by quarter, January 2010 to December 2018



	Oct-Dec 2010	Oct-Dec 2011	Oct-Dec 2012	Oct-Dec 2013	Oct-Dec 2014	Oct-Dec 2015	Oct-Dec 2016	Oct-Dec 2017	Oct-Dec 2018
All categories	53	63	62	74	63	56	67	52	46
Urgent ¹	9	15	9	12	9	10	< 5	7	5
Semi-urgent ¹	25	20	33	18	43	17	25	19	16
Non-urgent ²	19	28	17	43	11	29	41	26	25
Staged ³	0	0	3	1	0	0	0	1	0

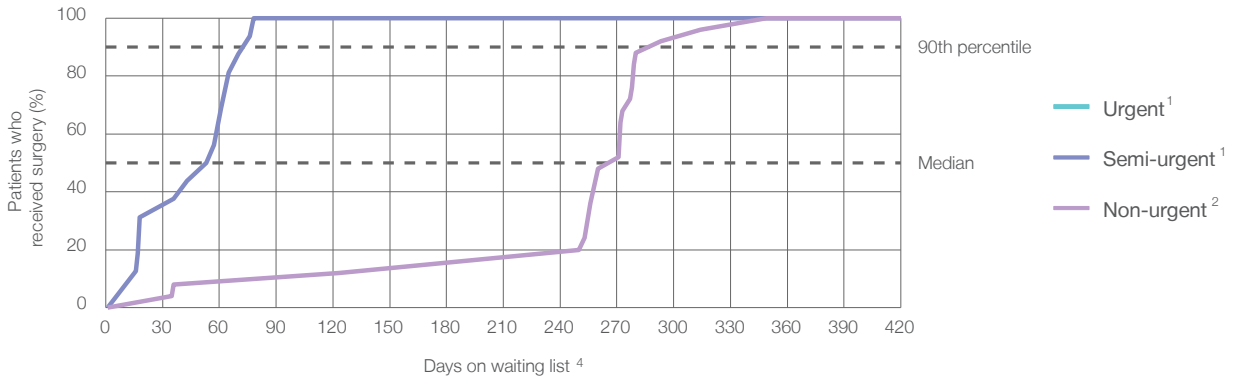
Inverell Hospital: Time waited to receive elective surgery

October to December 2018

Percentage of patients who received surgery within the clinically recommended timeframe

	Recommended: (days)	Percentage	Same period last year	Peer group (this period)
1 Urgent¹	30 days	*	*	100%
2 Semi-urgent¹	90 days	100%	100%	99.7%
3 Non-urgent²	365 days	100%	100%	99.2%

Percentage of patients who received elective surgery by waiting time (days)




Waiting time (days) for people who received surgery by urgency category

	Peer group (this period)	This hospital (same period last year)	Peer group (same period last year)
1 Urgent: ¹ 5 patients			
Median time to receive surgery	13	*	9
90th percentile time to receive surgery	26	*	26
2 Semi-urgent: ¹ 16 patients			
Median time to receive surgery	41	24	39
90th percentile time to receive surgery	77	*	77
3 Non-urgent: ² 25 patients			
Median time to receive surgery	136	272	147
90th percentile time to receive surgery	316	*	308

Inverell Hospital: Time waited to receive elective surgery

October to December 2018

Median ⁵ waiting time (days) for patients who received elective surgery by specialty of surgeon		Same period last year	Peer group (this period)
Cardiothoracic surgery	n/a (0 patients)	n/a	n/a
Ear, nose and throat surgery	n/a (0 patients)	n/a	202
General surgery	* (9 patients)	19	36
Gynaecology	* (6 patients)	*	37
Medical	* (< 5 patients)	*	26
Neurosurgery	n/a (0 patients)	n/a	n/a
Ophthalmology	 260 days (29 patients)	258	136
Orthopaedic surgery	n/a (0 patients)	n/a	107
Plastic surgery	n/a (0 patients)	n/a	n/a
Urology	n/a (0 patients)	n/a	33
Vascular surgery	n/a (0 patients)	n/a	237

Median ⁵ waiting time (days) for patients who received elective surgery by common procedures ⁷		Same period last year	Peer group (this period)
Abdominal hysterectomy	n/a (0 patients)	n/a	69
Cataract extraction	 260 days (29 patients)	258	161
Cholecystectomy	n/a (0 patients)	n/a	49
Coronary artery bypass graft	n/a (0 patients)	n/a	n/a
Cystoscopy	n/a (0 patients)	n/a	31
Haemorrhoidectomy	* (< 5 patients)	n/a	45
Hysteroscopy	n/a (0 patients)	*	33
Inguinal herniorrhaphy	n/a (0 patients)	n/a	66
Myringoplasty / Tympanoplasty	n/a (0 patients)	n/a	*
Myringotomy	n/a (0 patients)	n/a	*
Other - General	n/a (0 patients)	n/a	25
Prostatectomy	n/a (0 patients)	n/a	79
Septoplasty	n/a (0 patients)	n/a	282
Tonsillectomy	n/a (0 patients)	n/a	260
Total hip replacement	n/a (0 patients)	n/a	n/a
Total knee replacement	n/a (0 patients)	n/a	n/a
Varicose veins stripping and ligation	n/a (0 patients)	n/a	234

Inverell Hospital: Elective surgery waiting list

October to December 2018

Patients ready for surgery on waiting list at start of quarter: 112 patients

Patients ready for surgery on waiting list at end of quarter: 132 patients

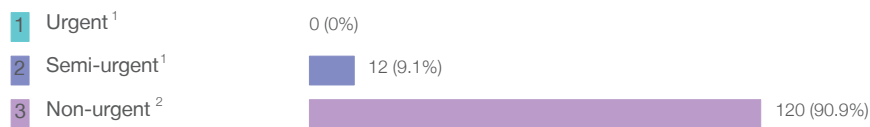
Patients not ready for surgery⁸ on waiting list at end of quarter: 3 patients

	Same period last year	Change since one year ago
Patients ready for surgery on waiting list at start of quarter	103	9%
Patients ready for surgery on waiting list at end of quarter	96	38%
Patients not ready for surgery ⁸ on waiting list at end of quarter	9	-67%

Inverell Hospital: Patients ready for elective surgery

as at 31st December 2018

Patients ready for surgery on waiting list by urgency category: 132 patients



	Same period last year	Change since one year ago
Urgent ¹	< 5	*
Semi-urgent ¹	14	-8%
Non-urgent ²	82	46%

Inverell Hospital: Patients ready for elective surgery

as at 31st December 2018

Patients ready for elective surgery by specialty of surgeon: 132 patients

	As at 31 Dec 2018	Same time last year	Change since one year ago
All specialties	132	96	38%
Cardiothoracic surgery	0	0	n/a
Ear, nose and throat surgery	0	0	n/a
General surgery	< 5	< 5	*
Gynaecology	< 5	< 5	*
Medical	< 5	0	n/a
Neurosurgery	0	0	n/a
Ophthalmology	124	91	36%
Orthopaedic surgery	0	0	n/a
Plastic surgery	0	0	n/a
Urology	0	0	n/a
Vascular surgery	0	0	n/a

Patients ready for elective surgery for common procedures ⁷

	As at 31 Dec 2018	Same time last year	Change since one year ago
Abdominal hysterectomy	0	< 5	n/a
Cataract extraction	124	91	36%
Cholecystectomy	0	< 5	n/a
Coronary artery bypass graft	0	< 5	n/a
Cystoscopy	0	< 5	n/a
Haemorrhoidectomy	0	< 5	n/a
Hysteroscopy	< 5	< 5	n/a
Inguinal herniorrhaphy	0	< 5	*
Myringoplasty / Tympanoplasty	0	< 5	n/a
Myringotomy	0	< 5	n/a
Other - General	< 5	< 5	*
Prostatectomy	0	< 5	n/a
Septoplasty	0	< 5	n/a
Tonsillectomy	0	< 5	n/a
Total hip replacement	0	< 5	n/a
Total knee replacement	0	< 5	n/a
Varicose veins stripping and ligation	0	< 5	n/a

Inverell Hospital: Patients ready for elective surgery
as at 31st December 2018

Patients ready for elective surgery, on the waiting list for longer than 12 months

	As at 31 Dec 2018	Same time last year
All specialties	0	0

* Suppressed due to small numbers and to protect privacy. Relevant graphs are also suppressed.

< 5 Less than five patients. For measures by urgency category, counts are included in an adjacent category. Relevant graphs are also suppressed.

1. Excluding staged procedures.
2. Excluding staged procedures and cystoscopy.
3. Including non-urgent cystoscopy.
4. Excludes the total number of days the patient was coded as 'not ready for surgery'.
5. This is the number of days it took for half of patients who received elective surgery during the period to be admitted and receive their surgery. The other half took equal to or longer than the median to be admitted for surgery.
6. This is the number of days it took for 90% of patients who received elective surgery during the period to be admitted and receive their surgery. The final 10% of patients took equal to or longer than the 90th percentile.
7. The procedures included in this list are procedures which are high volume; some may be associated with long waiting periods. For a description of these procedures see *Elective Surgery Glossary of Common Procedures, December 2012*.
8. Includes staged procedures, non-urgent cystoscopy, and patients currently not available for personal reasons.

For more information: For details of methods, see the *Technical Supplement: Emergency department, ambulance, admitted patients and elective surgery, October to December 2018*.

Note: All percentages rounded to whole numbers and therefore percentages may not add to 100%.

Source: Waiting List Collection On-Line System, NSW Health (extracted 21 January 2019.).