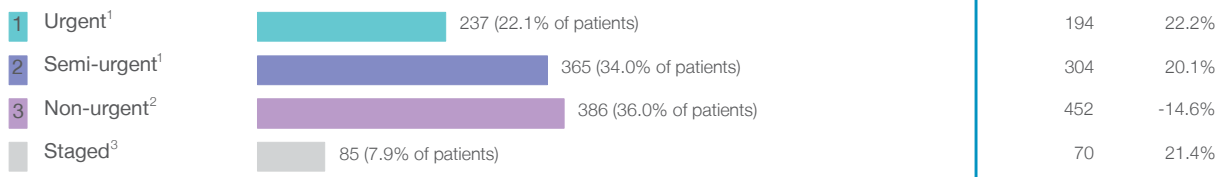


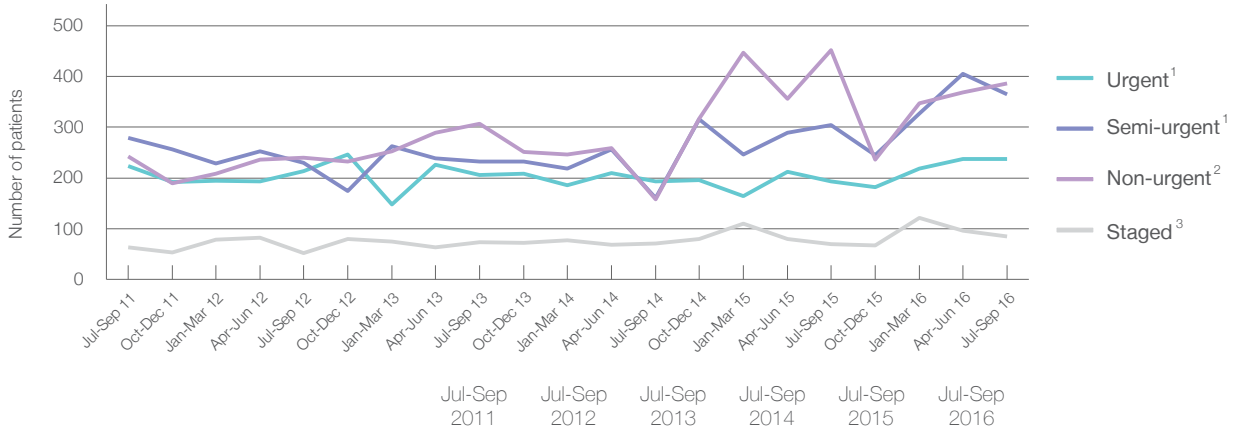
## Port Macquarie Base Hospital: Elective surgery performed

July to September 2016

Patients who received elective surgery by urgency category: 1,073 patients



Patients who received elective surgery by urgency category by quarter, July 2011 to September 2016



Urgency Category	Jul-Sep 2011	Jul-Sep 2012	Jul-Sep 2013	Jul-Sep 2014	Jul-Sep 2015	Jul-Sep 2016
All categories	807	735	819	583	1,020	1,073
Urgent <sup>1</sup>	223	213	206	194	194	237
Semi-urgent <sup>1</sup>	279	230	232	160	304	365
Non-urgent <sup>2</sup>	242	240	307	158	452	386
Staged <sup>3</sup>	63	52	74	71	70	85

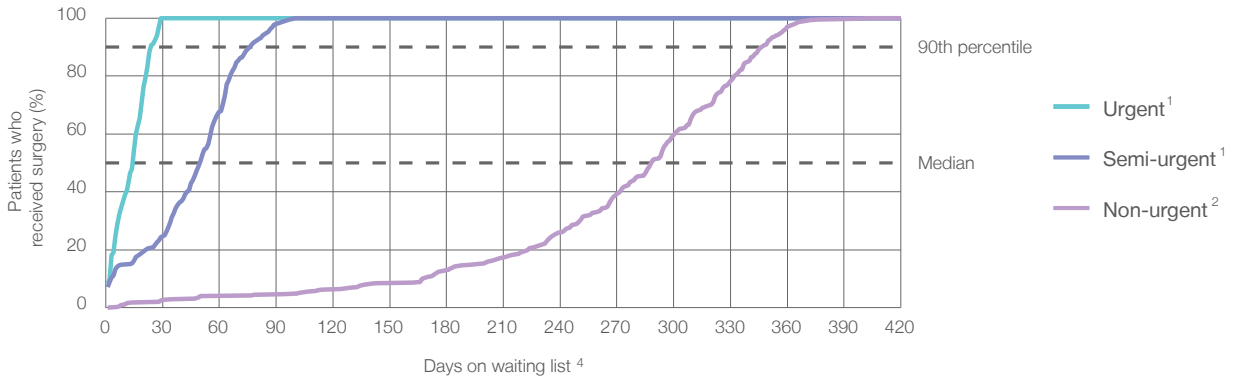
## Port Macquarie Base Hospital: Time waited to receive elective surgery

July to September 2016

Percentage of patients who received surgery within the clinically recommended timeframe

	Recommended: (days)	Percentage	Same period last year	Peer group (this period)
1 Urgent <sup>1</sup>	30 days	100%	100%	99.9%
2 Semi-urgent <sup>1</sup>	90 days	98.1%	100%	98.9%
3 Non-urgent <sup>2</sup>	365 days	97.9%	99.1%	96.6%

Percentage of patients who received elective surgery by waiting time (days)



Waiting time (days) for people who received surgery by urgency category

	Peer group (this period)	This hospital (same period last year)	Peer group (same period last year)
<b>1 Urgent:</b> <sup>1</sup> 237 patients			
Median time to receive surgery	12	15	13
90th percentile time to receive surgery	26	27	27
<b>2 Semi-urgent:</b> <sup>1</sup> 365 patients			
Median time to receive surgery	48	45	50
90th percentile time to receive surgery	82	71	84
<b>3 Non-urgent:</b> <sup>2</sup> 386 patients			
Median time to receive surgery	272	294	275
90th percentile time to receive surgery	356	342	361

## Port Macquarie Base Hospital: Time waited to receive elective surgery

July to September 2016

Median <sup>5</sup> waiting time (days) for patients who received elective surgery by specialty of surgeon		Same period last year	Peer group (this period)
Cardiothoracic surgery	n/a (0 patients)	n/a	*
Ear, nose and throat surgery	78 days (31 patients)	130	263
General surgery	36 days (223 patients)	30	49
Gynaecology	31 days (168 patients)	50	49
Medical	* (< 5 patients)	*	21
Neurosurgery	n/a (0 patients)	n/a	n/a
Ophthalmology	257 days (79 patients)	292	295
Orthopaedic surgery	274 days (228 patients)	303	224
Plastic surgery	n/a (0 patients)	n/a	69
Urology	57 days (243 patients)	45	46
Vascular surgery	19 days (97 patients)	22	20

Median <sup>5</sup> waiting time (days) for patients who received elective surgery by common procedures <sup>7</sup>		Same period last year	Peer group (this period)
Abdominal hysterectomy	63 days (14 patients)	*	76
Cataract extraction	265 days (59 patients)	295	299
Cholecystectomy	45 days (16 patients)	40	60
Coronary artery bypass graft	n/a (0 patients)	n/a	n/a
Cystoscopy	50 days (52 patients)	41	39
Haemorrhoidectomy	* (8 patients)	*	54
Hysteroscopy	22 days (72 patients)	27	34
Inguinal herniorrhaphy	286 days (23 patients)	264	93
Myringoplasty / Tympanoplasty	n/a (0 patients)	*	308
Myringotomy	n/a (0 patients)	n/a	36
Other - General	* (6 patients)	27	34
Prostatectomy	68 days (26 patients)	59	62
Septoplasty	* (< 5 patients)	114	318
Tonsillectomy	* (8 patients)	176	286
Total hip replacement	294 days (41 patients)	310	276
Total knee replacement	309 days (57 patients)	317	304
Varicose veins stripping and ligation	* (6 patients)	n/a	175

### Port Macquarie Base Hospital: Elective surgery waiting list

July to September 2016

Patients ready for surgery on waiting list at start of quarter: 1,430 patients

Patients ready for surgery on waiting list at end of quarter: 1,370 patients

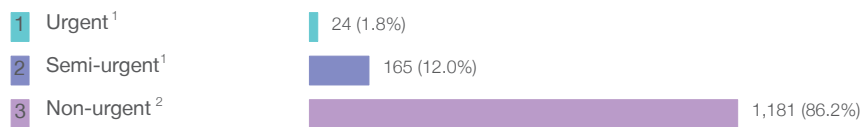
Patients not ready for surgery<sup>8</sup> on waiting list at end of quarter: 304 patients

	Same period last year	Change since one year ago
Patients ready for surgery on waiting list at start of quarter	1,236	15.7%
Patients ready for surgery on waiting list at end of quarter	1,076	27.3%
Patients not ready for surgery <sup>8</sup> on waiting list at end of quarter	378	-19.6%

### Port Macquarie Base Hospital: Patients ready for elective surgery

as at 30th September 2016

Patients ready for surgery on waiting list by urgency category: 1,370 patients



	Same period last year	Change since one year ago
Urgent <sup>1</sup>	28	-14.3%
Semi-urgent <sup>1</sup>	139	18.7%
Non-urgent <sup>2</sup>	909	29.9%

## Port Macquarie Base Hospital: Patients ready for elective surgery as at 30th September 2016

Patients ready for elective surgery by specialty of surgeon: 1,370 patients

	As at 30 Sep 2016	Same time last year	Change since one year ago
All specialties	1,370	1,076	27.3%
Cardiothoracic surgery	0	0	n/a
Ear, nose and throat surgery	109	14	678.6%
General surgery	151	151	0.0%
Gynaecology	111	104	6.7%
Medical	< 5	< 5	*
Neurosurgery	0	0	n/a
Ophthalmology	193	186	3.8%
Orthopaedic surgery	627	465	34.8%
Plastic surgery	0	0	n/a
Urology	159	132	20.5%
Vascular surgery	16	21	-23.8%

Patients ready for elective surgery for common procedures <sup>7</sup>

	As at 30 Sep 2016	Same time last year	Change since one year ago
Abdominal hysterectomy	14	13	7.7%
Cataract extraction	155	152	2.0%
Cholecystectomy	27	21	28.6%
Coronary artery bypass graft	0	< 5	n/a
Cystoscopy	13	17	-23.5%
Haemorrhoidectomy	7	< 5	*
Hysteroscopy	8	17	-52.9%
Inguinal herniorrhaphy	34	49	-30.6%
Myringoplasty / Tympanoplasty	< 5	< 5	n/a
Myringotomy	0	< 5	n/a
Other - General	< 5	< 5	*
Prostatectomy	46	50	-8.0%
Septoplasty	10	< 5	*
Tonsillectomy	75	9	733.3%
Total hip replacement	98	87	12.6%
Total knee replacement	232	167	38.9%
Varicose veins stripping and ligation	0	< 5	n/a

## Port Macquarie Base Hospital: Patients ready for elective surgery as at 30th September 2016

Patients ready for elective surgery, on the waiting list for longer than 12 months

As at 30 Sep 2016      Same time last year

	As at 30 Sep 2016	Same time last year
All specialties	< 5	0

\* Suppressed due to small numbers and to protect privacy. Relevant graphs are also suppressed.

< 5 Less than five patients. For measures by urgency category, counts are included in an adjacent category. Relevant graphs are also suppressed.

1. Excluding staged procedures.
2. Excluding staged procedures and cystoscopy.
3. Including non-urgent cystoscopy.
4. Excludes the total number of days the patient was coded as 'not ready for surgery'.
5. This is the number of days it took for half of patients who received elective surgery during the period to be admitted and receive their surgery. The other half took equal to or longer than the median to be admitted for surgery.
6. This is the number of days it took for 90% of patients who received elective surgery during the period to be admitted and receive their surgery. The final 10% of patients took equal to or longer than the 90th percentile.
7. The procedures included in this list are procedures which are high volume; some may be associated with long waiting periods. For a description of these procedures see *Elective Surgery Glossary of Common Procedures, December 2012*.
8. Includes staged procedures, non-urgent cystoscopy, and patients currently not available for personal reasons.

For more information: For details of methods, see the *Technical Supplement: Elective surgery measures, July to September 2016*.

**Note:** All percentages rounded to whole numbers and therefore percentages may not add to 100%.

**Source:** Waiting List Collection On-Line System, NSW Health (extracted 17 October 2016.).