

Fairfield Hospital: Emergency department (ED) overview

April to June 2018



All presentations:¹ 8,512 patients
 Emergency presentations:² 8,483 patients

Same period last year	Change since one year ago
8,905	-4%
8,878	-4%

Fairfield Hospital: Time patients waited to start treatment³

April to June 2018



Triage 2 Emergency (e.g. chest pain, severe burns): 909 patients

Median time to start treatment⁴  9 minutes
 90th percentile time to start treatment⁵  22 minutes



Triage 3 Urgent (e.g. moderate blood loss, dehydration): 3,203 patients

Median time to start treatment⁴  17 minutes
 90th percentile time to start treatment⁵  57 minutes

Triage 4 Semi-urgent (e.g. sprained ankle, earache): 3,644 patients

Median time to start treatment⁴  19 minutes
 90th percentile time to start treatment⁵  92 minutes

Triage 5 Non-urgent (e.g. small cuts or abrasions): 703 patients

Median time to start treatment⁴  19 minutes
 90th percentile time to start treatment⁵  93 minutes

Same period last year	NSW (this period)
919	
11 minutes	8 minutes
26 minutes	24 minutes
3,238	
20 minutes	19 minutes
76 minutes	63 minutes
4,093	
25 minutes	24 minutes
123 minutes	95 minutes
597	
23 minutes	21 minutes
129 minutes	96 minutes

Fairfield Hospital: Time from presentation until leaving the ED

April to June 2018

Attendances used to calculate time to leaving the ED:⁶ 8,512 patients

Percentage of patients who spent four hours or less in the ED  81%

Same period last year	Change since one year ago
8,904	-4%
73%	

* Suppressed due to small number of patients and to protect privacy. Relevant graphs are also suppressed.

- All emergency and non-emergency attendances at the emergency department (ED).
- All attendances that have a triage category and are coded as emergency presentations or unplanned return visits.
- Some patients are excluded from ED time measures due to calculation requirements. For details, see the *Technical Supplement: Emergency department measures, January to March 2018*.
- The median is the time by which half of patients started treatment. The other half of patients waited equal to or longer than this time.
- The 90th percentile is the time by which 90% of patients started treatment. The final 10% of patients waited equal to or longer than this time.
- All presentations that have a departure time.

Note: Presentation time is the earlier time recorded for clerical registration or the triage process. Treatment time is the earliest time recorded when a healthcare professional provides medical care relevant to the patient's presenting problems.

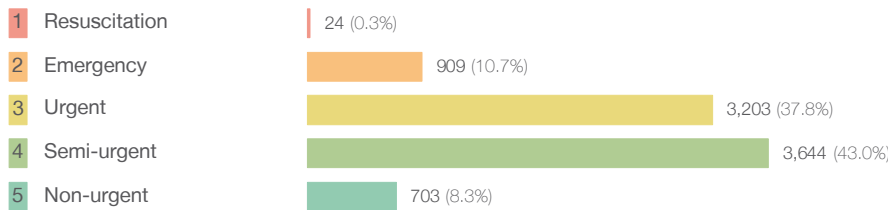
Source: Health Information Exchange, NSW Health (extracted 18 July 2018).

Fairfield Hospital: Patients presenting to the emergency department

April to June 2018

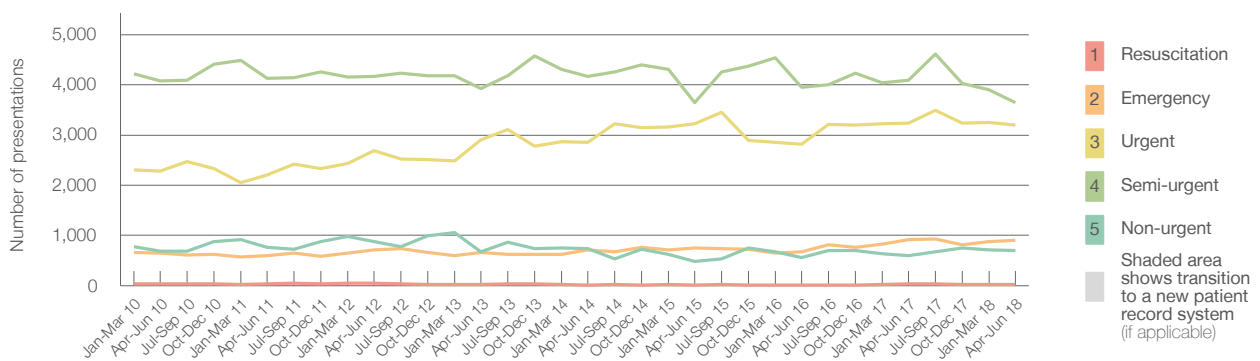
All presentations:¹ 8,512 patients

Emergency presentations² by triage category: 8,483 patients



Same period last year	Change since one year ago
8,905	-4%
8,878	-4%
31	-22.6%
919	-1.1%
3,238	-1.1%
4,093	-11.0%
597	17.8%

Emergency presentations² by quarter, January 2010 to June 2018 †



	Apr-Jun 2010	Apr-Jun 2011	Apr-Jun 2012	Apr-Jun 2013	Apr-Jun 2014	Apr-Jun 2015	Apr-Jun 2016	Apr-Jun 2017	Apr-Jun 2018
Resuscitation	33	33	55	29	14	17	14	31	24
Emergency	645	602	706	658	709	748	675	919	909
Urgent	2,280	2,206	2,685	2,907	2,860	3,219	2,811	3,238	3,203
Semi-urgent	4,078	4,131	4,173	3,924	4,166	3,649	3,947	4,093	3,644
Non-urgent	690	758	878	671	733	488	554	597	703
All emergency presentations	7,726	7,730	8,497	8,189	8,482	8,121	8,001	8,878	8,483

Fairfield Hospital: Patients arriving by ambulance

April to June 2018

Arrivals used to calculate transfer of care time:⁷ 1,668 patients

ED Transfer of care time



Same period last year	Change since one year ago
1,646	
13 minutes	-1 minute
32 minutes	-10 minutes

(†) Data points are not shown in graphs for quarters when patient numbers are too small.

(‡) Caution is advised when interpreting abrupt changes over time at the hospital level. For example, performance before and after transition to a new information system is not directly comparable. For more information, see Background Paper: Approaches to reporting time measures of emergency department performance, December 2011.

Fairfield Hospital: Time patients waited to start treatment, triage 2

April to June 2018

Triage 2 Emergency (e.g. chest pain, severe burns)

Number of triage 2 patients: 909

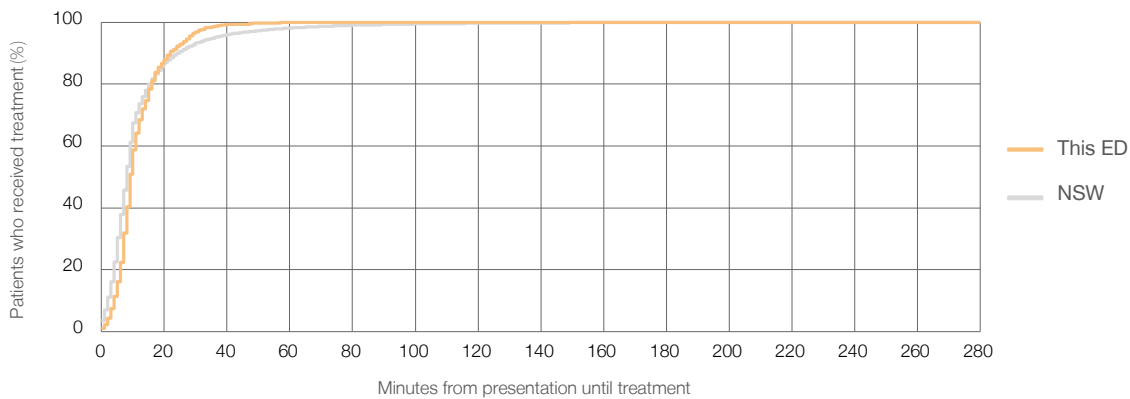
Number of triage 2 patients used to calculate waiting time:³ 908

Median time to start treatment⁴ 9 minutes

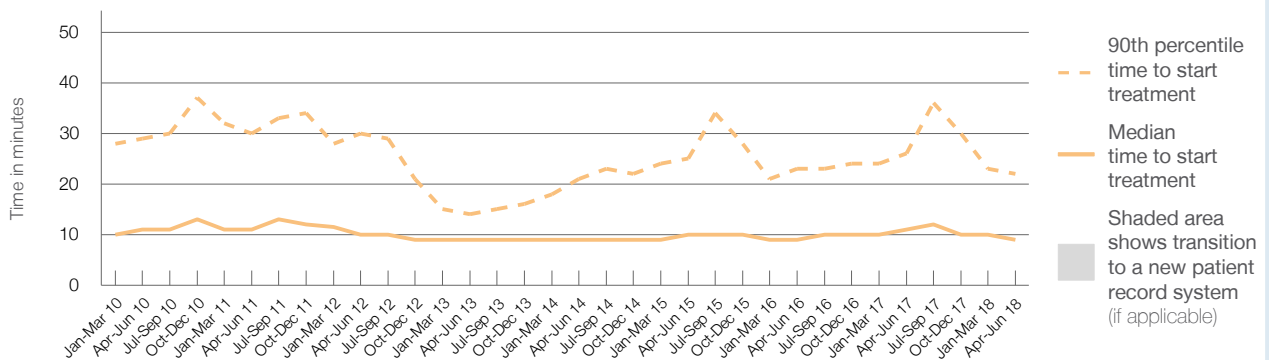
90th percentile time to start treatment⁵ 22 minutes

Same period last year	NSW (this period)
919	
917	
11 minutes	8 minutes
26 minutes	24 minutes

Percentage of triage 2 patients who received treatment by time, April to June 2018



Time patients waited to start treatment (minutes) for triage 2 patients, January 2010 to June 2018^{†‡}



	Apr-Jun 2010	Apr-Jun 2011	Apr-Jun 2012	Apr-Jun 2013	Apr-Jun 2014	Apr-Jun 2015	Apr-Jun 2016	Apr-Jun 2017	Apr-Jun 2018
Median time to start treatment ⁴ (minutes)	11	11	10	9	9	10	9	11	9
90th percentile time to start treatment ⁵ (minutes)	29	30	30	14	21	25	23	26	22

(†) Data points are not shown in graphs for quarters when patient numbers are too small.

(‡) Caution is advised when interpreting abrupt changes over time at the hospital level. For example, performance before and after transition to a new information system is not directly comparable. For more information, see Background Paper: Approaches to reporting time measures of emergency department performance, December 2011.

Fairfield Hospital: Time patients waited to start treatment, triage 3

April to June 2018

Triage 3 Urgent (e.g. moderate blood loss, dehydration)

Number of triage 3 patients: 3,203

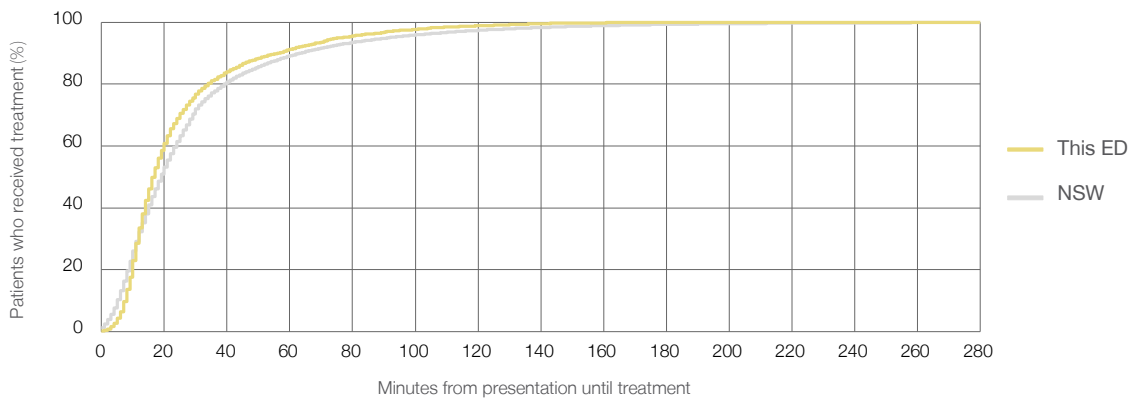
Number of triage 3 patients used to calculate waiting time:³ 3,151

Median time to start treatment⁴ 17 minutes

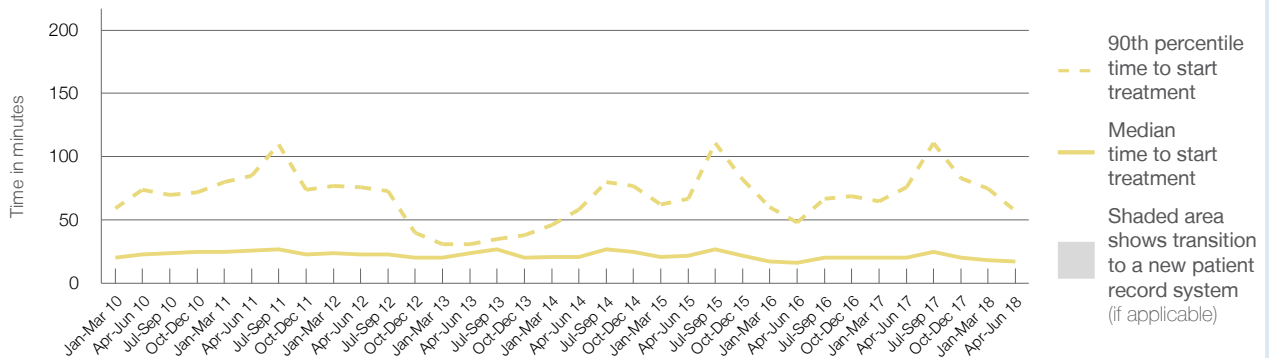
90th percentile time to start treatment⁵ 57 minutes

Same period last year	NSW (this period)
3,238	3,150
20 minutes	19 minutes
76 minutes	63 minutes

Percentage of triage 3 patients who received treatment by time, April to June 2018



Time patients waited to start treatment (minutes) for triage 3 patients, January 2010 to June 2018^{†‡}



	Apr-Jun 2010	Apr-Jun 2011	Apr-Jun 2012	Apr-Jun 2013	Apr-Jun 2014	Apr-Jun 2015	Apr-Jun 2016	Apr-Jun 2017	Apr-Jun 2018
Median time to start treatment ⁴ (minutes)	23	26	23	24	21	22	16	20	17
90th percentile time to start treatment ⁵ (minutes)	74	85	76	31	58	67	48	76	57

(†) Data points are not shown in graphs for quarters when patient numbers are too small.

(‡) Caution is advised when interpreting abrupt changes over time at the hospital level. For example, performance before and after transition to a new information system is not directly comparable. For more information, see Background Paper: Approaches to reporting time measures of emergency department performance, December 2011.

Fairfield Hospital: Time patients waited to start treatment, triage 4

April to June 2018

Triage 4 Semi-urgent (e.g. sprained ankle, earache)

Number of triage 4 patients: 3,644

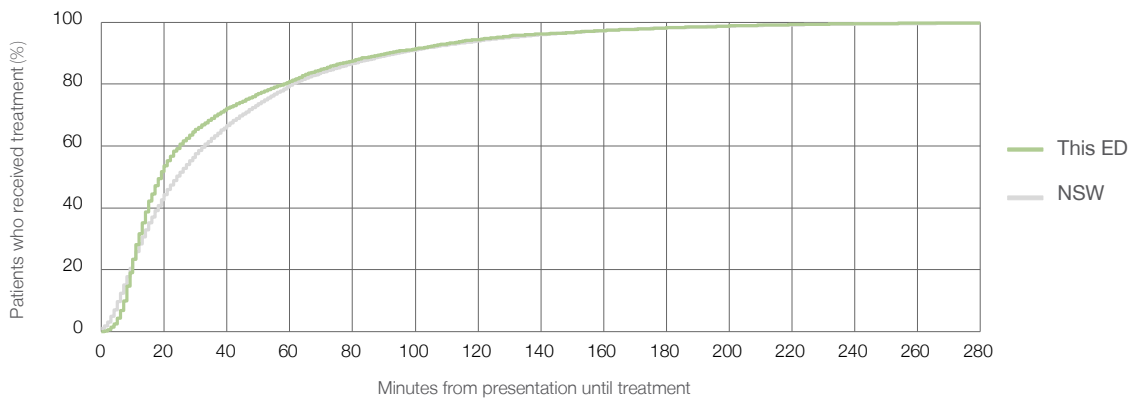
Number of triage 4 patients used to calculate waiting time:³ 3,427

Median time to start treatment⁴ 19 minutes

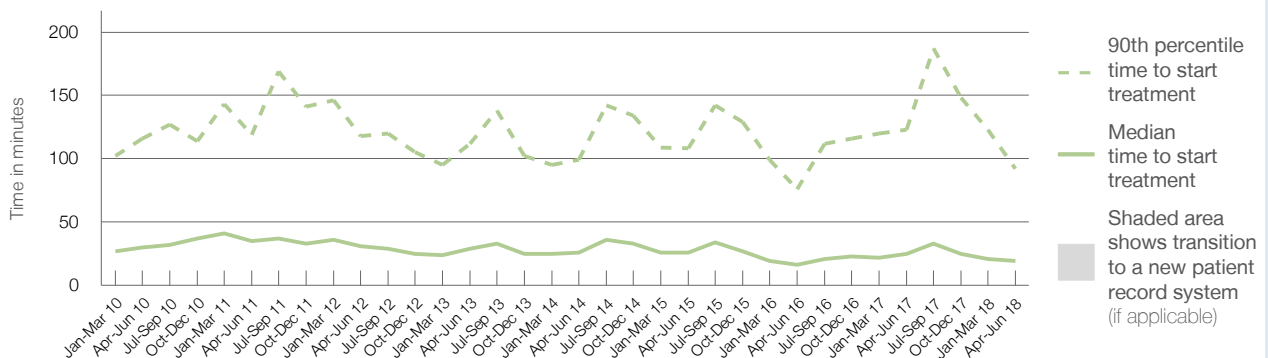
90th percentile time to start treatment⁵ 92 minutes

Same period last year	NSW (this period)
4,093	3,702
25 minutes	24 minutes
123 minutes	95 minutes

Percentage of triage 4 patients who received treatment by time, April to June 2018



Time patients waited to start treatment (minutes) for triage 4 patients, January 2010 to June 2018^{†‡}



	Apr-Jun 2010	Apr-Jun 2011	Apr-Jun 2012	Apr-Jun 2013	Apr-Jun 2014	Apr-Jun 2015	Apr-Jun 2016	Apr-Jun 2017	Apr-Jun 2018
Median time to start treatment ⁴ (minutes)	30	35	31	29	26	26	16	25	19
90th percentile time to start treatment ⁵ (minutes)	116	119	118	112	99	108	76	123	92

(†) Data points are not shown in graphs for quarters when patient numbers are too small.

(‡) Caution is advised when interpreting abrupt changes over time at the hospital level. For example, performance before and after transition to a new information system is not directly comparable. For more information, see Background Paper: Approaches to reporting time measures of emergency department performance, December 2011.

Fairfield Hospital: Time patients waited to start treatment, triage 5

April to June 2018

Triage 5 Non-urgent (e.g. small cuts or abrasions)

Number of triage 5 patients: 703

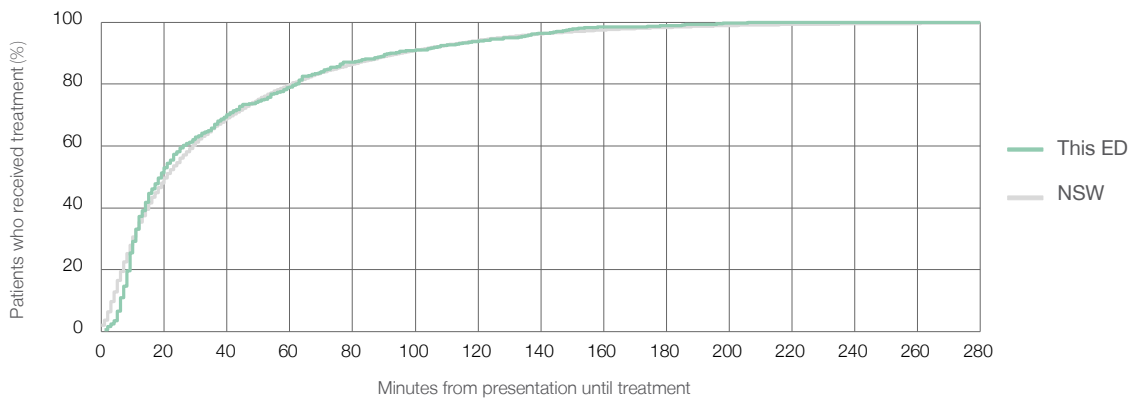
Number of triage 5 patients used to calculate waiting time:³ 554

Median time to start treatment⁴ 19 minutes

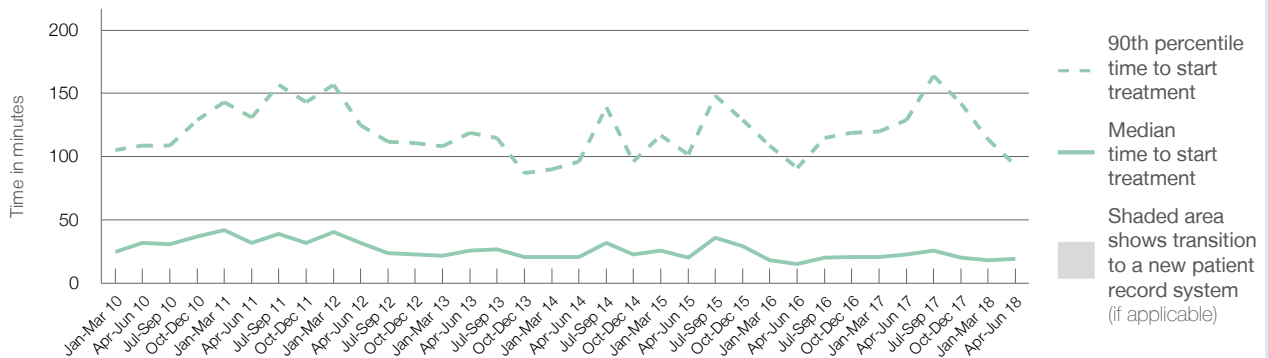
90th percentile time to start treatment⁵ 93 minutes

Same period last year	NSW (this period)
597	444
23 minutes	21 minutes
129 minutes	96 minutes

Percentage of triage 5 patients who received treatment by time, April to June 2018



Time patients waited to start treatment (minutes) for triage 5 patients, January 2010 to June 2018^{†‡}



	Apr-Jun 2010	Apr-Jun 2011	Apr-Jun 2012	Apr-Jun 2013	Apr-Jun 2014	Apr-Jun 2015	Apr-Jun 2016	Apr-Jun 2017	Apr-Jun 2018
Median time to start treatment ⁴ (minutes)	32	32	32	26	21	20	15	23	19
90th percentile time to start treatment ⁵ (minutes)	109	131	125	119	96	102	91	129	93

(†) Data points are not shown in graphs for quarters when patient numbers are too small.

(‡) Caution is advised when interpreting abrupt changes over time at the hospital level. For example, performance before and after transition to a new information system is not directly comparable. For more information, see Background Paper: Approaches to reporting time measures of emergency department performance, December 2011.

Fairfield Hospital: Time patients spent in the ED

April to June 2018

All presentations:¹ 8,512 patients

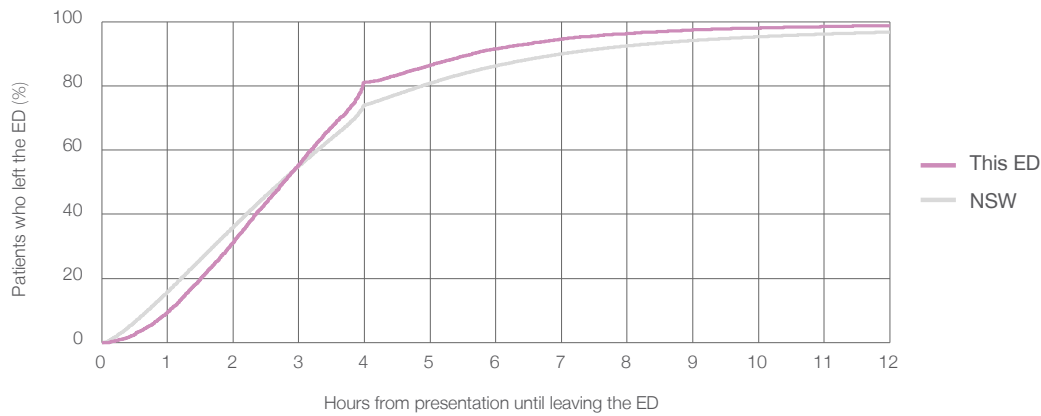
Presentations used to calculate time to leaving the ED:⁶ 8,512 patients

Median time spent in the ED⁸ 2 hours and 47 minutes

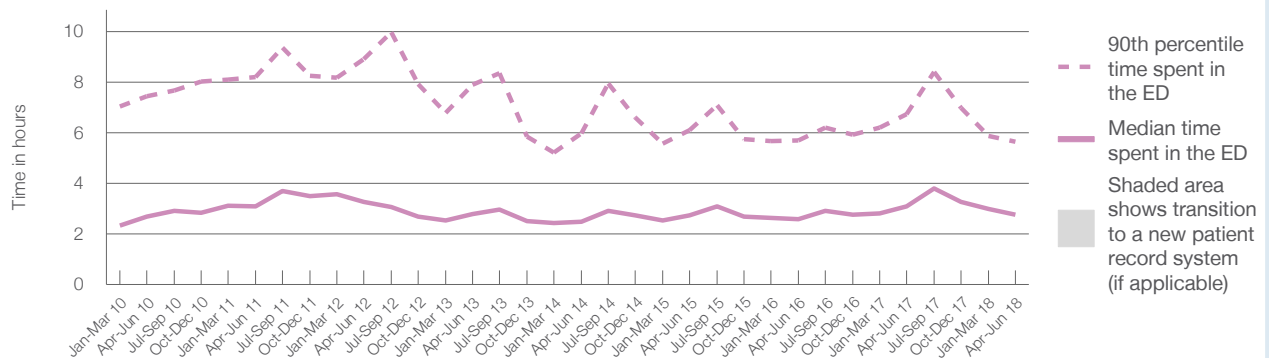
90th percentile time spent in the ED⁹ 5 hours and 39 minutes

Same period last year	NSW (this period)
8,905	
8,904	
3 hours and 5 minutes	2 hours and 44 minutes
6 hours and 44 minutes	7 hours and 1 minutes

Percentage of patients who left the ED by time, April to June 2018



Time patients spent in the ED, by quarter, January 2010 to June 2018^{†‡}



	Apr-Jun 2010	Apr-Jun 2011	Apr-Jun 2012	Apr-Jun 2013	Apr-Jun 2014	Apr-Jun 2015	Apr-Jun 2016	Apr-Jun 2017	Apr-Jun 2018
Median time spent in the ED ⁸ (hours, minutes)	2h 41m	3h 5m	3h 17m	2h 48m	2h 29m	2h 44m	2h 35m	3h 5m	2h 47m
90th percentile time spent in the ED ⁹ (hours, minutes)	7h 27m	8h 12m	8h 54m	7h 54m	5h 59m	6h 6m	5h 42m	6h 44m	5h 39m

(†) Data points are not shown in graphs for quarters when patient numbers are too small.

(‡) Caution is advised when interpreting abrupt changes over time at the hospital level. For example, performance before and after transition to a new information system is not directly comparable. For more information, see Background Paper: Approaches to reporting time measures of emergency department performance, December 2011.

Fairfield Hospital: Time patients spent in the ED
 By mode of separation
 April to June 2018

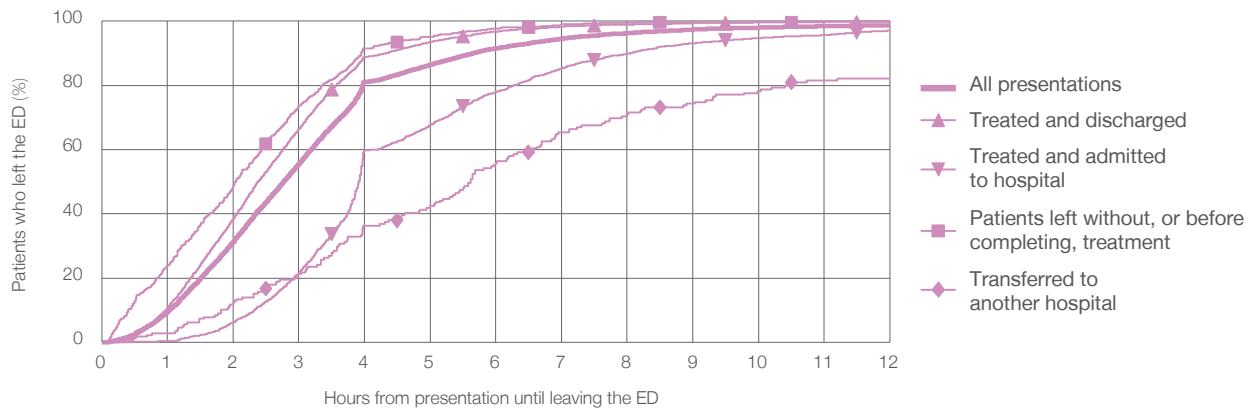
All presentations:¹ 8,512 patients

Presentations used to calculate time to leaving the ED:⁶ 8,512 patients

Treated and discharged	5,645 (66.3%)
Treated and admitted to hospital	2,024 (23.8%)
Patient left without, or before completing, treatment	605 (7.1%)
Transferred to another hospital	179 (2.1%)
Other	59 (0.7%)

Same period last year	Change since one year ago
8,904	-4%
5,667	-0.4%
2,099	-3.6%
895	-32.4%
187	-4.3%
57	3.5%

Percentage of patients who left the ED by time and mode of separation, April to June 2018^{††}



1 hour 2 hours 3 hours 4 hours 6 hours 8 hours 10 hours 12 hours

	1 hour	2 hours	3 hours	4 hours	6 hours	8 hours	10 hours	12 hours
Treated and discharged	10.8%	38.5%	66.4%	88.8%	96.8%	99.0%	99.6%	99.8%
Treated and admitted to hospital	0.4%	6.2%	21.6%	59.8%	77.9%	90.0%	94.7%	97.0%
Patient left without, or before completing, treatment	24.0%	48.9%	73.7%	91.6%	97.7%	99.5%	99.7%	99.8%
Transferred to another hospital	2.8%	12.3%	21.2%	36.3%	55.9%	70.9%	78.2%	82.1%
All presentations	9.6%	31.4%	55.5%	81.1%	91.5%	96.3%	98.0%	98.8%

(†) Data points are not shown in graphs for quarters when patient numbers are too small.

(‡) Caution is advised when interpreting abrupt changes over time at the hospital level. For example, performance before and after transition to a new information system is not directly comparable. For more information, see Background Paper: Approaches to reporting time measures of emergency department performance, December 2011.

Fairfield Hospital: Time spent in the ED
 Percentage of patients who spent four hours or less in the ED
 April to June 2018

All presentations at the emergency department: ¹ 8,512 patients

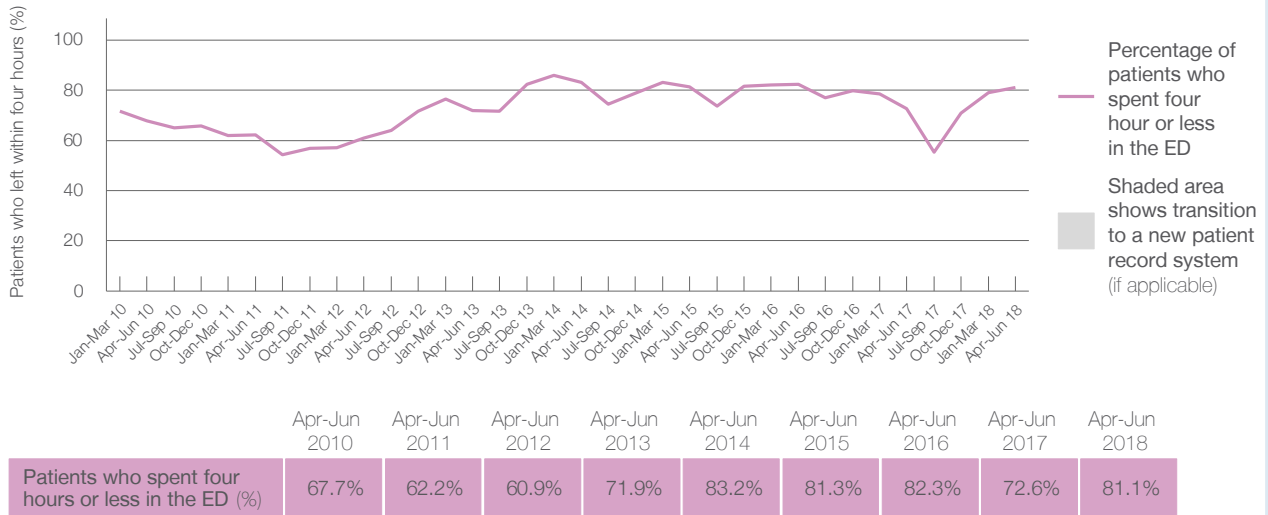
Presentations used to calculate time to leaving the ED: ⁶ 8,512 patients

Percentage of patients who spent four hours or less in the ED



	Same period last year	Change since one year ago
All presentations at the emergency department	8,905	-4%
Presentations used to calculate time to leaving the ED	8,904	-4%
Percentage of patients who spent four hours or less in the ED	72.6%	

Percentage of patients who spent four hours or less in the ED, by quarter, January 2010 to June 2018 ^{†‡}



* Suppressed due to small numbers and to protect privacy. Relevant graphs are also suppressed.

† Data points are not shown in graphs for quarters when patient numbers were too small.

‡ Caution is advised when interpreting abrupt changes over time at the hospital level. For example, performance before and after transition to a new information system is not directly comparable. For more information see *Background Paper: Approaches to reporting time measures of emergency department performance, December 2011*.

- All emergency and non-emergency presentations at the emergency department (ED).
- All presentations that have a triage category and are coded as emergency presentations or unplanned return visits.
- Some patients are excluded from ED time measures due to calculation requirements. For details, see the *Technical Supplement: Emergency department measures, January to March 2018*.
- The median is the time by which half of patients started treatment. The other half of patients took equal to or longer than this time.
- The 90th percentile is the time by which 90% of patients started treatment. The final 10% of patients took equal to or longer than this time.
- All presentations that have a departure time.
- Transfer of care time refers to the period between arrival of patients at the ED by ambulance and the transfer of responsibility for their care from paramedics to ED staff in an ED treatment zone. For more information see *Spotlight on Measurement: measuring transfer of care from the ambulance to the emergency department*.
- The median is the time by which half of patients left the ED. The other half of patients took equal to or longer than this time.
- The 90th percentile is the time by which 90% of patients left the ED. The final 10% of patients took equal to or longer than this time.

Note: Presentation time is the earlier of times recorded for the start of clerical registration or the triage process. Treatment time is the earliest time recorded when a healthcare professional provides medical care that is relevant to the patient's presenting problems. For patients who were treated and discharged, departure time is the time when treatment was completed. For all other patients, departure time is the time when the patient actually left the ED.

Note: All percentages are rounded and therefore percentages may not add to 100%.

Sources: ED data from Health Information Exchange, NSW Health (extracted 18 July 2018).
 Transfer of care data from Transfer of Care Reporting System (extracted 18 July 2018).