

Moruya District Hospital: Emergency department (ED) overview

April to June 2017

All presentations:¹ 2,536 patients
 Emergency presentations:² 2,352 patients

Same period last year	Change since one year ago
2,325	9.1%
2,177	8.0%

Moruya District Hospital: Time patients waited to start treatment³

April to June 2017

Triage 2 Emergency (e.g. chest pain, severe burns): 312 patients

Median time to start treatment⁴ 7 minutes
 90th percentile time to start treatment⁵ 23 minutes

Triage 3 Urgent (e.g. moderate blood loss, dehydration): 830 patients

Median time to start treatment⁴ 17 minutes
 90th percentile time to start treatment⁵ 60 minutes

Triage 4 Semi-urgent (e.g. sprained ankle, earache): 867 patients

Median time to start treatment⁴ 23 minutes
 90th percentile time to start treatment⁵ 92 minutes

Triage 5 Non-urgent (e.g. small cuts or abrasions): 329 patients

Median time to start treatment⁴ 21 minutes
 90th percentile time to start treatment⁵ 112 minutes

Same period last year	NSW (this period)
252	
8 minutes	8 minutes
35 minutes	26 minutes
699	
18 minutes	20 minutes
57 minutes	67 minutes
875	
26 minutes	25 minutes
99 minutes	99 minutes
334	
28 minutes	23 minutes
114 minutes	101 minutes

Moruya District Hospital: Time from presentation until leaving the ED

April to June 2017

Attendances used to calculate time to leaving the ED:⁶ 2,536 patients

Percentage of patients who spent four hours or less in the ED 81.8%

Same period last year	Change since one year ago
2,325	9.1%
76.5%	

* Suppressed due to small number of patients and to protect privacy. Relevant graphs are also suppressed.

- All emergency and non-emergency attendances at the emergency department (ED).
- All attendances that have a triage category and are coded as emergency presentations or unplanned return visits.
- Some patients are excluded from ED time measures due to calculation requirements. For details, see the *Technical Supplement: Emergency department measures, July to September 2016*.
- The median is the time by which half of patients started treatment. The other half of patients waited equal to or longer than this time.
- The 90th percentile is the time by which 90% of patients started treatment. The final 10% of patients waited equal to or longer than this time.
- All presentations that have a departure time.

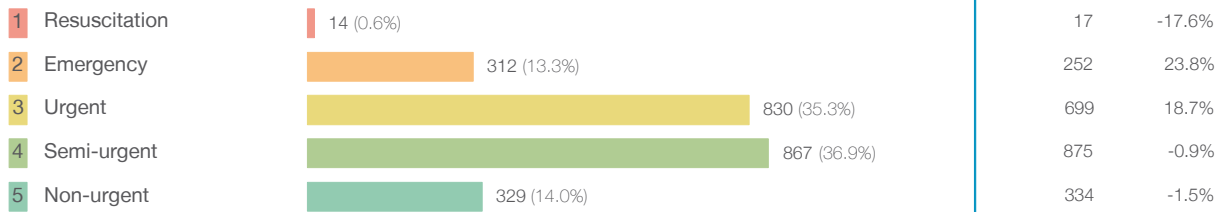
Note: Presentation time is the earlier time recorded for clerical registration or the triage process. Treatment time is the earliest time recorded when a healthcare professional provides medical care relevant to the patient's presenting problems.

Source: Health Information Exchange, NSW Health (extracted 21 July 2017).

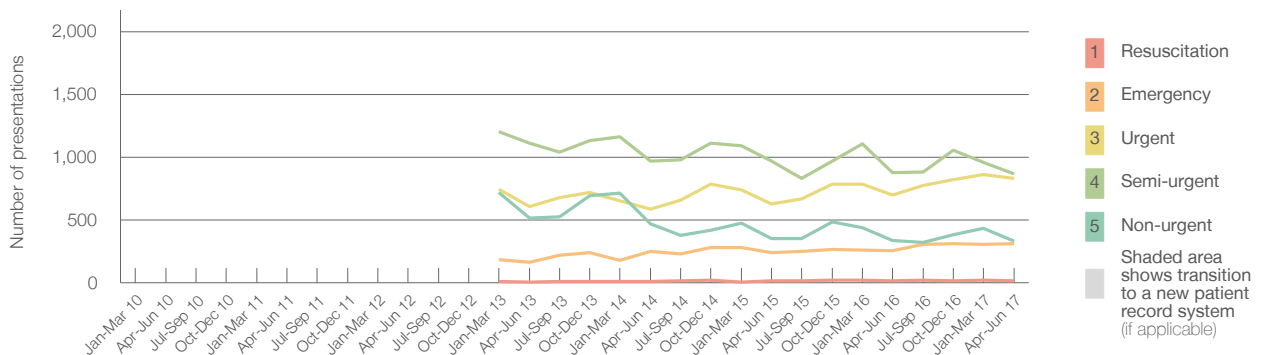
Moruya District Hospital: Patients presenting to the emergency department April to June 2017

All presentations:¹ 2,536 patients

Emergency presentations² by triage category: 2,352 patients



Emergency presentations² by quarter, April 2012 to June 2017 *§



	Apr-Jun 2010	Apr-Jun 2011	Apr-Jun 2012	Apr-Jun 2013	Apr-Jun 2014	Apr-Jun 2015	Apr-Jun 2016	Apr-Jun 2017
Resuscitation				5	8	13	17	14
Emergency				165	248	241	252	312
Urgent				608	586	626	699	830
Semi-urgent				1,109	968	970	875	867
Non-urgent				513	470	351	334	329
All emergency presentations				2,400	2,280	2,201	2,177	2,352

Moruya District Hospital: Patients arriving by ambulance April to June 2017

Arrivals used to calculate transfer of care time:⁷ 571 patients

ED Transfer of care time



- (†) Data points are not shown in graphs for quarters when patient numbers are too small.
- (‡) Caution is advised when interpreting abrupt changes over time at the hospital level. For example, performance before and after transition to a new information system is not directly comparable. For more information, see Background Paper: Approaches to reporting time measures of emergency department performance, December 2011.
- (§) Quarterly information for this hospital is shown where data are available from the Health Information Exchange, NSW Health. For more information, see Background Paper: Approaches to reporting time measures of emergency department performance, December 2011.

Moruya District Hospital: Time patients waited to start treatment, triage 2

April to June 2017

Triage 2 Emergency (e.g. chest pain, severe burns)

Number of triage 2 patients: 312

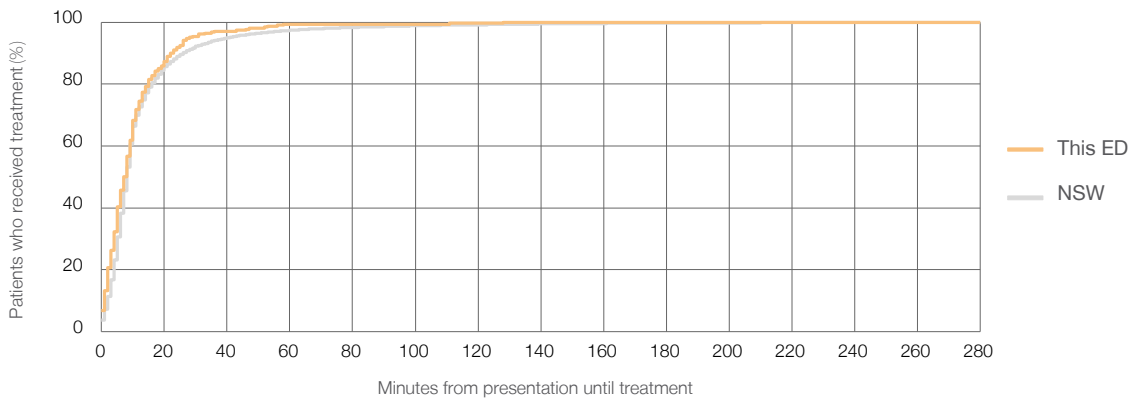
Number of triage 2 patients used to calculate waiting time:³ 309

Median time to start treatment⁴ 7 minutes

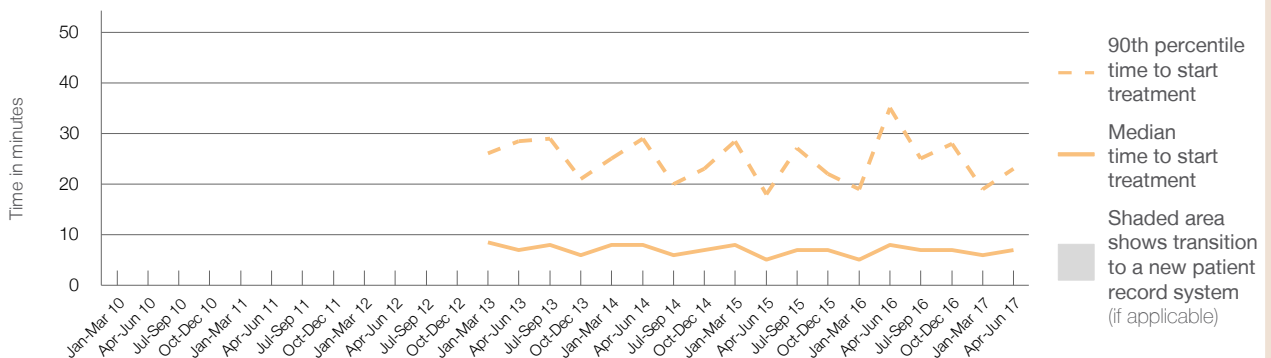
90th percentile time to start treatment⁵ 23 minutes

Same period last year	NSW (this period)
252	
251	
8 minutes	8 minutes
35 minutes	26 minutes

Percentage of triage 2 patients who received treatment by time, April to June 2017



Time patients waited to start treatment (minutes) for triage 2 patients, April 2012 to June 2017^{†‡§}



	Apr-Jun 2010	Apr-Jun 2011	Apr-Jun 2012	Apr-Jun 2013	Apr-Jun 2014	Apr-Jun 2015	Apr-Jun 2016	Apr-Jun 2017
Median time to start treatment ⁴ (minutes)				7	8	5	8	7
90th percentile time to start treatment ⁵ (minutes)				29	29	18	35	23

(†) Data points are not shown in graphs for quarters when patient numbers are too small.

(‡) Caution is advised when interpreting abrupt changes over time at the hospital level. For example, performance before and after transition to a new information system is not directly comparable. For more information, see Background Paper: Approaches to reporting time measures of emergency department performance, December 2011.

(§) Quarterly information for this hospital is shown where data are available from the Health Information Exchange, NSW Health. For more information, see Background Paper: Approaches to reporting time measures of emergency department performance, December 2011.

Moruya District Hospital: Time patients waited to start treatment, triage 3

April to June 2017

Triage 3 Urgent (e.g. moderate blood loss, dehydration)

Number of triage 3 patients: 830

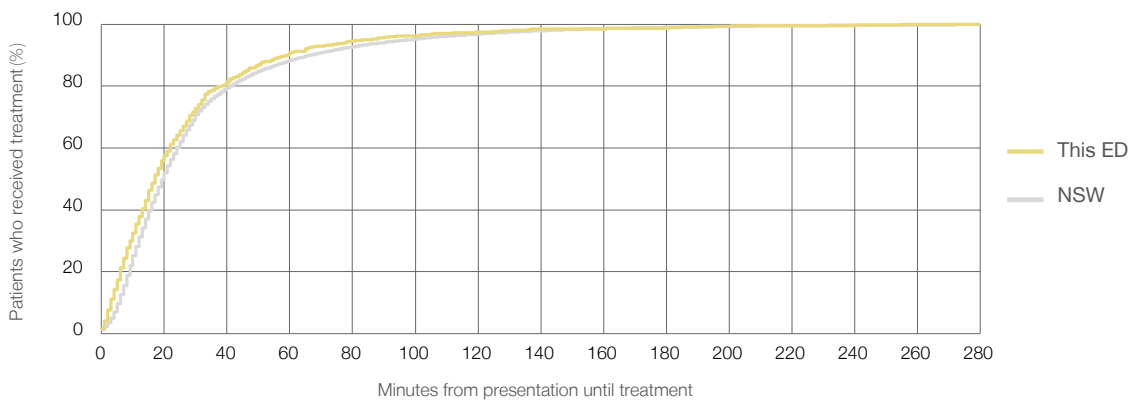
Number of triage 3 patients used to calculate waiting time:³ 801

Median time to start treatment⁴ 17 minutes

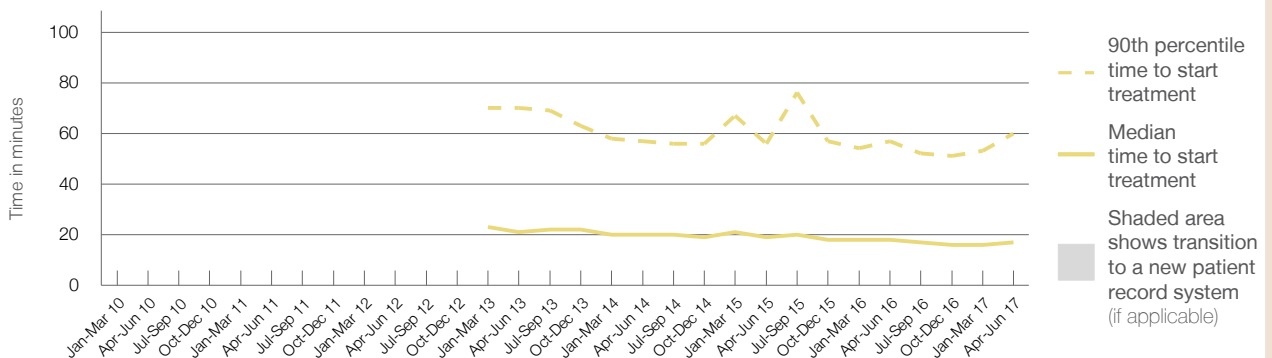
90th percentile time to start treatment⁵ 60 minutes

Same period last year	NSW (this period)
699	689
18 minutes	20 minutes
57 minutes	67 minutes

Percentage of triage 3 patients who received treatment by time, April to June 2017



Time patients waited to start treatment (minutes) for triage 3 patients, April 2012 to June 2017^{†‡§}



	Apr-Jun 2010	Apr-Jun 2011	Apr-Jun 2012	Apr-Jun 2013	Apr-Jun 2014	Apr-Jun 2015	Apr-Jun 2016	Apr-Jun 2017
Median time to start treatment ⁴ (minutes)				21	20	19	18	17
90th percentile time to start treatment ⁵ (minutes)				70	57	56	57	60

(†) Data points are not shown in graphs for quarters when patient numbers are too small.

(‡) Caution is advised when interpreting abrupt changes over time at the hospital level. For example, performance before and after transition to a new information system is not directly comparable. For more information, see Background Paper: Approaches to reporting time measures of emergency department performance, December 2011.

(§) Quarterly information for this hospital is shown where data are available from the Health Information Exchange, NSW Health. For more information, see Background Paper: Approaches to reporting time measures of emergency department performance, December 2011.

Moruya District Hospital: Time patients waited to start treatment, triage 4 April to June 2017

Triage 4 Semi-urgent (e.g. sprained ankle, earache)

Number of triage 4 patients: 867

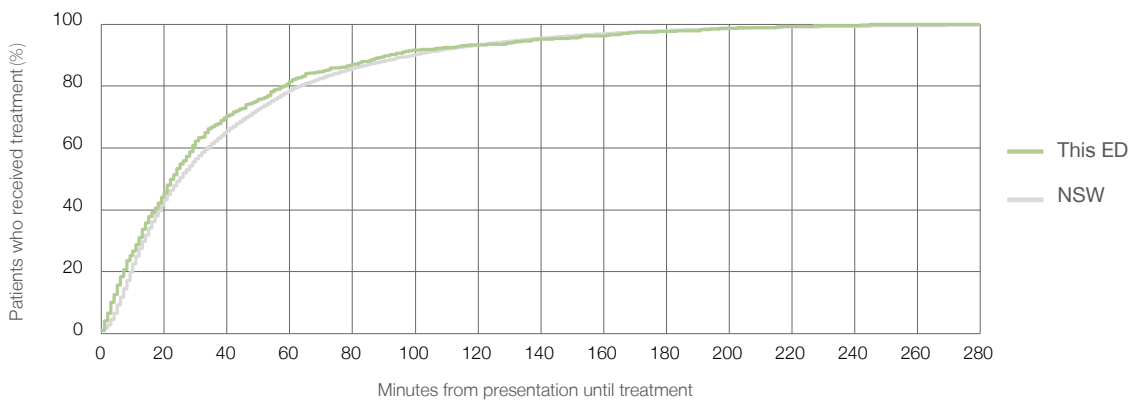
Number of triage 4 patients used to calculate waiting time:³ 780

Median time to start treatment⁴ 23 minutes

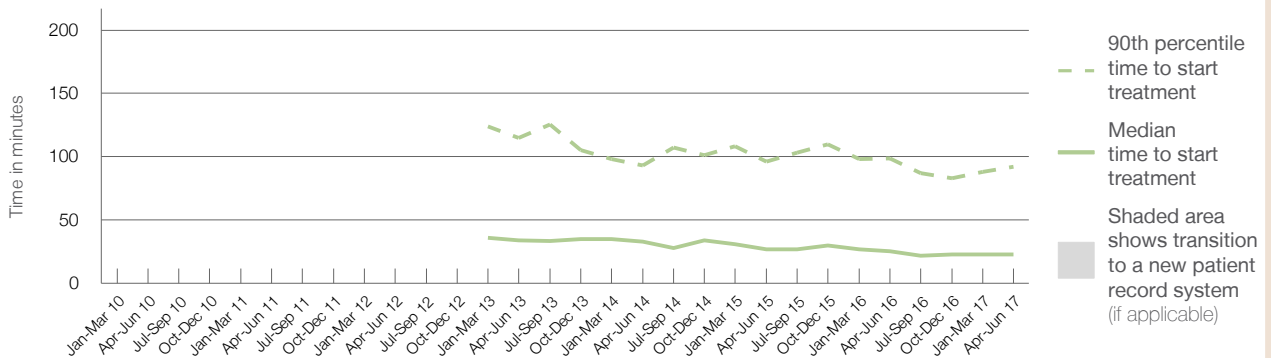
90th percentile time to start treatment⁵ 92 minutes

Same period last year	NSW (this period)
875	
820	
26 minutes	25 minutes
99 minutes	99 minutes

Percentage of triage 4 patients who received treatment by time, April to June 2017



Time patients waited to start treatment (minutes) for triage 4 patients, April 2012 to June 2017^{†‡§}



	Apr-Jun 2010	Apr-Jun 2011	Apr-Jun 2012	Apr-Jun 2013	Apr-Jun 2014	Apr-Jun 2015	Apr-Jun 2016	Apr-Jun 2017
Median time to start treatment ⁴ (minutes)				34	33	27	26	23
90th percentile time to start treatment ⁵ (minutes)				115	93	96	99	92

(†) Data points are not shown in graphs for quarters when patient numbers are too small.

(‡) Caution is advised when interpreting abrupt changes over time at the hospital level. For example, performance before and after transition to a new information system is not directly comparable. For more information, see Background Paper: Approaches to reporting time measures of emergency department performance, December 2011.

(§) Quarterly information for this hospital is shown where data are available from the Health Information Exchange, NSW Health. For more information, see Background Paper: Approaches to reporting time measures of emergency department performance, December 2011.

Moruya District Hospital: Time patients waited to start treatment, triage 5

April to June 2017

Triage 5 Non-urgent (e.g. small cuts or abrasions)

Number of triage 5 patients: 329

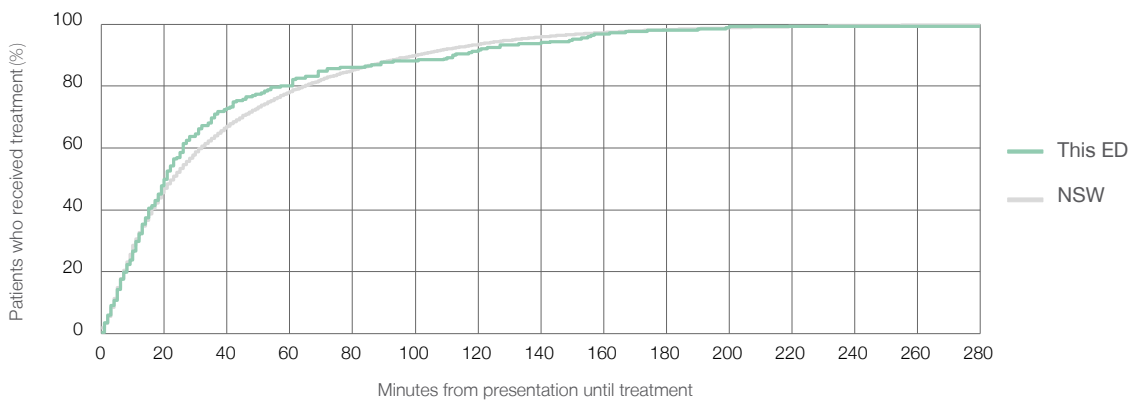
Number of triage 5 patients used to calculate waiting time:³ 251

Median time to start treatment⁴ 21 minutes

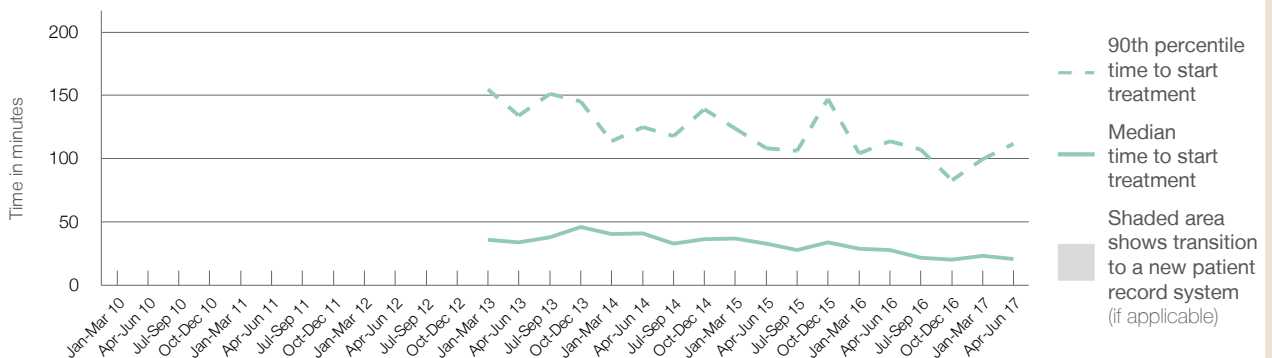
90th percentile time to start treatment⁵ 112 minutes

Same period last year	NSW (this period)
334	
283	
28 minutes	23 minutes
114 minutes	101 minutes

Percentage of triage 5 patients who received treatment by time, April to June 2017



Time patients waited to start treatment (minutes) for triage 5 patients, April 2012 to June 2017^{†‡§}



	Apr-Jun 2010	Apr-Jun 2011	Apr-Jun 2012	Apr-Jun 2013	Apr-Jun 2014	Apr-Jun 2015	Apr-Jun 2016	Apr-Jun 2017
Median time to start treatment ⁴ (minutes)				34	41	33	28	21
90th percentile time to start treatment ⁵ (minutes)				134	125	108	114	112

(†) Data points are not shown in graphs for quarters when patient numbers are too small.

(‡) Caution is advised when interpreting abrupt changes over time at the hospital level. For example, performance before and after transition to a new information system is not directly comparable. For more information, see Background Paper: Approaches to reporting time measures of emergency department performance, December 2011.

(§) Quarterly information for this hospital is shown where data are available from the Health Information Exchange, NSW Health. For more information, see Background Paper: Approaches to reporting time measures of emergency department performance, December 2011.

Moruya District Hospital: Time patients spent in the ED

April to June 2017

All presentations:¹ 2,536 patients

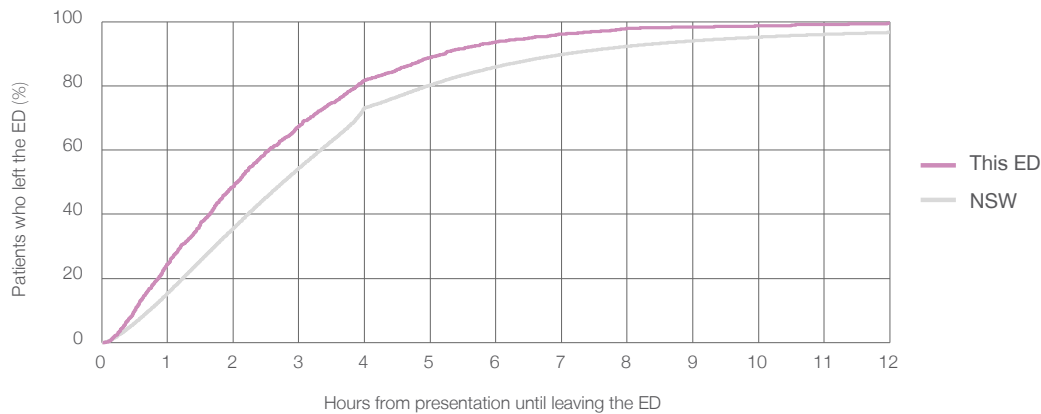
Presentations used to calculate time to leaving the ED:⁶ 2,536 patients

Median time spent in the ED⁸ 2 hours and 4 minutes

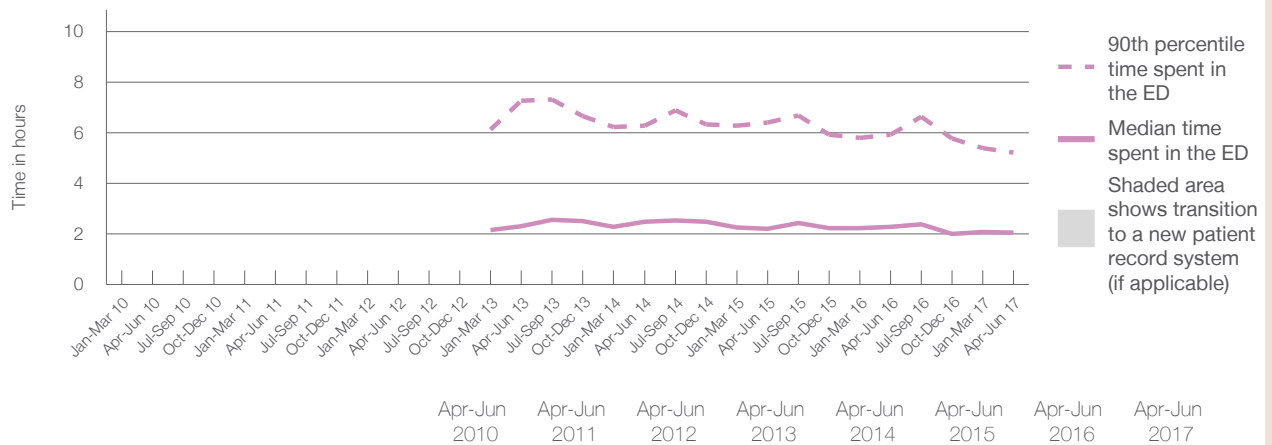
90th percentile time spent in the ED⁹ 5 hours and 13 minutes

Same period last year	NSW (this period)
2,325	2,325
2 hours and 17 minutes	2 hours and 46 minutes
5 hours and 55 minutes	7 hours and 5 minutes

Percentage of patients who left the ED by time, April to June 2017



Time patients spent in the ED, by quarter, April 2012 to June 2017^{†‡§}



	Apr-Jun 2010	Apr-Jun 2011	Apr-Jun 2012	Apr-Jun 2013	Apr-Jun 2014	Apr-Jun 2015	Apr-Jun 2016	Apr-Jun 2017
Median time to leaving the ED ⁸ (hours, minutes)				2h 18m	2h 29m	2h 13m	2h 17m	2h 4m
90th percentile time to leaving the ED ⁹ (hours, minutes)				7h 16m	6h 17m	6h 24m	5h 55m	5h 13m

(†) Data points are not shown in graphs for quarters when patient numbers are too small.

(‡) Caution is advised when interpreting abrupt changes over time at the hospital level. For example, performance before and after transition to a new information system is not directly comparable. For more information, see Background Paper: Approaches to reporting time measures of emergency department performance, December 2011.

(§) Quarterly information for this hospital is shown where data are available from the Health Information Exchange, NSW Health. For more information, see Background Paper: Approaches to reporting time measures of emergency department performance, December 2011.

Moruya District Hospital: Time patients spent in the ED
By mode of separation
April to June 2017

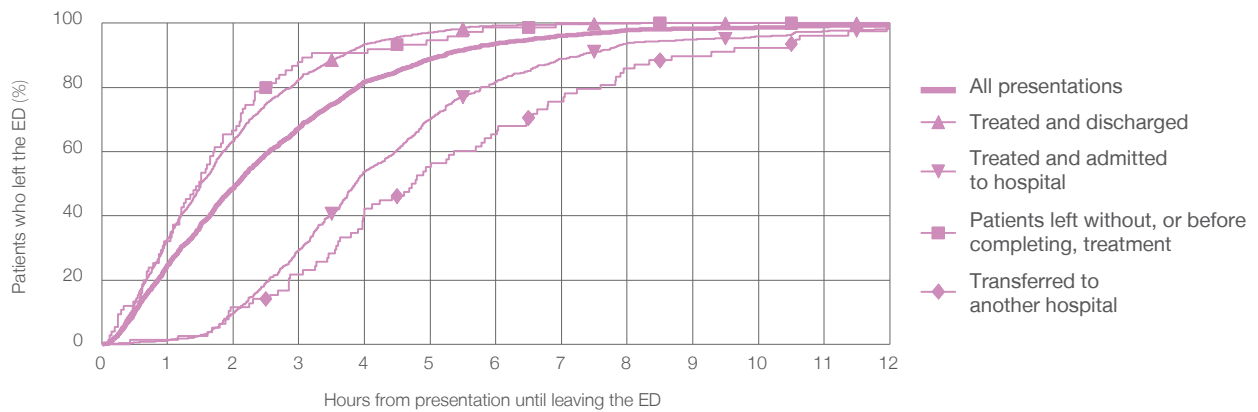
All presentations:¹ 2,536 patients

Presentations used to calculate time to leaving the ED:⁶ 2,536 patients

Treated and discharged	1,670 (65.9%)
Treated and admitted to hospital	648 (25.6%)
Patient left without, or before completing, treatment	75 (3.0%)
Transferred to another hospital	78 (3.1%)
Other	65 (2.6%)

Same period last year	Change since one year ago
2,325	9.1%
1,486	12.4%
679	-4.6%
71	5.6%
73	6.8%
16	306.3%

Percentage of patients who left the ED by time and mode of separation, April to June 2017^{†‡§}



1 hour 2 hours 3 hours 4 hours 6 hours 8 hours 10 hours 12 hours

	1 hour	2 hours	3 hours	4 hours	6 hours	8 hours	10 hours	12 hours
Treated and discharged	32.8%	63.3%	82.5%	93.5%	99.2%	99.9%	100%	100%
Treated and admitted to hospital	1.2%	9.7%	29.3%	53.9%	81.8%	93.7%	95.8%	98.3%
Patient left without, or before completing, treatment	32.0%	66.7%	88.0%	90.7%	98.7%	100%	100%	100%
Transferred to another hospital	1.3%	11.5%	21.8%	42.3%	65.4%	85.9%	92.3%	98.7%
All presentations	24.6%	48.7%	67.5%	81.8%	93.7%	97.8%	98.6%	99.4%

(†) Data points are not shown in graphs for quarters when patient numbers are too small.

(‡) Caution is advised when interpreting abrupt changes over time at the hospital level. For example, performance before and after transition to a new information system is not directly comparable. For more information, see Background Paper: Approaches to reporting time measures of emergency department performance, December 2011.

(§) Quarterly information for this hospital is shown where data are available from the Health Information Exchange, NSW Health. For more information, see Background Paper: Approaches to reporting time measures of emergency department performance, December 2011.

Moruya District Hospital: Time spent in the ED
 Percentage of patients who spent four hours or less in the ED
 April to June 2017

All presentations at the emergency department:¹ 2,536 patients

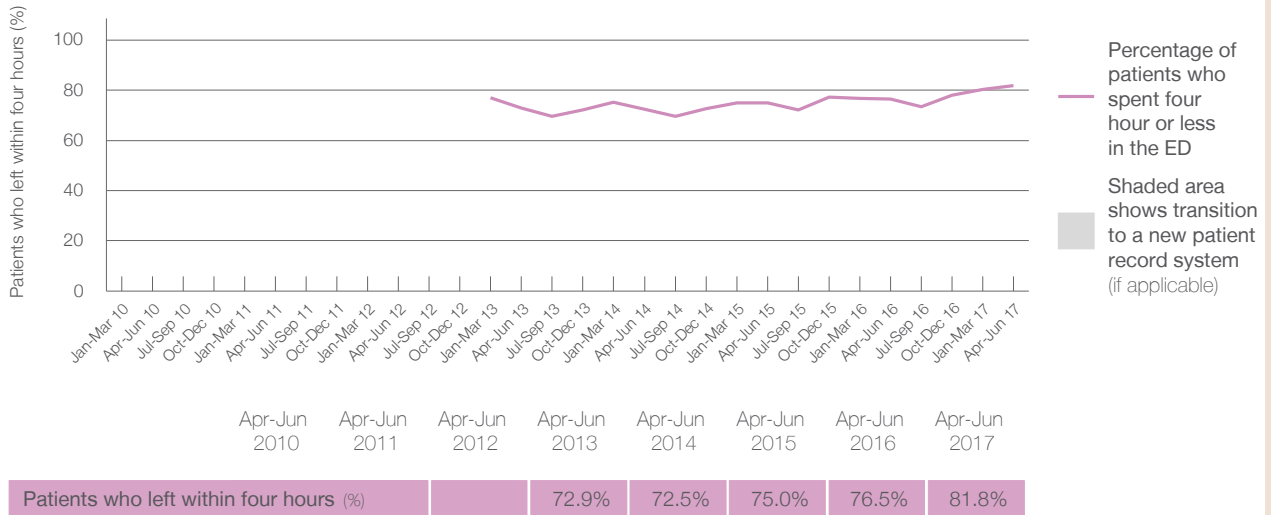
Presentations used to calculate time to leaving the ED:⁶ 2,536 patients

Percentage of patients who spent four hours or less in the ED



	Same period last year	Change since one year ago
All presentations at the emergency department: ¹	2,325	9.1%
Presentations used to calculate time to leaving the ED: ⁶	2,325	9.1%
Percentage of patients who spent four hours or less in the ED	76.5%	

Percentage of patients who spent four hours or less in the ED, by quarter, April 2012 to June 2017^{†‡§}



* Suppressed due to small numbers and to protect privacy. Relevant graphs are also suppressed.
 † Data points are not shown in graphs for quarters when patient numbers were too small.
 ‡ Caution is advised when interpreting abrupt changes over time at the hospital level. For example, performance before and after transition to a new information system is not directly comparable. For more information see *Background Paper: Approaches to reporting time measures of emergency department performance, December 2011*.
 § Quarterly information for this hospital is shown where data are available from the Health Information Exchange, NSW Health. For more information, see *Background Paper: Approaches to reporting time measures of emergency department performance, December 2011*.

- All emergency and non-emergency presentations at the emergency department (ED).
- All presentations that have a triage category and are coded as emergency presentations or unplanned return visits.
- Some patients are excluded from ED time measures due to calculation requirements. For details, see the *Technical Supplement: Emergency department measures, July to September 2016*.
- The median is the time by which half of patients started treatment. The other half of patients took equal to or longer than this time.
- The 90th percentile is the time by which 90% of patients started treatment. The final 10% of patients took equal to or longer than this time.
- All presentations that have a departure time.
- Transfer of care time refers to the period between arrival of patients at the ED by ambulance and the transfer of responsibility for their care from paramedics to ED staff in an ED treatment zone. For more information see *Spotlight on Measurement: measuring transfer of care from the ambulance to the emergency department*.
- The median is the time by which half of patients left the ED. The other half of patients took equal to or longer than this time.
- The 90th percentile is the time by which 90% of patients left the ED. The final 10% of patients took equal to or longer than this time.

Note: Presentation time is the earlier of times recorded for the start of clerical registration or the triage process.
 Treatment time is the earliest time recorded when a healthcare professional provides medical care that is relevant to the patient's presenting problems. For patients who were treated and discharged, departure time is the time when treatment was completed. For all other patients, departure time is the time when the patient actually left the ED.

Note: All percentages are rounded and therefore percentages may not add to 100%.

Sources: ED data from Health Information Exchange, NSW Health (extracted 21 July 2017).
 Transfer of care data from Transfer of Care Reporting System (extracted 21 July 2017).