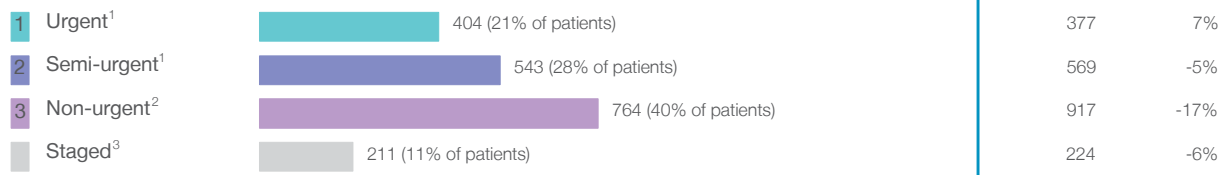


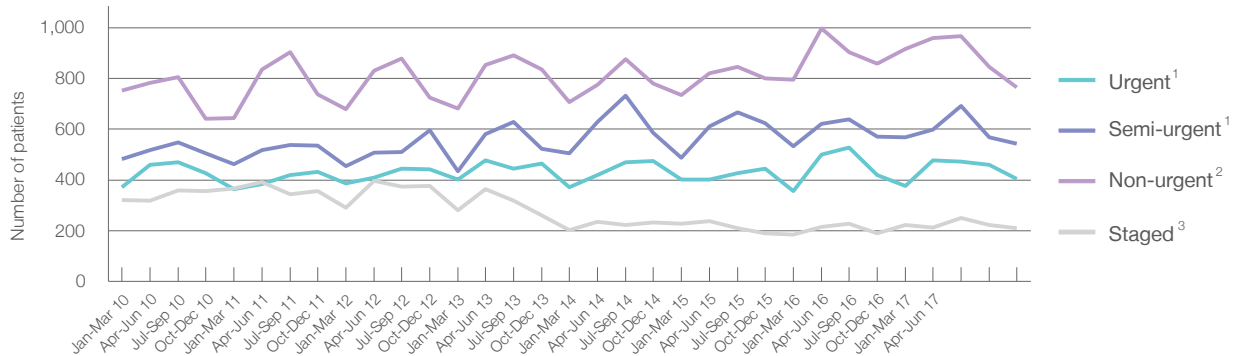
## Concord Repatriation General Hospital: Elective surgery performed

January to March 2018

Patients who received elective surgery by urgency category: 1,922 patients



Patients who received elective surgery by urgency category by quarter, January 2013 to March 2018



	Jan-Mar 2010	Jan-Mar 2011	Jan-Mar 2012	Jan-Mar 2013	Jan-Mar 2014	Jan-Mar 2015	Jan-Mar 2016	Jan-Mar 2017	Jan-Mar 2018
All categories	1,927	1,838	1,811	1,800	1,787	1,854	1,868	2,087	1,922
Urgent <sup>1</sup>	371	364	386	401	372	403	356	377	404
Semi-urgent <sup>1</sup>	482	463	455	435	506	488	532	569	543
Non-urgent <sup>2</sup>	753	645	680	682	706	734	794	917	764
Staged <sup>3</sup>	321	366	290	282	203	229	186	224	211

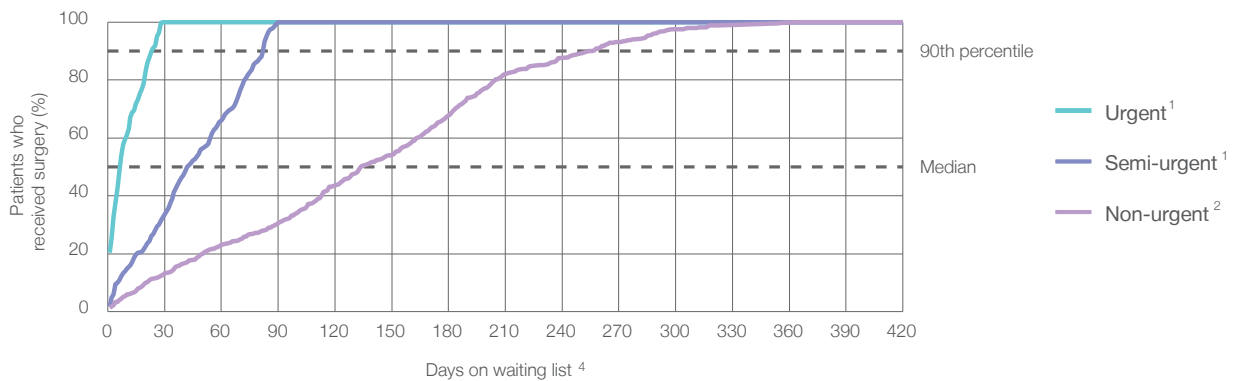
## Concord Repatriation General Hospital: Time waited to receive elective surgery

January to March 2018

Percentage of patients who received surgery within the clinically recommended timeframe

			Same period last year	Peer group (this period)
1	Urgent <sup>1</sup>	Recommended: 30 days	100%	99.7%
2	Semi-urgent <sup>1</sup>	Recommended: 90 days	100%	93.1%
3	Non-urgent <sup>2</sup>	Recommended: 365 days	100%	91.4%

Percentage of patients who received elective surgery by waiting time (days)



Waiting time (days) for people who received surgery by urgency category

1	Urgent: <sup>1</sup> 404 patients				
	Median time to receive surgery	<div><div></div>7 days</div>	9	6	8
	90th percentile time to receive surgery	<div><div></div>24 days</div>	25	21	25
2	Semi-urgent: <sup>1</sup> 543 patients				
	Median time to receive surgery	<div><div></div>42 days</div>	45	39	42
	90th percentile time to receive surgery	<div><div></div>83 days</div>	87	78	85
3	Non-urgent: <sup>2</sup> 764 patients				
	Median time to receive surgery	<div><div></div>134 days</div>	190	139	177
	90th percentile time to receive surgery	<div><div></div>256 days</div>	363	301	358

## Concord Repatriation General Hospital: Time waited to receive elective surgery

January to March 2018

### Median<sup>5</sup> waiting time (days) for patients who received elective surgery by specialty of surgeon

		Same period last year	Peer group (this period)
Cardiothoracic surgery	12 days (54 patients)	15	23
Ear, nose and throat surgery	169 days (71 patients)	225	191
General surgery	26 days (425 patients)	23	31
Gynaecology	85 days (17 patients)	93	32
Medical	2 days (30 patients)	2	14
Neurosurgery	72 days (74 patients)	81	63
Ophthalmology	142 days (249 patients)	235	152
Orthopaedic surgery	142 days (208 patients)	172	83
Plastic surgery	43 days (253 patients)	28	23
Urology	43 days (437 patients)	34	39
Vascular surgery	20 days (104 patients)	17	22

### Median<sup>5</sup> waiting time (days) for patients who received elective surgery by common procedures<sup>7</sup>

		Same period last year	Peer group (this period)
Abdominal hysterectomy	* (< 5 patients)	*	35
Cataract extraction	159 days (200 patients)	264	180
Cholecystectomy	55 days (36 patients)	21	59
Coronary artery bypass graft	n/a (0 patients)	n/a	42
Cystoscopy	39 days (159 patients)	27	32
Haemorrhoidectomy	* (7 patients)	57	83
Hysteroscopy	* (5 patients)	96	43
Inguinal herniorrhaphy	37 days (37 patients)	39	76
Myringoplasty / Tympanoplasty	* (< 5 patients)	*	335
Myringotomy	n/a (0 patients)	n/a	197
Other - General	23 days (113 patients)	15	21
Prostatectomy	52 days (21 patients)	42	70
Septoplasty	150 days (15 patients)	160	344
Tonsillectomy	* (6 patients)	62	330
Total hip replacement	117 days (23 patients)	188	147
Total knee replacement	187 days (61 patients)	218	253
Varicose veins stripping and ligation	48 days (13 patients)	58	79

## Concord Repatriation General Hospital: Elective surgery waiting list

January to March 2018

Patients ready for surgery on waiting list at start of quarter: 1,881 patients

Patients ready for surgery on waiting list at end of quarter: 1,941 patients

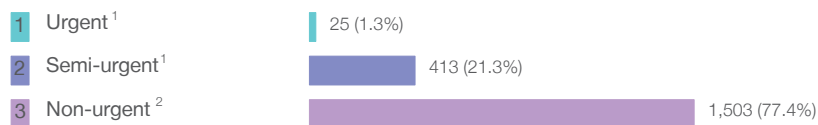
Patients not ready for surgery<sup>8</sup> on waiting list at end of quarter: 675 patients

Same period last year	Change since one year ago
2,067	-9%
1,936	0%
705	-4%

## Concord Repatriation General Hospital: Patients ready for elective surgery

as at 31st March 2018

Patients ready for surgery on waiting list by urgency category: 1,941 patients



Same period last year	Change since one year ago
52	-52%
341	21%
1,543	-3%

## Concord Repatriation General Hospital: Patients ready for elective surgery as at 31st March 2018

Patients ready for elective surgery by specialty of surgeon: 1,941 patients

	As at 31 Mar 2018	Same time last year	Change since one year ago
All specialties	1,941	1,936	0%
Cardiothoracic surgery	11	14	-21%
Ear, nose and throat surgery	203	167	22%
General surgery	289	239	21%
Gynaecology	30	56	-46%
Medical	0	< 5	*
Neurosurgery	123	103	19%
Ophthalmology	330	488	-32%
Orthopaedic surgery	479	476	1%
Plastic surgery	181	174	4%
Urology	236	177	33%
Vascular surgery	59	38	55%

Patients ready for elective surgery for common procedures <sup>7</sup>

	As at 31 Mar 2018	Same time last year	Change since one year ago
Abdominal hysterectomy	0	< 5	*
Cataract extraction	265	419	-37%
Cholecystectomy	33	20	65%
Coronary artery bypass graft	0	< 5	n/a
Cystoscopy	65	52	25%
Haemorrhoidectomy	12	8	50%
Hysteroscopy	14	17	-18%
Inguinal herniorrhaphy	45	32	41%
Myringoplasty / Tympanoplasty	12	< 5	*
Myringotomy	0	< 5	n/a
Other - General	42	32	31%
Prostatectomy	26	17	53%
Septoplasty	38	22	73%
Tonsillectomy	20	8	150%
Total hip replacement	35	47	-26%
Total knee replacement	145	136	7%
Varicose veins stripping and ligation	24	22	9%

## Concord Repatriation General Hospital: Patients ready for elective surgery as at 31st March 2018

Patients ready for elective surgery, on the waiting list for longer than 12 months

As at 31 Mar 2018

Same time last year

All specialties	0	0
-----------------	---	---

\* Suppressed due to small numbers and to protect privacy. Relevant graphs are also suppressed.

< 5 Less than five patients. For measures by urgency category, counts are included in an adjacent category. Relevant graphs are also suppressed.

1. Excluding staged procedures.
2. Excluding staged procedures and cystoscopy.
3. Including non-urgent cystoscopy.
4. Excludes the total number of days the patient was coded as 'not ready for surgery'.
5. This is the number of days it took for half of patients who received elective surgery during the period to be admitted and receive their surgery. The other half took equal to or longer than the median to be admitted for surgery.
6. This is the number of days it took for 90% of patients who received elective surgery during the period to be admitted and receive their surgery. The final 10% of patients took equal to or longer than the 90th percentile.
7. The procedures included in this list are procedures which are high volume; some may be associated with long waiting periods. For a description of these procedures see *Elective Surgery Glossary of Common Procedures, December 2012*.
8. Includes staged procedures, non-urgent cystoscopy, and patients currently not available for personal reasons.

For more information: For details of methods, see the *Technical Supplement: Elective surgery measures, January to March 2018*.

**Note:** All percentages rounded to whole numbers and therefore percentages may not add to 100%.

**Source:** Waiting List Collection On-Line System, NSW Health (extracted 13 April 2018.).