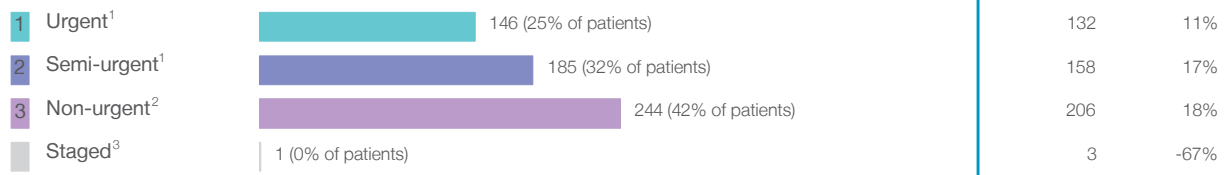


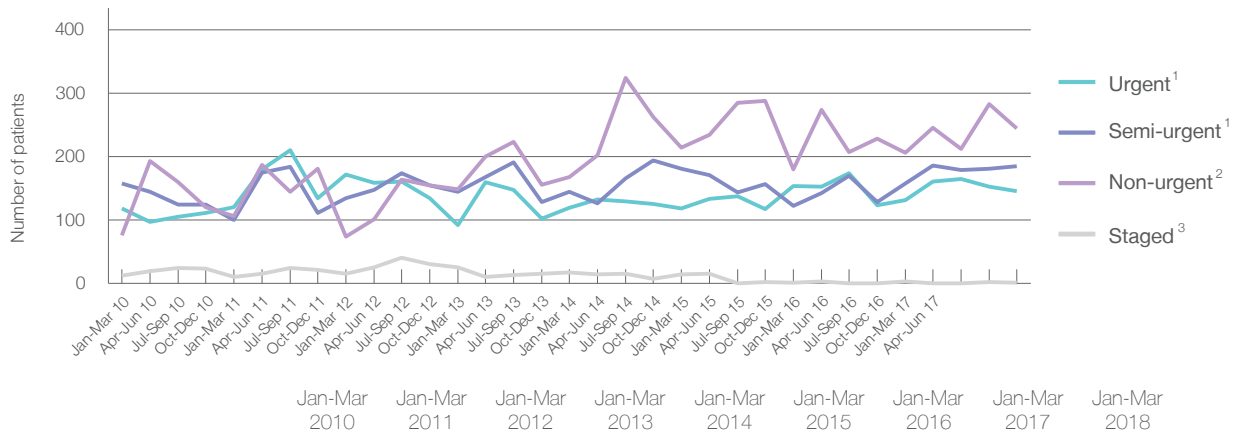
Grafton Base Hospital: Elective surgery performed

January to March 2018

Patients who received elective surgery by urgency category: 576 patients



Patients who received elective surgery by urgency category by quarter, January 2013 to March 2018



All categories	365	337	397	412	450	528	457	499	576
Urgent ¹	118	120	172	92	119	118	154	132	146
Semi-urgent ¹	158	100	135	145	145	181	122	158	185
Non-urgent ²	76	106	74	149	168	214	180	206	244
Staged ³	13	11	16	26	18	15	1	3	1

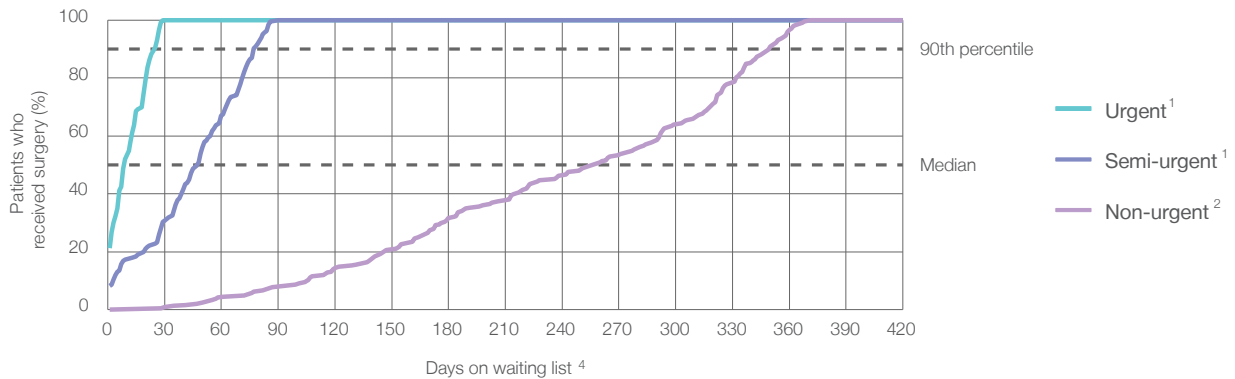
Grafton Base Hospital: Time waited to receive elective surgery

January to March 2018

Percentage of patients who received surgery within the clinically recommended timeframe

			Same period last year	Peer group (this period)
1	Urgent ¹	Recommended: 30 days	100%	100%
2	Semi-urgent ¹	Recommended: 90 days	94.3%	98.1%
3	Non-urgent ²	Recommended: 365 days	99.5%	97.4%

Percentage of patients who received elective surgery by waiting time (days)



Waiting time (days) for people who received surgery by urgency category

		Peer group (this period)	This hospital (same period last year)	Peer group (same period last year)
1	Urgent: ¹ 146 patients			
	Median time to receive surgery	9 days	13	13
	90th percentile time to receive surgery	25 days	27	22
2	Semi-urgent: ¹ 185 patients			
	Median time to receive surgery	48 days	52	51
	90th percentile time to receive surgery	77 days	84	85
3	Non-urgent: ² 244 patients			
	Median time to receive surgery	257 days	247	218
	90th percentile time to receive surgery	350 days	352	332

Grafton Base Hospital: Time waited to receive elective surgery

January to March 2018

Median⁵ waiting time (days) for patients who received elective surgery by specialty of surgeon

		Same period last year	Peer group (this period)
Cardiothoracic surgery	n/a (0 patients)	n/a	n/a
Ear, nose and throat surgery	* (8 patients)	78	101
General surgery	27 days (219 patients)	34	50
Gynaecology	53 days (71 patients)	37	52
Medical	* (5 patients)	*	11
Neurosurgery	n/a (0 patients)	n/a	n/a
Ophthalmology	312 days (109 patients)	249	279
Orthopaedic surgery	82 days (164 patients)	43	179
Plastic surgery	n/a (0 patients)	n/a	57
Urology	n/a (0 patients)	n/a	39
Vascular surgery	n/a (0 patients)	n/a	85

Median⁵ waiting time (days) for patients who received elective surgery by common procedures ⁷

		Same period last year	Peer group (this period)
Abdominal hysterectomy	* (7 patients)	*	87
Cataract extraction	317 days (102 patients)	249	281
Cholecystectomy	36 days (17 patients)	85	52
Coronary artery bypass graft	n/a (0 patients)	n/a	n/a
Cystoscopy	* (< 5 patients)	*	32
Haemorrhoidectomy	* (9 patients)	*	77
Hysteroscopy	27 days (15 patients)	30	43
Inguinal herniorrhaphy	49 days (17 patients)	50	82
Myringoplasty / Tympanoplasty	n/a (0 patients)	*	*
Myringotomy	n/a (0 patients)	*	*
Other - General	* (8 patients)	*	33
Prostatectomy	n/a (0 patients)	n/a	84
Septoplasty	n/a (0 patients)	n/a	251
Tonsillectomy	* (5 patients)	*	119
Total hip replacement	173 days (19 patients)	231	259
Total knee replacement	222 days (33 patients)	208	294
Varicose veins stripping and ligation	n/a (0 patients)	n/a	104

Grafton Base Hospital: Elective surgery waiting list

January to March 2018

Patients ready for surgery on waiting list at start of quarter: 881 patients

Patients ready for surgery on waiting list at end of quarter: 829 patients

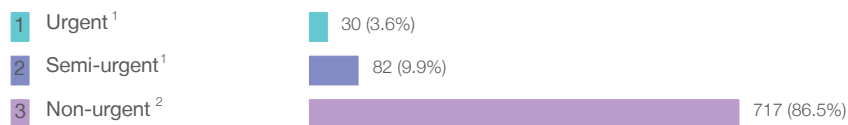
Patients not ready for surgery⁸ on waiting list at end of quarter: 157 patients

Same period last year	Change since one year ago
743	19%
764	9%
172	-9%

Grafton Base Hospital: Patients ready for elective surgery

as at 31st March 2018

Patients ready for surgery on waiting list by urgency category: 829 patients



Same period last year	Change since one year ago
22	36%
111	-26%
631	14%

Grafton Base Hospital: Patients ready for elective surgery as at 31st March 2018

Patients ready for elective surgery by specialty of surgeon: 829 patients

	As at 31 Mar 2018	Same time last year	Change since one year ago
All specialties	829	764	9%
Cardiothoracic surgery	0	0	n/a
Ear, nose and throat surgery	17	20	-15%
General surgery	75	115	-35%
Gynaecology	41	68	-40%
Medical	< 5	0	n/a
Neurosurgery	0	0	n/a
Ophthalmology	475	397	20%
Orthopaedic surgery	220	164	34%
Plastic surgery	0	0	n/a
Urology	0	0	n/a
Vascular surgery	0	0	n/a

Patients ready for elective surgery for common procedures ⁷

	As at 31 Mar 2018	Same time last year	Change since one year ago
Abdominal hysterectomy	6	15	-60%
Cataract extraction	452	372	22%
Cholecystectomy	9	12	-25%
Coronary artery bypass graft	0	< 5	n/a
Cystoscopy	0	< 5	n/a
Haemorrhoidectomy	< 5	9	*
Hysteroscopy	7	9	-22%
Inguinal herniorrhaphy	11	16	-31%
Myringoplasty / Tympanoplasty	< 5	< 5	n/a
Myringotomy	0	< 5	n/a
Other - General	0	< 5	*
Prostatectomy	0	< 5	n/a
Septoplasty	< 5	5	*
Tonsillectomy	< 5	5	*
Total hip replacement	48	28	71%
Total knee replacement	107	75	43%
Varicose veins stripping and ligation	< 5	< 5	*

Grafton Base Hospital: Patients ready for elective surgery as at 31st March 2018

Patients ready for elective surgery, on the waiting list for longer than 12 months

As at 31 Mar 2018

Same time last year

All specialties	0	0
-----------------	---	---

* Suppressed due to small numbers and to protect privacy. Relevant graphs are also suppressed.

< 5 Less than five patients. For measures by urgency category, counts are included in an adjacent category. Relevant graphs are also suppressed.

1. Excluding staged procedures.
2. Excluding staged procedures and cystoscopy.
3. Including non-urgent cystoscopy.
4. Excludes the total number of days the patient was coded as 'not ready for surgery'.
5. This is the number of days it took for half of patients who received elective surgery during the period to be admitted and receive their surgery. The other half took equal to or longer than the median to be admitted for surgery.
6. This is the number of days it took for 90% of patients who received elective surgery during the period to be admitted and receive their surgery. The final 10% of patients took equal to or longer than the 90th percentile.
7. The procedures included in this list are procedures which are high volume; some may be associated with long waiting periods. For a description of these procedures see *Elective Surgery Glossary of Common Procedures, December 2012*.
8. Includes staged procedures, non-urgent cystoscopy, and patients currently not available for personal reasons.

For more information: For details of methods, see the *Technical Supplement: Elective surgery measures, January to March 2018*.

Note: All percentages rounded to whole numbers and therefore percentages may not add to 100%.

Source: Waiting List Collection On-Line System, NSW Health (extracted 13 April 2018.).