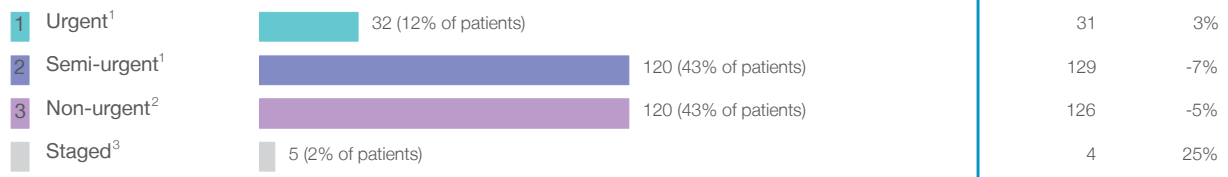


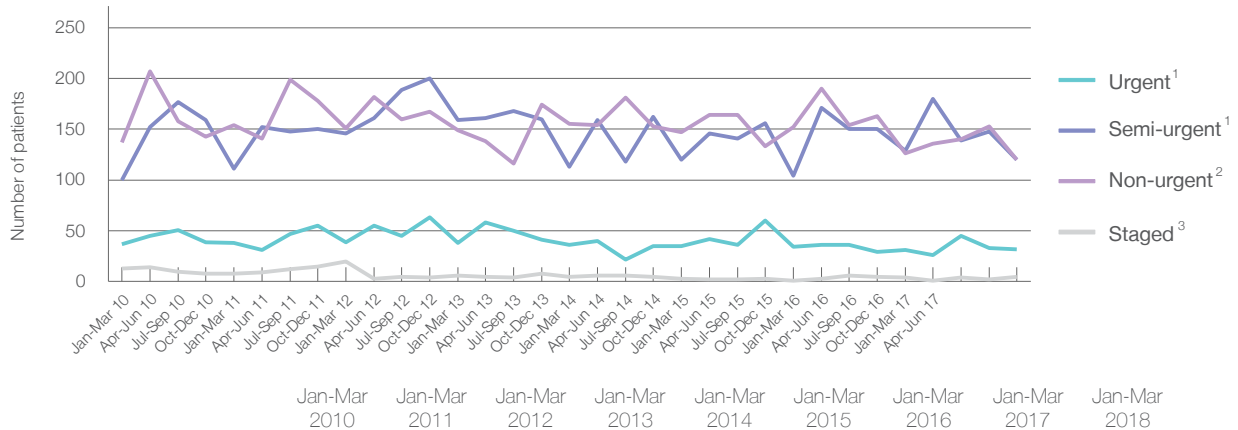
Ryde Hospital: Elective surgery performed

January to March 2018

Patients who received elective surgery by urgency category: 277 patients



Patients who received elective surgery by urgency category by quarter, January 2013 to March 2018



All categories	287	311	356	352	309	305	291	290	277
Urgent ¹	37	38	39	38	36	35	34	31	32
Semi-urgent ¹	100	111	146	159	113	120	104	129	120
Non-urgent ²	137	154	151	149	155	147	152	126	120
Staged ³	13	8	20	6	5	3	1	4	5

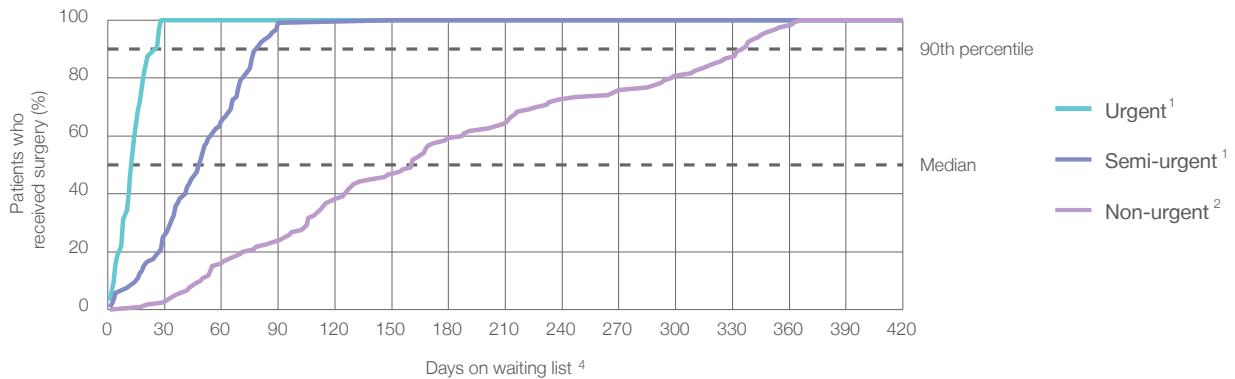
Ryde Hospital: Time waited to receive elective surgery

January to March 2018

Percentage of patients who received surgery within the clinically recommended timeframe

			Same period last year	Peer group (this period)
1	Urgent ¹	Recommended: 30 days	100%	100%
2	Semi-urgent ¹	Recommended: 90 days	100%	98.1%
3	Non-urgent ²	Recommended: 365 days	95.2%	97.4%

Percentage of patients who received elective surgery by waiting time (days)



Waiting time (days) for people who received surgery by urgency category

		Peer group (this period)	This hospital (same period last year)	Peer group (same period last year)
1	Urgent: ¹ 32 patients			
	Median time to receive surgery	13	14	13
	90th percentile time to receive surgery	27	*	26
2	Semi-urgent: ¹ 120 patients			
	Median time to receive surgery	52	43	50
	90th percentile time to receive surgery	84	83	83
3	Non-urgent: ² 120 patients			
	Median time to receive surgery	247	170	254
	90th percentile time to receive surgery	352	356	351

Ryde Hospital: Time waited to receive elective surgery

January to March 2018

Median⁵ waiting time (days) for patients who received elective surgery by specialty of surgeon

		Same period last year	Peer group (this period)
Cardiothoracic surgery	n/a (0 patients)	n/a	n/a
Ear, nose and throat surgery	294 days (12 patients)	333	101
General surgery	48 days (116 patients)	43	50
Gynaecology	48 days (56 patients)	37	52
Medical	n/a (0 patients)	n/a	11
Neurosurgery	n/a (0 patients)	n/a	n/a
Ophthalmology	n/a (0 patients)	*	279
Orthopaedic surgery	168 days (78 patients)	134	179
Plastic surgery	n/a (0 patients)	n/a	57
Urology	30 days (13 patients)	10	39
Vascular surgery	* (< 5 patients)	*	85

Median⁵ waiting time (days) for patients who received elective surgery by common procedures⁷

		Same period last year	Peer group (this period)
Abdominal hysterectomy	* (< 5 patients)	*	87
Cataract extraction	n/a (0 patients)	*	281
Cholecystectomy	49 days (39 patients)	48	52
Coronary artery bypass graft	n/a (0 patients)	n/a	n/a
Cystoscopy	34 days (13 patients)	*	32
Haemorrhoidectomy	* (< 5 patients)	*	77
Hysteroscopy	49 days (38 patients)	38	43
Inguinal herniorrhaphy	60 days (21 patients)	49	82
Myringoplasty / Tympanoplasty	n/a (0 patients)	n/a	*
Myringotomy	n/a (0 patients)	n/a	*
Other - General	n/a (0 patients)	*	33
Prostatectomy	n/a (0 patients)	n/a	84
Septoplasty	* (< 5 patients)	*	251
Tonsillectomy	* (< 5 patients)	*	119
Total hip replacement	161 days (11 patients)	135	259
Total knee replacement	215 days (17 patients)	128	294
Varicose veins stripping and ligation	* (< 5 patients)	*	104

Ryde Hospital: Elective surgery waiting list

January to March 2018

Patients ready for surgery on waiting list at start of quarter: 253 patients

Patients ready for surgery on waiting list at end of quarter: 444 patients

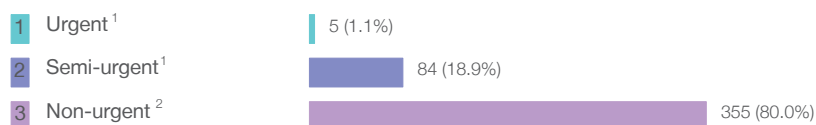
Patients not ready for surgery⁸ on waiting list at end of quarter: 60 patients

Same period last year	Change since one year ago
212	19%
323	37%
45	33%

Ryde Hospital: Patients ready for elective surgery

as at 31st March 2018

Patients ready for surgery on waiting list by urgency category: 444 patients



Same period last year	Change since one year ago
< 5	*
99	-13%
224	58%

Ryde Hospital: Patients ready for elective surgery as at 31st March 2018

Patients ready for elective surgery by specialty of surgeon: 444 patients

	As at 31 Mar 2018	Same time last year	Change since one year ago
All specialties	444	323	37%
Cardiothoracic surgery	0	0	n/a
Ear, nose and throat surgery	156	41	280%
General surgery	128	93	38%
Gynaecology	28	28	0%
Medical	< 5	0	n/a
Neurosurgery	0	0	n/a
Ophthalmology	0	0	n/a
Orthopaedic surgery	122	155	-21%
Plastic surgery	0	0	n/a
Urology	< 5	< 5	*
Vascular surgery	7	< 5	*

Patients ready for elective surgery for common procedures ⁷

	As at 31 Mar 2018	Same time last year	Change since one year ago
Abdominal hysterectomy	< 5	< 5	n/a
Cataract extraction	0	< 5	n/a
Cholecystectomy	31	27	15%
Coronary artery bypass graft	0	< 5	n/a
Cystoscopy	< 5	< 5	*
Haemorrhoidectomy	< 5	< 5	*
Hysteroscopy	15	20	-25%
Inguinal herniorrhaphy	31	28	11%
Myringoplasty / Tympanoplasty	0	< 5	n/a
Myringotomy	0	< 5	n/a
Other - General	0	< 5	*
Prostatectomy	0	< 5	n/a
Septoplasty	72	23	213%
Tonsillectomy	27	9	200%
Total hip replacement	27	26	4%
Total knee replacement	39	44	-11%
Varicose veins stripping and ligation	7	< 5	*

Ryde Hospital: Patients ready for elective surgery as at 31st March 2018

Patients ready for elective surgery, on the waiting list for longer than 12 months

As at 31 Mar 2018

Same time last year

All specialties

< 5

< 5

- * Suppressed due to small numbers and to protect privacy. Relevant graphs are also suppressed.
- < 5 Less than five patients. For measures by urgency category, counts are included in an adjacent category. Relevant graphs are also suppressed.
1. Excluding staged procedures.
 2. Excluding staged procedures and cystoscopy.
 3. Including non-urgent cystoscopy.
 4. Excludes the total number of days the patient was coded as 'not ready for surgery'.
 5. This is the number of days it took for half of patients who received elective surgery during the period to be admitted and receive their surgery. The other half took equal to or longer than the median to be admitted for surgery.
 6. This is the number of days it took for 90% of patients who received elective surgery during the period to be admitted and receive their surgery. The final 10% of patients took equal to or longer than the 90th percentile.
 7. The procedures included in this list are procedures which are high volume; some may be associated with long waiting periods. For a description of these procedures see *Elective Surgery Glossary of Common Procedures, December 2012*.
 8. Includes staged procedures, non-urgent cystoscopy, and patients currently not available for personal reasons.
- For more information: For details of methods, see the *Technical Supplement: Elective surgery measures, January to March 2018*.
- Note:** All percentages rounded to whole numbers and therefore percentages may not add to 100%.
- Source:** Waiting List Collection On-Line System, NSW Health (extracted 13 April 2018.).