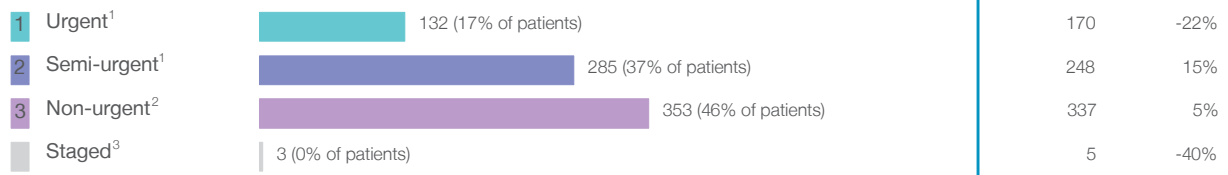


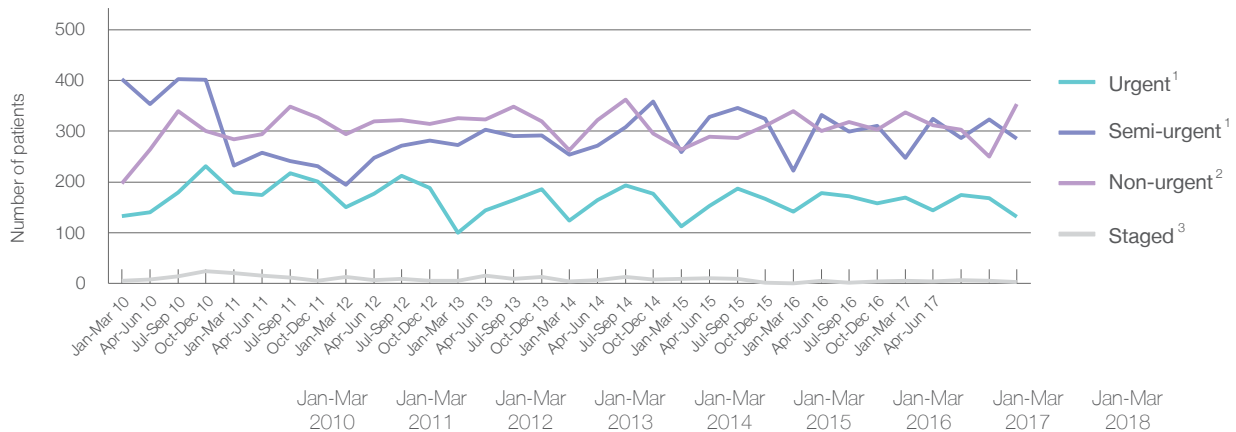
Sydney Children's Hospital, Randwick: Elective surgery performed

January to March 2018

Patients who received elective surgery by urgency category: 773 patients



Patients who received elective surgery by urgency category by quarter, January 2013 to March 2018



All categories	738	717	653	704	645	646	705	760	773
Urgent ¹	133	180	151	100	124	113	142	170	132
Semi-urgent ¹	403	232	195	273	254	259	222	248	285
Non-urgent ²	197	284	294	326	263	264	340	337	353
Staged ³	5	21	13	5	4	10	1	5	3

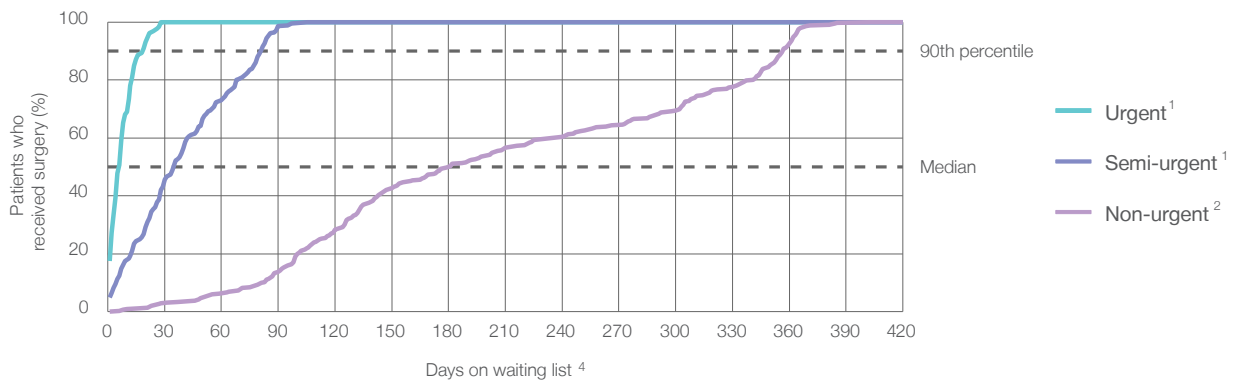
Sydney Children's Hospital, Randwick: Time waited to receive elective surgery

January to March 2018

Percentage of patients who received surgery within the clinically recommended timeframe

			Same period last year	Peer group (this period)
1	Urgent ¹	Recommended: 30 days	100%	99.1%
2	Semi-urgent ¹	Recommended: 90 days	98.6%	98.0%
3	Non-urgent ²	Recommended: 365 days	92.9%	94.7%

Percentage of patients who received elective surgery by waiting time (days)



Waiting time (days) for people who received surgery by urgency category

1	Urgent: ¹ 132 patients				
	Median time to receive surgery	<div><div></div>6 days</div>	5	7	6
	90th percentile time to receive surgery	<div><div></div>19 days</div>	20	24	22
2	Semi-urgent: ¹ 285 patients				
	Median time to receive surgery	<div><div></div>35 days</div>	42	31	41
	90th percentile time to receive surgery	<div><div></div>81 days</div>	82	83	82
3	Non-urgent: ² 353 patients				
	Median time to receive surgery	<div><div></div>181 days</div>	176	218	186
	90th percentile time to receive surgery	<div><div></div>357 days</div>	354	359	362

Sydney Children's Hospital, Randwick: Time waited to receive elective surgery

January to March 2018

Median⁵ waiting time (days) for patients who received elective surgery by specialty of surgeon

		Same period last year	Peer group (this period)
Cardiothoracic surgery	* (< 5 patients)	*	62
Ear, nose and throat surgery	132 days (204 patients)	211	112
General surgery	43 days (263 patients)	29	34
Gynaecology	* (< 5 patients)	*	37
Medical	6 days (18 patients)	9	8
Neurosurgery	25 days (27 patients)	18	27
Ophthalmology	102 days (35 patients)	68	73
Orthopaedic surgery	61 days (92 patients)	84	57
Plastic surgery	118 days (85 patients)	92	47
Urology	26 days (43 patients)	44	36
Vascular surgery	n/a (0 patients)	n/a	n/a

Median⁵ waiting time (days) for patients who received elective surgery by common procedures⁷

		Same period last year	Peer group (this period)
Abdominal hysterectomy	n/a (0 patients)	n/a	*
Cataract extraction	n/a (0 patients)	*	*
Cholecystectomy	n/a (0 patients)	*	*
Coronary artery bypass graft	n/a (0 patients)	n/a	n/a
Cystoscopy	31 days (14 patients)	28	34
Haemorrhoidectomy	n/a (0 patients)	n/a	n/a
Hysteroscopy	n/a (0 patients)	n/a	n/a
Inguinal herniorrhaphy	13 days (33 patients)	12	13
Myringoplasty / Tympanoplasty	* (< 5 patients)	*	*
Myringotomy	n/a (0 patients)	n/a	*
Other - General	35 days (100 patients)	32	28
Prostatectomy	n/a (0 patients)	n/a	n/a
Septoplasty	* (< 5 patients)	n/a	*
Tonsillectomy	203 days (93 patients)	223	198
Total hip replacement	n/a (0 patients)	*	n/a
Total knee replacement	n/a (0 patients)	n/a	n/a
Varicose veins stripping and ligation	n/a (0 patients)	n/a	n/a

Sydney Children's Hospital, Randwick: Elective surgery waiting list

January to March 2018

Patients ready for surgery on waiting list at start of quarter: 1,036 patients

Patients ready for surgery on waiting list at end of quarter: 901 patients

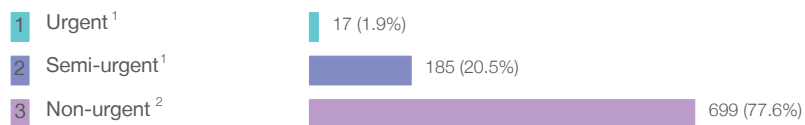
Patients not ready for surgery⁸ on waiting list at end of quarter: 183 patients

Same period last year	Change since one year ago
1,016	2%
942	-4%
174	5%

Sydney Children's Hospital, Randwick: Patients ready for elective surgery

as at 31st March 2018

Patients ready for surgery on waiting list by urgency category: 901 patients



Same period last year	Change since one year ago
14	21%
184	1%
744	-6%

Sydney Children's Hospital, Randwick: Patients ready for elective surgery

as at 31st March 2018

Patients ready for elective surgery by specialty of surgeon: 901 patients

	As at 31 Mar 2018	Same time last year	Change since one year ago
All specialties	901	942	-4%
Cardiothoracic surgery	5	< 5	*
Ear, nose and throat surgery	306	345	-11%
General surgery	243	212	15%
Gynaecology	< 5	< 5	*
Medical	6	< 5	*
Neurosurgery	19	13	46%
Ophthalmology	36	60	-40%
Orthopaedic surgery	110	123	-11%
Plastic surgery	135	126	7%
Urology	39	55	-29%
Vascular surgery	0	0	n/a

Patients ready for elective surgery for common procedures ⁷

	As at 31 Mar 2018	Same time last year	Change since one year ago
Abdominal hysterectomy	0	< 5	n/a
Cataract extraction	0	< 5	*
Cholecystectomy	< 5	< 5	*
Coronary artery bypass graft	0	< 5	n/a
Cystoscopy	8	10	-20%
Haemorrhoidectomy	0	< 5	n/a
Hysteroscopy	< 5	< 5	n/a
Inguinal herniorrhaphy	12	11	9%
Myringoplasty / Tympanoplasty	10	6	67%
Myringotomy	0	< 5	*
Other - General	108	97	11%
Prostatectomy	0	< 5	n/a
Septoplasty	< 5	< 5	*
Tonsillectomy	125	195	-36%
Total hip replacement	0	< 5	n/a
Total knee replacement	0	< 5	n/a
Varicose veins stripping and ligation	0	< 5	n/a

Sydney Children's Hospital, Randwick: Patients ready for elective surgery as at 31st March 2018

Patients ready for elective surgery, on the waiting list for longer than 12 months

As at 31 Mar 2018

Same time last year

All specialties	0	0
-----------------	---	---

- * Suppressed due to small numbers and to protect privacy. Relevant graphs are also suppressed.
- < 5 Less than five patients. For measures by urgency category, counts are included in an adjacent category. Relevant graphs are also suppressed.
1. Excluding staged procedures.
 2. Excluding staged procedures and cystoscopy.
 3. Including non-urgent cystoscopy.
 4. Excludes the total number of days the patient was coded as 'not ready for surgery'.
 5. This is the number of days it took for half of patients who received elective surgery during the period to be admitted and receive their surgery. The other half took equal to or longer than the median to be admitted for surgery.
 6. This is the number of days it took for 90% of patients who received elective surgery during the period to be admitted and receive their surgery. The final 10% of patients took equal to or longer than the 90th percentile.
 7. The procedures included in this list are procedures which are high volume; some may be associated with long waiting periods. For a description of these procedures see *Elective Surgery Glossary of Common Procedures, December 2012*.
 8. Includes staged procedures, non-urgent cystoscopy, and patients currently not available for personal reasons.
- For more information: For details of methods, see the *Technical Supplement: Elective surgery measures, January to March 2018*.
- Note:** All percentages rounded to whole numbers and therefore percentages may not add to 100%.
- Source:** Waiting List Collection On-Line System, NSW Health (extracted 13 April 2018.).