

## Ballina District Hospital: Emergency department (ED) overview

April to June 2017

All presentations:<sup>1</sup> 3,993 patients  
Emergency presentations:<sup>2</sup> 3,758 patients

Same period last year	Change since one year ago
3,823	4.4%
3,586	4.8%

## Ballina District Hospital: Time patients waited to start treatment<sup>3</sup>

April to June 2017

**Triage 2** Emergency (e.g. chest pain, severe burns): 365 patients

Median time to start treatment<sup>4</sup> 7 minutes  
90th percentile time to start treatment<sup>5</sup> 15 minutes

**Triage 3** Urgent (e.g. moderate blood loss, dehydration): 1,179 patients

Median time to start treatment<sup>4</sup> 19 minutes  
90th percentile time to start treatment<sup>5</sup> 53 minutes

**Triage 4** Semi-urgent (e.g. sprained ankle, earache): 1,938 patients

Median time to start treatment<sup>4</sup> 23 minutes  
90th percentile time to start treatment<sup>5</sup> 85 minutes

**Triage 5** Non-urgent (e.g. small cuts or abrasions): 271 patients

Median time to start treatment<sup>4</sup> 23 minutes  
90th percentile time to start treatment<sup>5</sup> 108 minutes

Same period last year	NSW (this period)
319	
8 minutes	8 minutes
22 minutes	26 minutes
1,165	
19 minutes	20 minutes
48 minutes	67 minutes
1,791	
24 minutes	25 minutes
98 minutes	99 minutes
290	
26 minutes	23 minutes
99 minutes	101 minutes

## Ballina District Hospital: Time from presentation until leaving the ED

April to June 2017

Attendances used to calculate time to leaving the ED:<sup>6</sup> 3,993 patients

Percentage of patients who spent four hours or less in the ED 75.5%

Same period last year	Change since one year ago
3,823	4.4%
73.9%	

\* Suppressed due to small number of patients and to protect privacy. Relevant graphs are also suppressed.

- All emergency and non-emergency attendances at the emergency department (ED).
- All attendances that have a triage category and are coded as emergency presentations or unplanned return visits.
- Some patients are excluded from ED time measures due to calculation requirements. For details, see the *Technical Supplement: Emergency department measures, July to September 2016*.
- The median is the time by which half of patients started treatment. The other half of patients waited equal to or longer than this time.
- The 90th percentile is the time by which 90% of patients started treatment. The final 10% of patients waited equal to or longer than this time.
- All presentations that have a departure time.

**Note:** Presentation time is the earlier time recorded for clerical registration or the triage process. Treatment time is the earliest time recorded when a healthcare professional provides medical care relevant to the patient's presenting problems.

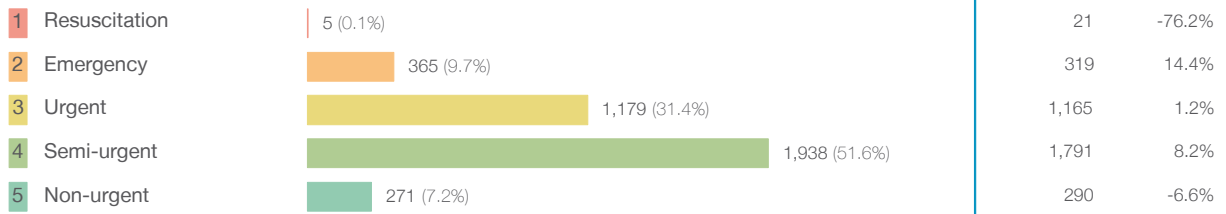
**Source:** Health Information Exchange, NSW Health (extracted 21 July 2017).

## Ballina District Hospital: Patients presenting to the emergency department

April to June 2017

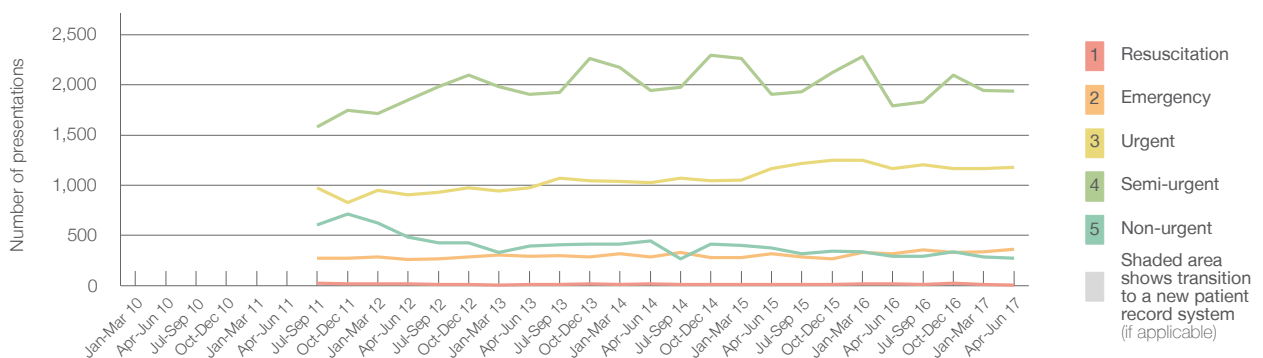
All presentations:<sup>1</sup> 3,993 patients

Emergency presentations<sup>2</sup> by triage category: 3,758 patients



Same period last year	Change since one year ago
3,823	4.4%
3,586	4.8%
21	-76.2%
319	14.4%
1,165	1.2%
1,791	8.2%
290	-6.6%

Emergency presentations<sup>2</sup> by quarter, April 2012 to June 2017 †



	Apr-Jun 2010	Apr-Jun 2011	Apr-Jun 2012	Apr-Jun 2013	Apr-Jun 2014	Apr-Jun 2015	Apr-Jun 2016	Apr-Jun 2017
Resuscitation			18	15	18	15	21	5
Emergency			261	294	283	316	319	365
Urgent			904	975	1,026	1,168	1,165	1,179
Semi-urgent			1,847	1,908	1,945	1,908	1,791	1,938
Non-urgent			483	395	445	373	290	271
All emergency presentations			3,513	3,587	3,717	3,780	3,586	3,758

## Ballina District Hospital: Patients arriving by ambulance

April to June 2017

Arrivals used to calculate transfer of care time:<sup>7</sup> 363 patients \*\*

ED Transfer of care time



Same period last year	Change since one year ago
211	
12 minutes	0 minutes
33 minutes	-6 minutes

(†) Data points are not shown in graphs for quarters when patient numbers are too small.

(‡) Caution is advised when interpreting abrupt changes over time at the hospital level. For example, performance before and after transition to a new information system is not directly comparable. For more information, see Background Paper: Approaches to reporting time measures of emergency department performance, December 2011.

(\*\*) Interpret with caution: total ambulance arrivals include more than 30% of records for which transfer of care time cannot be calculated.

## Ballina District Hospital: Time patients waited to start treatment, triage 2

April to June 2017

**Triage 2** Emergency (e.g. chest pain, severe burns)

Number of triage 2 patients: 365

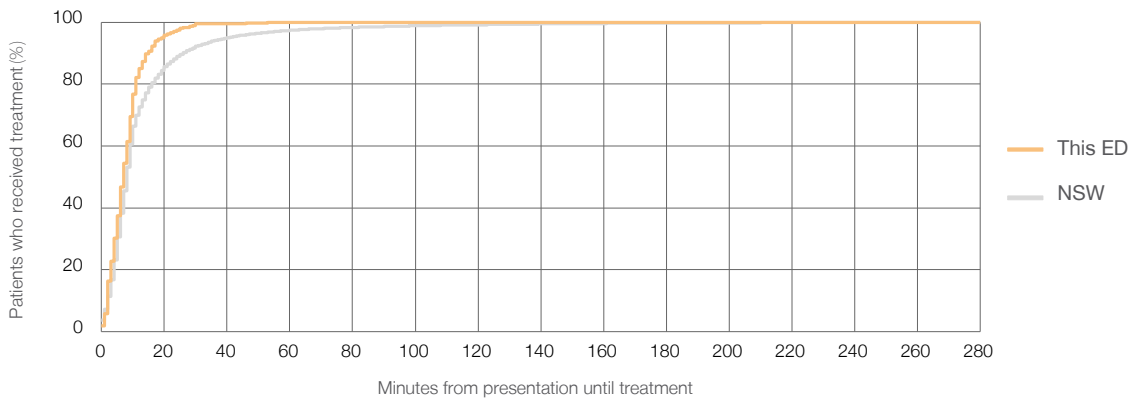
Number of triage 2 patients used to calculate waiting time:<sup>3</sup> 360

Median time to start treatment<sup>4</sup>  7 minutes

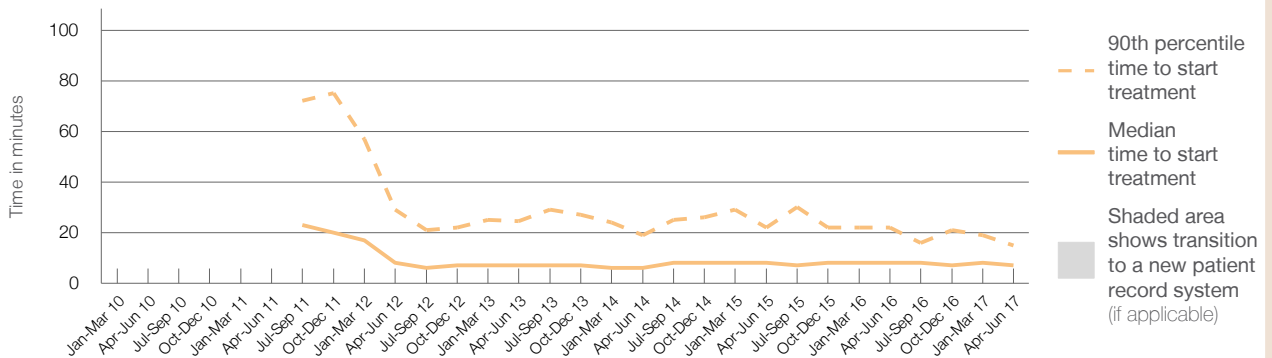
90th percentile time to start treatment<sup>5</sup>  15 minutes

Same period last year	NSW (this period)
319	
317	
8 minutes	8 minutes
22 minutes	26 minutes

### Percentage of triage 2 patients who received treatment by time, April to June 2017



### Time patients waited to start treatment (minutes) for triage 2 patients, April 2012 to June 2017<sup>†‡</sup>



	Apr-Jun 2010	Apr-Jun 2011	Apr-Jun 2012	Apr-Jun 2013	Apr-Jun 2014	Apr-Jun 2015	Apr-Jun 2016	Apr-Jun 2017
Median time to start treatment <sup>4</sup> (minutes)			8	7	6	8	8	7
90th percentile time to start treatment <sup>5</sup> (minutes)			29	25	19	22	22	15

(†) Data points are not shown in graphs for quarters when patient numbers are too small.

(‡) Caution is advised when interpreting abrupt changes over time at the hospital level. For example, performance before and after transition to a new information system is not directly comparable. For more information, see Background Paper: Approaches to reporting time measures of emergency department performance, December 2011.

## Ballina District Hospital: Time patients waited to start treatment, triage 3 April to June 2017

**Triage 3** Urgent (e.g. moderate blood loss, dehydration)

Number of triage 3 patients: 1,179

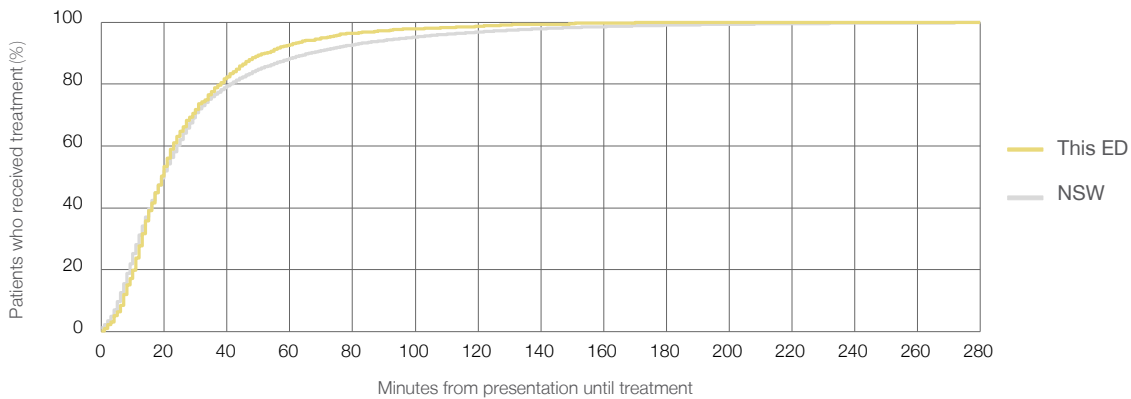
Number of triage 3 patients used to calculate waiting time:<sup>3</sup> 1,158

Median time to start treatment<sup>4</sup> 19 minutes

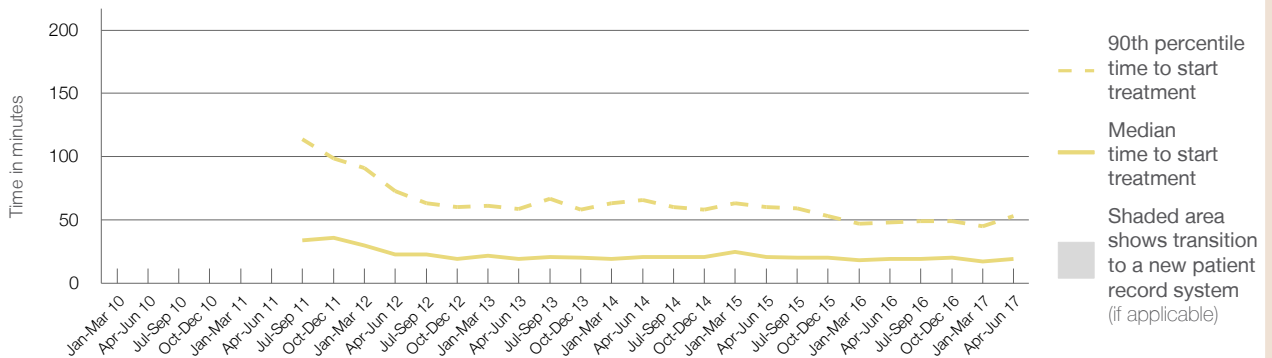
90th percentile time to start treatment<sup>5</sup> 53 minutes

Same period last year	NSW (this period)
1,165	1,128
19 minutes	20 minutes
48 minutes	67 minutes

### Percentage of triage 3 patients who received treatment by time, April to June 2017



### Time patients waited to start treatment (minutes) for triage 3 patients, April 2012 to June 2017<sup>†‡</sup>



	Apr-Jun 2010	Apr-Jun 2011	Apr-Jun 2012	Apr-Jun 2013	Apr-Jun 2014	Apr-Jun 2015	Apr-Jun 2016	Apr-Jun 2017
Median time to start treatment <sup>4</sup> (minutes)			23	19	21	21	19	19
90th percentile time to start treatment <sup>5</sup> (minutes)			73	59	66	60	48	53

(†) Data points are not shown in graphs for quarters when patient numbers are too small.

(‡) Caution is advised when interpreting abrupt changes over time at the hospital level. For example, performance before and after transition to a new information system is not directly comparable. For more information, see Background Paper: Approaches to reporting time measures of emergency department performance, December 2011.

## Ballina District Hospital: Time patients waited to start treatment, triage 4 April to June 2017

**Triage 4** Semi-urgent (e.g. sprained ankle, earache)

Number of triage 4 patients: 1,938

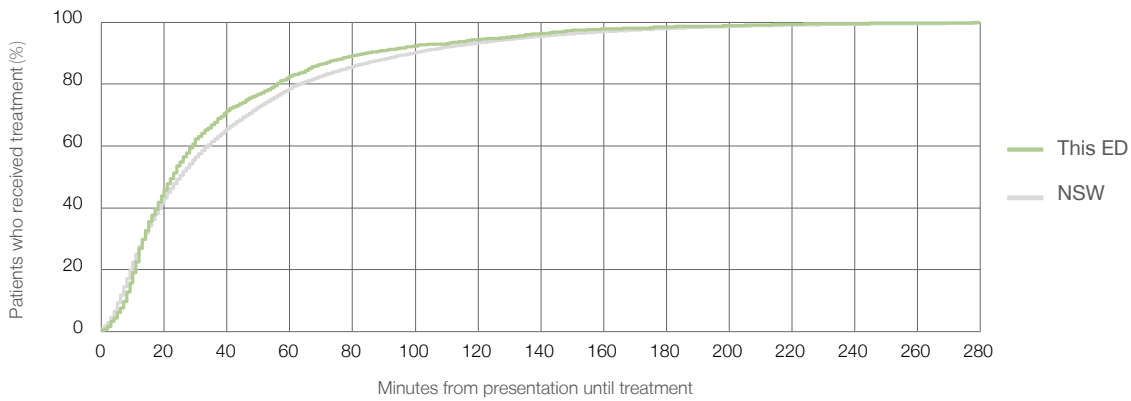
Number of triage 4 patients used to calculate waiting time:<sup>3</sup> 1,779

Median time to start treatment<sup>4</sup> 23 minutes

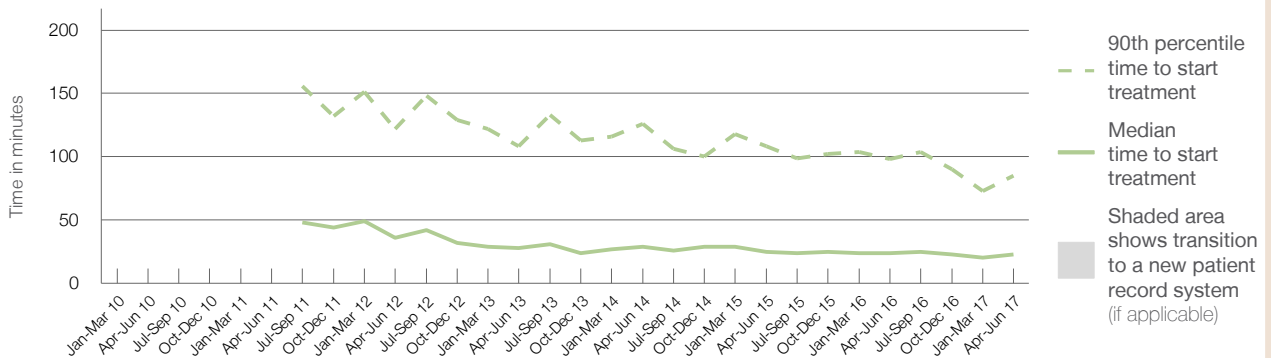
90th percentile time to start treatment<sup>5</sup> 85 minutes

Same period last year	NSW (this period)
1,791	1,588
24 minutes	25 minutes
98 minutes	99 minutes

### Percentage of triage 4 patients who received treatment by time, April to June 2017



### Time patients waited to start treatment (minutes) for triage 4 patients, April 2012 to June 2017<sup>†‡</sup>



	Apr-Jun 2010	Apr-Jun 2011	Apr-Jun 2012	Apr-Jun 2013	Apr-Jun 2014	Apr-Jun 2015	Apr-Jun 2016	Apr-Jun 2017
Median time to start treatment <sup>4</sup> (minutes)			36	28	29	25	24	23
90th percentile time to start treatment <sup>5</sup> (minutes)			122	108	126	108	98	85

(†) Data points are not shown in graphs for quarters when patient numbers are too small.

(‡) Caution is advised when interpreting abrupt changes over time at the hospital level. For example, performance before and after transition to a new information system is not directly comparable. For more information, see Background Paper: Approaches to reporting time measures of emergency department performance, December 2011.

## Ballina District Hospital: Time patients waited to start treatment, triage 5

April to June 2017

**Triage 5** Non-urgent (e.g. small cuts or abrasions)

Number of triage 5 patients: 271

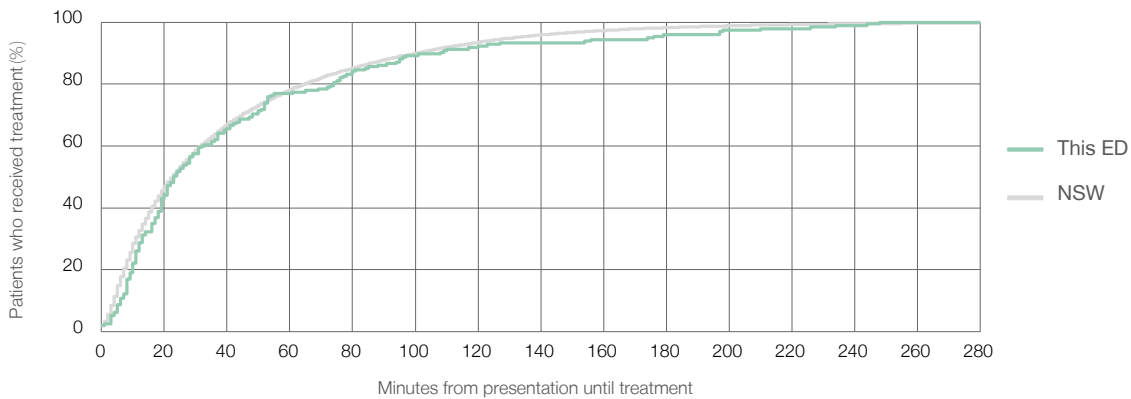
Number of triage 5 patients used to calculate waiting time:<sup>3</sup> 195

Median time to start treatment<sup>4</sup> 23 minutes

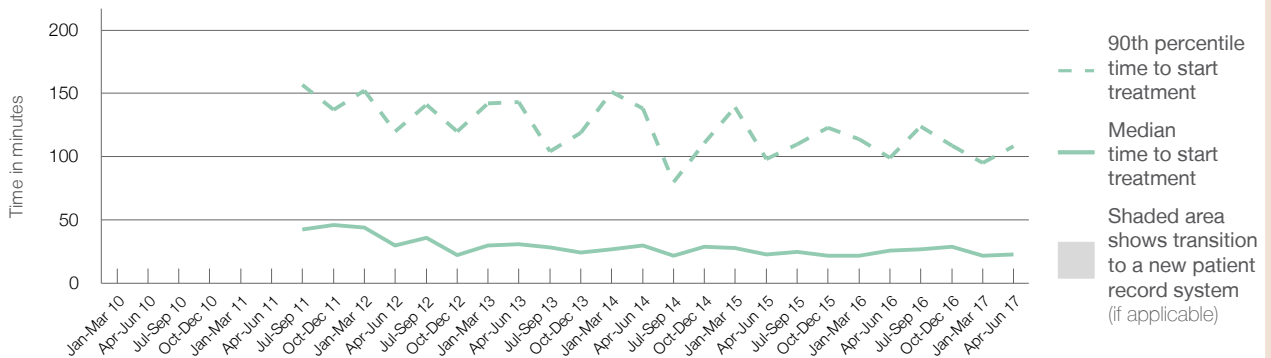
90th percentile time to start treatment<sup>5</sup> 108 minutes

Same period last year	NSW (this period)
290	203
26 minutes	23 minutes
99 minutes	101 minutes

### Percentage of triage 5 patients who received treatment by time, April to June 2017



### Time patients waited to start treatment (minutes) for triage 5 patients, April 2012 to June 2017<sup>†‡</sup>



	Apr-Jun 2010	Apr-Jun 2011	Apr-Jun 2012	Apr-Jun 2013	Apr-Jun 2014	Apr-Jun 2015	Apr-Jun 2016	Apr-Jun 2017
Median time to start treatment <sup>4</sup> (minutes)			30	31	30	23	26	23
90th percentile time to start treatment <sup>5</sup> (minutes)			120	143	138	98	99	108

(†) Data points are not shown in graphs for quarters when patient numbers are too small.

(‡) Caution is advised when interpreting abrupt changes over time at the hospital level. For example, performance before and after transition to a new information system is not directly comparable. For more information, see Background Paper: Approaches to reporting time measures of emergency department performance, December 2011.

## Ballina District Hospital: Time patients spent in the ED

April to June 2017

All presentations:<sup>1</sup> 3,993 patients

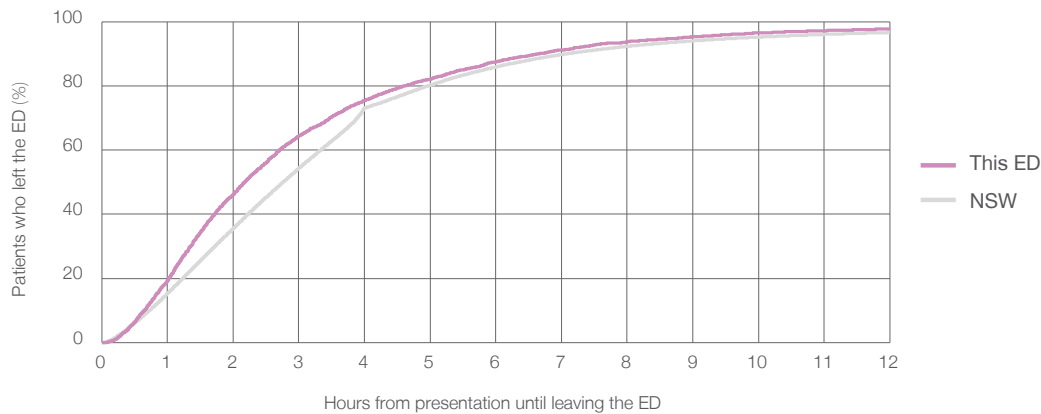
Presentations used to calculate time to leaving the ED:<sup>6</sup> 3,993 patients

Median time spent in the ED<sup>8</sup> 2 hours and 10 minutes

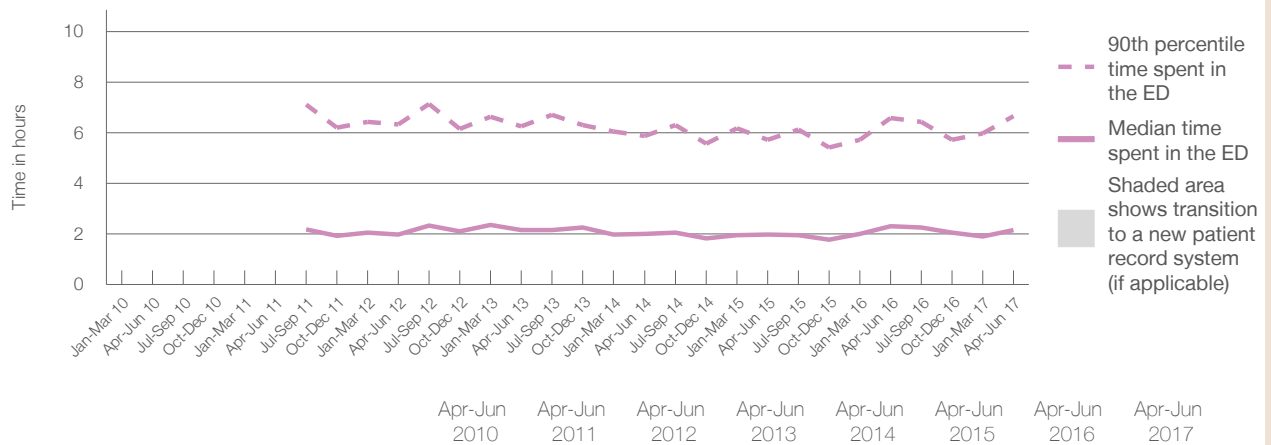
90th percentile time spent in the ED<sup>9</sup> 6 hours and 39 minutes

Same period last year	NSW (this period)
3,823	3,823
2 hours and 18 minutes	2 hours and 46 minutes
6 hours and 35 minutes	7 hours and 5 minutes

### Percentage of patients who left the ED by time, April to June 2017



### Time patients spent in the ED, by quarter, April 2012 to June 2017<sup>†‡</sup>



	Apr-Jun 2010	Apr-Jun 2011	Apr-Jun 2012	Apr-Jun 2013	Apr-Jun 2014	Apr-Jun 2015	Apr-Jun 2016	Apr-Jun 2017
Median time to leaving the ED <sup>8</sup> (hours, minutes)			1h 59m	2h 9m	2h 0m	1h 59m	2h 18m	2h 10m
90th percentile time to leaving the ED <sup>9</sup> (hours, minutes)			6h 20m	6h 16m	5h 52m	5h 43m	6h 35m	6h 39m

(†) Data points are not shown in graphs for quarters when patient numbers are too small.

(‡) Caution is advised when interpreting abrupt changes over time at the hospital level. For example, performance before and after transition to a new information system is not directly comparable. For more information, see Background Paper: Approaches to reporting time measures of emergency department performance, December 2011.

**Ballina District Hospital: Time patients spent in the ED**  
By mode of separation  
April to June 2017

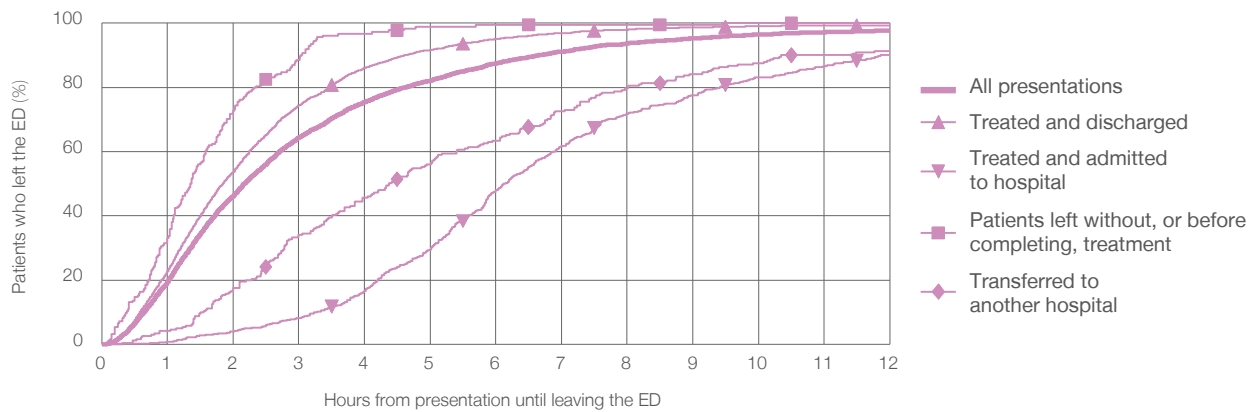
All presentations:<sup>1</sup> 3,993 patients

Presentations used to calculate time to leaving the ED:<sup>6</sup> 3,993 patients

Treated and discharged	3,057 (76.6%)
Treated and admitted to hospital	495 (12.4%)
Patient left without, or before completing, treatment	184 (4.6%)
Transferred to another hospital	241 (6.0%)
Other	16 (0.4%)

Same period last year	Change since one year ago
3,823	4.4%
2,503	22.1%
956	-48.2%
233	-21.0%
113	113.3%
18	-11.1%

Percentage of patients who left the ED by time and mode of separation, April to June 2017<sup>††</sup>



1 hour 2 hours 3 hours 4 hours 6 hours 8 hours 10 hours 12 hours

Treated and discharged	22.7%	53.7%	74.4%	86.1%	95.1%	98.0%	99.1%	99.3%
Treated and admitted to hospital	0.8%	4.0%	8.1%	16.6%	48.1%	71.7%	83.2%	90.1%
Patient left without, or before completing, treatment	33.2%	72.8%	88.6%	96.7%	99.5%	99.5%	100%	100%
Transferred to another hospital	4.1%	17.4%	34.0%	45.6%	63.5%	79.7%	87.6%	91.3%
All presentations	19.4%	46.2%	64.4%	75.5%	87.6%	93.7%	96.5%	97.7%

(†) Data points are not shown in graphs for quarters when patient numbers are too small.

(‡) Caution is advised when interpreting abrupt changes over time at the hospital level. For example, performance before and after transition to a new information system is not directly comparable. For more information, see Background Paper: Approaches to reporting time measures of emergency department performance, December 2011.



**Ballina District Hospital: Time spent in the ED**  
 Percentage of patients who spent four hours or less in the ED  
 April to June 2017

All presentations at the emergency department:<sup>1</sup> 3,993 patients

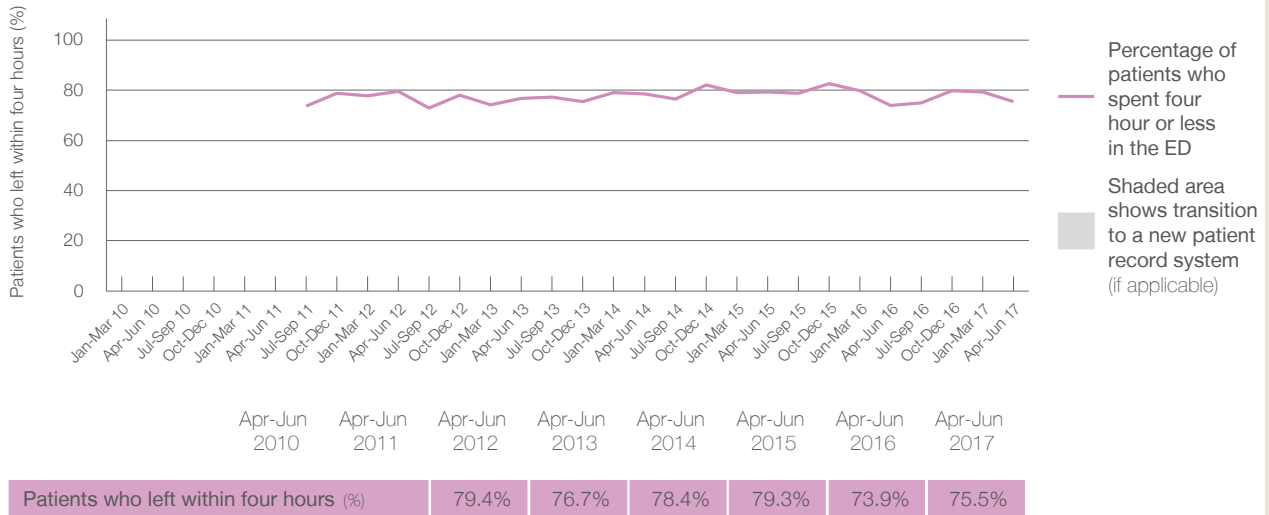
Presentations used to calculate time to leaving the ED:<sup>6</sup> 3,993 patients

Percentage of patients who spent four hours or less in the ED



	Same period last year	Change since one year ago
All presentations at the emergency department: <sup>1</sup>	3,823	4.4%
Presentations used to calculate time to leaving the ED: <sup>6</sup>	3,823	4.4%
Percentage of patients who spent four hours or less in the ED	73.9%	

Percentage of patients who spent four hours or less in the ED, by quarter, April 2012 to June 2017<sup>†‡</sup>



\* Suppressed due to small numbers and to protect privacy. Relevant graphs are also suppressed.

† Data points are not shown in graphs for quarters when patient numbers were too small.

‡ Caution is advised when interpreting abrupt changes over time at the hospital level. For example, performance before and after transition to a new information system is not directly comparable. For more information see *Background Paper: Approaches to reporting time measures of emergency department performance, December 2011*.

- All emergency and non-emergency presentations at the emergency department (ED).
- All presentations that have a triage category and are coded as emergency presentations or unplanned return visits.
- Some patients are excluded from ED time measures due to calculation requirements. For details, see the *Technical Supplement: Emergency department measures, July to September 2016*.
- The median is the time by which half of patients started treatment. The other half of patients took equal to or longer than this time.
- The 90th percentile is the time by which 90% of patients started treatment. The final 10% of patients took equal to or longer than this time.
- All presentations that have a departure time.
- Transfer of care time refers to the period between arrival of patients at the ED by ambulance and the transfer of responsibility for their care from paramedics to ED staff in an ED treatment zone. For more information see *Spotlight on Measurement: measuring transfer of care from the ambulance to the emergency department*.
- The median is the time by which half of patients left the ED. The other half of patients took equal to or longer than this time.
- The 90th percentile is the time by which 90% of patients left the ED. The final 10% of patients took equal to or longer than this time.

**Note:** Presentation time is the earlier of times recorded for the start of clerical registration or the triage process.  
 Treatment time is the earliest time recorded when a healthcare professional provides medical care that is relevant to the patient's presenting problems. For patients who were treated and discharged, departure time is the time when treatment was completed. For all other patients, departure time is the time when the patient actually left the ED.

**Note:** All percentages are rounded and therefore percentages may not add to 100%.

**Sources:** ED data from Health Information Exchange, NSW Health (extracted 21 July 2017).  
 Transfer of care data from Transfer of Care Reporting System (extracted 21 July 2017).