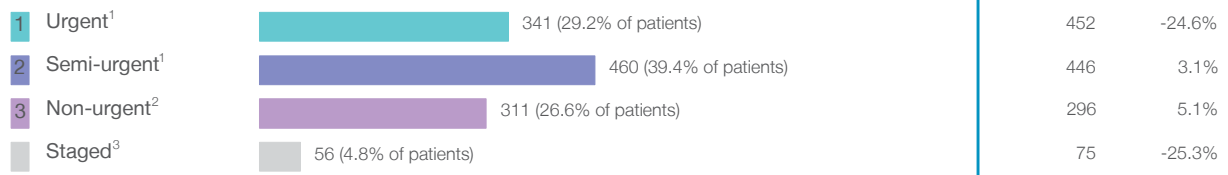


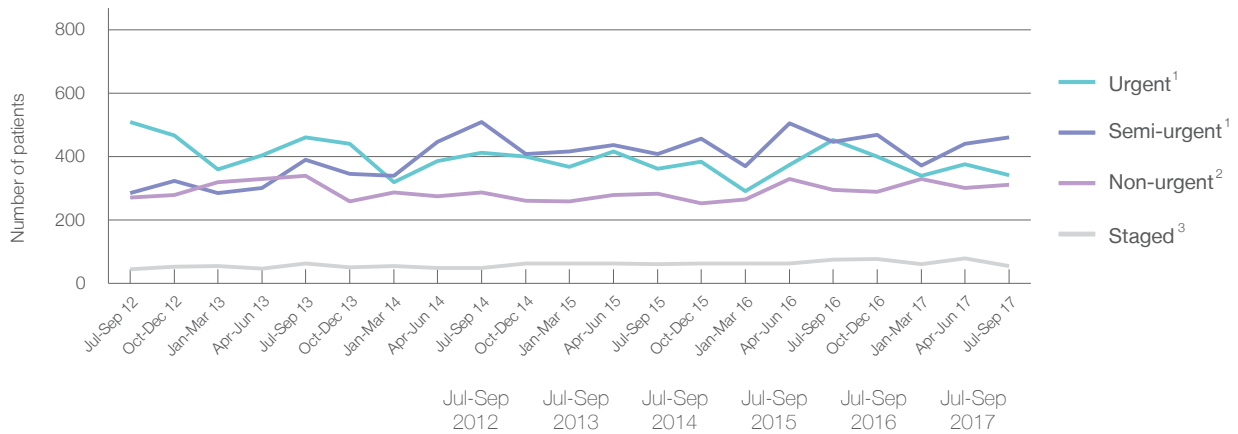
St George Hospital: Elective surgery performed

July to September 2017

Patients who received elective surgery by urgency category: 1,168 patients



Patients who received elective surgery by urgency category by quarter, July 2012 to September 2017



Urgency Category	Jul-Sep 2012	Jul-Sep 2013	Jul-Sep 2014	Jul-Sep 2015	Jul-Sep 2016	Jul-Sep 2017
All categories	1,112	1,255	1,258	1,114	1,269	1,168
Urgent ¹	510	461	412	361	452	341
Semi-urgent ¹	285	391	509	408	446	460
Non-urgent ²	271	339	287	283	296	311
Staged ³	46	64	50	62	75	56

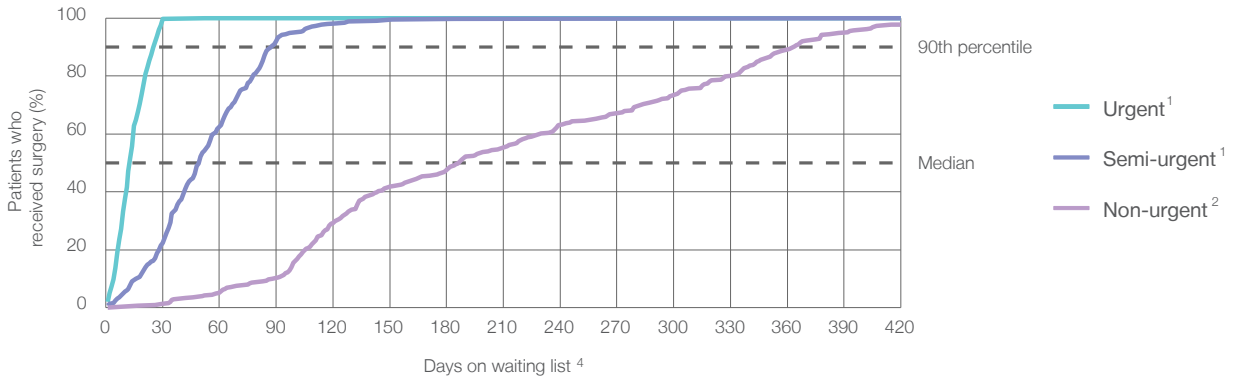
St George Hospital: Time waited to receive elective surgery

July to September 2017

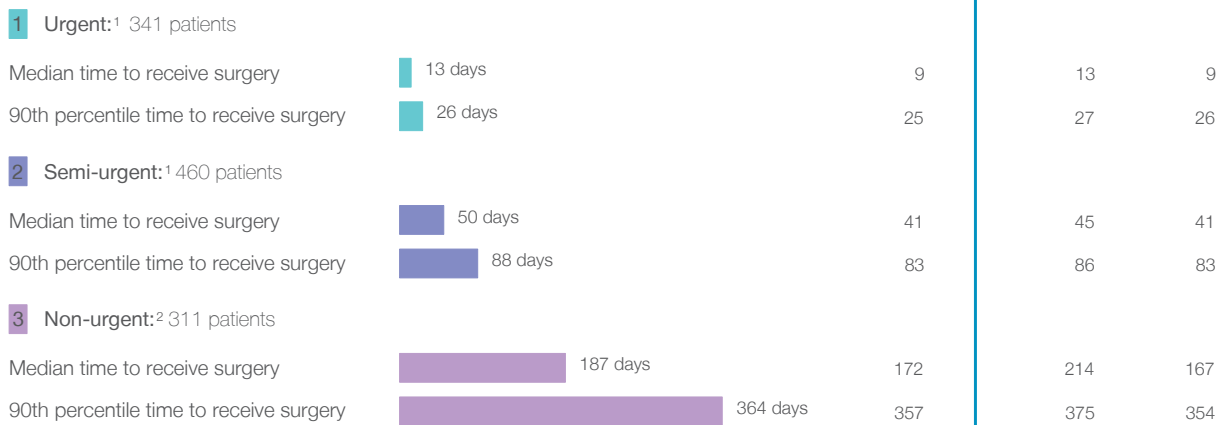
Percentage of patients who received surgery within the clinically recommended timeframe



Percentage of patients who received elective surgery by waiting time (days)



Waiting time (days) for people who received surgery by urgency category



St George Hospital: Time waited to receive elective surgery

July to September 2017

Median⁵ waiting time (days) for patients who received elective surgery by specialty of surgeon

		Same period last year	Peer group (this period)
Cardiothoracic surgery	20 days (46 patients)	45	20
Ear, nose and throat surgery	86 days (60 patients)	113	140
General surgery	48 days (417 patients)	30	28
Gynaecology	62 days (211 patients)	41	30
Medical	* (< 5 patients)	*	21
Neurosurgery	43 days (43 patients)	34	44
Ophthalmology	n/a (0 patients)	n/a	95
Orthopaedic surgery	35 days (26 patients)	10	75
Plastic surgery	62 days (94 patients)	29	20
Urology	35 days (226 patients)	38	33
Vascular surgery	19 days (42 patients)	22	18

Median⁵ waiting time (days) for patients who received elective surgery by common procedures⁷

		Same period last year	Peer group (this period)
Abdominal hysterectomy	78 days (22 patients)	57	57
Cataract extraction	n/a (0 patients)	n/a	131
Cholecystectomy	57 days (32 patients)	69	40
Coronary artery bypass graft	42 days (15 patients)	68	27
Cystoscopy	26 days (69 patients)	29	29
Haemorrhoidectomy	118 days (12 patients)	*	60
Hysteroscopy	65 days (92 patients)	37	29
Inguinal herniorrhaphy	237 days (44 patients)	330	70
Myringoplasty / Tympanoplasty	* (< 5 patients)	*	331
Myringotomy	* (< 5 patients)	*	67
Other - General	49 days (58 patients)	29	18
Prostatectomy	56 days (35 patients)	75	69
Septoplasty	* (9 patients)	*	335
Tonsillectomy	328 days (10 patients)	292	326
Total hip replacement	* (< 5 patients)	n/a	137
Total knee replacement	* (< 5 patients)	n/a	232
Varicose veins stripping and ligation	* (7 patients)	170	81

St George Hospital: Elective surgery waiting list

July to September 2017

Patients ready for surgery on waiting list at start of quarter: 1,240 patients

Patients ready for surgery on waiting list at end of quarter: 1,246 patients

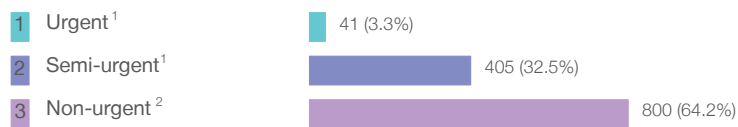
Patients not ready for surgery⁸ on waiting list at end of quarter: 309 patients

	Same period last year	Change since one year ago
Patients ready for surgery on waiting list at start of quarter	1,250	-0.8%
Patients ready for surgery on waiting list at end of quarter	1,291	-3.5%
Patients not ready for surgery ⁸ on waiting list at end of quarter	225	37.3%

St George Hospital: Patients ready for elective surgery

as at 30th September 2017

Patients ready for surgery on waiting list by urgency category: 1,246 patients



	Same period last year	Change since one year ago
Urgent ¹	63	-34.9%
Semi-urgent ¹	408	-0.7%
Non-urgent ²	820	-2.4%

St George Hospital: Patients ready for elective surgery as at 30th September 2017

Patients ready for elective surgery by specialty of surgeon: 1,246 patients

	As at 30 Sep 2017	Same time last year	Change since one year ago
All specialties	1,246	1,291	-3.5%
Cardiothoracic surgery	33	21	57.1%
Ear, nose and throat surgery	153	118	29.7%
General surgery	477	495	-3.6%
Gynaecology	233	238	-2.1%
Medical	0	< 5	*
Neurosurgery	31	45	-31.1%
Ophthalmology	0	0	n/a
Orthopaedic surgery	80	60	33.3%
Plastic surgery	56	55	1.8%
Urology	161	204	-21.1%
Vascular surgery	22	54	-59.3%

Patients ready for elective surgery for common procedures⁷

	As at 30 Sep 2017	Same time last year	Change since one year ago
Abdominal hysterectomy	30	43	-30.2%
Cataract extraction	0	< 5	n/a
Cholecystectomy	55	55	0.0%
Coronary artery bypass graft	13	10	30.0%
Cystoscopy	32	45	-28.9%
Haemorrhoidectomy	6	13	-53.8%
Hysteroscopy	85	87	-2.3%
Inguinal herniorrhaphy	117	148	-20.9%
Myringoplasty / Tympanoplasty	< 5	< 5	*
Myringotomy	< 5	5	*
Other - General	50	54	-7.4%
Prostatectomy	28	36	-22.2%
Septoplasty	9	8	12.5%
Tonsillectomy	75	56	33.9%
Total hip replacement	0	< 5	n/a
Total knee replacement	< 5	< 5	*
Varicose veins stripping and ligation	19	41	-53.7%

St George Hospital: Patients ready for elective surgery as at 30th September 2017

Patients ready for elective surgery, on the waiting list for longer than 12 months

As at 30 Sep 2017 Same time last year

	As at 30 Sep 2017	Same time last year
All specialties	17	20

* Suppressed due to small numbers and to protect privacy. Relevant graphs are also suppressed.

< 5 Less than five patients. For measures by urgency category, counts are included in an adjacent category. Relevant graphs are also suppressed.

1. Excluding staged procedures.
2. Excluding staged procedures and cystoscopy.
3. Including non-urgent cystoscopy.
4. Excludes the total number of days the patient was coded as 'not ready for surgery'.
5. This is the number of days it took for half of patients who received elective surgery during the period to be admitted and receive their surgery. The other half took equal to or longer than the median to be admitted for surgery.
6. This is the number of days it took for 90% of patients who received elective surgery during the period to be admitted and receive their surgery. The final 10% of patients took equal to or longer than the 90th percentile.
7. The procedures included in this list are procedures which are high volume; some may be associated with long waiting periods. For a description of these procedures see *Elective Surgery Glossary of Common Procedures, December 2012*.
8. Includes staged procedures, non-urgent cystoscopy, and patients currently not available for personal reasons.

For more information: For details of methods, see the *Technical Supplement: Elective surgery measures, July to September 2016*.

Note: All percentages rounded to whole numbers and therefore percentages may not add to 100%.

Source: Waiting List Collection On-Line System, NSW Health (extracted 16 Oct 2017.).