

Fairfield Hospital: Emergency department (ED) overview

January to March 2018

All presentations:¹ 8,784 patients

Emergency presentations:² 8,765 patients

Same period last year	Change since one year ago
8,783	0%
8,760	0%

Fairfield Hospital: Time patients waited to start treatment³

January to March 2018

Triage 2 Emergency (e.g. chest pain, severe burns): 883 patients

Median time to start treatment⁴ 10 minutes

90th percentile time to start treatment⁵ 23 minutes

Triage 3 Urgent (e.g. moderate blood loss, dehydration): 3,251 patients

Median time to start treatment⁴ 18 minutes

90th percentile time to start treatment⁵ 75 minutes

Triage 4 Semi-urgent (e.g. sprained ankle, earache): 3,899 patients

Median time to start treatment⁴ 21 minutes

90th percentile time to start treatment⁵ 123 minutes

Triage 5 Non-urgent (e.g. small cuts or abrasions): 708 patients

Median time to start treatment⁴ 18 minutes

90th percentile time to start treatment⁵ 114 minutes

Same period last year	NSW (this period)
824	
10 minutes	8 minutes
24 minutes	23 minutes
3,230	
20 minutes	20 minutes
65 minutes	65 minutes
4,044	
22 minutes	25 minutes
120 minutes	98 minutes
641	
21 minutes	22 minutes
120 minutes	97 minutes

Fairfield Hospital: Time from presentation until leaving the ED

January to March 2018

Attendances used to calculate time to leaving the ED:⁶ 8,784 patients

Percentage of patients who spent four hours or less in the ED 79%

Same period last year	Change since one year ago
8,783	0%
79%	

* Suppressed due to small number of patients and to protect privacy. Relevant graphs are also suppressed.

1. All emergency and non-emergency attendances at the emergency department (ED).
2. All attendances that have a triage category and are coded as emergency presentations or unplanned return visits.
3. Some patients are excluded from ED time measures due to calculation requirements. For details, see the *Technical Supplement: Emergency department measures, January to March 2018*.
4. The median is the time by which half of patients started treatment. The other half of patients waited equal to or longer than this time.
5. The 90th percentile is the time by which 90% of patients started treatment. The final 10% of patients waited equal to or longer than this time.
6. All presentations that have a departure time.

Note: Presentation time is the earlier time recorded for clerical registration or the triage process. Treatment time is the earliest time recorded when a healthcare professional provides medical care relevant to the patient's presenting problems.

Source: Health Information Exchange, NSW Health (extracted 17 April 2018).

Fairfield Hospital: Patients presenting to the emergency department

January to March 2018

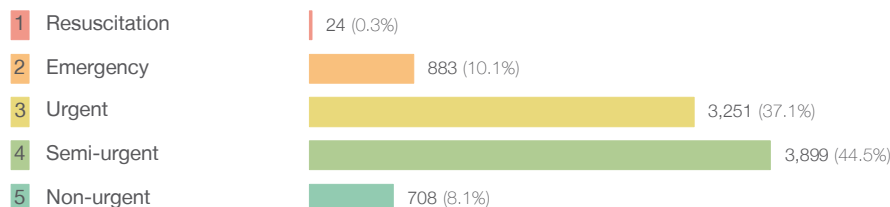
All presentations:¹ 8,784 patients

Same period last year Change since one year ago

8,783 0%

Emergency presentations² by triage category: 8,765 patients

8,760 0%



21 14.3%

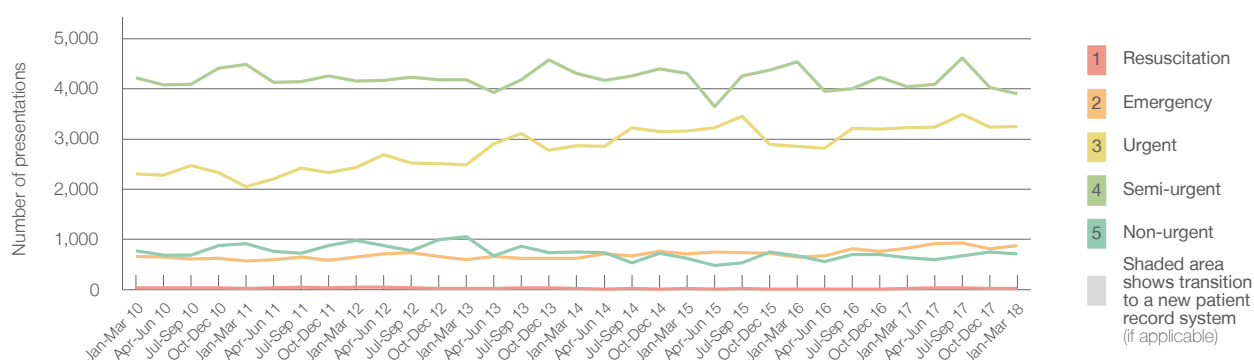
824 7.2%

3,230 0.7%

4,044 -3.6%

641 10.5%

Emergency presentations² by quarter, January 2010 to March 2018 [‡]



	Jan-Mar 2010	Jan-Mar 2011	Jan-Mar 2012	Jan-Mar 2013	Jan-Mar 2014	Jan-Mar 2015	Jan-Mar 2016	Jan-Mar 2017	Jan-Mar 2018
Resuscitation	35	26	46	25	26	19	13	21	24
Emergency	667	566	652	596	621	707	652	824	883
Urgent	2,302	2,054	2,437	2,482	2,869	3,160	2,855	3,230	3,251
Semi-urgent	4,217	4,490	4,160	4,177	4,314	4,305	4,537	4,044	3,899
Non-urgent	778	922	977	1,051	751	623	674	641	708
All emergency presentations	7,999	8,058	8,272	8,331	8,581	8,814	8,731	8,760	8,765

Fairfield Hospital: Patients arriving by ambulance

January to March 2018

Arrivals used to calculate transfer of care time: ⁷ 1,678 patients

Same period last year Change since one year ago

1,305

ED Transfer of care time

Median time 12 minutes

11 minutes 1 minute

90th percentile time 26 minutes

27 minutes -1 minute

(†) Data points are not shown in graphs for quarters when patient numbers are too small.

(‡) Caution is advised when interpreting abrupt changes over time at the hospital level. For example, performance before and after transition to a new information system is not directly comparable. For more information, see Background Paper: Approaches to reporting time measures of emergency department performance, December 2011.

Fairfield Hospital: Time patients waited to start treatment, triage 2

January to March 2018

Triage 2 Emergency (e.g. chest pain, severe burns)

Number of triage 2 patients: 883

Number of triage 2 patients used to calculate waiting time:³ 879

Median time to start treatment⁴

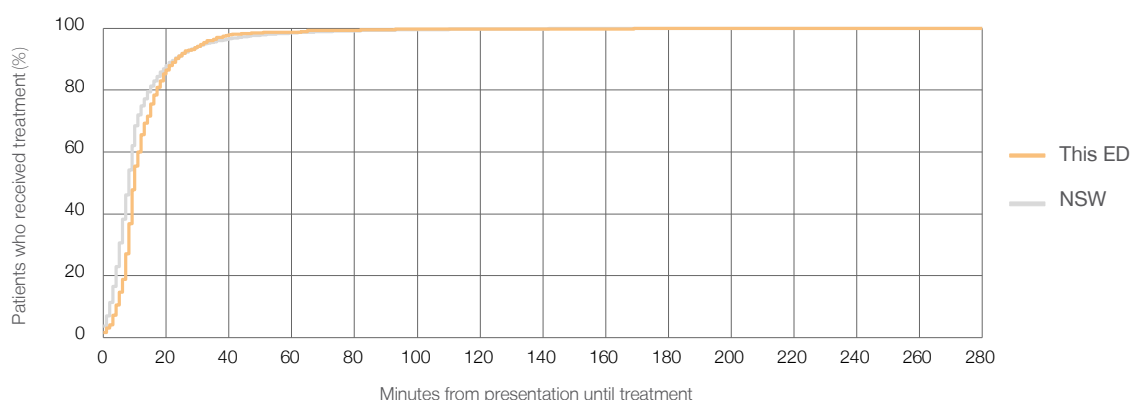
10 minutes

90th percentile time to start treatment⁵

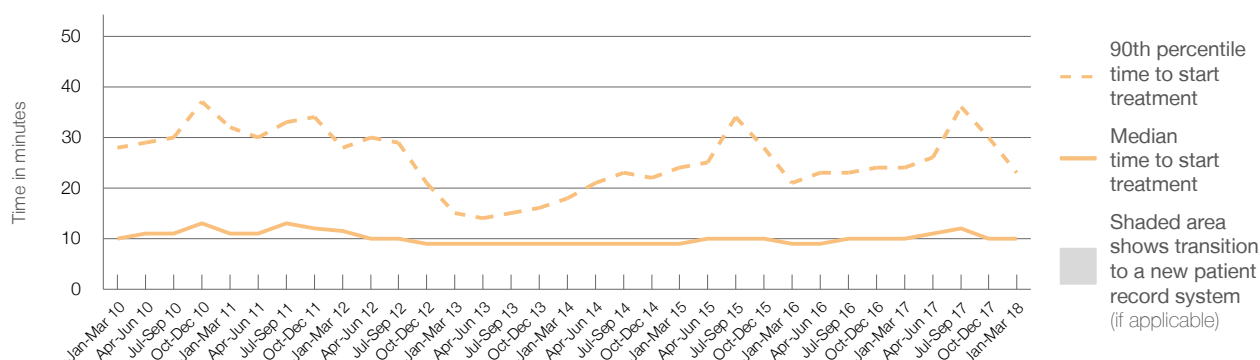
23 minutes

Same period last year	NSW (this period)
824	
819	
10 minutes	8 minutes
24 minutes	23 minutes

Percentage of triage 2 patients who received treatment by time, January to March 2018



Time patients waited to start treatment (minutes) for triage 2 patients, January 2010 to March 2018^{†‡}



	Jan-Mar 2010	Jan-Mar 2011	Jan-Mar 2012	Jan-Mar 2013	Jan-Mar 2014	Jan-Mar 2015	Jan-Mar 2016	Jan-Mar 2017	Jan-Mar 2018
Median time to start treatment ⁴ (minutes)	10	11	12	9	9	9	9	10	10
90th percentile time to start treatment ⁵ (minutes)	28	32	28	15	18	24	21	24	23

(†) Data points are not shown in graphs for quarters when patient numbers are too small.

(‡) Caution is advised when interpreting abrupt changes over time at the hospital level. For example, performance before and after transition to a new information system is not directly comparable. For more information, see Background Paper: Approaches to reporting time measures of emergency department performance, December 2011.

Fairfield Hospital: Time patients waited to start treatment, triage 3

January to March 2018

Triage 3 Urgent (e.g. moderate blood loss, dehydration)

Number of triage 3 patients: 3,251

Number of triage 3 patients used to calculate waiting time:³ 3,152

Median time to start treatment⁴

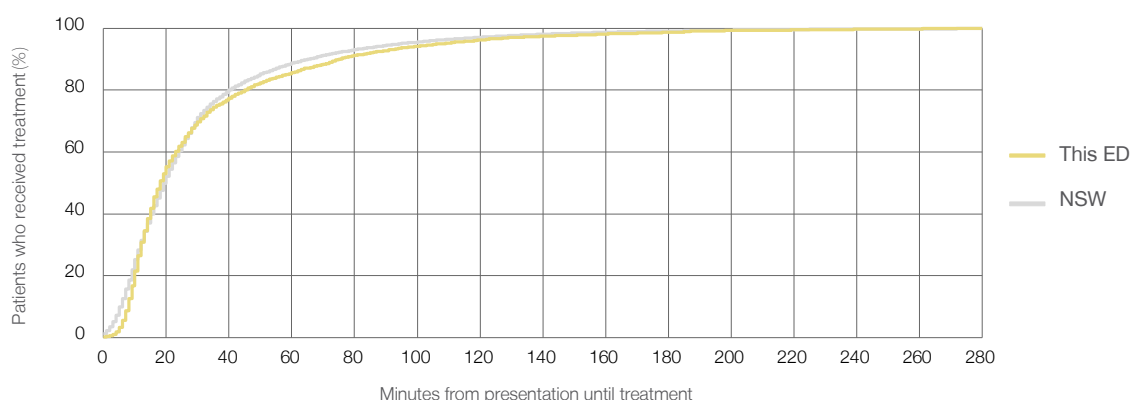
18 minutes

90th percentile time to start treatment⁵

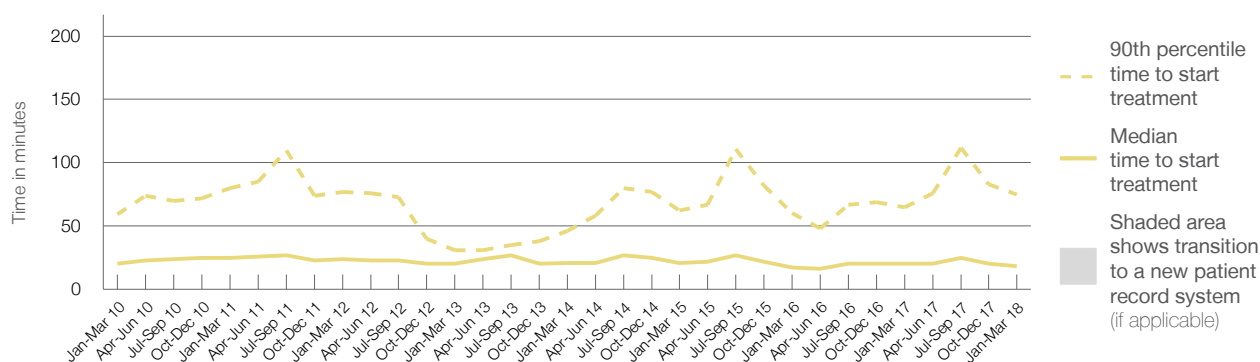
75 minutes

Same period last year	NSW (this period)
3,230	
3,161	
20 minutes	20 minutes
65 minutes	65 minutes

Percentage of triage 3 patients who received treatment by time, January to March 2018



Time patients waited to start treatment (minutes) for triage 3 patients, January 2010 to March 2018^{†‡}



	Jan-Mar 2010	Jan-Mar 2011	Jan-Mar 2012	Jan-Mar 2013	Jan-Mar 2014	Jan-Mar 2015	Jan-Mar 2016	Jan-Mar 2017	Jan-Mar 2018
Median time to start treatment ⁴ (minutes)	20	25	24	20	21	21	17	20	18
90th percentile time to start treatment ⁵ (minutes)	59	80	77	31	46	62	60	65	75

(†) Data points are not shown in graphs for quarters when patient numbers are too small.

(‡) Caution is advised when interpreting abrupt changes over time at the hospital level. For example, performance before and after transition to a new information system is not directly comparable. For more information, see Background Paper: Approaches to reporting time measures of emergency department performance, December 2011.

Fairfield Hospital: Time patients waited to start treatment, triage 4

January to March 2018

Triage 4 Semi-urgent (e.g. sprained ankle, earache)

Number of triage 4 patients: 3,899

Number of triage 4 patients used to calculate waiting time: ³ 3,483

Median time to start treatment ⁴

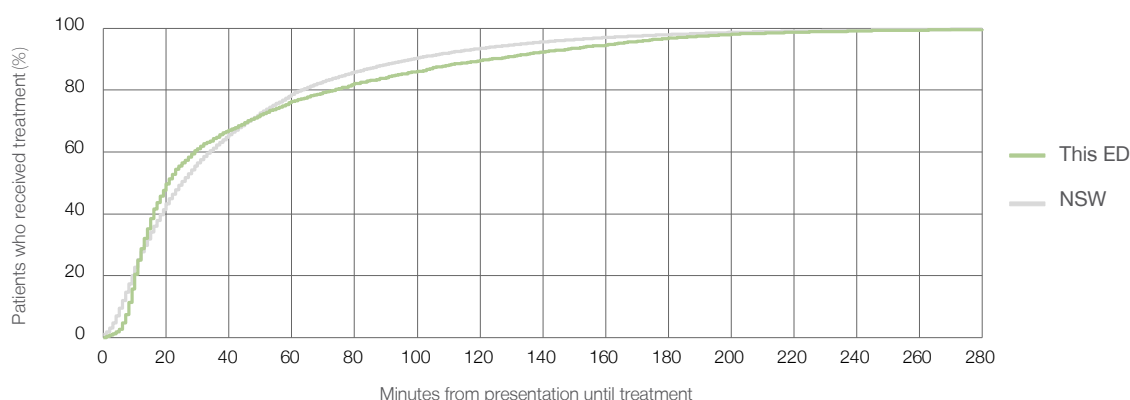
21 minutes

90th percentile time to start treatment ⁵

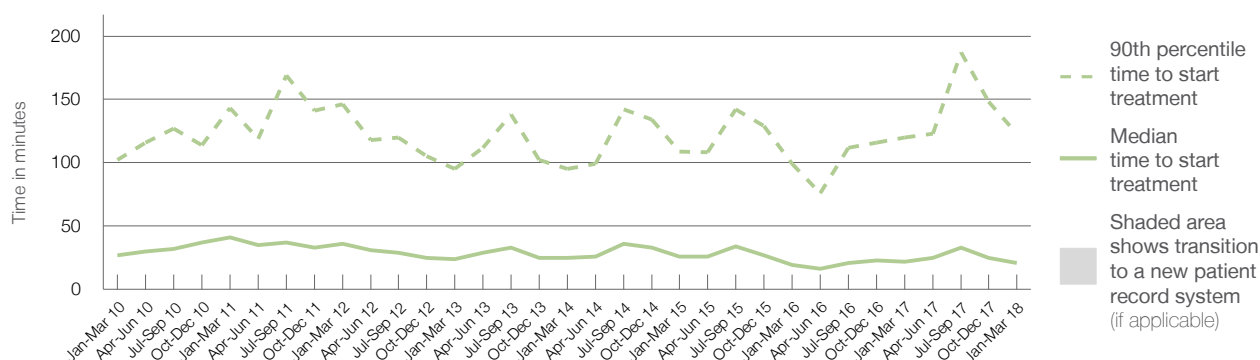
123 minutes

Same period last year	NSW (this period)
4,044	
3,796	
22 minutes	25 minutes
120 minutes	98 minutes

Percentage of triage 4 patients who received treatment by time, January to March 2018



Time patients waited to start treatment (minutes) for triage 4 patients, January 2010 to March 2018 ^{†‡}



	Jan-Mar 2010	Jan-Mar 2011	Jan-Mar 2012	Jan-Mar 2013	Jan-Mar 2014	Jan-Mar 2015	Jan-Mar 2016	Jan-Mar 2017	Jan-Mar 2018
Median time to start treatment ⁴ (minutes)	27	41	36	24	25	26	19	22	21
90th percentile time to start treatment ⁵ (minutes)	102	143	146	95	95	109	99	120	123

(†) Data points are not shown in graphs for quarters when patient numbers are too small.

(‡) Caution is advised when interpreting abrupt changes over time at the hospital level. For example, performance before and after transition to a new information system is not directly comparable. For more information, see Background Paper: Approaches to reporting time measures of emergency department performance, December 2011.

Fairfield Hospital: Time patients waited to start treatment, triage 5

January to March 2018

Triage 5 Non-urgent (e.g. small cuts or abrasions)

Number of triage 5 patients: 708

Number of triage 5 patients used to calculate waiting time:³ 554

Median time to start treatment⁴

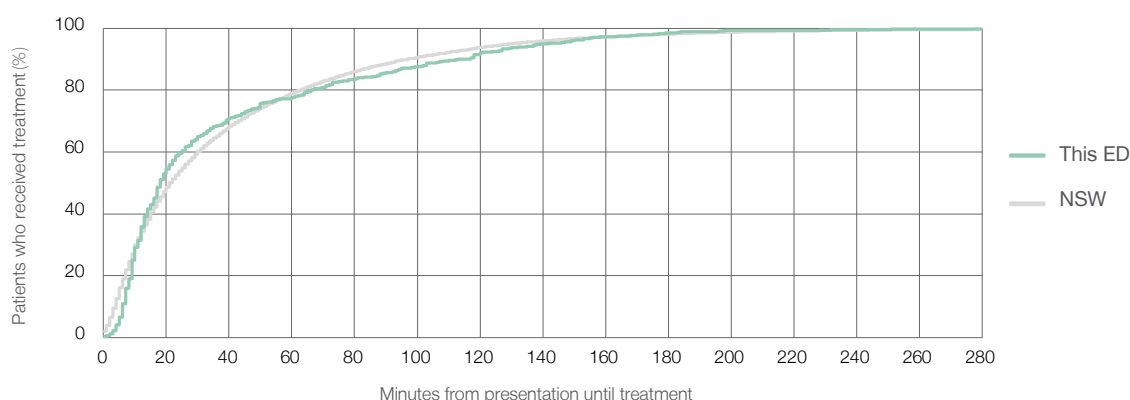
18 minutes

90th percentile time to start treatment⁵

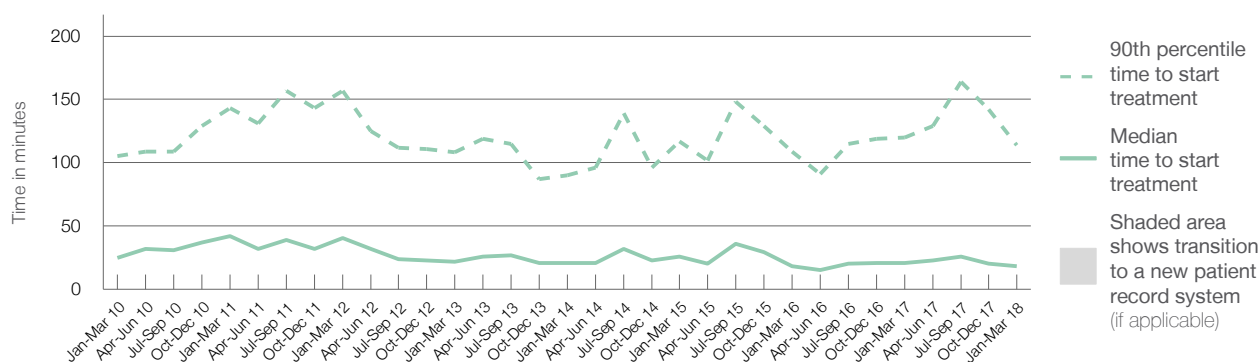
114 minutes

Same period last year	NSW (this period)
641	
497	
21 minutes	22 minutes
120 minutes	97 minutes

Percentage of triage 5 patients who received treatment by time, January to March 2018



Time patients waited to start treatment (minutes) for triage 5 patients, January 2010 to March 2018^{†‡}



	Jan-Mar 2010	Jan-Mar 2011	Jan-Mar 2012	Jan-Mar 2013	Jan-Mar 2014	Jan-Mar 2015	Jan-Mar 2016	Jan-Mar 2017	Jan-Mar 2018
Median time to start treatment ⁴ (minutes)	25	42	41	22	21	26	18	21	18
90th percentile time to start treatment ⁵ (minutes)	105	143	157	108	90	117	109	120	114

(†) Data points are not shown in graphs for quarters when patient numbers are too small.

(‡) Caution is advised when interpreting abrupt changes over time at the hospital level. For example, performance before and after transition to a new information system is not directly comparable. For more information, see Background Paper: Approaches to reporting time measures of emergency department performance, December 2011.

Fairfield Hospital: Time patients spent in the ED

January to March 2018

All presentations:¹ 8,784 patients

Presentations used to calculate time to leaving the ED:⁶ 8,784 patients

Median time spent in the ED⁸

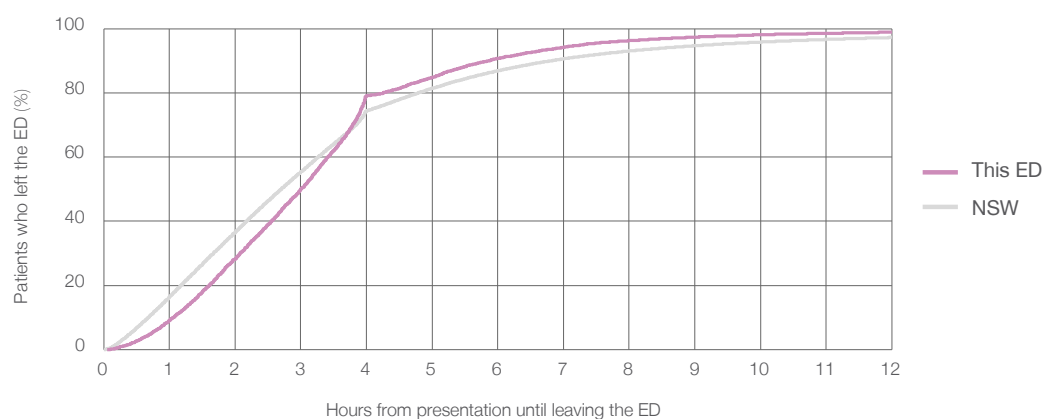
3 hours and 0 minutes

90th percentile time spent in the ED⁹

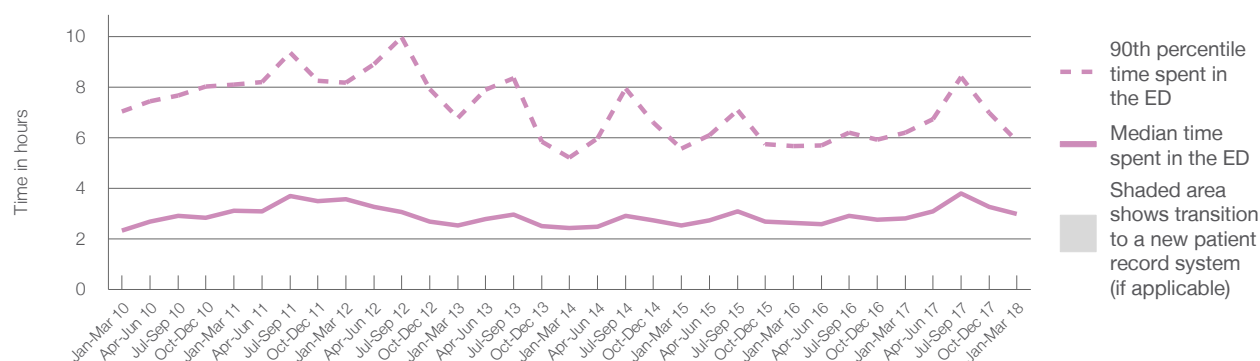
5 hours and 52 minutes

Same period last year	NSW (this period)
8,783	
8,783	
2 hours and 49 minutes	2 hours and 42 minutes
6 hours and 13 minutes	6 hours and 49 minutes

Percentage of patients who left the ED by time, January to March 2018



Time patients spent in the ED, by quarter, January 2010 to March 2018^{†‡}



	Jan-Mar 2010	Jan-Mar 2011	Jan-Mar 2012	Jan-Mar 2013	Jan-Mar 2014	Jan-Mar 2015	Jan-Mar 2016	Jan-Mar 2017	Jan-Mar 2018
Median time spent in the ED ⁸ (hours, minutes)	2h 21m	3h 8m	3h 34m	2h 32m	2h 26m	2h 33m	2h 39m	2h 49m	3h 0m
90th percentile time spent in the ED ⁹ (hours, minutes)	7h 3m	8h 6m	8h 11m	6h 47m	5h 13m	5h 34m	5h 40m	6h 13m	5h 52m

(†) Data points are not shown in graphs for quarters when patient numbers are too small.

(‡) Caution is advised when interpreting abrupt changes over time at the hospital level. For example, performance before and after transition to a new information system is not directly comparable. For more information, see Background Paper: Approaches to reporting time measures of emergency department performance, December 2011.

Fairfield Hospital: Time patients spent in the ED

By mode of separation

January to March 2018

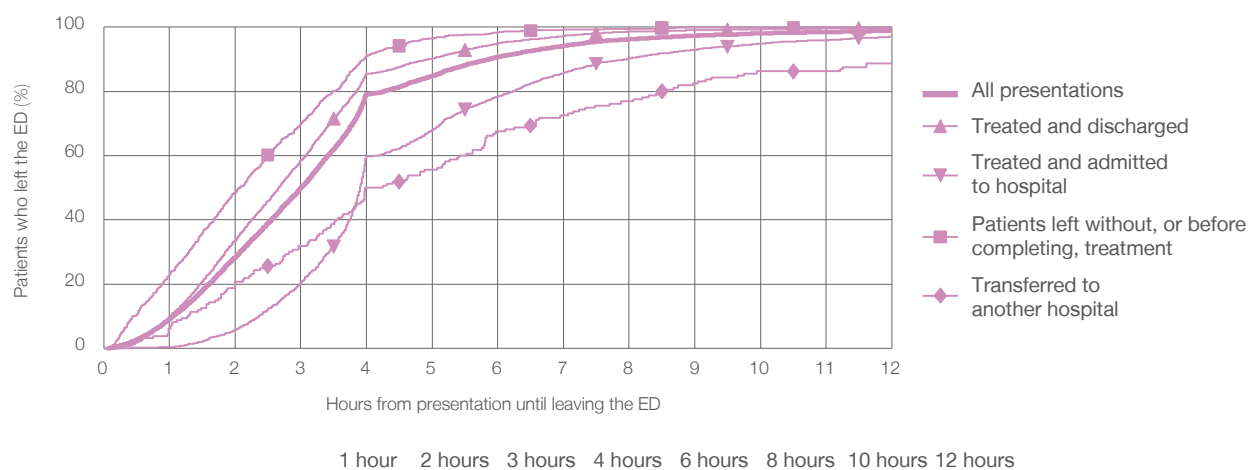
All presentations:[†] 8,784 patients

Presentations used to calculate time to leaving the ED:[‡] 8,784 patients

Treated and discharged	5,409 (61.6%)
Treated and admitted to hospital	2,189 (24.9%)
Patient left without, or before completing, treatment	963 (11.0%)
Transferred to another hospital	160 (1.8%)
Other	63 (0.7%)

Same period last year	Change since one year ago
8,783	0%
5,684	-4.8%
2,014	8.7%
820	17.4%
185	-13.5%
80	-21.3%

Percentage of patients who left the ED by time and mode of separation, January to March 2018^{†‡}



Treated and discharged	9.7%	33.5%	58.6%	85.5%	94.9%	98.6%	99.4%	99.7%
Treated and admitted to hospital	0.3%	5.8%	20.3%	59.8%	78.4%	90.3%	94.9%	97.1%
Patient left without, or before completing, treatment	22.8%	48.5%	69.9%	91.2%	98.4%	99.6%	99.9%	99.9%
Transferred to another hospital	6.3%	20.6%	31.9%	50.0%	67.5%	76.9%	86.3%	88.8%
All presentations	9.1%	28.4%	50.0%	79.1%	90.7%	96.3%	98.1%	98.9%

(†) Data points are not shown in graphs for quarters when patient numbers are too small.

(‡) Caution is advised when interpreting abrupt changes over time at the hospital level. For example, performance before and after transition to a new information system is not directly comparable. For more information, see Background Paper: Approaches to reporting time measures of emergency department performance, December 2011.

Fairfield Hospital: Time spent in the ED

Percentage of patients who spent four hours or less in the ED

January to March 2018

All presentations at the emergency department: ¹ 8,784 patients

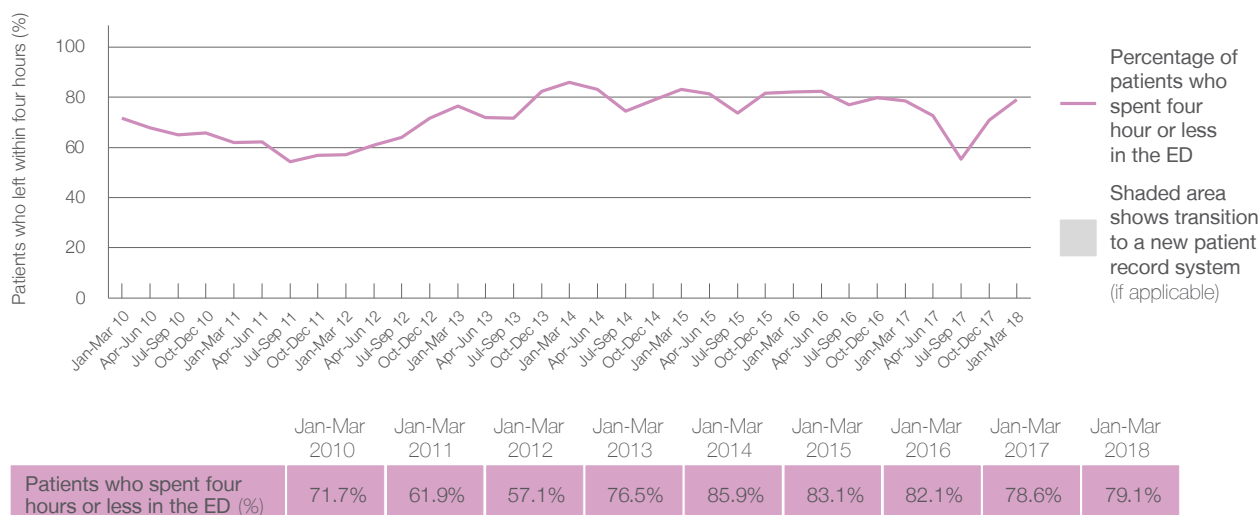
Presentations used to calculate time to leaving the ED: ⁶ 8,784 patients

Percentage of patients who spent four hours or less in the ED



Same period last year	Change since one year ago
8,783	0%
8,783	0%
78.6%	

Percentage of patients who spent four hours or less in the ED, by quarter, January 2010 to March 2018 ^{†‡}



- * Suppressed due to small numbers and to protect privacy. Relevant graphs are also suppressed.
- † Data points are not shown in graphs for quarters when patient numbers were too small.
- ‡ Caution is advised when interpreting abrupt changes over time at the hospital level. For example, performance before and after transition to a new information system is not directly comparable. For more information see *Background Paper: Approaches to reporting time measures of emergency department performance, December 2011*.
1. All emergency and non-emergency presentations at the emergency department (ED).
 2. All presentations that have a triage category and are coded as emergency presentations or unplanned return visits.
 3. Some patients are excluded from ED time measures due to calculation requirements. For details, see the *Technical Supplement: Emergency department measures, January to March 2018*.
 4. The median is the time by which half of patients started treatment. The other half of patients took equal to or longer than this time.
 5. The 90th percentile is the time by which 90% of patients started treatment. The final 10% of patients took equal to or longer than this time.
 6. All presentations that have a departure time.
 7. Transfer of care time refers to the period between arrival of patients at the ED by ambulance and the transfer of responsibility for their care from paramedics to ED staff in an ED treatment zone. For more information see *Spotlight on Measurement: measuring transfer of care from the ambulance to the emergency department*.
 8. The median is the time by which half of patients left the ED. The other half of patients took equal to or longer than this time.
 9. The 90th percentile is the time by which 90% of patients left the ED. The final 10% of patients took equal to or longer than this time.
- Note:** Presentation time is the earlier of times recorded for the start of clerical registration or the triage process. Treatment time is the earliest time recorded when a healthcare professional provides medical care that is relevant to the patient's presenting problems. For patients who were treated and discharged, departure time is the time when treatment was completed. For all other patients, departure time is the time when the patient actually left the ED.
- Note:** All percentages are rounded and therefore percentages may not add to 100%.
- Sources:** ED data from Health Information Exchange, NSW Health (extracted 17 April 2018).
Transfer of care data from Transfer of Care Reporting System (extracted 17 April 2018).