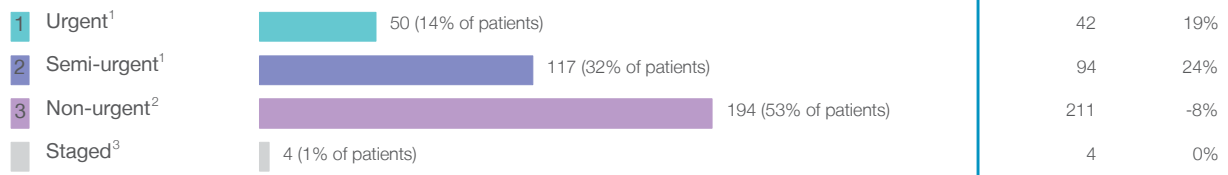


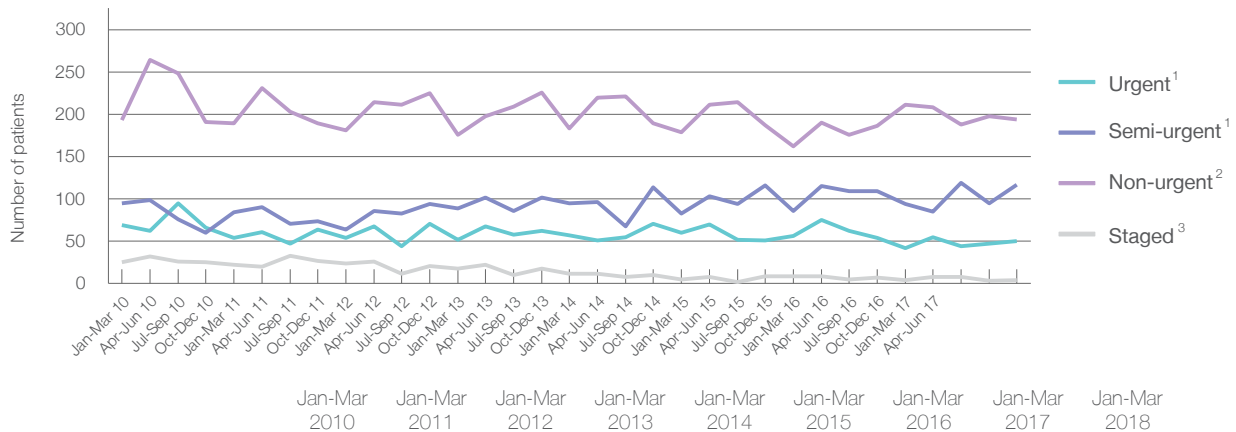
Mona Vale Hospital: Elective surgery performed

January to March 2018

Patients who received elective surgery by urgency category: 365 patients



Patients who received elective surgery by urgency category by quarter, January 2013 to March 2018



All categories	382	349	323	335	347	327	313	351	365
Urgent ¹	69	54	54	52	57	60	56	42	50
Semi-urgent ¹	95	84	64	89	95	83	86	94	117
Non-urgent ²	193	189	181	176	183	179	162	211	194
Staged ³	25	22	24	18	12	5	9	4	4

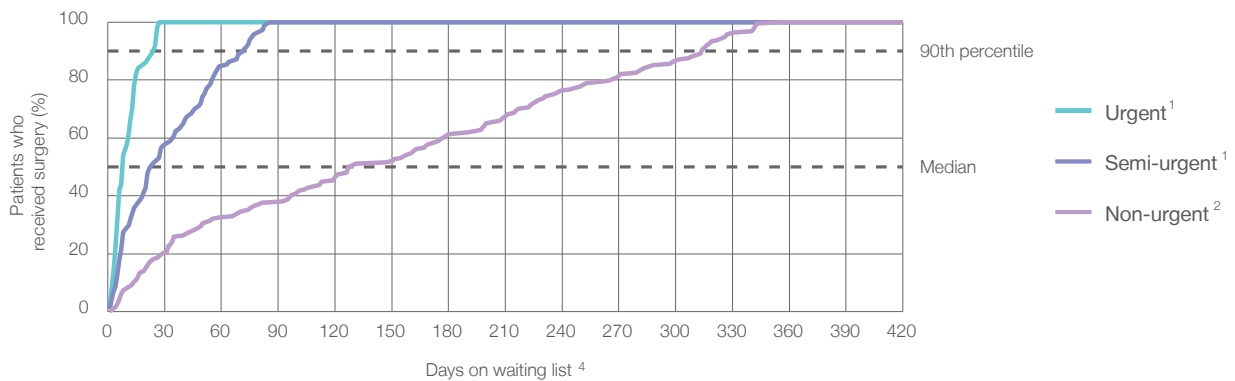
Mona Vale Hospital: Time waited to receive elective surgery

January to March 2018

Percentage of patients who received surgery within the clinically recommended timeframe

			Same period last year	Peer group (this period)
1	Urgent ¹	Recommended: 30 days	100%	99.2%
2	Semi-urgent ¹	Recommended: 90 days	100%	97.5%
3	Non-urgent ²	Recommended: 365 days	100%	97.4%

Percentage of patients who received elective surgery by waiting time (days)



Waiting time (days) for people who received surgery by urgency category

1	Urgent: ¹ 50 patients				
	Median time to receive surgery	<div><div></div>8 days</div>	13	6	13
	90th percentile time to receive surgery	*	27	*	27
2	Semi-urgent: ¹ 117 patients				
	Median time to receive surgery	<div><div></div>23 days</div>	50	23	50
	90th percentile time to receive surgery	<div><div></div>72 days</div>	85	*	84
3	Non-urgent: ² 194 patients				
	Median time to receive surgery	<div><div></div>128 days</div>	274	108	266
	90th percentile time to receive surgery	<div><div></div>314 days</div>	356	314	358

Mona Vale Hospital: Time waited to receive elective surgery

January to March 2018

Median⁵ waiting time (days) for patients who received elective surgery by specialty of surgeon

		Same period last year	Peer group (this period)
Cardiothoracic surgery	n/a (0 patients)	n/a	*
Ear, nose and throat surgery	141 days (76 patients)	108	270
General surgery	46 days (86 patients)	50	58
Gynaecology	10 days (74 patients)	18	51
Medical	n/a (0 patients)	n/a	16
Neurosurgery	n/a (0 patients)	n/a	n/a
Ophthalmology	n/a (0 patients)	n/a	280
Orthopaedic surgery	101 days (108 patients)	132	199
Plastic surgery	n/a (0 patients)	*	76
Urology	26 days (21 patients)	16	42
Vascular surgery	n/a (0 patients)	n/a	23

Median⁵ waiting time (days) for patients who received elective surgery by common procedures⁷

		Same period last year	Peer group (this period)
Abdominal hysterectomy	* (< 5 patients)	*	82
Cataract extraction	n/a (0 patients)	n/a	287
Cholecystectomy	9 days (13 patients)	*	67
Coronary artery bypass graft	n/a (0 patients)	n/a	n/a
Cystoscopy	24 days (13 patients)	13	30
Haemorrhoidectomy	* (< 5 patients)	*	77
Hysteroscopy	18 days (43 patients)	19	41
Inguinal herniorrhaphy	50 days (17 patients)	130	116
Myringoplasty / Tympanoplasty	* (< 5 patients)	n/a	337
Myringotomy	* (< 5 patients)	n/a	86
Other - General	n/a (0 patients)	*	29
Prostatectomy	n/a (0 patients)	n/a	76
Septoplasty	266 days (18 patients)	158	321
Tonsillectomy	216 days (32 patients)	92	297
Total hip replacement	244 days (12 patients)	257	242
Total knee replacement	239 days (13 patients)	*	301
Varicose veins stripping and ligation	n/a (0 patients)	*	99

Mona Vale Hospital: Elective surgery waiting list

January to March 2018

Patients ready for surgery on waiting list at start of quarter: 369 patients

Patients ready for surgery on waiting list at end of quarter: 368 patients

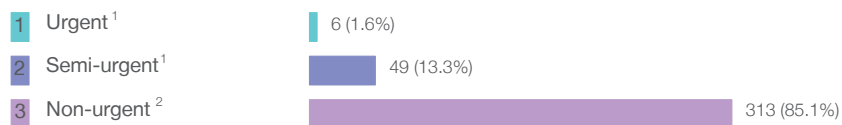
Patients not ready for surgery⁸ on waiting list at end of quarter: 44 patients

Same period last year	Change since one year ago
389	-5%
401	-8%
48	-8%

Mona Vale Hospital: Patients ready for elective surgery

as at 31st March 2018

Patients ready for surgery on waiting list by urgency category: 368 patients



Same period last year	Change since one year ago
< 5	*
36	53%
365	-14%

Mona Vale Hospital: Patients ready for elective surgery

as at 31st March 2018

Patients ready for elective surgery by specialty of surgeon: 368 patients

	As at 31 Mar 2018	Same time last year	Change since one year ago
All specialties	368	401	-8%
Cardiothoracic surgery	0	0	n/a
Ear, nose and throat surgery	97	156	-38%
General surgery	77	60	28%
Gynaecology	22	13	69%
Medical	0	< 5	*
Neurosurgery	0	0	n/a
Ophthalmology	0	0	n/a
Orthopaedic surgery	165	168	-2%
Plastic surgery	0	0	n/a
Urology	7	< 5	*
Vascular surgery	0	0	n/a

Patients ready for elective surgery for common procedures ⁷

	As at 31 Mar 2018	Same time last year	Change since one year ago
Abdominal hysterectomy	< 5	< 5	n/a
Cataract extraction	0	< 5	n/a
Cholecystectomy	12	9	33%
Coronary artery bypass graft	0	< 5	n/a
Cystoscopy	< 5	< 5	*
Haemorrhoidectomy	0	< 5	*
Hysteroscopy	12	< 5	*
Inguinal herniorrhaphy	27	17	59%
Myringoplasty / Tympanoplasty	< 5	< 5	*
Myringotomy	0	< 5	*
Other - General	0	< 5	*
Prostatectomy	0	< 5	n/a
Septoplasty	24	31	-23%
Tonsillectomy	36	63	-43%
Total hip replacement	28	32	-13%
Total knee replacement	46	38	21%
Varicose veins stripping and ligation	< 5	< 5	*

Mona Vale Hospital: Patients ready for elective surgery as at 31st March 2018

Patients ready for elective surgery, on the waiting list for longer than 12 months

As at 31 Mar 2018

Same time last year

All specialties	0	0
-----------------	---	---

- * Suppressed due to small numbers and to protect privacy. Relevant graphs are also suppressed.
- < 5 Less than five patients. For measures by urgency category, counts are included in an adjacent category. Relevant graphs are also suppressed.
1. Excluding staged procedures.
 2. Excluding staged procedures and cystoscopy.
 3. Including non-urgent cystoscopy.
 4. Excludes the total number of days the patient was coded as 'not ready for surgery'.
 5. This is the number of days it took for half of patients who received elective surgery during the period to be admitted and receive their surgery. The other half took equal to or longer than the median to be admitted for surgery.
 6. This is the number of days it took for 90% of patients who received elective surgery during the period to be admitted and receive their surgery. The final 10% of patients took equal to or longer than the 90th percentile.
 7. The procedures included in this list are procedures which are high volume; some may be associated with long waiting periods. For a description of these procedures see *Elective Surgery Glossary of Common Procedures, December 2012*.
 8. Includes staged procedures, non-urgent cystoscopy, and patients currently not available for personal reasons.
- For more information: For details of methods, see the *Technical Supplement: Elective surgery measures, January to March 2018*.
- Note:** All percentages rounded to whole numbers and therefore percentages may not add to 100%.
- Source:** Waiting List Collection On-Line System, NSW Health (extracted 13 April 2018.).