

Casino and District Memorial Hospital: Emergency department (ED) overview

January to March 2016

All attendances:¹ 3,338 patients
Emergency attendances:² 3,177 patients

	Same period last year	Change since one year ago
All attendances	3,371	-1%
Emergency attendances	3,180	0%

Casino and District Memorial Hospital: Time from presentation to treatment³

January to March 2016

Triage 2 Emergency (e.g. chest pain, severe burns): 193 patients

Median time to start treatment⁴ 9 minutes
95th percentile time to start treatment⁵ 49 minutes

Triage 3 Urgent (e.g. moderate blood loss, dehydration): 908 patients

Median time to start treatment⁴ 21 minutes
95th percentile time to start treatment⁵ 103 minutes

Triage 4 Semi-urgent (e.g. sprained ankle, earache): 1,703 patients

Median time to start treatment⁴ 34 minutes
95th percentile time to start treatment⁵ 153 minutes

Triage 5 Non-urgent (e.g. small cuts or abrasions): 368 patients

Median time to start treatment⁴ 28 minutes
95th percentile time to start treatment⁵ 165 minutes

	Same period last year	NSW (this period)
All attendances	202	
Emergency attendances	8 minutes	8 minutes
Urgent attendances	35 minutes	35 minutes
Semi-urgent attendances	776	
Non-urgent attendances	22 minutes	20 minutes
Emergency attendances	89 minutes	99 minutes
Semi-urgent attendances	1,680	
Non-urgent attendances	39 minutes	26 minutes
Emergency attendances	157 minutes	137 minutes
All attendances	517	
Non-urgent attendances	31 minutes	23 minutes
Emergency attendances	158 minutes	135 minutes

Casino and District Memorial Hospital: Time from presentation until leaving the ED

January to March 2016

Attendances used to calculate time to leaving the ED:⁶ 3,336 patients

Percentage of patients who left the ED within four hours 91%

	Same period last year	Change since one year ago
Attendances used to calculate time to leaving the ED	3,370	-1%
Percentage of patients who left the ED within four hours	92%	

* Suppressed due to small number of patients and to protect privacy. Relevant graphs are also suppressed.

- All emergency and non-emergency attendances at the emergency department (ED).
- All attendances that have a triage category and are coded as emergency presentations or unplanned return visits.
- Some patients are excluded from ED time measures due to calculation requirements. For details, see the *Technical Supplement: Emergency department measures, January to March 2016*.
- The median is the time by which half of patients started treatment. The other half of patients took equal to or longer than this time.
- The 95th percentile is the time by which 95% of patients started treatment. The final 5% of patients took equal to or longer than this time.
- All attendances that have a departure time.

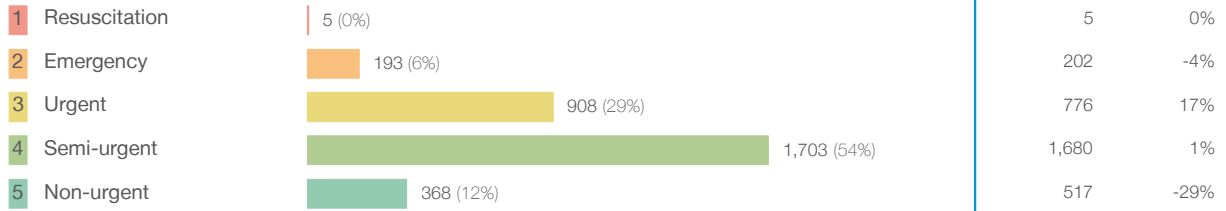
Note: Presentation time is the earlier time recorded for clerical registration or the triage process. Treatment time is the earliest time recorded when a healthcare professional provides medical care relevant to the patient's presenting problems.

Source: Health Information Exchange, NSW Health (extracted 22 April 2016).

Casino and District Memorial Hospital: Patients attending the emergency department January to March 2016

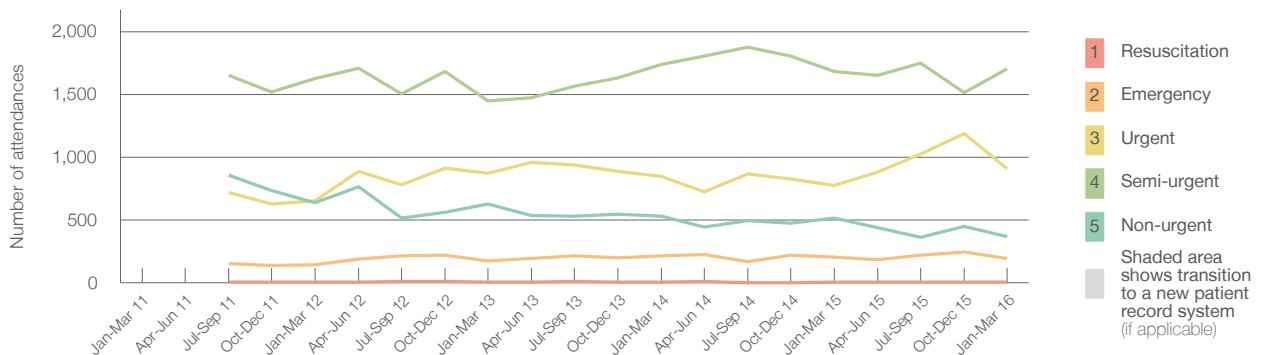
All attendances:¹ 3,338 patients

Emergency attendances² by triage category: 3,177 patients



Same period last year	Change since one year ago
3,371	-1%
3,180	0%
5	0%
202	-4%
776	17%
1,680	1%
517	-29%

Emergency attendances² by quarter, January 2011 to March 2016^{‡ §}



	Jan-Mar 2011	Jan-Mar 2012	Jan-Mar 2013	Jan-Mar 2014	Jan-Mar 2015	Jan-Mar 2016
Resuscitation	< 5	6	6	5	5	
Emergency	145	175	215	202	193	
Urgent	651	871	844	776	908	
Semi-urgent	1,626	1,448	1,741	1,680	1,703	
Non-urgent	637	627	528	517	368	
All emergency attendances	3,059	3,127	3,334	3,180	3,177	

Casino and District Memorial Hospital: Patients arriving by ambulance January to March 2016

Arrivals used to calculate transfer of care time:⁷ 245 patients

ED Transfer of care time[§]



Same period last year	Change since one year ago
283	
20 minutes	-3 minutes
58 minutes	16 minutes

- (†) Data points are not shown in graphs for quarters when patient numbers are too small.
- (‡) Caution is advised when interpreting abrupt changes over time at the hospital level. For example, performance before and after transition to a new information system is not directly comparable. For more information, see Background Paper: Approaches to reporting time measures of emergency department performance, December 2011.
- (§) Quarterly information for this hospital is shown where data are available from the Health Information Exchange, NSW Health. For more information, see Background Paper: Approaches to reporting time measures of emergency department performance, December 2011.
- (§) For some smaller NSW hospitals, transfer of care times reported in Hospital Quarterly are being assessed for data quality and results should be interpreted with caution.

Casino and District Memorial Hospital: Time from presentation to treatment, triage 2 January to March 2016

Triage 2 Emergency (e.g. chest pain, severe burns)

Number of triage 2 patients: 193

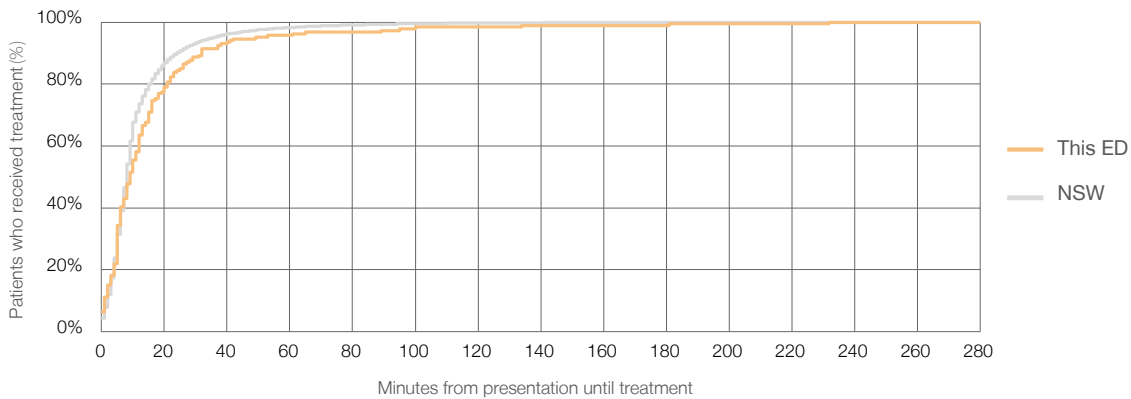
Number of triage 2 patients used to calculate waiting time:³ 186

Median time to start treatment⁴ 9 minutes

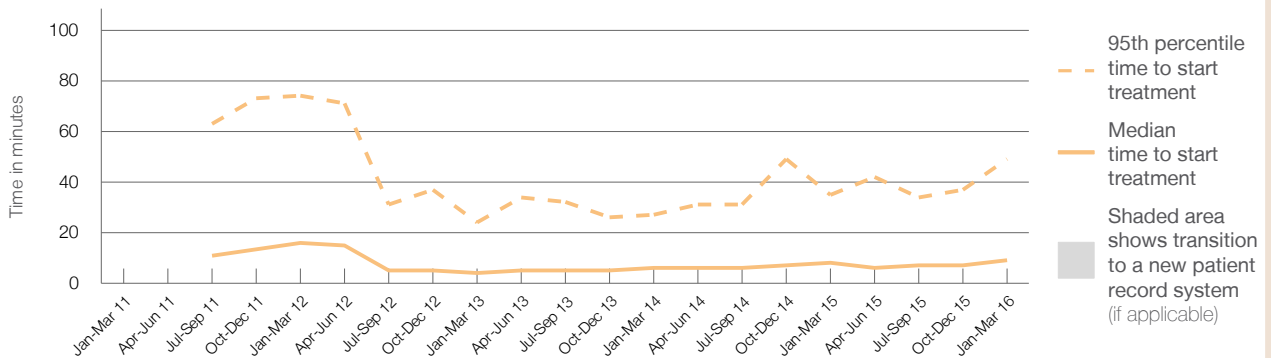
95th percentile time to start treatment⁵ 49 minutes

Same period last year	NSW (this period)
202	199
8 minutes	8 minutes
35 minutes	35 minutes

Percentage of triage 2 patients who received treatment by time, January to March 2016



Time from presentation until treatment (minutes) for triage 2 patients, January 2011 to March 2016^{†‡§}



	Jan-Mar 2011	Jan-Mar 2012	Jan-Mar 2013	Jan-Mar 2014	Jan-Mar 2015	Jan-Mar 2016
Median time to start treatment ⁴ (minutes)		16	4	6	8	9
95th percentile time to start treatment ⁵ (minutes)		74	24	27	35	49

(†) Data points are not shown in graphs for quarters when patient numbers are too small.

(‡) Caution is advised when interpreting abrupt changes over time at the hospital level. For example, performance before and after transition to a new information system is not directly comparable. For more information, see Background Paper: Approaches to reporting time measures of emergency department performance, December 2011.

(§) Quarterly information for this hospital is shown where data are available from the Health Information Exchange, NSW Health. For more information, see Background Paper: Approaches to reporting time measures of emergency department performance, December 2011.

Casino and District Memorial Hospital: Time from presentation to treatment, triage 3 January to March 2016

Triage 3 Urgent (e.g. moderate blood loss, dehydration)

Number of triage 3 patients: 908

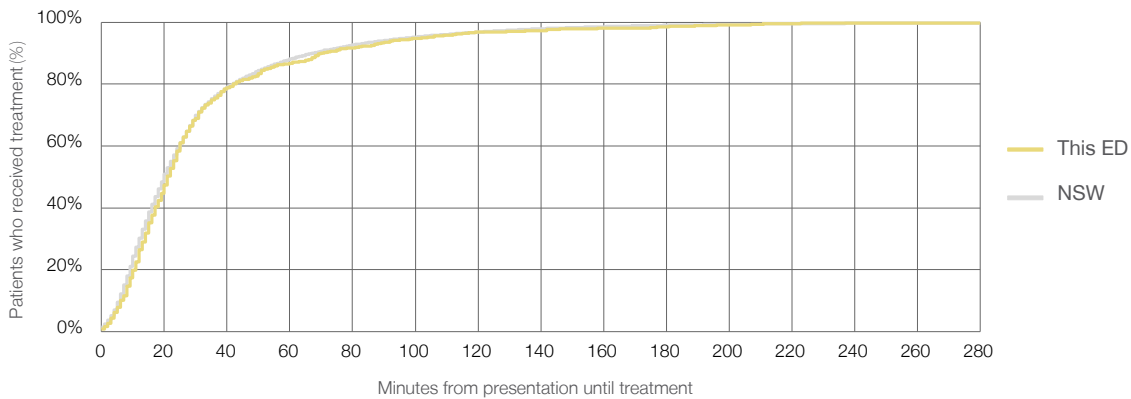
Number of triage 3 patients used to calculate waiting time:³ 861

Median time to start treatment⁴ 21 minutes

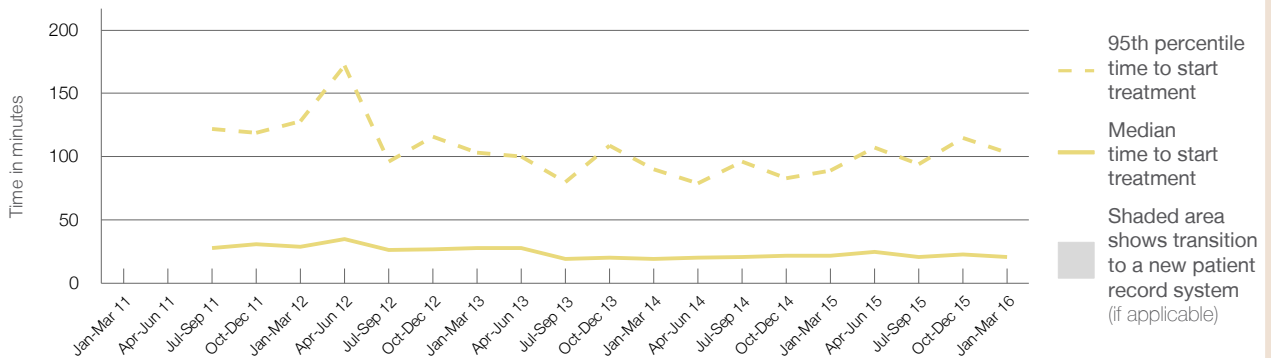
95th percentile time to start treatment⁵ 103 minutes

Same period last year	NSW (this period)
776	744
22 minutes	20 minutes
89 minutes	99 minutes

Percentage of triage 3 patients who received treatment by time, January to March 2016



Time from presentation until treatment (minutes) for triage 3 patients, January 2011 to March 2016^{†‡§}



	Jan-Mar 2011	Jan-Mar 2012	Jan-Mar 2013	Jan-Mar 2014	Jan-Mar 2015	Jan-Mar 2016
Median time to start treatment ⁴ (minutes)		29	28	19	22	21
95th percentile time to start treatment ⁵ (minutes)		128	103	90	89	103

(†) Data points are not shown in graphs for quarters when patient numbers are too small.

(‡) Caution is advised when interpreting abrupt changes over time at the hospital level. For example, performance before and after transition to a new information system is not directly comparable. For more information, see Background Paper: Approaches to reporting time measures of emergency department performance, December 2011.

(§) Quarterly information for this hospital is shown where data are available from the Health Information Exchange, NSW Health. For more information, see Background Paper: Approaches to reporting time measures of emergency department performance, December 2011.

Casino and District Memorial Hospital: Time from presentation to treatment, triage 4 January to March 2016

Triage 4 Semi-urgent (e.g. sprained ankle, earache)

Number of triage 4 patients: 1,703

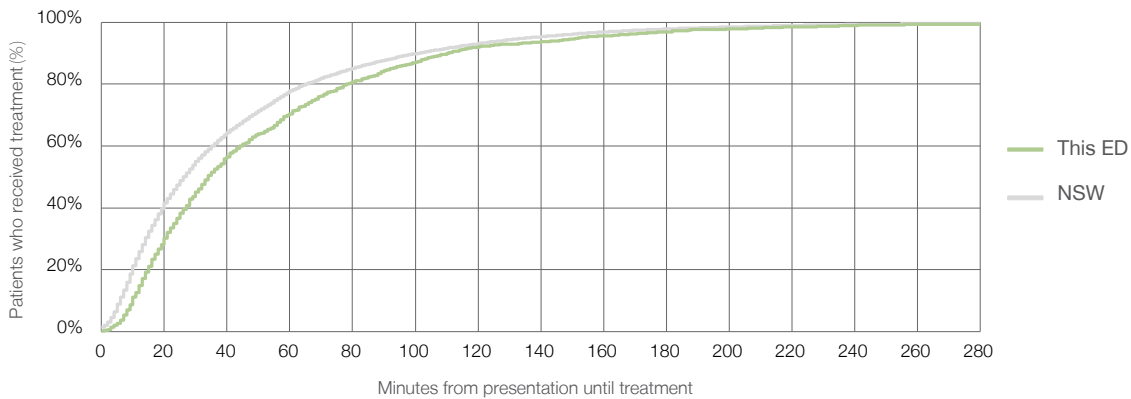
Number of triage 4 patients used to calculate waiting time:³ 1,568

Median time to start treatment⁴ 34 minutes

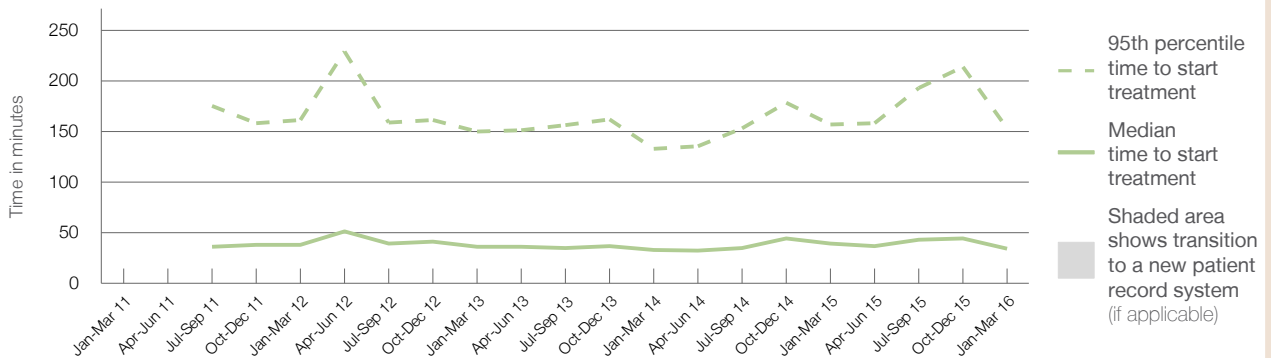
95th percentile time to start treatment⁵ 153 minutes

	Same period last year	NSW (this period)
Number of triage 4 patients	1,680	1,550
Median time to start treatment ⁴	39 minutes	26 minutes
95th percentile time to start treatment ⁵	157 minutes	137 minutes

Percentage of triage 4 patients who received treatment by time, January to March 2016



Time from presentation until treatment (minutes) for triage 4 patients, January 2011 to March 2016^{†‡§}



	Jan-Mar 2011	Jan-Mar 2012	Jan-Mar 2013	Jan-Mar 2014	Jan-Mar 2015	Jan-Mar 2016
Median time to start treatment ⁴ (minutes)		38	36	33	39	34
95th percentile time to start treatment ⁵ (minutes)		161	150	133	157	153

(†) Data points are not shown in graphs for quarters when patient numbers are too small.

(‡) Caution is advised when interpreting abrupt changes over time at the hospital level. For example, performance before and after transition to a new information system is not directly comparable. For more information, see Background Paper: Approaches to reporting time measures of emergency department performance, December 2011.

(§) Quarterly information for this hospital is shown where data are available from the Health Information Exchange, NSW Health. For more information, see Background Paper: Approaches to reporting time measures of emergency department performance, December 2011.

Casino and District Memorial Hospital: Time from presentation to treatment, triage 5 January to March 2016

Triage 5 Non-urgent (e.g. small cuts or abrasions)

Number of triage 5 patients: 368

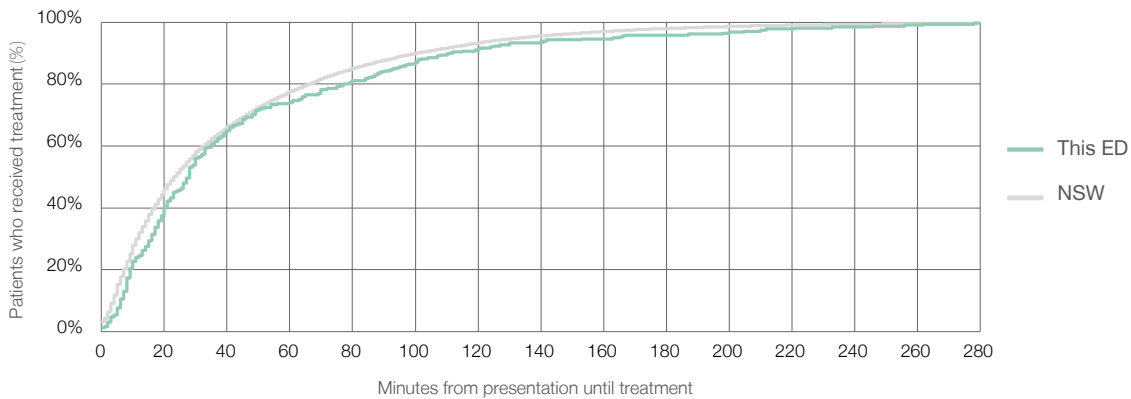
Number of triage 5 patients used to calculate waiting time:³ 312

Median time to start treatment⁴ 28 minutes

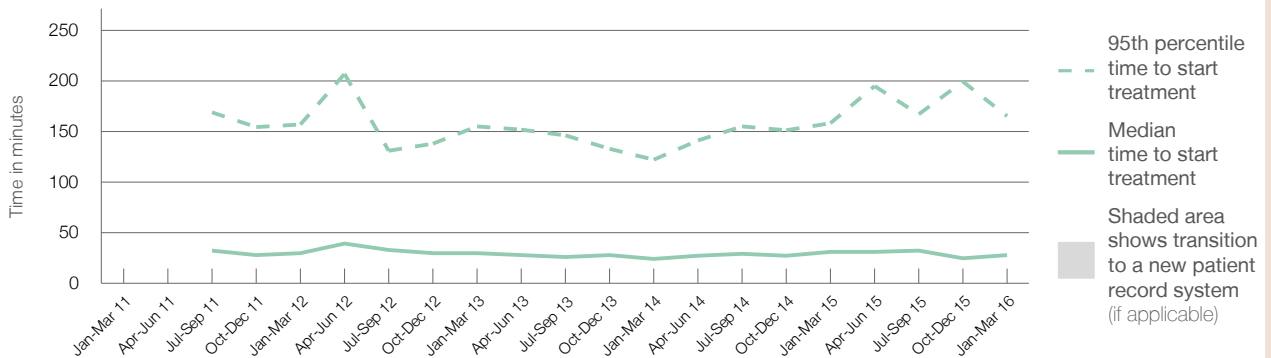
95th percentile time to start treatment⁵ 165 minutes

Same period last year	NSW (this period)
517	
463	
31 minutes	23 minutes
158 minutes	135 minutes

Percentage of triage 5 patients who received treatment by time, January to March 2016



Time from presentation until treatment (minutes) for triage 5 patients, January 2011 to March 2016^{†§}



	Jan-Mar 2011	Jan-Mar 2012	Jan-Mar 2013	Jan-Mar 2014	Jan-Mar 2015	Jan-Mar 2016
Median time to start treatment ⁴ (minutes)		30	30	24	31	28
95th percentile time to start treatment ⁵ (minutes)		157	155	122	158	165

(†) Data points are not shown in graphs for quarters when patient numbers are too small.

(‡) Caution is advised when interpreting abrupt changes over time at the hospital level. For example, performance before and after transition to a new information system is not directly comparable. For more information, see Background Paper: Approaches to reporting time measures of emergency department performance, December 2011.

(§) Quarterly information for this hospital is shown where data are available from the Health Information Exchange, NSW Health. For more information, see Background Paper: Approaches to reporting time measures of emergency department performance, December 2011.

Casino and District Memorial Hospital: Time from presentation until leaving the ED

January to March 2016

All attendances:¹ 3,338 patients

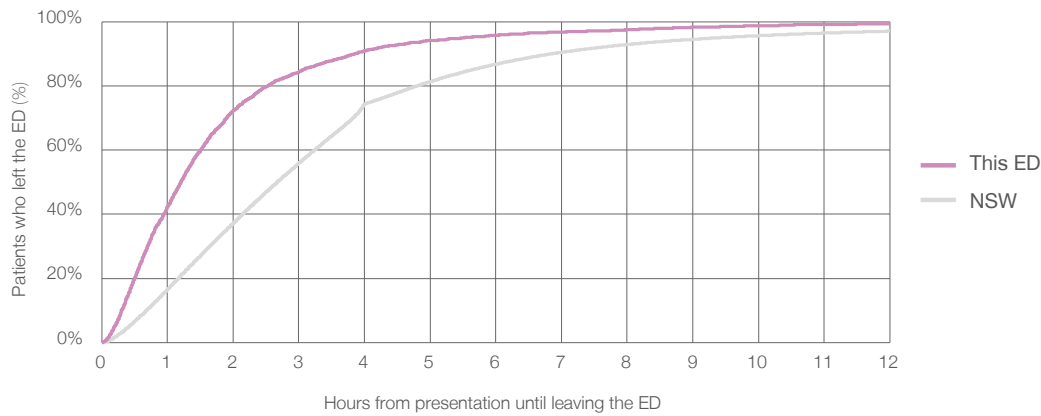
Attendances used to calculate time to leaving the ED:⁶ 3,336 patients

Median time to leaving the ED⁸ 1 hours and 12 minutes

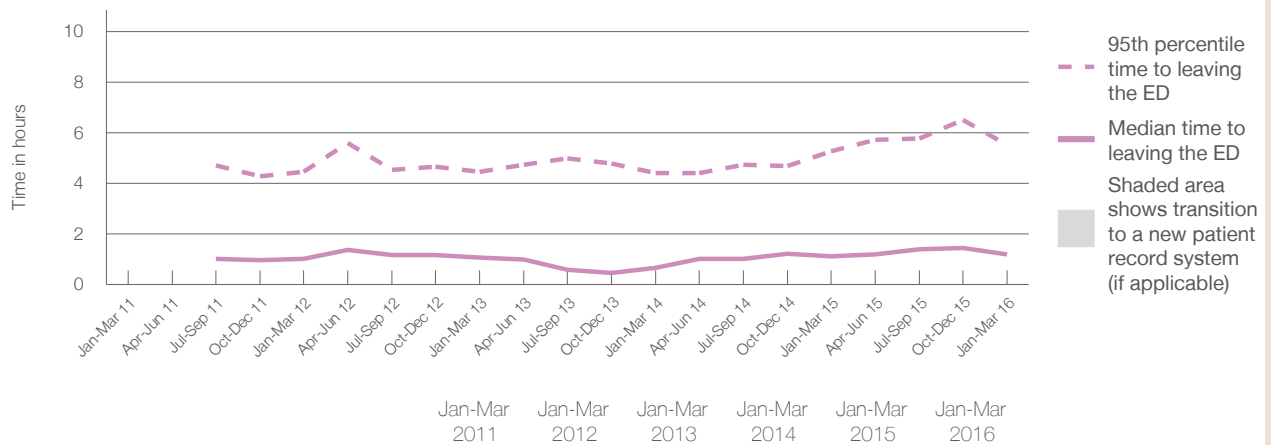
95th percentile time to leaving the ED⁹ 5 hours and 32 minutes

Same period last year	NSW (this period)
3,371	
3,370	
1 hours and 8 minutes	2 hours and 40 minutes
5 hours and 16 minutes	9 hours and 25 minutes

Percentage of patients who left the ED by time, January to March 2016



Time from presentation until leaving the ED, by quarter, January 2011 to March 2016^{†‡§}



Median time to leaving the ED ⁸ (hours, minutes)		1h 2m	1h 5m	0h 40m	1h 8m	1h 12m
95th percentile time to leaving the ED ⁹ (hours, minutes)		4h 28m	4h 28m	4h 25m	5h 16m	5h 32m

(†) Data points are not shown in graphs for quarters when patient numbers are too small.

(‡) Caution is advised when interpreting abrupt changes over time at the hospital level. For example, performance before and after transition to a new information system is not directly comparable. For more information, see Background Paper: Approaches to reporting time measures of emergency department performance, December 2011.

(§) Quarterly information for this hospital is shown where data are available from the Health Information Exchange, NSW Health. For more information, see Background Paper: Approaches to reporting time measures of emergency department performance, December 2011.

Casino and District Memorial Hospital: Time from presentation until leaving the ED

By mode of separation

January to March 2016

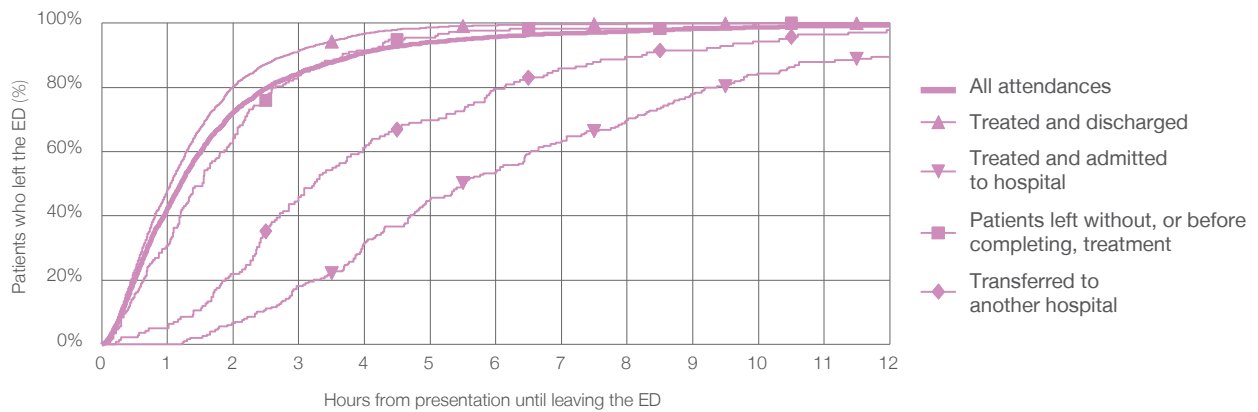
All attendances:¹ 3,338 patients

Attendances used to calculate time to leaving the ED:⁶ 3,336 patients

Treated and discharged	2,783 (83%)
Treated and admitted to hospital	199 (6%)
Patient left without, or before completing, treatment	179 (5%)
Transferred to another hospital	142 (4%)
Other	35 (1%)

Same period last year	Change since one year ago
3,370	-1%
2,698	3%
298	-33%
186	-4%
161	-12%
28	25%

Percentage of patients who left the ED by time and mode of separation, January to March 2016^{††§}



1 hour 2 hours 3 hours 4 hours 6 hours 8 hours 10 hours 12 hours

	1 hour	2 hours	3 hours	4 hours	6 hours	8 hours	10 hours	12 hours
Treated and discharged	48%	80%	91%	97%	99%	100%	100%	100%
Treated and admitted to hospital	0%	7%	18%	32%	54%	70%	84%	89%
Patient left without, or before completing, treatment	31%	64%	84%	92%	98%	98%	100%	100%
Transferred to another hospital	5%	22%	46%	61%	80%	89%	94%	98%
All attendances	42%	72%	84%	91%	96%	98%	99%	99%

(†) Data points are not shown in graphs for quarters when patient numbers are too small.

(††) Caution is advised when interpreting abrupt changes over time at the hospital level. For example, performance before and after transition to a new information system is not directly comparable. For more information, see Background Paper: Approaches to reporting time measures of emergency department performance, December 2011.

(§) Quarterly information for this hospital is shown where data are available from the Health Information Exchange, NSW Health. For more information, see Background Paper: Approaches to reporting time measures of emergency department performance, December 2011.

Casino and District Memorial Hospital: Time from presentation until leaving the ED Percentage of patients who left the ED within four hours of presentation January to March 2016

All attendances: ¹ 3,338 patients

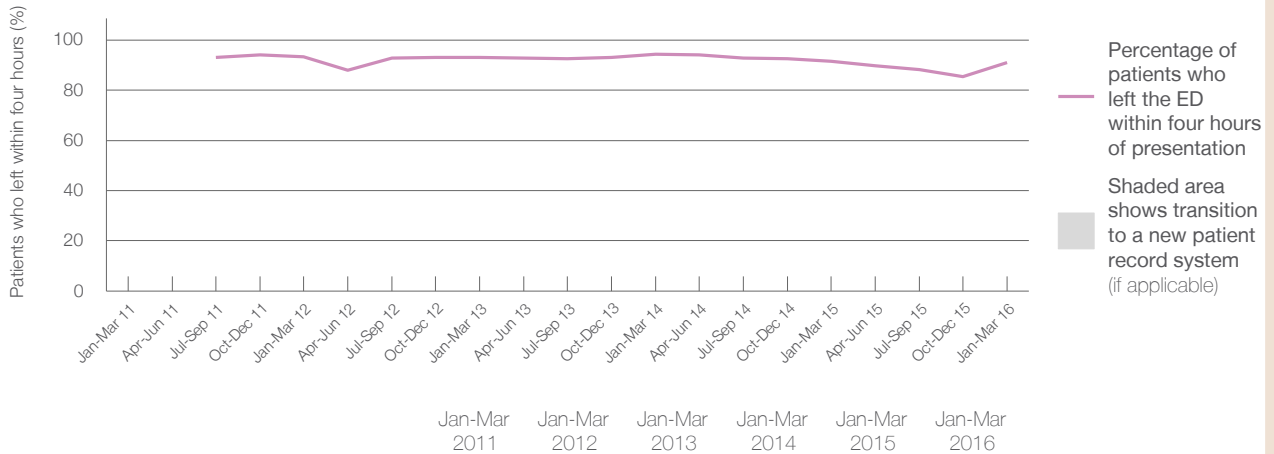
Attendances used to calculate time to leaving the ED: ⁶ 3,336 patients

Percentage of patients who left the ED within four hours



	Same period last year	Change since one year ago
All attendances	3,371	-1%
Attendances used to calculate time to leaving the ED	3,370	-1%
Percentage of patients who left the ED within four hours	92%	

Percentage of patients who left the ED within four hours of presentation, by quarter, January 2011 to March 2016 ^{†‡§}



Patients who left within four hours (%)	Jan-Mar 2011	Jan-Mar 2012	Jan-Mar 2013	Jan-Mar 2014	Jan-Mar 2015	Jan-Mar 2016
	93%	93%	93%	94%	92%	91%

* Suppressed due to small numbers and to protect privacy. Relevant graphs are also suppressed.

† Data points are not shown in graphs for quarters when patient numbers were too small.

‡ Caution is advised when interpreting abrupt changes over time at the hospital level. For example, performance before and after transition to a new information system is not directly comparable. For more information see *Background Paper: Approaches to reporting time measures of emergency department performance, December 2011*.

§ Quarterly information for this hospital is shown where data are available from the Health Information Exchange, NSW Health. For more information, see *Background Paper: Approaches to reporting time measures of emergency department performance, December 2011*.

- All emergency and non-emergency attendances at the emergency department (ED).
- All attendances that have a triage category and are coded as emergency presentations or unplanned return visits.
- Some patients are excluded from ED time measures due to calculation requirements. For details, see the *Technical Supplement: Emergency department measures, January to March 2016*.
- The median is the time by which half of patients started treatment. The other half of patients took equal to or longer than this time.
- The 95th percentile is the time by which 95% of patients started treatment. The final 5% of patients took equal to or longer than this time.
- All attendances that have a departure time.
- Transfer of care time refers to the period between arrival of patients at the ED by ambulance and the transfer of responsibility for their care from paramedics to ED staff in an ED treatment zone. For more information see *Spotlight on Measurement: measuring transfer of care from the ambulance to the emergency department*.
- The median is the time by which half of patients left the ED. The other half of patients took equal to or longer than this time.
- The 95th percentile is the time by which 95% of patients left the ED. The final 5% of patients took equal to or longer than this time.

Note: Presentation time is the earlier of times recorded for the start of clerical registration or the triage process. Treatment time is the earliest time recorded when a healthcare professional provides medical care that is relevant to the patient's presenting problems. For patients who were treated and discharged, departure time is the time when treatment was completed. For all other patients, departure time is the time when the patient actually left the ED.

Note: All percentages rounded to whole numbers and therefore percentages may not add to 100%.

Sources: ED data from Health Information Exchange, NSW Health (extracted 22 April 2016).
Transfer of care data from Transfer of Care Reporting System (extracted 22 April 2016).