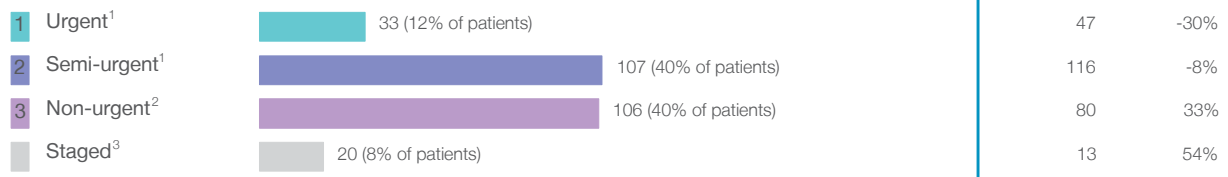


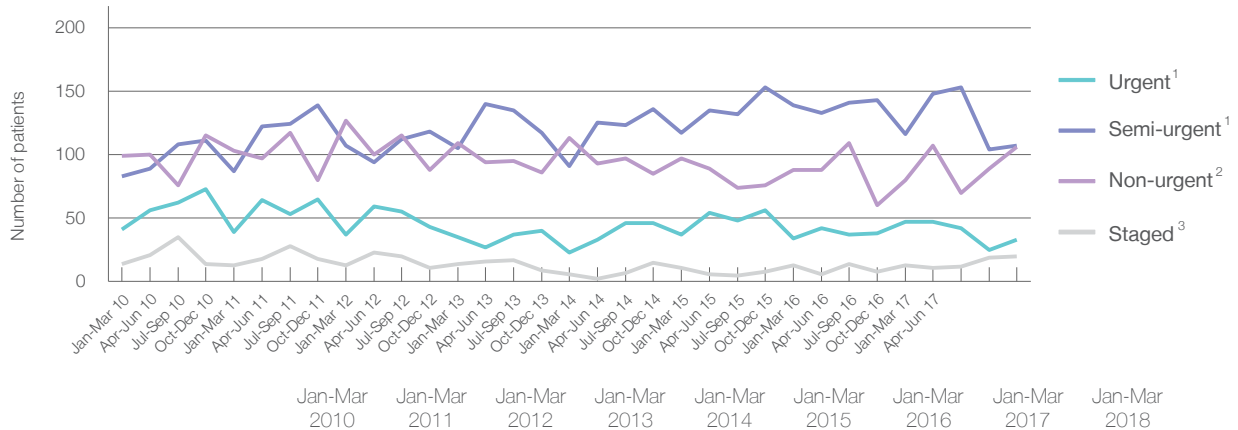
Broken Hill Health Service: Elective surgery performed

January to March 2018

Patients who received elective surgery by urgency category: 266 patients



Patients who received elective surgery by urgency category by quarter, January 2013 to March 2018



	Jan-Mar 2010	Jan-Mar 2011	Jan-Mar 2012	Jan-Mar 2013	Jan-Mar 2014	Jan-Mar 2015	Jan-Mar 2016	Jan-Mar 2017	Jan-Mar 2018
All categories	237	242	284	263	233	262	274	256	266
Urgent ¹	41	39	37	35	23	37	34	47	33
Semi-urgent ¹	83	87	107	105	91	117	139	116	107
Non-urgent ²	99	103	127	109	113	97	88	80	106
Staged ³	14	13	13	14	6	11	13	13	20

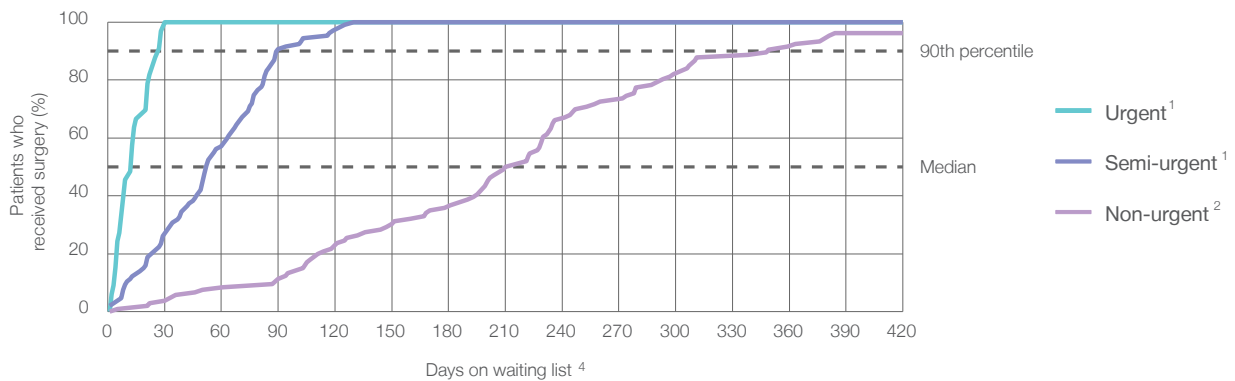
Broken Hill Health Service: Time waited to receive elective surgery

January to March 2018

Percentage of patients who received surgery within the clinically recommended timeframe

		Same period last year	Peer group (this period)
1 Urgent ¹	Recommended: 30 days 100%	100%	100%
2 Semi-urgent ¹	Recommended: 90 days 90.7%	94.0%	98.1%
3 Non-urgent ²	Recommended: 365 days 92.5%	97.5%	97.4%

Percentage of patients who received elective surgery by waiting time (days)



Waiting time (days) for people who received surgery by urgency category

		Peer group (this period)	This hospital (same period last year)	Peer group (same period last year)
1 Urgent: ¹ 33 patients				
Median time to receive surgery	13 days	13	13	13
90th percentile time to receive surgery	*	27	*	26
2 Semi-urgent: ¹ 107 patients				
Median time to receive surgery	52 days	52	54	50
90th percentile time to receive surgery	90 days	84	82	83
3 Non-urgent: ² 106 patients				
Median time to receive surgery	216 days	247	257	254
90th percentile time to receive surgery	349 days	352	*	351

Broken Hill Health Service: Time waited to receive elective surgery

January to March 2018

Median⁵ waiting time (days) for patients who received elective surgery by specialty of surgeon

		Same period last year	Peer group (this period)
Cardiothoracic surgery	n/a (0 patients)	n/a	n/a
Ear, nose and throat surgery	247 days (25 patients)	*	101
General surgery	67 days (48 patients)	30	50
Gynaecology	8 days (16 patients)	8	52
Medical	n/a (0 patients)	n/a	11
Neurosurgery	n/a (0 patients)	n/a	n/a
Ophthalmology	200 days (58 patients)	250	279
Orthopaedic surgery	149 days (34 patients)	102	179
Plastic surgery	45 days (39 patients)	55	57
Urology	62 days (46 patients)	33	39
Vascular surgery	n/a (0 patients)	*	85

Median⁵ waiting time (days) for patients who received elective surgery by common procedures⁷

		Same period last year	Peer group (this period)
Abdominal hysterectomy	n/a (0 patients)	n/a	87
Cataract extraction	209 days (47 patients)	263	281
Cholecystectomy	* (5 patients)	*	52
Coronary artery bypass graft	n/a (0 patients)	n/a	n/a
Cystoscopy	53 days (18 patients)	18	32
Haemorrhoidectomy	* (5 patients)	*	77
Hysteroscopy	* (8 patients)	*	43
Inguinal herniorrhaphy	77 days (10 patients)	*	82
Myringoplasty / Tympanoplasty	n/a (0 patients)	*	*
Myringotomy	n/a (0 patients)	n/a	*
Other - General	* (< 5 patients)	*	33
Prostatectomy	* (7 patients)	*	84
Septoplasty	* (< 5 patients)	*	251
Tonsillectomy	* (8 patients)	*	119
Total hip replacement	* (< 5 patients)	*	259
Total knee replacement	* (< 5 patients)	131	294
Varicose veins stripping and ligation	n/a (0 patients)	*	104

Broken Hill Health Service: Elective surgery waiting list

January to March 2018

Patients ready for surgery on waiting list at start of quarter: 380 patients

Patients ready for surgery on waiting list at end of quarter: 354 patients

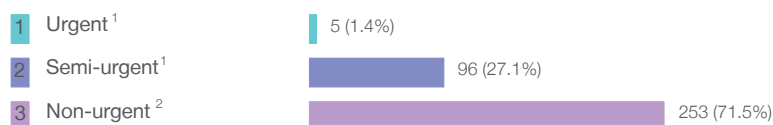
Patients not ready for surgery⁸ on waiting list at end of quarter: 140 patients

Same period last year	Change since one year ago
363	5%
382	-7%
79	77%

Broken Hill Health Service: Patients ready for elective surgery

as at 31st March 2018

Patients ready for surgery on waiting list by urgency category: 354 patients



Same period last year	Change since one year ago
10	-50%
93	3%
279	-9%

Broken Hill Health Service: Patients ready for elective surgery as at 31st March 2018

Patients ready for elective surgery by specialty of surgeon: 354 patients

	As at 31 Mar 2018	Same time last year	Change since one year ago
All specialties	354	382	-7%
Cardiothoracic surgery	0	0	n/a
Ear, nose and throat surgery	57	54	6%
General surgery	61	14	336%
Gynaecology	< 5	8	*
Medical	0	0	n/a
Neurosurgery	0	0	n/a
Ophthalmology	123	132	-7%
Orthopaedic surgery	59	113	-48%
Plastic surgery	24	37	-35%
Urology	28	18	56%
Vascular surgery	< 5	6	*

Patients ready for elective surgery for common procedures ⁷

	As at 31 Mar 2018	Same time last year	Change since one year ago
Abdominal hysterectomy	0	< 5	n/a
Cataract extraction	104	113	-8%
Cholecystectomy	9	< 5	n/a
Coronary artery bypass graft	0	< 5	n/a
Cystoscopy	10	8	25%
Haemorrhoidectomy	< 5	< 5	*
Hysteroscopy	0	< 5	*
Inguinal herniorrhaphy	11	6	83%
Myringoplasty / Tympanoplasty	< 5	< 5	*
Myringotomy	0	< 5	n/a
Other - General	< 5	< 5	*
Prostatectomy	6	< 5	*
Septoplasty	15	15	0%
Tonsillectomy	23	17	35%
Total hip replacement	14	15	-7%
Total knee replacement	27	46	-41%
Varicose veins stripping and ligation	< 5	5	*

Broken Hill Health Service: Patients ready for elective surgery as at 31st March 2018

Patients ready for elective surgery, on the waiting list for longer than 12 months

As at 31 Mar 2018

Same time last year

All specialties

< 5

< 5

* Suppressed due to small numbers and to protect privacy. Relevant graphs are also suppressed.

< 5 Less than five patients. For measures by urgency category, counts are included in an adjacent category. Relevant graphs are also suppressed.

1. Excluding staged procedures.
2. Excluding staged procedures and cystoscopy.
3. Including non-urgent cystoscopy.
4. Excludes the total number of days the patient was coded as 'not ready for surgery'.
5. This is the number of days it took for half of patients who received elective surgery during the period to be admitted and receive their surgery. The other half took equal to or longer than the median to be admitted for surgery.
6. This is the number of days it took for 90% of patients who received elective surgery during the period to be admitted and receive their surgery. The final 10% of patients took equal to or longer than the 90th percentile.
7. The procedures included in this list are procedures which are high volume; some may be associated with long waiting periods. For a description of these procedures see *Elective Surgery Glossary of Common Procedures, December 2012*.
8. Includes staged procedures, non-urgent cystoscopy, and patients currently not available for personal reasons.

For more information: For details of methods, see the *Technical Supplement: Elective surgery measures, January to March 2018*.

Note: All percentages rounded to whole numbers and therefore percentages may not add to 100%.

Source: Waiting List Collection On-Line System, NSW Health (extracted 13 April 2018.).