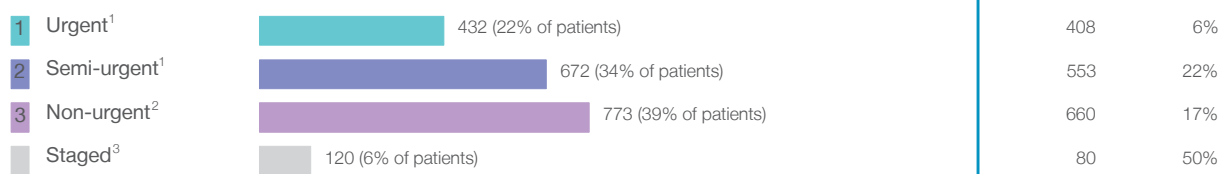


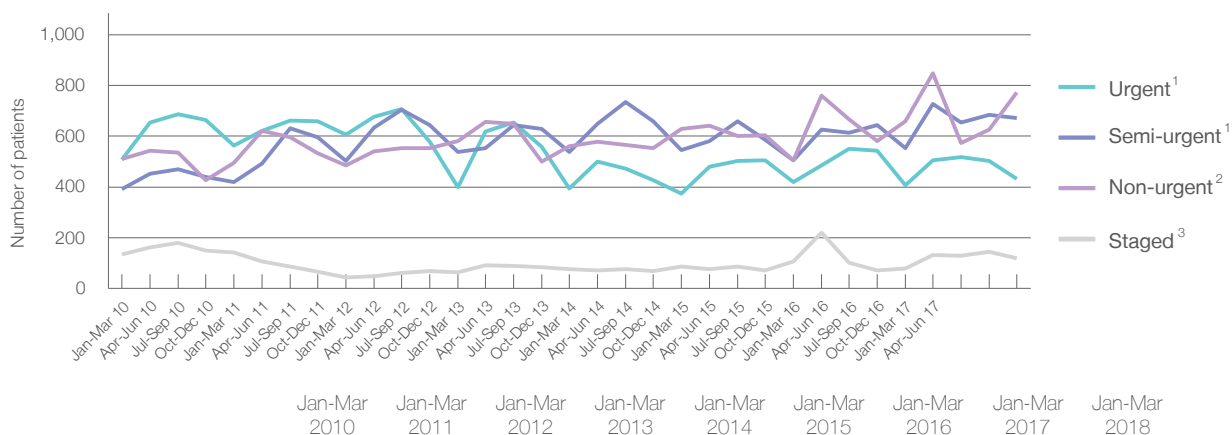
Liverpool Hospital: Elective surgery performed

January to March 2018

Patients who received elective surgery by urgency category: 1,997 patients



Patients who received elective surgery by urgency category by quarter, January 2013 to March 2018



All categories	1,545	1,623	1,636	1,580	1,570	1,633	1,537	1,701	1,997
Urgent ¹	509	564	606	400	395	373	420	408	432
Semi-urgent ¹	391	420	503	537	538	546	504	553	672
Non-urgent ²	510	496	484	580	560	628	505	660	773
Staged ³	135	143	43	63	77	86	108	80	120

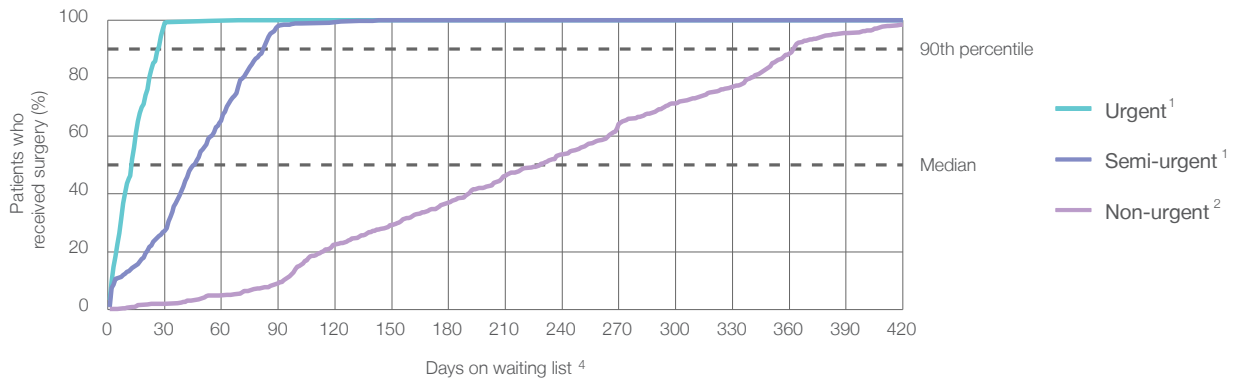
Liverpool Hospital: Time waited to receive elective surgery

January to March 2018

Percentage of patients who received surgery within the clinically recommended timeframe

			Same period last year	Peer group (this period)
1 Urgent ¹	Recommended: 30 days	99.1%	100%	99.7%
2 Semi-urgent ¹	Recommended: 90 days	98.1%	98.9%	93.1%
3 Non-urgent ²	Recommended: 365 days	92.2%	98.8%	91.4%

Percentage of patients who received elective surgery by waiting time (days)



Waiting time (days) for people who received surgery by urgency category

		Peer group (this period)	This hospital (same period last year)	Peer group (same period last year)
1 Urgent: ¹ 432 patients				
Median time to receive surgery	13 days	9	14	8
90th percentile time to receive surgery	27 days	25	27	25
2 Semi-urgent: ¹ 672 patients				
Median time to receive surgery	46 days	45	42	42
90th percentile time to receive surgery	83 days	87	80	85
3 Non-urgent: ² 773 patients				
Median time to receive surgery	229 days	190	180	177
90th percentile time to receive surgery	362 days	363	350	358

Liverpool Hospital: Time waited to receive elective surgery

January to March 2018

Median⁵ waiting time (days) for patients who received elective surgery by specialty of surgeon

		Same period last year	Peer group (this period)
Cardiothoracic surgery	43 days (76 patients)	35	23
Ear, nose and throat surgery	309 days (192 patients)	216	191
General surgery	59 days (508 patients)	57	31
Gynaecology	41 days (302 patients)	39	32
Medical	n/a (0 patients)	*	14
Neurosurgery	83 days (110 patients)	92	63
Ophthalmology	229 days (191 patients)	190	152
Orthopaedic surgery	16 days (56 patients)	11	83
Plastic surgery	34 days (103 patients)	20	23
Urology	40 days (289 patients)	51	39
Vascular surgery	45 days (170 patients)	28	22

Median⁵ waiting time (days) for patients who received elective surgery by common procedures⁷

		Same period last year	Peer group (this period)
Abdominal hysterectomy	29 days (58 patients)	36	35
Cataract extraction	233 days (153 patients)	190	180
Cholecystectomy	99 days (63 patients)	58	59
Coronary artery bypass graft	88 days (32 patients)	71	42
Cystoscopy	27 days (89 patients)	36	32
Haemorrhoidectomy	34 days (12 patients)	111	83
Hysteroscopy	33 days (102 patients)	27	43
Inguinal herniorrhaphy	77 days (57 patients)	108	76
Myringoplasty / Tympanoplasty	279 days (12 patients)	*	335
Myringotomy	* (< 5 patients)	n/a	197
Other - General	20 days (76 patients)	29	21
Prostatectomy	71 days (37 patients)	83	70
Septoplasty	344 days (13 patients)	342	344
Tonsillectomy	358 days (82 patients)	336	330
Total hip replacement	* (< 5 patients)	*	147
Total knee replacement	n/a (0 patients)	n/a	253
Varicose veins stripping and ligation	n/a (0 patients)	n/a	79

Liverpool Hospital: Elective surgery waiting list

January to March 2018

Patients ready for surgery on waiting list at start of quarter: 2,599 patients

Patients ready for surgery on waiting list at end of quarter: 2,484 patients

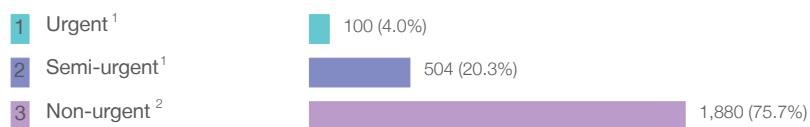
Patients not ready for surgery⁸ on waiting list at end of quarter: 557 patients

Same period last year	Change since one year ago
2,183	19%
2,419	3%
587	-5%

Liverpool Hospital: Patients ready for elective surgery

as at 31st March 2018

Patients ready for surgery on waiting list by urgency category: 2,484 patients



Same period last year	Change since one year ago
119	-16%
585	-14%
1,715	10%

Liverpool Hospital: Patients ready for elective surgery as at 31st March 2018

Patients ready for elective surgery by specialty of surgeon: 2,484 patients

	As at 31 Mar 2018	Same time last year	Change since one year ago
All specialties	2,484	2,419	3%
Cardiothoracic surgery	58	53	9%
Ear, nose and throat surgery	439	457	-4%
General surgery	540	694	-22%
Gynaecology	215	261	-18%
Medical	0	0	n/a
Neurosurgery	290	177	64%
Ophthalmology	555	394	41%
Orthopaedic surgery	35	40	-13%
Plastic surgery	89	69	29%
Urology	180	205	-12%
Vascular surgery	83	69	20%

Patients ready for elective surgery for common procedures ⁷

	As at 31 Mar 2018	Same time last year	Change since one year ago
Abdominal hysterectomy	37	38	-3%
Cataract extraction	479	319	50%
Cholecystectomy	103	119	-13%
Coronary artery bypass graft	17	21	-19%
Cystoscopy	27	30	-10%
Haemorrhoidectomy	9	16	-44%
Hysteroscopy	73	72	1%
Inguinal herniorrhaphy	97	82	18%
Myringoplasty / Tympanoplasty	27	34	-21%
Myringotomy	9	8	13%
Other - General	43	40	8%
Prostatectomy	26	39	-33%
Septoplasty	48	42	14%
Tonsillectomy	197	193	2%
Total hip replacement	< 5	< 5	*
Total knee replacement	< 5	< 5	*
Varicose veins stripping and ligation	0	< 5	n/a

Liverpool Hospital: Patients ready for elective surgery as at 31st March 2018

Patients ready for elective surgery, on the waiting list for longer than 12 months

As at 31 Mar 2018

Same time last year

All specialties	7	16
-----------------	---	----

* Suppressed due to small numbers and to protect privacy. Relevant graphs are also suppressed.

< 5 Less than five patients. For measures by urgency category, counts are included in an adjacent category. Relevant graphs are also suppressed.

1. Excluding staged procedures.
2. Excluding staged procedures and cystoscopy.
3. Including non-urgent cystoscopy.
4. Excludes the total number of days the patient was coded as 'not ready for surgery'.
5. This is the number of days it took for half of patients who received elective surgery during the period to be admitted and receive their surgery. The other half took equal to or longer than the median to be admitted for surgery.
6. This is the number of days it took for 90% of patients who received elective surgery during the period to be admitted and receive their surgery. The final 10% of patients took equal to or longer than the 90th percentile.
7. The procedures included in this list are procedures which are high volume; some may be associated with long waiting periods. For a description of these procedures see *Elective Surgery Glossary of Common Procedures, December 2012*.
8. Includes staged procedures, non-urgent cystoscopy, and patients currently not available for personal reasons.

For more information: For details of methods, see the *Technical Supplement: Elective surgery measures, January to March 2018*.

Note: All percentages rounded to whole numbers and therefore percentages may not add to 100%.

Source: Waiting List Collection On-Line System, NSW Health (extracted 13 April 2018.).