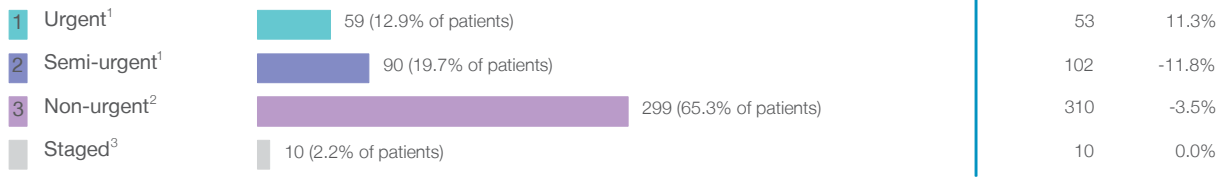


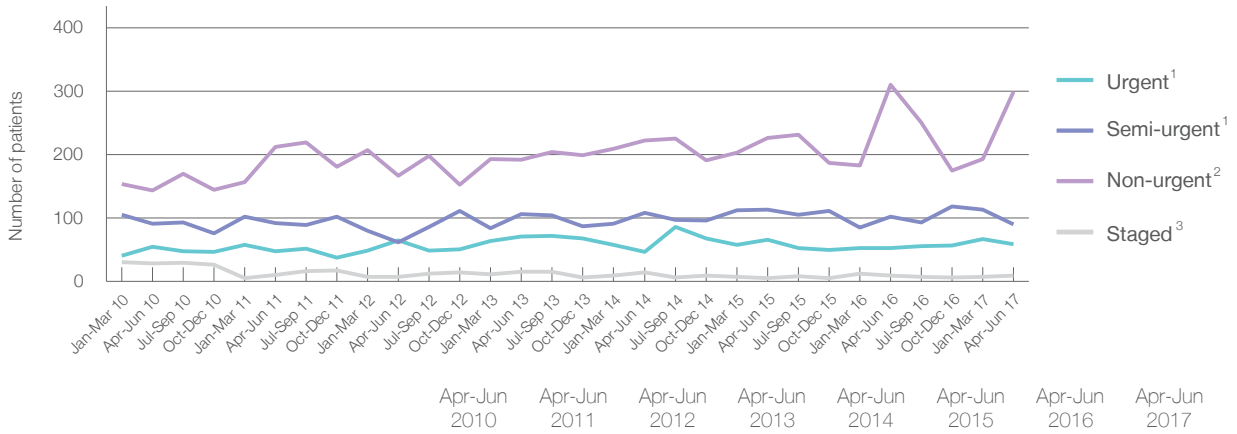
Bowral and District Hospital: Elective surgery performed

April to June 2017

Patients who received elective surgery by urgency category: 458 patients



Patients who received elective surgery by urgency category by quarter, April 2012 to June 2017



	Apr-Jun 2010	Apr-Jun 2011	Apr-Jun 2012	Apr-Jun 2013	Apr-Jun 2014	Apr-Jun 2015	Apr-Jun 2016	Apr-Jun 2017
All categories	319	363	302	385	392	410	475	458
Urgent ¹	55	48	65	71	47	66	53	59
Semi-urgent ¹	91	92	62	106	108	113	102	90
Non-urgent ²	144	212	167	192	222	226	310	299
Staged ³	29	11	8	16	15	5	10	10

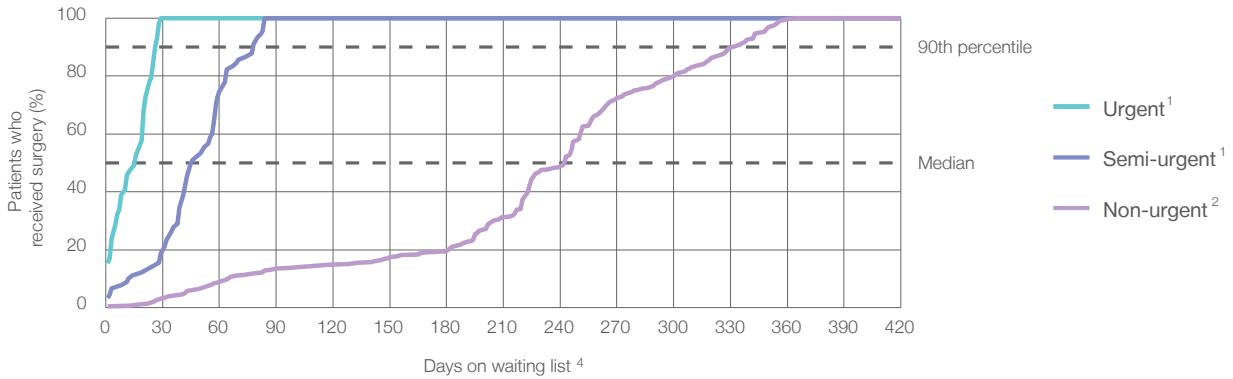
Bowral and District Hospital: Time waited to receive elective surgery

April to June 2017

Percentage of patients who received surgery within the clinically recommended timeframe

	Recommended:		Same period last year	Peer group (this period)
1 Urgent ¹	30 days	100%	100%	99.8%
2 Semi-urgent ¹	90 days	100%	100%	99.6%
3 Non-urgent ²	365 days	100%	100%	98.6%

Percentage of patients who received elective surgery by waiting time (days)



Waiting time (days) for people who received surgery by urgency category

		Peer group (this period)	This hospital (same period last year)	Peer group (same period last year)
1 Urgent: ¹ 59 patients				
Median time to receive surgery	16 days	14	20	15
90th percentile time to receive surgery	*	27	*	28
2 Semi-urgent: ¹ 90 patients				
Median time to receive surgery	46 days	47	43	50
90th percentile time to receive surgery	*	81	68	81
3 Non-urgent: ² 299 patients				
Median time to receive surgery	243 days	257	286	267
90th percentile time to receive surgery	332 days	351	344	348

Bowral and District Hospital: Time waited to receive elective surgery

April to June 2017

Median ⁵ waiting time (days) for patients who received elective surgery by specialty of surgeon		Same period last year	Peer group (this period)
Cardiothoracic surgery	n/a (0 patients)	n/a	n/a
Ear, nose and throat surgery	n/a (0 patients)	n/a	125
General surgery	39 days (112 patients)	40	42
Gynaecology	41 days (70 patients)	36	41
Medical	n/a (0 patients)	n/a	8
Neurosurgery	n/a (0 patients)	n/a	n/a
Ophthalmology	222 days (145 patients)	302	285
Orthopaedic surgery	273 days (131 patients)	296	168
Plastic surgery	n/a (0 patients)	n/a	42
Urology	n/a (0 patients)	n/a	29
Vascular surgery	n/a (0 patients)	n/a	82

Median ⁵ waiting time (days) for patients who received elective surgery by common procedures ⁷		Same period last year	Peer group (this period)
Abdominal hysterectomy	* (< 5 patients)	*	103
Cataract extraction	222 days (143 patients)	303	285
Cholecystectomy	32 days (15 patients)	48	47
Coronary artery bypass graft	n/a (0 patients)	n/a	n/a
Cystoscopy	* (< 5 patients)	n/a	28
Haemorrhoidectomy	n/a (0 patients)	n/a	70
Hysteroscopy	43 days (27 patients)	31	35
Inguinal herniorrhaphy	57 days (12 patients)	54	73
Myringoplasty / Tympanoplasty	n/a (0 patients)	n/a	*
Myringotomy	n/a (0 patients)	n/a	*
Other - General	* (5 patients)	*	19
Prostatectomy	n/a (0 patients)	n/a	66
Septoplasty	n/a (0 patients)	n/a	308
Tonsillectomy	n/a (0 patients)	n/a	89
Total hip replacement	331 days (23 patients)	333	217
Total knee replacement	319 days (29 patients)	289	242
Varicose veins stripping and ligation	n/a (0 patients)	n/a	88

Bowral and District Hospital: Elective surgery waiting list

April to June 2017

Patients ready for surgery on waiting list at start of quarter: 794 patients

Patients ready for surgery on waiting list at end of quarter: 707 patients

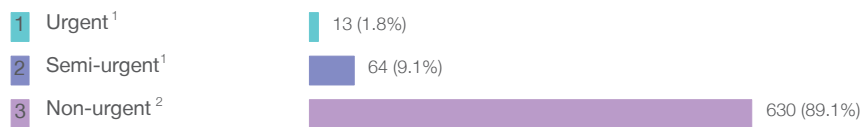
Patients not ready for surgery⁸ on waiting list at end of quarter: 91 patients

	Same period last year	Change since one year ago
Patients ready for surgery on waiting list at start of quarter	781	1.7%
Patients ready for surgery on waiting list at end of quarter	639	10.6%
Patients not ready for surgery ⁸ on waiting list at end of quarter	107	-15.0%

Bowral and District Hospital: Patients ready for elective surgery

as at 30th June 2017

Patients ready for surgery on waiting list by urgency category: 707 patients



	Same period last year	Change since one year ago
Urgent ¹	9	44.4%
Semi-urgent ¹	44	45.5%
Non-urgent ²	586	7.5%

Bowral and District Hospital: Patients ready for elective surgery

as at 30th June 2017

Patients ready for elective surgery by specialty of surgeon: 707 patients

	As at 30 Jun 2017	Same time last year	Change since one year ago
All specialties	707	639	10.6%
Cardiothoracic surgery	0	0	n/a
Ear, nose and throat surgery	0	0	n/a
General surgery	87	80	8.8%
Gynaecology	62	46	34.8%
Medical	0	0	n/a
Neurosurgery	0	0	n/a
Ophthalmology	189	196	-3.6%
Orthopaedic surgery	369	317	16.4%
Plastic surgery	0	0	n/a
Urology	0	0	n/a
Vascular surgery	0	0	n/a

Patients ready for elective surgery for common procedures⁷

	As at 30 Jun 2017	Same time last year	Change since one year ago
Abdominal hysterectomy	8	11	-27.3%
Cataract extraction	186	193	-3.6%
Cholecystectomy	12	15	-20.0%
Coronary artery bypass graft	0	< 5	n/a
Cystoscopy	< 5	< 5	*
Haemorrhoidectomy	< 5	< 5	*
Hysteroscopy	21	12	75.0%
Inguinal herniorrhaphy	11	14	-21.4%
Myringoplasty / Tympanoplasty	0	< 5	n/a
Myringotomy	0	< 5	n/a
Other - General	< 5	< 5	*
Prostatectomy	0	< 5	n/a
Septoplasty	0	< 5	n/a
Tonsillectomy	0	< 5	n/a
Total hip replacement	89	78	14.1%
Total knee replacement	169	119	42.0%
Varicose veins stripping and ligation	0	< 5	*

Bowral and District Hospital: Patients ready for elective surgery
as at 30th June 2017

Patients ready for elective surgery, on the waiting list for longer than 12 months

	As at 30 Jun 2017	Same time last year
All specialties	0	0

* Suppressed due to small numbers and to protect privacy. Relevant graphs are also suppressed.

< 5 Less than five patients. For measures by urgency category, counts are included in an adjacent category. Relevant graphs are also suppressed.

1. Excluding staged procedures.
2. Excluding staged procedures and cystoscopy.
3. Including non-urgent cystoscopy.
4. Excludes the total number of days the patient was coded as 'not ready for surgery'.
5. This is the number of days it took for half of patients who received elective surgery during the period to be admitted and receive their surgery. The other half took equal to or longer than the median to be admitted for surgery.
6. This is the number of days it took for 90% of patients who received elective surgery during the period to be admitted and receive their surgery. The final 10% of patients took equal to or longer than the 90th percentile.
7. The procedures included in this list are procedures which are high volume; some may be associated with long waiting periods. For a description of these procedures see *Elective Surgery Glossary of Common Procedures, December 2012*.
8. Includes staged procedures, non-urgent cystoscopy, and patients currently not available for personal reasons.

For more information: For details of methods, see the *Technical Supplement: Elective surgery measures, July to September 2016*.

Note: All percentages rounded to whole numbers and therefore percentages may not add to 100%.

Source: Waiting List Collection On-Line System, NSW Health (extracted 18 July 2017.).