

Healthcare Quarterly

Performance Profiles

Elective Surgery

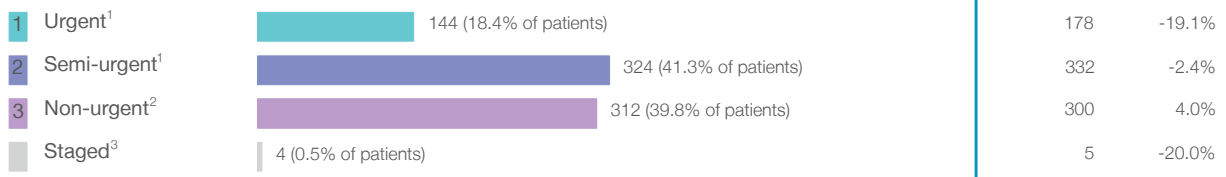
Sydney Children's Hospitals Network

April to June 2017

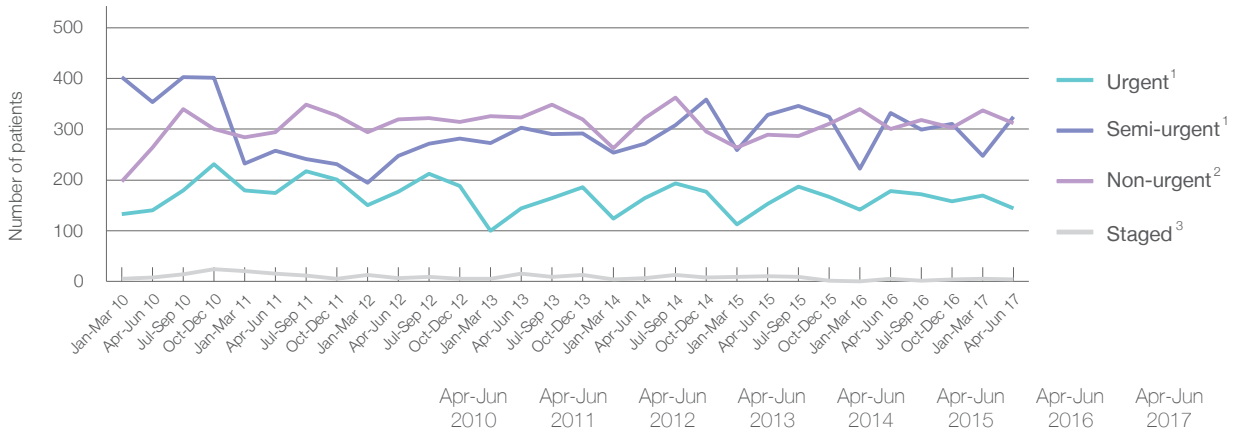
Sydney Children's Hospital: Elective surgery performed

April to June 2017

Patients who received elective surgery by urgency category: 784 patients



Patients who received elective surgery by urgency category by quarter, April 2012 to June 2017



	Apr-Jun 2010	Apr-Jun 2011	Apr-Jun 2012	Apr-Jun 2013	Apr-Jun 2014	Apr-Jun 2015	Apr-Jun 2016	Apr-Jun 2017
All categories	765	743	750	786	766	781	815	784
Urgent ¹	140	175	177	144	165	153	178	144
Semi-urgent ¹	353	258	247	303	272	328	332	324
Non-urgent ²	264	294	319	323	322	289	300	312
Staged ³	8	16	7	16	7	11	5	4

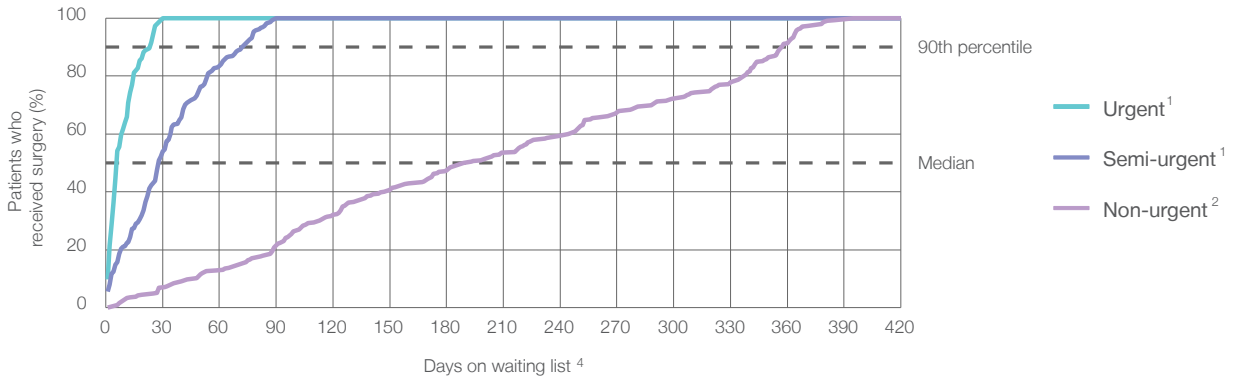
Sydney Children's Hospital: Time waited to receive elective surgery

April to June 2017

Percentage of patients who received surgery within the clinically recommended timeframe

	Recommended: (days)	Percentage	Same period last year	Peer group (this period)
1 Urgent ¹	30 days	100%	100%	99.7%
2 Semi-urgent ¹	90 days	100%	98.5%	99.9%
3 Non-urgent ²	365 days	95.8%	88.3%	90.7%

Percentage of patients who received elective surgery by waiting time (days)



Waiting time (days) for people who received surgery by urgency category

Urgency Category	Number of Patients	Median time to receive surgery (days)	90th percentile time to receive surgery (days)	Peer group (this period)	This hospital (same period last year)	Peer group (same period last year)
1 Urgent ¹	144 patients	6 days	24 days	6	6	5
2 Semi-urgent ¹	324 patients	28 days	72 days	35	25	37
3 Non-urgent ²	312 patients	191 days	357 days	189	179	204

Sydney Children's Hospital: Time waited to receive elective surgery

April to June 2017

Median ⁵ waiting time (days) for patients who received elective surgery by specialty of surgeon	Same period last year	Peer group (this period)
Cardiothoracic surgery	7 days (16 patients)	13
Ear, nose and throat surgery	167 days (137 patients)	126
General surgery	27 days (284 patients)	18
Gynaecology	* (< 5 patients)	*
Medical	9 days (18 patients)	17
Neurosurgery	15 days (32 patients)	16
Ophthalmology	125 days (31 patients)	60
Orthopaedic surgery	73 days (91 patients)	58
Plastic surgery	116 days (81 patients)	57
Urology	33 days (90 patients)	28
Vascular surgery	n/a (0 patients)	n/a

Median ⁵ waiting time (days) for patients who received elective surgery by common procedures ⁷	Same period last year	Peer group (this period)
Abdominal hysterectomy	n/a (0 patients)	n/a
Cataract extraction	* (< 5 patients)	*
Cholecystectomy	* (< 5 patients)	*
Coronary artery bypass graft	n/a (0 patients)	n/a
Cystoscopy	26 days (16 patients)	14
Haemorrhoidectomy	n/a (0 patients)	n/a
Hysteroscopy	n/a (0 patients)	n/a
Inguinal herniorrhaphy	8 days (39 patients)	14
Myringoplasty / Tympanoplasty	* (< 5 patients)	*
Myringotomy	n/a (0 patients)	n/a
Other - General	27 days (135 patients)	17
Prostatectomy	n/a (0 patients)	n/a
Septoplasty	n/a (0 patients)	n/a
Tonsillectomy	216 days (79 patients)	165
Total hip replacement	n/a (0 patients)	n/a
Total knee replacement	n/a (0 patients)	n/a
Varicose veins stripping and ligation	n/a (0 patients)	n/a

Sydney Children's Hospital: Elective surgery waiting list

April to June 2017

Patients ready for surgery on waiting list at start of quarter: 942 patients

Patients ready for surgery on waiting list at end of quarter: 900 patients

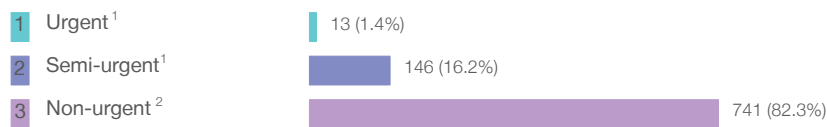
Patients not ready for surgery⁸ on waiting list at end of quarter: 146 patients

	Same period last year	Change since one year ago
Patients ready for surgery on waiting list at start of quarter	962	-2.1%
Patients ready for surgery on waiting list at end of quarter	1,020	-11.8%
Patients not ready for surgery ⁸ on waiting list at end of quarter	161	-9.3%

Sydney Children's Hospital: Patients ready for elective surgery

as at 30th June 2017

Patients ready for surgery on waiting list by urgency category: 900 patients



	Same period last year	Change since one year ago
Urgent ¹	13	0.0%
Semi-urgent ¹	212	-31.1%
Non-urgent ²	795	-6.8%

Sydney Children's Hospital: Patients ready for elective surgery as at 30th June 2017

Patients ready for elective surgery by specialty of surgeon: 900 patients

	As at 30 Jun 2017	Same time last year	Change since one year ago
All specialties	900	1,020	-11.8%
Cardiothoracic surgery	< 5	< 5	*
Ear, nose and throat surgery	366	404	-9.4%
General surgery	185	224	-17.4%
Gynaecology	0	< 5	*
Medical	< 5	6	*
Neurosurgery	10	17	-41.2%
Ophthalmology	58	44	31.8%
Orthopaedic surgery	122	118	3.4%
Plastic surgery	115	140	-17.9%
Urology	41	61	-32.8%
Vascular surgery	0	0	n/a

Patients ready for elective surgery for common procedures ⁷

	As at 30 Jun 2017	Same time last year	Change since one year ago
Abdominal hysterectomy	0	< 5	n/a
Cataract extraction	0	< 5	*
Cholecystectomy	0	< 5	*
Coronary artery bypass graft	0	< 5	n/a
Cystoscopy	5	7	-28.6%
Haemorrhoidectomy	0	< 5	n/a
Hysteroscopy	0	< 5	n/a
Inguinal herniorrhaphy	8	18	-55.6%
Myringoplasty / Tympanoplasty	5	5	0.0%
Myringotomy	< 5	< 5	n/a
Other - General	82	97	-15.5%
Prostatectomy	0	< 5	n/a
Septoplasty	< 5	< 5	n/a
Tonsillectomy	197	211	-6.6%
Total hip replacement	0	< 5	*
Total knee replacement	0	< 5	n/a
Varicose veins stripping and ligation	0	< 5	n/a

Sydney Children's Hospital: Patients ready for elective surgery as at 30th June 2017

Patients ready for elective surgery, on the waiting list for longer than 12 months

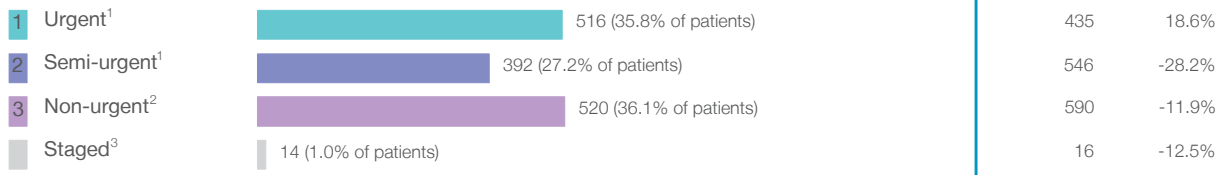
	As at 30 Jun 2017	Same time last year
All specialties	0	0

- * Suppressed due to small numbers and to protect privacy. Relevant graphs are also suppressed.
- < 5 Less than five patients. For measures by urgency category, counts are included in an adjacent category. Relevant graphs are also suppressed.
1. Excluding staged procedures.
 2. Excluding staged procedures and cystoscopy.
 3. Including non-urgent cystoscopy.
 4. Excludes the total number of days the patient was coded as 'not ready for surgery'.
 5. This is the number of days it took for half of patients who received elective surgery during the period to be admitted and receive their surgery. The other half took equal to or longer than the median to be admitted for surgery.
 6. This is the number of days it took for 90% of patients who received elective surgery during the period to be admitted and receive their surgery. The final 10% of patients took equal to or longer than the 90th percentile.
 7. The procedures included in this list are procedures which are high volume; some may be associated with long waiting periods. For a description of these procedures see *Elective Surgery Glossary of Common Procedures, December 2012*.
 8. Includes staged procedures, non-urgent cystoscopy, and patients currently not available for personal reasons.
- For more information: For details of methods, see the *Technical Supplement: Elective surgery measures, July to September 2016*.
- Note:** All percentages rounded to whole numbers and therefore percentages may not add to 100%.
- Source:** Waiting List Collection On-Line System, NSW Health (extracted 18 July 2017.).

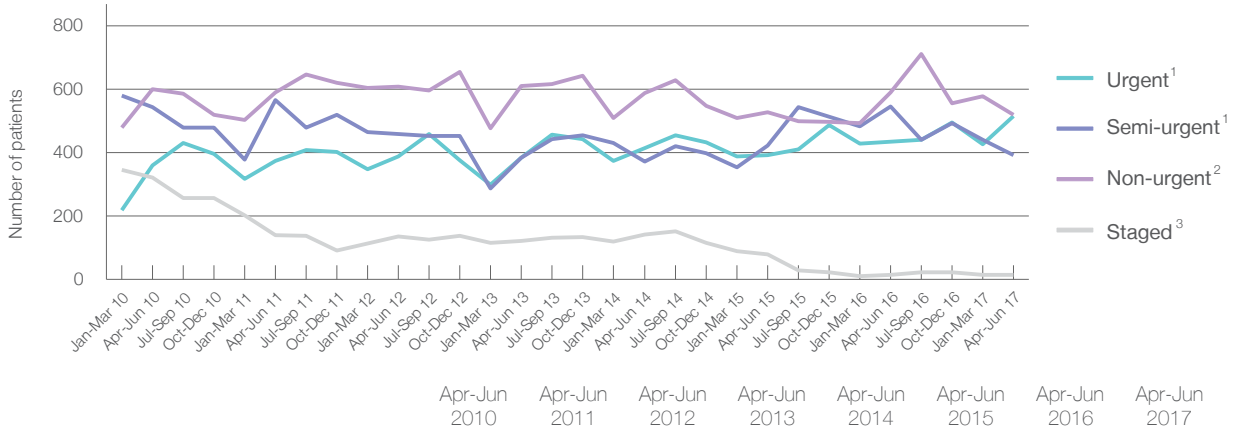
The Children's Hospital at Westmead: Elective surgery performed

April to June 2017

Patients who received elective surgery by urgency category: 1,442 patients



Patients who received elective surgery by urgency category by quarter, April 2012 to June 2017



	Apr-Jun 2010	Apr-Jun 2011	Apr-Jun 2012	Apr-Jun 2013	Apr-Jun 2014	Apr-Jun 2015	Apr-Jun 2016	Apr-Jun 2017
All categories	1,824	1,668	1,592	1,500	1,516	1,422	1,587	1,442
Urgent ¹	359	373	389	385	415	392	435	516
Semi-urgent ¹	544	566	459	384	372	422	546	392
Non-urgent ²	600	589	608	609	587	528	590	520
Staged ³	321	140	136	122	142	80	16	14

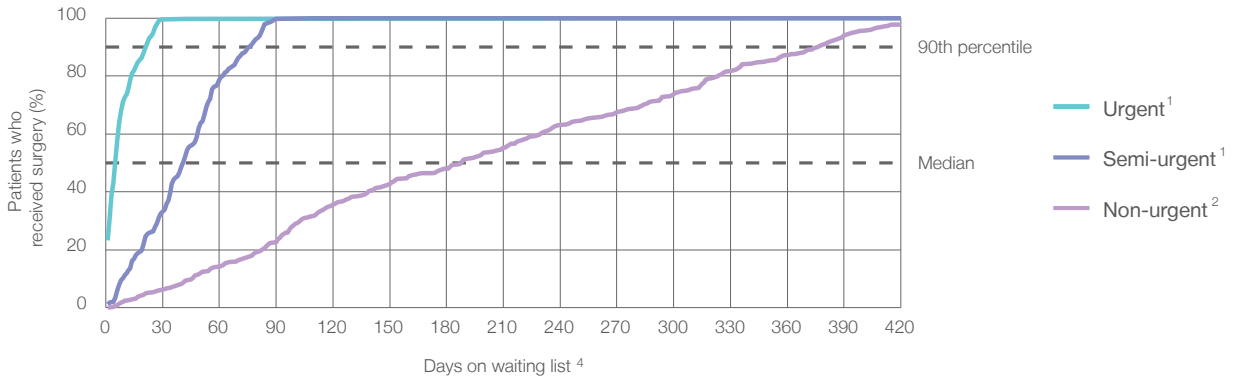
The Children's Hospital at Westmead: Time waited to receive elective surgery

April to June 2017

Percentage of patients who received surgery within the clinically recommended timeframe

	Recommended: (days)	Percentage	Same period last year	Peer group (this period)
1 Urgent ¹	30 days	99.6%	99.5%	99.7%
2 Semi-urgent ¹	90 days	99.7%	90.5%	99.9%
3 Non-urgent ²	365 days	87.7%	81.2%	90.7%

Percentage of patients who received elective surgery by waiting time (days)



Waiting time (days) for people who received surgery by urgency category

Urgency Category	Number of Patients	Median time to receive surgery (days)	90th percentile time to receive surgery (days)	Peer group (this period)	This hospital (same period last year)	Peer group (same period last year)
1 Urgent ¹	516 patients	5 days	22 days	6	5	5
2 Semi-urgent ¹	392 patients	41 days	76 days	35	44	37
3 Non-urgent ²	520 patients	189 days	377 days	189	225	204

The Children's Hospital at Westmead: Time waited to receive elective surgery

April to June 2017

Median ⁵ waiting time (days) for patients who received elective surgery by specialty of surgeon	Same period last year	Peer group (this period)	
Cardiothoracic surgery	39 days (58 patients)	40	27
Ear, nose and throat surgery	77 days (204 patients)	85	90
General surgery	16 days (462 patients)	35	21
Gynaecology	* (9 patients)	35	30
Medical	6 days (40 patients)	8	6
Neurosurgery	13 days (35 patients)	9	14
Ophthalmology	71 days (142 patients)	64	82
Orthopaedic surgery	52 days (278 patients)	70	55
Plastic surgery	28 days (179 patients)	56	53
Urology	27 days (35 patients)	104	32
Vascular surgery	n/a (0 patients)	n/a	n/a

Median ⁵ waiting time (days) for patients who received elective surgery by common procedures ⁷	Same period last year	Peer group (this period)	
Abdominal hysterectomy	* (< 5 patients)	n/a	*
Cataract extraction	15 days (12 patients)	*	16
Cholecystectomy	* (< 5 patients)	*	*
Coronary artery bypass graft	n/a (0 patients)	n/a	n/a
Cystoscopy	25 days (31 patients)	77	26
Haemorrhoidectomy	n/a (0 patients)	n/a	n/a
Hysteroscopy	n/a (0 patients)	n/a	n/a
Inguinal herniorrhaphy	9 days (59 patients)	19	8
Myringoplasty / Tympanoplasty	* (< 5 patients)	*	*
Myringotomy	* (< 5 patients)	*	*
Other - General	14 days (138 patients)	23	21
Prostatectomy	n/a (0 patients)	n/a	n/a
Septoplasty	* (< 5 patients)	n/a	*
Tonsillectomy	152 days (54 patients)	320	195
Total hip replacement	n/a (0 patients)	n/a	n/a
Total knee replacement	n/a (0 patients)	n/a	n/a
Varicose veins stripping and ligation	n/a (0 patients)	n/a	n/a

The Children's Hospital at Westmead: Elective surgery waiting list

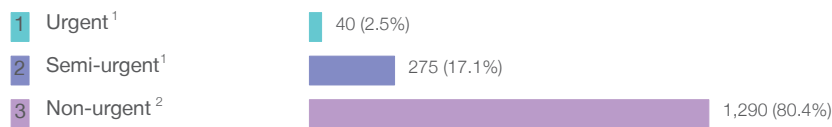
April to June 2017

	Same period last year	Change since one year ago
Patients ready for surgery on waiting list at start of quarter: 1,637 patients	1,937	-15.5%
Patients ready for surgery on waiting list at end of quarter: 1,605 patients	1,770	-9.3%
Patients not ready for surgery ⁸ on waiting list at end of quarter: 369 patients	396	-6.8%

The Children's Hospital at Westmead: Patients ready for elective surgery

as at 30th June 2017

Patients ready for surgery on waiting list by urgency category: 1,605 patients



	Same period last year	Change since one year ago
Urgent	43	-7.0%
Semi-urgent	323	-14.9%
Non-urgent	1,404	-8.1%

The Children's Hospital at Westmead: Patients ready for elective surgery as at 30th June 2017

Patients ready for elective surgery by specialty of surgeon: 1,605 patients

	As at 30 Jun 2017	Same time last year	Change since one year ago
All specialties	1,605	1,770	-9.3%
Cardiothoracic surgery	41	42	-2.4%
Ear, nose and throat surgery	383	444	-13.7%
General surgery	311	402	-22.6%
Gynaecology	10	< 5	*
Medical	< 5	8	*
Neurosurgery	8	10	-20.0%
Ophthalmology	258	249	3.6%
Orthopaedic surgery	352	364	-3.3%
Plastic surgery	206	202	2.0%
Urology	34	45	-24.4%
Vascular surgery	0	0	n/a

Patients ready for elective surgery for common procedures ⁷

	As at 30 Jun 2017	Same time last year	Change since one year ago
Abdominal hysterectomy	0	< 5	*
Cataract extraction	8	7	14.3%
Cholecystectomy	< 5	< 5	*
Coronary artery bypass graft	0	< 5	n/a
Cystoscopy	5	8	-37.5%
Haemorrhoidectomy	0	< 5	n/a
Hysteroscopy	0	< 5	n/a
Inguinal herniorrhaphy	24	24	0.0%
Myringoplasty / Tympanoplasty	12	10	20.0%
Myringotomy	6	< 5	*
Other - General	75	103	-27.2%
Prostatectomy	0	< 5	n/a
Septoplasty	< 5	8	*
Tonsillectomy	115	138	-16.7%
Total hip replacement	0	< 5	n/a
Total knee replacement	0	< 5	n/a
Varicose veins stripping and ligation	0	< 5	n/a

The Children's Hospital at Westmead: Patients ready for elective surgery
as at 30th June 2017

Patients ready for elective surgery, on the waiting list for longer than 12 months

As at 30 Jun 2017 Same time last year

	As at 30 Jun 2017	Same time last year
All specialties	20	13

* Suppressed due to small numbers and to protect privacy. Relevant graphs are also suppressed.

< 5 Less than five patients. For measures by urgency category, counts are included in an adjacent category. Relevant graphs are also suppressed.

1. Excluding staged procedures.
2. Excluding staged procedures and cystoscopy.
3. Including non-urgent cystoscopy.
4. Excludes the total number of days the patient was coded as 'not ready for surgery'.
5. This is the number of days it took for half of patients who received elective surgery during the period to be admitted and receive their surgery. The other half took equal to or longer than the median to be admitted for surgery.
6. This is the number of days it took for 90% of patients who received elective surgery during the period to be admitted and receive their surgery. The final 10% of patients took equal to or longer than the 90th percentile.
7. The procedures included in this list are procedures which are high volume; some may be associated with long waiting periods. For a description of these procedures see *Elective Surgery Glossary of Common Procedures, December 2012*.
8. Includes staged procedures, non-urgent cystoscopy, and patients currently not available for personal reasons.

For more information: For details of methods, see the *Technical Supplement: Elective surgery measures, July to September 2016*.

Note: All percentages rounded to whole numbers and therefore percentages may not add to 100%.

Source: Waiting List Collection On-Line System, NSW Health (extracted 18 July 2017.).