

Griffith Base Hospital: Emergency department (ED) overview

October to December 2017

All presentations:¹ 5,087 patients
 Emergency presentations:² 4,778 patients

Same period last year	Change since one year ago
5,425	-6.2%
5,238	-8.8%

Griffith Base Hospital: Time patients waited to start treatment³

October to December 2017

Triage 2 Emergency (e.g. chest pain, severe burns): 508 patients

Median time to start treatment⁴ 6 minutes
 90th percentile time to start treatment⁵ 16 minutes

Triage 3 Urgent (e.g. moderate blood loss, dehydration): 1,905 patients

Median time to start treatment⁴ 14 minutes
 90th percentile time to start treatment⁵ 42 minutes

Triage 4 Semi-urgent (e.g. sprained ankle, earache): 1,773 patients

Median time to start treatment⁴ 16 minutes
 90th percentile time to start treatment⁵ 73 minutes

Triage 5 Non-urgent (e.g. small cuts or abrasions): 559 patients

Median time to start treatment⁴ 14 minutes
 90th percentile time to start treatment⁵ 68 minutes

Same period last year	NSW (this period)
443	
7 minutes	8 minutes
17 minutes	23 minutes
2,218	
17 minutes	20 minutes
60 minutes	65 minutes
2,116	
24 minutes	26 minutes
94 minutes	99 minutes
429	
24 minutes	23 minutes
90 minutes	103 minutes

Griffith Base Hospital: Time from presentation until leaving the ED

October to December 2017

Attendances used to calculate time to leaving the ED:⁶ 5,086 patients

Percentage of patients who spent four hours or less in the ED 80.5%

Same period last year	Change since one year ago
5,424	-6.2%
82.3%	

* Suppressed due to small number of patients and to protect privacy. Relevant graphs are also suppressed.

- All emergency and non-emergency attendances at the emergency department (ED).
- All attendances that have a triage category and are coded as emergency presentations or unplanned return visits.
- Some patients are excluded from ED time measures due to calculation requirements. For details, see the *Technical Supplement: Emergency department measures, July to September 2016*.
- The median is the time by which half of patients started treatment. The other half of patients waited equal to or longer than this time.
- The 90th percentile is the time by which 90% of patients started treatment. The final 10% of patients waited equal to or longer than this time.
- All presentations that have a departure time.

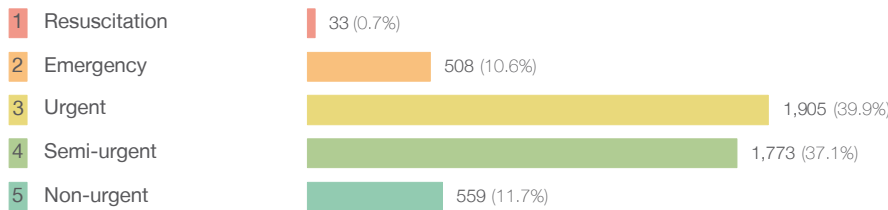
Note: Presentation time is the earlier time recorded for clerical registration or the triage process. Treatment time is the earliest time recorded when a healthcare professional provides medical care relevant to the patient's presenting problems.

Source: Health Information Exchange, NSW Health (extracted 23 January 2018).

Griffith Base Hospital: Patients presenting to the emergency department October to December 2017

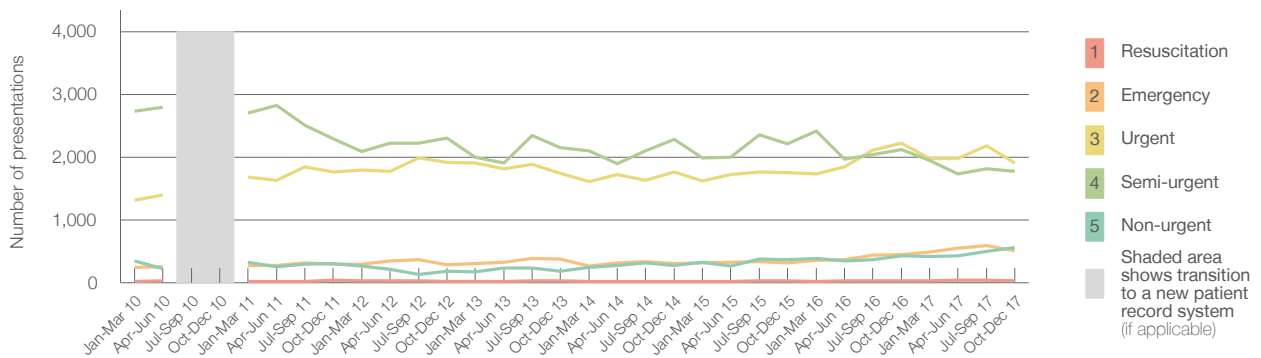
All presentations:¹ 5,087 patients

Emergency presentations² by triage category: 4,778 patients



	Same period last year	Change since one year ago
All presentations	5,425	-6.2%
Emergency presentations	5,238	-8.8%
1 Resuscitation	32	3.1%
2 Emergency	443	14.7%
3 Urgent	2,218	-14.1%
4 Semi-urgent	2,116	-16.2%
5 Non-urgent	429	30.3%

Emergency presentations² by quarter, January 2010 to December 2017 †



	Oct-Dec 2010	Oct-Dec 2011	Oct-Dec 2012	Oct-Dec 2013	Oct-Dec 2014	Oct-Dec 2015	Oct-Dec 2016	Oct-Dec 2017
Resuscitation		38	18	27	24	26	32	33
Emergency		292	283	379	304	316	443	508
Urgent		1,763	1,913	1,748	1,768	1,750	2,218	1,905
Semi-urgent		2,298	2,304	2,156	2,282	2,215	2,116	1,773
Non-urgent		300	181	178	278	364	429	559
All emergency presentations		4,691	4,699	4,488	4,656	4,671	5,238	4,778

Griffith Base Hospital: Patients arriving by ambulance October to December 2017

Arrivals used to calculate transfer of care time:⁷ 724 patients

ED Transfer of care time



	Same period last year	Change since one year ago
Arrivals used to calculate transfer of care time	808	
ED Transfer of care time		
Median time	12 minutes	-2 minutes
90th percentile time	24 minutes	-5 minutes

(†) Data points are not shown in graphs for quarters when patient numbers are too small.

(‡) Caution is advised when interpreting abrupt changes over time at the hospital level. For example, performance before and after transition to a new information system is not directly comparable. For more information, see Background Paper: Approaches to reporting time measures of emergency department performance, December 2011.

Griffith Base Hospital: Time patients waited to start treatment, triage 2 October to December 2017

Triage 2 Emergency (e.g. chest pain, severe burns)

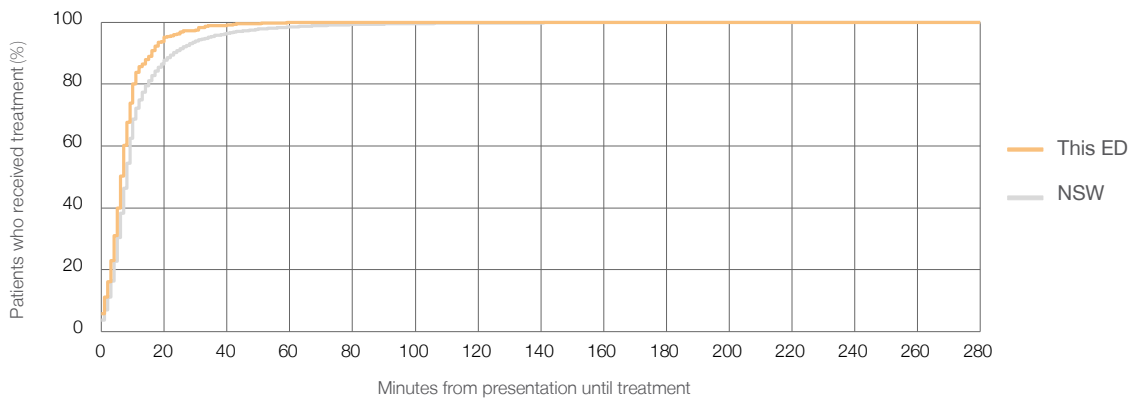
Number of triage 2 patients: 508

Number of triage 2 patients used to calculate waiting time:³ 505

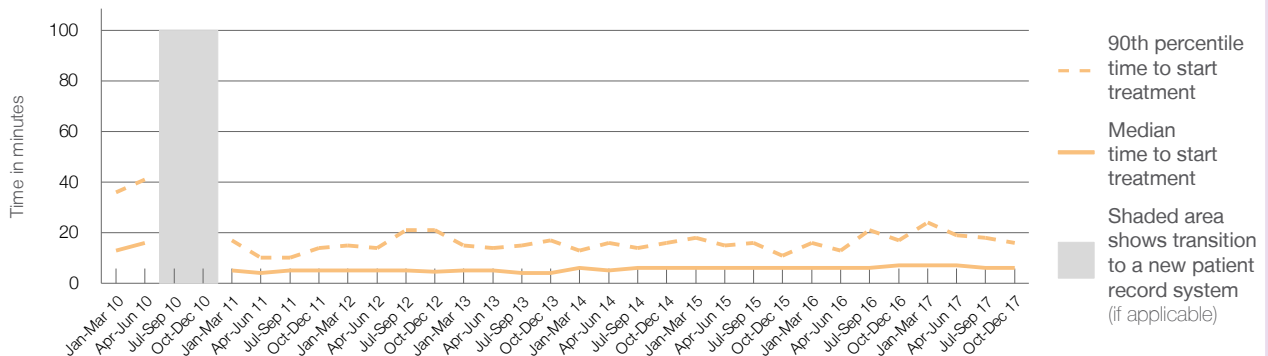
Median time to start treatment⁴ ■ 6 minutes
90th percentile time to start treatment⁵ ■ 16 minutes

Same period last year	NSW (this period)
443	
441	
7 minutes	8 minutes
17 minutes	23 minutes

Percentage of triage 2 patients who received treatment by time, October to December 2017



Time patients waited to start treatment (minutes) for triage 2 patients, January 2010 to December 2017^{†‡}



	Oct-Dec 2010	Oct-Dec 2011	Oct-Dec 2012	Oct-Dec 2013	Oct-Dec 2014	Oct-Dec 2015	Oct-Dec 2016	Oct-Dec 2017
Median time to start treatment ⁴ (minutes)		5	5	4	6	6	7	6
90th percentile time to start treatment ⁵ (minutes)		14	21	17	16	11	17	16

(†) Data points are not shown in graphs for quarters when patient numbers are too small.

(‡) Caution is advised when interpreting abrupt changes over time at the hospital level. For example, performance before and after transition to a new information system is not directly comparable. For more information, see Background Paper: Approaches to reporting time measures of emergency department performance, December 2011.

Griffith Base Hospital: Time patients waited to start treatment, triage 3 October to December 2017

Triage 3 Urgent (e.g. moderate blood loss, dehydration)

Number of triage 3 patients: 1,905

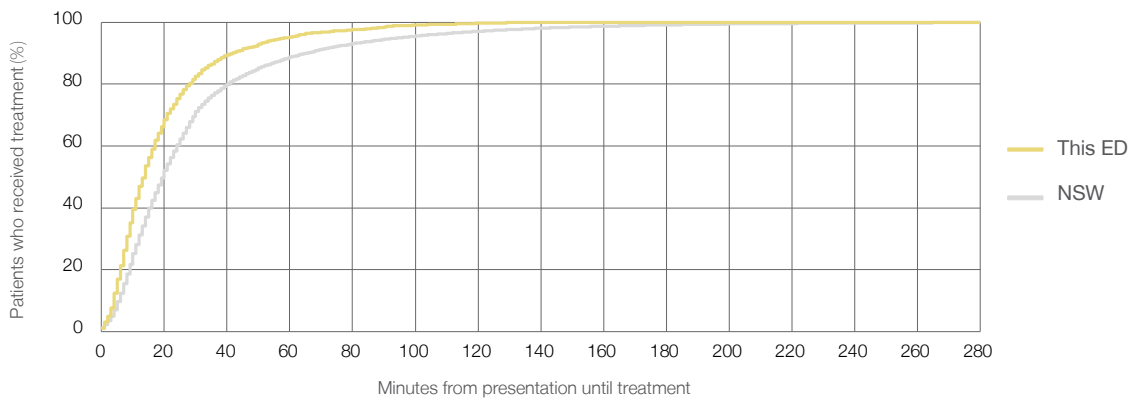
Number of triage 3 patients used to calculate waiting time:³ 1,883

Median time to start treatment⁴ 14 minutes

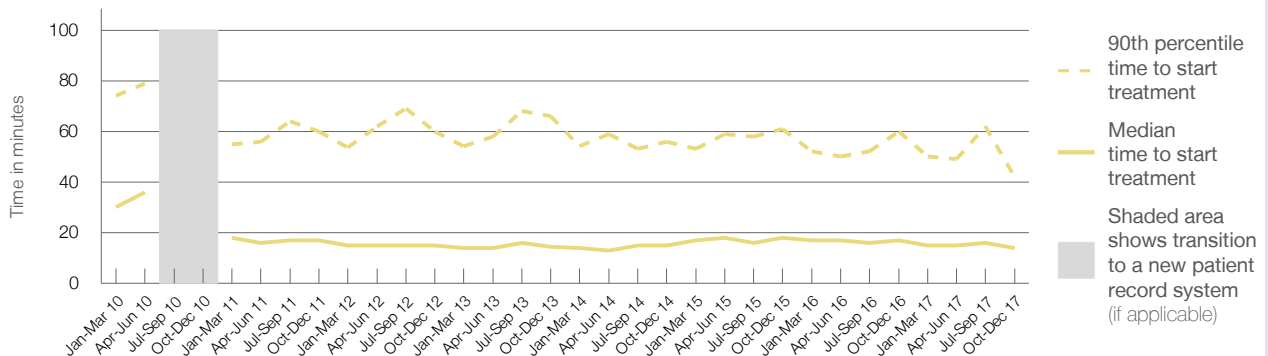
90th percentile time to start treatment⁵ 42 minutes

Same period last year	NSW (this period)
2,218	
2,180	
17 minutes	20 minutes
60 minutes	65 minutes

Percentage of triage 3 patients who received treatment by time, October to December 2017



Time patients waited to start treatment (minutes) for triage 3 patients, January 2010 to December 2017^{†‡}



	Oct-Dec 2010	Oct-Dec 2011	Oct-Dec 2012	Oct-Dec 2013	Oct-Dec 2014	Oct-Dec 2015	Oct-Dec 2016	Oct-Dec 2017
Median time to start treatment ⁴ (minutes)		17	15	15	15	18	17	14
90th percentile time to start treatment ⁵ (minutes)		60	60	66	56	61	60	42

(†) Data points are not shown in graphs for quarters when patient numbers are too small.

(‡) Caution is advised when interpreting abrupt changes over time at the hospital level. For example, performance before and after transition to a new information system is not directly comparable. For more information, see Background Paper: Approaches to reporting time measures of emergency department performance, December 2011.

Griffith Base Hospital: Time patients waited to start treatment, triage 4 October to December 2017

Triage 4 Semi-urgent (e.g. sprained ankle, earache)

Number of triage 4 patients: 1,773

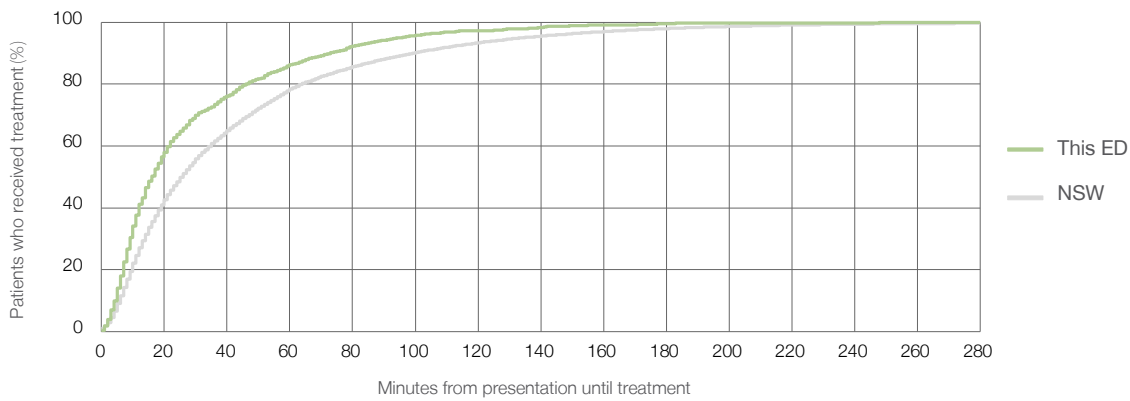
Number of triage 4 patients used to calculate waiting time:³ 1,708

Median time to start treatment⁴ 16 minutes

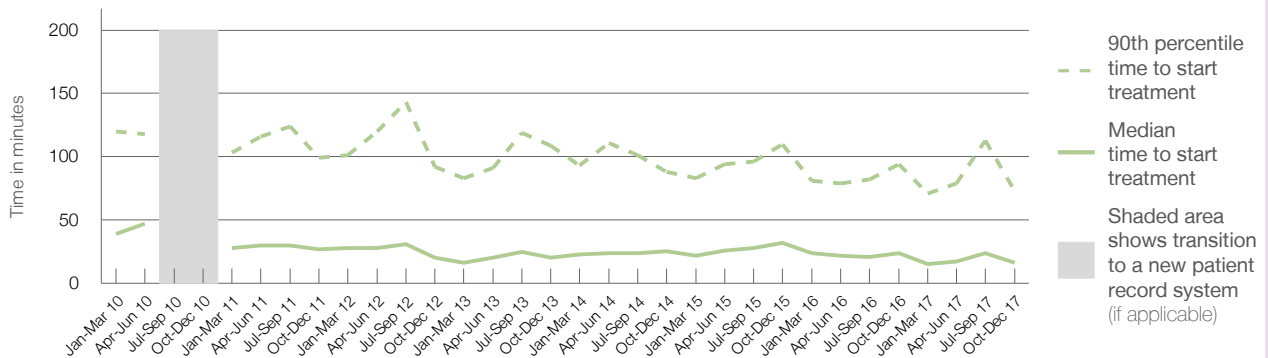
90th percentile time to start treatment⁵ 73 minutes

Same period last year	NSW (this period)
2,116	2,025
24 minutes	26 minutes
94 minutes	99 minutes

Percentage of triage 4 patients who received treatment by time, October to December 2017



Time patients waited to start treatment (minutes) for triage 4 patients, January 2010 to December 2017^{†‡}



	Oct-Dec 2010	Oct-Dec 2011	Oct-Dec 2012	Oct-Dec 2013	Oct-Dec 2014	Oct-Dec 2015	Oct-Dec 2016	Oct-Dec 2017
Median time to start treatment ⁴ (minutes)		27	20	20	26	32	24	16
90th percentile time to start treatment ⁵ (minutes)		99	92	109	88	110	94	73

(†) Data points are not shown in graphs for quarters when patient numbers are too small.

(‡) Caution is advised when interpreting abrupt changes over time at the hospital level. For example, performance before and after transition to a new information system is not directly comparable. For more information, see Background Paper: Approaches to reporting time measures of emergency department performance, December 2011.

Griffith Base Hospital: Time patients waited to start treatment, triage 5 October to December 2017

Triage 5 Non-urgent (e.g. small cuts or abrasions)

Number of triage 5 patients: 559

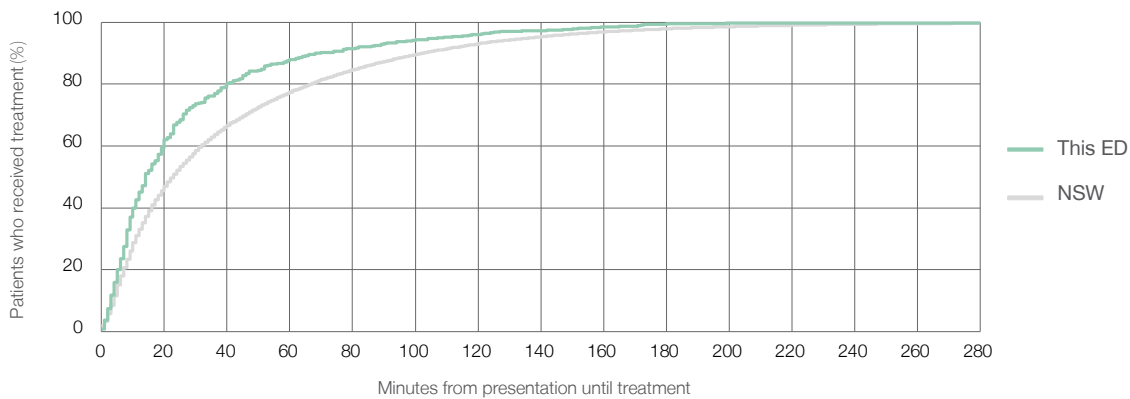
Number of triage 5 patients used to calculate waiting time:³ 521

Median time to start treatment⁴ 14 minutes

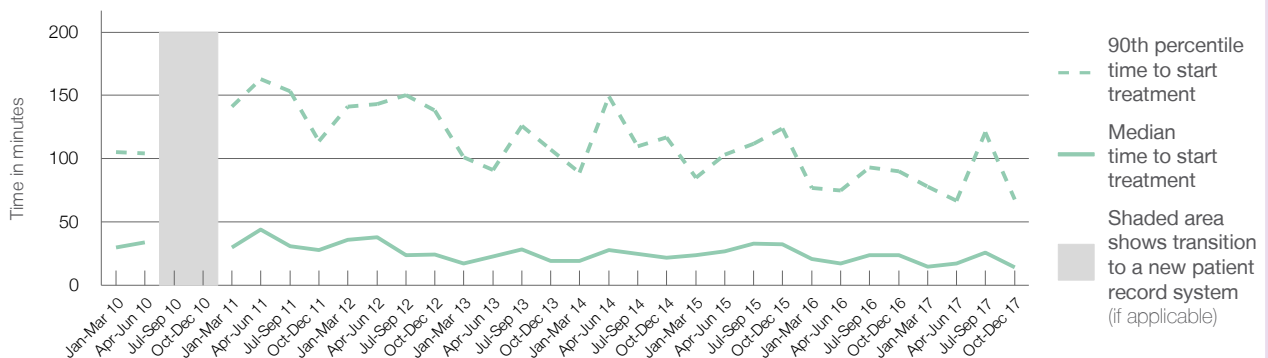
90th percentile time to start treatment⁵ 68 minutes

Same period last year	NSW (this period)
429	395
24 minutes	23 minutes
90 minutes	103 minutes

Percentage of triage 5 patients who received treatment by time, October to December 2017



Time patients waited to start treatment (minutes) for triage 5 patients, January 2010 to December 2017^{†‡}



	Oct-Dec 2010	Oct-Dec 2011	Oct-Dec 2012	Oct-Dec 2013	Oct-Dec 2014	Oct-Dec 2015	Oct-Dec 2016	Oct-Dec 2017
Median time to start treatment ⁴ (minutes)		28	25	19	22	33	24	14
90th percentile time to start treatment ⁵ (minutes)		114	138	107	117	124	90	68

(†) Data points are not shown in graphs for quarters when patient numbers are too small.

(‡) Caution is advised when interpreting abrupt changes over time at the hospital level. For example, performance before and after transition to a new information system is not directly comparable. For more information, see Background Paper: Approaches to reporting time measures of emergency department performance, December 2011.

Griffith Base Hospital: Time patients spent in the ED

October to December 2017

All presentations:¹ 5,087 patients

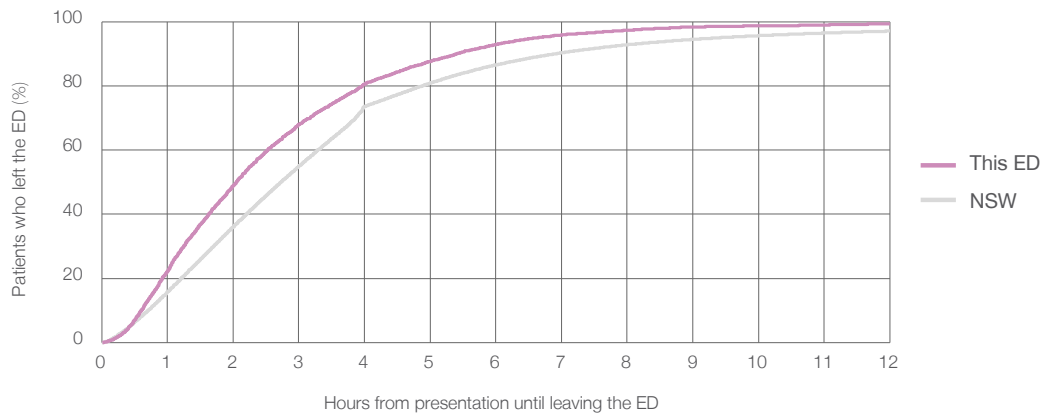
Presentations used to calculate time to leaving the ED:⁶ 5,086 patients

Median time spent in the ED⁸ 2 hours and 3 minutes

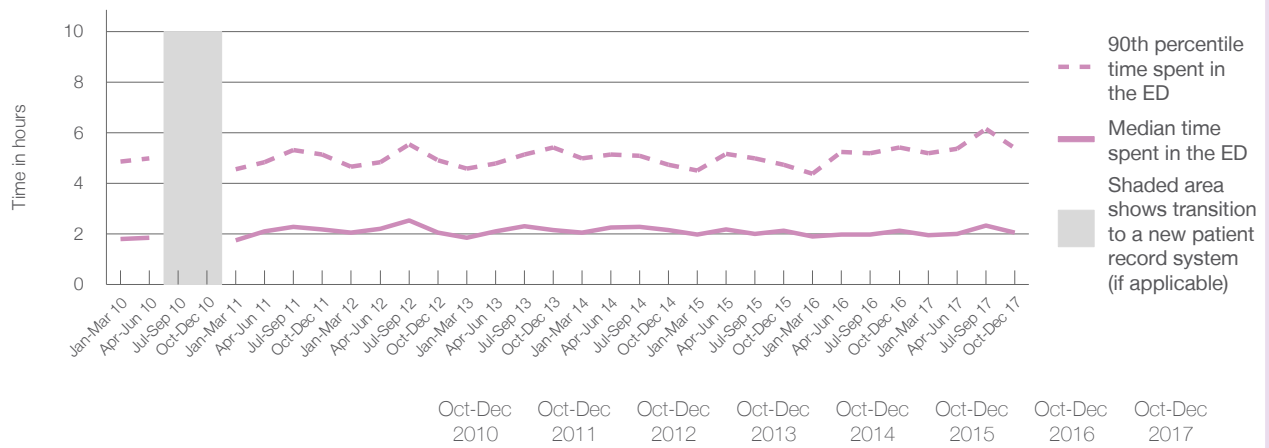
90th percentile time spent in the ED⁹ 5 hours and 24 minutes

Same period last year	NSW (this period)
5,425	
5,424	
2 hours and 8 minutes	2 hours and 44 minutes
5 hours and 25 minutes	6 hours and 55 minutes

Percentage of patients who left the ED by time, October to December 2017



Time patients spent in the ED, by quarter, January 2010 to December 2017^{†‡}



	Oct-Dec 2010	Oct-Dec 2011	Oct-Dec 2012	Oct-Dec 2013	Oct-Dec 2014	Oct-Dec 2015	Oct-Dec 2016	Oct-Dec 2017
Median time to leaving the ED ⁸ (hours, minutes)		2h 11m	2h 4m	2h 10m	2h 9m	2h 8m	2h 8m	2h 3m
90th percentile time to leaving the ED ⁹ (hours, minutes)		5h 9m	4h 55m	5h 25m	4h 45m	4h 45m	5h 25m	5h 24m

(†) Data points are not shown in graphs for quarters when patient numbers are too small.

(‡) Caution is advised when interpreting abrupt changes over time at the hospital level. For example, performance before and after transition to a new information system is not directly comparable. For more information, see Background Paper: Approaches to reporting time measures of emergency department performance, December 2011.

Griffith Base Hospital: Time patients spent in the ED
 By mode of separation
 October to December 2017

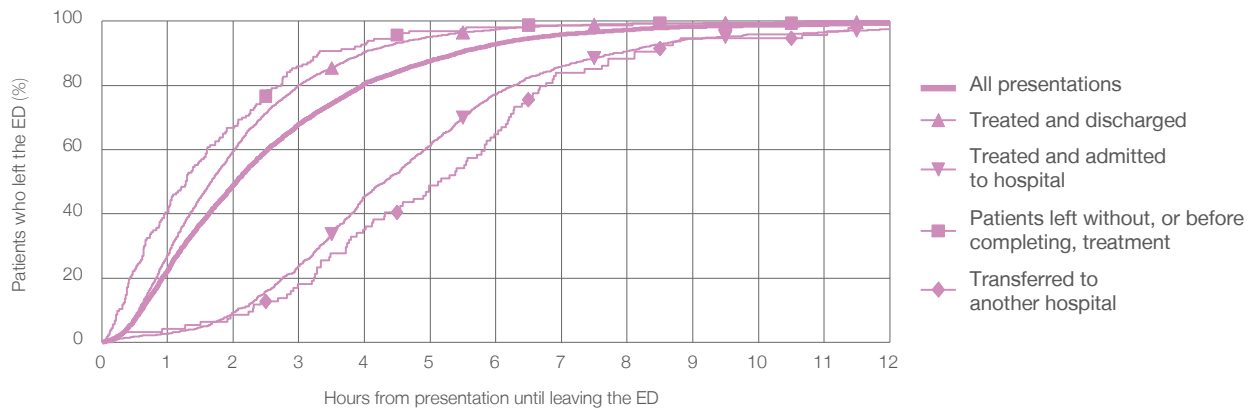
All presentations:¹ 5,087 patients

Presentations used to calculate time to leaving the ED:⁶ 5,086 patients

Treated and discharged	3,808 (74.9%)
Treated and admitted to hospital	1,009 (19.8%)
Patient left without, or before completing, treatment	163 (3.2%)
Transferred to another hospital	94 (1.8%)
Other	13 (0.3%)

Same period last year	Change since one year ago
5,424	-6.2%
3,815	-0.2%
1,305	-22.7%
207	-21.3%
82	14.6%
16	-18.8%

Percentage of patients who left the ED by time and mode of separation, October to December 2017^{†‡}



1 hour 2 hours 3 hours 4 hours 6 hours 8 hours 10 hours 12 hours

	1 hour	2 hours	3 hours	4 hours	6 hours	8 hours	10 hours	12 hours
Treated and discharged	27.1%	59.6%	80.1%	90.4%	97.4%	99.2%	99.6%	99.8%
Treated and admitted to hospital	2.6%	9.3%	23.8%	45.4%	77.2%	90.8%	95.8%	97.5%
Patient left without, or before completing, treatment	40.5%	66.9%	85.9%	92.6%	98.2%	98.8%	99.4%	100%
Transferred to another hospital	4.3%	8.5%	18.1%	35.1%	64.9%	88.3%	94.7%	98.9%
All presentations	22.4%	49.0%	68.0%	80.5%	92.8%	97.3%	98.7%	99.3%

(†) Data points are not shown in graphs for quarters when patient numbers are too small.

(‡) Caution is advised when interpreting abrupt changes over time at the hospital level. For example, performance before and after transition to a new information system is not directly comparable. For more information, see Background Paper: Approaches to reporting time measures of emergency department performance, December 2011.

Griffith Base Hospital: Time spent in the ED
 Percentage of patients who spent four hours or less in the ED
 October to December 2017

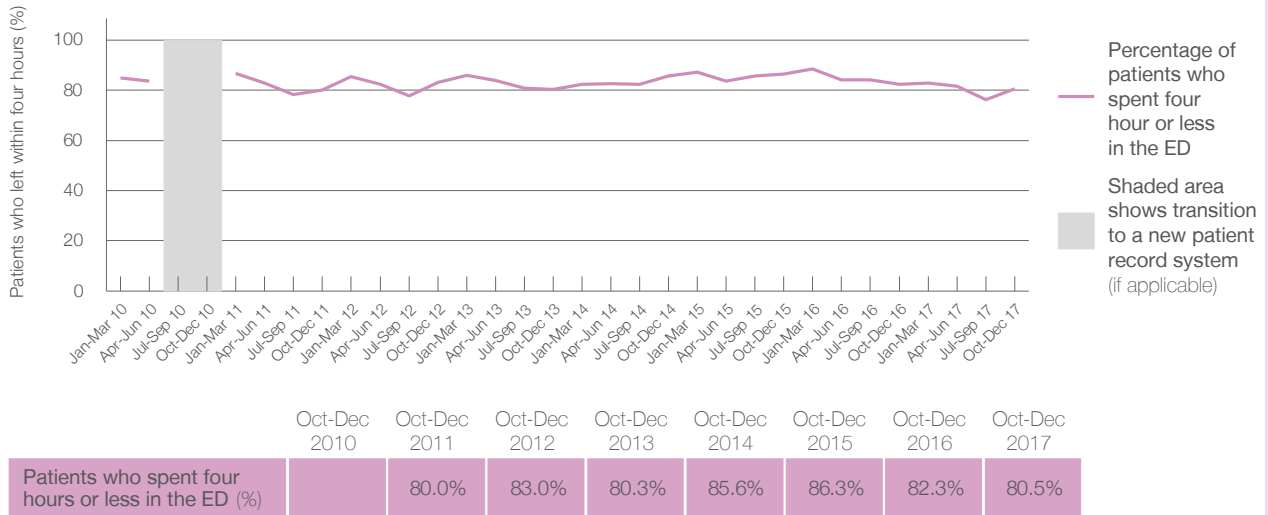
All presentations at the emergency department: ¹ 5,087 patients
 Presentations used to calculate time to leaving the ED: ⁶ 5,086 patients

Percentage of patients who spent four hours or less in the ED



	Same period last year	Change since one year ago
All presentations at the emergency department	5,425	-6.2%
Presentations used to calculate time to leaving the ED	5,424	-6.2%
Percentage of patients who spent four hours or less in the ED	82.3%	

Percentage of patients who spent four hours or less in the ED, by quarter, January 2010 to December 2017 ^{†‡}



* Suppressed due to small numbers and to protect privacy. Relevant graphs are also suppressed.
 † Data points are not shown in graphs for quarters when patient numbers were too small.
 ‡ Caution is advised when interpreting abrupt changes over time at the hospital level. For example, performance before and after transition to a new information system is not directly comparable. For more information see *Background Paper: Approaches to reporting time measures of emergency department performance, December 2011*.

- All emergency and non-emergency presentations at the emergency department (ED).
- All presentations that have a triage category and are coded as emergency presentations or unplanned return visits.
- Some patients are excluded from ED time measures due to calculation requirements. For details, see the *Technical Supplement: Emergency department measures, July to September 2016*.
- The median is the time by which half of patients started treatment. The other half of patients took equal to or longer than this time.
- The 90th percentile is the time by which 90% of patients started treatment. The final 10% of patients took equal to or longer than this time.
- All presentations that have a departure time.
- Transfer of care time refers to the period between arrival of patients at the ED by ambulance and the transfer of responsibility for their care from paramedics to ED staff in an ED treatment zone. For more information see *Spotlight on Measurement: measuring transfer of care from the ambulance to the emergency department*.
- The median is the time by which half of patients left the ED. The other half of patients took equal to or longer than this time.
- The 90th percentile is the time by which 90% of patients left the ED. The final 10% of patients took equal to or longer than this time.

Note: Presentation time is the earlier of times recorded for the start of clerical registration or the triage process.
 Treatment time is the earliest time recorded when a healthcare professional provides medical care that is relevant to the patient's presenting problems. For patients who were treated and discharged, departure time is the time when treatment was completed. For all other patients, departure time is the time when the patient actually left the ED.

Note: All percentages are rounded and therefore percentages may not add to 100%.

Sources: ED data from Health Information Exchange, NSW Health (extracted 23 January 2018).
 Transfer of care data from Transfer of Care Reporting System (extracted 23 January 2018).