

Bathurst Base Hospital: Emergency department (ED) overview

April to June 2017



All presentations:¹ 6,272 patients
Emergency presentations:² 6,203 patients

Same period last year	Change since one year ago
5,933	5.7%
5,864	5.8%



Bathurst Base Hospital: Time patients waited to start treatment³

April to June 2017

Triage 2 Emergency (e.g. chest pain, severe burns): 549 patients

Median time to start treatment⁴  7 minutes
90th percentile time to start treatment⁵  11 minutes

Triage 3 Urgent (e.g. moderate blood loss, dehydration): 2,049 patients

Median time to start treatment⁴  17 minutes
90th percentile time to start treatment⁵  48 minutes

Triage 4 Semi-urgent (e.g. sprained ankle, earache): 2,727 patients

Median time to start treatment⁴  17 minutes
90th percentile time to start treatment⁵  69 minutes

Triage 5 Non-urgent (e.g. small cuts or abrasions): 857 patients

Median time to start treatment⁴  15 minutes
90th percentile time to start treatment⁵  72 minutes

Same period last year	NSW (this period)
602	
7 minutes	8 minutes
9 minutes	26 minutes
1,723	
13 minutes	20 minutes
39 minutes	67 minutes
2,567	
16 minutes	25 minutes
72 minutes	99 minutes
955	
18 minutes	23 minutes
104 minutes	101 minutes

Bathurst Base Hospital: Time from presentation until leaving the ED

April to June 2017

Attendances used to calculate time to leaving the ED:⁶ 6,270 patients

Percentage of patients who spent four hours or less in the ED  78.3%

Same period last year	Change since one year ago
5,933	5.7%
75.6%	

* Suppressed due to small number of patients and to protect privacy. Relevant graphs are also suppressed.

- All emergency and non-emergency attendances at the emergency department (ED).
- All attendances that have a triage category and are coded as emergency presentations or unplanned return visits.
- Some patients are excluded from ED time measures due to calculation requirements. For details, see the *Technical Supplement: Emergency department measures, July to September 2016*.
- The median is the time by which half of patients started treatment. The other half of patients waited equal to or longer than this time.
- The 90th percentile is the time by which 90% of patients started treatment. The final 10% of patients waited equal to or longer than this time.
- All presentations that have a departure time.

Note: Presentation time is the earlier time recorded for clerical registration or the triage process. Treatment time is the earliest time recorded when a healthcare professional provides medical care relevant to the patient's presenting problems.

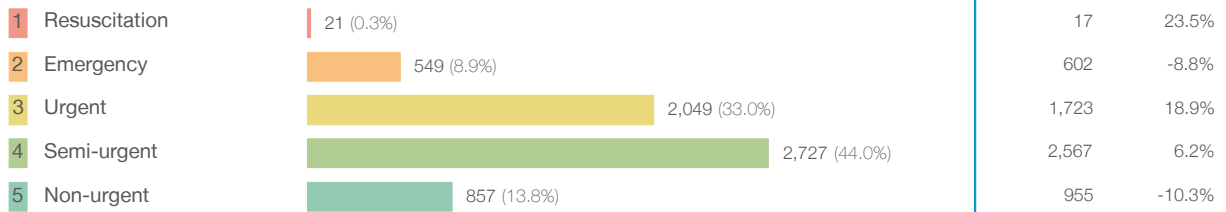
Source: Health Information Exchange, NSW Health (extracted 21 July 2017).

Bathurst Base Hospital: Patients presenting to the emergency department

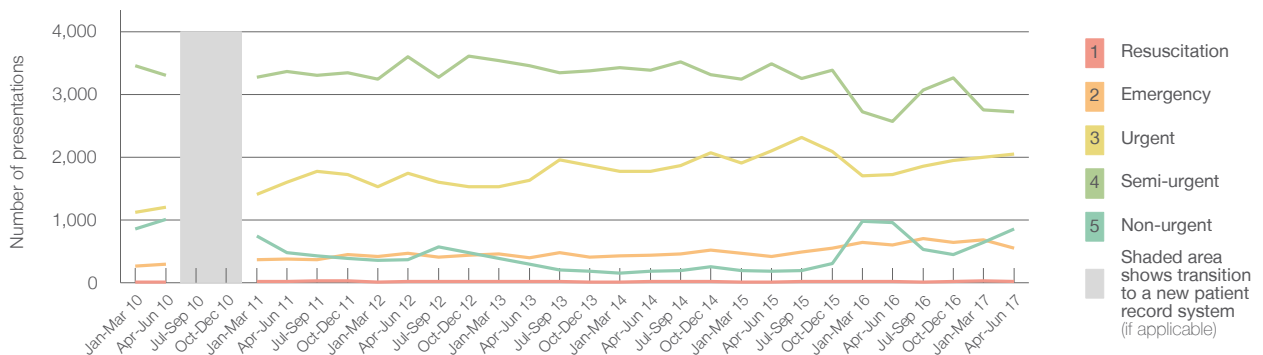
April to June 2017

All presentations:¹ 6,272 patients

Emergency presentations² by triage category: 6,203 patients



Emergency presentations² by quarter, April 2012 to June 2017 †



	Apr-Jun 2010	Apr-Jun 2011	Apr-Jun 2012	Apr-Jun 2013	Apr-Jun 2014	Apr-Jun 2015	Apr-Jun 2016	Apr-Jun 2017
Resuscitation	9	16	23	15	17	12	17	21
Emergency	298	371	468	401	440	420	602	549
Urgent	1,199	1,604	1,739	1,628	1,777	2,104	1,723	2,049
Semi-urgent	3,301	3,362	3,604	3,461	3,381	3,490	2,567	2,727
Non-urgent	1,013	483	362	290	180	186	955	857
All emergency presentations	5,820	5,836	6,196	5,795	5,795	6,212	5,864	6,203

Bathurst Base Hospital: Patients arriving by ambulance

April to June 2017

Arrivals used to calculate transfer of care time:⁷ 936 patients

ED Transfer of care time



(†) Data points are not shown in graphs for quarters when patient numbers are too small.

(‡) Caution is advised when interpreting abrupt changes over time at the hospital level. For example, performance before and after transition to a new information system is not directly comparable. For more information, see Background Paper: Approaches to reporting time measures of emergency department performance, December 2011.

Bathurst Base Hospital: Time patients waited to start treatment, triage 2

April to June 2017

Triage 2 Emergency (e.g. chest pain, severe burns)

Number of triage 2 patients: 549

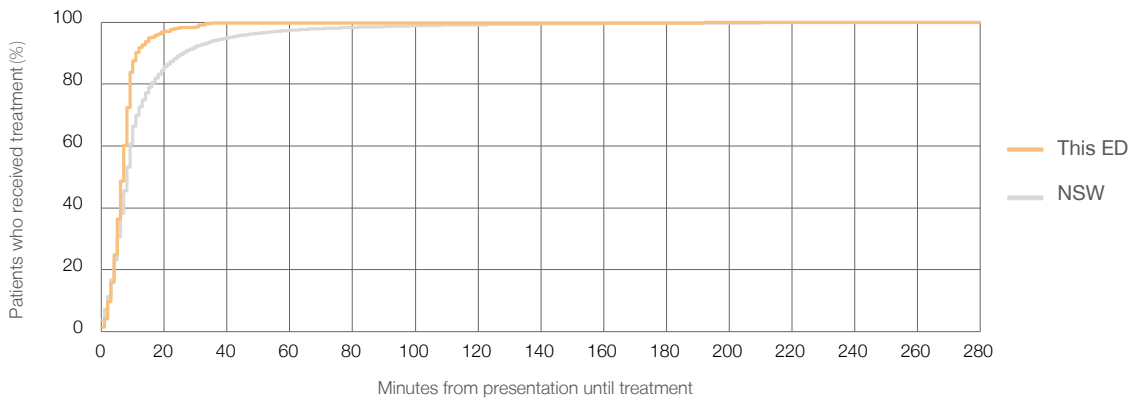
Number of triage 2 patients used to calculate waiting time:³ 549

Median time to start treatment⁴ 7 minutes

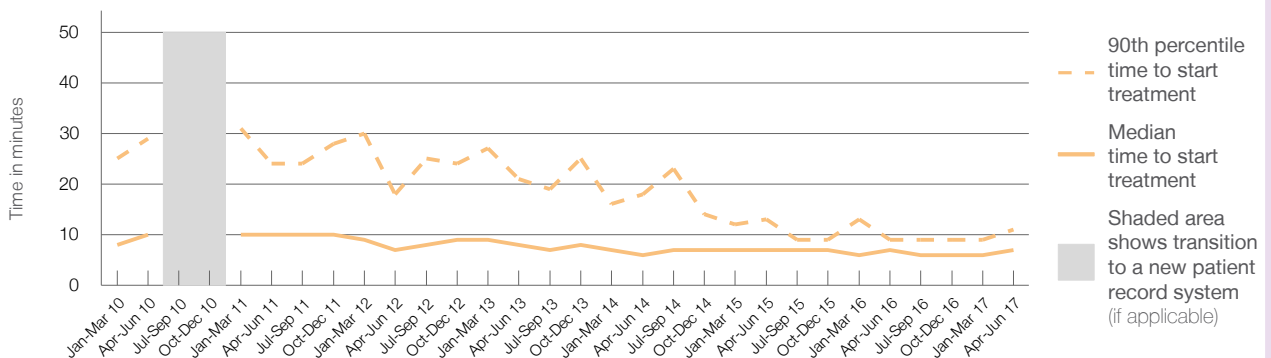
90th percentile time to start treatment⁵ 11 minutes

Same period last year	NSW (this period)
602	
600	
7 minutes	8 minutes
9 minutes	26 minutes

Percentage of triage 2 patients who received treatment by time, April to June 2017



Time patients waited to start treatment (minutes) for triage 2 patients, April 2012 to June 2017^{†‡}



	Apr-Jun 2010	Apr-Jun 2011	Apr-Jun 2012	Apr-Jun 2013	Apr-Jun 2014	Apr-Jun 2015	Apr-Jun 2016	Apr-Jun 2017
Median time to start treatment ⁴ (minutes)	10	10	7	8	6	7	7	7
90th percentile time to start treatment ⁵ (minutes)	29	24	18	21	18	13	9	11

(†) Data points are not shown in graphs for quarters when patient numbers are too small.

(‡) Caution is advised when interpreting abrupt changes over time at the hospital level. For example, performance before and after transition to a new information system is not directly comparable. For more information, see Background Paper: Approaches to reporting time measures of emergency department performance, December 2011.

Bathurst Base Hospital: Time patients waited to start treatment, triage 3 April to June 2017

Triage 3 Urgent (e.g. moderate blood loss, dehydration)

Number of triage 3 patients: 2,049

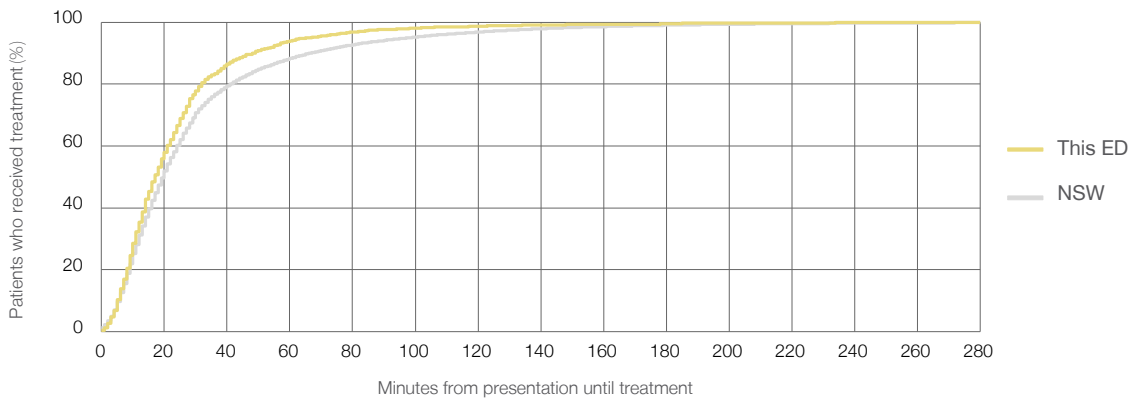
Number of triage 3 patients used to calculate waiting time:³ 2,033

Median time to start treatment⁴ 17 minutes

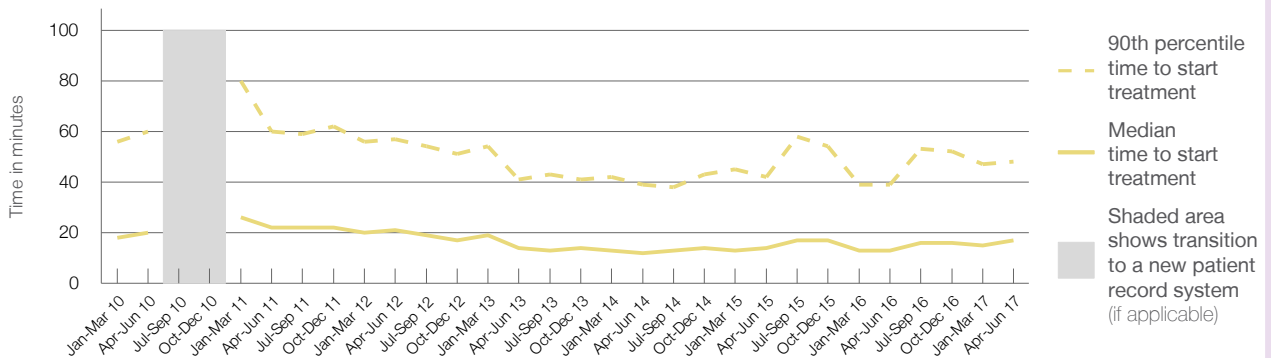
90th percentile time to start treatment⁵ 48 minutes

Same period last year	NSW (this period)
1,723	1,704
13 minutes	20 minutes
39 minutes	67 minutes

Percentage of triage 3 patients who received treatment by time, April to June 2017



Time patients waited to start treatment (minutes) for triage 3 patients, April 2012 to June 2017^{†‡}



	Apr-Jun 2010	Apr-Jun 2011	Apr-Jun 2012	Apr-Jun 2013	Apr-Jun 2014	Apr-Jun 2015	Apr-Jun 2016	Apr-Jun 2017
Median time to start treatment ⁴ (minutes)	20	22	21	14	12	14	13	17
90th percentile time to start treatment ⁵ (minutes)	60	60	57	41	39	42	39	48

(†) Data points are not shown in graphs for quarters when patient numbers are too small.

(‡) Caution is advised when interpreting abrupt changes over time at the hospital level. For example, performance before and after transition to a new information system is not directly comparable. For more information, see Background Paper: Approaches to reporting time measures of emergency department performance, December 2011.

Bathurst Base Hospital: Time patients waited to start treatment, triage 4 April to June 2017

Triage 4 Semi-urgent (e.g. sprained ankle, earache)

Number of triage 4 patients: 2,727

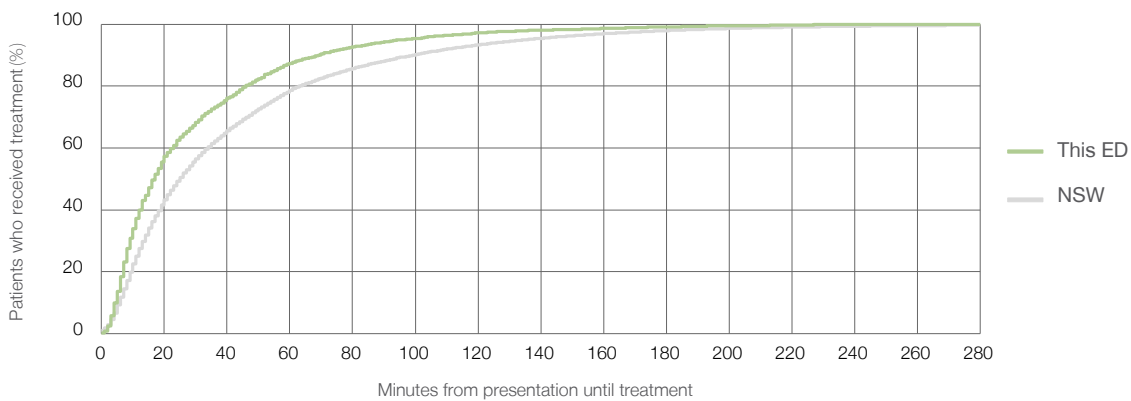
Number of triage 4 patients used to calculate waiting time:³ 2,641

Median time to start treatment⁴ 17 minutes

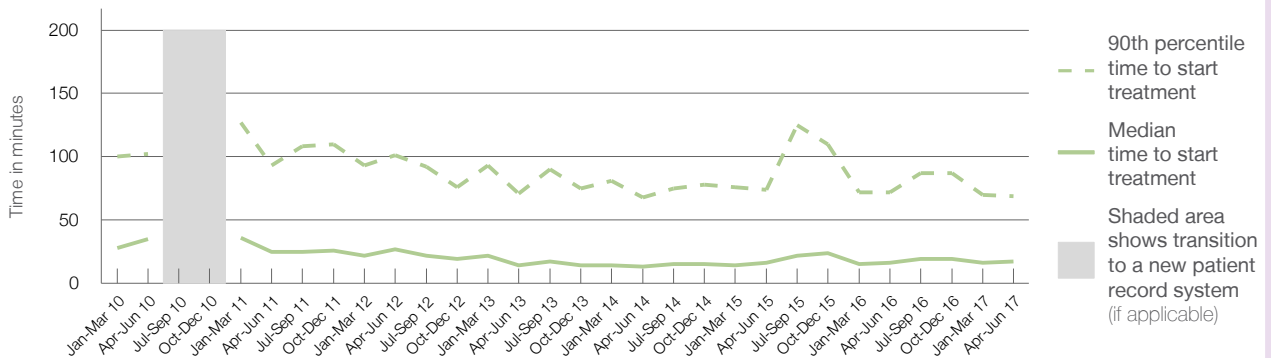
90th percentile time to start treatment⁵ 69 minutes

Same period last year	NSW (this period)
2,567	
2,479	
16 minutes	25 minutes
72 minutes	99 minutes

Percentage of triage 4 patients who received treatment by time, April to June 2017



Time patients waited to start treatment (minutes) for triage 4 patients, April 2012 to June 2017^{†‡}



	Apr-Jun 2010	Apr-Jun 2011	Apr-Jun 2012	Apr-Jun 2013	Apr-Jun 2014	Apr-Jun 2015	Apr-Jun 2016	Apr-Jun 2017
Median time to start treatment ⁴ (minutes)	35	25	27	14	13	16	16	17
90th percentile time to start treatment ⁵ (minutes)	102	93	101	71	68	74	72	69

(†) Data points are not shown in graphs for quarters when patient numbers are too small.

(‡) Caution is advised when interpreting abrupt changes over time at the hospital level. For example, performance before and after transition to a new information system is not directly comparable. For more information, see Background Paper: Approaches to reporting time measures of emergency department performance, December 2011.

Bathurst Base Hospital: Time patients waited to start treatment, triage 5

April to June 2017

Triage 5 Non-urgent (e.g. small cuts or abrasions)

Number of triage 5 patients: 857

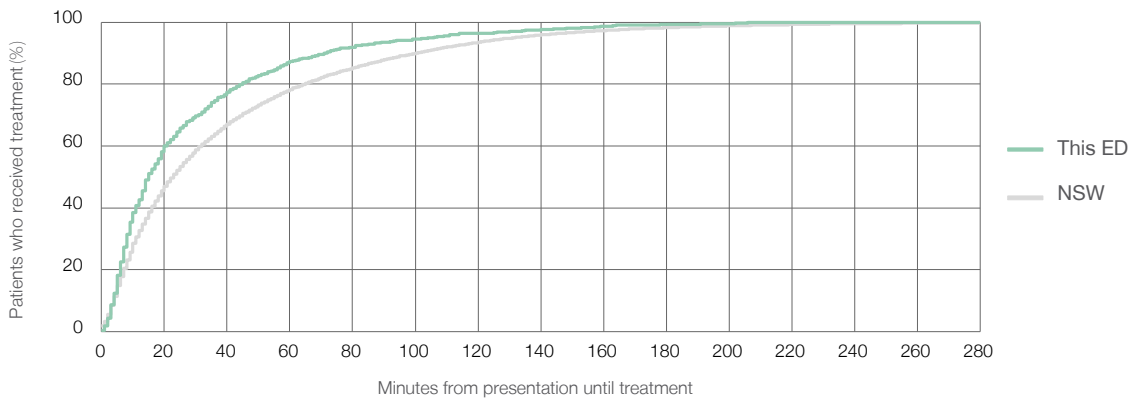
Number of triage 5 patients used to calculate waiting time:³ 792

Median time to start treatment⁴ 15 minutes

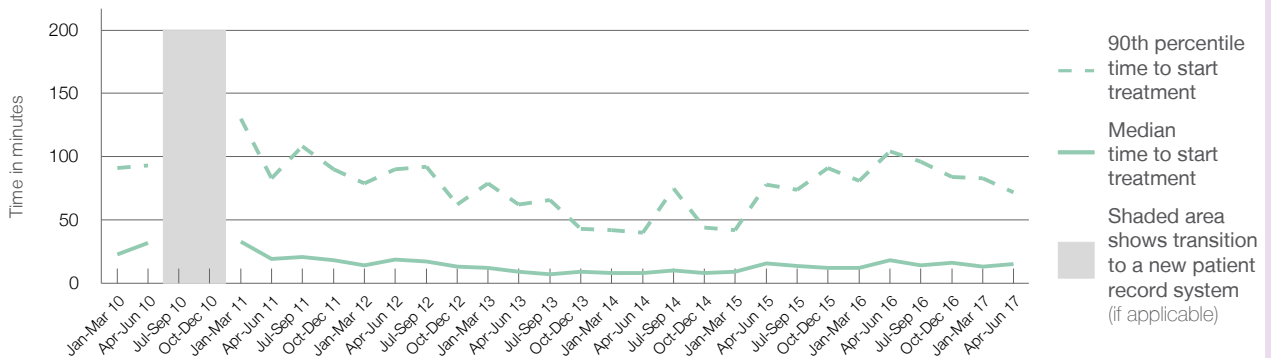
90th percentile time to start treatment⁵ 72 minutes

Same period last year	NSW (this period)
955	
852	
18 minutes	23 minutes
104 minutes	101 minutes

Percentage of triage 5 patients who received treatment by time, April to June 2017



Time patients waited to start treatment (minutes) for triage 5 patients, April 2012 to June 2017^{†‡}



	Apr-Jun 2010	Apr-Jun 2011	Apr-Jun 2012	Apr-Jun 2013	Apr-Jun 2014	Apr-Jun 2015	Apr-Jun 2016	Apr-Jun 2017
Median time to start treatment ⁴ (minutes)	32	19	19	9	8	16	18	15
90th percentile time to start treatment ⁵ (minutes)	93	83	90	62	40	78	104	72

(†) Data points are not shown in graphs for quarters when patient numbers are too small.

(‡) Caution is advised when interpreting abrupt changes over time at the hospital level. For example, performance before and after transition to a new information system is not directly comparable. For more information, see Background Paper: Approaches to reporting time measures of emergency department performance, December 2011.

Bathurst Base Hospital: Time patients spent in the ED

April to June 2017

All presentations:¹ 6,272 patients

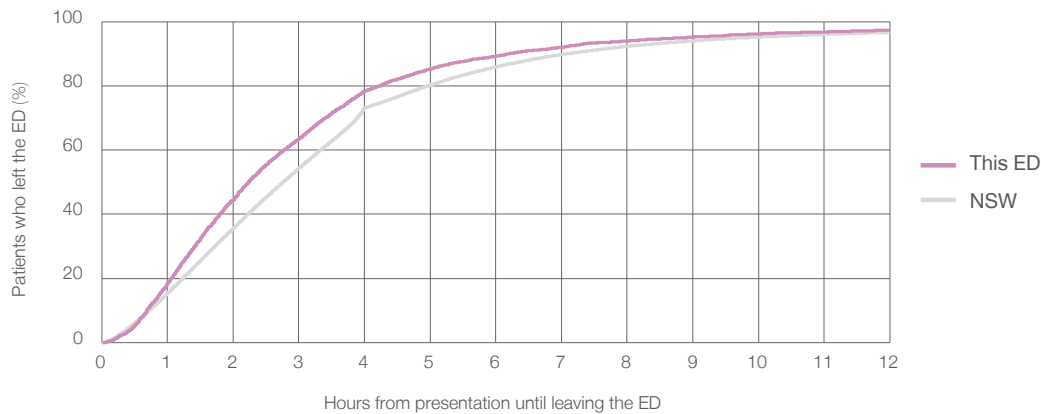
Presentations used to calculate time to leaving the ED:⁶ 6,270 patients

Median time spent in the ED⁸ 2 hours and 14 minutes

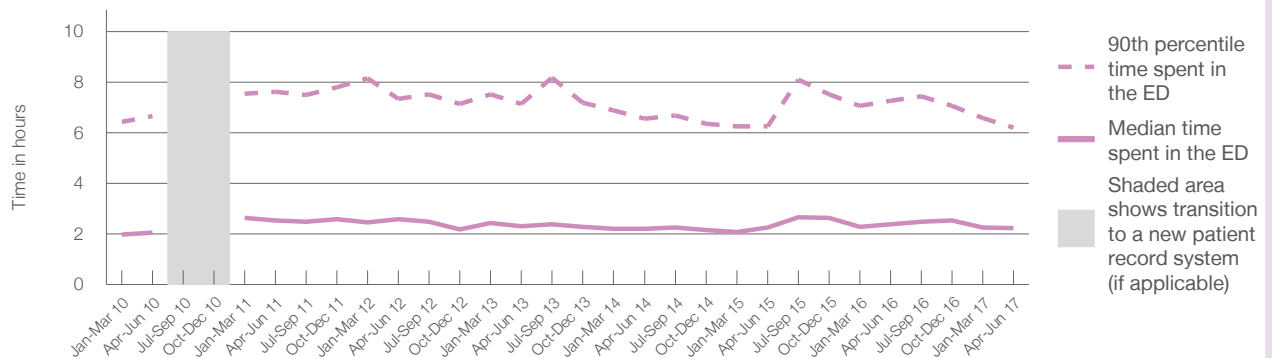
90th percentile time spent in the ED⁹ 6 hours and 12 minutes

Same period last year	NSW (this period)
5,933	5,933
2 hours and 24 minutes	2 hours and 46 minutes
7 hours and 16 minutes	7 hours and 5 minutes

Percentage of patients who left the ED by time, April to June 2017



Time patients spent in the ED, by quarter, April 2012 to June 2017^{†‡}



	Apr-Jun 2010	Apr-Jun 2011	Apr-Jun 2012	Apr-Jun 2013	Apr-Jun 2014	Apr-Jun 2015	Apr-Jun 2016	Apr-Jun 2017
Median time to leaving the ED ⁸ (hours, minutes)	2h 3m	2h 32m	2h 35m	2h 18m	2h 12m	2h 16m	2h 24m	2h 14m
90th percentile time to leaving the ED ⁹ (hours, minutes)	6h 39m	7h 38m	7h 20m	7h 9m	6h 33m	6h 16m	7h 16m	6h 12m

(†) Data points are not shown in graphs for quarters when patient numbers are too small.

(‡) Caution is advised when interpreting abrupt changes over time at the hospital level. For example, performance before and after transition to a new information system is not directly comparable. For more information, see Background Paper: Approaches to reporting time measures of emergency department performance, December 2011.

Bathurst Base Hospital: Time patients spent in the ED
By mode of separation
April to June 2017

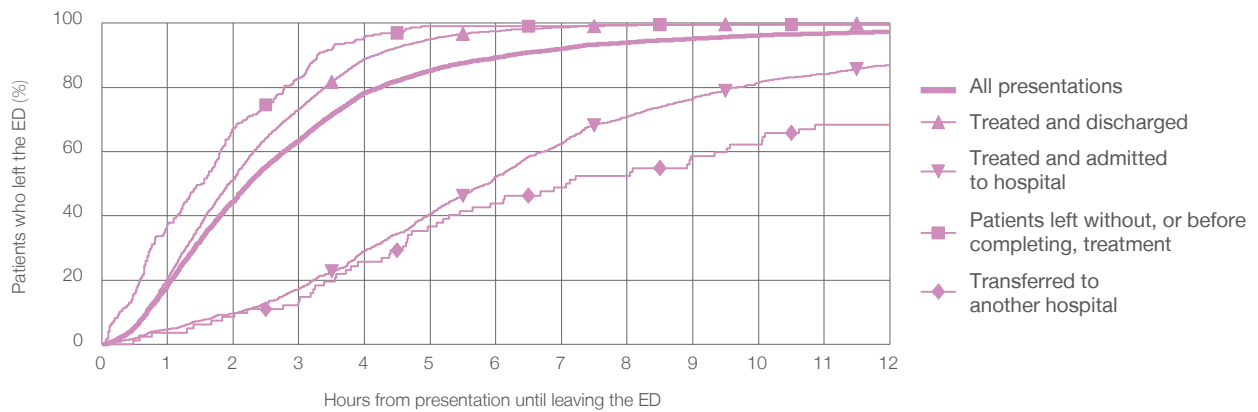
All presentations:¹ 6,272 patients

Presentations used to calculate time to leaving the ED:⁶ 6,270 patients

Treated and discharged	4,885 (77.9%)
Treated and admitted to hospital	1,048 (16.7%)
Patient left without, or before completing, treatment	232 (3.7%)
Transferred to another hospital	82 (1.3%)
Other	25 (0.4%)

Same period last year	Change since one year ago
5,933	5.7%
4,383	11.5%
1,195	-12.3%
250	-7.2%
88	-6.8%
17	47.1%

Percentage of patients who left the ED by time and mode of separation, April to June 2017^{††}



1 hour 2 hours 3 hours 4 hours 6 hours 8 hours 10 hours 12 hours

Treated and discharged	20.6%	51.3%	73.2%	88.9%	97.5%	99.3%	99.8%	99.9%
Treated and admitted to hospital	4.6%	9.5%	17.2%	29.1%	52.3%	70.8%	81.4%	87.2%
Patient left without, or before completing, treatment	37.5%	67.2%	82.8%	95.7%	99.1%	99.6%	99.6%	99.6%
Transferred to another hospital	3.7%	8.5%	13.4%	25.6%	43.9%	52.4%	62.2%	68.3%
All presentations	18.5%	44.4%	63.5%	78.3%	89.3%	94.0%	96.2%	97.3%

(†) Data points are not shown in graphs for quarters when patient numbers are too small.

(‡) Caution is advised when interpreting abrupt changes over time at the hospital level. For example, performance before and after transition to a new information system is not directly comparable. For more information, see Background Paper: Approaches to reporting time measures of emergency department performance, December 2011.

Bathurst Base Hospital: Time spent in the ED
 Percentage of patients who spent four hours or less in the ED
 April to June 2017

All presentations at the emergency department:¹ 6,272 patients

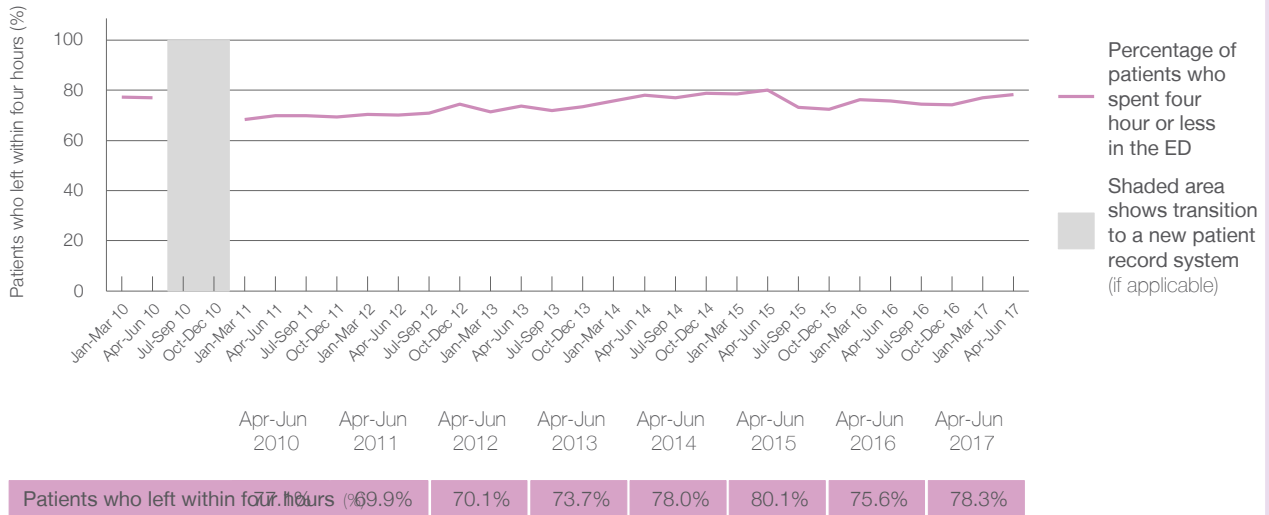
Presentations used to calculate time to leaving the ED:⁶ 6,270 patients

Percentage of patients who spent four hours or less in the ED



	Same period last year	Change since one year ago
All presentations at the emergency department: ¹ 6,272 patients	5,933	5.7%
Presentations used to calculate time to leaving the ED: ⁶ 6,270 patients	5,933	5.7%
Percentage of patients who spent four hours or less in the ED	75.6%	

Percentage of patients who spent four hours or less in the ED, by quarter, April 2012 to June 2017^{†‡}



* Suppressed due to small numbers and to protect privacy. Relevant graphs are also suppressed.

† Data points are not shown in graphs for quarters when patient numbers were too small.

‡ Caution is advised when interpreting abrupt changes over time at the hospital level. For example, performance before and after transition to a new information system is not directly comparable. For more information see *Background Paper: Approaches to reporting time measures of emergency department performance, December 2011*.

- All emergency and non-emergency presentations at the emergency department (ED).
- All presentations that have a triage category and are coded as emergency presentations or unplanned return visits.
- Some patients are excluded from ED time measures due to calculation requirements. For details, see the *Technical Supplement: Emergency department measures, July to September 2016*.
- The median is the time by which half of patients started treatment. The other half of patients took equal to or longer than this time.
- The 90th percentile is the time by which 90% of patients started treatment. The final 10% of patients took equal to or longer than this time.
- All presentations that have a departure time.
- Transfer of care time refers to the period between arrival of patients at the ED by ambulance and the transfer of responsibility for their care from paramedics to ED staff in an ED treatment zone. For more information see *Spotlight on Measurement: measuring transfer of care from the ambulance to the emergency department*.
- The median is the time by which half of patients left the ED. The other half of patients took equal to or longer than this time.
- The 90th percentile is the time by which 90% of patients left the ED. The final 10% of patients took equal to or longer than this time.

Note: Presentation time is the earlier of times recorded for the start of clerical registration or the triage process. Treatment time is the earliest time recorded when a healthcare professional provides medical care that is relevant to the patient's presenting problems. For patients who were treated and discharged, departure time is the time when treatment was completed. For all other patients, departure time is the time when the patient actually left the ED.

Note: All percentages are rounded and therefore percentages may not add to 100%.

Sources: ED data from Health Information Exchange, NSW Health (extracted 21 July 2017).
 Transfer of care data from Transfer of Care Reporting System (extracted 21 July 2017).