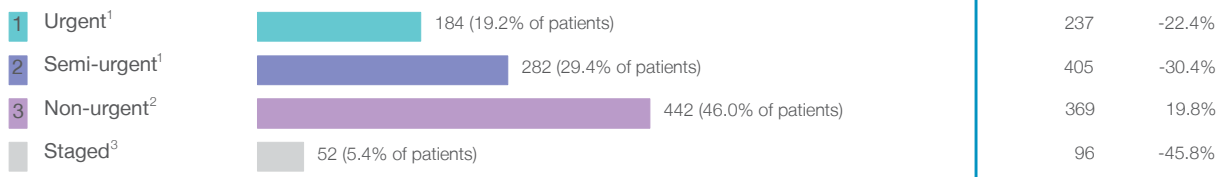


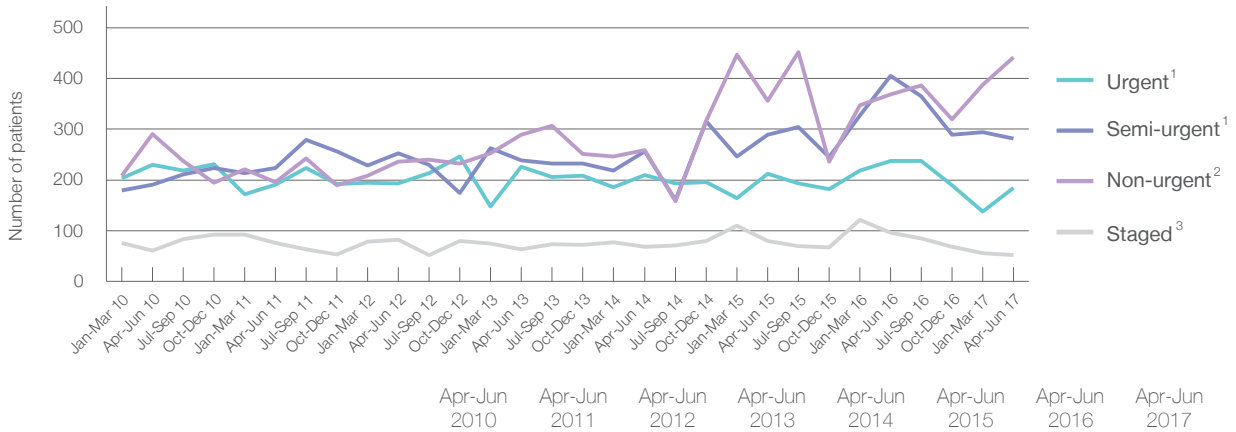
Port Macquarie Base Hospital: Elective surgery performed

April to June 2017

Patients who received elective surgery by urgency category: 960 patients



Patients who received elective surgery by urgency category by quarter, April 2012 to June 2017



	Apr-Jun 2010	Apr-Jun 2011	Apr-Jun 2012	Apr-Jun 2013	Apr-Jun 2014	Apr-Jun 2015	Apr-Jun 2016	Apr-Jun 2017
All categories	772	686	764	817	793	937	1,107	960
Urgent ¹	230	191	193	226	210	212	237	184
Semi-urgent ¹	191	223	253	239	256	289	405	282
Non-urgent ²	290	196	236	289	259	356	369	442
Staged ³	61	76	82	63	68	80	96	52

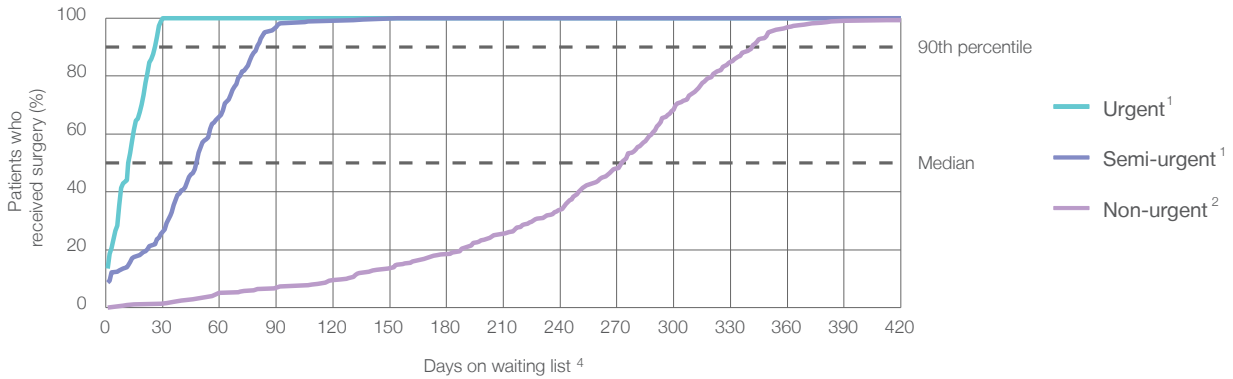
Port Macquarie Base Hospital: Time waited to receive elective surgery

April to June 2017

Percentage of patients who received surgery within the clinically recommended timeframe

	Recommended: (days)	Percentage	Same period last year	Peer group (this period)
1 Urgent ¹	30 days	100%	100%	99.9%
2 Semi-urgent ¹	90 days	96.8%	98.3%	97.8%
3 Non-urgent ²	365 days	97.3%	98.6%	95.9%

Percentage of patients who received elective surgery by waiting time (days)



Waiting time (days) for people who received surgery by urgency category

Urgency Category	Median time to receive surgery	90th percentile time to receive surgery	Peer group (this period)	This hospital (same period last year)	Peer group (same period last year)
1 Urgent: ¹ 184 patients	13 days	26 days	14	13	13
2 Semi-urgent: ¹ 282 patients	48 days	80 days	49	56	50
3 Non-urgent: ² 442 patients	273 days	342 days	267	291	276

Port Macquarie Base Hospital: Time waited to receive elective surgery

April to June 2017

Median ⁵ waiting time (days) for patients who received elective surgery by specialty of surgeon		Same period last year	Peer group (this period)
Cardiothoracic surgery	n/a (0 patients)	n/a	*
Ear, nose and throat surgery	171 days (40 patients)	198	247
General surgery	43 days (187 patients)	29	53
Gynaecology	39 days (122 patients)	40	48
Medical	* (5 patients)	*	23
Neurosurgery	n/a (0 patients)	n/a	n/a
Ophthalmology	188 days (80 patients)	283	258
Orthopaedic surgery	276 days (247 patients)	268	215
Plastic surgery	n/a (0 patients)	n/a	83
Urology	63 days (197 patients)	60	40
Vascular surgery	13 days (82 patients)	27	21

Median ⁵ waiting time (days) for patients who received elective surgery by common procedures ⁷		Same period last year	Peer group (this period)
Abdominal hysterectomy	72 days (12 patients)	*	81
Cataract extraction	186 days (54 patients)	290	276
Cholecystectomy	47 days (28 patients)	58	59
Coronary artery bypass graft	n/a (0 patients)	n/a	n/a
Cystoscopy	40 days (53 patients)	62	30
Haemorrhoidectomy	* (< 5 patients)	*	64
Hysteroscopy	19 days (29 patients)	28	35
Inguinal herniorrhaphy	254 days (26 patients)	267	118
Myringoplasty / Tympanoplasty	* (< 5 patients)	*	307
Myringotomy	n/a (0 patients)	n/a	24
Other - General	32 days (11 patients)	*	29
Prostatectomy	84 days (36 patients)	74	70
Septoplasty	* (< 5 patients)	n/a	316
Tonsillectomy	272 days (11 patients)	218	272
Total hip replacement	289 days (43 patients)	296	266
Total knee replacement	287 days (82 patients)	321	301
Varicose veins stripping and ligation	n/a (0 patients)	294	131

Port Macquarie Base Hospital: Elective surgery waiting list

April to June 2017

Patients ready for surgery on waiting list at start of quarter: 1,266 patients

Patients ready for surgery on waiting list at end of quarter: 1,213 patients

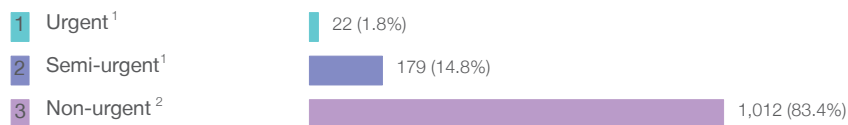
Patients not ready for surgery⁸ on waiting list at end of quarter: 354 patients

	Same period last year	Change since one year ago
Patients ready for surgery on waiting list at start of quarter	1,357	-6.7%
Patients ready for surgery on waiting list at end of quarter	1,430	-15.2%
Patients not ready for surgery ⁸ on waiting list at end of quarter	272	30.1%

Port Macquarie Base Hospital: Patients ready for elective surgery

as at 30th June 2017

Patients ready for surgery on waiting list by urgency category: 1,213 patients



	Same period last year	Change since one year ago
Urgent ¹	34	-35.3%
Semi-urgent ¹	175	2.3%
Non-urgent ²	1,221	-17.1%

Port Macquarie Base Hospital: Patients ready for elective surgery

as at 30th June 2017

Patients ready for elective surgery by specialty of surgeon: 1,213 patients

	As at 30 Jun 2017	Same time last year	Change since one year ago
All specialties	1,213	1,430	-15.2%
Cardiothoracic surgery	0	0	n/a
Ear, nose and throat surgery	27	89	-69.7%
General surgery	153	209	-26.8%
Gynaecology	122	125	-2.4%
Medical	< 5	< 5	*
Neurosurgery	0	0	n/a
Ophthalmology	119	217	-45.2%
Orthopaedic surgery	625	616	1.5%
Plastic surgery	0	0	n/a
Urology	148	139	6.5%
Vascular surgery	15	31	-51.6%

Patients ready for elective surgery for common procedures⁷

	As at 30 Jun 2017	Same time last year	Change since one year ago
Abdominal hysterectomy	17	18	-5.6%
Cataract extraction	63	186	-66.1%
Cholecystectomy	25	27	-7.4%
Coronary artery bypass graft	0	< 5	n/a
Cystoscopy	21	17	23.5%
Haemorrhoidectomy	0	8	-100.0%
Hysteroscopy	16	14	14.3%
Inguinal herniorrhaphy	37	47	-21.3%
Myringoplasty / Tympanoplasty	0	< 5	*
Myringotomy	0	< 5	n/a
Other - General	8	< 5	*
Prostatectomy	48	40	20.0%
Septoplasty	< 5	7	*
Tonsillectomy	14	63	-77.8%
Total hip replacement	133	97	37.1%
Total knee replacement	234	228	2.6%
Varicose veins stripping and ligation	0	6	-100.0%

Port Macquarie Base Hospital: Patients ready for elective surgery as at 30th June 2017

Patients ready for elective surgery, on the waiting list for longer than 12 months

As at 30 Jun 2017

Same time last year

All specialties	0	< 5
-----------------	---	-----

* Suppressed due to small numbers and to protect privacy. Relevant graphs are also suppressed.

< 5 Less than five patients. For measures by urgency category, counts are included in an adjacent category. Relevant graphs are also suppressed.

1. Excluding staged procedures.
2. Excluding staged procedures and cystoscopy.
3. Including non-urgent cystoscopy.
4. Excludes the total number of days the patient was coded as 'not ready for surgery'.
5. This is the number of days it took for half of patients who received elective surgery during the period to be admitted and receive their surgery. The other half took equal to or longer than the median to be admitted for surgery.
6. This is the number of days it took for 90% of patients who received elective surgery during the period to be admitted and receive their surgery. The final 10% of patients took equal to or longer than the 90th percentile.
7. The procedures included in this list are procedures which are high volume; some may be associated with long waiting periods. For a description of these procedures see *Elective Surgery Glossary of Common Procedures, December 2012*.
8. Includes staged procedures, non-urgent cystoscopy, and patients currently not available for personal reasons.

For more information: For details of methods, see the *Technical Supplement: Elective surgery measures, July to September 2016*.

Note: All percentages rounded to whole numbers and therefore percentages may not add to 100%.

Source: Waiting List Collection On-Line System, NSW Health (extracted 18 July 2017.).