

# Elective Surgery

## Hospital Quarterly:

Performance of  
NSW public hospitals

**April to June 2011**

Elective, or planned, surgery is surgery that a patient's doctor considers necessary but that can be delayed by at least 24 hours. Hip replacement, cataract extraction and ligament repairs are examples of elective surgery.

Compared with the same time one year ago, less surgery was performed in the urgent and non-urgent categories (both down 3%), although semi-urgent surgery increased by 2%. Staged surgery decreased by 9% from the same quarter last year although this group is small, making up 7% of all completed surgical procedures.

Most patients (92%) continued to receive their surgery on time, up compared with the same quarter last year (87%). The percentage of

patients seen on time increased for all urgency categories when compared with the same quarter in 2010 but was largest for the non-urgent group, up seven percentage points to 92%.

The median\* waiting times had changed little since the same quarter in 2010 for patients needing urgent and semi-urgent surgical procedures (11 and 48 days respectively). The waiting time for non-urgent procedures was 221 days, down by 10 days when compared with the same quarter last year.

This is one of three *Hospital Quarterly* modules. For the Emergency Departments and Admitted Patients modules visit [www.bhi.nsw.gov.au](http://www.bhi.nsw.gov.au)

Find out how **your local hospital**

**PERFORMS**

Results for more than  
80 NSW hospitals  
available at

[www.bhi.nsw.gov.au](http://www.bhi.nsw.gov.au)

| From April to June 2011 ...   | For the same period last year ... | The difference ...          |
|---|-----------------------------------|-----------------------------|
| 52,089 elective surgical procedures were performed                  | 53,064 procedures                 | -975 (-2%)                  |
| 3,872 of these procedures were 'staged procedures'                  | 4,246 procedures                  | -374 (-9%)                  |
| The percentage of elective surgery patients treated on time was 92% | 87%                               | 5 percentage point increase |
| The percentage of urgent procedures treated on time was 93%         | 91%                               | 2 percentage point increase |
| The percentage of semi-urgent procedures treated on time was 91%    | 86%                               | 5 percentage point increase |
| The percentage of non-urgent procedures treated on time was 92%     | 85%                               | 7 percentage point increase |
| The median* waiting time for non-urgent surgery was 221 days        | 231 days                          | -10 days (-4%)              |

\* Median waiting time: time for half of all patients to receive treatment. Excludes staged procedures and non-urgent cystoscopy.

# Understanding elective surgery reporting

If a person and their surgeon believe surgery is required but can be delayed by at least 24 hours, the patient is 'referred' for their procedure and placed on a waiting list.

At the time of referral, a patient's surgeon assigns them to one of three urgency categories. Each category has its own target, which specifies the desired maximum time (in days) the patient should wait for their procedure. These are outlined in the box below:

| Urgency categories:<br>Elective surgery guidelines |   |
|--|---|
| <b>Category 1</b><br>Urgent                        | Admission <b>within 30 days</b> desirable for a condition that has the potential to deteriorate quickly and become an emergency |
| <b>Category 2</b><br>Semi-urgent                   | Admission <b>within 90 days</b> desirable for a condition not likely to deteriorate quickly                                     |
| <b>Category 3</b><br>Non-urgent                    | Admission <b>within 365 days</b> acceptable for a condition unlikely to deteriorate quickly                                     |

## Explaining staged procedures

There are times when surgery is deemed necessary but should not, or cannot, take place until a clinically appropriate time interval has passed. This is called staged surgery and is an essential concept in managing elective surgery. It allows surgeons to place patients on the surgery booking system but prevents them from being admitted to hospital before it is clinically appropriate.

Surgeons use clinical judgement to decide whether a procedure should be categorised as staged or not.

Examples of staged procedures include: waiting for a broken bone to heal before removing pins or plates; the time needed for hormone therapy to work before egg harvesting takes place during in-vitro fertilisation (IVF); and certain invasive diagnostic procedures (such as cystoscopy) that sometimes need to be conducted at set intervals.

## Differences across hospitals

Because patients cannot, or should not, have their staged procedure before the prescribed date, they are not considered to be 'waiting for care' unless they wait beyond that date. For this reason, the Bureau has excluded staged procedures from on-time surgery performance and median waiting time in this report.

In addition, there are differences in how hospitals manage cystoscopy procedures in the booking systems. Because including these patients may result in unfair or inequitable comparisons, the Bureau also excludes all non-urgent cystoscopy procedures from performance measures.

The Bureau is committed to providing clarity on surgical waiting times in NSW. Further detail on our methodology can be found in the addendum *Technical Supplement: Elective surgery measures, January to March 2011* available on the Bureau's website at [www.bhi.nsw.gov.au](http://www.bhi.nsw.gov.au)

See the **Appendices** section of this report (**pages 8 to 19**) for more detailed performance information about each public hospital providing elective surgery in NSW. This includes Hawkesbury Private Hospital, which is contracted to supply surgery for public patients.

# Number of elective surgery procedures performed

During April to June 2011, the Waiting List Collection On-line System (WLCOS) recorded that 52,089 elective surgery procedures were completed in NSW public hospitals or facilities contracted by NSW hospitals. This is 12% higher than the 46,493 conducted in the previous quarter (in line with the usual seasonal pattern) but down 2% from the 53,064 surgical procedures completed in the same quarter last year (Figure 1).

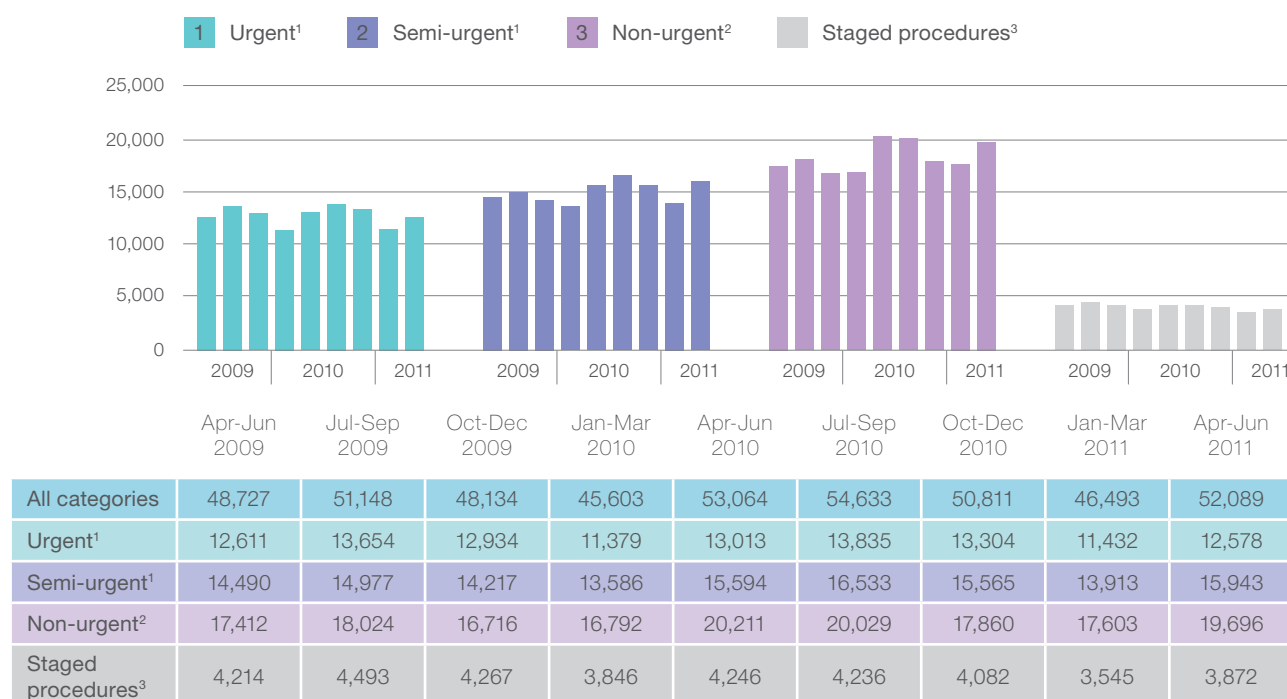
Each year, there is a strong seasonal effect on the number of elective surgery procedures performed in NSW. The number of procedures

falls sharply across all urgency categories in December and, to a greater extent, January, and peaks during the July to September quarter.

The results presented in this section and in Figure 1 exclude staged patients and non-urgent cystoscopy, unless otherwise stated.

**Urgent surgery (category 1):** There were 12,578 procedures completed, compared with 13,013 at the same time in 2010 (down 3%). Urgent procedures made up 24% of all completed elective surgery in WLCOS.

Figure 1: Total number of elective surgery procedures conducted, by urgency category, April 2009 to June 2011



1. Excluding staged procedures.
2. Excluding staged procedures and non-urgent cystoscopy.
3. Including non-urgent cystoscopy.

**Note:** Because of changes in methods and reporting, numbers of surgical procedures by urgency category will differ from those reported in previous NSW Department of Health's *Quarterly Hospital Performance Reports* and Bureau *Hospital Quarterly* reports published prior to May 2011.

**Source:** Waiting List Collection On-line System, NSW Health. Data extracted for the April to June 2011 quarter on 18 July 2011. Data extracted for all previous quarters on 15 July 2011.

**Semi-urgent surgery (category 2):** There were 15,943 semi-urgent procedures completed, compared with 15,594 in the same quarter of 2010 (an increase of 2%). Semi-urgent procedures made up 31% of all completed elective surgery.

**Non-urgent surgery (category 3):** There were 19,696 procedures completed, compared with 20,211 in 2010 (a decrease of 3%). Non-urgent procedures made up 38% of all completed elective surgery.

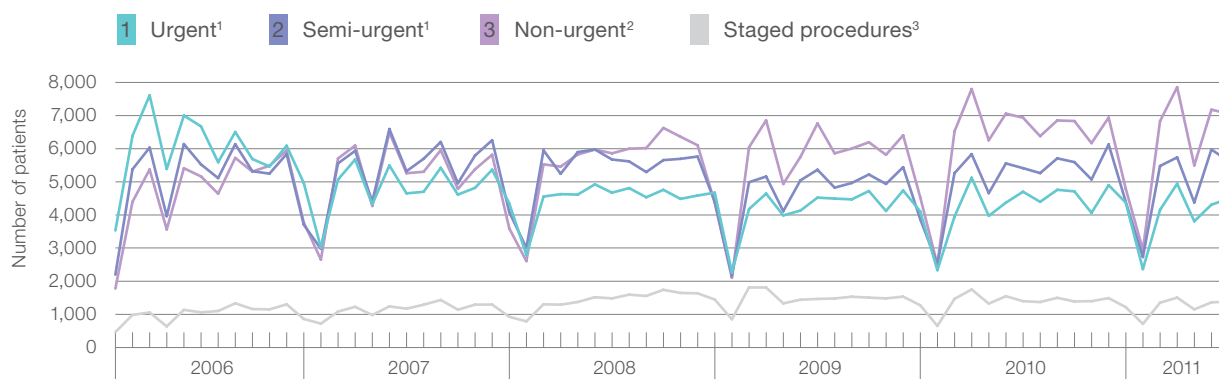
**Staged surgery:** There were 3,872 procedures, compared with 4,246 in 2010 (a decrease of 9%). Staged procedures made up 7% of all completed elective surgery.

The composition of surgical procedures completed by urgency category has changed greatly over the past five years (Figure 2). Most of this shift in surgical composition occurred during 2008 and early 2009.

Comparing the proportion that each surgical category makes up of all completed procedures, urgent surgery has decreased from comprising 36% of all surgical procedures in May 2006 to 23% in May 2011 (a decrease of 38% in the number of completed urgent procedures).

Over the same period, non-urgent procedures have increased from 27% of all surgical procedures to 38% (an increase of 33% in the number of completed non-urgent procedures) and staged procedures have increased from 6% to 7% (a 20% increase in the number of staged procedures).

Figure 2: Patients who received elective surgery, by urgency category, by month, January 2006 to June 2011



1. Excluding staged procedures.
2. Excluding staged procedures and non-urgent cystoscopy.
3. Including non-urgent cystoscopy.

**Note:** Because of changes in methods and reporting, numbers of surgical procedures by urgency category will differ from those reported in previous NSW Department of Health's *Quarterly Hospital Performance Reports* and Bureau *Hospital Quarterly* reports published prior to May 2011.

**Source:** Waiting List Collection On-line System, NSW Health. Data extracted for the April to June 2011 quarter on 18 July 2011. Data extracted for all previous quarters on 15 July 2011.

# Patients admitted on time for elective surgery

In the April to June 2011 quarter, 92% of all patients who were admitted to a public hospital for elective surgery were admitted within the time frame recommended by their surgeon (Figure 3), slightly higher than the preceding quarter (90%). A much larger increase is evident when comparing this quarter with the same quarter in 2010, up five percentage points from 87%.

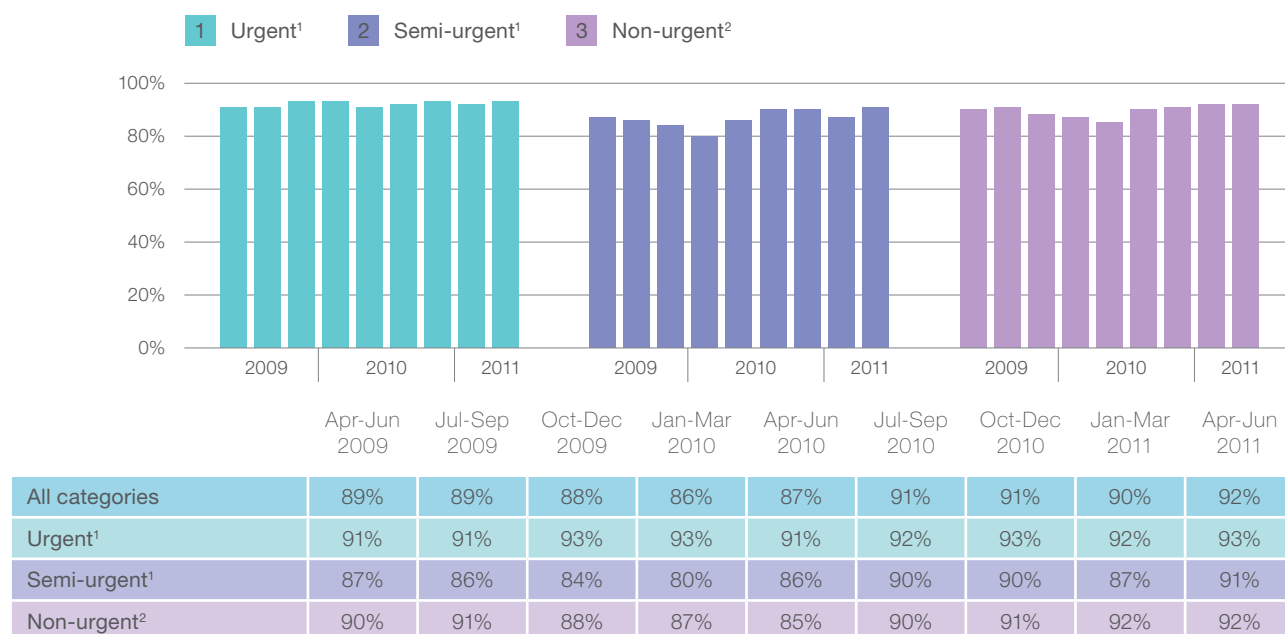
Figure 3 presents the percentage of patients in each surgical category who received their surgery on time for the most recent nine quarters. These results exclude staged patients and non-urgent cystoscopy procedures.

**Urgent surgery:** 93% of patients were admitted within the recommended 30 days, a result largely unchanged over the past two years.

**Semi-urgent surgery:** 91% of patients were admitted within 90 days. This is higher than the preceding quarter (87%), and the April to June quarter in 2010 (86%) and 2009 (87%).

**Non-urgent surgery:** 92% of patients were admitted within 365 days, similar to the last quarter (92%) and the same quarter in 2009 (90%), but considerably higher than the 2010 quarter (85%).

Figure 3: Percentage of elective surgery patients treated within recommended waiting time, by urgency category, April 2009 to June 2011



1. Excluding staged procedures.

2. Excluding staged procedures and non-urgent cystoscopy.

**Note:** Because of changes in methods and reporting, numbers of surgical procedures by urgency category will differ from those reported in previous NSW Department of Health's *Quarterly Hospital Performance Reports* and Bureau *Hospital Quarterly* reports published prior to May 2011.

**Source:** Waiting List Collection On-line System, NSW Health. Data extracted for the April to June 2011 quarter on 18 July 2011. Data extracted for all previous quarters on 15 July 2011.

# Median waiting times for elective surgery

Median wait time is the number of days it took for half the patients admitted for surgery during April to June 2011 to receive their surgery. The other half took longer than the median.

Figure 4 presents the median waiting time to be admitted for surgery for the current quarter and the eight quarters prior to this. These results exclude staged patients and non-urgent cystoscopy procedures.

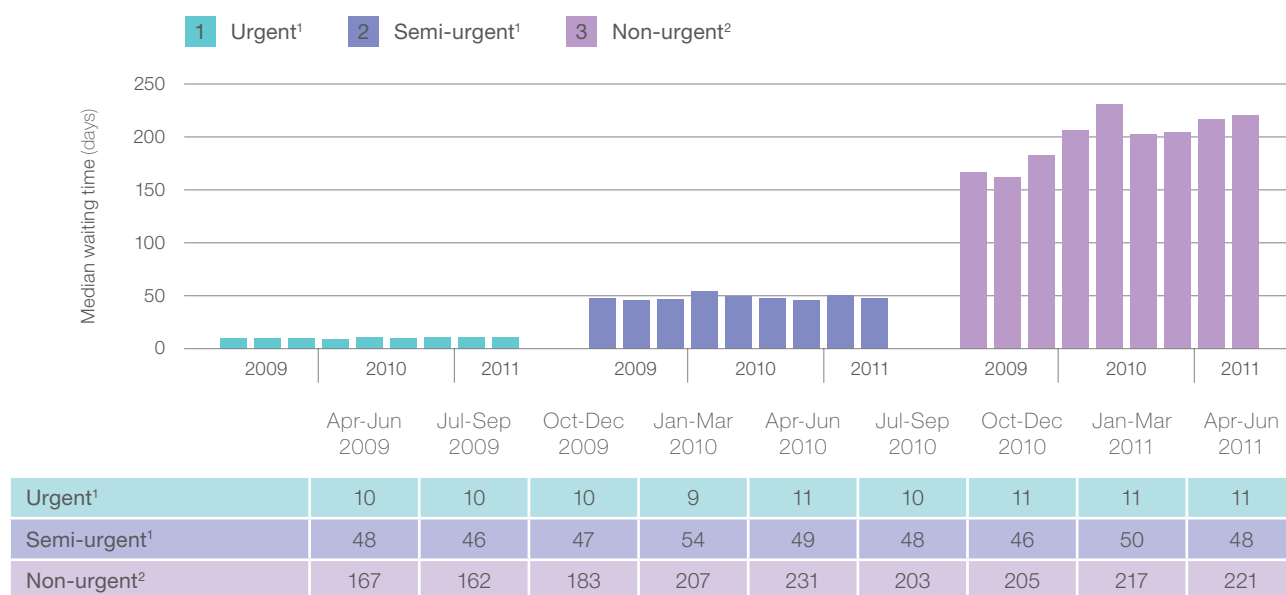
**Urgent surgery:** The median wait was 11 days – largely unchanged over the past two years, when the median wait time ranged from nine to 11 days.

**Semi-urgent surgery:** The median wait time for this category was 48 days – similar to the preceding two years.

**Non-urgent surgery:** The median wait time for this category was 221 days, ten days less than the same quarter in 2010 (231 days).

In part due to the longer wait times, non-urgent median waiting times appear as the most volatile of the three urgency categories. Over the past nine quarters, non-urgent procedure wait times have increased from 167 days in April to June 2009, peaking at 231 days in April to June 2010 before falling slightly to 221 days this quarter.

Figure 4: NSW elective surgery median waiting time (days), by urgency category, April 2009 to June 2011



1. Excluding staged procedures.

2. Excluding staged procedures and non-urgent cystoscopy.

**Note:** Patients recorded as 'deferred' when they received their surgery are allocated to 'ready for care' urgency categories as appropriate.

**Note:** Because of changes in methods and reporting, numbers of surgical procedures by urgency category will differ from those reported in previous NSW Department of Health's *Quarterly Hospital Performance Reports* and Bureau *Hospital Quarterly* reports published prior to May 2011.

**Source:** Waiting List Collection On-line System, NSW Health. Data extracted for the April to June 2011 quarter on 18 July 2011. Data extracted for all previous quarters on 15 July 2011.



## Cumulative wait time

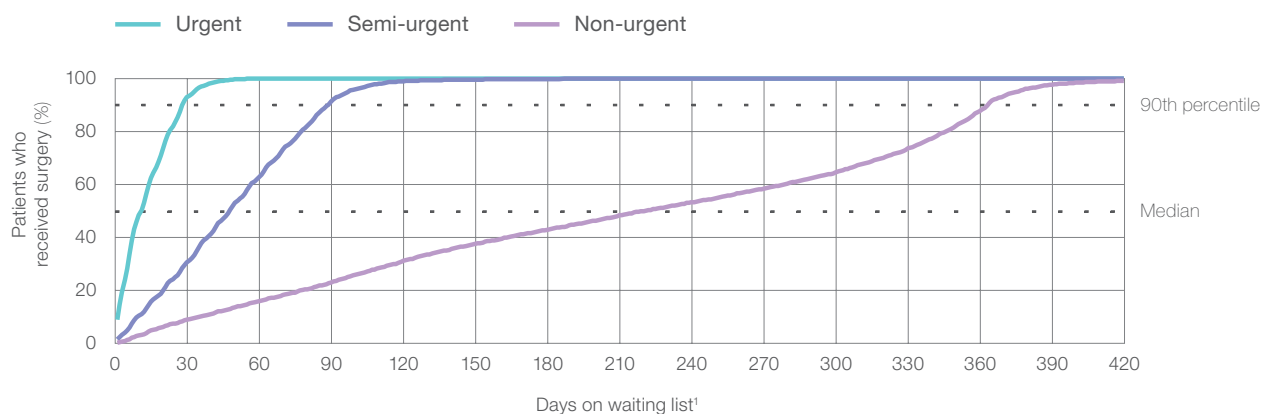
Greater detail on how long people waited to be admitted for their elective surgery during April to June 2011 is presented in [Figure 5](#).

The graph's slope indicates the rate at which patients were admitted for surgery. A steep slope demonstrates a high percentage of

patients being admitted for their surgery over the period shown. A flat slope shows relatively fewer patients receiving surgery over the period.

Urgent patients have the most rapid rate of admission and almost all patients are admitted for surgery within 45 days. Non-urgent patients are admitted at a slower rate with almost all patients admitted within 420 days.

**Figure 5:** Cumulative percentage of patients who received elective surgery, by waiting time (days), April to June 2011



**Note:** Excludes the total number of days the patient was coded as 'not ready for care'.

**Source:** Waiting List Collection On-line System, NSW Health. Data extracted on 18 July 2011.

## Small number suppression

Some hospitals conduct few surgical procedures. Small numbers in any urgency group need to be treated cautiously to protect patients' identity.

The Bureau suppresses information based on very few patients. If there are fewer than ten patients in any group, patient numbers or percentages are replaced by a symbol, which refers to footnotes about small number suppression. The Bureau may use its discretion to suppress the next smallest values, or results for an entire hospital with few patients, if there is a risk of disclosing patient identities. Because the staged procedure category is excluded from performance measure calculations, low counts in this group are not automatically suppressed ([Appendix table 1](#)).

## Appendix: Activity and performance data tables at hospital and local health district level

The following table presents the number of elective surgery admissions, by urgency category, for major hospitals in NSW.

The table is ordered by local health district and includes all principal referral, paediatric specialist, ungrouped acute – tertiary referral,

major metropolitan, major non-metropolitan, and district groups 1 and 2 hospitals that conduct elective surgery. These hospitals account for 98% of all elective surgery recorded as complete in WLCOS. Surgery information from smaller hospitals is presented for each local health district under the 'other' category.

Appendix table 1: NSW elective surgery activity, by hospital and local health district, April to June 2011

| Number of elective surgical procedures                   |                     |                          |                         |                                |       |
|--|---------------------|--------------------------|-------------------------|--------------------------------|-------|
| All categories   | Urgent <sup>1</sup> | Semi-urgent <sup>1</sup> | Non-urgent <sup>2</sup> | Staged procedures <sup>3</sup> |       |
| <b>New South Wales</b>                                   |                     |                          |                         |                                |       |
| Total New South Wales                                    | 52,089              | 12,578                   | 15,943                  | 19,696                         | 3,872 |
| <b>Central Coast Local Health District (CCLHD)</b>       |                     |                          |                         |                                |       |
| Gosford Hospital   | 1,438               | 298                      | 455                     | 495                            | 190   |
| Wyong Hospital   | 845                 | 105                      | 330                     | 343                            | 67    |
| Total CCLHD  | 2,283               | 403                      | 785                     | 838                            | 257   |
| <b>Far West Local Health District (FWLHD)</b>            |                     |                          |                         |                                |       |
| Broken Hill Base Hospital                                | 300                 | 64                       | 122                     | 97                             | 17    |
| Total FWLHD  | 300                 | 64                       | 122                     | 97                             | 17    |
| <b>Hunter New England Local Health District (HNELHD)</b> |                     |                          |                         |                                |       |
| Armidale and New England Hospital                        | 330                 | 53                       | 87                      | 182                            | 8     |
| Belmont Hospital   | 557                 | 78                       | 189                     | 258                            | 32    |
| Calvary Mater Newcastle                                  | 310                 | 183                      | 85                      | 29                             | 13    |
| Cessnock District Hospital                               | 363                 | 61                       | 215                     | 79                             | 8     |
| Gunnedah District Hospital                               | 89                  | 18                       | 29                      | 42                             | 0     |
| Inverell District Hospital                               | 101                 | 12                       | 23                      | 66                             | 0     |
| John Hunter Hospital                                     | 2,240               | 732                      | 650                     | 724                            | 134   |
| Kurri Kurri District Hospital                            | 473                 | 39                       | 118                     | 315                            | 1     |
| Maitland Hospital  | 699                 | 149                      | 274                     | 248                            | 28    |
| Manning Base Hospital                                    | 607                 | 95                       | 135                     | 353                            | 24    |
| Moree District Hospital                                  | 99                  | 14                       | 32                      | 52                             | 1     |
| Muswellbrook District Hospital                           | 79                  | 13                       | 43                      | 23                             | 0     |
| Narrabri District Hospital                               | 70                  | 27                       | 32                      | 11                             | 0     |
| Singleton District Hospital                              | 148                 | 26                       | 42                      | 78                             | 2     |
| Tamworth Base Hospital                                   | 867                 | 207                      | 272                     | 294                            | 94    |
| Other HNELHD   | 164                 | 17                       | 68                      | 79                             | 0     |
| Total HNELHD   | 7,196               | 1,724                    | 2,294                   | 2,833                          | 345   |



### Number of elective surgical procedures

|   | All categories | Urgent <sup>1</sup> | Semi-urgent <sup>1</sup> | Non-urgent <sup>2</sup> | Staged procedures <sup>3</sup> |
|---|----------------|---------------------|--------------------------|-------------------------|--------------------------------|
| <b>Illawarra Shoalhaven Local Health District (ISLHD)</b>   |                |                     |                          |                         |                                |
| Bulli District Hospital                                     | 117            | 30                  | 20                       | 65                      | 2                              |
| Milton and Ulladulla Hospital                               | 21             | *                   | *                        | *                       | *                              |
| Shellharbour Hospital                                       | 745            | 97                  | 194                      | 449                     | 5                              |
| Shoalhaven and District Memorial Hospital                   | 701            | 152                 | 149                      | 354                     | 46                             |
| Wollongong Hospital   | 1,190          | 390                 | 212                      | 282                     | 306                            |
| <b>Total ISLHD</b>  | <b>2,774</b>   | <b>681</b>          | <b>577</b>               | <b>1,157</b>            | <b>359</b>                     |
| <b>Mid North Coast Local Health District (MNCLHD)</b>       |                |                     |                          |                         |                                |
| Bellinger River District Hospital                           | 49             | *                   | 14                       | 28                      | *                              |
| Coffs Harbour Base Hospital                                 | 913            | 171                 | 240                      | 402                     | 100                            |
| Kempsey Hospital  | 283            | *                   | 27                       | 249                     | *                              |
| Macksville District Hospital                                | 89             | 13                  | *                        | 67                      | *                              |
| Port Macquarie Base Hospital                                | 682            | 190                 | 221                      | 196                     | 75                             |
| Other MNCLHD  | 190            | 10                  | 51                       | 91                      | 38                             |
| <b>Total MNCLHD</b>   | <b>2,206</b>   | <b>396</b>          | <b>561</b>               | <b>1033</b>             | <b>216</b>                     |
| <b>Murrumbidgee Local Health District (MLHD)</b>            |                |                     |                          |                         |                                |
| Deniliquin Health Service                                   | 76             | 17                  | 37                       | 21                      | 1                              |
| Griffith Base Hospital                                      | 232            | 64                  | 57                       | 92                      | 19                             |
| Tumut Health Service  | 51             | *                   | 24                       | 24                      | *                              |
| Wagga Wagga Base Hospital                                   | 1,178          | 270                 | 392                      | 485                     | 31                             |
| Young Health Service  | 74             | 14                  | 25                       | 20                      | 15                             |
| Other MLHD  | 98             | 20                  | 44                       | 33                      | 1                              |
| <b>Total MLHD</b>   | <b>1,709</b>   | <b>388</b>          | <b>579</b>               | <b>675</b>              | <b>67</b>                      |
| <b>Nepean Blue Mountains Local Health District (NBMLHD)</b> |                |                     |                          |                         |                                |
| Blue Mountains District Anzac Memorial Hospital             | 80             | 12                  | 26                       | 42                      | .                              |
| Hawkesbury District Health Service                          | 253            | 75                  | 64                       | 92                      | 22                             |
| Lithgow Health Service                                      | 148            | 10                  | 54                       | 73                      | 11                             |
| Nepean Hospital   | 1,298          | 368                 | 451                      | 443                     | 36                             |
| Other NBMLHD  | 207            | *                   | 66                       | 123                     | *                              |
| <b>Total NBMLHD</b>   | <b>1,986</b>   | <b>473</b>          | <b>661</b>               | <b>773</b>              | <b>79</b>                      |
| <b>Northern NSW Local Health District (NNSWLHD)</b>         |                |                     |                          |                         |                                |
| Ballina District Hospital                                   | 192            | 33                  | 87                       | 60                      | 12                             |
| Casino and District Memorial Hospital                       | 230            | 24                  | 76                       | 121                     | 9                              |
| Grafton Base Hospital                                       | 557            | 180                 | 174                      | 187                     | 16                             |
| Lismore Base Hospital                                       | 1,058          | 339                 | 353                      | 283                     | 83                             |
| Maclean District Hospital                                   | 0              | 0                   | 0                        | 0                       | 0                              |
| Murwillumbah District Hospital                              | 485            | 62                  | 118                      | 259                     | 46                             |
| The Tweed Hospital  | 794            | 256                 | 185                      | 233                     | 120                            |
| <b>Total NNSWLHD</b>  | <b>3,316</b>   | <b>894</b>          | <b>993</b>               | <b>1,143</b>            | <b>286</b>                     |

## Number of elective surgical procedures

|  | All categories | Urgent <sup>1</sup> | Semi-urgent <sup>1</sup> | Non-urgent <sup>2</sup> | Staged procedures <sup>3</sup> |
|--|----------------|---------------------|--------------------------|-------------------------|--------------------------------|
| <b>Northern Sydney Local Health District (NSLHD)</b>       |                |                     |                          |                         |                                |
| Hornsby and Ku-Ring-Gai Hospital                           | 572            | 99                  | 154                      | 289                     | 30                             |
| Manly District Hospital                                    | 325            | 84                  | 138                      | 83                      | 20                             |
| Mona Vale and District Hospital                            | 402            | 61                  | 90                       | 231                     | 20                             |
| Royal North Shore Hospital                                 | 1,430          | 526                 | 399                      | 448                     | 57                             |
| Ryde Hospital  | 332            | 31                  | 151                      | 141                     | 9                              |
| <b>Total NSLHD</b>   | <b>3,061</b>   | <b>801</b>          | <b>932</b>               | <b>1,192</b>            | <b>136</b>                     |
| <b>South Eastern Sydney Local Health District (SESLHD)</b> |                |                     |                          |                         |                                |
| Prince of Wales Hospital                                   | 1,347          | 362                 | 616                      | 348                     | 21                             |
| Royal Hospital for Women                                   | 482            | 196                 | 175                      | 110                     | 1                              |
| St George Hospital   | 1,120          | 511                 | 327                      | 267                     | 15                             |
| Sutherland Hospital  | 791            | 202                 | 266                      | 298                     | 25                             |
| Sydney Hospital / Sydney Eye Hospital                      | 1,336          | 259                 | 313                      | 762                     | 2                              |
| <b>Total SESLHD</b>  | <b>5,076</b>   | <b>1,530</b>        | <b>1,697</b>             | <b>1,785</b>            | <b>64</b>                      |
| <b>South Western Sydney Local Health District (SWSLHD)</b> |                |                     |                          |                         |                                |
| Bankstown / Lidcombe Hospital                              | 1,321          | 202                 | 333                      | 576                     | 210                            |
| Bowral and District Hospital                               | 360            | 48                  | 89                       | 212                     | 11                             |
| Campbelltown Hospital                                      | 1,023          | 112                 | 251                      | 355                     | 305                            |
| Fairfield Hospital   | 608            | 68                  | 115                      | 377                     | 48                             |
| Liverpool Hospital   | 1,825          | 615                 | 486                      | 618                     | 106                            |
| <b>Total SWSLHD</b>  | <b>5,137</b>   | <b>1,045</b>        | <b>1,274</b>             | <b>2,138</b>            | <b>680</b>                     |
| <b>Southern NSW Local Health District (SNSWLHD)</b>        |                |                     |                          |                         |                                |
| Bateman's Bay District Hospital                            | 223            | *                   | 25                       | 174                     | *                              |
| Bega District Hospital                                     | 333            | 108                 | 65                       | 140                     | 20                             |
| Cooma Health Service                                       | 55             | 13                  | 17                       | 24                      | 1                              |
| Goulburn Base Hospital                                     | 325            | 73                  | 106                      | 144                     | 2                              |
| Moruya District Hospital                                   | 170            | 59                  | 51                       | 59                      | 1                              |
| Pambula District Hospital                                  | 33             | 16                  | *                        | 14                      | *                              |
| Queanbeyan Health Service                                  | 169            | 17                  | 92                       | 59                      | 1                              |
| <b>Total SNSWLHD</b>                                       | <b>1,308</b>   | <b>293</b>          | <b>359</b>               | <b>614</b>              | <b>42</b>                      |
| <b>St Vincent's Health Network (SVHN)</b>                  |                |                     |                          |                         |                                |
| St Vincent's Hospital, Darlinghurst                        | 933            | 360                 | 241                      | 257                     | 75                             |
| <b>Total SVHN</b>  | <b>933</b>     | <b>360</b>          | <b>241</b>               | <b>257</b>              | <b>75</b>                      |
| <b>Sydney Children's Hospitals Network (SCHN)</b>          |                |                     |                          |                         |                                |
| Sydney Children's Hospital                                 | 739            | 172                 | 257                      | 294                     | 16                             |
| The Children's Hospital at Westmead                        | 1,651          | 367                 | 564                      | 584                     | 136                            |
| <b>Total SCHN</b>  | <b>2,390</b>   | <b>539</b>          | <b>821</b>               | <b>878</b>              | <b>152</b>                     |

### Number of elective surgical procedures

|   | All categories | Urgent <sup>1</sup> | Semi-urgent <sup>1</sup> | Non-urgent <sup>2</sup> | Staged procedures <sup>3</sup> |
|---|----------------|---------------------|--------------------------|-------------------------|--------------------------------|
| <b>Sydney Local Health District (SYDLHD)</b>        |                |                     |                          |                         |                                |
| Canterbury Hospital                                 | 695            | 105                 | 283                      | 246                     | 61                             |
| Concord Hospital                                    | 2,124          | 384                 | 518                      | 834                     | 388                            |
| RPAH Institute of Rheumatology and Orthopaedics     | 424            | 37                  | 61                       | 325                     | 1                              |
| Royal Prince Alfred Hospital                        | 2,922          | 1,009               | 1,054                    | 554                     | 305                            |
| <b>Total SYDLHD</b>                                 | <b>6,165</b>   | <b>1,535</b>        | <b>1,916</b>             | <b>1,959</b>            | <b>755</b>                     |
| <b>Western NSW Local Health District (WNSWLHD)</b>  |                |                     |                          |                         |                                |
| Bathurst Base Hospital                              | 364            | 109                 | 141                      | 98                      | 16                             |
| Cowra District Hospital                             | 132            | 22                  | 29                       | 81                      | 0                              |
| Dubbo Base Hospital                                 | 798            | 81                  | 195                      | 449                     | 73                             |
| Forbes District Hospital                            | 109            | *                   | 33                       | 70                      | *                              |
| Mudgee District Hospital                            | 108            | *                   | 36                       | 57                      | *                              |
| Orange Base Hospital                                | 734            | 114                 | 253                      | 288                     | 79                             |
| Parkes District Hospital                            | 71             | 10                  | 27                       | 33                      | 1                              |
| Other WNSWLHD                                       | 25             | 0                   | 0                        | 25                      | 0                              |
| <b>Total WNSWLHD</b>                                | <b>2,341</b>   | <b>351</b>          | <b>714</b>               | <b>1,101</b>            | <b>175</b>                     |
| <b>Western Sydney Local Health District (WSLHD)</b> |                |                     |                          |                         |                                |
| Auburn Hospital                                     | 803            | 160                 | 256                      | 377                     | 10                             |
| Blacktown Hospital                                  | 779            | 173                 | 338                      | 240                     | 28                             |
| Mount Druitt Hospital                               | 531            | 50                  | 233                      | 241                     | 7                              |
| Westmead Hospital (all units)                       | 1,795          | 718                 | 590                      | 365                     | 122                            |
| <b>Total WSLHD</b>                                  | <b>3,908</b>   | <b>1,101</b>        | <b>1,417</b>             | <b>1,223</b>            | <b>167</b>                     |

1. Excluding staged procedures.

2. Excluding staged procedures and non-urgent cystoscopy.

3. Including non-urgent cystoscopy.

(\*) Values suppressed due to small numbers and to protect privacy. Suppressed data have been excluded from local health district totals.

**Note:** All urgency categories include deferred patients as appropriate.

**Note:** Because staged patients are now reported separately, numbers of surgical procedures by urgency category for this quarter are not comparable to data reported in previous NSW Department of Health's *Quarterly Hospital Performance Reports* and Bureau *Hospital Quarterly* reports prior to May 2011.

**Source:** Waiting List Collection On-line System, NSW Health. Data extracted on 18 July 2011.

The following table presents the percentage of elective surgery admissions within the clinically recommended time for each urgency category for this quarter. The table is ordered by local health district and includes all principal referral, paediatric specialist, ungrouped acute

– tertiary referral, major metropolitan, major non-metropolitan and district groups 1 and 2 hospitals that conduct elective surgery. Surgery information from smaller hospitals is presented for each local health district under the 'other' category.

Appendix table 2: NSW on-time elective surgery performance, by hospital and local health district, April to June 2011

| Percentage of patients treated on time                   |                             |                     |                          |                         |
|--|-----------------------------|---------------------|--------------------------|-------------------------|
|  | All categories <sup>1</sup> | Urgent <sup>1</sup> | Semi-urgent <sup>1</sup> | Non-urgent <sup>2</sup> |
| <b>New South Wales</b>                                   |                             |                     |                          |                         |
| Total New South Wales                                    | 92                          | 93                  | 91                       | 92                      |
| <b>Central Coast Local Health District (CCLHD)</b>       |                             |                     |                          |                         |
| Gosford Hospital   | 91                          | 98                  | 89                       | 88                      |
| Wyong Hospital   | 98                          | 99                  | 97                       | 98                      |
| Total CCLHD  | 93                          | 99                  | 92                       | 92                      |
| <b>Far West Local Health District (FWLHD)</b>            |                             |                     |                          |                         |
| Broken Hill Base Hospital                                | 87                          | 100                 | 70                       | 100                     |
| Total FWLHD  | 87                          | 100                 | 70                       | 100                     |
| <b>Hunter New England Local Health District (HNELHD)</b> |                             |                     |                          |                         |
| Armidale and New England Hospital                        | 98                          | 100                 | 99                       | 97                      |
| Belmont Hospital   | 99                          | 99                  | 99                       | 99                      |
| Calvary Mater Newcastle                                  | 68                          | 61                  | 71                       | 100                     |
| Cessnock District Hospital                               | 97                          | 100                 | 96                       | 97                      |
| Gunnedah District Hospital                               | 100                         | 100                 | 100                      | 100                     |
| Inverell District Hospital                               | 93                          | 100                 | 100                      | 89                      |
| John Hunter Hospital                                     | 91                          | 93                  | 87                       | 93                      |
| Kurri Kurri District Hospital                            | 92                          | 100                 | 89                       | 91                      |
| Maitland Hospital  | 90                          | 88                  | 95                       | 87                      |
| Manning Base Hospital                                    | 93                          | 100                 | 90                       | 93                      |
| Moree District Hospital                                  | 100                         | 100                 | 100                      | 100                     |
| Muswellbrook District Hospital                           | 100                         | 100                 | 100                      | 100                     |
| Narrabri District Hospital                               | 100                         | 100                 | 100                      | 100                     |
| Singleton District Hospital                              | 100                         | 100                 | 100                      | 100                     |
| Tamworth Base Hospital                                   | 94                          | 100                 | 89                       | 93                      |
| Other HNELHD   | 100                         | 100                 | 100                      | 100                     |
| Total HNELHD   | 93                          | 92                  | 92                       | 94                      |

### Percentage of patients treated on time

|   | All categories <sup>1</sup> | Urgent <sup>1</sup> | Semi-urgent <sup>1</sup> | Non-urgent <sup>2</sup> |
|---|-----------------------------|---------------------|--------------------------|-------------------------|
| <b>Illawarra Shoalhaven Local Health District (ISLHD)</b>   |                             |                     |                          |                         |
| Bulli District Hospital                                     | 100                         | 100                 | 100                      | 100                     |
| Milton and Ulladulla Hospital                               | *                           | *                   | *                        | *                       |
| Shellharbour Hospital                                       | 91                          | 85                  | 94                       | 91                      |
| Shoalhaven and District Memorial Hospital                   | 88                          | 88                  | 88                       | 88                      |
| Wollongong Hospital   | 89                          | 90                  | 85                       | 90                      |
| <b>Total ISLHD</b>  | <b>90</b>                   | <b>89</b>           | <b>89</b>                | <b>90</b>               |
| <b>Mid North Coast Local Health District (MNCLHD)</b>       |                             |                     |                          |                         |
| Bellinger River District Hospital                           | 98                          | *                   | 100                      | 100                     |
| Coffs Harbour Base Hospital                                 | 71                          | 78                  | 78                       | 64                      |
| Kempsey Hospital  | 98                          | *                   | 85                       | 99                      |
| Macksville District Hospital                                | 85                          | 100                 | *                        | 82                      |
| Port Macquarie Base Hospital                                | 86                          | 88                  | 80                       | 91                      |
| Other MNCLHD  | 95                          | 90                  | 98                       | 95                      |
| <b>Total MNCLHD</b>   | <b>82</b>                   | <b>84</b>           | <b>81</b>                | <b>82</b>               |
| <b>Murrumbidgee Local Health District (MLHD)</b>            |                             |                     |                          |                         |
| Deniliquin Health Service                                   | 100                         | 100                 | 100                      | 100                     |
| Griffith Base Hospital                                      | 80                          | 53                  | 84                       | 96                      |
| Tumut Health Service  | 86                          | *                   | 75                       | 96                      |
| Wagga Wagga Base Hospital                                   | 86                          | 88                  | 90                       | 81                      |
| Young Health Service  | 88                          | 71                  | 88                       | 100                     |
| Other MLHD  | 99                          | 95                  | 100                      | 100                     |
| <b>Total MLHD</b>   | <b>86</b>                   | <b>82</b>           | <b>90</b>                | <b>86</b>               |
| <b>Nepean Blue Mountains Local Health District (NBMLHD)</b> |                             |                     |                          |                         |
| Blue Mountains District Anzac Memorial Hospital             | 100                         | 100                 | 100                      | 100                     |
| Hawkesbury District Health Service                          | 71                          | 91                  | 73                       | 53                      |
| Lithgow Health Service                                      | 99                          | 100                 | 96                       | 100                     |
| Nepean Hospital   | 82                          | 96                  | 83                       | 70                      |
| Other NBMLHD  | 93                          | *                   | 100                      | 89                      |
| <b>Total NBMLHD</b>   | <b>84</b>                   | <b>96</b>           | <b>85</b>                | <b>75</b>               |
| <b>Northern NSW Local Health District (NNSWLHD)</b>         |                             |                     |                          |                         |
| Ballina District Hospital                                   | 99                          | 100                 | 99                       | 100                     |
| Casino and District Memorial Hospital                       | 100                         | 100                 | 100                      | 99                      |
| Grafton Base Hospital                                       | 96                          | 98                  | 97                       | 94                      |
| Lismore Base Hospital                                       | 84                          | 86                  | 83                       | 84                      |
| Maclean District Hospital                                   | †                           | †                   | †                        | †                       |
| Murwillumbah District Hospital                              | 92                          | 87                  | 89                       | 95                      |
| The Tweed Hospital  | 86                          | 84                  | 83                       | 90                      |
| <b>Total NNSWLHD</b>  | <b>90</b>                   | <b>89</b>           | <b>89</b>                | <b>92</b>               |

### Percentage of patients treated on time

|  | All categories <sup>1</sup> | Urgent <sup>1</sup> | Semi-urgent <sup>1</sup> | Non-urgent <sup>2</sup> |
|--|-----------------------------|---------------------|--------------------------|-------------------------|
| <b>Northern Sydney Local Health District (NSLHD)</b>       |                             |                     |                          |                         |
| Hornsby and Ku-Ring-Gai Hospital                           | 99                          | 99                  | 99                       | 98                      |
| Manly District Hospital                                    | 98                          | 100                 | 96                       | 100                     |
| Mona Vale and District Hospital                            | 100                         | 98                  | 100                      | 100                     |
| Royal North Shore Hospital                                 | 97                          | 97                  | 95                       | 98                      |
| Ryde Hospital  | 89                          | 97                  | 85                       | 92                      |
| <b>Total NSLHD</b>   | <b>97</b>                   | <b>97</b>           | <b>95</b>                | <b>98</b>               |
| <b>South Eastern Sydney Local Health District (SESLHD)</b> |                             |                     |                          |                         |
| Prince of Wales Hospital                                   | 91                          | 88                  | 95                       | 89                      |
| Royal Hospital for Women                                   | 99                          | 98                  | 99                       | 99                      |
| St George Hospital   | 83                          | 85                  | 85                       | 77                      |
| Sutherland Hospital  | 89                          | 76                  | 89                       | 96                      |
| Sydney Hospital / Sydney Eye Hospital                      | 99                          | 100                 | 99                       | 98                      |
| <b>Total SESLHD</b>  | <b>92</b>                   | <b>89</b>           | <b>93</b>                | <b>93</b>               |
| <b>South Western Sydney Local Health District (SWSLHD)</b> |                             |                     |                          |                         |
| Bankstown / Lidcombe Hospital                              | 91                          | 90                  | 92                       | 90                      |
| Bowral and District Hospital                               | 100                         | 100                 | 99                       | 100                     |
| Campbelltown Hospital                                      | 84                          | 71                  | 81                       | 90                      |
| Fairfield Hospital   | 100                         | 100                 | 100                      | 100                     |
| Liverpool Hospital   | 91                          | 91                  | 92                       | 89                      |
| <b>Total SWSLHD</b>  | <b>92</b>                   | <b>90</b>           | <b>91</b>                | <b>93</b>               |
| <b>Southern NSW Local Health District (SNSWLHD)</b>        |                             |                     |                          |                         |
| Bateman's Bay District Hospital                            | 98                          | *                   | 96                       | 99                      |
| Bega District Hospital                                     | 91                          | 94                  | 86                       | 92                      |
| Cooma Health Service                                       | 94                          | 85                  | 94                       | 100                     |
| Goulburn Base Hospital                                     | 93                          | 97                  | 89                       | 93                      |
| Moruya District Hospital                                   | 92                          | 85                  | 90                       | 100                     |
| Pambula District Hospital                                  | 94                          | 88                  | *                        | 100                     |
| Queanbeyan Health Service                                  | 100                         | 100                 | 100                      | 100                     |
| <b>Total SNSWLHD</b>                                       | <b>94</b>                   | <b>92</b>           | <b>92</b>                | <b>96</b>               |
| <b>St Vincent's Health Network (SVHN)</b>                  |                             |                     |                          |                         |
| St Vincent's Hospital, Darlinghurst                        | 95                          | 97                  | 93                       | 93                      |
| <b>Total SVHN</b>  | <b>95</b>                   | <b>97</b>           | <b>93</b>                | <b>93</b>               |
| <b>Sydney Children's Hospitals Network (SCHN)</b>          |                             |                     |                          |                         |
| Sydney Children's Hospital                                 | 97                          | 96                  | 98                       | 98                      |
| The Children's Hospital at Westmead                        | 87                          | 99                  | 82                       | 84                      |
| <b>Total SCHN</b>  | <b>90</b>                   | <b>98</b>           | <b>87</b>                | <b>89</b>               |



### Percentage of patients treated on time

|   | All categories <sup>1</sup> | Urgent <sup>1</sup> | Semi-urgent <sup>1</sup> | Non-urgent <sup>2</sup> |
|---|-----------------------------|---------------------|--------------------------|-------------------------|
| <b>Sydney Local Health District (SYDLHD)</b>        |                             |                     |                          |                         |
| Canterbury Hospital                                 | 92                          | 100                 | 89                       | 93                      |
| Concord Hospital                                    | 97                          | 95                  | 97                       | 98                      |
| RPAH Institute of Rheumatology and Orthopaedics     | 100                         | 100                 | 100                      | 100                     |
| Royal Prince Alfred Hospital                        | 100                         | 99                  | 100                      | 100                     |
| <b>Total SYDLHD</b>                                 | <b>98</b>                   | <b>98</b>           | <b>98</b>                | <b>98</b>               |
| <b>Western NSW Local Health District (WNSWLHD)</b>  |                             |                     |                          |                         |
| Bathurst Base Hospital                              | 92                          | 94                  | 92                       | 89                      |
| Cowra District Hospital                             | 98                          | 95                  | 97                       | 100                     |
| Dubbo Base Hospital                                 | 98                          | 98                  | 95                       | 99                      |
| Forbes District Hospital                            | 100                         | *                   | 100                      | 100                     |
| Mudgee District Hospital                            | 92                          | *                   | 89                       | 93                      |
| Orange Base Hospital                                | 80                          | 96                  | 77                       | 76                      |
| Parkes District Hospital                            | 99                          | 100                 | 96                       | 100                     |
| Other WNSWLHD                                       | 84                          | †                   | †                        | 84                      |
| <b>Total WNSWLHD</b>                                | <b>91</b>                   | <b>96</b>           | <b>88</b>                | <b>92</b>               |
| <b>Western Sydney Local Health District (WSLHD)</b> |                             |                     |                          |                         |
| Auburn Hospital                                     | 89                          | 90                  | 84                       | 92                      |
| Blacktown Hospital                                  | 91                          | 94                  | 88                       | 93                      |
| Mount Druitt Hospital                               | 83                          | 94                  | 86                       | 78                      |
| Westmead Hospital (all units)                       | 94                          | 99                  | 96                       | 83                      |
| <b>Total WSLHD</b>                                  | <b>91</b>                   | <b>97</b>           | <b>90</b>                | <b>87</b>               |

1. Excluding staged procedures.

2. Excluding staged procedures and non-urgent cystoscopy.

(\*) Values suppressed due to small numbers and to protect privacy.

(†) This hospital or group conducted no surgery for this urgency category in this quarter and therefore has no on-time performance value.

**Note:** All urgency categories include deferred patients as appropriate.

**Note:** Because staged patients are now reported separately, on-time performance by urgency category for this quarter are not comparable to data reported in previous NSW Department of Health's *Quarterly Hospital Performance Reports* and *Bureau Hospital Quarterly* reports prior to May 2011.

**Source:** Waiting List Collection On-line System, NSW Health. Data extracted on 18 July 2011.

The following table presents the median waiting time (in days) of elective surgery admissions for each urgency category for this quarter.

The table is ordered by local health district and includes all principal referral, paediatric specialist, ungrouped acute – tertiary referral,

major metropolitan, major non-metropolitan and district groups 1 and 2 hospitals that conduct elective surgery. Surgery information from smaller hospitals is presented for each local health district under the 'other' category.

Appendix table 3: NSW median elective surgery waiting time performance, by hospital and local health district, April to June 2011

|  | Median waiting time (days) |                          |                         |
|--|----------------------------|--------------------------|-------------------------|
|  | Urgent <sup>1</sup>        | Semi-urgent <sup>1</sup> | Non-urgent <sup>2</sup> |
| <b>New South Wales</b>                                   |                            |                          |                         |
| Total New South Wales                                    | 11                         | 48                       | 221                     |
| <b>Central Coast Local Health District (CCLHD)</b>       |                            |                          |                         |
| Gosford Hospital   | 17                         | 64                       | 336                     |
| Wyong Hospital   | 14                         | 37                       | 274                     |
| Total CCLHD  | 16                         | 50                       | 311                     |
| <b>Far West Local Health District (FWLHD)</b>            |                            |                          |                         |
| Broken Hill Base Hospital                                | 15                         | 78                       | 208                     |
| Total FWLHD  | 15                         | 78                       | 208                     |
| <b>Hunter New England Local Health District (HNELHD)</b> |                            |                          |                         |
| Armidale and New England Hospital                        | 15                         | 71                       | 305                     |
| Belmont Hospital   | 14                         | 47                       | 184                     |
| Calvary Mater Newcastle                                  | 22                         | 66                       | 227                     |
| Cessnock District Hospital                               | 7                          | 14                       | 35                      |
| Gunnedah District Hospital                               | 8                          | 47                       | 83                      |
| Inverell District Hospital                               | 25                         | 35                       | 350                     |
| John Hunter Hospital                                     | 10                         | 46                       | 252                     |
| Kurri Kurri District Hospital                            | 6                          | 8                        | 281                     |
| Maitland Hospital  | 13                         | 42                       | 254                     |
| Manning Base Hospital                                    | 20                         | 70                       | 291                     |
| Moree District Hospital                                  | 10                         | 22                       | 137                     |
| Muswellbrook District Hospital                           | 6                          | 15                       | 74                      |
| Narrabri District Hospital                               | 8                          | 17                       | 83                      |
| Singleton District Hospital                              | 12                         | 34                       | 48                      |
| Tamworth Base Hospital                                   | 10                         | 43                       | 215                     |
| Other HNELHD   | 14                         | 35                       | 124                     |
| Total HNELHD   | 12                         | 42                       | 228                     |

Median waiting time (days)

| Urgent <sup>1</sup> | Semi-urgent <sup>1</sup> | Non-urgent <sup>2</sup> |
|---------------------|--------------------------|-------------------------|
|---------------------|--------------------------|-------------------------|

| Illawarra Shoalhaven Local Health District (ISLHD) |    |    |     |
|--|----|----|-----|
| Bulli District Hospital                            | 7  | 39 | 209 |
| Milton and Ulladulla Hospital                      | *  | *  | *   |
| Shellharbour Hospital                              | 20 | 60 | 222 |
| Shoalhaven and District Memorial Hospital          | 16 | 68 | 316 |
| Wollongong Hospital                                | 8  | 68 | 306 |
| Total ISLHD  | 11 | 62 | 270 |

| Mid North Coast Local Health District (MNCLHD) |    |    |     |
|--|----|----|-----|
| Bellingen River District Hospital              | *  | 39 | 77  |
| Coffs Harbour Base Hospital                    | 20 | 76 | 357 |
| Kempsey Hospital                               | *  | 70 | 196 |
| Macksville District Hospital                   | 25 | *  | 348 |
| Port Macquarie Base Hospital                   | 19 | 64 | 288 |
| Other MNCLHD                                   | 25 | 69 | 239 |
| Total MNCLHD                                   | 20 | 69 | 303 |

| Murrumbidgee Local Health District (MLHD) |    |    |     |
|---|----|----|-----|
| Deniliquin Health Service                 | 11 | 44 | 161 |
| Griffith Base Hospital                    | 27 | 65 | 313 |
| Tumut Health Service                      | *  | 65 | 77  |
| Wagga Wagga Base Hospital                 | 19 | 58 | 313 |
| Young Health Service                      | 14 | 63 | 141 |
| Other MLHD                                | 12 | 42 | 50  |
| Total MLHD                                | 19 | 57 | 302 |

| Nepean Blue Mountains Local Health District (NBMLHD) |    |    |     |
|--|----|----|-----|
| Blue Mountains District Anzac Memorial Hospital      | 11 | 30 | 30  |
| Hawkesbury District Health Service                   | 20 | 66 | 359 |
| Lithgow Health Service                               | 23 | 53 | 277 |
| Nepean Hospital                                      | 11 | 69 | 330 |
| Other NBMLHD   | *  | 44 | 241 |
| Total NBMLHD   | 12 | 63 | 287 |

| Northern NSW Local Health District (NNSWLHD) |    |    |     |
|--|----|----|-----|
| Ballina District Hospital                    | 14 | 37 | 67  |
| Casino and District Memorial Hospital        | 9  | 28 | 57  |
| Grafton Base Hospital                        | 13 | 42 | 293 |
| Lismore Base Hospital                        | 14 | 63 | 318 |
| Macleay District Hospital                    | †  | †  | †   |
| Murwillumbah District Hospital               | 17 | 62 | 316 |
| The Tweed Hospital                           | 19 | 58 | 209 |
| Total NNSWLHD                                | 15 | 54 | 256 |

### Median waiting time (days)

| Urgent <sup>1</sup> | Semi-urgent <sup>1</sup> | Non-urgent <sup>2</sup> |
|---------------------|--------------------------|-------------------------|
|---------------------|--------------------------|-------------------------|

|  |           |           |            |
|--|-----------|-----------|------------|
| <b>Northern Sydney Local Health District (NSLHD)</b>       |           |           |            |
| Hornsby and Ku-Ring-Gai Hospital                           | 8         | 34        | 110        |
| Manly District Hospital                                    | 9         | 47        | 76         |
| Mona Vale and District Hospital                            | 4         | 22        | 55         |
| Royal North Shore Hospital                                 | 6         | 42        | 124        |
| Ryde Hospital  | 13        | 48        | 168        |
| <b>Total NSLHD</b>   | <b>7</b>  | <b>40</b> | <b>109</b> |
| <b>South Eastern Sydney Local Health District (SESLHD)</b> |           |           |            |
| Prince of Wales Hospital                                   | 14        | 45        | 253        |
| Royal Hospital for Women                                   | 10        | 34        | 70         |
| St George Hospital   | 15        | 54        | 303        |
| Sutherland Hospital  | 20        | 57        | 287        |
| Sydney Hospital / Sydney Eye Hospital                      | 8         | 40        | 197        |
| <b>Total SESLHD</b>  | <b>13</b> | <b>46</b> | <b>215</b> |
| <b>South Western Sydney Local Health District (SWSLHD)</b> |           |           |            |
| Bankstown / Lidcombe Hospital                              | 14        | 57        | 191        |
| Bowral and District Hospital                               | 14        | 45        | 140        |
| Campbelltown Hospital                                      | 26        | 63        | 254        |
| Fairfield Hospital   | 7         | 50        | 294        |
| Liverpool Hospital   | 13        | 50        | 269        |
| <b>Total SWSLHD</b>  | <b>14</b> | <b>54</b> | <b>251</b> |
| <b>Southern NSW Local Health District (SNSWLHD)</b>        |           |           |            |
| Bateman's Bay District Hospital                            | *         | 54        | 331        |
| Bega District Hospital                                     | 12        | 70        | 344        |
| Cooma Health Service                                       | 20        | 52        | 310        |
| Goulburn Base Hospital                                     | 12        | 56        | 237        |
| Moruya District Hospital                                   | 15        | 49        | 116        |
| Pambula District Hospital                                  | 14        | *         | 283        |
| Queanbeyan Health Service                                  | 16        | 62        | 141        |
| <b>Total SNSWLHD</b>                                       | <b>13</b> | <b>59</b> | <b>313</b> |
| <b>St Vincent's Health Network (SVHN)</b>                  |           |           |            |
| St Vincent's Hospital, Darlinghurst                        | 6         | 42        | 154        |
| <b>Total SVHN</b>  | <b>6</b>  | <b>42</b> | <b>154</b> |
| <b>Sydney Children's Hospitals Network (SCHN)</b>          |           |           |            |
| Sydney Children's Hospital                                 | 7         | 31        | 134        |
| The Children's Hospital at Westmead                        | 6         | 53        | 145        |
| <b>Total SCHN</b>  | <b>6</b>  | <b>47</b> | <b>141</b> |

### Median waiting time (days)

| Urgent <sup>1</sup> | Semi-urgent <sup>1</sup> | Non-urgent <sup>2</sup> |
|---------------------|--------------------------|-------------------------|
|---------------------|--------------------------|-------------------------|

| Sydney Local Health District (SYDLHD)           |          |           |           |
|---|----------|-----------|-----------|
| Canterbury Hospital                             | 8        | 69        | 327       |
| Concord Hospital                                | 9        | 45        | 140       |
| RPAH Institute of Rheumatology and Orthopaedics | 9        | 30        | 50        |
| Royal Prince Alfred Hospital                    | 6        | 15        | 23        |
| <b>Total SYDLHD</b>                             | <b>7</b> | <b>30</b> | <b>83</b> |

| Western NSW Local Health District (WNSWLHD) |           |           |            |
|---|-----------|-----------|------------|
| Bathurst Base Hospital                      | 12        | 61        | 257        |
| Cowra District Hospital                     | 19        | 56        | 236        |
| Dubbo Base Hospital                         | 9         | 34        | 259        |
| Forbes District Hospital                    | *         | 35        | 337        |
| Mudgee District Hospital                    | *         | 55        | 273        |
| Orange Base Hospital                        | 10        | 70        | 345        |
| Parkes District Hospital                    | 4         | 21        | 26         |
| Other WNSWLHD                               | †         | †         | 342        |
| <b>Total WNSWLHD</b>                        | <b>10</b> | <b>56</b> | <b>285</b> |

| Western Sydney Local Health District (WSLHD) |           |           |            |
|--|-----------|-----------|------------|
| Auburn Hospital                              | 14        | 63        | 225        |
| Blacktown Hospital                           | 12        | 45        | 113        |
| Mount Druitt Hospital                        | 13        | 51        | 302        |
| Westmead Hospital (all units)                | 10        | 39        | 126        |
| <b>Total WSLHD</b>                           | <b>11</b> | <b>44</b> | <b>178</b> |

1. Excluding staged procedures.
2. Excluding staged procedures and non-urgent cystoscopy.
- (\*) Values suppressed due to small numbers and to protect privacy.
- (†) This hospital or group conducted no surgery for this urgency category in this quarter and therefore has no on-time performance value.

**Note:** All urgency categories include deferred patients as appropriate.

**Note:** Because staged patients are now reported separately, median waiting times by urgency category for this quarter are not comparable to data reported in previous NSW Department of Health's *Quarterly Hospital Performance Reports* and *Bureau Hospital Quarterly* reports prior to May 2011.

**Source:** Waiting List Collection On-line System, NSW Health. Data extracted on 18 July 2011.

## Download our reports

The report, *Hospital Quarterly: Performance of NSW public hospitals, April to June 2011* and related reports are available at [www.bhi.nsw.gov.au](http://www.bhi.nsw.gov.au)

The suite of products includes:

- Three core modules on Admitted Patients, Elective Surgery and Emergency Departments
- *Performance Profiles: Elective surgery* (performance and activity reports for more than 80 hospitals and NSW as a whole)
- *Performance Profiles: Emergency department care* (activity reports for EDs in more than 60 hospitals and NSW as a whole)
- *Data Quality Assessments*
- *Technical Supplements*



## About the Bureau

The Bureau of Health Information provides the community, healthcare professionals and the NSW Parliament with timely, accurate and comparable information on the performance of the NSW public health system in ways that enhance the system's accountability and inform efforts to increase its beneficial impact on the health and wellbeing of the people of NSW.

The Bureau is an independent, board-governed statutory health corporation. The conclusions in this report are those of the Bureau and no official endorsement by the NSW Minister for Health, the NSW Department of Health or any other NSW public health organisation is intended or should be inferred.

### To contact the Bureau

**Telephone:** +61 2 8644 2100

**Fax:** +61 2 8644 2119

**Email:** [enquiries@bhi.nsw.gov.au](mailto:enquiries@bhi.nsw.gov.au)

**Postal address:**

PO Box 1770

Chatswood

New South Wales 2057

Australia

**Web:** [www.bhi.nsw.gov.au](http://www.bhi.nsw.gov.au)

Copyright Bureau of Health Information 2011

State Health Publication Number: (BHI) 110186  
ISSN 1838-3238

Suggested citation: Bureau of Health Information.  
*Hospital Quarterly: Performance of NSW public hospitals, April to June 2011. Elective Surgery.*  
2(2). Sydney (NSW); 2011.

Published September 2011

Please note that there is the potential for minor revisions of data in this report. Please check the online version at [www.bhi.nsw.gov.au](http://www.bhi.nsw.gov.au) for any amendments.