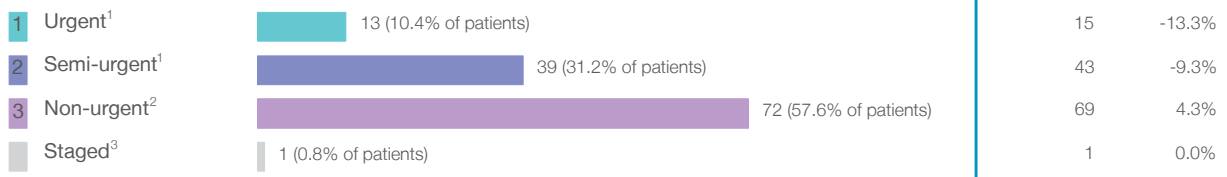


Cowra District Hospital: Elective surgery performed

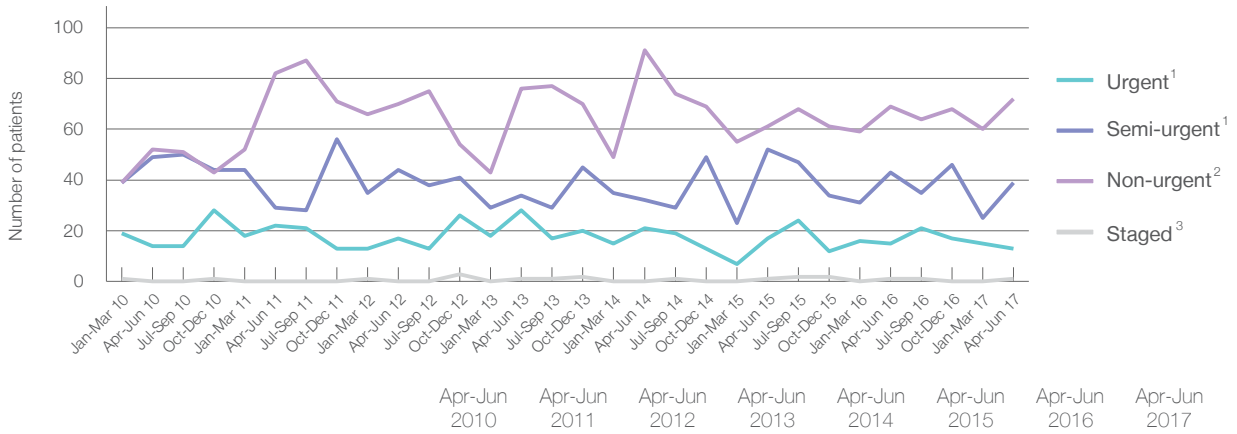
April to June 2017

Patients who received elective surgery by urgency category: 125 patients



Urgency Category	Same period last year	Change since one year ago
1 Urgent ¹	15	-13.3%
2 Semi-urgent ¹	43	-9.3%
3 Non-urgent ²	69	4.3%
Staged ³	1	0.0%

Patients who received elective surgery by urgency category by quarter, April 2012 to June 2017



	Apr-Jun 2010	Apr-Jun 2011	Apr-Jun 2012	Apr-Jun 2013	Apr-Jun 2014	Apr-Jun 2015	Apr-Jun 2016	Apr-Jun 2017
All categories	115	133	131	139	144	131	128	125
Urgent ¹	14	22	17	28	21	17	15	13
Semi-urgent ¹	49	29	44	34	32	52	43	39
Non-urgent ²	52	82	70	76	91	61	69	72
Staged ³	0	0	0	1	0	1	1	1

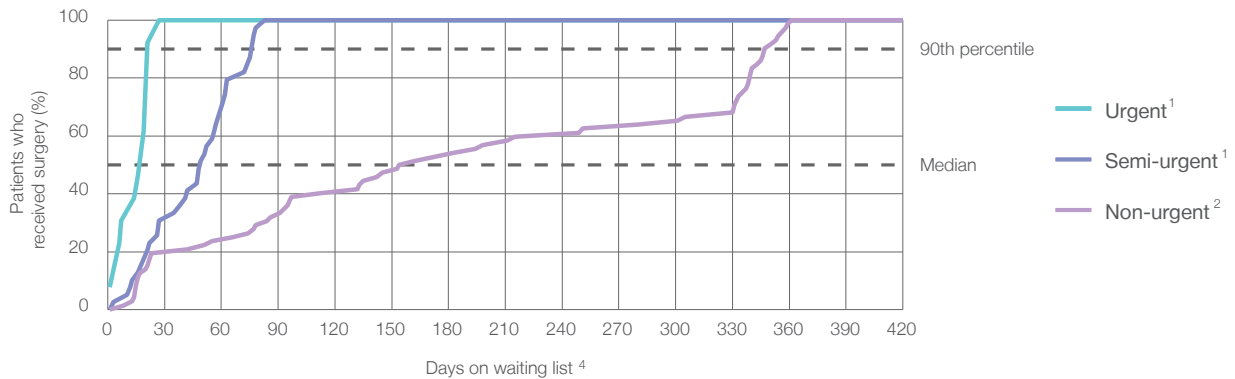
Cowra District Hospital: Time waited to receive elective surgery

April to June 2017

Percentage of patients who received surgery within the clinically recommended timeframe

	Recommended:	100%	Same period last year	Peer group (this period)
1 Urgent ¹	30 days	100%	100%	99.8%
2 Semi-urgent ¹	90 days	100%	100%	99.8%
3 Non-urgent ²	365 days	100%	100%	99.3%

Percentage of patients who received elective surgery by waiting time (days)



Waiting time (days) for people who received surgery by urgency category

	Peer group (this period)	This hospital (same period last year)	Peer group (same period last year)
1 Urgent: ¹ 13 patients			
Median time to receive surgery	13 days	13	14
90th percentile time to receive surgery	*	27	26
2 Semi-urgent: ¹ 39 patients			
Median time to receive surgery	49 days	39	55
90th percentile time to receive surgery	*	77	72
3 Non-urgent: ² 72 patients			
Median time to receive surgery	158 days	174	193
90th percentile time to receive surgery	*	327	322

Cowra District Hospital: Time waited to receive elective surgery

April to June 2017

Median ⁵ waiting time (days) for patients who received elective surgery by specialty of surgeon		Same period last year	Peer group (this period)
Cardiothoracic surgery	n/a (0 patients)	n/a	n/a
Ear, nose and throat surgery	142 days (21 patients)	55	127
General surgery	27 days (62 patients)	35	36
Gynaecology	45 days (11 patients)	60	32
Medical	n/a (0 patients)	n/a	49
Neurosurgery	n/a (0 patients)	n/a	n/a
Ophthalmology	337 days (31 patients)	342	183
Orthopaedic surgery	n/a (0 patients)	n/a	114
Plastic surgery	n/a (0 patients)	n/a	n/a
Urology	n/a (0 patients)	n/a	33
Vascular surgery	n/a (0 patients)	n/a	191

Median ⁵ waiting time (days) for patients who received elective surgery by common procedures ⁷		Same period last year	Peer group (this period)
Abdominal hysterectomy	* (< 5 patients)	*	43
Cataract extraction	337 days (31 patients)	342	193
Cholecystectomy	* (< 5 patients)	n/a	57
Coronary artery bypass graft	n/a (0 patients)	n/a	n/a
Cystoscopy	* (< 5 patients)	n/a	21
Haemorrhoidectomy	n/a (0 patients)	n/a	*
Hysteroscopy	* (< 5 patients)	*	28
Inguinal herniorrhaphy	* (6 patients)	*	64
Myringoplasty / Tympanoplasty	n/a (0 patients)	n/a	*
Myringotomy	n/a (0 patients)	n/a	*
Other - General	n/a (0 patients)	*	29
Prostatectomy	n/a (0 patients)	n/a	80
Septoplasty	n/a (0 patients)	n/a	312
Tonsillectomy	162 days (11 patients)	*	154
Total hip replacement	n/a (0 patients)	n/a	n/a
Total knee replacement	n/a (0 patients)	n/a	n/a
Varicose veins stripping and ligation	n/a (0 patients)	*	198

Cowra District Hospital: Elective surgery waiting list

April to June 2017

Patients ready for surgery on waiting list at start of quarter: 170 patients

Patients ready for surgery on waiting list at end of quarter: 186 patients

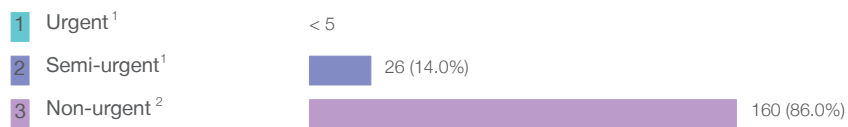
Patients not ready for surgery⁸ on waiting list at end of quarter: 13 patients

	Same period last year	Change since one year ago
Patients ready for surgery on waiting list at start of quarter	187	-9.1%
Patients ready for surgery on waiting list at end of quarter	176	5.7%
Patients not ready for surgery ⁸ on waiting list at end of quarter	5	160.0%

Cowra District Hospital: Patients ready for elective surgery

as at 30th June 2017

Patients ready for surgery on waiting list by urgency category: 186 patients



	Same period last year	Change since one year ago
Urgent ¹	0	*
Semi-urgent ¹	23	0.0%
Non-urgent ²	153	4.6%

Cowra District Hospital: Patients ready for elective surgery

as at 30th June 2017

Patients ready for elective surgery by specialty of surgeon: 186 patients

	As at 30 Jun 2017	Same time last year	Change since one year ago
All specialties	186	176	5.7%
Cardiothoracic surgery	0	0	n/a
Ear, nose and throat surgery	42	27	55.6%
General surgery	48	36	33.3%
Gynaecology	< 5	12	*
Medical	0	0	n/a
Neurosurgery	0	0	n/a
Ophthalmology	95	101	-5.9%
Orthopaedic surgery	0	0	n/a
Plastic surgery	0	0	n/a
Urology	0	0	n/a
Vascular surgery	0	0	n/a

Patients ready for elective surgery for common procedures ⁷

	As at 30 Jun 2017	Same time last year	Change since one year ago
Abdominal hysterectomy	< 5	< 5	*
Cataract extraction	94	101	-6.9%
Cholecystectomy	0	< 5	*
Coronary artery bypass graft	0	< 5	n/a
Cystoscopy	0	< 5	*
Haemorrhoidectomy	0	< 5	n/a
Hysteroscopy	0	< 5	*
Inguinal herniorrhaphy	< 5	6	*
Myringoplasty / Tympanoplasty	0	< 5	n/a
Myringotomy	0	< 5	n/a
Other - General	< 5	< 5	n/a
Prostatectomy	0	< 5	n/a
Septoplasty	0	< 5	n/a
Tonsillectomy	28	18	55.6%
Total hip replacement	0	< 5	n/a
Total knee replacement	0	< 5	n/a
Varicose veins stripping and ligation	< 5	< 5	*

Cowra District Hospital: Patients ready for elective surgery
as at 30th June 2017

Patients ready for elective surgery, on the waiting list for longer than 12 months

	As at 30 Jun 2017	Same time last year
All specialties	0	0

* Suppressed due to small numbers and to protect privacy. Relevant graphs are also suppressed.

< 5 Less than five patients. For measures by urgency category, counts are included in an adjacent category. Relevant graphs are also suppressed.

1. Excluding staged procedures.
2. Excluding staged procedures and cystoscopy.
3. Including non-urgent cystoscopy.
4. Excludes the total number of days the patient was coded as 'not ready for surgery'.
5. This is the number of days it took for half of patients who received elective surgery during the period to be admitted and receive their surgery. The other half took equal to or longer than the median to be admitted for surgery.
6. This is the number of days it took for 90% of patients who received elective surgery during the period to be admitted and receive their surgery. The final 10% of patients took equal to or longer than the 90th percentile.
7. The procedures included in this list are procedures which are high volume; some may be associated with long waiting periods. For a description of these procedures see *Elective Surgery Glossary of Common Procedures, December 2012*.
8. Includes staged procedures, non-urgent cystoscopy, and patients currently not available for personal reasons.

For more information: For details of methods, see the *Technical Supplement: Elective surgery measures, July to September 2016*.

Note: All percentages rounded to whole numbers and therefore percentages may not add to 100%.

Source: Waiting List Collection On-Line System, NSW Health (extracted 18 July 2017.).