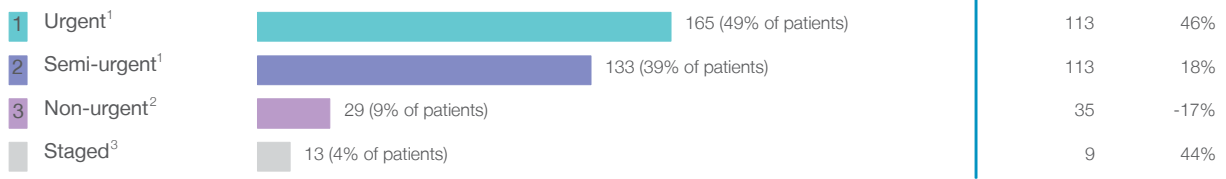


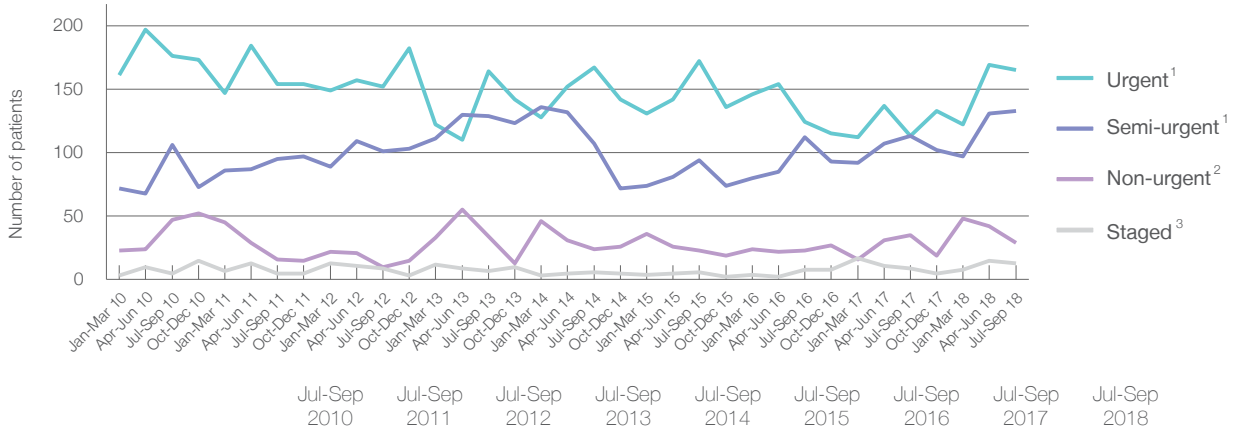
Calvary Mater Newcastle: Elective surgery performed

July to September 2018

Patients who received elective surgery by urgency category: 340 patients



Patients who received elective surgery by urgency category by quarter, July 2013 to September 2018



Urgency Category	Jul-Sep 2010	Jul-Sep 2011	Jul-Sep 2012	Jul-Sep 2013	Jul-Sep 2014	Jul-Sep 2015	Jul-Sep 2016	Jul-Sep 2017	Jul-Sep 2018
All categories	334	270	272	334	304	295	267	270	340
Urgent ¹	176	154	152	164	167	172	124	113	165
Semi-urgent ¹	106	95	101	129	107	94	112	113	133
Non-urgent ²	47	16	10	34	24	23	23	35	29
Staged ³	5	5	9	7	6	6	8	9	13

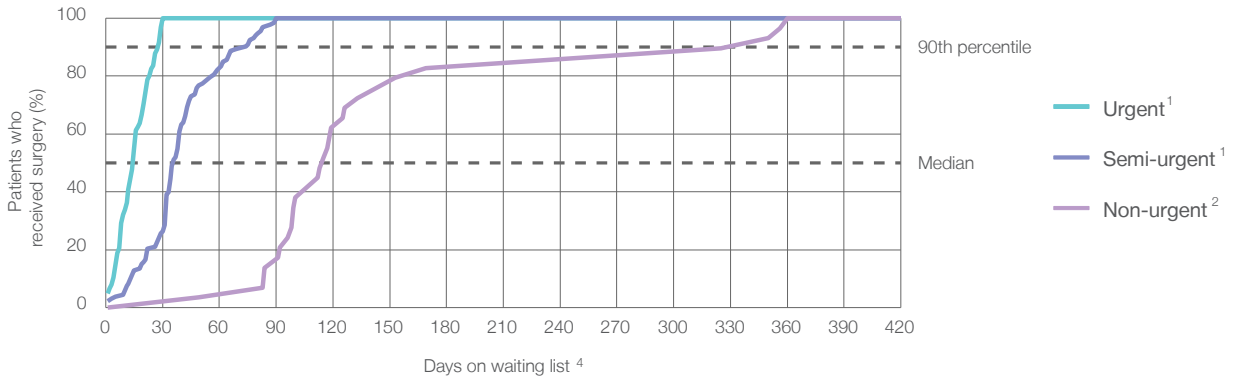
Calvary Mater Newcastle: Time waited to receive elective surgery

July to September 2018

Percentage of patients who received surgery within the clinically recommended timeframe

Urgency Category	Recommended Timeframe	Percentage	Same period last year	Peer group (this period)
1 Urgent ¹	Recommended: 30 days	100%	100%	100%
2 Semi-urgent ¹	Recommended: 90 days	100%	100%	99.9%
3 Non-urgent ²	Recommended: 365 days	100%	100%	100%

Percentage of patients who received elective surgery by waiting time (days)



Waiting time (days) for people who received surgery by urgency category

Urgency Category	Median time to receive surgery	90th percentile time to receive surgery	Peer group (this period)	This hospital (same period last year)	Peer group (same period last year)
1 Urgent: ¹ 165 patients	15 days	28 days	12	13	8
2 Semi-urgent: ¹ 133 patients	36 days	74 days	43	46	42
3 Non-urgent: ² 29 patients	115 days	*	280	131	267
			355	*	357

Calvary Mater Newcastle: Time waited to receive elective surgery

July to September 2018

Median ⁵ waiting time (days) for patients who received elective surgery by specialty of surgeon		Same period last year	Peer group (this period)
Cardiothoracic surgery	* (< 5 patients)	*	*
Ear, nose and throat surgery	n/a (0 patients)	n/a	333
General surgery	22 days (298 patients)	25	22
Gynaecology	91 days (15 patients)	*	34
Medical	10 days (10 patients)	*	7
Neurosurgery	n/a (0 patients)	n/a	n/a
Ophthalmology	n/a (0 patients)	n/a	119
Orthopaedic surgery	n/a (0 patients)	n/a	97
Plastic surgery	61 days (16 patients)	20	61
Urology	n/a (0 patients)	n/a	n/a
Vascular surgery	n/a (0 patients)	n/a	n/a

Median ⁵ waiting time (days) for patients who received elective surgery by common procedures ⁷		Same period last year	Peer group (this period)
Abdominal hysterectomy	n/a (0 patients)	n/a	13
Cataract extraction	n/a (0 patients)	n/a	288
Cholecystectomy	49 days (22 patients)	70	49
Coronary artery bypass graft	n/a (0 patients)	n/a	n/a
Cystoscopy	n/a (0 patients)	n/a	*
Haemorrhoidectomy	* (< 5 patients)	n/a	*
Hysteroscopy	* (< 5 patients)	*	40
Inguinal herniorrhaphy	87 days (15 patients)	82	87
Myringoplasty / Tympanoplasty	n/a (0 patients)	n/a	n/a
Myringotomy	n/a (0 patients)	n/a	n/a
Other - General	15 days (30 patients)	21	15
Prostatectomy	n/a (0 patients)	n/a	n/a
Septoplasty	n/a (0 patients)	n/a	332
Tonsillectomy	n/a (0 patients)	n/a	*
Total hip replacement	n/a (0 patients)	n/a	n/a
Total knee replacement	n/a (0 patients)	n/a	n/a
Varicose veins stripping and ligation	n/a (0 patients)	n/a	n/a

Calvary Mater Newcastle: Elective surgery waiting list

July to September 2018

Patients ready for surgery on waiting list at start of quarter: 170 patients

Patients ready for surgery on waiting list at end of quarter: 174 patients

Patients not ready for surgery⁸ on waiting list at end of quarter: 40 patients

	Same period last year	Change since one year ago
Patients ready for surgery on waiting list at start of quarter	140	21%
Patients ready for surgery on waiting list at end of quarter	131	33%
Patients not ready for surgery ⁸ on waiting list at end of quarter	38	5%

Calvary Mater Newcastle: Patients ready for elective surgery

as at 30th September 2018

Patients ready for surgery on waiting list by urgency category: 174 patients



	Same period last year	Change since one year ago
Urgent ¹	21	67%
Semi-urgent ¹	66	-27%
Non-urgent ²	44	107%

Calvary Mater Newcastle: Patients ready for elective surgery as at 30th September 2018

Patients ready for elective surgery by specialty of surgeon: 174 patients

	As at 30 Sep 2018	Same time last year	Change since one year ago
All specialties	174	131	33%
Cardiothoracic surgery	0	5	-100%
Ear, nose and throat surgery	0	0	n/a
General surgery	139	115	21%
Gynaecology	7	< 5	*
Medical	< 5	< 5	*
Neurosurgery	0	0	n/a
Ophthalmology	0	0	n/a
Orthopaedic surgery	0	0	n/a
Plastic surgery	26	9	189%
Urology	0	0	n/a
Vascular surgery	0	0	n/a

Patients ready for elective surgery for common procedures ⁷

	As at 30 Sep 2018	Same time last year	Change since one year ago
Abdominal hysterectomy	< 5	< 5	n/a
Cataract extraction	0	< 5	n/a
Cholecystectomy	27	22	23%
Coronary artery bypass graft	0	< 5	n/a
Cystoscopy	0	< 5	n/a
Haemorrhoidectomy	< 5	< 5	*
Hysteroscopy	0	< 5	n/a
Inguinal herniorrhaphy	23	20	15%
Myringoplasty / Tympanoplasty	0	< 5	n/a
Myringotomy	0	< 5	n/a
Other - General	12	8	50%
Prostatectomy	0	< 5	n/a
Septoplasty	0	< 5	n/a
Tonsillectomy	0	< 5	n/a
Total hip replacement	0	< 5	n/a
Total knee replacement	0	< 5	n/a
Varicose veins stripping and ligation	0	< 5	n/a

Calvary Mater Newcastle: Patients ready for elective surgery as at 30th September 2018

Patients ready for elective surgery, on the waiting list for longer than 12 months

As at 30 Sep 2018 Same time last year

	As at 30 Sep 2018	Same time last year
All specialties	0	0

* Suppressed due to small numbers and to protect privacy. Relevant graphs are also suppressed.

< 5 Less than five patients. For measures by urgency category, counts are included in an adjacent category. Relevant graphs are also suppressed.

1. Excluding staged procedures.
2. Excluding staged procedures and cystoscopy.
3. Including non-urgent cystoscopy.
4. Excludes the total number of days the patient was coded as 'not ready for surgery'.
5. This is the number of days it took for half of patients who received elective surgery during the period to be admitted and receive their surgery. The other half took equal to or longer than the median to be admitted for surgery.
6. This is the number of days it took for 90% of patients who received elective surgery during the period to be admitted and receive their surgery. The final 10% of patients took equal to or longer than the 90th percentile.
7. The procedures included in this list are procedures which are high volume; some may be associated with long waiting periods. For a description of these procedures see *Elective Surgery Glossary of Common Procedures, December 2012*.
8. Includes staged procedures, non-urgent cystoscopy, and patients currently not available for personal reasons.

For more information: For details of methods, see the *Technical Supplement: Elective surgery measures, January to March 2018*.

Note: All percentages rounded to whole numbers and therefore percentages may not add to 100%.

Source: Waiting List Collection On-Line System, NSW Health (extracted 12 October 2018.).