

Elective Surgery

Hospital Quarterly:

Performance of
NSW public hospitals

January to March 2011

Elective, or planned, surgery is surgery that a patient's doctor considers necessary but that can be delayed by at least 24 hours. Hip replacement, cataract extraction and ligament repairs are all examples of elective surgery.

More elective surgery was completed during the January to March 2011 quarter than at the same time one and two years ago. This increase was spread across all urgency categories but was much greater for patients from the non-urgent group (category 3). Most patients (90%) continued to receive their surgery on time, similar to the same quarter last year (86%).

The median* waiting time remains similar for patients needing urgent and semi-urgent surgical procedures (11 and 50 days respectively)

compared with wait times for the same period last year. It has, however, increased for non-urgent surgery patients (217 days, up from 207 days last year and 149 days in 2009).

This issue of *Hospital Quarterly* changes the way patients undergoing 'staged' surgery contribute to hospital and state measures of surgical performance. Staged surgery cannot be completed before a certain date, usually for medical reasons. The Bureau has made this adjustment to promote fairer comparisons between hospitals.

This is one of three *Hospital Quarterly* modules. For the Emergency Departments and Admitted Patients modules visit www.bhi.nsw.gov.au

Find out how **your local hospital**

PERFORMS

Results for more than
80 NSW hospitals
available at

www.bhi.nsw.gov.au

From January to March 2011...	For the same period last year...	The difference...
46,498 elective surgical procedures were performed	45,603 procedures	895 (+2%)
3,548 of these procedures were 'staged procedures'	3,846 procedures	-298 (-8%)
The percentage of elective surgery patients treated on time was 90%	86%	4 percentage point increase
The median* waiting time for 'urgent' surgery was 11 days	9 days	+2 days (+22%)
The median* waiting time for 'semi-urgent' surgery was 50 days	54 days	-4 days (-7%)
The median* waiting time for 'non-urgent' surgery was 217 days	207 days	+10 days (+5%)

* Median waiting time: time for half of all patients to receive treatment. Excludes staged procedures and non-urgent cystoscopy.

A new approach to elective surgery reporting

If a person and their surgeon believe surgery is required but can be delayed by at least 24 hours, the patient is 'referred' for their procedure and placed on a waiting list.

At the time of referral, a patient's surgeon assigns them to one of three urgency categories. Each category has its own target, which specifies the desired maximum time (in days) the patient should wait for their procedure. These are outlined in the box below.

Explaining staged procedures

Patients can also be added to the surgery booking system for what is called a 'staged' procedure. These patients may, or may not, be categorised as urgent, semi-urgent or non-urgent when placed on the waiting list.

Urgency categories: Elective surgery guidelines	
Category 1 Urgent	Admission within 30 days desirable for a condition that has the potential to deteriorate quickly and become an emergency
Category 2 Semi-urgent	Admission within 90 days desirable for a condition not likely to deteriorate quickly
Category 3 Non-urgent	Admission within 365 days acceptable for a condition unlikely to deteriorate quickly

Staged procedures are required when a clinically appropriate time interval is advisable before a patient can have their surgery.

Examples of staged procedures include: waiting for a broken bone to heal before removing pins or plates; the time needed for hormone therapy to work before egg-harvesting takes place during

in-vitro fertilisation (IVF); and certain invasive diagnostic procedures (such as cystoscopy) that sometimes need to be conducted at set intervals.

Cystoscopy is where a surgeon inserts a tube containing a small camera into the urinary tract to see inside the urethra and bladder. The surgeon would consider cystoscopy a staged procedure if they were using it at intervals to assess how a person with bladder cancer, for example, was responding to treatment.

Not all cystoscopies are staged procedures. They can also be performed to investigate symptoms such as incontinence and frequent bladder and urinary tract infections. These cases, would not be considered staged.

Clinical judgement

There are other surgical procedures that, like cystoscopy, could be considered either staged or not staged. Surgeons use clinical judgement to decide how these procedures are categorised.

Because patients cannot, or should not, have their staged procedure before the prescribed date, they are not considered to be 'waiting for care' unless they wait beyond that date. Historically, however, wait time measurement for completed elective surgery has included patients booked for staged procedures. This can have the effect of reducing the reported median waiting time at a hospital without reducing the number of days patients actually waited for their surgery.

Patients requiring staged procedures or non-urgent cystoscopy represent a large proportion of elective surgery patients at some hospitals. Including these patients can have a substantial effect on the median waiting time at these hospitals.

Differences across hospitals

In NSW there are guidelines about how to enter staged patients into the booking system, when to record them as being ready for care, and how to record their surgery.

The Bureau has learnt that people who manage the elective surgery booking system in the state's public hospitals are interpreting these guidelines differently. Hospitals also vary in the way they record cystoscopy patients; some are coded as being booked for staged procedures, some are recorded as category 3 patients, and others attend as outpatients.

This highlights differing hospital practice rather than error but its effect is substantial in that reported wait times vary for staged patients, depending on which hospital they attend.

As a result, the Bureau has taken a new approach to reporting on patients who received staged surgery and non-urgent cystoscopy in order to promote fairer hospital comparisons.

What we did

When reporting on the number of procedures completed, we now present four elective surgery categories rather than three. These are: urgent; semi-urgent; non-urgent; and staged.

This fourth category is an umbrella term that covers both staged patients and non-urgent cystoscopy for the reasons already described (Figure 1, next page). It removes these patients from the elective surgery urgency categories so hospitals can be more accurately compared with each other.

When reporting whether patients are seen on time and how long they waited, we now present two sets of numbers for non-urgent (category 3) surgery (Figures 3, 4).

One set of figures uses what we call 'the new method', which **excludes** staged procedures and non-urgent staged cystoscopy. During January to March, there were more than 3,500 of these procedures. The other set of figures, using what we call the 'historic method', **includes** the staged and non-urgent cystoscopy group.

The effect

For some hospitals, the median wait time reported for January to March using the new method is longer than using the historic method – in some cases this is in excess of 100 days. This does not mean patients **actually** waited 100 days longer for their surgery. Rather, it means their **reported** median wait time has changed.

Independent of this change in method, non-urgent surgery median wait time has increased at a state level since last quarter and the same time last year (Figure 4). To accurately interpret changes in hospital wait-time performance, it is important to compare across time **within** categories, not between new and historic methods.

The Bureau is committed to providing clarity on surgical waiting times in NSW. For more information on staged surgery, [see page 10](#). Further detail on our methodology around these new calculations can be found in the addendum *Technical Supplement: Elective surgery measures, January to March 2011* available at www.bhi.nsw.gov.au

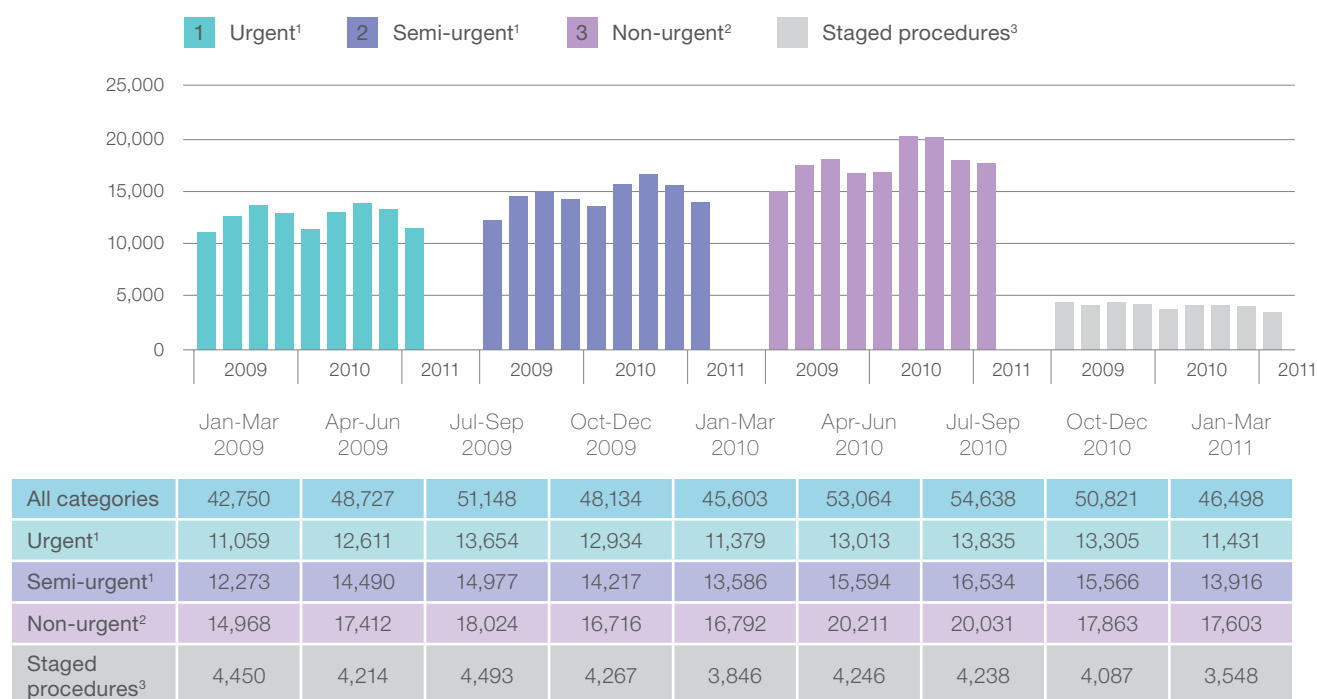
All surgical data presented in this report are based upon the data contained in the Waiting List Collection On-line System (WLCOS).

Number of elective surgery procedures performed

During January to March 2011, the Waiting List Collection On-line System (WLCOS) recorded that 46,498 elective surgery procedures were completed in NSW. This is 9% lower than the 50,821 conducted in the previous quarter (in line with the usual seasonal pattern) and up 2% from the 45,603 surgical procedures completed in the same quarter last year (Figure 1).

Each year, there is a strong seasonal effect on the number of elective surgery procedures performed in NSW. The number of procedures falls sharply across all urgency categories in December and, to a greater extent, January. The results presented here for January to March 2011 exclude staged patients and non-urgent cystoscopy unless otherwise stated (Figure 2a, Figure 2b, page 6).

Figure 1: Total number of elective surgery procedures conducted, by urgency category, January 2009 to March 2011



1. Excluding staged procedures.
2. Excluding staged procedures and non-urgent cystoscopy.
3. Including non-urgent cystoscopy.

Note: Patients recorded as 'deferred' when they received their surgery are allocated to 'ready for care' urgency categories as appropriate.

Note: Because of changes in methods and reporting, numbers of surgical procedures by urgency category will differ from those reported in previous *Hospital Quarterly* reports and in the NSW Department of Health's *Quarterly Hospital Performance Report*. Total surgical procedures may differ slightly due to differences in when data were extracted.

Source: Waiting List Collection On-line System, NSW Health. Data extracted for the January to March 2011 quarter on 18 April 2011. Data extracted for all previous quarters on 15 April 2011.

Urgent surgery (category 1): There were 11,431 procedures completed, compared with 11,379 at the same time in 2010 (less than 1% increase). Urgent procedures made up 25% of all completed elective surgery in WLCOS.

Semi-urgent surgery (category 2): There were 13,916 semi-urgent procedures completed, compared with 13,586 in the same quarter of 2010 (an increase of 2%). Semi-urgent procedures made up 30% of all completed elective surgery.

Non-urgent surgery (category 3): There were 17,603 procedures completed, compared with 16,792 in 2010 (an increase of 5%). Non-urgent procedures made up 38% of all completed elective surgery.

Staged surgery: There were 3,548 procedures, compared with 3,846 in 2010 (a decrease of 8%). Staged procedures made up 8% of all completed elective surgery.

A five-year examination of elective surgery admissions each February (the middle month of the quarter covered by this report) reveals the following patterns since January 2006:

- The number of urgent procedures has decreased from 6,376 to 4,142 (down 35%)
- Semi-urgent procedure numbers are largely unchanged from 5,368 to 5,469 (up 2%)
- Non-urgent procedures have increased from 4,387 to 6,819 (up 55%)
- The number of staged surgical procedures (including non-urgent cystoscopy) has increased from 976 to 1,343 (up 38%).

These changes have caused a shift in the composition of surgical procedures by urgency category over the past five years (**Figure 2a, next page**), and most of this shift occurred during 2008 and early 2009.

For example, urgent surgery (excluding staged procedures) has decreased from 37% of all surgical procedures to 23% over five years. In the same period, non-urgent surgery has increased from 26% of all surgical procedures to 38%, and staged procedures increased from 6% to 8%.

In April 2006, the NSW Department of Health released the first in an ongoing series of documents to improve the consistency of how surgeons assign urgency categories for procedures.

See the **Appendices** section of this report (**pages 12 to 23**) for more detailed performance information about each public hospital providing elective surgery in NSW. This includes Hawkesbury Private Hospital, which is contracted to supply surgery for public patients.

Want more quarterly performance information for more than 80 NSW hospitals?
Visit www.bhi.nsw.gov.au
for information on how **wait times, on-time performance and number of procedures have changed over time.**

Figure 2a: Patients who received elective surgery, by urgency category, by month, January 2006 to March 2011

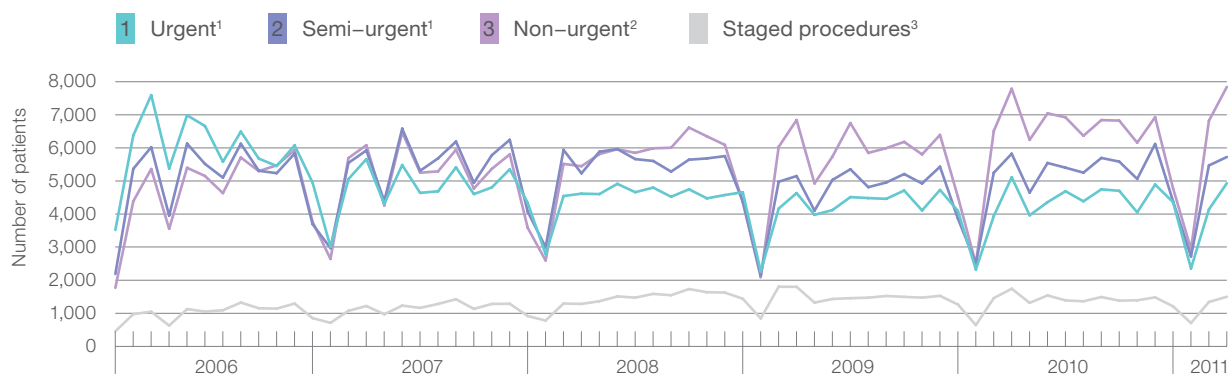
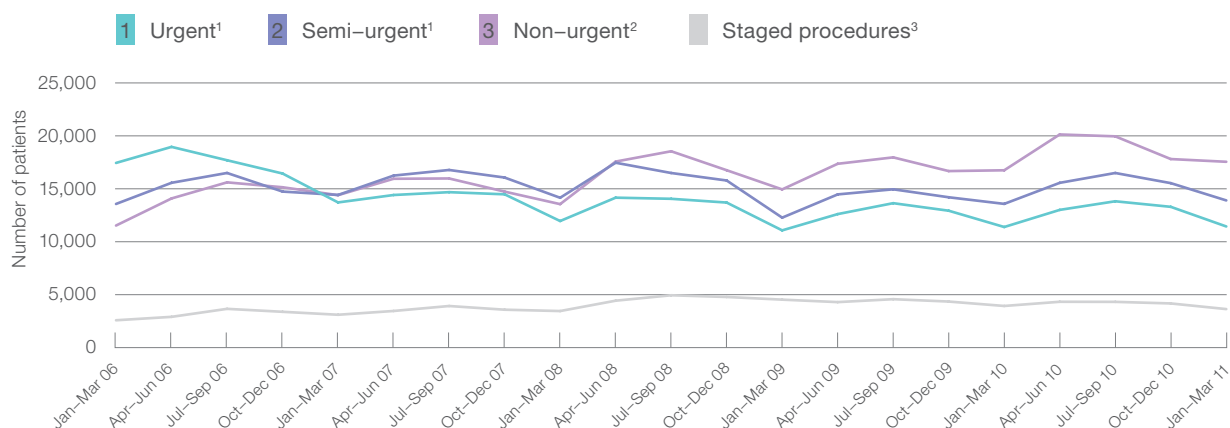


Figure 2b: Patients who received elective surgery, by urgency category, by quarter, January 2006 to March 2011



1. Excluding staged procedures.

2. Excluding staged procedures and non-urgent cystoscopy.

3. Including non-urgent cystoscopy.

Note: Patients recorded as 'deferred' when they received their surgery are allocated to 'ready for care' urgency categories as appropriate.

Note: Because of changes in methods and reporting, numbers of surgical procedures by urgency category will differ from those reported in previous *Hospital Quarterly* reports and in the NSW Department of Health's *Quarterly Hospital Performance Report*. Total surgical procedures may differ slightly due to differences in when data were extracted.

Source: Waiting List Collection On-line System, NSW Health. Data extracted for the January to March 2011 quarter on 18 April 2011. Data extracted for all previous quarters on 15 April 2011.

Hospital Quarterly reports on the activity and performance of hospitals that have provided elective surgery. Information about patients who are still on the waiting list is published by the NSW Department of Health and can be found at www.health.nsw.gov.au/reports/reports.asp

Patients admitted on time for elective surgery

In the January to March 2011 quarter, 90% of all patients who were admitted to a public hospital for elective surgery were admitted within the time frame their surgeon recommended (Figure 3). This is comparable to the preceding two quarters (both 91%) but higher than January to March 2010 (86%).

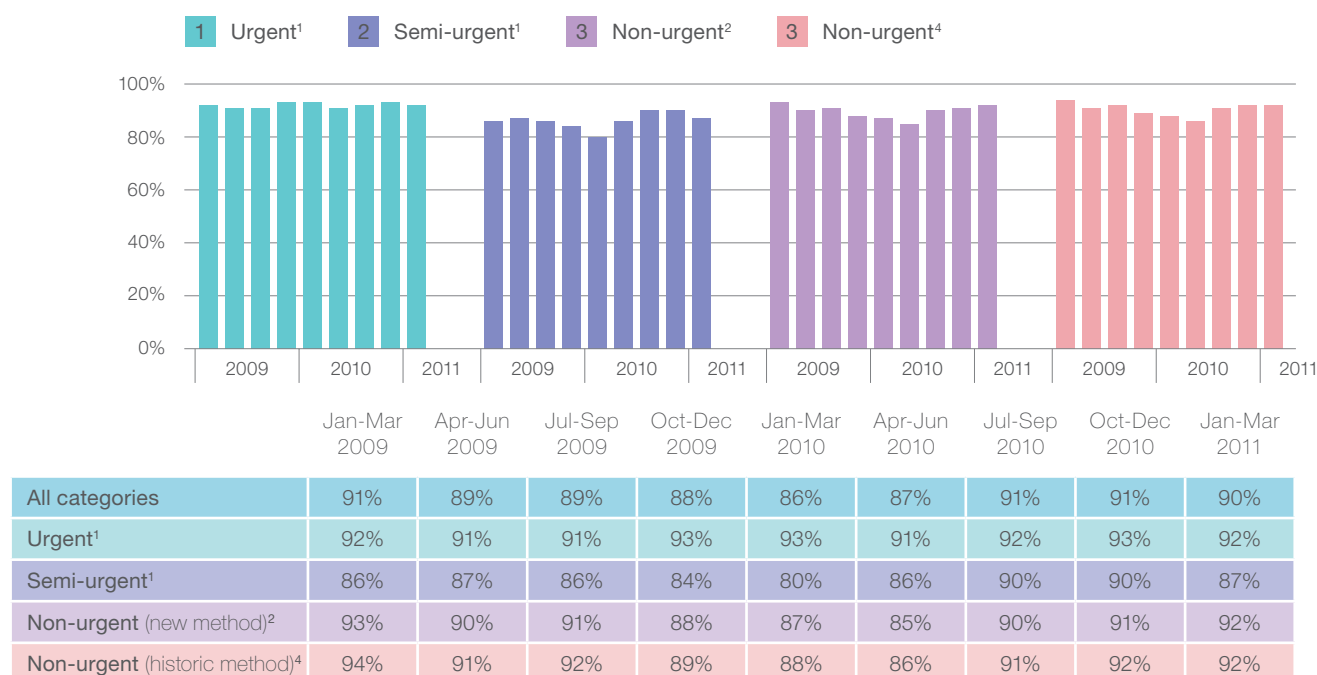
The results for January to March 2011 presented here exclude staged patients and non-urgent cystoscopy procedures unless otherwise stated. Excluding these surgery patients leaves on-time performance largely unaffected.

Urgent surgery: 92% of patients were admitted within the recommended 30 days, a result largely unchanged over the past two years.

Semi-urgent surgery: 87% of patients were admitted within 90 days. This is down on the preceding quarter (90%) but considerably higher than the same quarter in 2010 (80%).

Non-urgent surgery: 92% of patients were admitted within 365 days, similar to last quarter (91%) but higher than the 2010 quarter (87%).

Figure 3: Percentage of elective surgery patients treated within recommended waiting time, by urgency category, January 2009 to March 2011



1. Excluding staged procedures.

2. Excluding staged procedures and non-urgent cystoscopy.

4. Including staged procedures and non-urgent cystoscopy.

Note: Patients recorded as 'deferred' when they received their surgery are allocated to 'ready for care' urgency categories as appropriate.

Note: Because staged patients are now reported separately, on-time performance by urgency category will differ from those reported in previous *Hospital Quarterly* reports and in the NSW Department of Health's *Quarterly Hospital Performance Report*.

Source: Waiting List Collection On-line System, NSW Health. Data extracted for the January to March 2011 quarter on 18 April 2011. Data extracted for all previous quarters on 15 April 2011.

Median wait times for elective surgery

Median wait time is the number of days it took for half the patients admitted for surgery during January to March 2011 to receive their surgery. The other half took longer than the median.

The results for January to March 2011 are presented here and in [Figure 4](#) using both new and historic methods of calculating wait times.

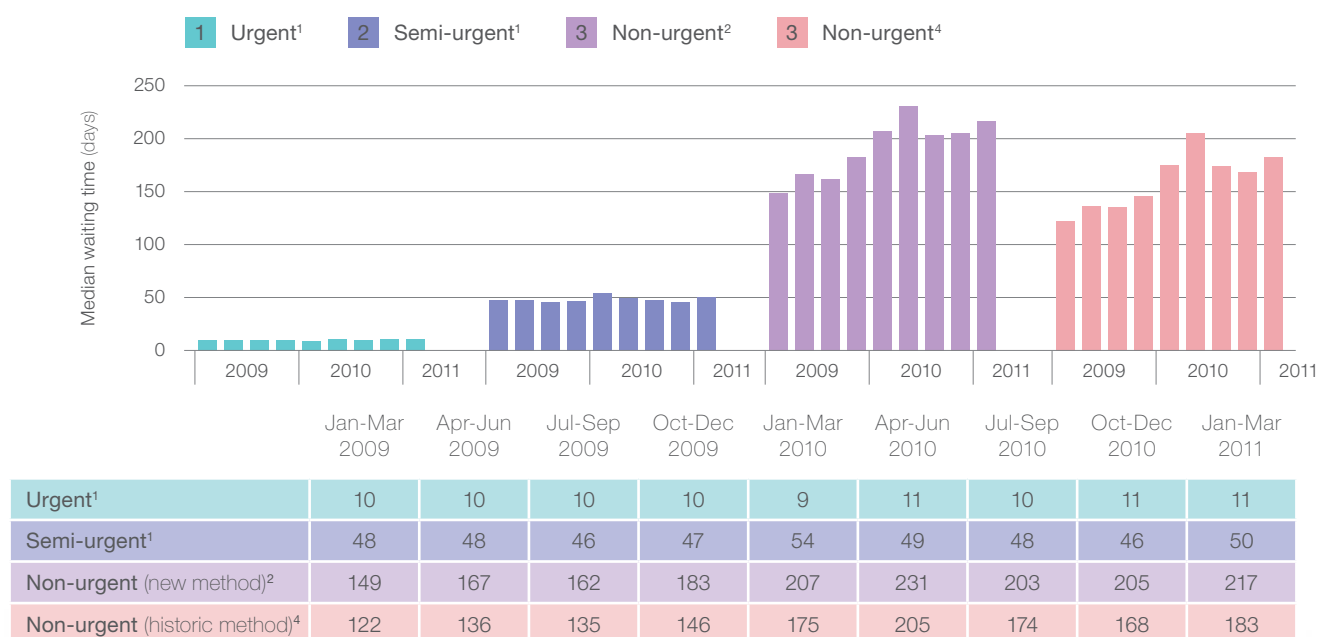
Urgent surgery: The median wait was 11 days – largely unchanged over the past two years, except in 2010 when the median wait time during the quarter was nine days.

Semi-urgent surgery: The median wait time for this category was 50 days – similar to the preceding two years.

Non-urgent surgery: The median wait time for this category was 217 days – similar to the same quarter in 2010 (207 days).

Median wait time performance results in this urgency category have been the most volatile, increasing from 149 days during the same quarter in 2009 and peaking at 231 days in April to June 2010.

Figure 4: NSW elective surgery median waiting time (days), by urgency category, January 2009 to March 2011



1. Excluding staged procedures.

2. Excluding staged procedures and non-urgent cystoscopy.

4. Including staged procedures and non-urgent cystoscopy.

Note: Patients recorded as 'deferred' when they received their surgery are allocated to 'ready for care' urgency categories as appropriate.

Note: Because staged patients are now reported separately, median waiting time by urgency category will differ from those reported in previous *Hospital Quarterly* reports and in the NSW Department of Health's *Quarterly Hospital Performance Report*.

Source: Waiting List Collection On-line System, NSW Health. Data extracted for the January to March 2011 quarter on 18 April 2011. Data extracted for all previous quarters on 15 April 2011.

The effect of the new method on non-urgent median wait times has been to increase the quarterly medians over the past two years by approximately 30 days. Because patient composition at each hospital differs, this effect is much greater at some hospitals than others and can be viewed in the *Technical Supplement*.

Cumulative wait time

Greater detail on how long people waited to be admitted for their elective surgery during January to March 2011 is presented in [Figure 5](#).

The graph's slope indicates the rate at which patients were admitted for care. A steep slope demonstrates a high percentage of patients being admitted for their surgery over the period shown. A flat slope shows relatively fewer patients receiving surgery over the period.

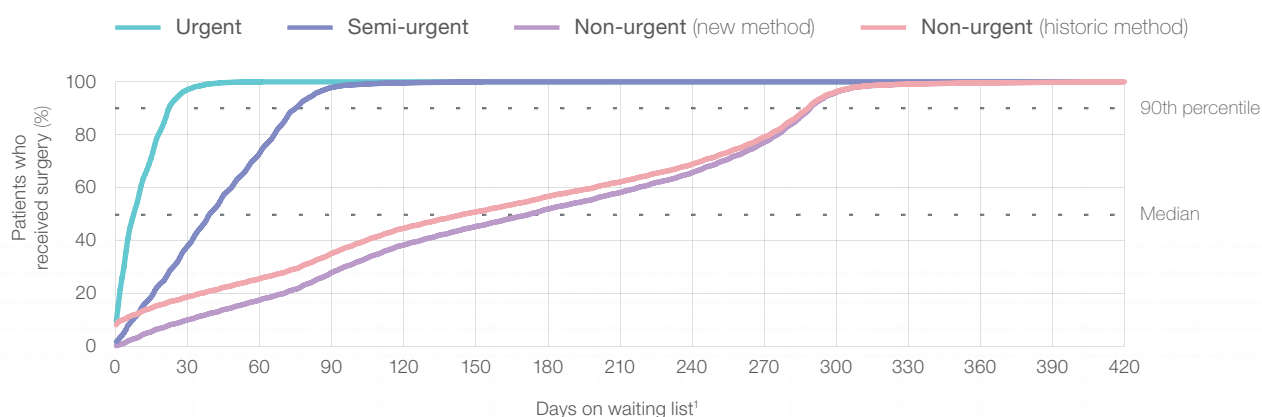
The waiting time for patients who had urgent, semi-urgent and non-urgent procedures is presented in [Figure 5](#).

In the past, most staged procedures were classified as non-urgent surgery. Therefore, the waiting time below is presented for non-urgent surgery using both the Bureau's new calculation method (excluding staged patients and non-urgent cystoscopy) and the historic method of measuring waiting times (including staged and cystoscopy).

The effect of excluding these patients from the non-urgent category is to increase the non-urgent reported median waiting time across the state from 183 to 217 days for January to March 2011. Importantly, this does not mean patients across NSW *actually* waited 34 more days for their surgery. Rather, it means their *reported* median waiting time has changed.

This new approach to measurement is required to support fairer comparisons between public hospitals in NSW. Further detail on our rationale can be found on [pages 2 and 10](#) of this module, and in the addendum *Technical Supplement: Elective surgery measures, January to March 2011*.

Figure 5: Cumulative percentage of patients who received elective surgery, by waiting time (days), January to March 2011



1. Excludes the total number of days the patient was coded as 'not ready for care'.

Source: Waiting List Collection On-line System, NSW Health. Data extracted on 18 April 2011.

Staged surgery: a matter of definition

There are times when surgery is deemed necessary but should not, or cannot, take place until a clinically appropriate time interval has passed. This is called staged surgery and is an essential concept in managing elective surgery. It allows surgeons to place patients on the surgery booking system but prevents them from being admitted to hospital too soon.

Examples of staged procedures include:

Removal of pins / plates

Fractured bones can require metal pins and / or plates to hold them in place while they heal. Until the bone is healed, the pins / plates are not removed and the patient is coded 'not ready for care'.

In-vitro fertilisation (IVF)

Hormone therapy can be required before egg harvesting. A woman would be listed as 'not ready for care' while she underwent the hormone therapy in preparation for the procedure.

Cystoscopy

A small camera is used to investigate the urinary tract and bladder. Cystoscopy can be required for several reasons and can be classified as either staged or not staged, depending on the reason for the test. It is often used following radiotherapy for bladder cancer to assess at intervals how the cancer responded to treatment. When used in this context, it is one of the most common staged surgery procedures.

Hospital variations

A Bureau analysis begun in November 2010 shows hospitals record staged procedures on the elective surgery wait list very differently.

A staged surgery patient is not waiting for care (unless they wait beyond the date scheduled for their procedure). Therefore, grouping staged procedures (that have a low recorded wait time) into any of the elective surgery urgency categories reduces the median wait time measurement without affecting how long patients actually wait for care.

The variation in how staged patients are recorded makes it difficult to accurately compare hospitals. In addition, hospital staff who manage the surgery booking system have different interpretations of NSW guidelines about when to record staged surgery patients as being ready for care. This means that staged patients receiving care at different hospitals will have different recorded wait times.

Comparisons between hospitals with high and low rates of staged procedures or different ways of recording cystoscopy may result in unfair or inequitable comparisons.

As a result of our analysis, the Bureau has applied the following rules to create a level playing field for hospitals:

- All procedures the Bureau deems staged have been removed from urgent, semi-urgent and non-urgent surgery categories
- Median wait time and on-time performance figures for non-urgent surgery are presented using the new method (*excluding* cystoscopy and staged procedures) and the historic method, which *includes* them
- Median wait time and on-time performance figures for urgent and semi-urgent surgery categories are presented with the new method because results are not different than with the historic method
- Data from all previous quarters have been recalculated using the new method so accurate comparisons can be made over time.

The Bureau is committed to providing the public with a clear understanding of surgical waiting times in NSW. Further detail on our methodology can be found in the addendum *Technical Supplement: Elective surgery measures, January to March 2011* available at the Bureau website www.bhi.nsw.gov.au

Small number suppression

Some hospitals conduct few surgical procedures. When these procedures are reported by urgency category, there may only be small numbers of patients in one or more of them. Small numbers in any group need to be treated cautiously to protect patient identity.

The Bureau suppresses information based on very few patients. If there are fewer than 10 patients in any group, patient numbers or percentages are replaced by a symbol, which refers to footnotes about small number suppression. The Bureau may use its discretion to suppress the next smallest values, or results for an entire hospital with few patients, if there is a risk of disclosing patient identities.

In this issue of *Hospital Quarterly*, the group referred to as staged is not suppressed if it contains fewer than 10 patients. There is no reasonable risk to privacy in reporting these small numbers because they are derived from information on how these patients were booked for surgery and this material is not publicly available.

Appendix: Activity and performance data tables at hospital and local health network level

The following table presents the number of elective surgery admissions, by urgency category, for major hospitals in NSW.

The table is ordered by local health network and includes all principal referral, paediatric specialist, ungrouped acute – tertiary referral,

major metropolitan, major non-metropolitan, and district groups 1 and 2 hospitals that conduct elective surgery. These hospitals account for 98% of all elective surgery recorded as complete in WLCOS. Surgery information from smaller hospitals is presented for each local health network under the 'other' category.

Appendix table 1: NSW elective surgery activity, by hospital and local health network, January to March 2011

		Number of elective surgical procedures				
		All categories (excl. staged procedures)	Urgent ¹	Semi-urgent ¹	Non-urgent ²	Staged procedures ³
New South Wales						
Total New South Wales	46,498	11,431	13,916	17,603	3,548	
Central Coast Local Health Network (CCLHN)						
Gosford Hospital	1,385	273	434	520	158	
Wyong Hospital	836	84	330	377	45	
Total CCLHN	2,221	357	764	897	203	
Far West Local Health Network (FWLHN)						
Broken Hill Base Hospital	242	39	87	103	13	
Total FWLHN	242	39	87	103	13	
Hunter New England Local Health Network (HNELHN)						
Armidale and New England Hospital	219	40	71	108	0	
Belmont Hospital	535	97	172	232	34	
Calvary Mater Newcastle	283	147	85	45	6	
Cessnock District Hospital	264	42	163	52	7	
Gunnedah District Hospital	71	18	22	30	1	
Inverell District Hospital	36	*	15	16	*	
John Hunter Hospital	2,139	681	664	661	133	
Kurri Kurri District Hospital	347	27	21	298	1	
Maitland Hospital	541	101	210	219	11	
Manning Base Hospital	555	88	93	342	32	
Moree District Hospital	95	20	24	50	1	
Muswellbrook District Hospital	127	13	89	24	1	
Narrabri District Hospital	47	*	26	*	0	
Singleton District Hospital	131	14	30	84	3	
Tamworth Base Hospital	697	183	217	221	76	
Other HNELHN	119	14	41	64	0	
Total HNELHN	6,206	1,485	1,943	2,446	306	

Number of elective surgical procedures

All categories (excl. staged procedures)		Urgent ¹	Semi-urgent ¹	Non-urgent ²	Staged procedures ³
Illawarra Shoalhaven Local Health Network (ISLHN)					
Bulli District Hospital	106	27	18	61	0
Milton and Ulladulla Hospital	21	*	*	*	*
Shellharbour Hospital	709	64	175	470	0
Shoalhaven and District Memorial Hospital	706	123	169	368	46
Wollongong Hospital	1,144	354	267	270	253
Total ISLHN	2,686	568	629	1,169	299
Mid North Coast Local Health Network (MNCLHN)					
Coffs Harbour Base Hospital	992	199	212	438	143
Kempsey Hospital	166	*	22	136	*
Macksville District Hospital	56	*	12	40	*
Port Macquarie Base Hospital	691	168	213	218	92
Other MNCLHN	202	18	80	68	36
Total MNCLHN	2,107	385	539	900	271
Murrumbidgee Local Health Network (MLHN)					
Deniliquin Health Service	64	15	32	17	0
Griffith Base Hospital	214	56	43	99	16
Tumut Health Service	57	*	*	27	0
Wagga Wagga Base Hospital	1,039	236	342	429	32
Young Health Service	74	10	24	19	21
Other MLHN	103	25	44	34	0
Total MLHN	1,551	342	485	625	69
Nepean Blue Mountains Local Health Network (NBMLHN)					
Blue Mountains District Anzac Memorial Hospital	76	18	15	42	1
Hawkesbury Private	268	66	77	115	10
Lithgow Health Service	169	11	45	108	5
Nepean Hospital	1,159	329	420	378	32
Other NBMLHN	162	*	40	112	*
Total NBMLHN	1,834	424	597	755	48
Northern NSW Local Health Network (NNSWLHN)					
Ballina District Hospital	134	30	58	38	8
Casino and District Memorial Hospital	191	19	51	112	9
Grafton Base Hospital	336	119	100	106	11
Lismore Base Hospital	968	322	282	278	86
Macleay District Hospital	17	*	*	*	*
Murwillumbah District Hospital	446	68	88	248	42
The Tweed Hospital	689	206	181	183	119
Total NNSWLHN	2,781	764	760	965	275

Number of elective surgical procedures

All categories
(excl. staged
procedures)

Urgent¹

Semi-urgent¹

Non-urgent²

Staged
procedures³

Northern Sydney Local Health Network (NSLHN)					
Hornsby and Ku-Ring-Gai Hospital	519	97	119	256	47
Manly District Hospital	282	83	106	68	25
Mona Vale and District Hospital	348	54	84	189	21
Royal North Shore Hospital	1,390	565	355	420	50
Ryde Hospital	311	38	111	154	8
Total NSLHN	2,850	837	775	1,087	151

South Eastern Sydney Local Health Network (SESLHN)					
Prince of Wales Hospital	1,134	289	497	327	21
Royal Hospital for Women	468	190	174	103	1
St George Hospital	1,046	455	325	214	52
Sutherland Hospital	728	171	254	275	28
Sydney Hospital / Sydney Eye Hospital	1,063	187	266	609	1
Total SESLHN	4,439	1,292	1,516	1,528	103

South Western Sydney Local Health Network (SWSLHN)					
Bankstown / Lidcombe Hospital	1,203	183	351	490	179
Bowral and District Hospital	322	58	102	157	5
Campbelltown Hospital	940	94	290	364	192
Fairfield Hospital	570	70	94	383	23
Liverpool Hospital	1,602	556	414	491	141
Total SWSLHN	4,637	961	1,251	1,885	540

Southern NSW Local Health Network (SNSWLHN)					
Bateman's Bay District Hospital	173	13	24	103	33
Bega District Hospital	306	87	48	162	9
Cooma Health Service	59	18	14	26	1
Goulburn Base Hospital	365	100	106	157	2
Moruya District Hospital	172	56	51	61	4
Pambula District Hospital	26	*	*	*	*
Queanbeyan Health Service	167	17	71	79	0
Total SNSWLHN	1,268	291	314	588	49

St Vincent's Health Network (SVHN)					
St Vincent's Hospital, Darlinghurst	840	352	173	242	73
Total SVHN	840	352	173	242	73

Sydney Children's Hospitals Network (SCHN)					
Sydney Children's Hospital	712	179	230	282	21
The Children's Hospital at Westmead	1,384	314	373	499	198
Total SCHN	2,096	493	603	781	219

Number of elective surgical procedures

All categories (excl. staged procedures)		Urgent ¹	Semi-urgent ¹	Non-urgent ²	Staged procedures ³
Sydney Local Health Network (SYDLHN)					
Canterbury Hospital	571	67	223	232	49
Concord Hospital	1,826	358	461	643	364
RPAH Institute of Rheumatology & Orthopaedics	343	31	49	263	0
Royal Prince Alfred Hospital	2,498	988	826	467	217
Total SYDLHN	5,238	1,444	1,559	1,605	630
Western NSW Local Health Network (WNSWLHN)					
Bathurst Base Hospital	400	97	131	132	40
Cowra District Hospital	114	18	44	52	0
Dubbo Base Hospital	695	90	197	340	68
Forbes District Hospital	86	15	20	51	0
Mudgee District Hospital	96	12	28	45	11
Orange Base Hospital	608	76	186	296	50
Parkes District Hospital	64	12	23	29	0
Other WNSWLHN	*	0	*	*	0
Total WNSWLHN	2,063	320	629	945	169
Western Sydney Local Health Network (WSLHN)					
Auburn Hospital	660	137	227	290	6
Blacktown Hospital	676	149	294	214	19
Mount Druitt Hospital	452	58	191	197	6
Westmead Hospital (all units)	1,645	664	550	342	89
Total WSLHN	3,433	1,008	1,262	1,043	120

(*) Values suppressed due to small numbers and to protect privacy. Suppressed data have been excluded from local health network totals.

1. Excluding staged procedures.
2. Excluding staged procedures and non-urgent cystoscopy.
3. Including non-urgent cystoscopy.

Note: All urgency categories include deferred patients as appropriate.

Note: Because staged patients are now reported separately, numbers of surgical procedures by urgency category will differ from those reported in previous *Hospital Quarterly* reports and in the NSW Department of Health's *Quarterly Hospital Performance Report*.

Source: Waiting List Collection On-line System, NSW Health. Data extracted on 18 April 2011.

The following table presents the percentage of elective surgery admissions within the clinically recommended time for each urgency category for this quarter and for the same quarter in 2010. The table is ordered by local health network and includes all principal referral, paediatric specialist, ungrouped acute – tertiary referral,

major metropolitan, major non-metropolitan and district groups 1 and 2 hospitals that conduct elective surgery. These hospitals account for 98% of all elective surgery recorded as complete in WLCOS. Surgery information from smaller hospitals is presented for each local health network under the 'other' category.

Appendix table 2: NSW on-time elective surgery performance, by hospital and local health network, January to March 2011 compared with January to March 2010

Percentage of patients treated on time								
All categories ¹		Urgent ¹		Semi-urgent ¹		Non-urgent ² (new method)		
This quarter	Same quarter last year	This quarter	Same quarter last year	This quarter	Same quarter last year	This quarter	Same quarter last year	
New South Wales								
Total New South Wales	90	86	92	93	87	80	92	87
Central Coast Local Health Network (CCLHN)								
Gosford Hospital	92	64	98	98	90	55	91	52
Wyong Hospital	96	83	98	97	95	65	97	94
Total CCLHN	94	71	98	97	92	58	94	71
Far West Local Health Network (FWLHN)								
Broken Hill Base Hospital	96	92	100	93	90	86	100	97
Total FWLHN	96	92	100	93	90	86	100	97
Hunter New England Local Health Network (HNELHN)								
Armidale and New England Hospital	86	95	88	87	86	95	86	99
Belmont Hospital	97	94	99	92	92	90	100	97
Calvary Mater Newcastle	71	81	67	74	66	93	98	100
Cessnock District Hospital	94	99	95	*	92	99	100	98
Gunnedah District Hospital	100	98	100	*	100	100	100	100
Inverell District Hospital	89	95	*	*	100	87	75	100
John Hunter Hospital	88	83	89	90	87	77	89	80
Kurri Kurri District Hospital	95	74	96	95	81	81	96	71
Maitland Hospital	92	83	81	87	94	79	95	86
Manning Base Hospital	95	89	98	94	90	78	95	91
Moree District Hospital	100	99	100	100	100	96	100	100
Muswellbrook District Hospital	99	100	100	*	99	100	100	100
Narrabri District Hospital	100	100	100	100	100	100	*	*
Singleton District Hospital	100	100	100	*	100	100	100	100
Tamworth Base Hospital	87	95	92	99	82	87	86	100
Other HNELHN	99	98	100	89	98	99	100	100
Total HNELHN	91	88	89	90	89	85	93	89

Percentage of patients treated on time

	All categories ¹		Urgent ¹		Semi-urgent ¹		Non-urgent ² (new method)	
	This quarter	Same quarter last year	This quarter	Same quarter last year	This quarter	Same quarter last year	This quarter	Same quarter last year
Illawarra Shoalhaven Local Health Network (ISLHN)								
Bulli District Hospital	98	93	96	100	100	95	98	90
Milton and Ulladulla Hospital	*	100	*	100	*	*	*	100
Shellharbour Hospital	93	92	73	68	87	89	98	97
Shoalhaven and District Memorial Hospital	80	88	85	87	70	81	84	91
Wollongong Hospital	83	84	86	86	73	75	89	90
Total ISLHN	86	88	85	85	77	82	92	93
Mid North Coast Local Health Network (MNCLHN)								
Coffs Harbour Base Hospital	69	64	79	80	67	62	64	56
Kempsey Hospital	95	92	*	*	68	45	100	100
Macksville District Hospital	87	70	*	*	75	53	95	73
Port Macquarie Base Hospital	88	74	92	86	79	58	94	76
Other MNCLHN	93	80	89	75	88	69	100	92
Total MNCLHN	80	71	85	82	75	61	81	72
Murrumbidgee Local Health Network (MLHN)								
Deniliquin Health Service	97	96	100	100	94	91	100	*
Griffith Base Hospital	76	62	48	63	65	34	96	84
Tumut Health Service	86	87	*	*	81	58	89	100
Wagga Wagga Base Hospital	81	71	83	93	81	64	80	67
Young Health Service	81	78	100	*	58	25	100	100
Other MLHN	97	100	100	100	93	100	100	100
Total MLHN	82	73	80	90	80	62	85	74
Nepean Blue Mountains Local Health Network (NBMLHN)								
Blue Mountains District Anzac Memorial Hospital	92	73	100	73	73	74	95	71
Hawkesbury Private	69	66	85	89	58	75	67	44
Lithgow Health Service	99	96	100	100	100	100	99	93
Nepean Hospital	78	82	93	93	71	69	72	79
Other NBMLHN	94	76	*	*	100	43	92	100
Total NBMLHN	80	79	93	92	73	72	79	74
Northern NSW Local Health Network (NNSWLHN)								
Ballina District Hospital	98	100	100	100	95	100	100	100
Casino and District Memorial Hospital	96	94	89	100	90	83	100	100
Grafton Base Hospital	88	80	92	95	87	73	84	72
Lismore Base Hospital	84	82	85	94	81	69	87	83
Maclean District Hospital	*	98	*	93	*	100	*	100
Murwillumbah District Hospital	90	76	79	83	81	68	96	79
The Tweed Hospital	80	79	72	80	77	68	93	89
Total NNSWLHN	86	82	83	90	82	72	92	85

Percentage of patients treated on time

		All categories ¹		Urgent ¹		Semi-urgent ¹		Non-urgent ² (new method)	
		This quarter	Same quarter last year	This quarter	Same quarter last year	This quarter	Same quarter last year	This quarter	Same quarter last year
Northern Sydney Local Health Network (NSLHN)									
Hornsby and Ku-Ring-Gai Hospital		98	90	99	100	97	88	98	85
Manly District Hospital		98	98	99	99	97	96	100	98
Mona Vale and District Hospital		99	97	98	99	98	99	100	96
Royal North Shore Hospital		95	87	96	93	89	71	96	96
Ryde Hospital		95	98	97	100	95	96	95	99
Total NSLHN		96	91	97	95	93	82	97	95
South Eastern Sydney Local Health Network (SESLHN)									
Prince of Wales Hospital		90	83	93	93	90	84	86	70
Royal Hospital for Women		100	99	99	99	99	99	100	100
St George Hospital		82	81	88	91	78	69	77	80
Sutherland Hospital		82	85	72	88	83	76	89	91
Sydney Hospital / Sydney Eye Hospital		96	94	100	98	94	96	95	93
Total SESLHN		89	87	91	94	88	83	90	87
South Western Sydney Local Health Network (SWSLHN)									
Bankstown / Lidcombe Hospital		85	85	84	86	75	76	92	92
Bowral and District Hospital		100	89	100	100	100	88	100	87
Campbelltown Hospital		83	87	78	83	76	84	90	90
Fairfield Hospital		98	75	99	99	99	99	97	62
Liverpool Hospital		91	91	93	97	91	82	89	92
Total SWSLHN		90	86	91	93	84	82	93	86
Southern NSW Local Health Network (SNSWLHN)									
Bateman's Bay District Hospital		98	91	100	100	96	69	98	96
Bega District Hospital		85	86	94	92	75	90	83	82
Cooma Health Service		100	85	100	†	100	75	100	100
Goulburn Base Hospital		94	88	97	93	100	94	88	82
Moruya District Hospital		96	99	89	100	100	98	100	100
Pambula District Hospital		*	100	*	*	*	*	*	*
Queanbeyan Health Service		99	99	100	*	99	99	100	100
Total SNSWLHN		94	91	95	94	96	92	92	90
St Vincent's Health Network (SVHN)									
St Vincent's Hospital, Darlinghurst		93	89	96	93	92	76	90	92
Total SVHN		93	89	96	93	92	76	90	92
Sydney Children's Hospitals Network (SCHN)									
Sydney Children's Hospital		96	88	97	100	94	80	97	97
The Children's Hospital at Westmead		91	77	98	96	78	60	97	89
Total SCHN		93	81	97	97	84	68	97	91

Percentage of patients treated on time

	All categories ¹		Urgent ¹		Semi-urgent ¹		Non-urgent ² (new method)	
	This quarter	Same quarter last year	This quarter	Same quarter last year	This quarter	Same quarter last year	This quarter	Same quarter last year
Sydney Local Health Network (SYDLHN)								
Canterbury Hospital	84	84	96	98	79	79	84	84
Concord Hospital	97	98	95	99	97	96	98	99
RPAH Institute of Rheumatology & Orthopaedics	100	100	100	100	100	100	100	100
Royal Prince Alfred Hospital	99	99	99	99	100	100	99	100
Total SYDLHN	97	97	98	99	96	95	97	98
Western NSW Local Health Network (WNSWLHN)								
Bathurst Base Hospital	92	95	95	95	85	94	96	95
Cowra District Hospital	97	82	100	100	93	59	100	97
Dubbo Base Hospital	97	96	97	96	94	96	99	96
Forbes District Hospital	99	84	100	*	100	100	98	80
Mudgee District Hospital	100	80	100	*	100	61	100	91
Orange Base Hospital	79	83	96	97	74	85	78	77
Parkes District Hospital	100	100	100	*	100	100	100	100
Other WNSWLHN	*	90	†	*	*	*	*	95
Total WNSWLHN	91	89	97	96	87	87	92	88
Western Sydney Local Health Network (WSLHN)								
Auburn Hospital	85	91	93	95	74	82	89	96
Blacktown Hospital	86	88	91	95	79	75	94	92
Mount Druitt Hospital	83	78	95	91	76	65	87	83
Westmead Hospital (all units)	93	93	97	97	93	87	87	88
Total WSLHN	89	90	95	96	84	81	89	90

(*) Values suppressed due to small numbers and to protect privacy.

(†) This hospital or group conducted no surgery for this urgency category in this quarter and therefore has no on-time performance value.

1. Excluding staged procedures.

2. Excluding staged procedures and non-urgent cystoscopy.

Note: All urgency categories include deferred patients as appropriate.

Note: Because staged patients are now reported separately, on-time performance by urgency category will differ from those reported in previous *Hospital Quarterly* reports and in the NSW Department of Health's *Quarterly Hospital Performance Report*.

Source: Waiting List Collection On-line System, NSW Health. Data extracted on 18 April 2011.

The following table presents the median waiting time (in days) of elective surgery admissions for each urgency category for this quarter and for the same quarter in 2010. The table is ordered by local health network and includes all principal referral, paediatric specialist, ungrouped acute - tertiary referral,

major metropolitan, major non-metropolitan and district groups 1 and 2 hospitals that conduct elective surgery. These hospitals account for 98% of all elective surgery recorded as complete in WLCOS. Surgery information from smaller hospitals is presented for each local health network under the 'other' category.

Appendix table 3: NSW median elective surgery waiting time performance, by hospital and local health network, January to March 2011 compared with January to March 2010

Median waiting time (days)						
	Urgent ¹		Semi-urgent ¹		Non-urgent ² (new method)	
	This quarter	Same quarter last year	This quarter	Same quarter last year	This quarter	Same quarter last year
New South Wales						
Total New South Wales	11	9	50	54	217	207
Central Coast Local Health Network (CCLHN)						
Gosford Hospital	18	17	55	84	325	360
Wyong Hospital	16	15	49	69	253	273
Total CCLHN	18	15	51	80	300	314
Far West Local Health Network (FWLHN)						
Broken Hill Base Hospital	15	8	72	58	229	214
Total FWLHN	15	8	72	58	229	214
Hunter New England Local Health Network (HNELHN)						
Armidale and New England Hospital	15	17	57	63	318	262
Belmont Hospital	15	16	55	56	205	209
Calvary Mater Newcastle	22	20	68	54	195	134
Cessnock District Hospital	8	*	21	18	90	116
Gunnedah District Hospital	7	*	18	48	96	55
Inverell District Hospital	*	*	47	64	357	209
John Hunter Hospital	11	12	48	57	239	239
Kurri Kurri District Hospital	8	7	55	77	216	268
Maitland Hospital	15	13	43	56	215	166
Manning Base Hospital	22	14	53	62	281	305
Moree District Hospital	8	4	36	21	54	100
Muswellbrook District Hospital	1	*	7	11	7	18
Narrabri District Hospital	6	8	29	27	*	*
Singleton District Hospital	7	*	21	20	44	38
Tamworth Base Hospital	8	8	62	60	251	178
Other HNELHN	18	10	29	35	140	134
Total HNELHN	12	12	45	50	206	196

Median waiting time (days)

Urgent ¹		Semi-urgent ¹		Non-urgent ² (new method)	
This quarter	Same quarter last year	This quarter	Same quarter last year	This quarter	Same quarter last year

Illawarra Shoalhaven Local Health Network (ISLHN)

Bulli District Hospital	10	12	47	53	198	301
Milton and Ulladulla Hospital	*	5	*	*	*	71
Shellharbour Hospital	22	22	63	71	217	179
Shoalhaven and District Memorial Hospital	14	12	77	66	313	311
Wollongong Hospital	9	9	76	65	313	289
Total ISLHN	12	10	71	68	257	274

Mid North Coast Local Health Network (MNCLHN)

Coffs Harbour Base Hospital	20	18	80	82	356	361
Kempsey Hospital	*	*	78	102	185	163
Macksville District Hospital	*	*	77	88	317	344
Port Macquarie Base Hospital	15	15	68	83	282	259
Other MNCLHN	15	25	61	53	194	134
Total MNCLHN	18	18	72	81	307	321

Murrumbidgee Local Health Network (MLHN)

Deniliquin Health Service	10	13	70	55	208	*
Griffith Base Hospital	34	26	70	105	328	313
Tumut Health Service	*	*	71	87	76	50
Wagga Wagga Base Hospital	19	18	56	67	328	331
Young Health Service	18	*	80	124	110	98
Other MLHN	15	7	29	32	91	74
Total MLHN	19	17	57	70	319	298

Nepean Blue Mountains Local Health Network (NBMLHN)

Blue Mountains District Anzac Memorial Hospital	8	26	73	70	45	220
Hawkesbury Private	16	14	83	56	349	376
Lithgow Health Service	17	16	42	40	274	246
Nepean Hospital	11	10	71	70	329	198
Other NBMLHN	*	26	34	110	221	25
Total NBMLHN	11	12	68	65	300	236

Northern NSW Local Health Network (NNSWLHN)

Ballina District Hospital	20	14	50	47	97	98
Casino and District Memorial Hospital	13	8	34	27	81	106
Grafton Base Hospital	11	15	51	51	267	345
Lismore Base Hospital	13	8	66	64	302	170
Maclean District Hospital	*	7	*	47	*	65
Murwillumbah District Hospital	20	21	58	73	335	344
The Tweed Hospital	20	15	70	65	217	190
Total NNSWLHN	14	13	60	61	259	204

Median waiting time (days)

Urgent ¹		Semi-urgent ¹		Non-urgent ² (new method)	
This quarter	Same quarter last year	This quarter	Same quarter last year	This quarter	Same quarter last year

Northern Sydney Local Health Network (NSLHN)						
Hornsby and Ku-Ring-Gai Hospital	7	4	27	39	114	150
Manly District Hospital	5	4	39	28	77	68
Mona Vale and District Hospital	5	3	20	28	40	35
Royal North Shore Hospital	6	6	48	62	130	149
Ryde Hospital	10	8	51	47	125	122
Total NSLHN	6	5	41	48	113	115

South Eastern Sydney Local Health Network (SESLHN)						
Prince of Wales Hospital	11	10	44	50	239	309
Royal Hospital for Women	6	6	29	37	75	55
St George Hospital	13	13	64	57	303	238
Sutherland Hospital	20	12	68	68	317	241
Sydney Hospital / Sydney Eye Hospital	10	10	46	49	218	299
Total SESLHN	12	10	50	52	225	276

South Western Sydney Local Health Network (SWSLHN)						
Bankstown / Lidcombe Hospital	16	15	59	72	170	183
Bowral and District Hospital	20	8	55	62	207	313
Campbelltown Hospital	21	18	64	63	280	265
Fairfield Hospital	13	11	53	52	284	316
Liverpool Hospital	10	8	49	55	251	216
Total SWSLHN	13	11	55	62	248	246

Southern NSW Local Health Network (SNSWLHN)						
Bateman's Bay District Hospital	18	7	49	46	327	335
Bega District Hospital	14	20	84	75	349	333
Cooma Health Service	10	†	20	50	113	60
Goulburn Base Hospital	14	10	47	34	302	211
Moruya District Hospital	15	10	39	34	213	85
Pambula District Hospital	*	*	*	*	*	*
Queanbeyan Health Service	19	*	61	68	202	162
Total SNSWLHN	13	13	52	45	281	267

St Vincent's Health Network (SVHN)						
St Vincent's Hospital, Darlinghurst	5	5	50	42	144	131
Total SVHN	5	5	50	42	144	131

Sydney Children's Hospitals Network (SCHN)						
Sydney Children's Hospital	7	4	24	33	110	139
The Children's Hospital at Westmead	7	6	52	71	109	120
Total SCHN	7	6	42	55	109	125

Median waiting time (days)

Urgent ¹		Semi-urgent ¹		Non-urgent ² (new method)	
This quarter	Same quarter last year	This quarter	Same quarter last year	This quarter	Same quarter last year

Sydney Local Health Network (SYDLHN)

Canterbury Hospital	17	14	72	65	318	308
Concord Hospital	8	7	48	48	141	132
RPAH Institute of Rheumatology & Orthopaedics	4	5	23	16	49	25
Royal Prince Alfred Hospital	6	5	16	17	41	30
Total SYDLHN	7	6	33	33	97	89

Western NSW Local Health Network (WNSWLHN)

Bathurst Base Hospital	8	8	73	40	269	277
Cowra District Hospital	6	4	55	76	106	44
Dubbo Base Hospital	7	13	35	34	255	175
Forbes District Hospital	11	*	25	56	306	307
Mudgee District Hospital	12	*	47	83	258	336
Orange Base Hospital	7	14	64	60	345	346
Parkes District Hospital	3	*	25	18	43	19
Other WNSWLHN	†	*	*	*	*	43
Total WNSWLHN	8	11	51	46	298	283

Western Sydney Local Health Network (WSLHN)

Auburn Hospital	12	8	62	64	236	233
Blacktown Hospital	13	10	46	50	142	158
Mount Druitt Hospital	8	9	58	63	241	175
Westmead Hospital (all units)	12	8	38	36	124	124
Total WSLHN	12	8	46	49	164	169

(*) Values suppressed due to small numbers and to protect privacy.

(†) This hospital or group conducted no surgery for this urgency category in this quarter and therefore has no on-time performance value.

1. Excluding staged procedures.

2. Excluding staged procedures and non-urgent cystoscopy.

Note: All urgency categories include deferred patients as appropriate.

Note: Because staged patients are now reported separately, median waiting time by urgency category will differ from those reported in previous *Hospital Quarterly* reports and in the NSW Department of Health's *Quarterly Hospital Performance Report*.

Source: Waiting List Collection On-line System, NSW Health. Data extracted on 18 April 2011.

Download our reports

The report, *Hospital Quarterly: Performance of NSW public hospitals, January to March 2011* and related reports are available at www.bhi.nsw.gov.au

The suite of products includes:

- Three core modules on Admitted Patients, Elective Surgery and Emergency Departments
- *Performance Profiles: Elective surgery* (performance and activity reports for more than 80 hospitals and NSW as a whole)
- *Performance Profiles: Emergency department care* (performance and activity reports for EDs in more than 60 hospitals and NSW as a whole)
- *Data Quality Assessments*
- *Technical Supplements*



About the Bureau

The Bureau of Health Information provides the community, healthcare professionals and the NSW Parliament with timely, accurate and comparable information on the performance of the NSW public health system in ways that enhance the system's accountability and inform efforts to increase its beneficial impact on the health and wellbeing of the people of NSW.

The Bureau is an independent, board-governed statutory health corporation. The conclusions in this report are those of the Bureau and no official endorsement by the NSW Minister for Health, the NSW Department of Health or any other NSW statutory health corporation is intended or should be inferred.

To contact the Bureau

Telephone: +61 2 8644 2100

Fax: +61 2 8644 2119

Email: enquiries@bhi.nsw.gov.au

Postal address:

PO Box 1770

Chatswood

New South Wales 2057

Australia

Web: www.bhi.nsw.gov.au

Copyright Bureau of Health Information 2011

State Health Publication Number: (BHI) 110115
ISSN 1838-3238

Suggested citation: Bureau of Health Information.
Hospital Quarterly: Performance of NSW public hospitals, January to March 2011. Elective Surgery. 2(1). Sydney (NSW); 2011.

Published June 2011

Please note that there is the potential for minor revisions of data in this report. Please check the online version at www.bhi.nsw.gov.au for any amendments.