

## Kurri Kurri District Hospital: Emergency department (ED) overview

April to June 2017

All presentations:<sup>1</sup> 944 patients

Emergency presentations:<sup>2</sup> 888 patients

Same period last year	Change since one year ago
1,057	-10.7%
1,036	-14.3%

## Kurri Kurri District Hospital: Time patients waited to start treatment<sup>3</sup>

April to June 2017

**Triage 2** Emergency (e.g. chest pain, severe burns): 89 patients

Median time to start treatment<sup>4</sup> 5 minutes

90th percentile time to start treatment<sup>5</sup> \*

**Triage 3** Urgent (e.g. moderate blood loss, dehydration): 206 patients

Median time to start treatment<sup>4</sup> 11 minutes

90th percentile time to start treatment<sup>5</sup> 35 minutes

**Triage 4** Semi-urgent (e.g. sprained ankle, earache): 462 patients

Median time to start treatment<sup>4</sup> 15 minutes

90th percentile time to start treatment<sup>5</sup> 58 minutes

**Triage 5** Non-urgent (e.g. small cuts or abrasions): 131 patients

Median time to start treatment<sup>4</sup> 14 minutes

90th percentile time to start treatment<sup>5</sup> \*

Same period last year	NSW (this period)
91	
4 minutes	8 minutes
*	26 minutes
292	
10 minutes	20 minutes
29 minutes	67 minutes
484	
12 minutes	25 minutes
50 minutes	99 minutes
169	
10 minutes	23 minutes
50 minutes	101 minutes

## Kurri Kurri District Hospital: Time from presentation until leaving the ED

April to June 2017

Attendances used to calculate time to leaving the ED:<sup>6</sup> 944 patients

Percentage of patients who spent four hours or less in the ED

95.1%

Same period last year	Change since one year ago
1,057	-10.7%
91.8%	

\* Suppressed due to small number of patients and to protect privacy. Relevant graphs are also suppressed.

- All emergency and non-emergency attendances at the emergency department (ED).
- All attendances that have a triage category and are coded as emergency presentations or unplanned return visits.
- Some patients are excluded from ED time measures due to calculation requirements. For details, see the *Technical Supplement: Emergency department measures, July to September 2016*.
- The median is the time by which half of patients started treatment. The other half of patients waited equal to or longer than this time.
- The 90th percentile is the time by which 90% of patients started treatment. The final 10% of patients waited equal to or longer than this time.
- All presentations that have a departure time.

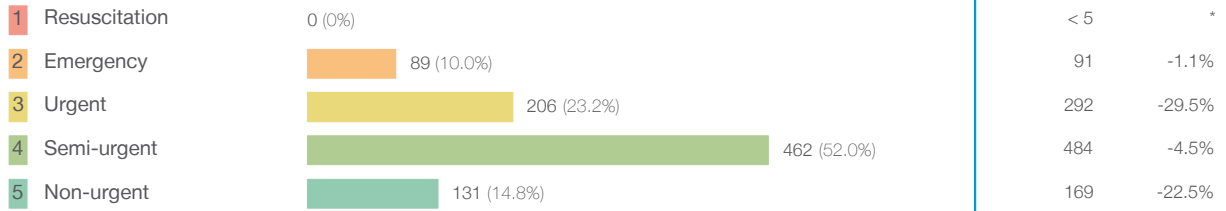
**Note:** Presentation time is the earlier time recorded for clerical registration or the triage process. Treatment time is the earliest time recorded when a healthcare professional provides medical care relevant to the patient's presenting problems.

**Source:** Health Information Exchange, NSW Health (extracted 21 July 2017).

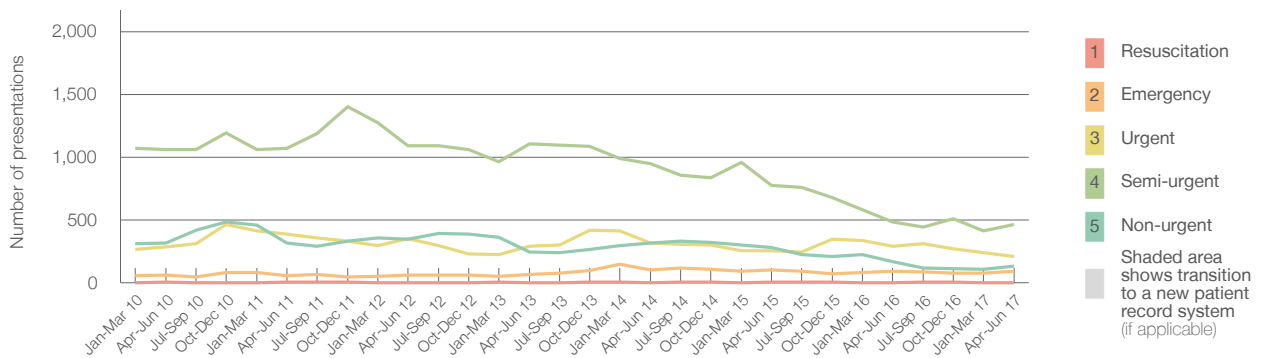
## Kurri Kurri District Hospital: Patients presenting to the emergency department April to June 2017

All presentations<sup>1</sup> 944 patients

Emergency presentations<sup>2</sup> by triage category: 888 patients



Emergency presentations<sup>2</sup> by quarter, April 2012 to June 2017 †



	Apr-Jun 2010	Apr-Jun 2011	Apr-Jun 2012	Apr-Jun 2013	Apr-Jun 2014	Apr-Jun 2015	Apr-Jun 2016	Apr-Jun 2017
Resuscitation	< 5	< 5	< 5	0	< 5	5	< 5	0
Emergency	65	57	60	68	102	99	91	89
Urgent	284	387	349	290	317	253	292	206
Semi-urgent	1,061	1,070	1,091	1,104	949	775	484	462
Non-urgent	316	313	348	246	316	282	169	131
All emergency presentations	1,726	1,827	1,848	1,708	1,684	1,414	1,036	888

## Kurri Kurri District Hospital: Patients arriving by ambulance April to June 2017

ED Transfer of care time is not currently available for this hospital.<sup>7</sup>

(†) Data points are not shown in graphs for quarters when patient numbers are too small.

(‡) Caution is advised when interpreting abrupt changes over time at the hospital level. For example, performance before and after transition to a new information system is not directly comparable. For more information, see Background Paper: Approaches to reporting time measures of emergency department performance, December 2011.

## Kurri Kurri District Hospital: Time patients waited to start treatment, triage 2

April to June 2017

**Triage 2** Emergency (e.g. chest pain, severe burns)

Number of triage 2 patients: 89

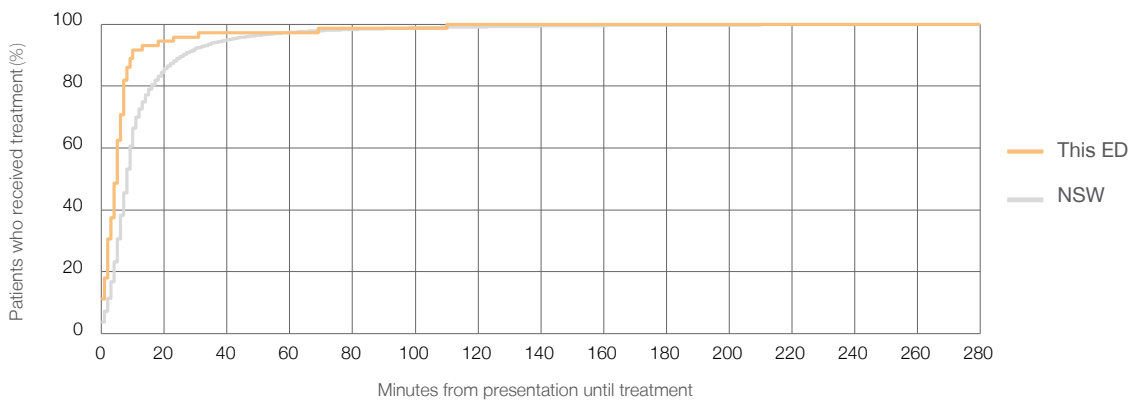
Number of triage 2 patients used to calculate waiting time:<sup>3</sup> 72

Median time to start treatment<sup>4</sup> 5 minutes

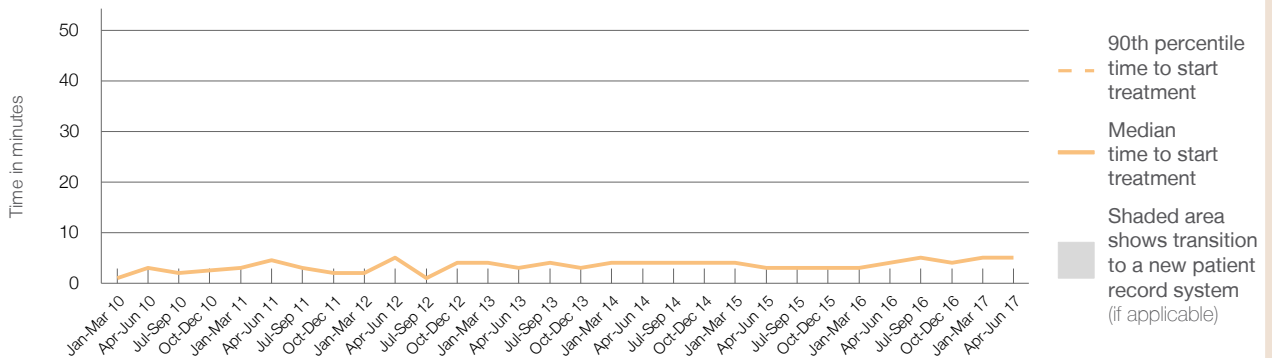
90th percentile time to start treatment<sup>5</sup> \*

Same period last year	NSW (this period)
91	80
4 minutes	8 minutes
*	26 minutes

Percentage of triage 2 patients who received treatment by time, April to June 2017



Time patients waited to start treatment (minutes) for triage 2 patients, April 2012 to June 2017<sup>†‡</sup>



	Apr-Jun 2010	Apr-Jun 2011	Apr-Jun 2012	Apr-Jun 2013	Apr-Jun 2014	Apr-Jun 2015	Apr-Jun 2016	Apr-Jun 2017
Median time to start treatment <sup>4</sup> (minutes)	3	5	5	3	4	3	4	5
90th percentile time to start treatment <sup>5</sup> (minutes)	*	*	*	*	*	*	*	*

(†) Data points are not shown in graphs for quarters when patient numbers are too small.

(‡) Caution is advised when interpreting abrupt changes over time at the hospital level. For example, performance before and after transition to a new information system is not directly comparable. For more information, see Background Paper: Approaches to reporting time measures of emergency department performance, December 2011.

## Kurri Kurri District Hospital: Time patients waited to start treatment, triage 3

April to June 2017

**Triage 3** Urgent (e.g. moderate blood loss, dehydration)

Number of triage 3 patients: 206

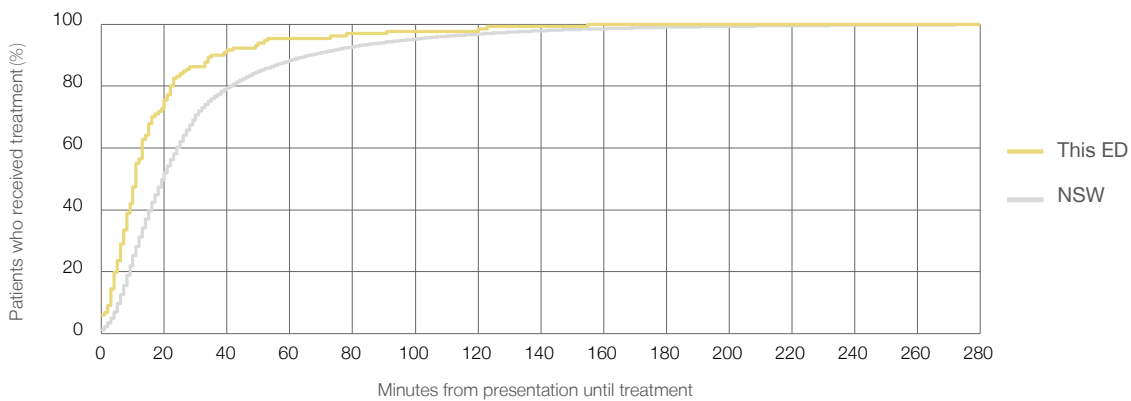
Number of triage 3 patients used to calculate waiting time:<sup>3</sup> 131

Median time to start treatment<sup>4</sup>  11 minutes

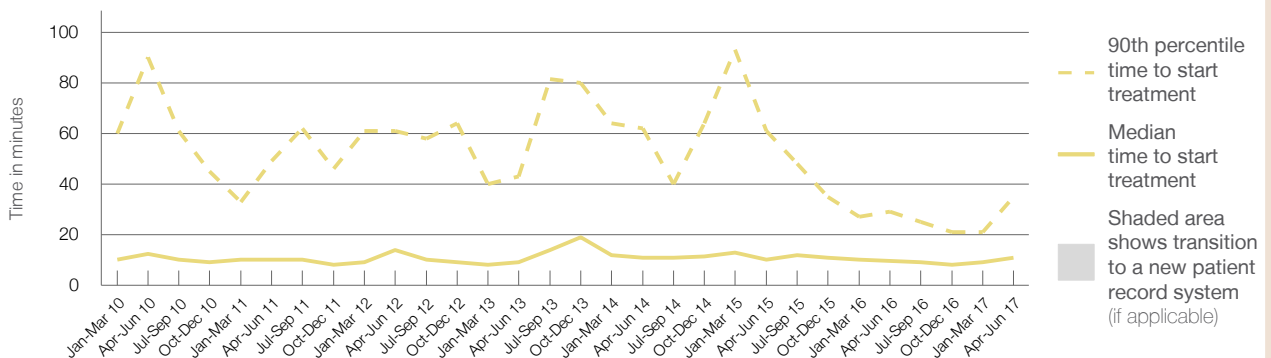
90th percentile time to start treatment<sup>5</sup>  35 minutes

Same period last year	NSW (this period)
292	
216	
10 minutes	20 minutes
29 minutes	67 minutes

Percentage of triage 3 patients who received treatment by time, April to June 2017



Time patients waited to start treatment (minutes) for triage 3 patients, April 2012 to June 2017<sup>†‡</sup>



	Apr-Jun 2010	Apr-Jun 2011	Apr-Jun 2012	Apr-Jun 2013	Apr-Jun 2014	Apr-Jun 2015	Apr-Jun 2016	Apr-Jun 2017
Median time to start treatment <sup>4</sup> (minutes)	13	10	14	9	11	10	10	11
90th percentile time to start treatment <sup>5</sup> (minutes)	90	49	61	43	62	61	29	35

(†) Data points are not shown in graphs for quarters when patient numbers are too small.

(‡) Caution is advised when interpreting abrupt changes over time at the hospital level. For example, performance before and after transition to a new information system is not directly comparable. For more information, see Background Paper: Approaches to reporting time measures of emergency department performance, December 2011.

## Kurri Kurri District Hospital: Time patients waited to start treatment, triage 4 April to June 2017

**Triage 4** Semi-urgent (e.g. sprained ankle, earache)

Number of triage 4 patients: 462

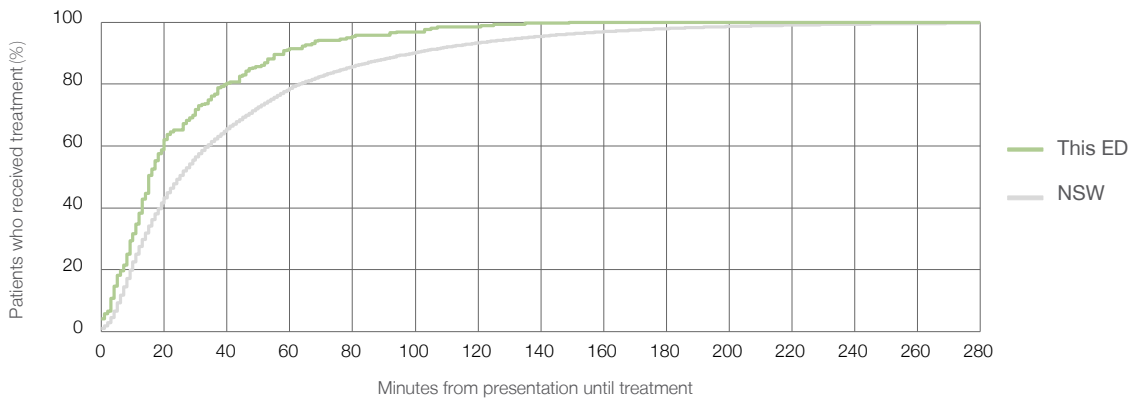
Number of triage 4 patients used to calculate waiting time:<sup>3</sup> 259

Median time to start treatment<sup>4</sup>  15 minutes

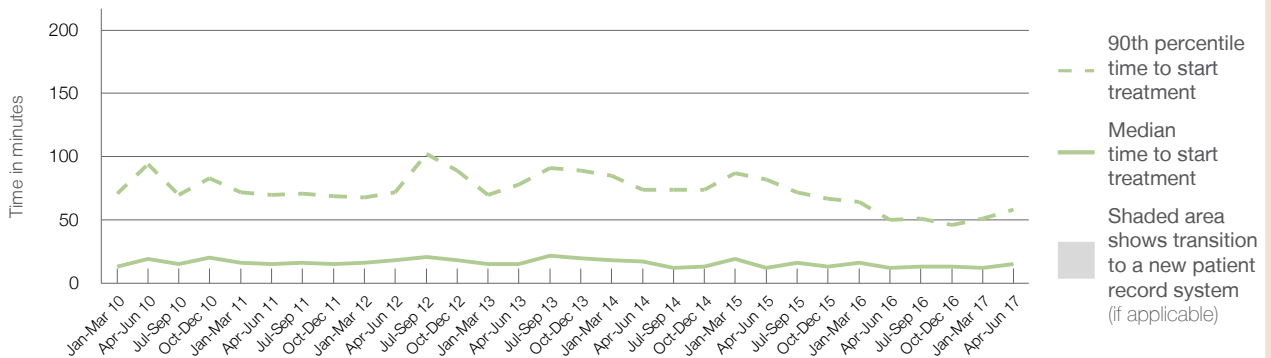
90th percentile time to start treatment<sup>5</sup>  58 minutes

Same period last year	NSW (this period)
484	346
12 minutes	25 minutes
50 minutes	99 minutes

### Percentage of triage 4 patients who received treatment by time, April to June 2017



### Time patients waited to start treatment (minutes) for triage 4 patients, April 2012 to June 2017<sup>†‡</sup>



	Apr-Jun 2010	Apr-Jun 2011	Apr-Jun 2012	Apr-Jun 2013	Apr-Jun 2014	Apr-Jun 2015	Apr-Jun 2016	Apr-Jun 2017
Median time to start treatment <sup>4</sup> (minutes)	19	15	18	15	17	12	12	15
90th percentile time to start treatment <sup>5</sup> (minutes)	94	70	72	78	74	82	50	58

(†) Data points are not shown in graphs for quarters when patient numbers are too small.

(‡) Caution is advised when interpreting abrupt changes over time at the hospital level. For example, performance before and after transition to a new information system is not directly comparable. For more information, see Background Paper: Approaches to reporting time measures of emergency department performance, December 2011.

## Kurri Kurri District Hospital: Time patients waited to start treatment, triage 5

April to June 2017

**Triage 5** Non-urgent (e.g. small cuts or abrasions)

Number of triage 5 patients: 131

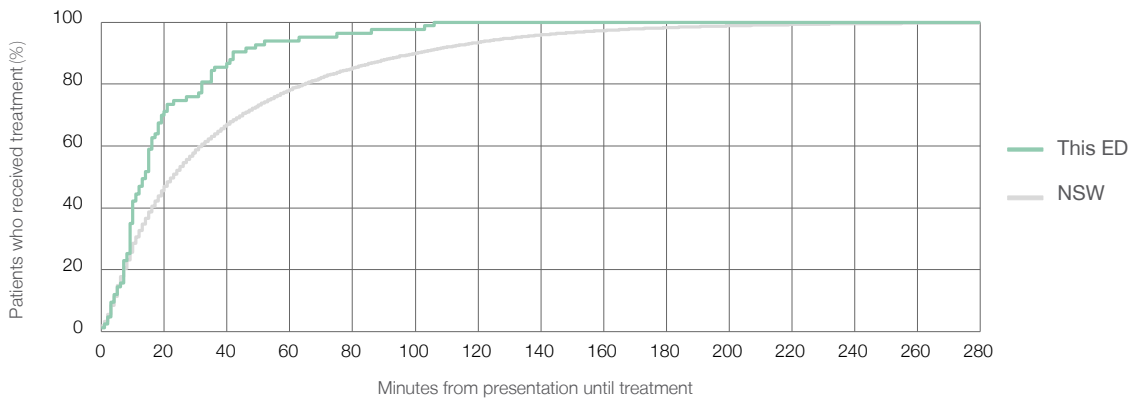
Number of triage 5 patients used to calculate waiting time:<sup>3</sup> 83

Median time to start treatment<sup>4</sup> 14 minutes

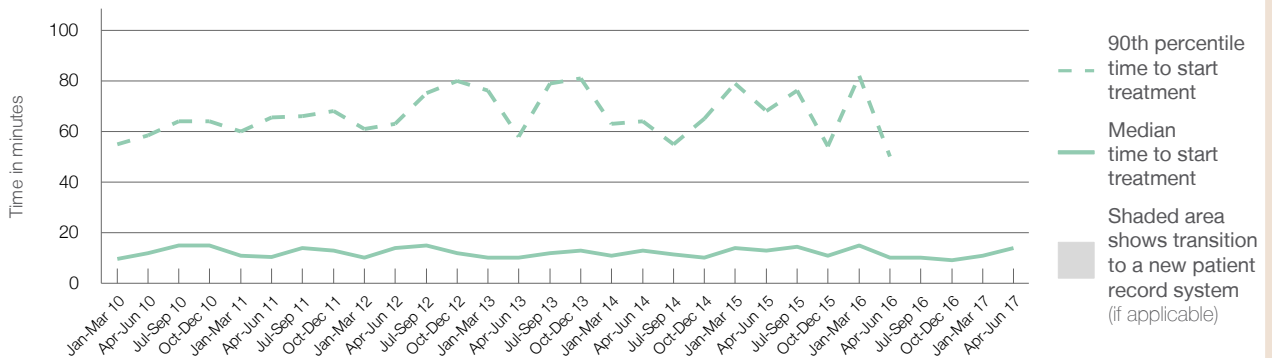
90th percentile time to start treatment<sup>5</sup> \*

Same period last year	NSW (this period)
169	129
10 minutes	23 minutes
50 minutes	101 minutes

### Percentage of triage 5 patients who received treatment by time, April to June 2017



### Time patients waited to start treatment (minutes) for triage 5 patients, April 2012 to June 2017<sup>†‡</sup>



	Apr-Jun 2010	Apr-Jun 2011	Apr-Jun 2012	Apr-Jun 2013	Apr-Jun 2014	Apr-Jun 2015	Apr-Jun 2016	Apr-Jun 2017
Median time to start treatment <sup>4</sup> (minutes)	12	11	14	10	13	13	10	14
90th percentile time to start treatment <sup>5</sup> (minutes)	59	66	63	58	64	68	50	*

(†) Data points are not shown in graphs for quarters when patient numbers are too small.

(‡) Caution is advised when interpreting abrupt changes over time at the hospital level. For example, performance before and after transition to a new information system is not directly comparable. For more information, see Background Paper: Approaches to reporting time measures of emergency department performance, December 2011.

## Kurri Kurri District Hospital: Time patients spent in the ED

April to June 2017

All presentations:<sup>1</sup> 944 patients

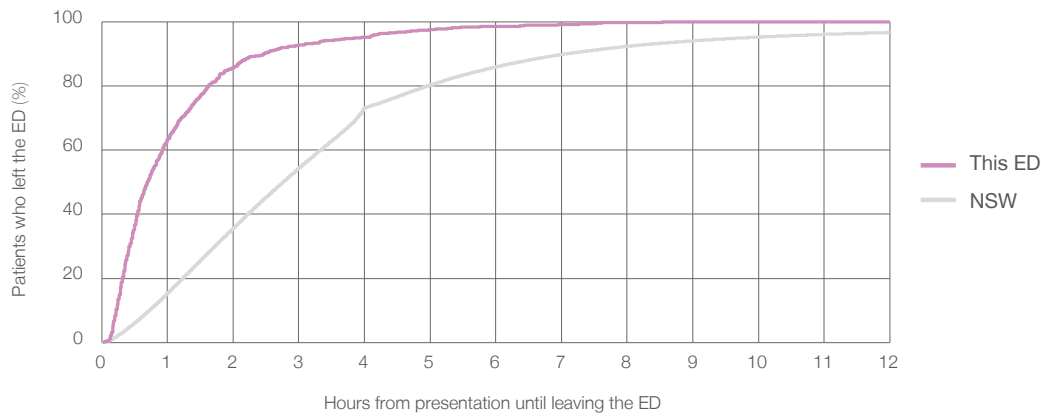
Presentations used to calculate time to leaving the ED:<sup>6</sup> 944 patients

Median time spent in the ED<sup>8</sup> 0 hours and 42 minutes

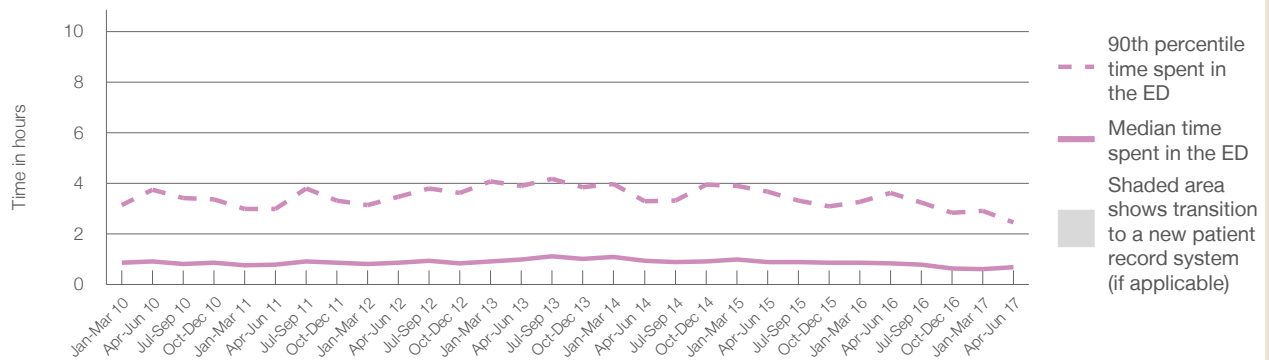
90th percentile time spent in the ED<sup>9</sup> 2 hours and 28 minutes

Same period last year	NSW (this period)
1,057	
1,057	
0 hours and 50 minutes	2 hours and 46 minutes
3 hours and 38 minutes	7 hours and 5 minutes

Percentage of patients who left the ED by time, April to June 2017



Time patients spent in the ED, by quarter, April 2012 to June 2017<sup>†‡</sup>



	Apr-Jun 2010	Apr-Jun 2011	Apr-Jun 2012	Apr-Jun 2013	Apr-Jun 2014	Apr-Jun 2015	Apr-Jun 2016	Apr-Jun 2017
Median time to leaving the ED <sup>8</sup> (hours, minutes)	0h 56m	0h 47m	0h 53m	1h 0m	0h 57m	0h 54m	0h 50m	0h 42m
90th percentile time to leaving the ED <sup>9</sup> (hours, minutes)	3h 45m	2h 59m	3h 28m	3h 55m	3h 18m	3h 40m	3h 38m	2h 28m

(†) Data points are not shown in graphs for quarters when patient numbers are too small.

(‡) Caution is advised when interpreting abrupt changes over time at the hospital level. For example, performance before and after transition to a new information system is not directly comparable. For more information, see Background Paper: Approaches to reporting time measures of emergency department performance, December 2011.

**Kurri Kurri District Hospital: Time patients spent in the ED**  
By mode of separation  
April to June 2017

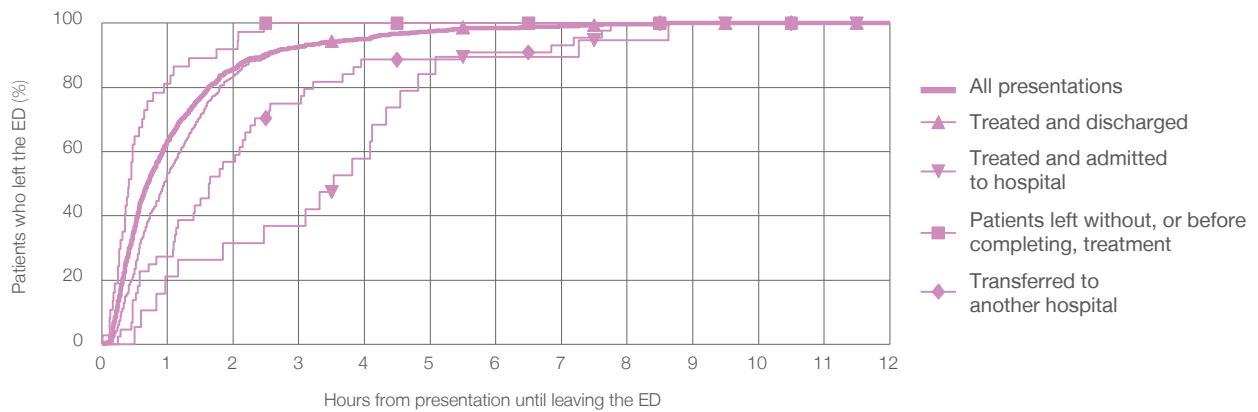
All presentations:<sup>1</sup> 944 patients

Presentations used to calculate time to leaving the ED:<sup>6</sup> 944 patients

Treated and discharged	519 (55.0%)
Treated and admitted to hospital	19 (2.0%)
Patient left without, or before completing, treatment	37 (3.9%)
Transferred to another hospital	44 (4.7%)
Other	325 (34.4%)

Same period last year	Change since one year ago
1,057	-10.7%
680	-23.7%
25	-24.0%
58	-36.2%
53	-17.0%
241	34.9%

Percentage of patients who left the ED by time and mode of separation, April to June 2017<sup>††</sup>



1 hour 2 hours 3 hours 4 hours 6 hours 8 hours 10 hours 12 hours

Treated and discharged	53.2%	83.6%	93.1%	94.8%	98.7%	99.8%	100%	100%
Treated and admitted to hospital	21.1%	31.6%	36.8%	57.9%	89.5%	94.7%	100%	100%
Patient left without, or before completing, treatment	81.1%	91.9%	100%	100%	100%	100%	100%	100%
Transferred to another hospital	27.3%	56.8%	75.0%	88.6%	90.9%	100%	100%	100%
All presentations	63.5%	85.7%	92.7%	95.1%	98.5%	99.8%	100%	100%

(†) Data points are not shown in graphs for quarters when patient numbers are too small.

(‡) Caution is advised when interpreting abrupt changes over time at the hospital level. For example, performance before and after transition to a new information system is not directly comparable. For more information, see Background Paper: Approaches to reporting time measures of emergency department performance, December 2011.



**Kurri Kurri District Hospital: Time spent in the ED**  
 Percentage of patients who spent four hours or less in the ED  
 April to June 2017

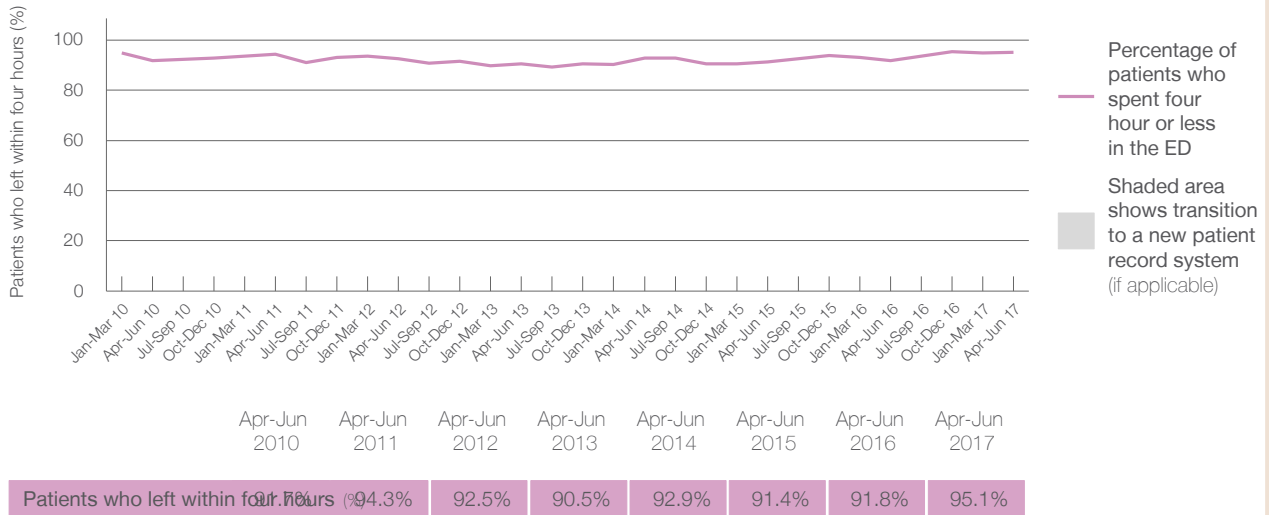
All presentations at the emergency department:<sup>1</sup> 944 patients  
 Presentations used to calculate time to leaving the ED:<sup>6</sup> 944 patients

Percentage of patients who spent four hours or less in the ED



	Same period last year	Change since one year ago
All presentations at the emergency department: <sup>1</sup> 944 patients	1,057	-10.7%
Presentations used to calculate time to leaving the ED: <sup>6</sup> 944 patients	1,057	-10.7%
Percentage of patients who spent four hours or less in the ED	91.8%	

Percentage of patients who spent four hours or less in the ED, by quarter, April 2012 to June 2017<sup>†‡</sup>



\* Suppressed due to small numbers and to protect privacy. Relevant graphs are also suppressed.  
 † Data points are not shown in graphs for quarters when patient numbers were too small.  
 ‡ Caution is advised when interpreting abrupt changes over time at the hospital level. For example, performance before and after transition to a new information system is not directly comparable. For more information see *Background Paper: Approaches to reporting time measures of emergency department performance, December 2011*.

- All emergency and non-emergency presentations at the emergency department (ED).
- All presentations that have a triage category and are coded as emergency presentations or unplanned return visits.
- Some patients are excluded from ED time measures due to calculation requirements. For details, see the *Technical Supplement: Emergency department measures, July to September 2016*.
- The median is the time by which half of patients started treatment. The other half of patients took equal to or longer than this time.
- The 90th percentile is the time by which 90% of patients started treatment. The final 10% of patients took equal to or longer than this time.
- All presentations that have a departure time.
- Transfer of care time refers to the period between arrival of patients at the ED by ambulance and the transfer of responsibility for their care from paramedics to ED staff in an ED treatment zone. For more information see *Spotlight on Measurement: measuring transfer of care from the ambulance to the emergency department*.
- The median is the time by which half of patients left the ED. The other half of patients took equal to or longer than this time.
- The 90th percentile is the time by which 90% of patients left the ED. The final 10% of patients took equal to or longer than this time.

**Note:** Presentation time is the earlier of times recorded for the start of clerical registration or the triage process.  
 Treatment time is the earliest time recorded when a healthcare professional provides medical care that is relevant to the patient's presenting problems. For patients who were treated and discharged, departure time is the time when treatment was completed. For all other patients, departure time is the time when the patient actually left the ED.

**Note:** All percentages are rounded and therefore percentages may not add to 100%.

**Sources:** ED data from Health Information Exchange, NSW Health (extracted 21 July 2017).  
 Transfer of care data from Transfer of Care Reporting System (extracted 21 July 2017).