

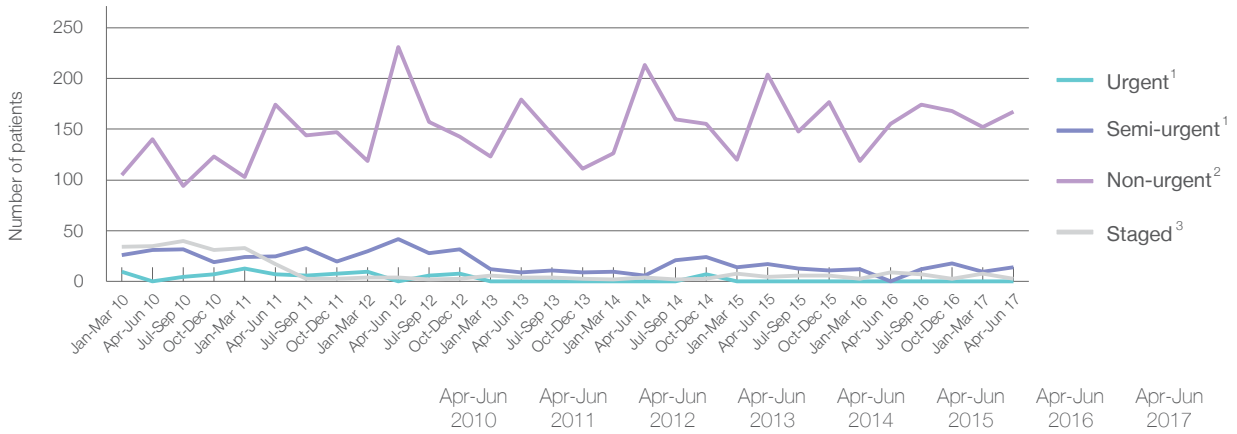
Bateman's Bay District Hospital: Elective surgery performed

April to June 2017

Patients who received elective surgery by urgency category: 184 patients



Patients who received elective surgery by urgency category by quarter, April 2012 to June 2017



	Apr-Jun 2010	Apr-Jun 2011	Apr-Jun 2012	Apr-Jun 2013	Apr-Jun 2014	Apr-Jun 2015	Apr-Jun 2016	Apr-Jun 2017
All categories	206	223	277	192	223	226	164	184
Urgent ¹	< 5	7	< 5	< 5	< 5	< 5	< 5	< 5
Semi-urgent ¹	31	25	42	9	6	17	< 5	14
Non-urgent ²	140	174	231	179	213	204	155	167
Staged ³	35	17	4	4	4	5	9	3

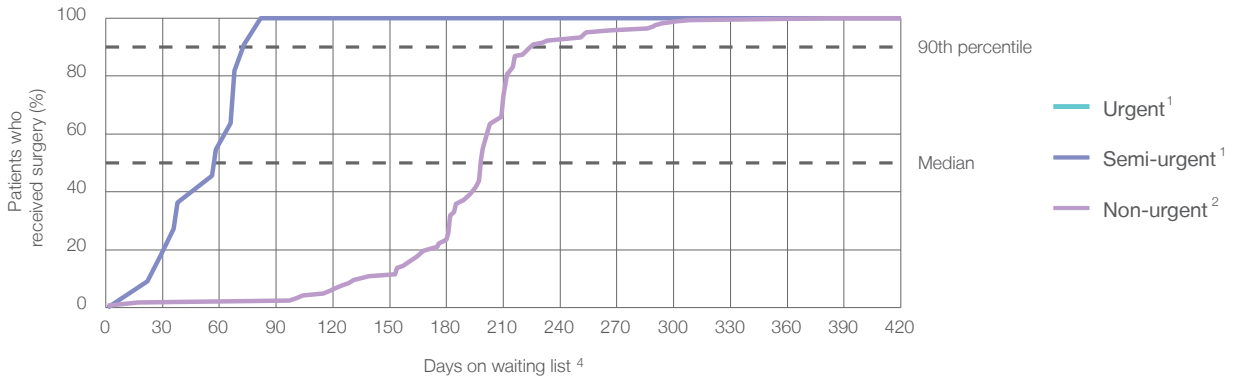
Bateman's Bay District Hospital: Time waited to receive elective surgery

April to June 2017

Percentage of patients who received surgery within the clinically recommended timeframe

	Recommended: (days)	Percentage	Same period last year	Peer group (this period)
1 Urgent¹	30 days	*	*	99.8%
2 Semi-urgent¹	90 days	100%	*	99.8%
3 Non-urgent²	365 days	99.4%	100%	99.3%

Percentage of patients who received elective surgery by waiting time (days)



Waiting time (days) for people who received surgery by urgency category

	Peer group (this period)	This hospital (same period last year)	Peer group (same period last year)
1 Urgent:¹ < 5			
Median time to receive surgery	13	*	12
90th percentile time to receive surgery	27	*	26
2 Semi-urgent:¹ 14 patients			
Median time to receive surgery	39	58 days	35
90th percentile time to receive surgery	77	*	72
3 Non-urgent:² 167 patients			
Median time to receive surgery	174	198 days	193
90th percentile time to receive surgery	327	226 days	322

Bateman's Bay District Hospital: Time waited to receive elective surgery

April to June 2017

Median ⁵ waiting time (days) for patients who received elective surgery by specialty of surgeon		Same period last year	Peer group (this period)
Cardiothoracic surgery	n/a (0 patients)	n/a	n/a
Ear, nose and throat surgery	n/a (0 patients)	n/a	127
General surgery	* (< 5 patients)	*	36
Gynaecology	n/a (0 patients)	n/a	32
Medical	n/a (0 patients)	n/a	49
Neurosurgery	n/a (0 patients)	n/a	n/a
Ophthalmology	198 days (152 patients)	211	183
Orthopaedic surgery	253 days (17 patients)	159	114
Plastic surgery	n/a (0 patients)	n/a	n/a
Urology	37 days (13 patients)	28	33
Vascular surgery	n/a (0 patients)	n/a	191

Median ⁵ waiting time (days) for patients who received elective surgery by common procedures ⁷		Same period last year	Peer group (this period)
Abdominal hysterectomy	n/a (0 patients)	n/a	43
Cataract extraction	198 days (150 patients)	211	193
Cholecystectomy	n/a (0 patients)	n/a	57
Coronary artery bypass graft	n/a (0 patients)	n/a	n/a
Cystoscopy	* (8 patients)	*	21
Haemorrhoidectomy	n/a (0 patients)	n/a	*
Hysteroscopy	n/a (0 patients)	n/a	28
Inguinal herniorrhaphy	n/a (0 patients)	n/a	64
Myringoplasty / Tympanoplasty	n/a (0 patients)	n/a	*
Myringotomy	n/a (0 patients)	n/a	*
Other - General	n/a (0 patients)	*	29
Prostatectomy	* (< 5 patients)	*	80
Septoplasty	n/a (0 patients)	n/a	312
Tonsillectomy	n/a (0 patients)	n/a	154
Total hip replacement	n/a (0 patients)	n/a	n/a
Total knee replacement	n/a (0 patients)	n/a	n/a
Varicose veins stripping and ligation	n/a (0 patients)	n/a	198

Bateman's Bay District Hospital: Elective surgery waiting list

April to June 2017

Patients ready for surgery on waiting list at start of quarter: 286 patients

Patients ready for surgery on waiting list at end of quarter: 298 patients

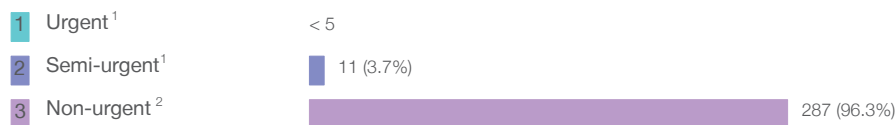
Patients not ready for surgery⁸ on waiting list at end of quarter: 35 patients

	Same period last year	Change since one year ago
Patients ready for surgery on waiting list at start of quarter	362	-21.0%
Patients ready for surgery on waiting list at end of quarter	391	-23.8%
Patients not ready for surgery ⁸ on waiting list at end of quarter	49	-28.6%

Bateman's Bay District Hospital: Patients ready for elective surgery

as at 30th June 2017

Patients ready for surgery on waiting list by urgency category: 298 patients



	Same period last year	Change since one year ago
Urgent ¹	< 5	*
Semi-urgent ¹	6	125.0%
Non-urgent ²	385	-25.5%

Bateman's Bay District Hospital: Patients ready for elective surgery

as at 30th June 2017

Patients ready for elective surgery by specialty of surgeon: 298 patients

	As at 30 Jun 2017	Same time last year	Change since one year ago
All specialties	298	391	-23.8%
Cardiothoracic surgery	0	0	n/a
Ear, nose and throat surgery	0	0	n/a
General surgery	0	0	n/a
Gynaecology	0	0	n/a
Medical	0	0	n/a
Neurosurgery	0	0	n/a
Ophthalmology	247	328	-24.7%
Orthopaedic surgery	26	42	-38.1%
Plastic surgery	0	0	n/a
Urology	25	21	19.0%
Vascular surgery	0	0	n/a

Patients ready for elective surgery for common procedures ⁷

	As at 30 Jun 2017	Same time last year	Change since one year ago
Abdominal hysterectomy	0	< 5	n/a
Cataract extraction	247	326	-24.2%
Cholecystectomy	0	< 5	n/a
Coronary artery bypass graft	0	< 5	n/a
Cystoscopy	7	< 5	*
Haemorrhoidectomy	0	< 5	n/a
Hysteroscopy	0	< 5	n/a
Inguinal herniorrhaphy	0	< 5	n/a
Myringoplasty / Tympanoplasty	0	< 5	n/a
Myringotomy	0	< 5	n/a
Other - General	0	< 5	n/a
Prostatectomy	9	8	12.5%
Septoplasty	0	< 5	n/a
Tonsillectomy	0	< 5	n/a
Total hip replacement	0	< 5	n/a
Total knee replacement	0	< 5	n/a
Varicose veins stripping and ligation	0	< 5	n/a

Bateman's Bay District Hospital: Patients ready for elective surgery as at 30th June 2017

Patients ready for elective surgery, on the waiting list for longer than 12 months

	As at 30 Jun 2017	Same time last year
All specialties	0	0

* Suppressed due to small numbers and to protect privacy. Relevant graphs are also suppressed.

< 5 Less than five patients. For measures by urgency category, counts are included in an adjacent category. Relevant graphs are also suppressed.

1. Excluding staged procedures.
2. Excluding staged procedures and cystoscopy.
3. Including non-urgent cystoscopy.
4. Excludes the total number of days the patient was coded as 'not ready for surgery'.
5. This is the number of days it took for half of patients who received elective surgery during the period to be admitted and receive their surgery. The other half took equal to or longer than the median to be admitted for surgery.
6. This is the number of days it took for 90% of patients who received elective surgery during the period to be admitted and receive their surgery. The final 10% of patients took equal to or longer than the 90th percentile.
7. The procedures included in this list are procedures which are high volume; some may be associated with long waiting periods. For a description of these procedures see *Elective Surgery Glossary of Common Procedures, December 2012*.
8. Includes staged procedures, non-urgent cystoscopy, and patients currently not available for personal reasons.

For more information: For details of methods, see the *Technical Supplement: Elective surgery measures, July to September 2016*.

Note: All percentages rounded to whole numbers and therefore percentages may not add to 100%.

Source: Waiting List Collection On-Line System, NSW Health (extracted 18 July 2017.).