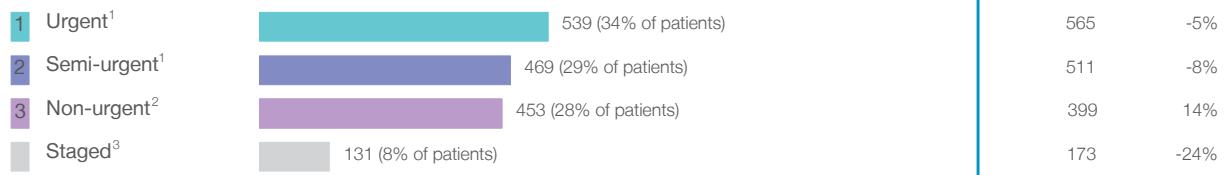


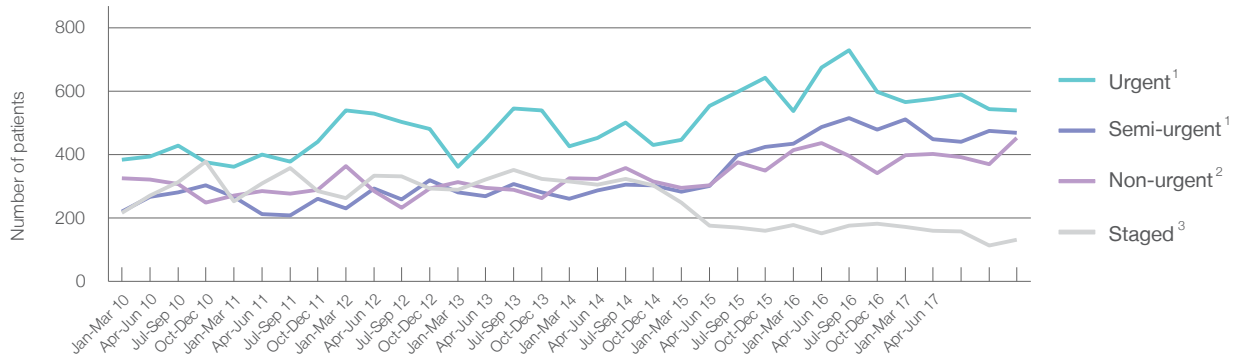
## Wollongong Hospital: Elective surgery performed

January to March 2018

Patients who received elective surgery by urgency category: 1,592 patients



Patients who received elective surgery by urgency category by quarter, January 2013 to March 2018



|                          | Jan-Mar 2010 | Jan-Mar 2011 | Jan-Mar 2012 | Jan-Mar 2013 | Jan-Mar 2014 | Jan-Mar 2015 | Jan-Mar 2016 | Jan-Mar 2017 | Jan-Mar 2018 |
|--------------------------|--------------|--------------|--------------|--------------|--------------|--------------|--------------|--------------|--------------|
| All categories           | 1,146        | 1,152        | 1,397        | 1,247        | 1,329        | 1,273        | 1,565        | 1,648        | 1,592        |
| Urgent <sup>1</sup>      | 384          | 361          | 540          | 362          | 426          | 446          | 537          | 565          | 539          |
| Semi-urgent <sup>1</sup> | 220          | 268          | 230          | 282          | 262          | 284          | 435          | 511          | 469          |
| Non-urgent <sup>2</sup>  | 326          | 271          | 364          | 314          | 326          | 295          | 415          | 399          | 453          |
| Staged <sup>3</sup>      | 216          | 252          | 263          | 289          | 315          | 248          | 178          | 173          | 131          |

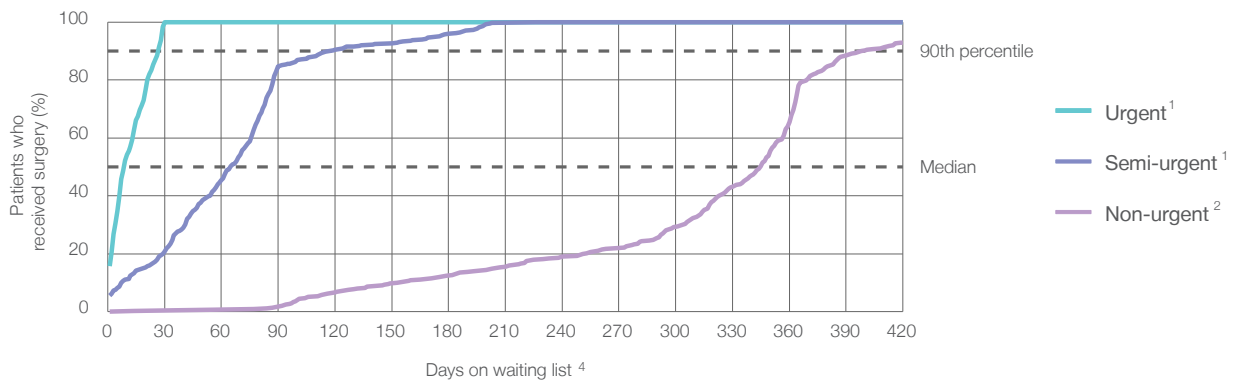
## Wollongong Hospital: Time waited to receive elective surgery

January to March 2018

Percentage of patients who received surgery within the clinically recommended timeframe

|   |                          |                       |       |       |       |
|---|--------------------------|-----------------------|-------|-------|-------|
| 1 | Urgent <sup>1</sup>      | Recommended: 30 days  | 100%  | 99.8% | 99.7% |
| 2 | Semi-urgent <sup>1</sup> | Recommended: 90 days  | 84.6% | 93.7% | 93.1% |
| 3 | Non-urgent <sup>2</sup>  | Recommended: 365 days | 78.1% | 94.2% | 91.4% |

Percentage of patients who received elective surgery by waiting time (days)



Waiting time (days) for people who received surgery by urgency category

|   |   |                                |     |     |     |
|---|---|--------------------------------|-----|-----|-----|
| 1 | Urgent: <sup>1</sup> 539 patients       |                                |     |     |     |
|   | Median time to receive surgery          | <div><div></div>9 days</div>   | 9   | 8   | 8   |
|   | 90th percentile time to receive surgery | <div><div></div>27 days</div>  | 25  | 27  | 25  |
| 2 | Semi-urgent: <sup>1</sup> 469 patients  |                                |     |     |     |
|   | Median time to receive surgery          | <div><div></div>65 days</div>  | 45  | 57  | 42  |
|   | 90th percentile time to receive surgery | <div><div></div>119 days</div> | 87  | 89  | 85  |
| 3 | Non-urgent: <sup>2</sup> 453 patients   |                                |     |     |     |
|   | Median time to receive surgery          | <div><div></div>345 days</div> | 190 | 352 | 177 |
|   | 90th percentile time to receive surgery | <div><div></div>398 days</div> | 363 | 364 | 358 |

## Wollongong Hospital: Time waited to receive elective surgery

January to March 2018

### Median<sup>5</sup> waiting time (days) for patients who received elective surgery by specialty of surgeon

|                              |                         | Same period last year | Peer group (this period) |
|------------------------------|-------------------------|-----------------------|--------------------------|
| Cardiothoracic surgery       | n/a (0 patients)        | n/a                   | 23                       |
| Ear, nose and throat surgery | 292 days (287 patients) | 332                   | 191                      |
| General surgery              | 23 days (240 patients)  | 26                    | 31                       |
| Gynaecology                  | 58 days (132 patients)  | 31                    | 32                       |
| Medical                      | n/a (0 patients)        | n/a                   | 14                       |
| Neurosurgery                 | 52 days (82 patients)   | 40                    | 63                       |
| Ophthalmology                | n/a (0 patients)        | *                     | 152                      |
| Orthopaedic surgery          | 113 days (365 patients) | 45                    | 83                       |
| Plastic surgery              | 20 days (36 patients)   | 37                    | 23                       |
| Urology                      | 36 days (329 patients)  | 39                    | 39                       |
| Vascular surgery             | 16 days (121 patients)  | 19                    | 22                       |

### Median<sup>5</sup> waiting time (days) for patients who received elective surgery by common procedures<sup>7</sup>

|                                       |                         | Same period last year | Peer group (this period) |
|---------------------------------------|-------------------------|-----------------------|--------------------------|
| Abdominal hysterectomy                | 350 days (15 patients)  | *                     | 35                       |
| Cataract extraction                   | n/a (0 patients)        | n/a                   | 180                      |
| Cholecystectomy                       | 49 days (24 patients)   | 29                    | 59                       |
| Coronary artery bypass graft          | n/a (0 patients)        | n/a                   | 42                       |
| Cystoscopy                            | 35 days (138 patients)  | 32                    | 32                       |
| Haemorrhoidectomy                     | * (< 5 patients)        | *                     | 83                       |
| Hysteroscopy                          | 58 days (57 patients)   | 30                    | 43                       |
| Inguinal herniorrhaphy                | * (< 5 patients)        | *                     | 76                       |
| Myringoplasty / Tympanoplasty         | * (7 patients)          | *                     | 335                      |
| Myringotomy                           | n/a (0 patients)        | *                     | 197                      |
| Other - General                       | 21 days (50 patients)   | 23                    | 21                       |
| Prostatectomy                         | 80 days (24 patients)   | 72                    | 70                       |
| Septoplasty                           | 356 days (34 patients)  | 355                   | 344                      |
| Tonsillectomy                         | 345 days (112 patients) | 355                   | 330                      |
| Total hip replacement                 | 317 days (41 patients)  | 82                    | 147                      |
| Total knee replacement                | 361 days (89 patients)  | 344                   | 253                      |
| Varicose veins stripping and ligation | * (< 5 patients)        | *                     | 79                       |

## Wollongong Hospital: Elective surgery waiting list

January to March 2018

Patients ready for surgery on waiting list at start of quarter: 2,384 patients

Patients ready for surgery on waiting list at end of quarter: 2,393 patients

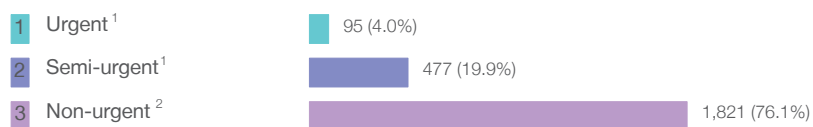
Patients not ready for surgery <sup>8</sup> on waiting list at end of quarter: 526 patients

| Same period<br>last year | Change since<br>one year ago |
|--------------------------|------------------------------|
| 2,064                    | 16%                          |
| 2,044                    | 17%                          |
| 465                      | 13%                          |

## Wollongong Hospital: Patients ready for elective surgery

as at 31st March 2018

Patients ready for surgery on waiting list by urgency category: 2,393 patients



| Same period<br>last year | Change since<br>one year ago |
|--------------------------|------------------------------|
| 86                       | 10%                          |
| 342                      | 39%                          |
| 1,616                    | 13%                          |

## Wollongong Hospital: Patients ready for elective surgery as at 31st March 2018

Patients ready for elective surgery by specialty of surgeon: 2,393 patients

|                              | As at 31 Mar 2018 | Same time last year | Change since one year ago |
|------------------------------|-------------------|---------------------|---------------------------|
| All specialties              | 2,393             | 2,044               | 17%                       |
| Cardiothoracic surgery       | 0                 | 0                   | n/a                       |
| Ear, nose and throat surgery | 756               | 758                 | 0%                        |
| General surgery              | 189               | 107                 | 77%                       |
| Gynaecology                  | 143               | 135                 | 6%                        |
| Medical                      | 0                 | 0                   | n/a                       |
| Neurosurgery                 | 84                | 70                  | 20%                       |
| Ophthalmology                | 0                 | < 5                 | *                         |
| Orthopaedic surgery          | 793               | 650                 | 22%                       |
| Plastic surgery              | 37                | 23                  | 61%                       |
| Urology                      | 350               | 247                 | 42%                       |
| Vascular surgery             | 41                | 52                  | -21%                      |

Patients ready for elective surgery for common procedures <sup>7</sup>

|                                       | As at 31 Mar 2018 | Same time last year | Change since one year ago |
|---------------------------------------|-------------------|---------------------|---------------------------|
| Abdominal hysterectomy                | 31                | 32                  | -3%                       |
| Cataract extraction                   | 0                 | < 5                 | n/a                       |
| Cholecystectomy                       | 17                | 13                  | 31%                       |
| Coronary artery bypass graft          | 0                 | < 5                 | n/a                       |
| Cystoscopy                            | 111               | 74                  | 50%                       |
| Haemorrhoidectomy                     | < 5               | < 5                 | n/a                       |
| Hysteroscopy                          | 35                | 31                  | 13%                       |
| Inguinal herniorrhaphy                | 23                | < 5                 | *                         |
| Myringoplasty / Tympanoplasty         | 20                | 28                  | -29%                      |
| Myringotomy                           | < 5               | < 5                 | *                         |
| Other - General                       | 34                | 17                  | 100%                      |
| Prostatectomy                         | 58                | 45                  | 29%                       |
| Septoplasty                           | 104               | 143                 | -27%                      |
| Tonsillectomy                         | 406               | 388                 | 5%                        |
| Total hip replacement                 | 210               | 143                 | 47%                       |
| Total knee replacement                | 406               | 305                 | 33%                       |
| Varicose veins stripping and ligation | < 5               | < 5                 | *                         |

## Wollongong Hospital: Patients ready for elective surgery as at 31st March 2018

Patients ready for elective surgery, on the waiting list for longer than 12 months

As at 31 Mar 2018      Same time last year

|                 |    |   |
|-----------------|----|---|
| All specialties | 50 | 0 |
|-----------------|----|---|

\* Suppressed due to small numbers and to protect privacy. Relevant graphs are also suppressed.

< 5 Less than five patients. For measures by urgency category, counts are included in an adjacent category. Relevant graphs are also suppressed.

1. Excluding staged procedures.
2. Excluding staged procedures and cystoscopy.
3. Including non-urgent cystoscopy.
4. Excludes the total number of days the patient was coded as 'not ready for surgery'.
5. This is the number of days it took for half of patients who received elective surgery during the period to be admitted and receive their surgery. The other half took equal to or longer than the median to be admitted for surgery.
6. This is the number of days it took for 90% of patients who received elective surgery during the period to be admitted and receive their surgery. The final 10% of patients took equal to or longer than the 90th percentile.
7. The procedures included in this list are procedures which are high volume; some may be associated with long waiting periods. For a description of these procedures see *Elective Surgery Glossary of Common Procedures, December 2012*.
8. Includes staged procedures, non-urgent cystoscopy, and patients currently not available for personal reasons.

For more information: For details of methods, see the *Technical Supplement: Elective surgery measures, January to March 2018*.

**Note:** All percentages rounded to whole numbers and therefore percentages may not add to 100%.

**Source:** Waiting List Collection On-Line System, NSW Health (extracted 13 April 2018.).