

Moruya District Hospital: Emergency department (ED) overview

July to September 2018

All presentations:¹ 2,531 patients



Emergency presentations:² 2,377 patients

Same period last year	Change since one year ago
2,628	-4%
2,471	-4%

Moruya District Hospital: Time patients waited to start treatment³

July to September 2018

Triage 2 Emergency (e.g. chest pain, severe burns): 383 patients

Median time to start treatment⁴  7 minutes
90th percentile time to start treatment⁵  27 minutes

Triage 3 Urgent (e.g. moderate blood loss, dehydration): 922 patients

Median time to start treatment⁴  20 minutes
90th percentile time to start treatment⁵  67 minutes

Triage 4 Semi-urgent (e.g. sprained ankle, earache): 782 patients

Median time to start treatment⁴  25 minutes
90th percentile time to start treatment⁵  99 minutes

Triage 5 Non-urgent (e.g. small cuts or abrasions): 266 patients

Median time to start treatment⁴  28 minutes
90th percentile time to start treatment⁵  109 minutes

Same period last year	NSW (this period)
318	
8 minutes	8 minutes
30 minutes	28 minutes
896	
16 minutes	21 minutes
68 minutes	72 minutes
904	
24 minutes	26 minutes
98 minutes	105 minutes
332	
23 minutes	22 minutes
99 minutes	103 minutes

Moruya District Hospital: Time from presentation until leaving the ED

July to September 2018

Attendances used to calculate time to leaving the ED:⁶ 2,530 patients

Percentage of patients who spent four hours or less in the ED  76%

Same period last year	Change since one year ago
2,624	-4%
77%	

* Suppressed due to small number of patients and to protect privacy. Relevant graphs are also suppressed.

- All emergency and non-emergency attendances at the emergency department (ED).
- All attendances that have a triage category and are coded as emergency presentations or unplanned return visits.
- Some patients are excluded from ED time measures due to calculation requirements. For details, see the *Technical Supplement: Emergency department measures, January to March 2018*.
- The median is the time by which half of patients started treatment. The other half of patients waited equal to or longer than this time.
- The 90th percentile is the time by which 90% of patients started treatment. The final 10% of patients waited equal to or longer than this time.
- All presentations that have a departure time.

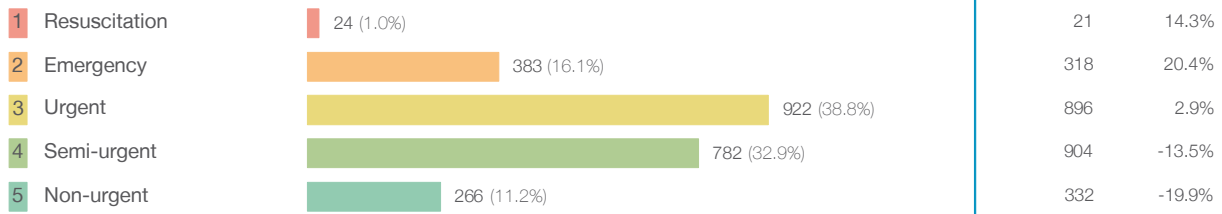
Note: Presentation time is the earlier time recorded for clerical registration or the triage process. Treatment time is the earliest time recorded when a healthcare professional provides medical care relevant to the patient's presenting problems.

Source: Health Information Exchange, NSW Health (extracted 16 October 2018).

Moruya District Hospital: Patients presenting to the emergency department July to September 2018

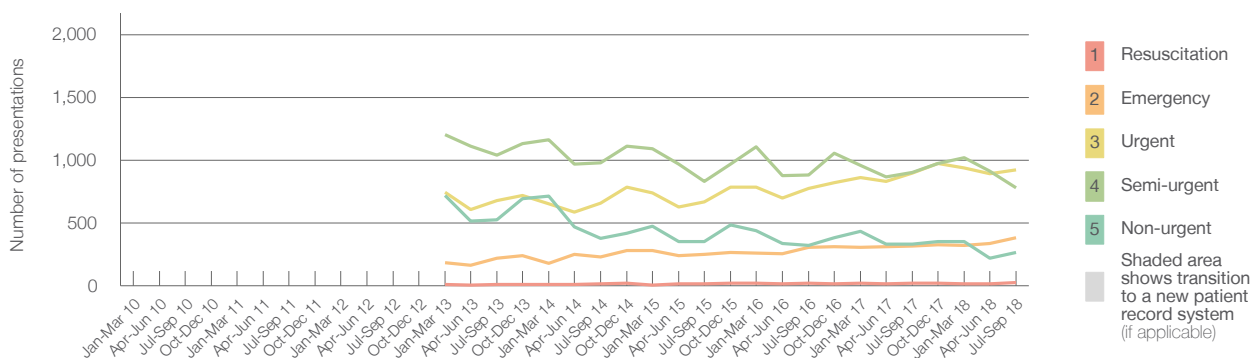
All presentations:¹ 2,531 patients

Emergency presentations² by triage category: 2,377 patients



Same period last year	Change since one year ago
2,628	-4%
2,471	-4%
21	14.3%
318	20.4%
896	2.9%
904	-13.5%
332	-19.9%

Emergency presentations² by quarter, January 2010 to September 2018 † §



	Jul-Sep 2010	Jul-Sep 2011	Jul-Sep 2012	Jul-Sep 2013	Jul-Sep 2014	Jul-Sep 2015	Jul-Sep 2016	Jul-Sep 2017	Jul-Sep 2018
Resuscitation				7	13	14	21	21	24
Emergency				219	227	251	307	318	383
Urgent				679	658	669	774	896	922
Semi-urgent				1,038	981	832	880	904	782
Non-urgent				527	378	352	321	332	266
All emergency presentations				2,470	2,257	2,118	2,303	2,471	2,377

Moruya District Hospital: Patients arriving by ambulance July to September 2018

July to September 2018

Arrivals used to calculate transfer of care time:⁷ 515 patients

ED Transfer of care time



Same period last year	Change since one year ago
607	
11 minutes	1 minute
28 minutes	-1 minute

(†) Data points are not shown in graphs for quarters when patient numbers are too small.

(‡) Caution is advised when interpreting abrupt changes over time at the hospital level. For example, performance before and after transition to a new information system is not directly comparable. For more information, see Background Paper: Approaches to reporting time measures of emergency department performance, December 2011.

(§) Quarterly information for this hospital is shown where data are available from the Health Information Exchange, NSW Health. For more information, see Background Paper: Approaches to reporting time measures of emergency department performance, December 2011.

Moruya District Hospital: Time patients waited to start treatment, triage 2 July to September 2018

Triage 2 Emergency (e.g. chest pain, severe burns)

Number of triage 2 patients: 383

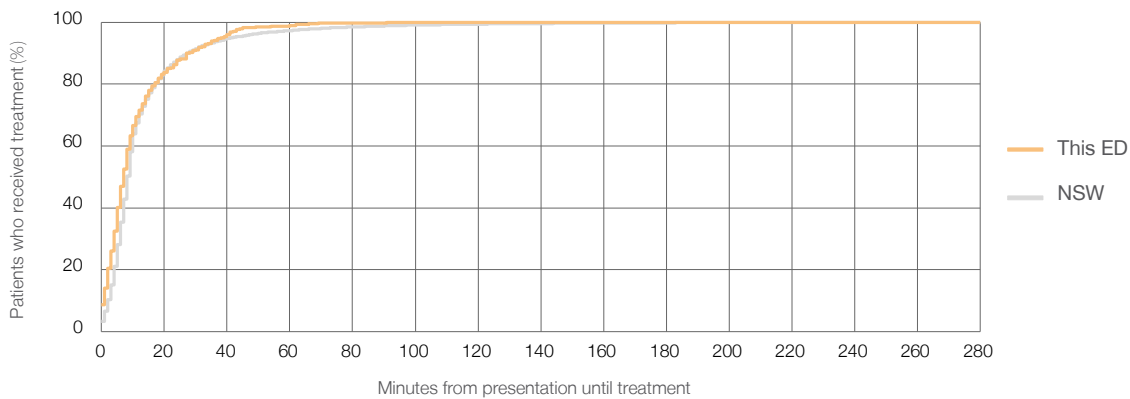
Number of triage 2 patients used to calculate waiting time:³ 381

Median time to start treatment⁴ 7 minutes

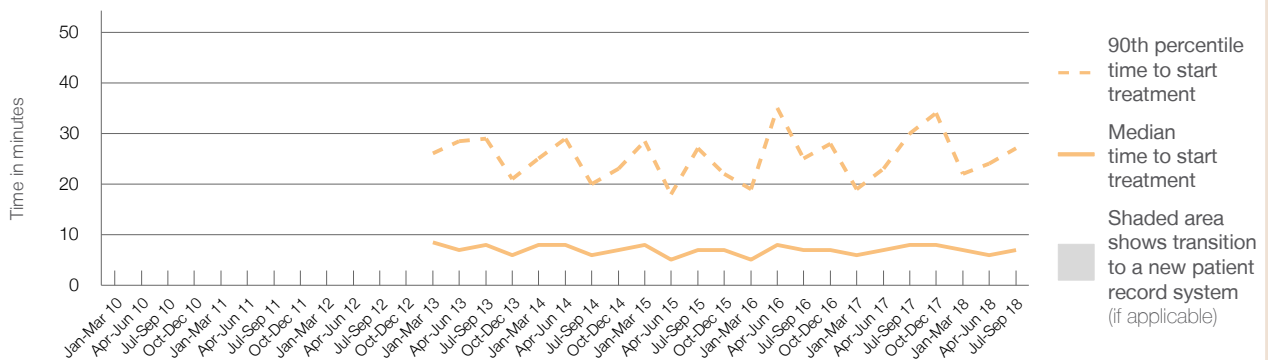
90th percentile time to start treatment⁵ 27 minutes

Same period last year	NSW (this period)
318	
309	
8 minutes	8 minutes
30 minutes	28 minutes

Percentage of triage 2 patients who received treatment by time, July to September 2018



Time patients waited to start treatment (minutes) for triage 2 patients, January 2010 to September 2018^{†‡§}



	Jul-Sep 2010	Jul-Sep 2011	Jul-Sep 2012	Jul-Sep 2013	Jul-Sep 2014	Jul-Sep 2015	Jul-Sep 2016	Jul-Sep 2017	Jul-Sep 2018
Median time to start treatment ⁴ (minutes)				8	6	7	7	8	7
90th percentile time to start treatment ⁵ (minutes)				29	20	27	25	30	27

(†) Data points are not shown in graphs for quarters when patient numbers are too small.

(‡) Caution is advised when interpreting abrupt changes over time at the hospital level. For example, performance before and after transition to a new information system is not directly comparable. For more information, see Background Paper: Approaches to reporting time measures of emergency department performance, December 2011.

(§) Quarterly information for this hospital is shown where data are available from the Health Information Exchange, NSW Health. For more information, see Background Paper: Approaches to reporting time measures of emergency department performance, December 2011.

Moruya District Hospital: Time patients waited to start treatment, triage 3 July to September 2018

Triage 3 Urgent (e.g. moderate blood loss, dehydration)

Number of triage 3 patients: 922

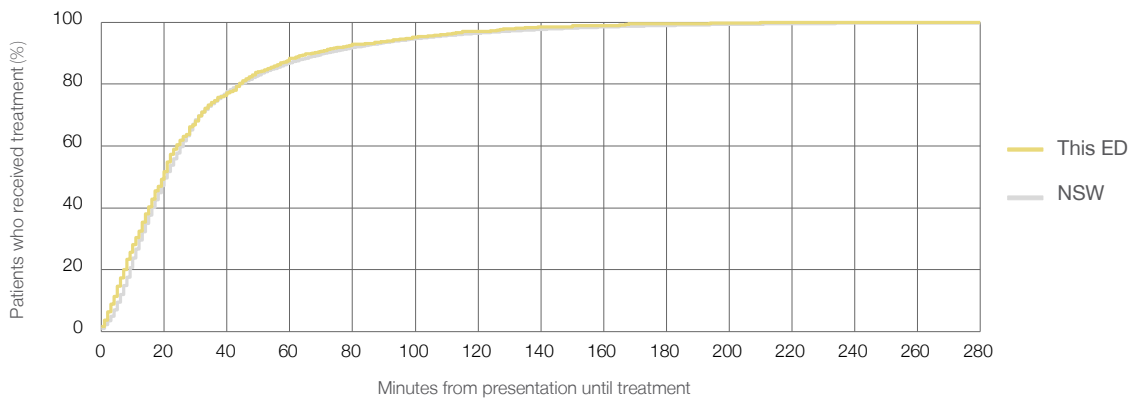
Number of triage 3 patients used to calculate waiting time:³ 903

Median time to start treatment⁴ 20 minutes

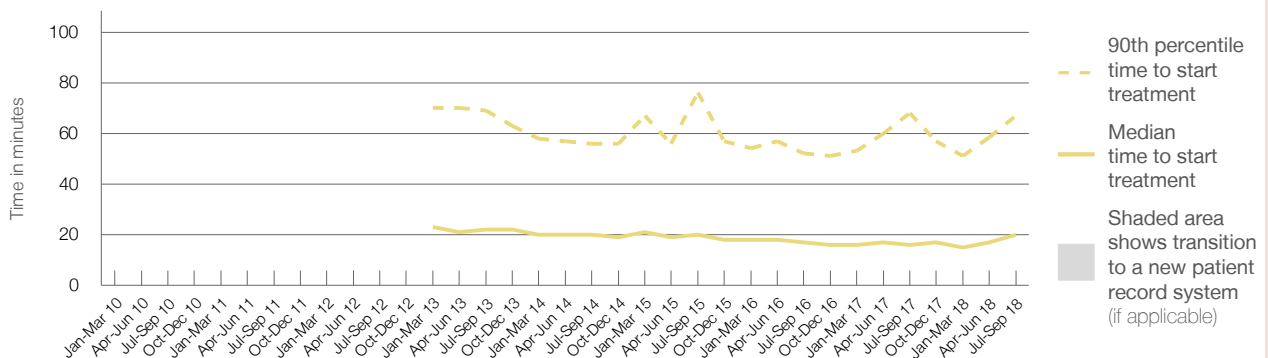
90th percentile time to start treatment⁵ 67 minutes

Same period last year	NSW (this period)
896	
861	
16 minutes	21 minutes
68 minutes	72 minutes

Percentage of triage 3 patients who received treatment by time, July to September 2018



Time patients waited to start treatment (minutes) for triage 3 patients, January 2010 to September 2018^{†‡§}



	Jul-Sep 2010	Jul-Sep 2011	Jul-Sep 2012	Jul-Sep 2013	Jul-Sep 2014	Jul-Sep 2015	Jul-Sep 2016	Jul-Sep 2017	Jul-Sep 2018
Median time to start treatment ⁴ (minutes)				22	20	20	17	16	20
90th percentile time to start treatment ⁵ (minutes)				69	56	76	52	68	67

(†) Data points are not shown in graphs for quarters when patient numbers are too small.

(‡) Caution is advised when interpreting abrupt changes over time at the hospital level. For example, performance before and after transition to a new information system is not directly comparable. For more information, see Background Paper: Approaches to reporting time measures of emergency department performance, December 2011.

(§) Quarterly information for this hospital is shown where data are available from the Health Information Exchange, NSW Health. For more information, see Background Paper: Approaches to reporting time measures of emergency department performance, December 2011.

Moruya District Hospital: Time patients waited to start treatment, triage 4 July to September 2018

Triage 4 Semi-urgent (e.g. sprained ankle, earache)

Number of triage 4 patients: 782

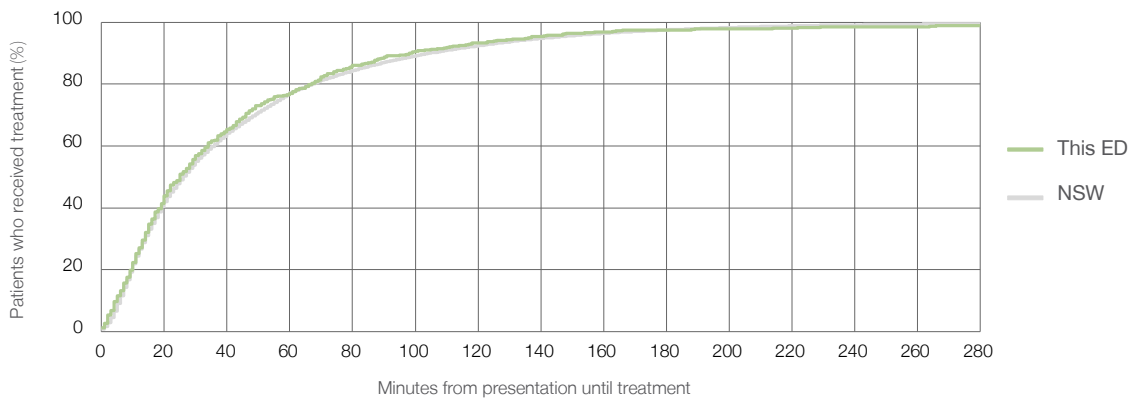
Number of triage 4 patients used to calculate waiting time:³ 677

Median time to start treatment⁴ 25 minutes

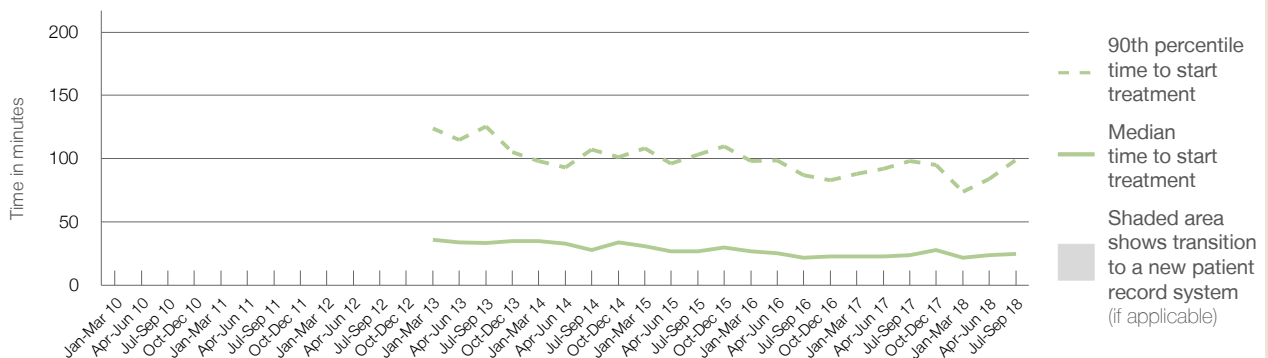
90th percentile time to start treatment⁵ 99 minutes

Same period last year	NSW (this period)
904	785
24 minutes	26 minutes
98 minutes	105 minutes

Percentage of triage 4 patients who received treatment by time, July to September 2018



Time patients waited to start treatment (minutes) for triage 4 patients, January 2010 to September 2018^{†‡§}



	Jul-Sep 2010	Jul-Sep 2011	Jul-Sep 2012	Jul-Sep 2013	Jul-Sep 2014	Jul-Sep 2015	Jul-Sep 2016	Jul-Sep 2017	Jul-Sep 2018
Median time to start treatment ⁴ (minutes)				34	28	27	22	24	25
90th percentile time to start treatment ⁵ (minutes)				126	107	103	87	98	99

(†) Data points are not shown in graphs for quarters when patient numbers are too small.

(‡) Caution is advised when interpreting abrupt changes over time at the hospital level. For example, performance before and after transition to a new information system is not directly comparable. For more information, see Background Paper: Approaches to reporting time measures of emergency department performance, December 2011.

(§) Quarterly information for this hospital is shown where data are available from the Health Information Exchange, NSW Health. For more information, see Background Paper: Approaches to reporting time measures of emergency department performance, December 2011.

Moruya District Hospital: Time patients waited to start treatment, triage 5 July to September 2018

Triage 5 Non-urgent (e.g. small cuts or abrasions)

Number of triage 5 patients: 266

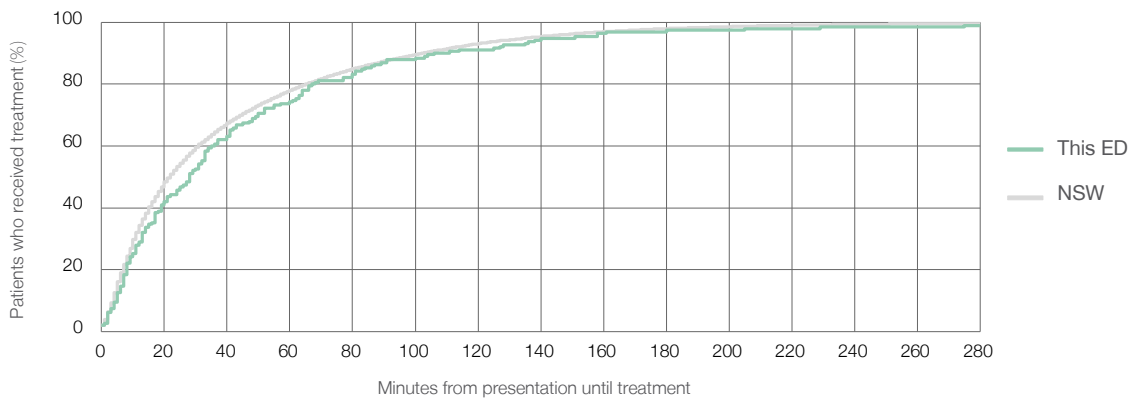
Number of triage 5 patients used to calculate waiting time:³ 190

Median time to start treatment⁴ 28 minutes

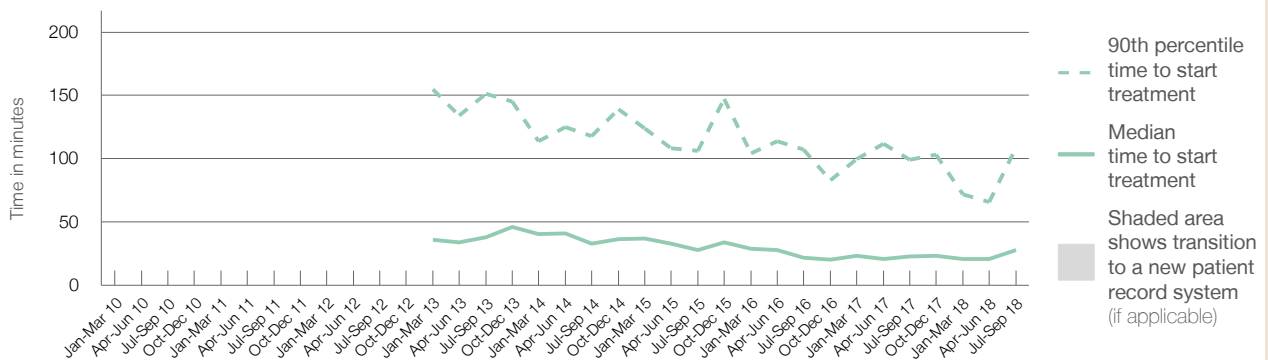
90th percentile time to start treatment⁵ 109 minutes

Same period last year	NSW (this period)
332	238
23 minutes	22 minutes
99 minutes	103 minutes

Percentage of triage 5 patients who received treatment by time, July to September 2018



Time patients waited to start treatment (minutes) for triage 5 patients, January 2010 to September 2018^{†‡§}



	Jul-Sep 2010	Jul-Sep 2011	Jul-Sep 2012	Jul-Sep 2013	Jul-Sep 2014	Jul-Sep 2015	Jul-Sep 2016	Jul-Sep 2017	Jul-Sep 2018
Median time to start treatment ⁴ (minutes)				38	33	28	22	23	28
90th percentile time to start treatment ⁵ (minutes)				151	118	106	107	99	109

(†) Data points are not shown in graphs for quarters when patient numbers are too small.

(‡) Caution is advised when interpreting abrupt changes over time at the hospital level. For example, performance before and after transition to a new information system is not directly comparable. For more information, see Background Paper: Approaches to reporting time measures of emergency department performance, December 2011.

(§) Quarterly information for this hospital is shown where data are available from the Health Information Exchange, NSW Health. For more information, see Background Paper: Approaches to reporting time measures of emergency department performance, December 2011.

Moruya District Hospital: Time patients spent in the ED

July to September 2018

All presentations:¹ 2,531 patients

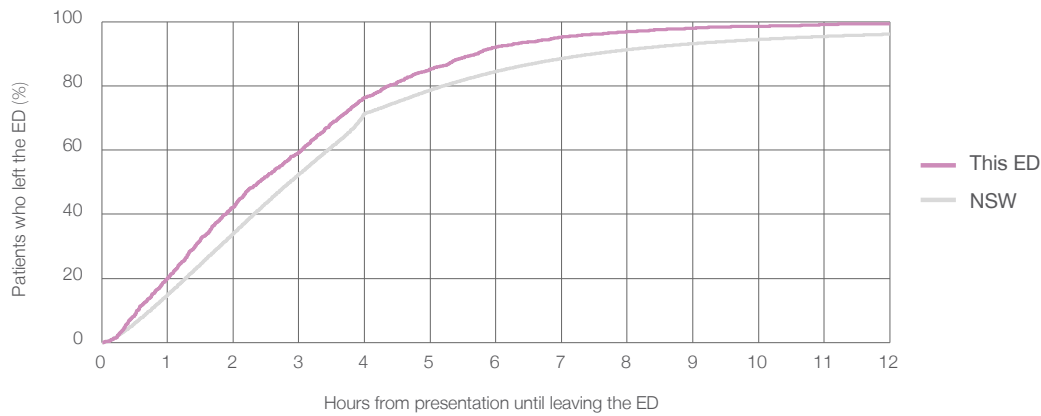
Presentations used to calculate time to leaving the ED:⁶ 2,530 patients

Median time spent in the ED⁸ 2 hours and 24 minutes

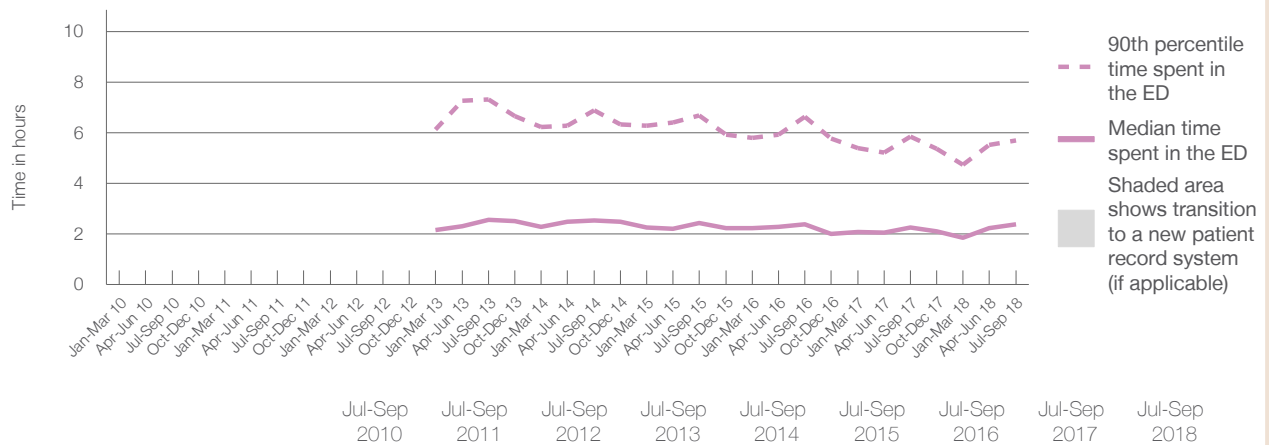
90th percentile time spent in the ED⁹ 5 hours and 43 minutes

Same period last year	NSW (this period)
2,628	
2,624	
2 hours and 15 minutes	2 hours and 52 minutes
5 hours and 51 minutes	7 hours and 30 minutes

Percentage of patients who left the ED by time, July to September 2018



Time patients spent in the ED, by quarter, January 2010 to September 2018^{††§}



	Jul-Sep 2010	Jul-Sep 2011	Jul-Sep 2012	Jul-Sep 2013	Jul-Sep 2014	Jul-Sep 2015	Jul-Sep 2016	Jul-Sep 2017	Jul-Sep 2018
Median time spent in the ED ⁸ (hours, minutes)				2h 34m	2h 32m	2h 27m	2h 24m	2h 15m	2h 24m
90th percentile time spent in the ED ⁹ (hours, minutes)				7h 19m	6h 53m	6h 42m	6h 38m	5h 51m	5h 43m

(†) Data points are not shown in graphs for quarters when patient numbers are too small.

(‡) Caution is advised when interpreting abrupt changes over time at the hospital level. For example, performance before and after transition to a new information system is not directly comparable. For more information, see Background Paper: Approaches to reporting time measures of emergency department performance, December 2011.

(§) Quarterly information for this hospital is shown where data are available from the Health Information Exchange, NSW Health. For more information, see Background Paper: Approaches to reporting time measures of emergency department performance, December 2011.

Moruya District Hospital: Time patients spent in the ED
By mode of separation
July to September 2018

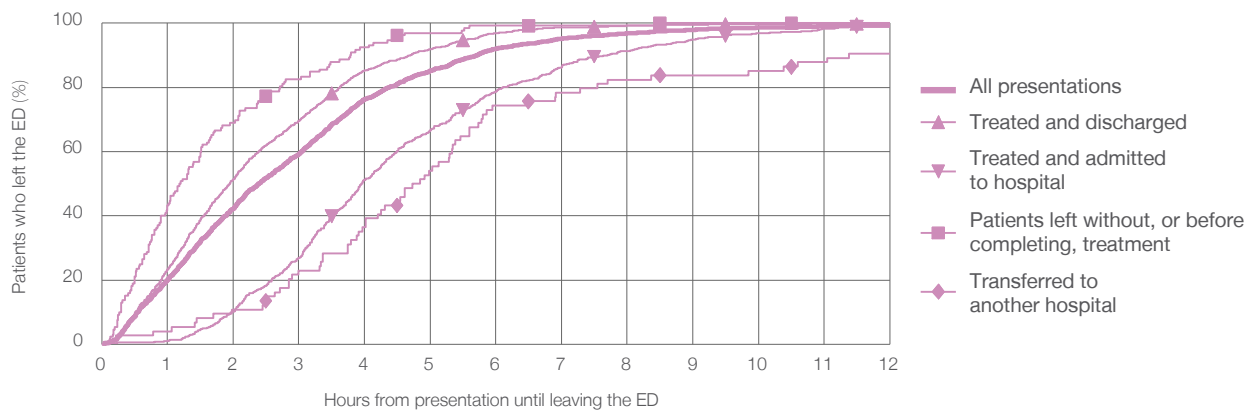
All presentations:¹ 2,531 patients

Presentations used to calculate time to leaving the ED:⁶ 2,530 patients

Treated and discharged	1,632 (64.5%)
Treated and admitted to hospital	618 (24.4%)
Patient left without, or before completing, treatment	132 (5.2%)
Transferred to another hospital	74 (2.9%)
Other	75 (3.0%)

Same period last year	Change since one year ago
2,624	-4%
1,848	-11.7%
498	24.1%
111	18.9%
70	5.7%
101	-25.7%

Percentage of patients who left the ED by time and mode of separation, July to September 2018^{†‡§}



1 hour 2 hours 3 hours 4 hours 6 hours 8 hours 10 hours 12 hours

	1 hour	2 hours	3 hours	4 hours	6 hours	8 hours	10 hours	12 hours
Treated and discharged	23.4%	51.3%	69.5%	85.3%	96.9%	99.2%	99.7%	99.8%
Treated and admitted to hospital	1.0%	10.0%	26.9%	51.2%	78.8%	91.4%	96.9%	98.9%
Patient left without, or before completing, treatment	43.2%	68.9%	82.6%	92.4%	99.2%	99.2%	100%	100%
Transferred to another hospital	4.1%	10.8%	23.0%	36.5%	74.3%	82.4%	85.1%	90.5%
All presentations	20.2%	42.3%	59.2%	76.3%	92.1%	96.8%	98.6%	99.3%

(†) Data points are not shown in graphs for quarters when patient numbers are too small.

(‡) Caution is advised when interpreting abrupt changes over time at the hospital level. For example, performance before and after transition to a new information system is not directly comparable. For more information, see Background Paper: Approaches to reporting time measures of emergency department performance, December 2011.

(§) Quarterly information for this hospital is shown where data are available from the Health Information Exchange, NSW Health. For more information, see Background Paper: Approaches to reporting time measures of emergency department performance, December 2011.

Moruya District Hospital: Time spent in the ED
 Percentage of patients who spent four hours or less in the ED
 July to September 2018

All presentations at the emergency department: ¹ 2,531 patients

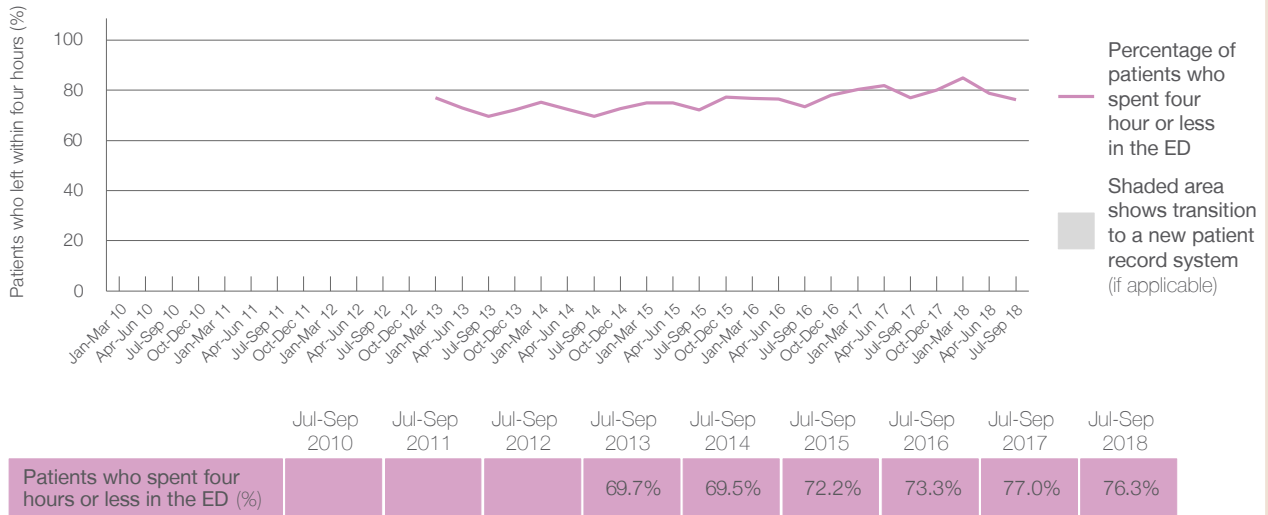
Presentations used to calculate time to leaving the ED: ⁶ 2,530 patients

Percentage of patients who spent four hours or less in the ED



	Same period last year	Change since one year ago
All presentations at the emergency department	2,628	-4%
Presentations used to calculate time to leaving the ED	2,624	-4%
Percentage of patients who spent four hours or less in the ED	77.0%	

Percentage of patients who spent four hours or less in the ED, by quarter, January 2010 to September 2018 ^{†‡§}



* Suppressed due to small numbers and to protect privacy. Relevant graphs are also suppressed.
 † Data points are not shown in graphs for quarters when patient numbers were too small.
 ‡ Caution is advised when interpreting abrupt changes over time at the hospital level. For example, performance before and after transition to a new information system is not directly comparable. For more information see *Background Paper: Approaches to reporting time measures of emergency department performance, December 2011*.
 § Quarterly information for this hospital is shown where data are available from the Health Information Exchange, NSW Health. For more information, see *Background Paper: Approaches to reporting time measures of emergency department performance, December 2011*.

- All emergency and non-emergency presentations at the emergency department (ED).
- All presentations that have a triage category and are coded as emergency presentations or unplanned return visits.
- Some patients are excluded from ED time measures due to calculation requirements. For details, see the *Technical Supplement: Emergency department measures, January to March 2018*.
- The median is the time by which half of patients started treatment. The other half of patients took equal to or longer than this time.
- The 90th percentile is the time by which 90% of patients started treatment. The final 10% of patients took equal to or longer than this time.
- All presentations that have a departure time.
- Transfer of care time refers to the period between arrival of patients at the ED by ambulance and the transfer of responsibility for their care from paramedics to ED staff in an ED treatment zone. For more information see *Spotlight on Measurement: measuring transfer of care from the ambulance to the emergency department*.
- The median is the time by which half of patients left the ED. The other half of patients took equal to or longer than this time.
- The 90th percentile is the time by which 90% of patients left the ED. The final 10% of patients took equal to or longer than this time.

Note: Presentation time is the earlier of times recorded for the start of clerical registration or the triage process. Treatment time is the earliest time recorded when a healthcare professional provides medical care that is relevant to the patient's presenting problems. For patients who were treated and discharged, departure time is the time when treatment was completed. For all other patients, departure time is the time when the patient actually left the ED.

Note: All percentages are rounded and therefore percentages may not add to 100%.

Sources: ED data from Health Information Exchange, NSW Health (extracted 16 October 2018).
 Transfer of care data from Transfer of Care Reporting System (extracted 16 October 2018).