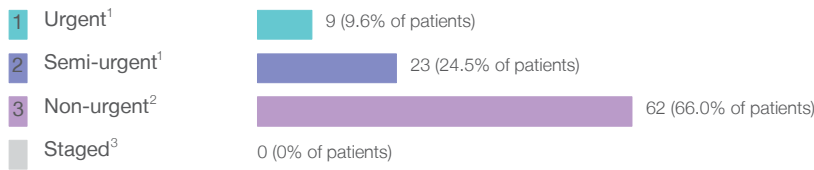


Moree District Hospital: Elective surgery performed

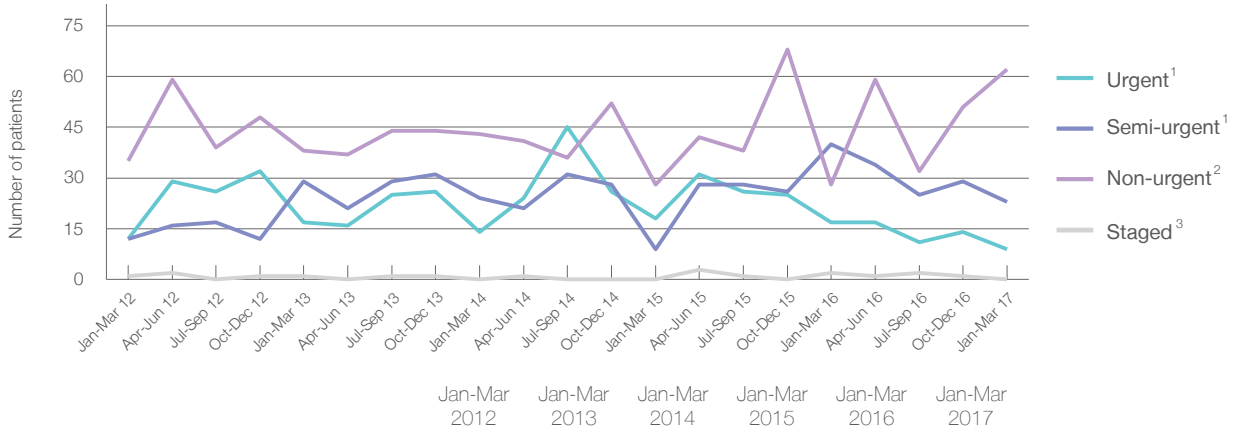
January to March 2017

Patients who received elective surgery by urgency category: 94 patients



Urgency Category	Same period last year	Change since one year ago
1 Urgent ¹	17	-47.1%
2 Semi-urgent ¹	40	-42.5%
3 Non-urgent ²	28	121.4%
Staged ³	2	-100.0%

Patients who received elective surgery by urgency category by quarter, January 2012 to March 2017



Urgency Category	Jan-Mar 2012	Jan-Mar 2013	Jan-Mar 2014	Jan-Mar 2015	Jan-Mar 2016	Jan-Mar 2017
All categories	60	85	81	55	87	94
Urgent ¹	12	17	14	18	17	9
Semi-urgent ¹	12	29	24	9	40	23
Non-urgent ²	35	38	43	28	28	62
Staged ³	1	1	0	0	2	0

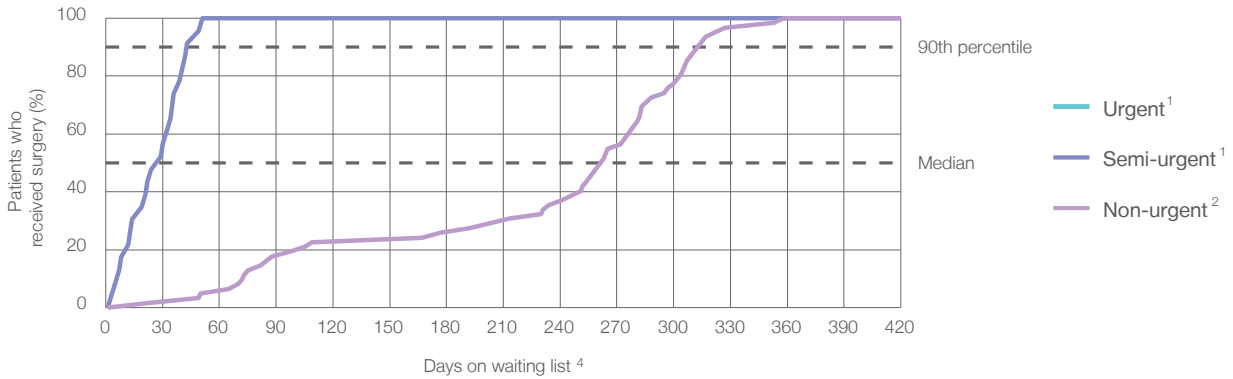
Moree District Hospital: Time waited to receive elective surgery

January to March 2017

Percentage of patients who received surgery within the clinically recommended timeframe

Urgency Category	Recommended Timeframe (days)	Percentage	Same period last year	Peer group (this period)
1 Urgent ¹	30 days	*	100%	99.8%
2 Semi-urgent ¹	90 days	100%	100%	99.4%
3 Non-urgent ²	365 days	100%	100%	99.6%

Percentage of patients who received elective surgery by waiting time (days)



Waiting time (days) for people who received surgery by urgency category

Urgency Category	Number of Patients	Median time to receive surgery (days)	90th percentile time to receive surgery (days)	Peer group (this period)	This hospital (same period last year)	Peer group (same period last year)
1 Urgent	9 patients	*	*	13	8	12
2 Semi-urgent	23 patients	29 days	*	41	33	38
3 Non-urgent	62 patients	263 days	*	179	256	202

Moree District Hospital: Time waited to receive elective surgery

January to March 2017

Median ⁵ waiting time (days) for patients who received elective surgery by specialty of surgeon		Same period last year	Peer group (this period)
Cardiothoracic surgery	n/a (0 patients)	n/a	n/a
Ear, nose and throat surgery	* (< 5 patients)	*	114
General surgery	30 days (42 patients)	19	36
Gynaecology	n/a (0 patients)	n/a	35
Medical	* (< 5 patients)	n/a	10
Neurosurgery	n/a (0 patients)	n/a	n/a
Ophthalmology	281 days (47 patients)	261	191
Orthopaedic surgery	* (< 5 patients)	*	89
Plastic surgery	n/a (0 patients)	n/a	n/a
Urology	n/a (0 patients)	n/a	52
Vascular surgery	n/a (0 patients)	n/a	158

Median ⁵ waiting time (days) for patients who received elective surgery by common procedures ⁷		Same period last year	Peer group (this period)
Abdominal hysterectomy	n/a (0 patients)	n/a	45
Cataract extraction	282 days (44 patients)	261	196
Cholecystectomy	* (< 5 patients)	*	39
Coronary artery bypass graft	n/a (0 patients)	n/a	n/a
Cystoscopy	n/a (0 patients)	n/a	37
Haemorrhoidectomy	* (< 5 patients)	n/a	73
Hysteroscopy	n/a (0 patients)	n/a	30
Inguinal herniorrhaphy	* (< 5 patients)	*	70
Myringoplasty / Tympanoplasty	n/a (0 patients)	n/a	*
Myringotomy	* (< 5 patients)	n/a	*
Other - General	* (< 5 patients)	n/a	27
Prostatectomy	n/a (0 patients)	n/a	71
Septoplasty	n/a (0 patients)	n/a	227
Tonsillectomy	* (< 5 patients)	*	167
Total hip replacement	n/a (0 patients)	n/a	n/a
Total knee replacement	n/a (0 patients)	n/a	n/a
Varicose veins stripping and ligation	n/a (0 patients)	n/a	163

Moree District Hospital: Elective surgery waiting list

January to March 2017

Patients ready for surgery on waiting list at start of quarter: 115 patients

Patients ready for surgery on waiting list at end of quarter: 116 patients

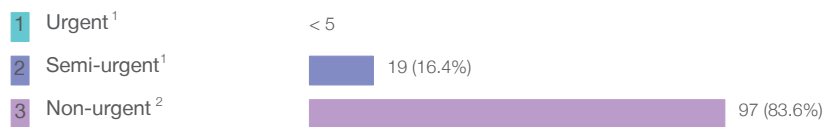
Patients not ready for surgery⁸ on waiting list at end of quarter: 12 patients

	Same period last year	Change since one year ago
Patients ready for surgery on waiting list at start of quarter	125	-8.0%
Patients ready for surgery on waiting list at end of quarter	108	7.4%
Patients not ready for surgery ⁸ on waiting list at end of quarter	16	-25.0%

Moree District Hospital: Patients ready for elective surgery

as at 31st March 2017

Patients ready for surgery on waiting list by urgency category: 116 patients



	Same period last year	Change since one year ago
Urgent ¹	< 5	*
Semi-urgent ¹	11	50.0%
Non-urgent ²	97	0.0%

Moree District Hospital: Patients ready for elective surgery as at 31st March 2017

Patients ready for elective surgery by specialty of surgeon: 116 patients

	As at 31 Mar 2017	Same time last year	Change since one year ago
All specialties	116	108	7.4%
Cardiothoracic surgery	0	0	n/a
Ear, nose and throat surgery	7	6	16.7%
General surgery	14	9	55.6%
Gynaecology	0	0	n/a
Medical	0	0	n/a
Neurosurgery	0	0	n/a
Ophthalmology	92	93	-1.1%
Orthopaedic surgery	< 5	0	n/a
Plastic surgery	0	0	n/a
Urology	0	0	n/a
Vascular surgery	0	0	n/a

Patients ready for elective surgery for common procedures⁷

	As at 31 Mar 2017	Same time last year	Change since one year ago
Abdominal hysterectomy	0	< 5	n/a
Cataract extraction	85	87	-2.3%
Cholecystectomy	< 5	< 5	*
Coronary artery bypass graft	0	< 5	n/a
Cystoscopy	0	< 5	n/a
Haemorrhoidectomy	< 5	< 5	n/a
Hysteroscopy	0	< 5	n/a
Inguinal herniorrhaphy	0	< 5	*
Myringoplasty / Tympanoplasty	0	< 5	n/a
Myringotomy	0	< 5	*
Other - General	0	< 5	n/a
Prostatectomy	0	< 5	n/a
Septoplasty	0	< 5	n/a
Tonsillectomy	6	< 5	*
Total hip replacement	0	< 5	n/a
Total knee replacement	0	< 5	n/a
Varicose veins stripping and ligation	0	< 5	n/a

Moree District Hospital: Patients ready for elective surgery
as at 31st March 2017

Patients ready for elective surgery, on the waiting list for longer than 12 months

	As at 31 Mar 2017	Same time last year
All specialties	0	0

* Suppressed due to small numbers and to protect privacy. Relevant graphs are also suppressed.

< 5 Less than five patients. For measures by urgency category, counts are included in an adjacent category. Relevant graphs are also suppressed.

1. Excluding staged procedures.
2. Excluding staged procedures and cystoscopy.
3. Including non-urgent cystoscopy.
4. Excludes the total number of days the patient was coded as 'not ready for surgery'.
5. This is the number of days it took for half of patients who received elective surgery during the period to be admitted and receive their surgery. The other half took equal to or longer than the median to be admitted for surgery.
6. This is the number of days it took for 90% of patients who received elective surgery during the period to be admitted and receive their surgery. The final 10% of patients took equal to or longer than the 90th percentile.
7. The procedures included in this list are procedures which are high volume; some may be associated with long waiting periods. For a description of these procedures see *Elective Surgery Glossary of Common Procedures, December 2012*.
8. Includes staged procedures, non-urgent cystoscopy, and patients currently not available for personal reasons.

For more information: For details of methods, see the *Technical Supplement: Elective surgery measures, July to September 2016*.

Note: All percentages rounded to whole numbers and therefore percentages may not add to 100%.

Source: Waiting List Collection On-Line System, NSW Health (extracted 18 April 2017.).