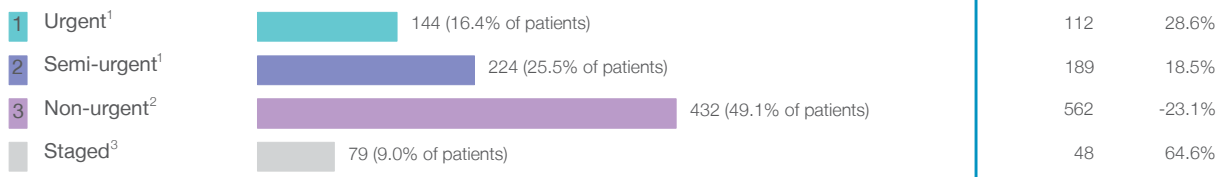


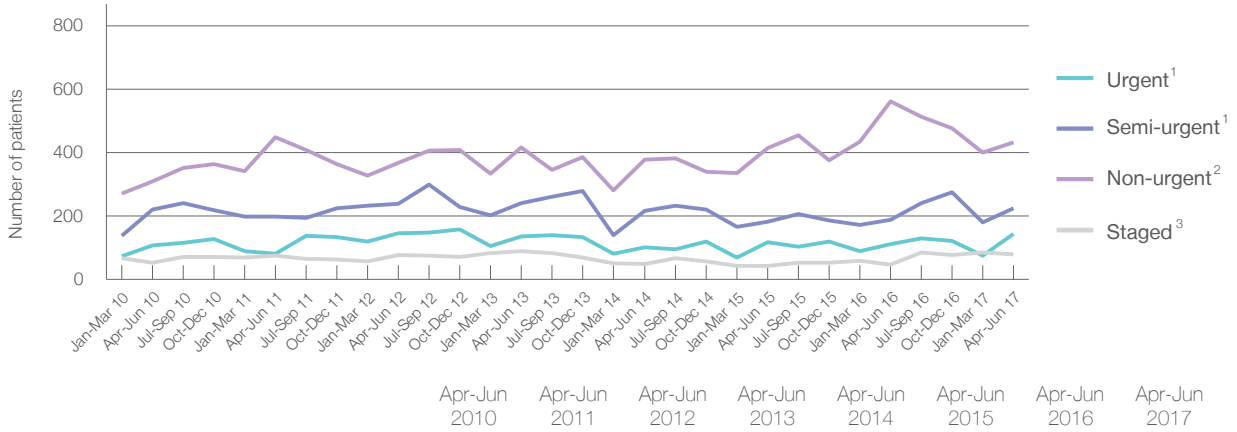
Dubbo Base Hospital: Elective surgery performed

April to June 2017

Patients who received elective surgery by urgency category: 879 patients



Patients who received elective surgery by urgency category by quarter, April 2012 to June 2017



Urgency Category	Apr-Jun 2010	Apr-Jun 2011	Apr-Jun 2012	Apr-Jun 2013	Apr-Jun 2014	Apr-Jun 2015	Apr-Jun 2016	Apr-Jun 2017
All categories	692	804	830	883	745	758	911	879
Urgent ¹	107	81	146	136	102	117	112	144
Semi-urgent ¹	221	199	239	241	216	183	189	224
Non-urgent ²	310	449	368	417	378	414	562	432
Staged ³	54	75	77	89	49	44	48	79

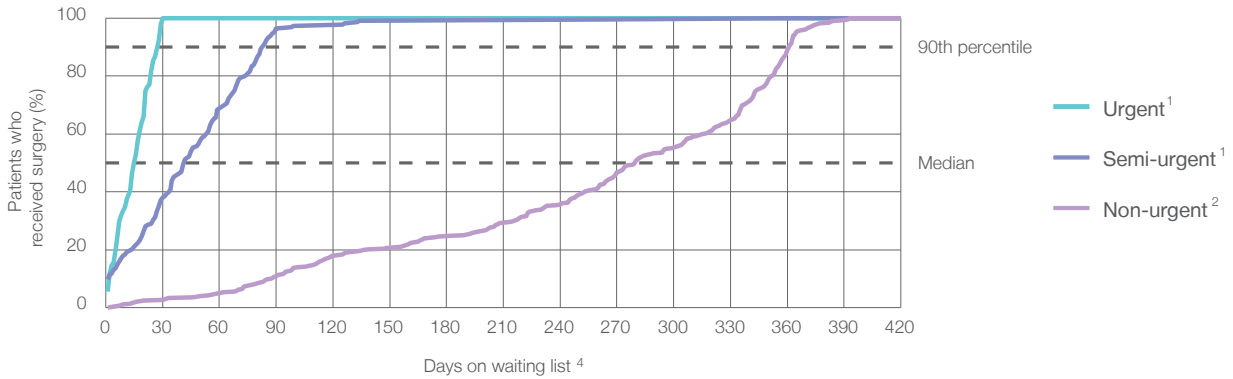
Dubbo Base Hospital: Time waited to receive elective surgery

April to June 2017

Percentage of patients who received surgery within the clinically recommended timeframe

	Recommended: (days)	Percentage	Same period last year	Peer group (this period)
1 Urgent ¹	30 days	100%	100%	99.9%
2 Semi-urgent ¹	90 days	96.4%	99.5%	97.8%
3 Non-urgent ²	365 days	95.4%	98.6%	95.9%

Percentage of patients who received elective surgery by waiting time (days)



Waiting time (days) for people who received surgery by urgency category

	Waiting time (days)	Peer group (this period)	This hospital (same period last year)	Peer group (same period last year)
1 Urgent: ¹ 144 patients				
Median time to receive surgery	16 days	14	12	13
90th percentile time to receive surgery	28 days	27	27	27
2 Semi-urgent: ¹ 224 patients				
Median time to receive surgery	42 days	49	51	50
90th percentile time to receive surgery	83 days	84	80	83
3 Non-urgent: ² 432 patients				
Median time to receive surgery	280 days	267	324	276
90th percentile time to receive surgery	361 days	358	357	358

Dubbo Base Hospital: Time waited to receive elective surgery

April to June 2017

Median ⁵ waiting time (days) for patients who received elective surgery by specialty of surgeon		Same period last year	Peer group (this period)
Cardiothoracic surgery	n/a (0 patients)	n/a	*
Ear, nose and throat surgery	234 days (91 patients)	187	247
General surgery	41 days (221 patients)	78	53
Gynaecology	70 days (139 patients)	57	48
Medical	* (< 5 patients)	*	23
Neurosurgery	n/a (0 patients)	n/a	n/a
Ophthalmology	274 days (119 patients)	343	258
Orthopaedic surgery	295 days (160 patients)	333	215
Plastic surgery	n/a (0 patients)	n/a	83
Urology	25 days (141 patients)	28	40
Vascular surgery	* (6 patients)	n/a	21

Median ⁵ waiting time (days) for patients who received elective surgery by common procedures ⁷		Same period last year	Peer group (this period)
Abdominal hysterectomy	107 days (19 patients)	*	81
Cataract extraction	269 days (109 patients)	344	276
Cholecystectomy	75 days (34 patients)	65	59
Coronary artery bypass graft	n/a (0 patients)	n/a	n/a
Cystoscopy	23 days (46 patients)	28	30
Haemorrhoidectomy	30 days (16 patients)	*	64
Hysteroscopy	45 days (25 patients)	31	35
Inguinal herniorrhaphy	133 days (18 patients)	190	118
Myringoplasty / Tympanoplasty	* (7 patients)	*	307
Myringotomy	* (< 5 patients)	*	24
Other - General	19 days (14 patients)	37	29
Prostatectomy	59 days (19 patients)	*	70
Septoplasty	* (6 patients)	287	316
Tonsillectomy	294 days (34 patients)	205	272
Total hip replacement	344 days (14 patients)	327	266
Total knee replacement	337 days (37 patients)	335	301
Varicose veins stripping and ligation	* (< 5 patients)	*	131

Dubbo Base Hospital: Elective surgery waiting list

April to June 2017

	Same period last year	Change since one year ago
Patients ready for surgery on waiting list at start of quarter: 1,395 patients	1,655	-15.7%
Patients ready for surgery on waiting list at end of quarter: 1,391 patients	1,626	-14.5%
Patients not ready for surgery ⁸ on waiting list at end of quarter: 296 patients	249	18.9%

Dubbo Base Hospital: Patients ready for elective surgery

as at 30th June 2017

Patients ready for surgery on waiting list by urgency category: 1,391 patients

	Same period last year	Change since one year ago
1 Urgent ¹ 15 (1.1%)	23	-34.8%
2 Semi-urgent ¹ 114 (8.2%)	157	-27.4%
3 Non-urgent ² 1,262 (90.7%)	1,446	-12.7%

Dubbo Base Hospital: Patients ready for elective surgery

as at 30th June 2017

Patients ready for elective surgery by specialty of surgeon: 1,391 patients

	As at 30 Jun 2017	Same time last year	Change since one year ago
All specialties	1,391	1,626	-14.5%
Cardiothoracic surgery	0	0	n/a
Ear, nose and throat surgery	290	272	6.6%
General surgery	255	343	-25.7%
Gynaecology	135	140	-3.6%
Medical	< 5	< 5	*
Neurosurgery	0	0	n/a
Ophthalmology	293	354	-17.2%
Orthopaedic surgery	360	444	-18.9%
Plastic surgery	0	0	n/a
Urology	57	69	-17.4%
Vascular surgery	0	0	n/a

Patients ready for elective surgery for common procedures ⁷

	As at 30 Jun 2017	Same time last year	Change since one year ago
Abdominal hysterectomy	10	14	-28.6%
Cataract extraction	284	340	-16.5%
Cholecystectomy	37	63	-41.3%
Coronary artery bypass graft	0	< 5	n/a
Cystoscopy	8	15	-46.7%
Haemorrhoidectomy	< 5	10	*
Hysteroscopy	28	42	-33.3%
Inguinal herniorrhaphy	49	57	-14.0%
Myringoplasty / Tympanoplasty	11	17	-35.3%
Myringotomy	< 5	< 5	n/a
Other - General	8	22	-63.6%
Prostatectomy	13	13	0.0%
Septoplasty	44	41	7.3%
Tonsillectomy	141	119	18.5%
Total hip replacement	55	56	-1.8%
Total knee replacement	100	120	-16.7%
Varicose veins stripping and ligation	5	9	-44.4%

Dubbo Base Hospital: Patients ready for elective surgery as at 30th June 2017

Patients ready for elective surgery, on the waiting list for longer than 12 months

As at 30 Jun 2017 Same time last year

	As at 30 Jun 2017	Same time last year
All specialties	< 5	0

* Suppressed due to small numbers and to protect privacy. Relevant graphs are also suppressed.

< 5 Less than five patients. For measures by urgency category, counts are included in an adjacent category. Relevant graphs are also suppressed.

1. Excluding staged procedures.
2. Excluding staged procedures and cystoscopy.
3. Including non-urgent cystoscopy.
4. Excludes the total number of days the patient was coded as 'not ready for surgery'.
5. This is the number of days it took for half of patients who received elective surgery during the period to be admitted and receive their surgery. The other half took equal to or longer than the median to be admitted for surgery.
6. This is the number of days it took for 90% of patients who received elective surgery during the period to be admitted and receive their surgery. The final 10% of patients took equal to or longer than the 90th percentile.
7. The procedures included in this list are procedures which are high volume; some may be associated with long waiting periods. For a description of these procedures see *Elective Surgery Glossary of Common Procedures, December 2012*.
8. Includes staged procedures, non-urgent cystoscopy, and patients currently not available for personal reasons.

For more information: For details of methods, see the *Technical Supplement: Elective surgery measures, July to September 2016*.

Note: All percentages rounded to whole numbers and therefore percentages may not add to 100%.

Source: Waiting List Collection On-Line System, NSW Health (extracted 18 July 2017.).