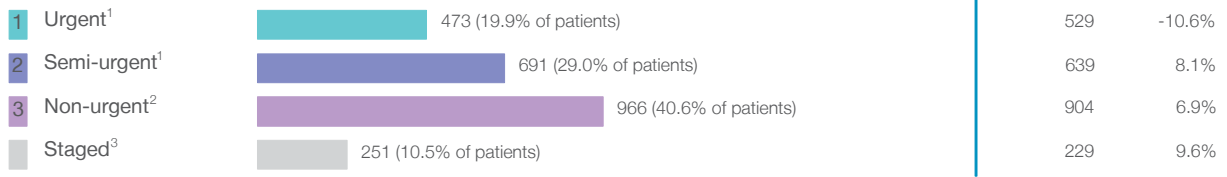
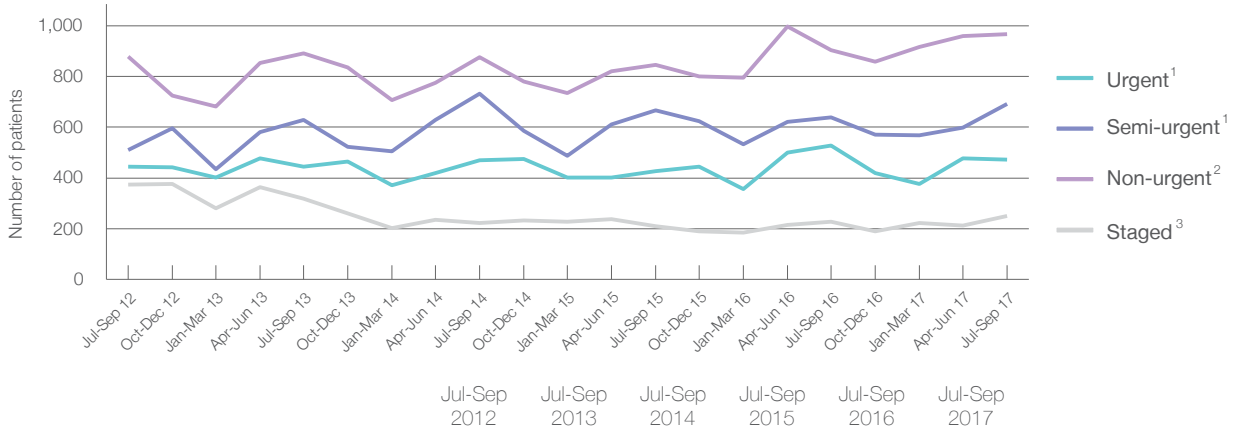


Concord Hospital: Elective surgery performed July to September 2017

Patients who received elective surgery by urgency category: 2,381 patients



Patients who received elective surgery by urgency category by quarter, July 2012 to September 2017



Urgency Category	Jul-Sep 2012	Jul-Sep 2013	Jul-Sep 2014	Jul-Sep 2015	Jul-Sep 2016	Jul-Sep 2017
All categories	2,207	2,284	2,298	2,148	2,301	2,381
Urgent ¹	445	444	470	427	529	473
Semi-urgent ¹	511	629	731	666	639	691
Non-urgent ²	878	892	875	845	904	966
Staged ³	373	319	222	210	229	251

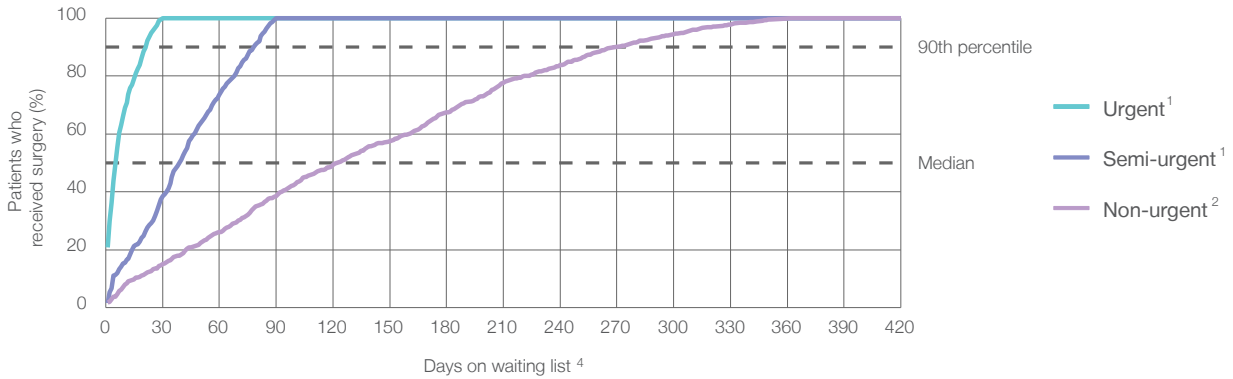
Concord Hospital: Time waited to receive elective surgery

July to September 2017

Percentage of patients who received surgery within the clinically recommended timeframe

	Recommended: (days)	100%	Same period last year	Peer group (this period)
1 Urgent ¹	30 days	100%	100%	100%
2 Semi-urgent ¹	90 days	100%	100%	96.8%
3 Non-urgent ²	365 days	100%	100%	94.3%

Percentage of patients who received elective surgery by waiting time (days)



Waiting time (days) for people who received surgery by urgency category

	Peer group (this period)	This hospital (same period last year)	Peer group (same period last year)
1 Urgent: ¹ 473 patients			
Median time to receive surgery	6 days	9	8
90th percentile time to receive surgery	22 days	25	24
2 Semi-urgent: ¹ 691 patients			
Median time to receive surgery	40 days	41	42
90th percentile time to receive surgery	78 days	83	78
3 Non-urgent: ² 966 patients			
Median time to receive surgery	123 days	172	168
90th percentile time to receive surgery	272 days	357	321

Concord Hospital: Time waited to receive elective surgery

July to September 2017

Median⁵ waiting time (days) for patients who received elective surgery by specialty of surgeon

Specialty	Median ⁵ waiting time (days) (patients)	Same period last year	Peer group (this period)
Cardiothoracic surgery	28 days (51 patients)	35	20
Ear, nose and throat surgery	111 days (104 patients)	245	140
General surgery	28 days (528 patients)	23	28
Gynaecology	71 days (35 patients)	148	30
Medical	5 days (42 patients)	6	21
Neurosurgery	72 days (67 patients)	53	44
Ophthalmology	150 days (345 patients)	253	95
Orthopaedic surgery	139 days (285 patients)	165	75
Plastic surgery	13 days (289 patients)	12	20
Urology	39 days (518 patients)	37	33
Vascular surgery	13 days (117 patients)	15	18

Median⁵ waiting time (days) for patients who received elective surgery by common procedures⁷

Procedure	Median ⁵ waiting time (days) (patients)	Same period last year	Peer group (this period)
Abdominal hysterectomy	* (< 5 patients)	*	57
Cataract extraction	172 days (270 patients)	286	131
Cholecystectomy	38 days (41 patients)	46	40
Coronary artery bypass graft	n/a (0 patients)	*	27
Cystoscopy	35 days (166 patients)	37	29
Haemorrhoidectomy	39 days (15 patients)	18	60
Hysteroscopy	57 days (14 patients)	85	29
Inguinal herniorrhaphy	55 days (34 patients)	53	70
Myringoplasty / Tympanoplasty	* (< 5 patients)	*	331
Myringotomy	n/a (0 patients)	n/a	67
Other - General	16 days (104 patients)	18	18
Prostatectomy	66 days (24 patients)	51	69
Septoplasty	86 days (18 patients)	300	335
Tonsillectomy	* (9 patients)	*	326
Total hip replacement	146 days (29 patients)	113	137
Total knee replacement	183 days (65 patients)	213	232
Varicose veins stripping and ligation	65 days (29 patients)	82	81

Concord Hospital: Elective surgery waiting list

July to September 2017

Patients ready for surgery on waiting list at start of quarter: 1,888 patients

Patients ready for surgery on waiting list at end of quarter: 1,744 patients

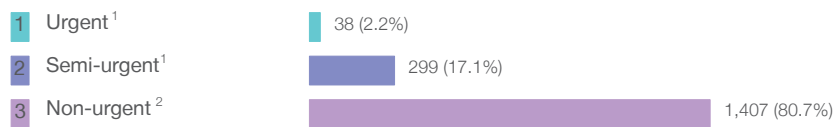
Patients not ready for surgery⁸ on waiting list at end of quarter: 768 patients

Same period last year	Change since one year ago
2,082	-9.3%
2,025	-13.9%
743	3.4%

Concord Hospital: Patients ready for elective surgery

as at 30th September 2017

Patients ready for surgery on waiting list by urgency category: 1,744 patients



Same period last year	Change since one year ago
45	-15.6%
351	-14.8%
1,629	-13.6%

Concord Hospital: Patients ready for elective surgery as at 30th September 2017

Patients ready for elective surgery by specialty of surgeon: 1,744 patients

	As at 30 Sep 2017	Same time last year	Change since one year ago
All specialties	1,744	2,025	-13.9%
Cardiothoracic surgery	7	7	0.0%
Ear, nose and throat surgery	161	222	-27.5%
General surgery	240	197	21.8%
Gynaecology	27	32	-15.6%
Medical	< 5	6	*
Neurosurgery	112	67	67.2%
Ophthalmology	378	603	-37.3%
Orthopaedic surgery	428	499	-14.2%
Plastic surgery	179	146	22.6%
Urology	184	196	-6.1%
Vascular surgery	26	50	-48.0%

Patients ready for elective surgery for common procedures ⁷

	As at 30 Sep 2017	Same time last year	Change since one year ago
Abdominal hysterectomy	6	< 5	*
Cataract extraction	327	506	-35.4%
Cholecystectomy	17	28	-39.3%
Coronary artery bypass graft	0	< 5	n/a
Cystoscopy	59	63	-6.3%
Haemorrhoidectomy	15	6	150.0%
Hysteroscopy	10	15	-33.3%
Inguinal herniorrhaphy	32	35	-8.6%
Myringoplasty / Tympanoplasty	8	10	-20.0%
Myringotomy	0	< 5	n/a
Other - General	35	16	118.8%
Prostatectomy	12	28	-57.1%
Septoplasty	23	36	-36.1%
Tonsillectomy	11	13	-15.4%
Total hip replacement	49	43	14.0%
Total knee replacement	117	156	-25.0%
Varicose veins stripping and ligation	7	23	-69.6%

Concord Hospital: Patients ready for elective surgery
as at 30th September 2017

Patients ready for elective surgery, on the waiting list for longer than 12 months

As at 30 Sep 2017 Same time last year

	As at 30 Sep 2017	Same time last year
All specialties	0	0

* Suppressed due to small numbers and to protect privacy. Relevant graphs are also suppressed.

< 5 Less than five patients. For measures by urgency category, counts are included in an adjacent category. Relevant graphs are also suppressed.

1. Excluding staged procedures.
2. Excluding staged procedures and cystoscopy.
3. Including non-urgent cystoscopy.
4. Excludes the total number of days the patient was coded as 'not ready for surgery'.
5. This is the number of days it took for half of patients who received elective surgery during the period to be admitted and receive their surgery. The other half took equal to or longer than the median to be admitted for surgery.
6. This is the number of days it took for 90% of patients who received elective surgery during the period to be admitted and receive their surgery. The final 10% of patients took equal to or longer than the 90th percentile.
7. The procedures included in this list are procedures which are high volume; some may be associated with long waiting periods. For a description of these procedures see *Elective Surgery Glossary of Common Procedures, December 2012*.
8. Includes staged procedures, non-urgent cystoscopy, and patients currently not available for personal reasons.

For more information: For details of methods, see the *Technical Supplement: Elective surgery measures, July to September 2016*.

Note: All percentages rounded to whole numbers and therefore percentages may not add to 100%.

Source: Waiting List Collection On-Line System, NSW Health (extracted 16 Oct 2017.).