

## Bateman's Bay District Hospital: Emergency department (ED) overview

July to September 2017

All presentations:<sup>1</sup> 4,039 patients  
Emergency presentations:<sup>2</sup> 3,854 patients

| Same period last year | Change since one year ago |
|-----------------------|---------------------------|
| 3,567                 | 13.2%                     |
| 3,487                 | 10.5%                     |

## Bateman's Bay District Hospital: Time patients waited to start treatment<sup>3</sup>

July to September 2017

**Triage 2** Emergency (e.g. chest pain, severe burns): 347 patients

Median time to start treatment<sup>4</sup> 9 minutes  
90th percentile time to start treatment<sup>5</sup> 32 minutes

**Triage 3** Urgent (e.g. moderate blood loss, dehydration): 1,166 patients

Median time to start treatment<sup>4</sup> 24 minutes  
90th percentile time to start treatment<sup>5</sup> 87 minutes

**Triage 4** Semi-urgent (e.g. sprained ankle, earache): 1,933 patients

Median time to start treatment<sup>4</sup> 24 minutes  
90th percentile time to start treatment<sup>5</sup> 93 minutes

**Triage 5** Non-urgent (e.g. small cuts or abrasions): 397 patients

Median time to start treatment<sup>4</sup> 26 minutes  
90th percentile time to start treatment<sup>5</sup> 93 minutes

| Same period last year | NSW (this period) |
|-----------------------|-------------------|
| 281                   |                   |
| 8 minutes             | 9 minutes         |
| 26 minutes            | 29 minutes        |
| 995                   |                   |
| 18 minutes            | 23 minutes        |
| 57 minutes            | 83 minutes        |
| 1,685                 |                   |
| 24 minutes            | 30 minutes        |
| 77 minutes            | 121 minutes       |
| 510                   |                   |
| 21 minutes            | 26 minutes        |
| 78 minutes            | 118 minutes       |

## Bateman's Bay District Hospital: Time from presentation until leaving the ED

July to September 2017

Attendances used to calculate time to leaving the ED:<sup>6</sup> 4,037 patients

Percentage of patients who spent four hours or less in the ED 85.1%

| Same period last year | Change since one year ago |
|-----------------------|---------------------------|
| 3,567                 | 13.2%                     |
| 84.7%                 |                           |

\* Suppressed due to small number of patients and to protect privacy. Relevant graphs are also suppressed.

- All emergency and non-emergency attendances at the emergency department (ED).
- All attendances that have a triage category and are coded as emergency presentations or unplanned return visits.
- Some patients are excluded from ED time measures due to calculation requirements. For details, see the *Technical Supplement: Emergency department measures, July to September 2016*.
- The median is the time by which half of patients started treatment. The other half of patients waited equal to or longer than this time.
- The 90th percentile is the time by which 90% of patients started treatment. The final 10% of patients waited equal to or longer than this time.
- All presentations that have a departure time.

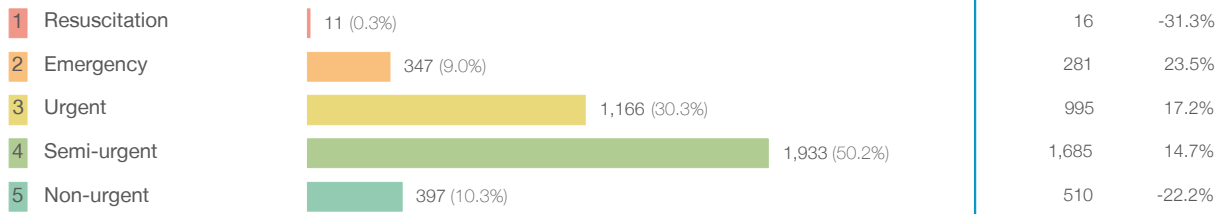
**Note:** Presentation time is the earlier time recorded for clerical registration or the triage process. Treatment time is the earliest time recorded when a healthcare professional provides medical care relevant to the patient's presenting problems.

**Source:** Health Information Exchange, NSW Health (extracted 17 October 2017).

## Bateman's Bay District Hospital: Patients presenting to the emergency department July to September 2017

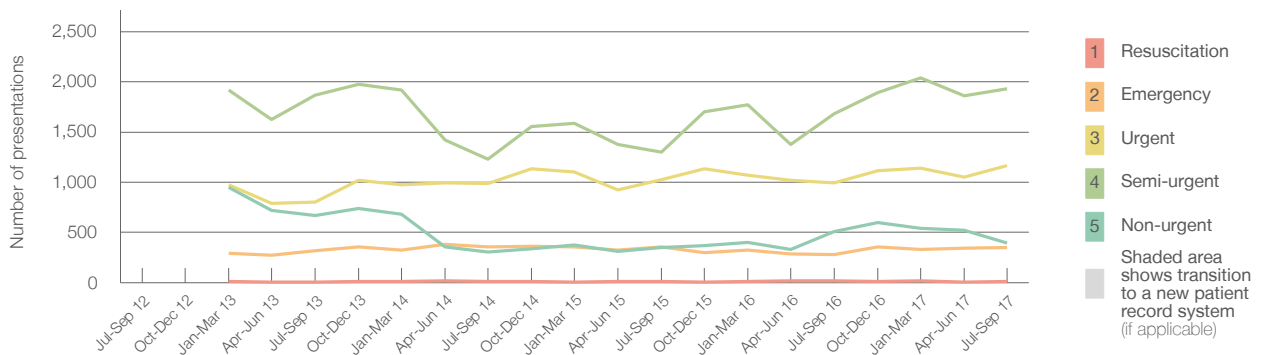
All presentations:<sup>1</sup> 4,039 patients

Emergency presentations<sup>2</sup> by triage category: 3,854 patients



| Same period last year | Change since one year ago |
|-----------------------|---------------------------|
| 3,567                 | 13.2%                     |
| 3,487                 | 10.5%                     |
| 16                    | -31.3%                    |
| 281                   | 23.5%                     |
| 995                   | 17.2%                     |
| 1,685                 | 14.7%                     |
| 510                   | -22.2%                    |

Emergency presentations<sup>2</sup> by quarter, July 2012 to September 2017 <sup>† §</sup>



|                             | Jul-Sep 2012 | Jul-Sep 2013 | Jul-Sep 2014 | Jul-Sep 2015 | Jul-Sep 2016 | Jul-Sep 2017 |
|-----------------------------|--------------|--------------|--------------|--------------|--------------|--------------|
| Resuscitation               |              | 5            | 13           | 13           | 16           | 11           |
| Emergency                   |              | 319          | 355          | 358          | 281          | 347          |
| Urgent                      |              | 800          | 985          | 1,025        | 995          | 1,166        |
| Semi-urgent                 |              | 1,867        | 1,231        | 1,299        | 1,685        | 1,933        |
| Non-urgent                  |              | 671          | 304          | 347          | 510          | 397          |
| All emergency presentations |              | 3,662        | 2,888        | 3,042        | 3,487        | 3,854        |

## Bateman's Bay District Hospital: Patients arriving by ambulance July to September 2017

Arrivals used to calculate transfer of care time:<sup>7</sup> 509 patients

ED Transfer of care time



| Same period last year | Change since one year ago |
|-----------------------|---------------------------|
| 470                   |                           |
| 9 minutes             | 0 minutes                 |
| 25 minutes            | -3 minutes                |

- (†) Data points are not shown in graphs for quarters when patient numbers are too small.
- (‡) Caution is advised when interpreting abrupt changes over time at the hospital level. For example, performance before and after transition to a new information system is not directly comparable. For more information, see Background Paper: Approaches to reporting time measures of emergency department performance, December 2011.
- (§) Quarterly information for this hospital is shown where data are available from the Health Information Exchange, NSW Health. For more information, see Background Paper: Approaches to reporting time measures of emergency department performance, December 2011.

## Bateman's Bay District Hospital: Time patients waited to start treatment, triage 2

July to September 2017

**Triage 2** Emergency (e.g. chest pain, severe burns)

Number of triage 2 patients: 347

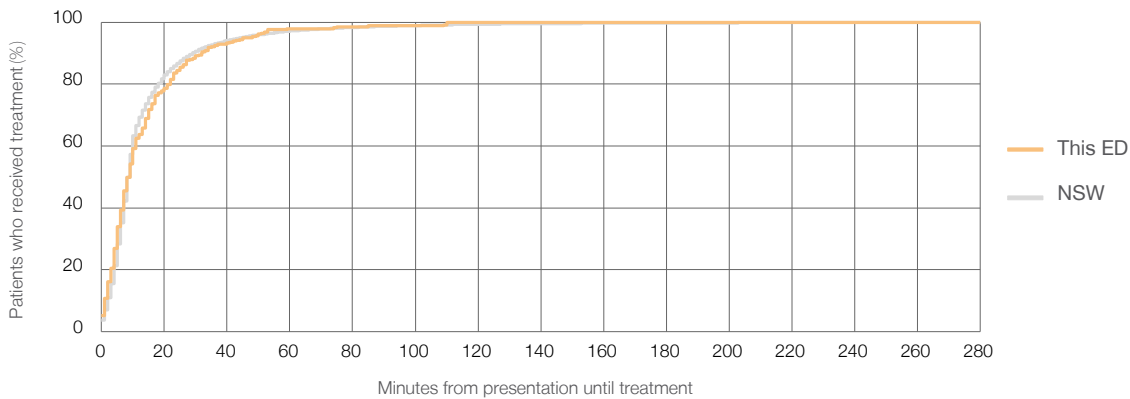
Number of triage 2 patients used to calculate waiting time:<sup>3</sup> 341

Median time to start treatment<sup>4</sup>  9 minutes

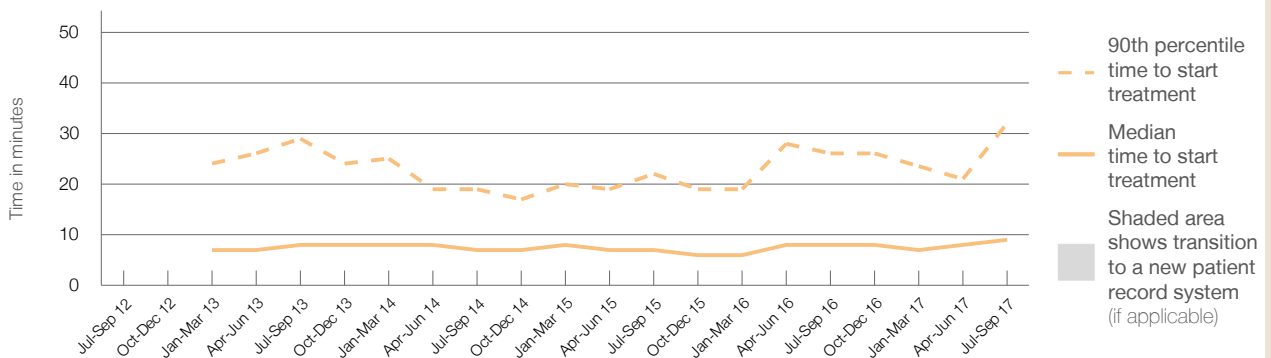
90th percentile time to start treatment<sup>5</sup>  32 minutes

| Same period last year | NSW (this period) |
|-----------------------|-------------------|
| 281                   |                   |
| 278                   |                   |
| 8 minutes             | 9 minutes         |
| 26 minutes            | 29 minutes        |

### Percentage of triage 2 patients who received treatment by time, July to September 2017



### Time patients waited to start treatment (minutes) for triage 2 patients, July 2012 to September 2017<sup>†‡§</sup>



|  | Jul-Sep 2012 | Jul-Sep 2013 | Jul-Sep 2014 | Jul-Sep 2015 | Jul-Sep 2016 | Jul-Sep 2017 |
|--|--------------|--------------|--------------|--------------|--------------|--------------|
| Median time to start treatment <sup>4</sup> (minutes)          |              | 8            | 7            | 7            | 8            | 9            |
| 90th percentile time to start treatment <sup>5</sup> (minutes) |              | 29           | 19           | 22           | 26           | 32           |

(†) Data points are not shown in graphs for quarters when patient numbers are too small.

(‡) Caution is advised when interpreting abrupt changes over time at the hospital level. For example, performance before and after transition to a new information system is not directly comparable. For more information, see Background Paper: Approaches to reporting time measures of emergency department performance, December 2011.

(§) Quarterly information for this hospital is shown where data are available from the Health Information Exchange, NSW Health. For more information, see Background Paper: Approaches to reporting time measures of emergency department performance, December 2011.

## Bateman's Bay District Hospital: Time patients waited to start treatment, triage 3 July to September 2017

**Triage 3** Urgent (e.g. moderate blood loss, dehydration)

Number of triage 3 patients: 1,166

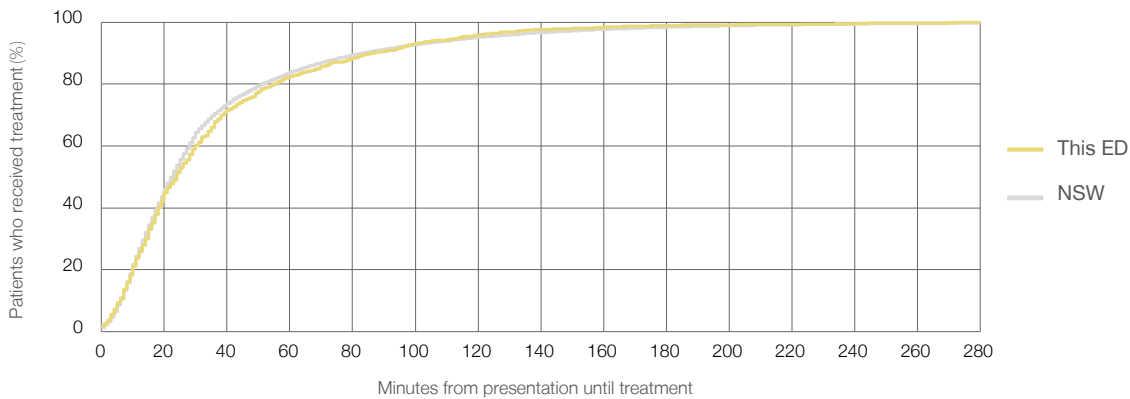
Number of triage 3 patients used to calculate waiting time:<sup>3</sup> 1,101

Median time to start treatment<sup>4</sup> 24 minutes

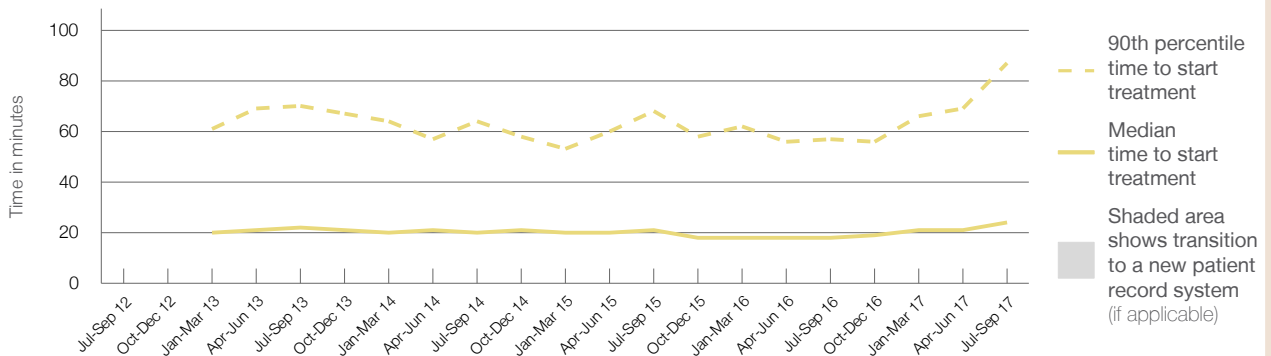
90th percentile time to start treatment<sup>5</sup> 87 minutes

| Same period last year | NSW (this period) |
|-----------------------|-------------------|
| 995                   | 939               |
| 18 minutes            | 23 minutes        |
| 57 minutes            | 83 minutes        |

### Percentage of triage 3 patients who received treatment by time, July to September 2017



### Time patients waited to start treatment (minutes) for triage 3 patients, July 2012 to September 2017<sup>†‡§</sup>



|  | Jul-Sep 2012 | Jul-Sep 2013 | Jul-Sep 2014 | Jul-Sep 2015 | Jul-Sep 2016 | Jul-Sep 2017 |
|--|--------------|--------------|--------------|--------------|--------------|--------------|
| Median time to start treatment <sup>4</sup> (minutes)          |              | 22           | 20           | 21           | 18           | 24           |
| 90th percentile time to start treatment <sup>5</sup> (minutes) |              | 70           | 64           | 68           | 57           | 87           |

(†) Data points are not shown in graphs for quarters when patient numbers are too small.

(‡) Caution is advised when interpreting abrupt changes over time at the hospital level. For example, performance before and after transition to a new information system is not directly comparable. For more information, see Background Paper: Approaches to reporting time measures of emergency department performance, December 2011.

(§) Quarterly information for this hospital is shown where data are available from the Health Information Exchange, NSW Health. For more information, see Background Paper: Approaches to reporting time measures of emergency department performance, December 2011.

## Bateman's Bay District Hospital: Time patients waited to start treatment, triage 4 July to September 2017

**Triage 4** Semi-urgent (e.g. sprained ankle, earache)

Number of triage 4 patients: 1,933

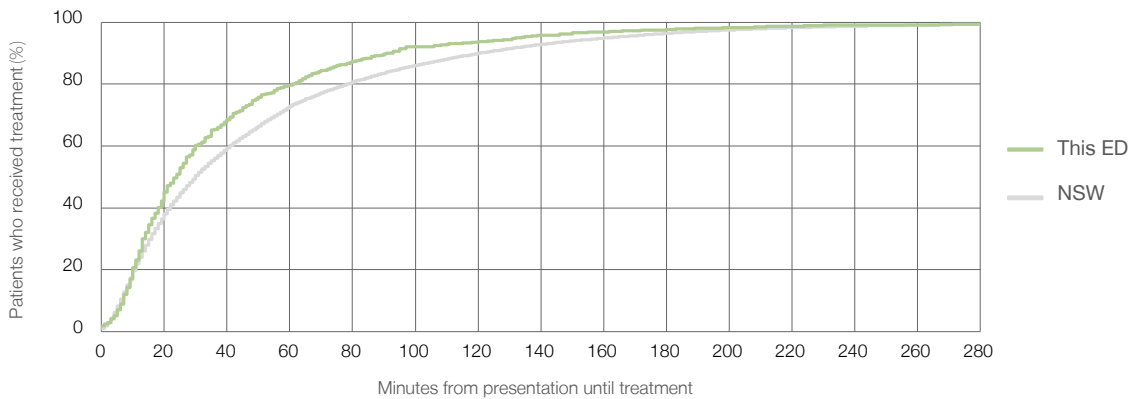
Number of triage 4 patients used to calculate waiting time:<sup>3</sup> 728

Median time to start treatment<sup>4</sup> 24 minutes

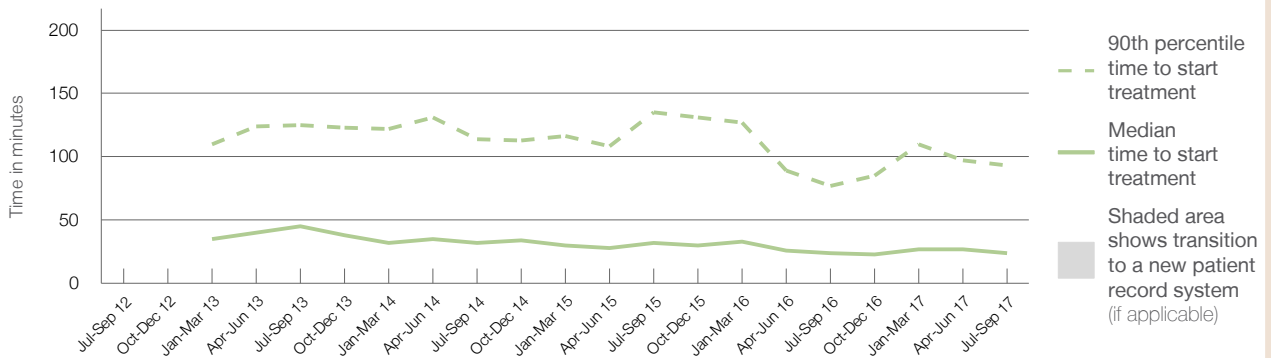
90th percentile time to start treatment<sup>5</sup> 93 minutes

| Same period last year | NSW (this period) |
|-----------------------|-------------------|
| 1,685                 | 790               |
| 24 minutes            | 30 minutes        |
| 77 minutes            | 121 minutes       |

### Percentage of triage 4 patients who received treatment by time, July to September 2017



### Time patients waited to start treatment (minutes) for triage 4 patients, July 2012 to September 2017<sup>†‡§</sup>



|  | Jul-Sep 2012 | Jul-Sep 2013 | Jul-Sep 2014 | Jul-Sep 2015 | Jul-Sep 2016 | Jul-Sep 2017 |
|--|--------------|--------------|--------------|--------------|--------------|--------------|
| Median time to start treatment <sup>4</sup> (minutes)          |              | 45           | 32           | 32           | 24           | 24           |
| 90th percentile time to start treatment <sup>5</sup> (minutes) |              | 125          | 114          | 135          | 77           | 93           |

(†) Data points are not shown in graphs for quarters when patient numbers are too small.

(‡) Caution is advised when interpreting abrupt changes over time at the hospital level. For example, performance before and after transition to a new information system is not directly comparable. For more information, see Background Paper: Approaches to reporting time measures of emergency department performance, December 2011.

(§) Quarterly information for this hospital is shown where data are available from the Health Information Exchange, NSW Health. For more information, see Background Paper: Approaches to reporting time measures of emergency department performance, December 2011.

## Bateman's Bay District Hospital: Time patients waited to start treatment, triage 5

July to September 2017

**Triage 5** Non-urgent (e.g. small cuts or abrasions)

Number of triage 5 patients: 397

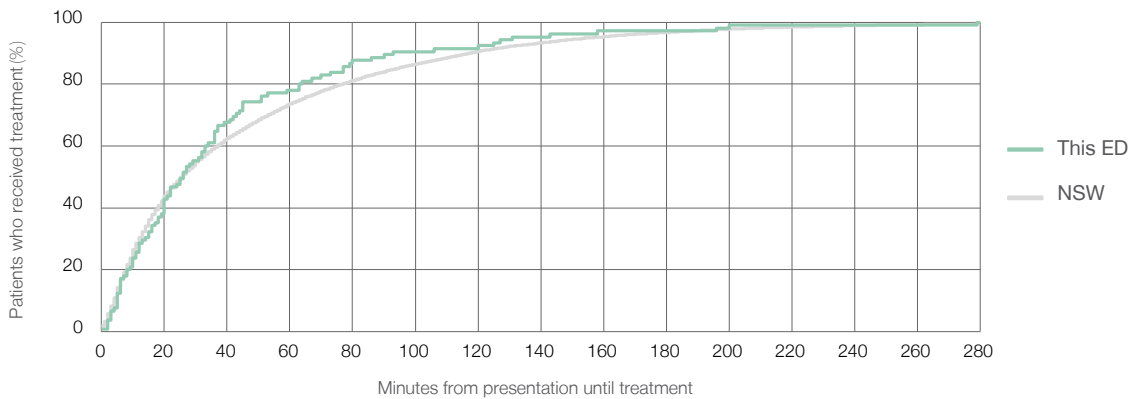
Number of triage 5 patients used to calculate waiting time:<sup>3</sup> 105

Median time to start treatment<sup>4</sup> 26 minutes

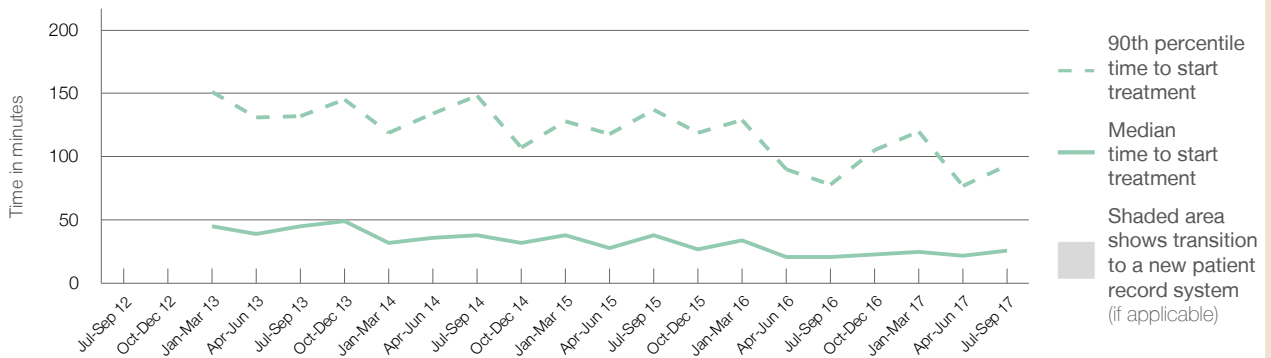
90th percentile time to start treatment<sup>5</sup> 93 minutes

|  | Same period last year | NSW (this period) |
|--|-----------------------|-------------------|
|  | 510                   |                   |
|  | 147                   |                   |
|  | 21 minutes            | 26 minutes        |
|  | 78 minutes            | 118 minutes       |

### Percentage of triage 5 patients who received treatment by time, July to September 2017



### Time patients waited to start treatment (minutes) for triage 5 patients, July 2012 to September 2017<sup>†‡§</sup>



|  | Jul-Sep 2012 | Jul-Sep 2013 | Jul-Sep 2014 | Jul-Sep 2015 | Jul-Sep 2016 | Jul-Sep 2017 |
|--|--------------|--------------|--------------|--------------|--------------|--------------|
| Median time to start treatment <sup>4</sup> (minutes)          |              | 45           | 38           | 38           | 21           | 26           |
| 90th percentile time to start treatment <sup>5</sup> (minutes) |              | 132          | 148          | 137          | 78           | 93           |

(†) Data points are not shown in graphs for quarters when patient numbers are too small.

(‡) Caution is advised when interpreting abrupt changes over time at the hospital level. For example, performance before and after transition to a new information system is not directly comparable. For more information, see Background Paper: Approaches to reporting time measures of emergency department performance, December 2011.

(§) Quarterly information for this hospital is shown where data are available from the Health Information Exchange, NSW Health. For more information, see Background Paper: Approaches to reporting time measures of emergency department performance, December 2011.

## Bateman's Bay District Hospital: Time patients spent in the ED

July to September 2017

All presentations:<sup>1</sup> 4,039 patients

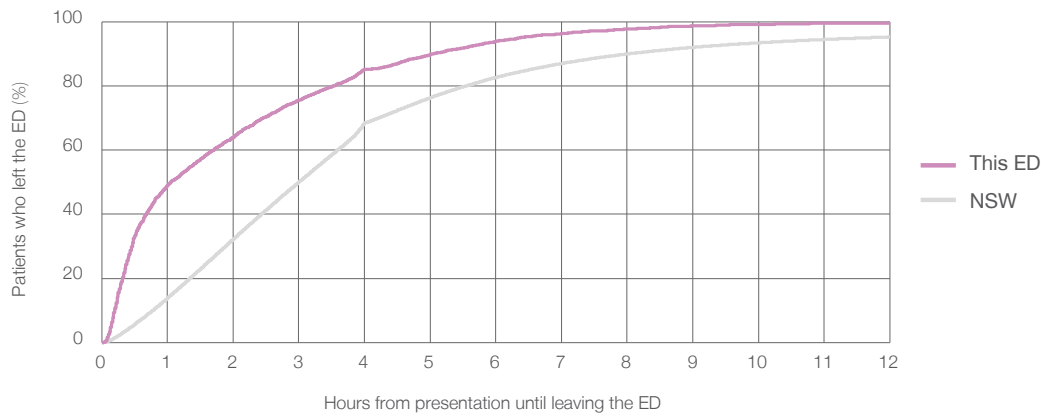
Presentations used to calculate time to leaving the ED:<sup>6</sup> 4,037 patients

Median time spent in the ED<sup>8</sup> 1 hours and 4 minutes

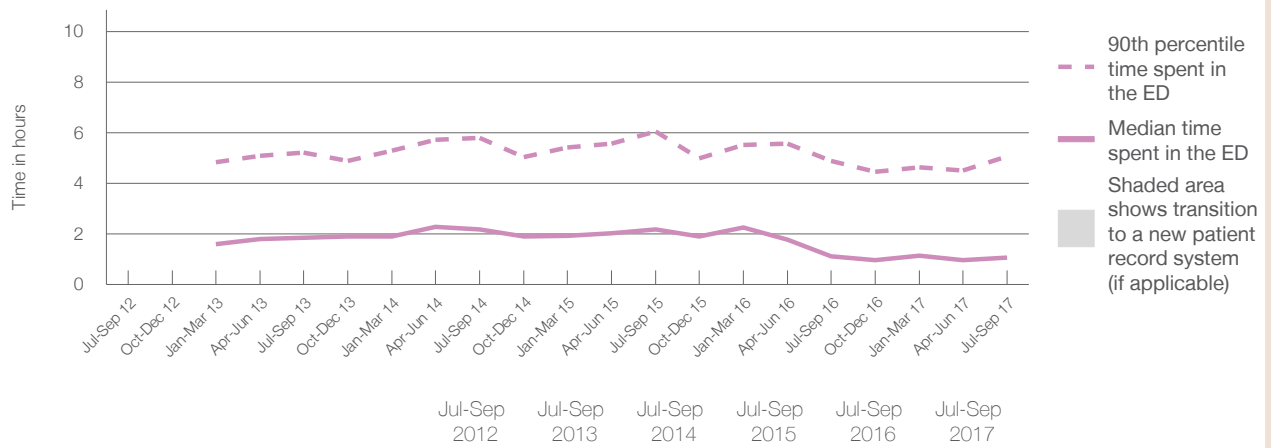
90th percentile time spent in the ED<sup>9</sup> 5 hours and 4 minutes

| Same period last year  | NSW (this period)     |
|------------------------|-----------------------|
| 3,567                  | 3,567                 |
| 1 hours and 7 minutes  | 3 hours and 0 minutes |
| 4 hours and 54 minutes | 8 hours and 2 minutes |

Percentage of patients who left the ED by time, July to September 2017



Time patients spent in the ED, by quarter, July 2012 to September 2017<sup>†‡§</sup>



|  | Jul-Sep 2012 | Jul-Sep 2013 | Jul-Sep 2014 | Jul-Sep 2015 | Jul-Sep 2016 | Jul-Sep 2017 |
|--|--------------|--------------|--------------|--------------|--------------|--------------|
| Median time to leaving the ED <sup>8</sup> (hours, minutes)          |              | 1h 52m       | 2h 11m       | 2h 11m       | 1h 7m        | 1h 4m        |
| 90th percentile time to leaving the ED <sup>9</sup> (hours, minutes) |              | 5h 13m       | 5h 48m       | 6h 4m        | 4h 54m       | 5h 4m        |

(†) Data points are not shown in graphs for quarters when patient numbers are too small.

(‡) Caution is advised when interpreting abrupt changes over time at the hospital level. For example, performance before and after transition to a new information system is not directly comparable. For more information, see Background Paper: Approaches to reporting time measures of emergency department performance, December 2011.

(§) Quarterly information for this hospital is shown where data are available from the Health Information Exchange, NSW Health. For more information, see Background Paper: Approaches to reporting time measures of emergency department performance, December 2011.

## Bateman's Bay District Hospital: Time patients spent in the ED

By mode of separation

July to September 2017

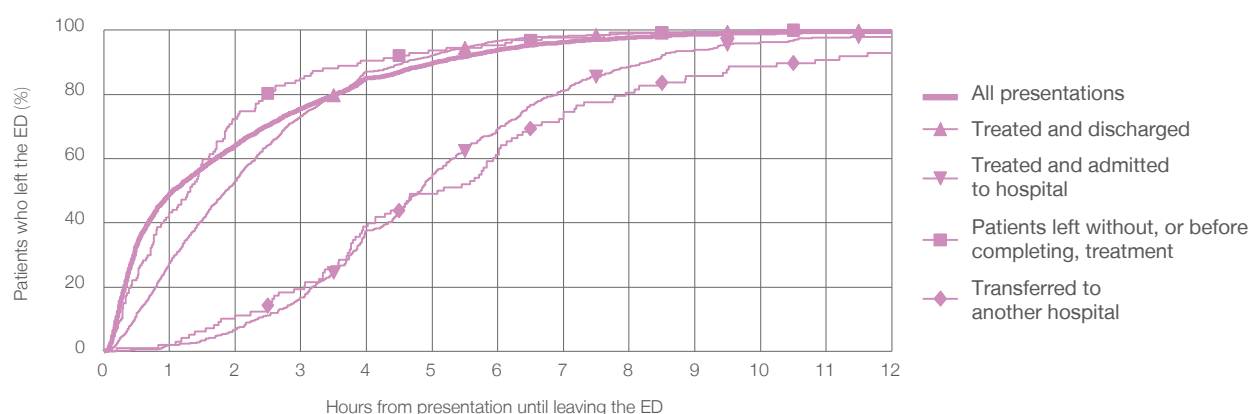
All presentations:<sup>1</sup> 4,039 patients

Presentations used to calculate time to leaving the ED:<sup>6</sup> 4,037 patients

|   |               |
|---|---------------|
| Treated and discharged                                | 1,809 (44.8%) |
| Treated and admitted to hospital                      | 463 (11.5%)   |
| Patient left without, or before completing, treatment | 127 (3.1%)    |
| Transferred to another hospital                       | 98 (2.4%)     |
| Other   | 1,542 (38.2%) |

| Same period last year | Change since one year ago |
|-----------------------|---------------------------|
| 3,567                 | 13.2%                     |
| 1,427                 | 26.8%                     |
| 681                   | -32.0%                    |
| 129                   | -1.6%                     |
| 127                   | -22.8%                    |
| 1,203                 | 28.2%                     |

Percentage of patients who left the ED by time and mode of separation, July to September 2017<sup>†‡§</sup>



1 hour 2 hours 3 hours 4 hours 6 hours 8 hours 10 hours 12 hours

|   | 1 hour | 2 hours | 3 hours | 4 hours | 6 hours | 8 hours | 10 hours | 12 hours |
|---|--------|---------|---------|---------|---------|---------|----------|----------|
| Treated and discharged                                | 27.4%  | 53.1%   | 73.2%   | 87.1%   | 96.7%   | 98.9%   | 99.7%    | 99.9%    |
| Treated and admitted to hospital                      | 1.9%   | 6.7%    | 16.6%   | 37.6%   | 69.3%   | 88.6%   | 96.3%    | 97.8%    |
| Patient left without, or before completing, treatment | 43.3%  | 72.4%   | 85.0%   | 90.6%   | 95.3%   | 99.2%   | 100%     | 100%     |
| Transferred to another hospital                       | 2.0%   | 11.2%   | 19.4%   | 38.8%   | 61.2%   | 80.6%   | 88.8%    | 92.9%    |
| All presentations                                     | 49.0%  | 64.1%   | 75.6%   | 85.1%   | 93.8%   | 97.7%   | 99.2%    | 99.5%    |

(†) Data points are not shown in graphs for quarters when patient numbers are too small.

(‡) Caution is advised when interpreting abrupt changes over time at the hospital level. For example, performance before and after transition to a new information system is not directly comparable. For more information, see Background Paper: Approaches to reporting time measures of emergency department performance, December 2011.

(§) Quarterly information for this hospital is shown where data are available from the Health Information Exchange, NSW Health. For more information, see Background Paper: Approaches to reporting time measures of emergency department performance, December 2011.



**Bateman's Bay District Hospital: Time spent in the ED**  
 Percentage of patients who spent four hours or less in the ED  
 July to September 2017

All presentations at the emergency department:<sup>1</sup> 4,039 patients

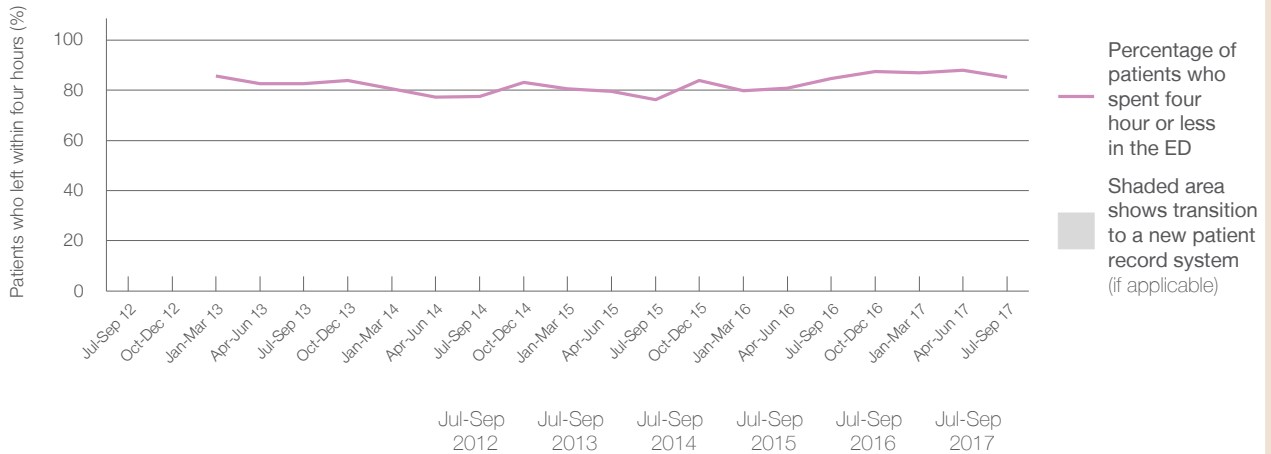
Presentations used to calculate time to leaving the ED:<sup>6</sup> 4,037 patients

Percentage of patients who spent four hours or less in the ED



|  | Same period last year | Change since one year ago |
|--|-----------------------|---------------------------|
| All presentations at the emergency department: <sup>1</sup>          | 3,567                 | 13.2%                     |
| Presentations used to calculate time to leaving the ED: <sup>6</sup> | 3,567                 | 13.2%                     |
| Percentage of patients who spent four hours or less in the ED        | 84.7%                 |                           |

Percentage of patients who spent four hours or less in the ED, by quarter, July 2012 to September 2017<sup>†‡§</sup>



| Patients who left within four hours (%) | Jul-Sep 2012 | Jul-Sep 2013 | Jul-Sep 2014 | Jul-Sep 2015 | Jul-Sep 2016 | Jul-Sep 2017 |
|---|--------------|--------------|--------------|--------------|--------------|--------------|
|   | 82.7%        | 77.5%        | 76.3%        | 84.7%        | 84.7%        | 85.1%        |

\* Suppressed due to small numbers and to protect privacy. Relevant graphs are also suppressed.  
 † Data points are not shown in graphs for quarters when patient numbers were too small.  
 ‡ Caution is advised when interpreting abrupt changes over time at the hospital level. For example, performance before and after transition to a new information system is not directly comparable. For more information see *Background Paper: Approaches to reporting time measures of emergency department performance, December 2011*.  
 § Quarterly information for this hospital is shown where data are available from the Health Information Exchange, NSW Health. For more information, see *Background Paper: Approaches to reporting time measures of emergency department performance, December 2011*.

- All emergency and non-emergency presentations at the emergency department (ED).
- All presentations that have a triage category and are coded as emergency presentations or unplanned return visits.
- Some patients are excluded from ED time measures due to calculation requirements. For details, see the *Technical Supplement: Emergency department measures, July to September 2016*.
- The median is the time by which half of patients started treatment. The other half of patients took equal to or longer than this time.
- The 90th percentile is the time by which 90% of patients started treatment. The final 10% of patients took equal to or longer than this time.
- All presentations that have a departure time.
- Transfer of care time refers to the period between arrival of patients at the ED by ambulance and the transfer of responsibility for their care from paramedics to ED staff in an ED treatment zone. For more information see *Spotlight on Measurement: measuring transfer of care from the ambulance to the emergency department*.
- The median is the time by which half of patients left the ED. The other half of patients took equal to or longer than this time.
- The 90th percentile is the time by which 90% of patients left the ED. The final 10% of patients took equal to or longer than this time.

**Note:** Presentation time is the earlier of times recorded for the start of clerical registration or the triage process.  
 Treatment time is the earliest time recorded when a healthcare professional provides medical care that is relevant to the patient's presenting problems. For patients who were treated and discharged, departure time is the time when treatment was completed. For all other patients, departure time is the time when the patient actually left the ED.

**Note:** All percentages are rounded and therefore percentages may not add to 100%.

**Sources:** ED data from Health Information Exchange, NSW Health(extracted 17 October 2017).  
 Transfer of care data from Transfer of Care Reporting System(extracted 17 October 2017).