

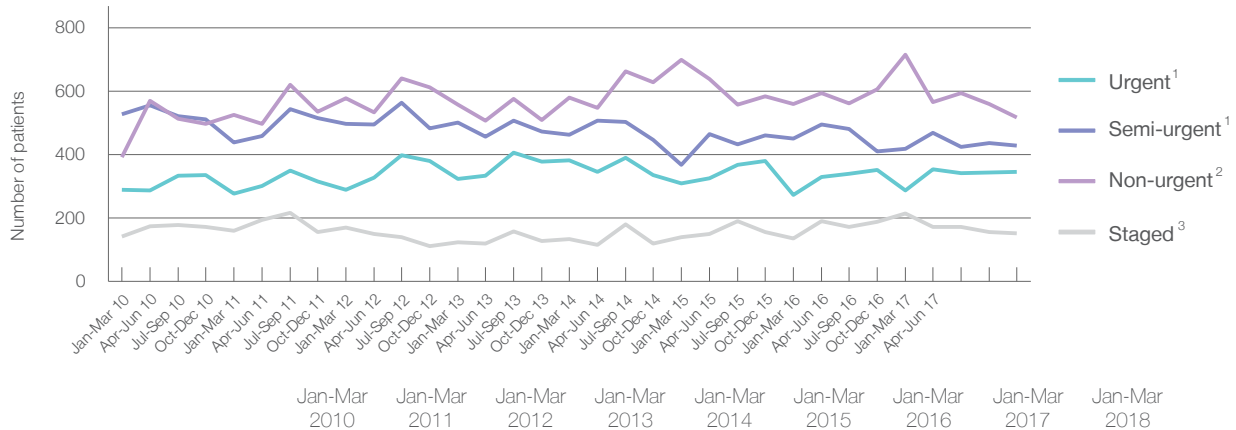
Gosford Hospital: Elective surgery performed

January to March 2018

Patients who received elective surgery by urgency category: 1,445 patients

		Same period last year	Change since one year ago
1 Urgent ¹	346 (24% of patients)	287	21%
2 Semi-urgent ¹	428 (30% of patients)	419	2%
3 Non-urgent ²	518 (36% of patients)	714	-27%
Staged ³	153 (11% of patients)	214	-29%

Patients who received elective surgery by urgency category by quarter, January 2013 to March 2018



	Jan-Mar 2010	Jan-Mar 2011	Jan-Mar 2012	Jan-Mar 2013	Jan-Mar 2014	Jan-Mar 2015	Jan-Mar 2016	Jan-Mar 2017	Jan-Mar 2018
All categories	1,350	1,403	1,533	1,504	1,557	1,518	1,419	1,634	1,445
Urgent ¹	289	278	289	323	383	310	274	287	346
Semi-urgent ¹	527	439	496	501	462	368	450	419	428
Non-urgent ²	392	526	577	557	579	699	560	714	518
Staged ³	142	160	171	123	133	141	135	214	153

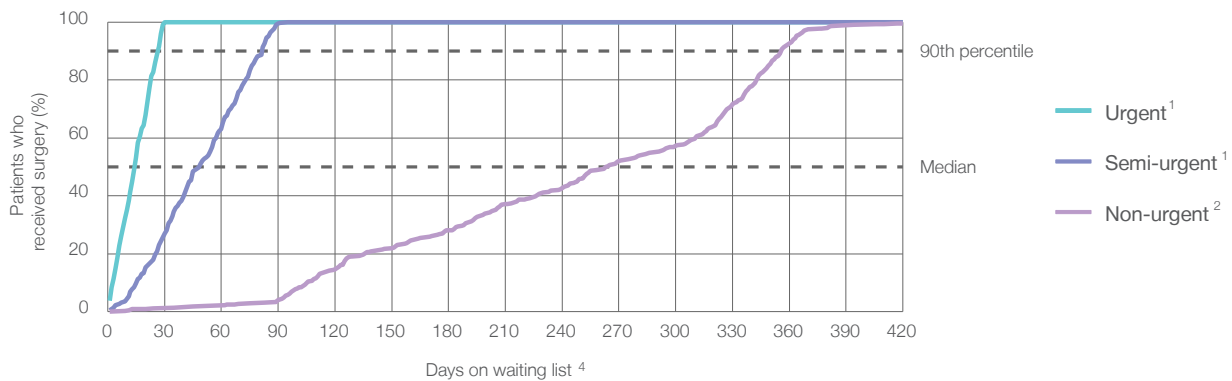
Gosford Hospital: Time waited to receive elective surgery

January to March 2018

Percentage of patients who received surgery within the clinically recommended timeframe

			Same period last year	Peer group (this period)
1	Urgent ¹	Recommended: 30 days	100%	99.7%
2	Semi-urgent ¹	Recommended: 90 days	98.8%	93.1%
3	Non-urgent ²	Recommended: 365 days	97.2%	91.4%

Percentage of patients who received elective surgery by waiting time (days)



Waiting time (days) for people who received surgery by urgency category

1	Urgent: ¹ 346 patients				
	Median time to receive surgery	<div><div></div>15 days</div>	9	15	8
	90th percentile time to receive surgery	<div><div></div>27 days</div>	25	26	25
2	Semi-urgent: ¹ 428 patients				
	Median time to receive surgery	<div><div></div>49 days</div>	45	49	42
	90th percentile time to receive surgery	<div><div></div>82 days</div>	87	83	85
3	Non-urgent: ² 518 patients				
	Median time to receive surgery	<div><div></div>264 days</div>	190	278	177
	90th percentile time to receive surgery	<div><div></div>356 days</div>	363	359	358

Gosford Hospital: Time waited to receive elective surgery

January to March 2018

Median⁵ waiting time (days) for patients who received elective surgery by specialty of surgeon

		Same period last year	Peer group (this period)
Cardiothoracic surgery	n/a (0 patients)	n/a	23
Ear, nose and throat surgery	195 days (303 patients)	334	191
General surgery	32 days (347 patients)	65	31
Gynaecology	112 days (170 patients)	119	32
Medical	* (< 5 patients)	*	14
Neurosurgery	n/a (0 patients)	n/a	63
Ophthalmology	164 days (71 patients)	166	152
Orthopaedic surgery	125 days (139 patients)	194	83
Plastic surgery	98 days (35 patients)	72	23
Urology	23 days (329 patients)	23	39
Vascular surgery	15 days (50 patients)	16	22

Median⁵ waiting time (days) for patients who received elective surgery by common procedures⁷

		Same period last year	Peer group (this period)
Abdominal hysterectomy	178 days (33 patients)	213	35
Cataract extraction	164 days (56 patients)	141	180
Cholecystectomy	55 days (40 patients)	66	59
Coronary artery bypass graft	n/a (0 patients)	n/a	42
Cystoscopy	31 days (109 patients)	26	32
Haemorrhoidectomy	* (9 patients)	80	83
Hysteroscopy	97 days (66 patients)	84	43
Inguinal herniorrhaphy	97 days (38 patients)	96	76
Myringoplasty / Tympanoplasty	* (< 5 patients)	*	335
Myringotomy	n/a (0 patients)	n/a	197
Other - General	29 days (34 patients)	40	21
Prostatectomy	35 days (23 patients)	53	70
Septoplasty	343 days (51 patients)	351	344
Tonsillectomy	319 days (119 patients)	342	330
Total hip replacement	178 days (19 patients)	235	147
Total knee replacement	228 days (23 patients)	240	253
Varicose veins stripping and ligation	* (8 patients)	31	79

Gosford Hospital: Elective surgery waiting list

January to March 2018

Patients ready for surgery on waiting list at start of quarter: 2,111 patients

Patients ready for surgery on waiting list at end of quarter: 2,161 patients

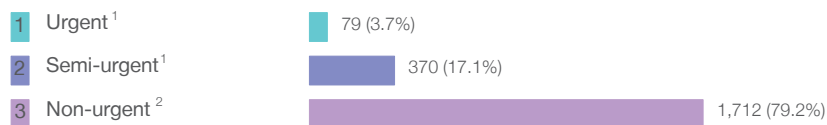
Patients not ready for surgery⁸ on waiting list at end of quarter: 484 patients

Same period last year	Change since one year ago
2,160	-2%
2,068	4%
489	-1%

Gosford Hospital: Patients ready for elective surgery

as at 31st March 2018

Patients ready for surgery on waiting list by urgency category: 2,161 patients



Same period last year	Change since one year ago
73	8%
352	5%
1,643	4%

Gosford Hospital: Patients ready for elective surgery as at 31st March 2018

Patients ready for elective surgery by specialty of surgeon: 2,161 patients

	As at 31 Mar 2018	Same time last year	Change since one year ago
All specialties	2,161	2,068	4%
Cardiothoracic surgery	0	0	n/a
Ear, nose and throat surgery	822	820	0%
General surgery	339	275	23%
Gynaecology	294	295	0%
Medical	0	0	n/a
Neurosurgery	0	0	n/a
Ophthalmology	65	83	-22%
Orthopaedic surgery	455	400	14%
Plastic surgery	41	60	-32%
Urology	140	121	16%
Vascular surgery	5	14	-64%

Patients ready for elective surgery for common procedures ⁷

	As at 31 Mar 2018	Same time last year	Change since one year ago
Abdominal hysterectomy	69	58	19%
Cataract extraction	29	56	-48%
Cholecystectomy	60	36	67%
Coronary artery bypass graft	0	< 5	n/a
Cystoscopy	32	29	10%
Haemorrhoidectomy	< 5	6	*
Hysteroscopy	77	78	-1%
Inguinal herniorrhaphy	63	49	29%
Myringoplasty / Tympanoplasty	18	18	0%
Myringotomy	0	< 5	n/a
Other - General	22	31	-29%
Prostatectomy	15	17	-12%
Septoplasty	190	176	8%
Tonsillectomy	367	378	-3%
Total hip replacement	84	78	8%
Total knee replacement	158	135	17%
Varicose veins stripping and ligation	< 5	< 5	n/a

Gosford Hospital: Patients ready for elective surgery as at 31st March 2018

Patients ready for elective surgery, on the waiting list for longer than 12 months

As at 31 Mar 2018

Same time last year

All specialties	< 5	< 5
-----------------	-----	-----

* Suppressed due to small numbers and to protect privacy. Relevant graphs are also suppressed.

< 5 Less than five patients. For measures by urgency category, counts are included in an adjacent category. Relevant graphs are also suppressed.

1. Excluding staged procedures.
2. Excluding staged procedures and cystoscopy.
3. Including non-urgent cystoscopy.
4. Excludes the total number of days the patient was coded as 'not ready for surgery'.
5. This is the number of days it took for half of patients who received elective surgery during the period to be admitted and receive their surgery. The other half took equal to or longer than the median to be admitted for surgery.
6. This is the number of days it took for 90% of patients who received elective surgery during the period to be admitted and receive their surgery. The final 10% of patients took equal to or longer than the 90th percentile.
7. The procedures included in this list are procedures which are high volume; some may be associated with long waiting periods. For a description of these procedures see *Elective Surgery Glossary of Common Procedures, December 2012*.
8. Includes staged procedures, non-urgent cystoscopy, and patients currently not available for personal reasons.

For more information: For details of methods, see the *Technical Supplement: Elective surgery measures, January to March 2018*.

Note: All percentages rounded to whole numbers and therefore percentages may not add to 100%.

Source: Waiting List Collection On-Line System, NSW Health (extracted 13 April 2018.).