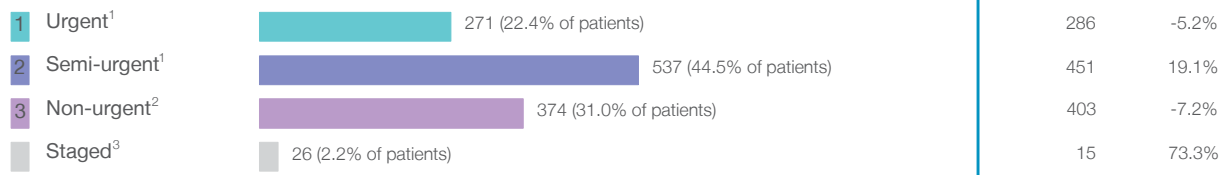


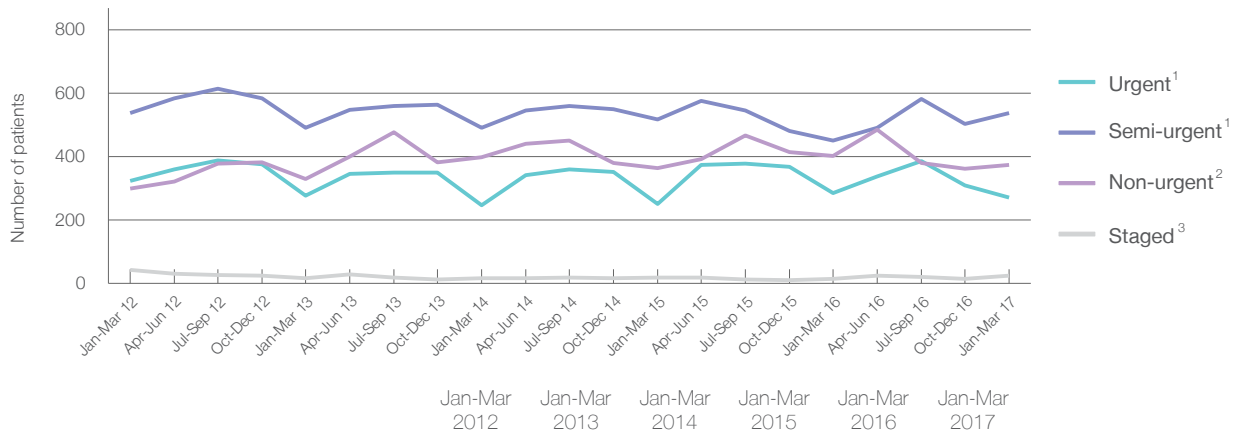
Prince of Wales Hospital: Elective surgery performed

January to March 2017

Patients who received elective surgery by urgency category: 1,208 patients



Patients who received elective surgery by urgency category by quarter, January 2012 to March 2017



All categories	1,205	1,114	1,154	1,151	1,155	1,208
Urgent ¹	323	277	247	250	286	271
Semi-urgent ¹	538	491	491	518	451	537
Non-urgent ²	300	329	399	363	403	374
Staged ³	44	17	17	20	15	26

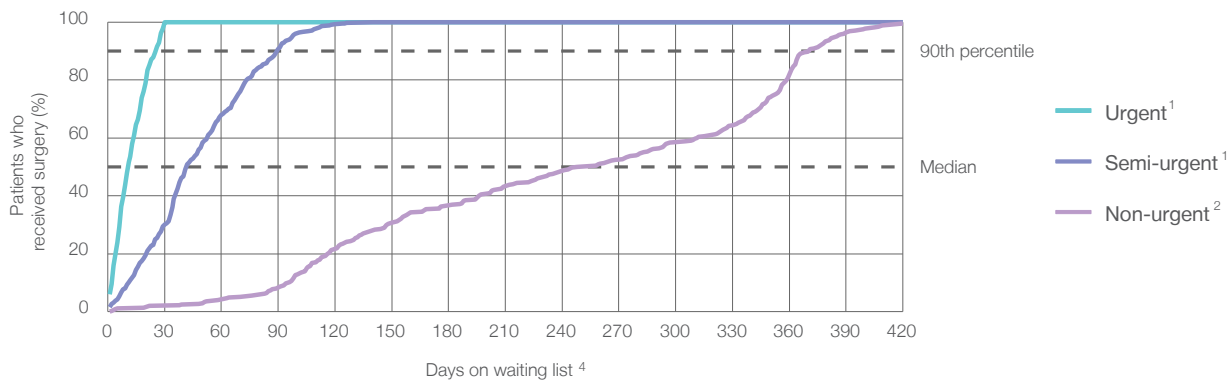
Prince of Wales Hospital: Time waited to receive elective surgery

January to March 2017

Percentage of patients who received surgery within the clinically recommended timeframe

			Same period last year	Peer group (this period)
1	Urgent ¹	Recommended: 30 days	100%	99.5%
2	Semi-urgent ¹	Recommended: 90 days	96.5%	94.5%
3	Non-urgent ²	Recommended: 365 days	97.5%	95.0%

Percentage of patients who received elective surgery by waiting time (days)



Waiting time (days) for people who received surgery by urgency category

		Peer group (this period)	This hospital (same period last year)	Peer group (same period last year)
1	Urgent: ¹ 271 patients			
	Median time to receive surgery	11 days	8	11
	90th percentile time to receive surgery	26 days	25	25
2	Semi-urgent: ¹ 537 patients			
	Median time to receive surgery	42 days	42	47
	90th percentile time to receive surgery	90 days	85	84
3	Non-urgent: ² 374 patients			
	Median time to receive surgery	251 days	177	228
	90th percentile time to receive surgery	371 days	358	359

Prince of Wales Hospital: Time waited to receive elective surgery

January to March 2017

Median ⁵ waiting time (days) for patients who received elective surgery by specialty of surgeon		Same period last year	Peer group (this period)
Cardiothoracic surgery	33 days (63 patients)	55	28
Ear, nose and throat surgery	33 days (93 patients)	65	158
General surgery	39 days (279 patients)	43	30
Gynaecology	n/a (0 patients)	n/a	32
Medical	n/a (0 patients)	n/a	22
Neurosurgery	59 days (77 patients)	185	56
Ophthalmology	128 days (51 patients)	73	126
Orthopaedic surgery	132 days (259 patients)	140	86
Plastic surgery	39 days (92 patients)	66	23
Urology	36 days (249 patients)	27	34
Vascular surgery	30 days (45 patients)	19	21

Median ⁵ waiting time (days) for patients who received elective surgery by common procedures ⁷		Same period last year	Peer group (this period)
Abdominal hysterectomy	n/a (0 patients)	n/a	49
Cataract extraction	233 days (23 patients)	89	156
Cholecystectomy	54 days (38 patients)	*	42
Coronary artery bypass graft	30 days (18 patients)	63	42
Cystoscopy	34 days (29 patients)	23	29
Haemorrhoidectomy	* (8 patients)	*	90
Hysteroscopy	n/a (0 patients)	n/a	34
Inguinal herniorrhaphy	90 days (36 patients)	*	69
Myringoplasty / Tympanoplasty	* (< 5 patients)	*	269
Myringotomy	n/a (0 patients)	n/a	88
Other - General	28 days (64 patients)	36	22
Prostatectomy	55 days (33 patients)	49	69
Septoplasty	* (7 patients)	328	337
Tonsillectomy	* (< 5 patients)	*	333
Total hip replacement	147 days (34 patients)	161	102
Total knee replacement	310 days (40 patients)	337	249
Varicose veins stripping and ligation	* (< 5 patients)	*	111

Prince of Wales Hospital: Elective surgery waiting list

January to March 2017

Patients ready for surgery on waiting list at start of quarter: 2,046 patients

Patients ready for surgery on waiting list at end of quarter: 2,018 patients

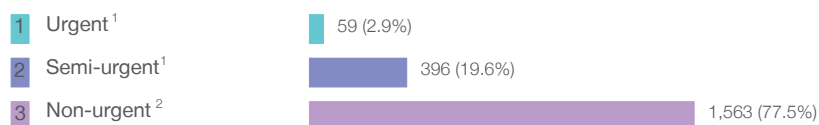
Patients not ready for surgery⁸ on waiting list at end of quarter: 250 patients

Same period last year	Change since one year ago
1,901	7.6%
1,887	6.9%
208	20.2%

Prince of Wales Hospital: Patients ready for elective surgery

as at 31st March 2017

Patients ready for surgery on waiting list by urgency category: 2,018 patients



Same period last year	Change since one year ago
57	3.5%
312	26.9%
1,518	3.0%

Prince of Wales Hospital: Patients ready for elective surgery as at 31st March 2017

Patients ready for elective surgery by specialty of surgeon: 2,018 patients

	As at 31 Mar 2017	Same time last year	Change since one year ago
All specialties	2,018	1,887	6.9%
Cardiothoracic surgery	27	30	-10.0%
Ear, nose and throat surgery	254	229	10.9%
General surgery	348	342	1.8%
Gynaecology	0	0	n/a
Medical	0	0	n/a
Neurosurgery	149	141	5.7%
Ophthalmology	114	67	70.1%
Orthopaedic surgery	775	813	-4.7%
Plastic surgery	140	132	6.1%
Urology	166	102	62.7%
Vascular surgery	45	31	45.2%

Patients ready for elective surgery for common procedures ⁷

	As at 31 Mar 2017	Same time last year	Change since one year ago
Abdominal hysterectomy	0	< 5	n/a
Cataract extraction	77	24	220.8%
Cholecystectomy	12	< 5	*
Coronary artery bypass graft	9	5	80.0%
Cystoscopy	19	21	-9.5%
Haemorrhoidectomy	19	12	58.3%
Hysteroscopy	0	< 5	n/a
Inguinal herniorrhaphy	67	21	219.0%
Myringoplasty / Tympanoplasty	13	17	-23.5%
Myringotomy	< 5	< 5	n/a
Other - General	84	229	-63.3%
Prostatectomy	19	7	171.4%
Septoplasty	59	80	-26.3%
Tonsillectomy	21	25	-16.0%
Total hip replacement	95	97	-2.1%
Total knee replacement	179	172	4.1%
Varicose veins stripping and ligation	19	6	216.7%

Prince of Wales Hospital: Patients ready for elective surgery as at 31st March 2017

Patients ready for elective surgery, on the waiting list for longer than 12 months

As at 31 Mar 2017

Same time last year

All specialties	36	< 5
-----------------	----	-----

- * Suppressed due to small numbers and to protect privacy. Relevant graphs are also suppressed.
- < 5 Less than five patients. For measures by urgency category, counts are included in an adjacent category. Relevant graphs are also suppressed.
1. Excluding staged procedures.
 2. Excluding staged procedures and cystoscopy.
 3. Including non-urgent cystoscopy.
 4. Excludes the total number of days the patient was coded as 'not ready for surgery'.
 5. This is the number of days it took for half of patients who received elective surgery during the period to be admitted and receive their surgery. The other half took equal to or longer than the median to be admitted for surgery.
 6. This is the number of days it took for 90% of patients who received elective surgery during the period to be admitted and receive their surgery. The final 10% of patients took equal to or longer than the 90th percentile.
 7. The procedures included in this list are procedures which are high volume; some may be associated with long waiting periods. For a description of these procedures see *Elective Surgery Glossary of Common Procedures, December 2012*.
 8. Includes staged procedures, non-urgent cystoscopy, and patients currently not available for personal reasons.
- For more information:** For details of methods, see the *Technical Supplement: Elective surgery measures, July to September 2016*.
- Note:** All percentages rounded to whole numbers and therefore percentages may not add to 100%.
- Source:** Waiting List Collection On-Line System, NSW Health (extracted 18 April 2017.).