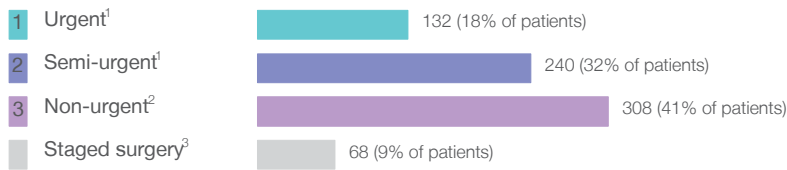


## Orange Health Service: Elective surgery performed

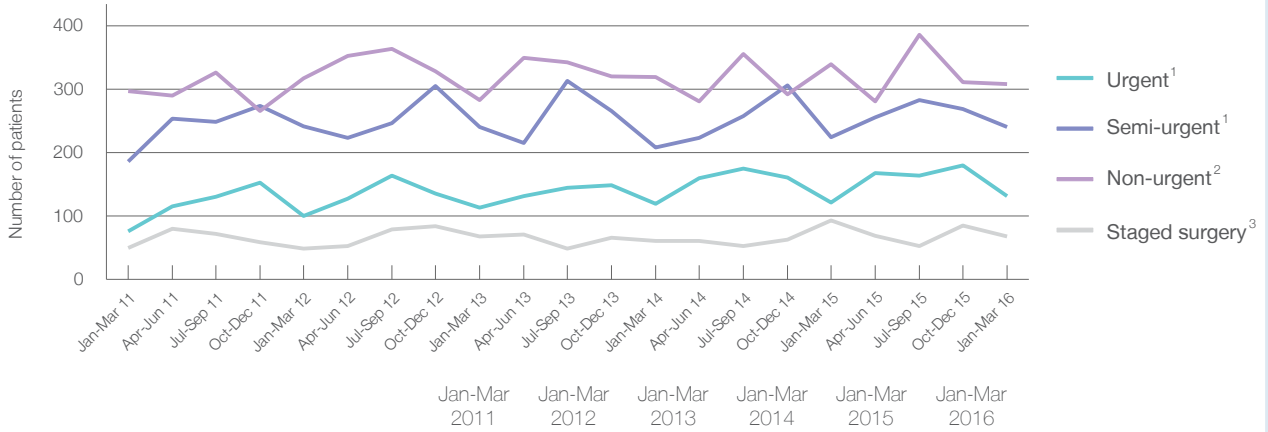
January to March 2016

Patients who received elective surgery by urgency category: 748 patients



Urgency Category	Same period last year	Change since one year ago
1 Urgent <sup>1</sup>	121	9%
2 Semi-urgent <sup>1</sup>	224	7%
3 Non-urgent <sup>2</sup>	339	-9%
Staged surgery <sup>3</sup>	93	-27%

Patients who received elective surgery by urgency category by quarter, January 2011 to March 2016



Urgency Category	Jan-Mar 2011	Jan-Mar 2012	Jan-Mar 2013	Jan-Mar 2014	Jan-Mar 2015	Jan-Mar 2016
All categories	609	707	704	707	777	748
Urgent <sup>1</sup>	76	100	113	119	121	132
Semi-urgent <sup>1</sup>	186	241	240	208	224	240
Non-urgent <sup>2</sup>	297	317	283	319	339	308
Staged surgery <sup>3</sup>	50	49	68	61	93	68

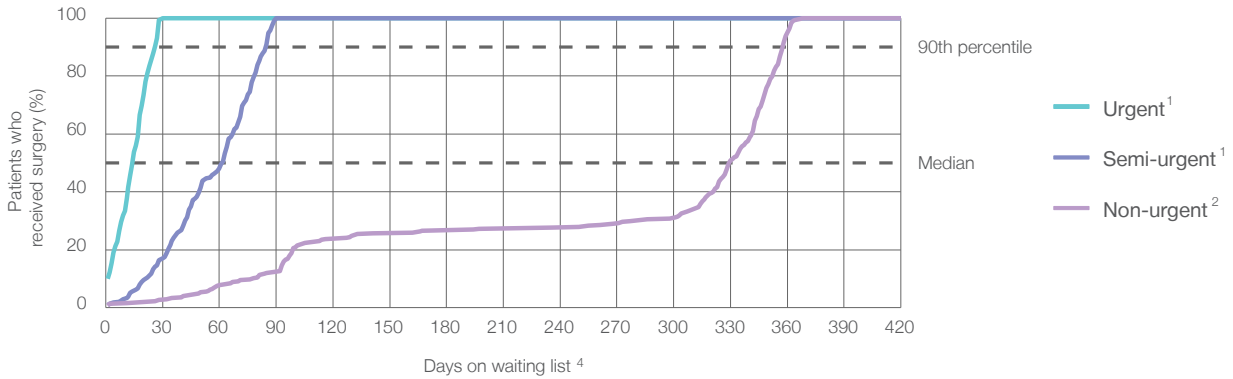
## Orange Health Service: Time waited to receive elective surgery

January to March 2016

Percentage of patients who received surgery within the clinically recommended timeframe

	Recommended:		Same period last year	Peer group (this period)
1 Urgent <sup>1</sup>	30 days	100%	100%	99%
2 Semi-urgent <sup>1</sup>	90 days	100%	100%	98%
3 Non-urgent <sup>2</sup>	365 days	99%	100%	96%

Percentage of patients who received elective surgery by waiting time (days)



Waiting time (days) for people who received surgery by urgency category

		Peer group (this period)	This hospital (same period last year)	Peer group (same period last year)
<b>1 Urgent:</b> <sup>1</sup> 132 patients				
Median time to receive surgery	15 days	13	11	13
90th percentile time to receive surgery	26 days	27	27	27
<b>2 Semi-urgent:</b> <sup>1</sup> 240 patients				
Median time to receive surgery	62 days	51	63	54
90th percentile time to receive surgery	85 days	85	86	86
<b>3 Non-urgent:</b> <sup>2</sup> 308 patients				
Median time to receive surgery	330 days	273	338	286
90th percentile time to receive surgery	358 days	358	359	360

## Orange Health Service: Time waited to receive elective surgery

January to March 2016

Median <sup>5</sup> waiting time (days) for patients who received elective surgery by specialty of surgeon		Same period last year	Peer group (this period)
Cardiothoracic surgery	n/a (0 patients)	n/a	n/a
Ear, nose and throat surgery	324 days (73 patients)	106	281
General surgery	59 days (171 patients)	67	59
Gynaecology	38 days (73 patients)	48	54
Medical	17 days (13 patients)	*	15
Neurosurgery	n/a (0 patients)	n/a	n/a
Ophthalmology	341 days (67 patients)	345	285
Orthopaedic surgery	94 days (192 patients)	323	223
Plastic surgery	n/a (0 patients)	n/a	78
Urology	63 days (159 patients)	62	44
Vascular surgery	n/a (0 patients)	n/a	24

Median <sup>5</sup> waiting time (days) for patients who received elective surgery by common procedures <sup>7</sup>		Same period last year	Peer group (this period)
Abdominal hysterectomy	* (7 patients)	87	81
Cataract extraction	343 days (57 patients)	344	293
Cholecystectomy	52 days (22 patients)	92	71
Coronary artery bypass graft	n/a (0 patients)	n/a	n/a
Cystoscopy	68 days (45 patients)	35	29
Haemorrhoidectomy	* (< 5 patients)	n/a	78
Hysteroscopy	24 days (33 patients)	30	40
Inguinal herniorrhaphy	63 days (21 patients)	77	95
Myringoplasty / Tympanoplasty	n/a (0 patients)	*	345
Myringotomy	* (6 patients)	*	68
Other - General	34 days (22 patients)	75	41
Prostatectomy	67 days (15 patients)	76	76
Septoplasty	* (< 5 patients)	*	329
Tonsillectomy	336 days (45 patients)	171	294
Total hip replacement	326 days (25 patients)	330	259
Total knee replacement	337 days (34 patients)	317	311
Varicose veins stripping and ligation	* (< 5 patients)	*	111

## Orange Health Service: Elective surgery waiting list

January to March 2016

Patients ready for surgery on waiting list at start of quarter: 1,401 patients

Patients ready for surgery on waiting list at end of quarter: 1,470 patients

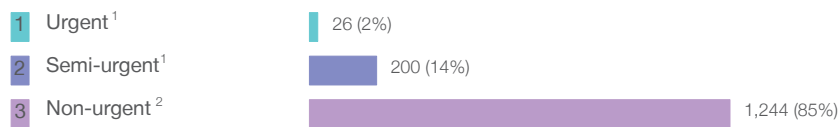
Patients not ready for surgery<sup>8</sup> on waiting list at end of quarter: 158 patients

	Same period last year	Change since one year ago
Patients ready for surgery on waiting list at start of quarter	1,386	1%
Patients ready for surgery on waiting list at end of quarter	1,408	4%
Patients not ready for surgery <sup>8</sup> on waiting list at end of quarter	152	4%

## Orange Health Service: Patients ready for elective surgery

as at 31st March 2016

Patients ready for surgery on waiting list by urgency category: 1,470 patients



	Same period last year	Change since one year ago
Urgent <sup>1</sup>	22	18%
Semi-urgent <sup>1</sup>	176	14%
Non-urgent <sup>2</sup>	1,210	3%

## Orange Health Service: Patients ready for elective surgery

as at 31st March 2016

Patients ready for elective surgery by specialty of surgeon: 1,470 patients

	As at 31 Mar 2016	Same time last year	Change since one year ago
All specialties	1,470	1,408	4%
Cardiothoracic surgery	0	0	n/a
Ear, nose and throat surgery	157	228	-31%
General surgery	203	203	0%
Gynaecology	74	72	3%
Medical	0	< 5	*
Neurosurgery	0	0	n/a
Ophthalmology	340	257	32%
Orthopaedic surgery	595	534	11%
Plastic surgery	0	0	n/a
Urology	101	112	-10%
Vascular surgery	0	0	n/a

Patients ready for elective surgery for common procedures<sup>7</sup>

	As at 31 Mar 2016	Same time last year	Change since one year ago
Abdominal hysterectomy	13	12	8%
Cataract extraction	310	222	40%
Cholecystectomy	33	28	18%
Coronary artery bypass graft	0	< 5	n/a
Cystoscopy	20	27	-26%
Haemorrhoidectomy	< 5	< 5	*
Hysteroscopy	21	13	62%
Inguinal herniorrhaphy	25	26	-4%
Myringoplasty / Tympanoplasty	10	9	11%
Myringotomy	9	9	0%
Other - General	14	12	17%
Prostatectomy	12	7	71%
Septoplasty	21	20	5%
Tonsillectomy	78	130	-40%
Total hip replacement	90	74	22%
Total knee replacement	191	172	11%
Varicose veins stripping and ligation	18	29	-38%

## Orange Health Service: Patients ready for elective surgery as at 31st March 2016

Patients ready for elective surgery, on the waiting list for longer than 12 months

As at 31 Mar 2016      Same time last year

All specialties	< 5	0
-----------------	-----	---

\* Suppressed due to small numbers and to protect privacy. Relevant graphs are also suppressed.

< 5 Less than five patients. For measures by urgency category, counts are included in an adjacent category. Relevant graphs are also suppressed.

1. Excluding staged procedures.
2. Excluding staged procedures and cystoscopy.
3. Including non-urgent cystoscopy.
4. Excludes the total number of days the patient was coded as 'not ready for surgery'.
5. This is the number of days it took for half of patients who received elective surgery during the period to be admitted and receive their surgery. The other half took equal to or longer than the median to be admitted for surgery.
6. This is the number of days it took for 90% of patients who received elective surgery during the period to be admitted and receive their surgery. The final 10% of patients took equal to or longer than the 90th percentile.
7. The procedures included in this list are procedures which are high volume; some may be associated with long waiting periods. For a description of these procedures see *Elective Surgery Glossary of Common Procedures, December 2012*.
8. Includes staged procedures, non-urgent cystoscopy, and patients currently not available for personal reasons.

For more information: For details of methods, see the *Technical Supplement: Elective surgery measures, January to March 2013*.

**Note:** All percentages rounded to whole numbers and therefore percentages may not add to 100%.

**Source:** Waiting List Collection On-Line System, NSW Health (extracted 15 April 2016).