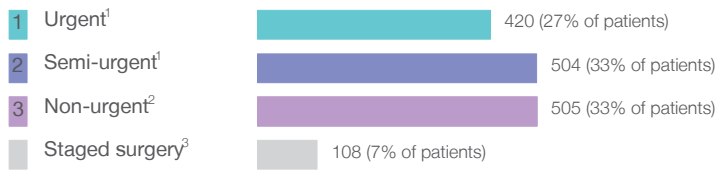


Liverpool Hospital: Elective surgery performed

January to March 2016

Patients who received elective surgery by urgency category: 1,537 patients



	Same period last year	Change since one year ago
Urgent ¹	373	13%
Semi-urgent ¹	546	-8%
Non-urgent ²	628	-20%
Staged surgery ³	86	26%

Patients who received elective surgery by urgency category by quarter, January 2011 to March 2016

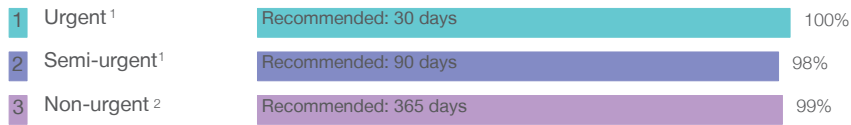


	Jan-Mar 2011	Jan-Mar 2012	Jan-Mar 2013	Jan-Mar 2014	Jan-Mar 2015	Jan-Mar 2016
All categories	1,623	1,636	1,580	1,570	1,633	1,537
Urgent ¹	564	606	400	395	373	420
Semi-urgent ¹	420	503	537	538	546	504
Non-urgent ²	496	484	580	560	628	505
Staged surgery ³	143	43	63	77	86	108

Liverpool Hospital: Time waited to receive elective surgery

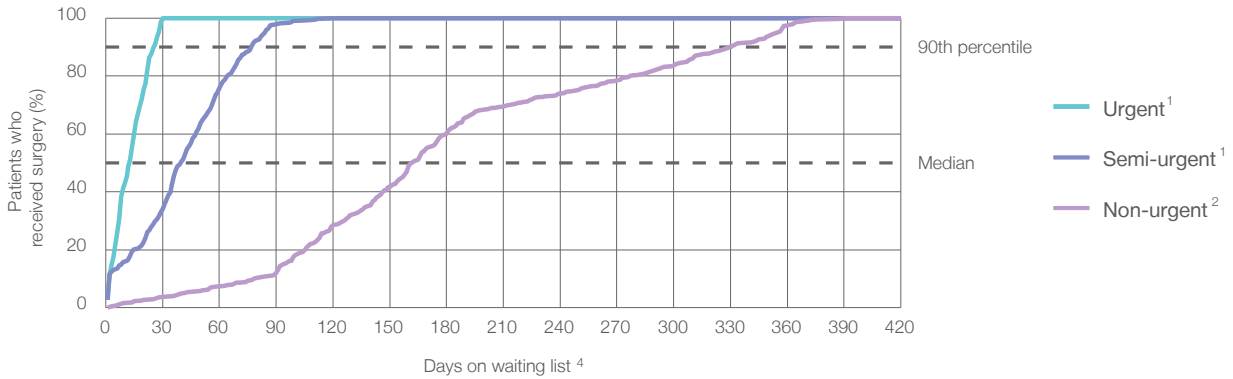
January to March 2016

Percentage of patients who received surgery within the clinically recommended timeframe



	Same period last year	Peer group (this period)
Urgent ¹	100%	100%
Semi-urgent ¹	100%	96%
Non-urgent ²	100%	95%

Percentage of patients who received elective surgery by waiting time (days)



Waiting time (days) for people who received surgery by urgency category

1 Urgent:¹ 420 patients

Median time to receive surgery: 13 days
 90th percentile time to receive surgery: 26 days

2 Semi-urgent:¹ 504 patients

Median time to receive surgery: 40 days
 90th percentile time to receive surgery: 77 days

3 Non-urgent:² 505 patients

Median time to receive surgery: 162 days
 90th percentile time to receive surgery: 330 days

	Peer group (this period)	This hospital (same period last year)	Peer group (same period last year) ¹
Urgent ¹ (Median)	8	13	9
Urgent ¹ (90th percentile)	25	26	24
Semi-urgent ¹ (Median)	44	42	44
Semi-urgent ¹ (90th percentile)	84	79	83
Non-urgent ² (Median)	176	216	171
Non-urgent ² (90th percentile)	356	339	354

Liverpool Hospital: Time waited to receive elective surgery

January to March 2016

Specialty	Median ⁵ waiting time (days) for patients who received elective surgery by specialty of surgeon	Same period last year	Peer group (this period)
Cardiothoracic surgery	47 days (80 patients)	31	26
Ear, nose and throat surgery	117 days (98 patients)	210	124
General surgery	32 days (399 patients)	43	30
Gynaecology	34 days (233 patients)	47	29
Medical	* (< 5 patients)	*	22
Neurosurgery	85 days (112 patients)	95	57
Ophthalmology	160 days (198 patients)	224	154
Orthopaedic surgery	11 days (61 patients)	13	90
Plastic surgery	19 days (82 patients)	44	28
Urology	36 days (135 patients)	49	35
Vascular surgery	18 days (136 patients)	23	20

Procedure	Median ⁵ waiting time (days) for patients who received elective surgery by common procedures ⁷	Same period last year	Peer group (this period)
Abdominal hysterectomy	29 days (23 patients)	36	41
Cataract extraction	160 days (167 patients)	230	169
Cholecystectomy	85 days (53 patients)	68	60
Coronary artery bypass graft	72 days (22 patients)	62	28
Cystoscopy	28 days (46 patients)	30	30
Haemorrhoidectomy	* (5 patients)	*	85
Hysteroscopy	22 days (76 patients)	34	34
Inguinal herniorrhaphy	103 days (21 patients)	83	78
Myringoplasty / Tympanoplasty	* (6 patients)	324	308
Myringotomy	n/a (0 patients)	*	80
Other - General	20 days (71 patients)	32	22
Prostatectomy	22 days (15 patients)	30	73
Septoplasty	* (< 5 patients)	*	328
Tonsillectomy	258 days (20 patients)	262	281
Total hip replacement	* (< 5 patients)	*	161
Total knee replacement	* (< 5 patients)	*	294
Varicose veins stripping and ligation	n/a (0 patients)	n/a	106

Liverpool Hospital: Elective surgery waiting list

January to March 2016

Patients ready for surgery on waiting list at start of quarter: 1,770 patients

Patients ready for surgery on waiting list at end of quarter: 1,920 patients

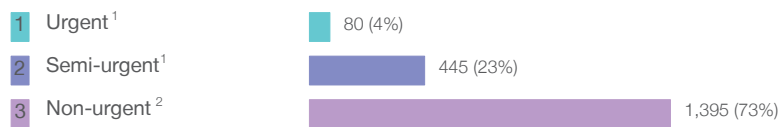
Patients not ready for surgery⁸ on waiting list at end of quarter: 672 patients

	Same period last year	Change since one year ago
Patients ready for surgery on waiting list at start of quarter	1,972	-10%
Patients ready for surgery on waiting list at end of quarter	1,831	5%
Patients not ready for surgery ⁸ on waiting list at end of quarter	457	47%

Liverpool Hospital: Patients ready for elective surgery

as at 31st March 2016

Patients ready for surgery on waiting list by urgency category: 1,920 patients



	Same period last year	Change since one year ago
Urgent ¹	87	-8%
Semi-urgent ¹	405	10%
Non-urgent ²	1,339	4%

Liverpool Hospital: Patients ready for elective surgery as at 31st March 2016

Patients ready for elective surgery by specialty of surgeon: 1,920 patients

	As at 31 Mar 2016	Same time last year	Change since one year ago
All specialties	1,920	1,831	5%
Cardiothoracic surgery	35	35	0%
Ear, nose and throat surgery	372	247	51%
General surgery	550	439	25%
Gynaecology	231	260	-11%
Medical	< 5	0	n/a
Neurosurgery	210	185	14%
Ophthalmology	298	396	-25%
Orthopaedic surgery	24	28	-14%
Plastic surgery	56	58	-3%
Urology	86	131	-34%
Vascular surgery	56	52	8%

Patients ready for elective surgery for common procedures⁷

	As at 31 Mar 2016	Same time last year	Change since one year ago
Abdominal hysterectomy	41	32	28%
Cataract extraction	247	346	-29%
Cholecystectomy	91	56	63%
Coronary artery bypass graft	17	16	6%
Cystoscopy	5	15	-67%
Haemorrhoidectomy	14	9	56%
Hysteroscopy	56	78	-28%
Inguinal herniorrhaphy	79	66	20%
Myringoplasty / Tympanoplasty	26	19	37%
Myringotomy	13	5	160%
Other - General	40	42	-5%
Prostatectomy	12	7	71%
Septoplasty	41	26	58%
Tonsillectomy	139	87	60%
Total hip replacement	< 5	< 5	*
Total knee replacement	0	< 5	*
Varicose veins stripping and ligation	0	< 5	n/a

Liverpool Hospital: Patients ready for elective surgery as at 31st March 2016

Patients ready for elective surgery, on the waiting list for longer than 12 months

As at 31 Mar 2016

Same time last year

All specialties	< 5	< 5
-----------------	-----	-----

* Suppressed due to small numbers and to protect privacy. Relevant graphs are also suppressed.

< 5 Less than five patients. For measures by urgency category, counts are included in an adjacent category. Relevant graphs are also suppressed.

1. Excluding staged procedures.
2. Excluding staged procedures and cystoscopy.
3. Including non-urgent cystoscopy.
4. Excludes the total number of days the patient was coded as 'not ready for surgery'.
5. This is the number of days it took for half of patients who received elective surgery during the period to be admitted and receive their surgery. The other half took equal to or longer than the median to be admitted for surgery.
6. This is the number of days it took for 90% of patients who received elective surgery during the period to be admitted and receive their surgery. The final 10% of patients took equal to or longer than the 90th percentile.
7. The procedures included in this list are procedures which are high volume; some may be associated with long waiting periods. For a description of these procedures see *Elective Surgery Glossary of Common Procedures, December 2012*.
8. Includes staged procedures, non-urgent cystoscopy, and patients currently not available for personal reasons.

For more information: For details of methods, see the *Technical Supplement: Elective surgery measures, January to March 2013*.

Note: All percentages rounded to whole numbers and therefore percentages may not add to 100%.

Source: Waiting List Collection On-Line System, NSW Health (extracted 15 April 2016).