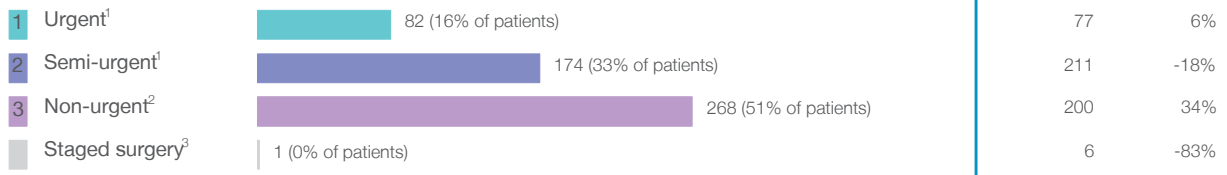


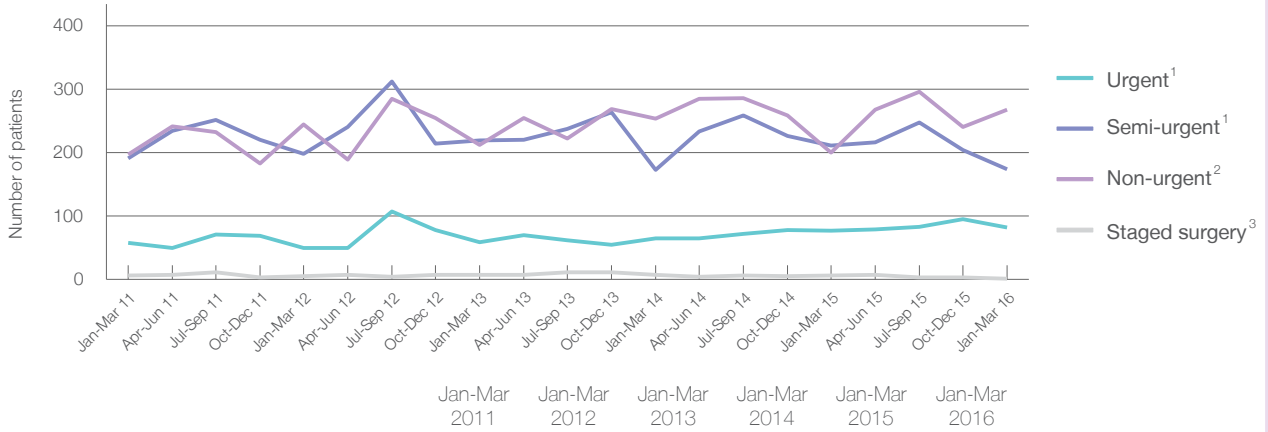
## Mount Druiitt Hospital: Elective surgery performed

January to March 2016

Patients who received elective surgery by urgency category: 525 patients



Patients who received elective surgery by urgency category by quarter, January 2011 to March 2016



	Jan-Mar 2011	Jan-Mar 2012	Jan-Mar 2013	Jan-Mar 2014	Jan-Mar 2015	Jan-Mar 2016
All categories	452	497	497	500	494	525
Urgent <sup>1</sup>	58	50	59	65	77	82
Semi-urgent <sup>1</sup>	191	198	219	173	211	174
Non-urgent <sup>2</sup>	197	244	212	254	200	268
Staged surgery <sup>3</sup>	6	5	7	8	6	1

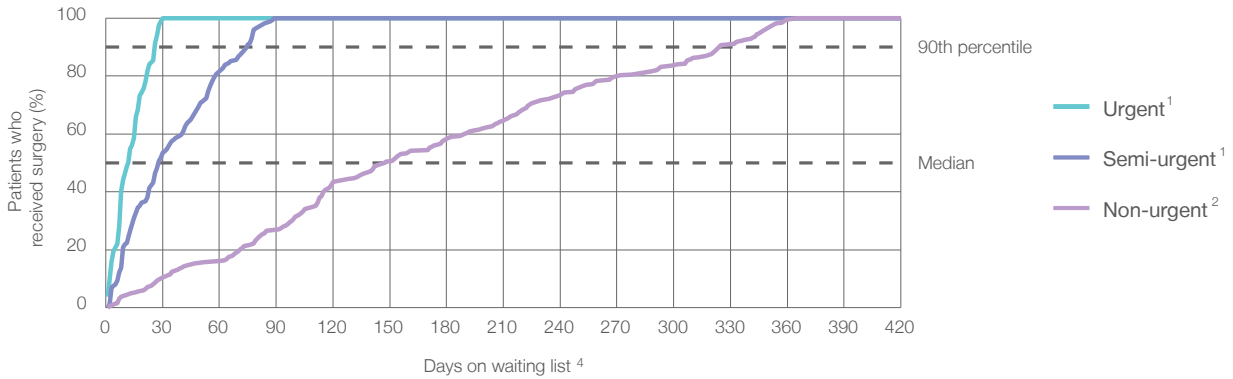
## Mount Druiitt Hospital: Time waited to receive elective surgery

January to March 2016

Percentage of patients who received surgery within the clinically recommended timeframe

	Recommended:	100%	Same period last year	Peer group (this period)
1 Urgent <sup>1</sup>	30 days	100%	100%	100%
2 Semi-urgent <sup>1</sup>	90 days	100%	100%	99%
3 Non-urgent <sup>2</sup>	365 days	100%	100%	99%

Percentage of patients who received elective surgery by waiting time (days)



Waiting time (days) for people who received surgery by urgency category

	Peer group (this period)	This hospital (same period last year)	Peer group (same period last year)
<b>1 Urgent:</b> <sup>1</sup> 82 patients			
Median time to receive surgery	13 days	14	13
90th percentile time to receive surgery	*	27	27
<b>2 Semi-urgent:</b> <sup>1</sup> 174 patients			
Median time to receive surgery	28 days	51	43
90th percentile time to receive surgery	75 days	83	79
<b>3 Non-urgent:</b> <sup>2</sup> 268 patients			
Median time to receive surgery	148 days	272	153
90th percentile time to receive surgery	325 days	348	337

## Mount Druiitt Hospital: Time waited to receive elective surgery

January to March 2016

Median <sup>5</sup> waiting time (days) for patients who received elective surgery by specialty of surgeon		Same period last year	Peer group (this period)
Cardiothoracic surgery	n/a (0 patients)	n/a	n/a
Ear, nose and throat surgery	n/a (0 patients)	n/a	166
General surgery	31 days (342 patients)	39	47
Gynaecology	n/a (0 patients)	n/a	46
Medical	n/a (0 patients)	n/a	4
Neurosurgery	n/a (0 patients)	n/a	n/a
Ophthalmology	* (< 5 patients)	*	309
Orthopaedic surgery	198 days (150 patients)	190	185
Plastic surgery	26 days (29 patients)	40	49
Urology	n/a (0 patients)	n/a	35
Vascular surgery	n/a (0 patients)	n/a	*

Median <sup>5</sup> waiting time (days) for patients who received elective surgery by common procedures <sup>7</sup>		Same period last year	Peer group (this period)
Abdominal hysterectomy	n/a (0 patients)	n/a	109
Cataract extraction	n/a (0 patients)	n/a	310
Cholecystectomy	31 days (39 patients)	44	47
Coronary artery bypass graft	n/a (0 patients)	n/a	n/a
Cystoscopy	n/a (0 patients)	n/a	34
Haemorrhoidectomy	71 days (23 patients)	40	74
Hysteroscopy	n/a (0 patients)	n/a	39
Inguinal herniorrhaphy	57 days (33 patients)	69	76
Myringoplasty / Tympanoplasty	n/a (0 patients)	n/a	*
Myringotomy	n/a (0 patients)	n/a	*
Other - General	30 days (39 patients)	29	27
Prostatectomy	n/a (0 patients)	n/a	77
Septoplasty	n/a (0 patients)	n/a	332
Tonsillectomy	n/a (0 patients)	n/a	201
Total hip replacement	222 days (17 patients)	200	215
Total knee replacement	266 days (45 patients)	177	282
Varicose veins stripping and ligation	* (< 5 patients)	*	154

### Mount Druitt Hospital: Elective surgery waiting list

January to March 2016

Patients ready for surgery on waiting list at start of quarter: 783 patients

Patients ready for surgery on waiting list at end of quarter: 797 patients

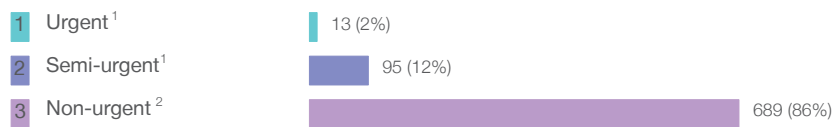
Patients not ready for surgery<sup>8</sup> on waiting list at end of quarter: 80 patients

	Same period last year	Change since one year ago
Patients ready for surgery on waiting list at start of quarter	694	13%
Patients ready for surgery on waiting list at end of quarter	767	4%
Patients not ready for surgery <sup>8</sup> on waiting list at end of quarter	105	-24%

### Mount Druitt Hospital: Patients ready for elective surgery

as at 31st March 2016

Patients ready for surgery on waiting list by urgency category: 797 patients



	Same period last year	Change since one year ago
Urgent <sup>1</sup>	8	63%
Semi-urgent <sup>1</sup>	120	-21%
Non-urgent <sup>2</sup>	639	8%

## Mount Druiitt Hospital: Patients ready for elective surgery

as at 31st March 2016

Patients ready for elective surgery by specialty of surgeon: 797 patients

	As at 31 Mar 2016	Same time last year	Change since one year ago
All specialties	797	767	4%
Cardiothoracic surgery	0	0	n/a
Ear, nose and throat surgery	0	0	n/a
General surgery	365	284	29%
Gynaecology	0	0	n/a
Medical	0	0	n/a
Neurosurgery	0	0	n/a
Ophthalmology	< 5	5	*
Orthopaedic surgery	418	460	-9%
Plastic surgery	11	18	-39%
Urology	0	0	n/a
Vascular surgery	0	0	n/a

Patients ready for elective surgery for common procedures <sup>7</sup>

	As at 31 Mar 2016	Same time last year	Change since one year ago
Abdominal hysterectomy	0	< 5	n/a
Cataract extraction	0	< 5	n/a
Cholecystectomy	46	30	53%
Coronary artery bypass graft	0	< 5	n/a
Cystoscopy	0	< 5	n/a
Haemorrhoidectomy	39	30	30%
Hysteroscopy	0	< 5	n/a
Inguinal herniorrhaphy	47	38	24%
Myringoplasty / Tympanoplasty	0	< 5	n/a
Myringotomy	0	< 5	n/a
Other - General	40	36	11%
Prostatectomy	0	< 5	n/a
Septoplasty	0	< 5	n/a
Tonsillectomy	0	< 5	n/a
Total hip replacement	73	70	4%
Total knee replacement	155	135	15%
Varicose veins stripping and ligation	< 5	< 5	*

## Mount Druiitt Hospital: Patients ready for elective surgery as at 31st March 2016

Patients ready for elective surgery, on the waiting list for longer than 12 months

	As at 31 Mar 2016	Same time last year
All specialties	0	0

- \* Suppressed due to small numbers and to protect privacy. Relevant graphs are also suppressed.
- < 5 Less than five patients. For measures by urgency category, counts are included in an adjacent category. Relevant graphs are also suppressed.
1. Excluding staged procedures.
  2. Excluding staged procedures and cystoscopy.
  3. Including non-urgent cystoscopy.
  4. Excludes the total number of days the patient was coded as 'not ready for surgery'.
  5. This is the number of days it took for half of patients who received elective surgery during the period to be admitted and receive their surgery. The other half took equal to or longer than the median to be admitted for surgery.
  6. This is the number of days it took for 90% of patients who received elective surgery during the period to be admitted and receive their surgery. The final 10% of patients took equal to or longer than the 90th percentile.
  7. The procedures included in this list are procedures which are high volume; some may be associated with long waiting periods. For a description of these procedures see *Elective Surgery Glossary of Common Procedures, December 2012*.
  8. Includes staged procedures, non-urgent cystoscopy, and patients currently not available for personal reasons.
- For more information: For details of methods, see the *Technical Supplement: Elective surgery measures, January to March 2013*.
- Note:** All percentages rounded to whole numbers and therefore percentages may not add to 100%.
- Source:** Waiting List Collection On-Line System, NSW Health (extracted 15 April 2016).