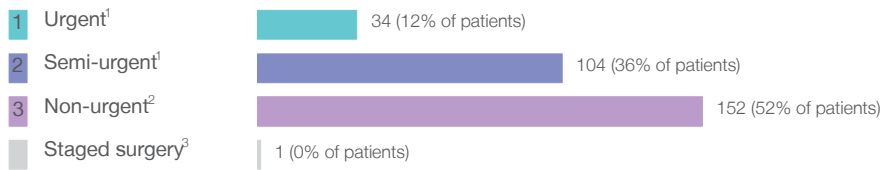


Ryde Hospital: Elective surgery performed

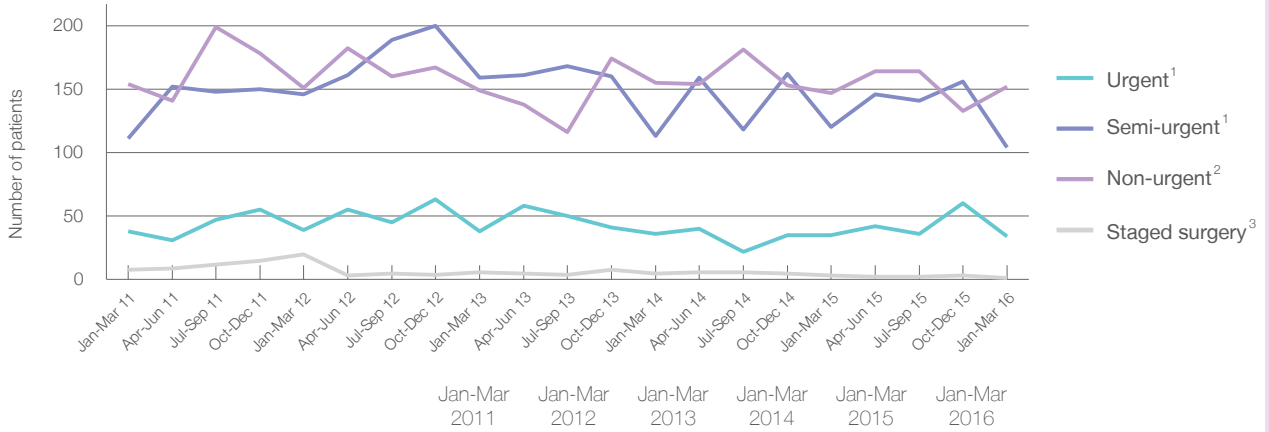
January to March 2016

Patients who received elective surgery by urgency category: 291 patients



Urgency Category	Same period last year	Change since one year ago
1 Urgent ¹	35	-3%
2 Semi-urgent ¹	120	-13%
3 Non-urgent ²	147	3%
Staged surgery ³	3	-67%

Patients who received elective surgery by urgency category by quarter, January 2011 to March 2016



Urgency Category	Jan-Mar 2011	Jan-Mar 2012	Jan-Mar 2013	Jan-Mar 2014	Jan-Mar 2015	Jan-Mar 2016
All categories	311	356	352	309	305	291
Urgent ¹	38	39	38	36	35	34
Semi-urgent ¹	111	146	159	113	120	104
Non-urgent ²	154	151	149	155	147	152
Staged surgery ³	8	20	6	5	3	1

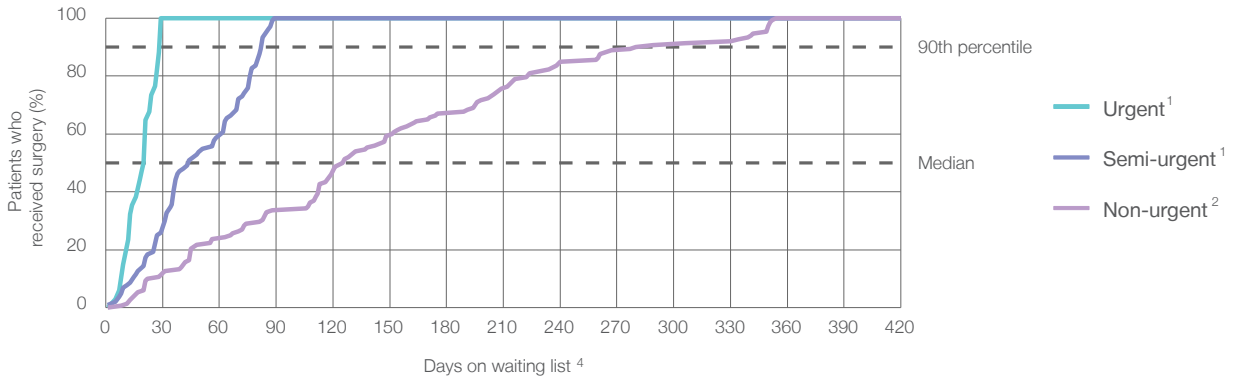
Ryde Hospital: Time waited to receive elective surgery

January to March 2016

Percentage of patients who received surgery within the clinically recommended timeframe

	Recommended:		Same period last year	Peer group (this period)
1 Urgent ¹	30 days	100%	100%	100%
2 Semi-urgent ¹	90 days	100%	100%	99%
3 Non-urgent ²	365 days	100%	100%	99%

Percentage of patients who received elective surgery by waiting time (days)



Waiting time (days) for people who received surgery by urgency category

		Peer group (this period)	This hospital (same period last year)	Peer group (same period last year) ¹
1 Urgent: ¹ 34 patients				
Median time to receive surgery	21 days	14	14	13
90th percentile time to receive surgery	*	27	*	27
2 Semi-urgent: ¹ 104 patients				
Median time to receive surgery	44 days	51	47	51
90th percentile time to receive surgery	83 days	83	80	83
3 Non-urgent: ² 152 patients				
Median time to receive surgery	126 days	272	82	272
90th percentile time to receive surgery	280 days	348	340	351

Ryde Hospital: Time waited to receive elective surgery

January to March 2016

Median ⁵ waiting time (days) for patients who received elective surgery by specialty of surgeon		Same period last year	Peer group (this period)
Cardiothoracic surgery	n/a (0 patients)	n/a	n/a
Ear, nose and throat surgery	338 days (18 patients)	335	166
General surgery	43 days (107 patients)	50	47
Gynaecology	30 days (35 patients)	35	46
Medical	n/a (0 patients)	n/a	4
Neurosurgery	n/a (0 patients)	n/a	n/a
Ophthalmology	45 days (35 patients)	45	309
Orthopaedic surgery	132 days (89 patients)	71	185
Plastic surgery	n/a (0 patients)	n/a	49
Urology	* (7 patients)	*	35
Vascular surgery	n/a (0 patients)	n/a	*

Median ⁵ waiting time (days) for patients who received elective surgery by common procedures ⁷		Same period last year	Peer group (this period)
Abdominal hysterectomy	* (< 5 patients)	*	109
Cataract extraction	45 days (35 patients)	45	310
Cholecystectomy	33 days (24 patients)	36	47
Coronary artery bypass graft	n/a (0 patients)	n/a	n/a
Cystoscopy	* (5 patients)	*	34
Haemorrhoidectomy	* (< 5 patients)	*	74
Hysteroscopy	27 days (25 patients)	30	39
Inguinal herniorrhaphy	69 days (33 patients)	66	76
Myringoplasty / Tympanoplasty	n/a (0 patients)	n/a	*
Myringotomy	n/a (0 patients)	n/a	*
Other - General	n/a (0 patients)	*	27
Prostatectomy	n/a (0 patients)	n/a	77
Septoplasty	* (< 5 patients)	*	332
Tonsillectomy	* (< 5 patients)	*	201
Total hip replacement	132 days (14 patients)	82	215
Total knee replacement	209 days (11 patients)	*	282
Varicose veins stripping and ligation	n/a (0 patients)	n/a	154

Ryde Hospital: Elective surgery waiting list

January to March 2016

Patients ready for surgery on waiting list at start of quarter: 244 patients

Patients ready for surgery on waiting list at end of quarter: 284 patients

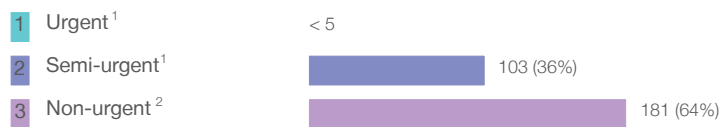
Patients not ready for surgery⁸ on waiting list at end of quarter: 46 patients

	Same period last year	Change since one year ago
Patients ready for surgery on waiting list at start of quarter	198	23%
Patients ready for surgery on waiting list at end of quarter	236	20%
Patients not ready for surgery ⁸ on waiting list at end of quarter	41	12%

Ryde Hospital: Patients ready for elective surgery

as at 31st March 2016

Patients ready for surgery on waiting list by urgency category: 284 patients



	Same period last year	Change since one year ago
Urgent ¹	5	*
Semi-urgent ¹	75	33%
Non-urgent ²	156	16%

Ryde Hospital: Patients ready for elective surgery
as at 31st March 2016

Patients ready for elective surgery by specialty of surgeon: 284 patients

	As at 31 Mar 2016	Same time last year	Change since one year ago
All specialties	284	236	20%
Cardiothoracic surgery	0	0	n/a
Ear, nose and throat surgery	11	9	22%
General surgery	89	81	10%
Gynaecology	35	27	30%
Medical	0	0	n/a
Neurosurgery	0	0	n/a
Ophthalmology	15	12	25%
Orthopaedic surgery	129	103	25%
Plastic surgery	0	0	n/a
Urology	5	< 5	*
Vascular surgery	0	0	n/a

Patients ready for elective surgery for common procedures⁷

	As at 31 Mar 2016	Same time last year	Change since one year ago
Abdominal hysterectomy	0	< 5	*
Cataract extraction	13	12	8%
Cholecystectomy	14	15	-7%
Coronary artery bypass graft	0	< 5	n/a
Cystoscopy	5	< 5	*
Haemorrhoidectomy	< 5	< 5	*
Hysteroscopy	21	12	75%
Inguinal herniorrhaphy	18	17	6%
Myringoplasty / Tympanoplasty	0	< 5	n/a
Myringotomy	0	< 5	n/a
Other - General	0	< 5	*
Prostatectomy	0	< 5	n/a
Septoplasty	< 5	5	*
Tonsillectomy	< 5	< 5	*
Total hip replacement	19	14	36%
Total knee replacement	35	28	25%
Varicose veins stripping and ligation	< 5	< 5	n/a

Ryde Hospital: Patients ready for elective surgery

as at 31st March 2016

Patients ready for elective surgery, on the waiting list for longer than 12 months

As at 31 Mar 2016

Same time last year

	As at 31 Mar 2016	Same time last year
All specialties	< 5	0

* Suppressed due to small numbers and to protect privacy. Relevant graphs are also suppressed.

< 5 Less than five patients. For measures by urgency category, counts are included in an adjacent category. Relevant graphs are also suppressed.

1. Excluding staged procedures.
2. Excluding staged procedures and cystoscopy.
3. Including non-urgent cystoscopy.
4. Excludes the total number of days the patient was coded as 'not ready for surgery'.
5. This is the number of days it took for half of patients who received elective surgery during the period to be admitted and receive their surgery. The other half took equal to or longer than the median to be admitted for surgery.
6. This is the number of days it took for 90% of patients who received elective surgery during the period to be admitted and receive their surgery. The final 10% of patients took equal to or longer than the 90th percentile.
7. The procedures included in this list are procedures which are high volume; some may be associated with long waiting periods. For a description of these procedures see *Elective Surgery Glossary of Common Procedures, December 2012*.
8. Includes staged procedures, non-urgent cystoscopy, and patients currently not available for personal reasons.

For more information: For details of methods, see the *Technical Supplement: Elective surgery measures, January to March 2013*.

Note: All percentages rounded to whole numbers and therefore percentages may not add to 100%.

Source: Waiting List Collection On-Line System, NSW Health (extracted 15 April 2016).