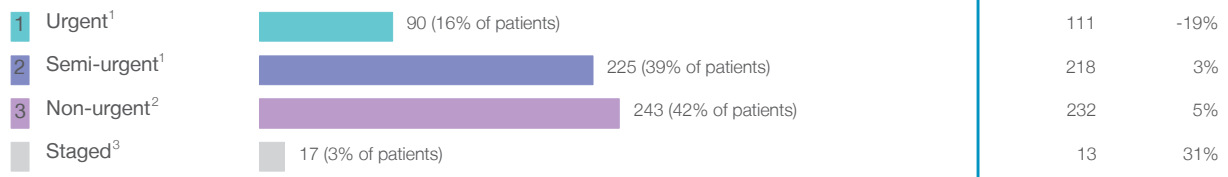


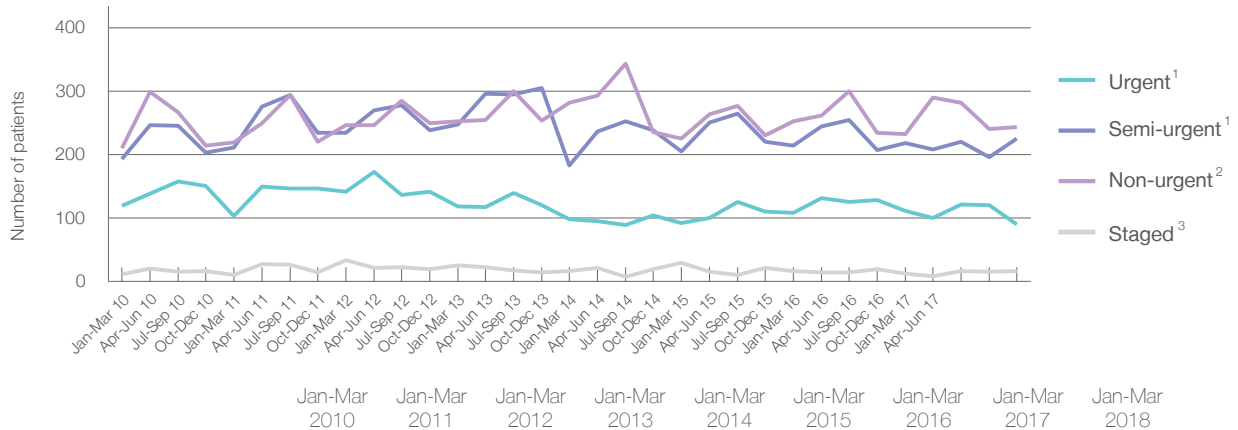
Maitland Hospital: Elective surgery performed

January to March 2018

Patients who received elective surgery by urgency category: 575 patients



Patients who received elective surgery by urgency category by quarter, January 2013 to March 2018



All categories	Jan-Mar 2010	Jan-Mar 2011	Jan-Mar 2012	Jan-Mar 2013	Jan-Mar 2014	Jan-Mar 2015	Jan-Mar 2016	Jan-Mar 2017	Jan-Mar 2018
Urgent ¹	119	103	142	118	98	92	108	111	90
Semi-urgent ¹	193	211	234	247	183	205	214	218	225
Non-urgent ²	210	219	246	253	282	225	252	232	243
Staged ³	12	11	34	26	17	30	17	13	17

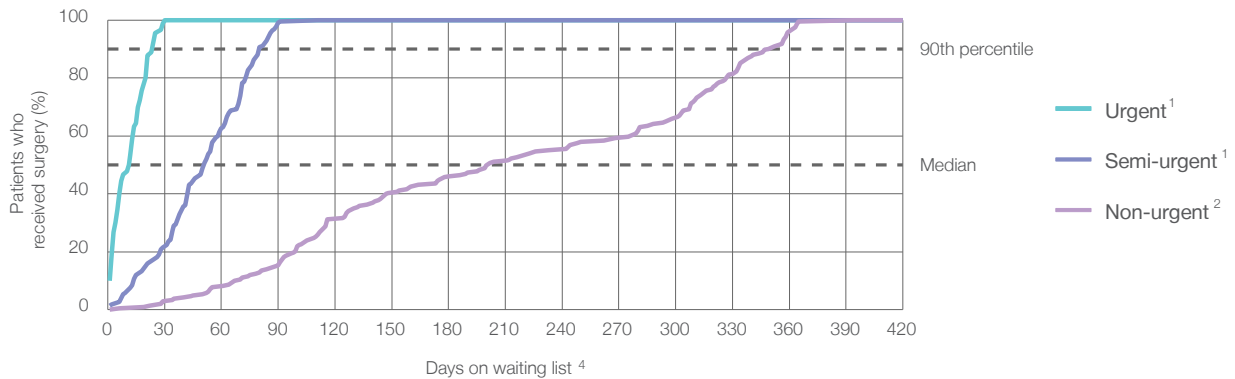
Maitland Hospital: Time waited to receive elective surgery

January to March 2018

Percentage of patients who received surgery within the clinically recommended timeframe

			Same period last year	Peer group (this period)
1 Urgent ¹	Recommended: 30 days	100%	100%	99.2%
2 Semi-urgent ¹	Recommended: 90 days	99.1%	99.5%	97.5%
3 Non-urgent ²	Recommended: 365 days	99.6%	99.6%	97.4%

Percentage of patients who received elective surgery by waiting time (days)



Waiting time (days) for people who received surgery by urgency category

		Peer group (this period)	This hospital (same period last year)	Peer group (same period last year)
1 Urgent: ¹ 90 patients				
Median time to receive surgery	12 days	13	12	13
90th percentile time to receive surgery	*	27	25	27
2 Semi-urgent: ¹ 225 patients				
Median time to receive surgery	51 days	50	48	50
90th percentile time to receive surgery	80 days	85	81	84
3 Non-urgent: ² 243 patients				
Median time to receive surgery	201 days	274	195	266
90th percentile time to receive surgery	349 days	356	349	358

Maitland Hospital: Time waited to receive elective surgery

January to March 2018

Median⁵ waiting time (days) for patients who received elective surgery by specialty of surgeon

		Same period last year	Peer group (this period)
Cardiothoracic surgery	n/a (0 patients)	n/a	*
Ear, nose and throat surgery	127 days (44 patients)	80	270
General surgery	56 days (178 patients)	36	58
Gynaecology	50 days (85 patients)	45	51
Medical	n/a (0 patients)	n/a	16
Neurosurgery	n/a (0 patients)	n/a	n/a
Ophthalmology	n/a (0 patients)	n/a	280
Orthopaedic surgery	164 days (185 patients)	172	199
Plastic surgery	n/a (0 patients)	n/a	76
Urology	38 days (83 patients)	43	42
Vascular surgery	n/a (0 patients)	n/a	23

Median⁵ waiting time (days) for patients who received elective surgery by common procedures ⁷

		Same period last year	Peer group (this period)
Abdominal hysterectomy	* (8 patients)	66	82
Cataract extraction	n/a (0 patients)	n/a	287
Cholecystectomy	71 days (31 patients)	84	67
Coronary artery bypass graft	n/a (0 patients)	n/a	n/a
Cystoscopy	18 days (34 patients)	36	30
Haemorrhoidectomy	* (< 5 patients)	*	77
Hysteroscopy	43 days (30 patients)	23	41
Inguinal herniorrhaphy	84 days (15 patients)	84	116
Myringoplasty / Tympanoplasty	n/a (0 patients)	n/a	337
Myringotomy	* (< 5 patients)	*	86
Other - General	* (7 patients)	22	29
Prostatectomy	* (9 patients)	*	76
Septoplasty	* (< 5 patients)	n/a	321
Tonsillectomy	174 days (21 patients)	204	297
Total hip replacement	147 days (21 patients)	316	242
Total knee replacement	329 days (28 patients)	340	301
Varicose veins stripping and ligation	n/a (0 patients)	n/a	99

Maitland Hospital: Elective surgery waiting list

January to March 2018

Patients ready for surgery on waiting list at start of quarter: 831 patients

Patients ready for surgery on waiting list at end of quarter: 898 patients

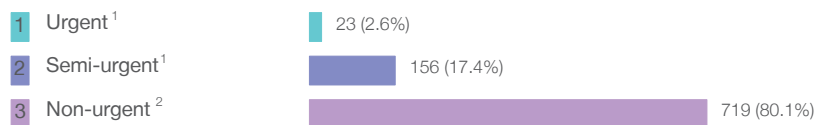
Patients not ready for surgery⁸ on waiting list at end of quarter: 94 patients

Same period last year	Change since one year ago
831	0%
805	12%
141	-33%

Maitland Hospital: Patients ready for elective surgery

as at 31st March 2018

Patients ready for surgery on waiting list by urgency category: 898 patients



Same period last year	Change since one year ago
17	35%
139	12%
649	11%

Maitland Hospital: Patients ready for elective surgery as at 31st March 2018

Patients ready for elective surgery by specialty of surgeon: 898 patients

	As at 31 Mar 2018	Same time last year	Change since one year ago
All specialties	898	805	12%
Cardiothoracic surgery	0	0	n/a
Ear, nose and throat surgery	102	61	67%
General surgery	183	144	27%
Gynaecology	127	83	53%
Medical	0	0	n/a
Neurosurgery	0	0	n/a
Ophthalmology	0	0	n/a
Orthopaedic surgery	443	450	-2%
Plastic surgery	0	0	n/a
Urology	43	67	-36%
Vascular surgery	0	0	n/a

Patients ready for elective surgery for common procedures ⁷

	As at 31 Mar 2018	Same time last year	Change since one year ago
Abdominal hysterectomy	13	17	-24%
Cataract extraction	0	< 5	n/a
Cholecystectomy	38	20	90%
Coronary artery bypass graft	0	< 5	n/a
Cystoscopy	12	16	-25%
Haemorrhoidectomy	< 5	< 5	*
Hysteroscopy	35	12	192%
Inguinal herniorrhaphy	18	19	-5%
Myringoplasty / Tympanoplasty	< 5	< 5	*
Myringotomy	9	6	50%
Other - General	15	9	67%
Prostatectomy	7	15	-53%
Septoplasty	< 5	< 5	n/a
Tonsillectomy	65	37	76%
Total hip replacement	46	58	-21%
Total knee replacement	131	125	5%
Varicose veins stripping and ligation	< 5	< 5	*

Maitland Hospital: Patients ready for elective surgery as at 31st March 2018

Patients ready for elective surgery, on the waiting list for longer than 12 months

As at 31 Mar 2018

Same time last year

All specialties	< 5	0
-----------------	-----	---

* Suppressed due to small numbers and to protect privacy. Relevant graphs are also suppressed.

< 5 Less than five patients. For measures by urgency category, counts are included in an adjacent category. Relevant graphs are also suppressed.

1. Excluding staged procedures.
2. Excluding staged procedures and cystoscopy.
3. Including non-urgent cystoscopy.
4. Excludes the total number of days the patient was coded as 'not ready for surgery'.
5. This is the number of days it took for half of patients who received elective surgery during the period to be admitted and receive their surgery. The other half took equal to or longer than the median to be admitted for surgery.
6. This is the number of days it took for 90% of patients who received elective surgery during the period to be admitted and receive their surgery. The final 10% of patients took equal to or longer than the 90th percentile.
7. The procedures included in this list are procedures which are high volume; some may be associated with long waiting periods. For a description of these procedures see *Elective Surgery Glossary of Common Procedures, December 2012*.
8. Includes staged procedures, non-urgent cystoscopy, and patients currently not available for personal reasons.

For more information: For details of methods, see the *Technical Supplement: Elective surgery measures, January to March 2018*.

Note: All percentages rounded to whole numbers and therefore percentages may not add to 100%.

Source: Waiting List Collection On-Line System, NSW Health (extracted 13 April 2018.).